

List of pages in this Trip Kit

Trip Kit Index

Airport Information For UKOH

Terminal Charts For UKOH

Revision Letter For Cycle 10-2020

Change Notices

Notebook

General Information

Location: KHERSON UKR
ICAO/IATA: UKOH / KHE
Lat/Long: N46° 40.57', E032° 30.37'
Elevation: 148 ft

Airport Use: Public
Daylight Savings: Observed
UTC Conversion: -2:00 = UTC
Magnetic Variation: 7.0° E

Fuel Types: Jet A-1
Repair Types: Minor Airframe, Minor Engine
Customs: Yes
Airport Type: IFR
Landing Fee: Yes
Control Tower: Yes
Jet Start Unit: No
LLWS Alert: No
Beacon: No

Sunrise: 0159 Z
Sunset: 1737 Z

Runway Information

Runway: 03
Length x Width: 8202 ft x 138 ft
Surface Type: asphalt
TDZ-Elev: 137 ft
Lighting: Edge, ALS

Runway: 21
Length x Width: 8202 ft x 138 ft
Surface Type: asphalt
TDZ-Elev: 139 ft
Lighting: Edge, ALS

Communication Information

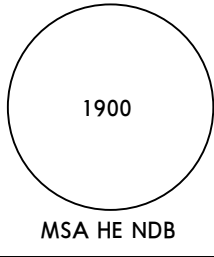
Kherson Tower: 121.200
Kherson Start Tower: 124.000
Odesa Information: 134.500 Flight Info Service RCO

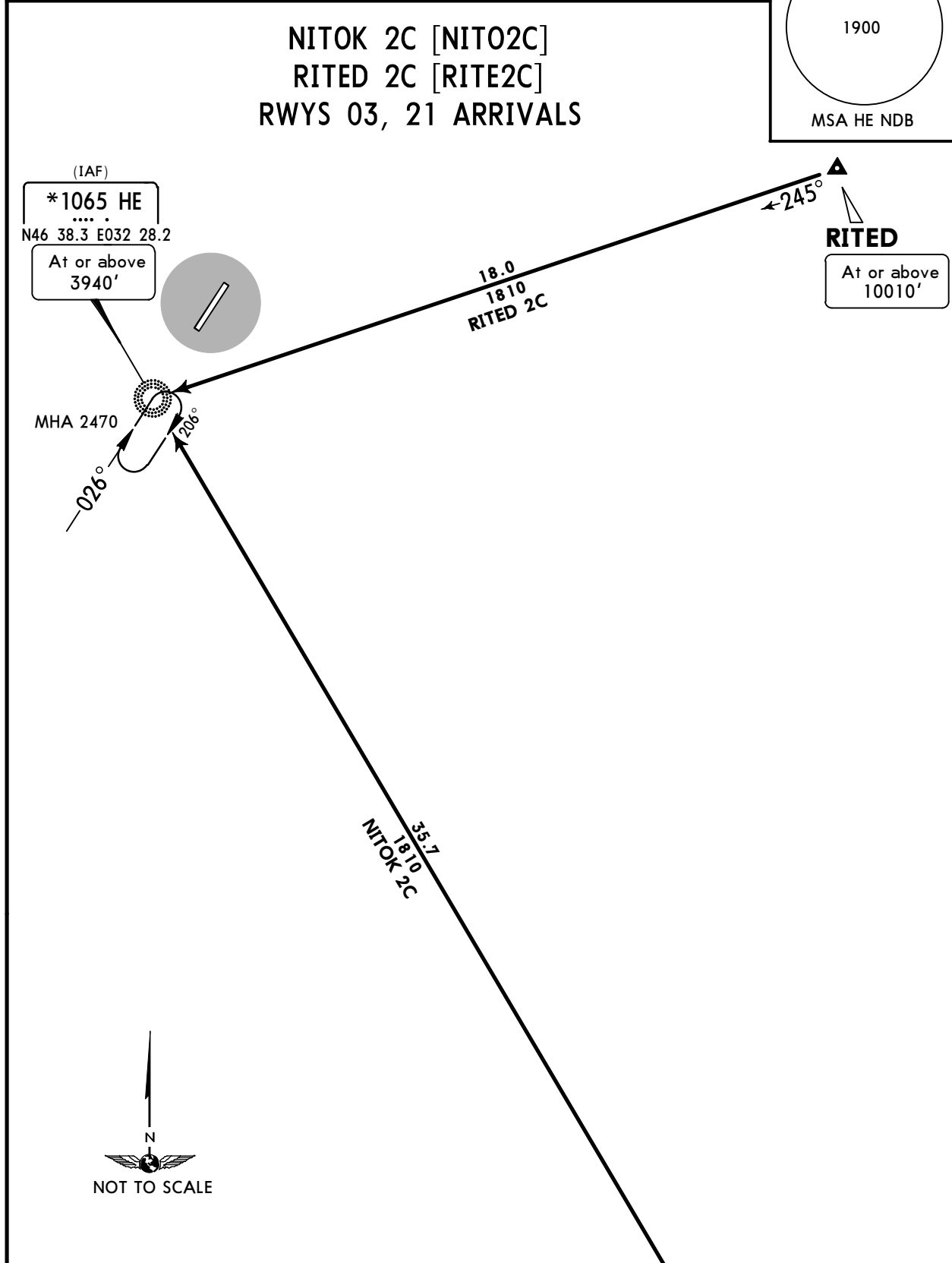
UKOH/KHE
KHERSON INTL

JEPPESEN
10 AUG 18 **10-2** **Eff 16 Aug**

KHERSON, UKRAINE

STAR

Apt Elev 141'	Alt Set: hPa Trans level: By ATC Trans alt: 10010'	
NITOK 2C [NITO2C] RITED 2C [RITE2C] RWYS 03, 21 ARRIVALS		



FT/METER CONVERSION	
QNH	
10010'	- 3050m
8040'	- 2450m
3940'	- 1200m
2470'	- 750m

STAR	ROUTING
NITOK 2C	On 323° bearing to HE NDB, then according to approach chart.
RITED 2C	On 245° bearing to HE NDB, then according to approach chart.

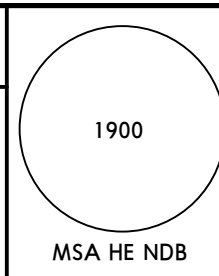
UKOH/KHE
KHERSON INTL

JEPPESEN
 10 AUG 18 **10-2A** **Eff 16 Aug**

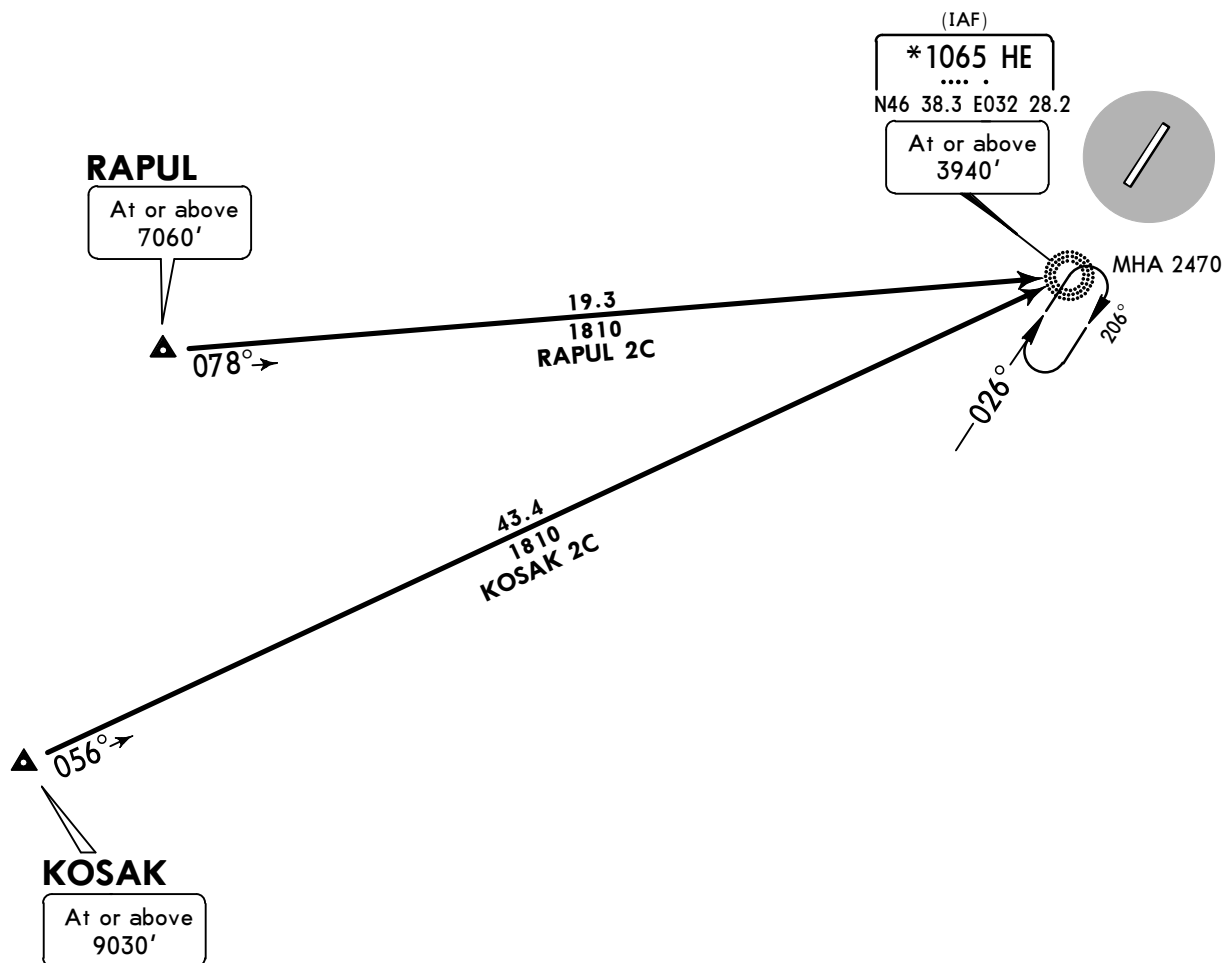
KHERSON, UKRAINE

STAR

Apt Elev
141'
 Alt Set: hPa
 Trans level: By ATC Trans alt: 10010'



KOSAK 2C [KOSA2C]
RAPUL 2C [RAPU2C]
RWYS 03, 21 ARRIVALS



FT/METER CONVERSION	
QNH	
10010'	- 3050m
9030'	- 2750m
7060'	- 2150m
3940'	- 1200m
2470'	- 750m



STAR	ROUTING
KOSAK 2C	On 056° bearing to HE NDB, then according to approach chart.
RAPUL 2C	On 078° bearing to HE NDB, then according to approach chart.

UKOH/KHE
KHERSON INTL

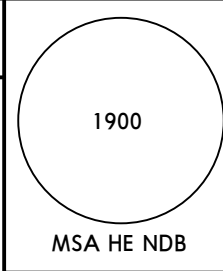
JEPPESEN
 12 JUL 19 **10-3** **Eff 18 Jul**

KHERSON, UKRAINE

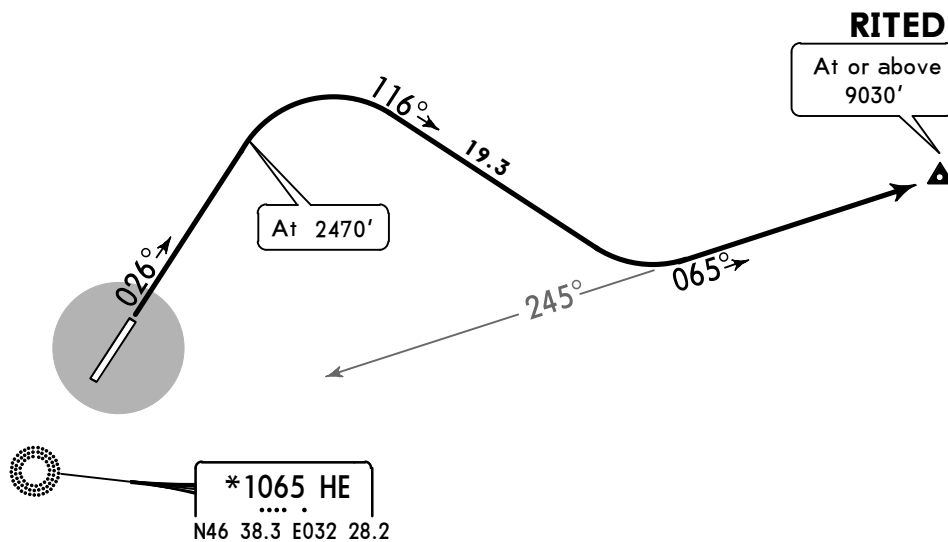
SID

Apt Elev
148'

Trans level: By ATC Trans alt: 10010'
 In unable to comply SID advise ATC.



RITED 2A [RITE2A]
DEPARTURE
(RWY 03)



***1065 HE**

 N46 38.3 E032 28.2

FT/METER CONVERSION	
QNH	
2470'	- 750m
9030'	- 2750m
10010'	- 3050m



This SID requires a minimum climb gradient of 7.5% up to 9030.

Gnd speed-KT	75	100	150	200	250	300
7.5% V/V (fpm)	570	760	1139	1519	1899	2279

ROUTING

Climb on 026° track to 2470', turn RIGHT, 116° track, turn LEFT, intercept 065° bearing from HE NDB to RITED.

UKOH/KHE
KHERSON INTL

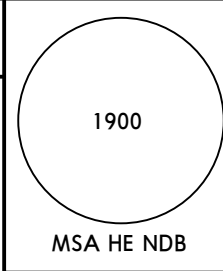
JEPPESEN
 12 JUL 19 **(10-3A)** **Eff 18 Jul**

KHERSON, UKRAINE

SID

Apt Elev
148'

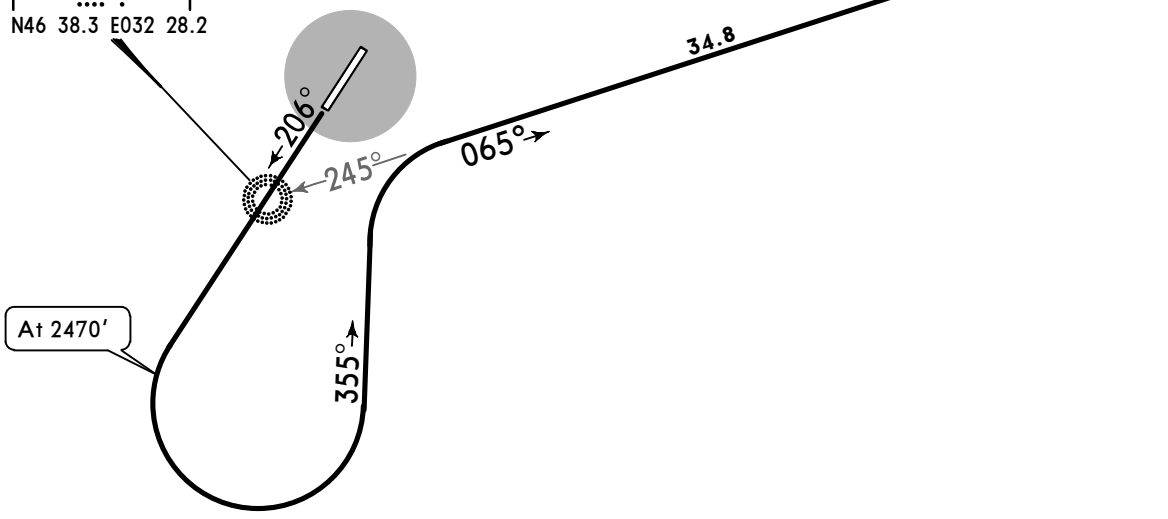
Trans level: By ATC Trans alt: 10010'
 If unable to comply SID advise ATC.



RITED 3B [RITE3B]
DEPARTURE
(RWY 21)

RITED
 At or above
 9030'

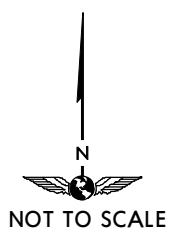
***1065 HE**
 N46 38.3 E032 28.2



At 2470'

FT/METER CONVERSION

	QNH
2470'	750m
9030'	2750m
10010'	3050m



This SID requires a minimum climb gradient of 4.2% up to 9030'.

Gnd speed-KT	75	100	150	200	250	300
4.2% V/V (fpm)	319	425	638	851	1063	1276

ROUTING

Climb on 206° track to 2470', turn LEFT, 355° track, turn RIGHT, intercept 065° bearing from HE NDB to RITED.

UKOH/KHE
KHERSON INTL

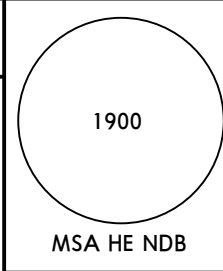
JEPPESEN
 12 JUL 19 **10-3B** **Eff 18 Jul**

KHERSON, UKRAINE

SID

Apt Elev
148'

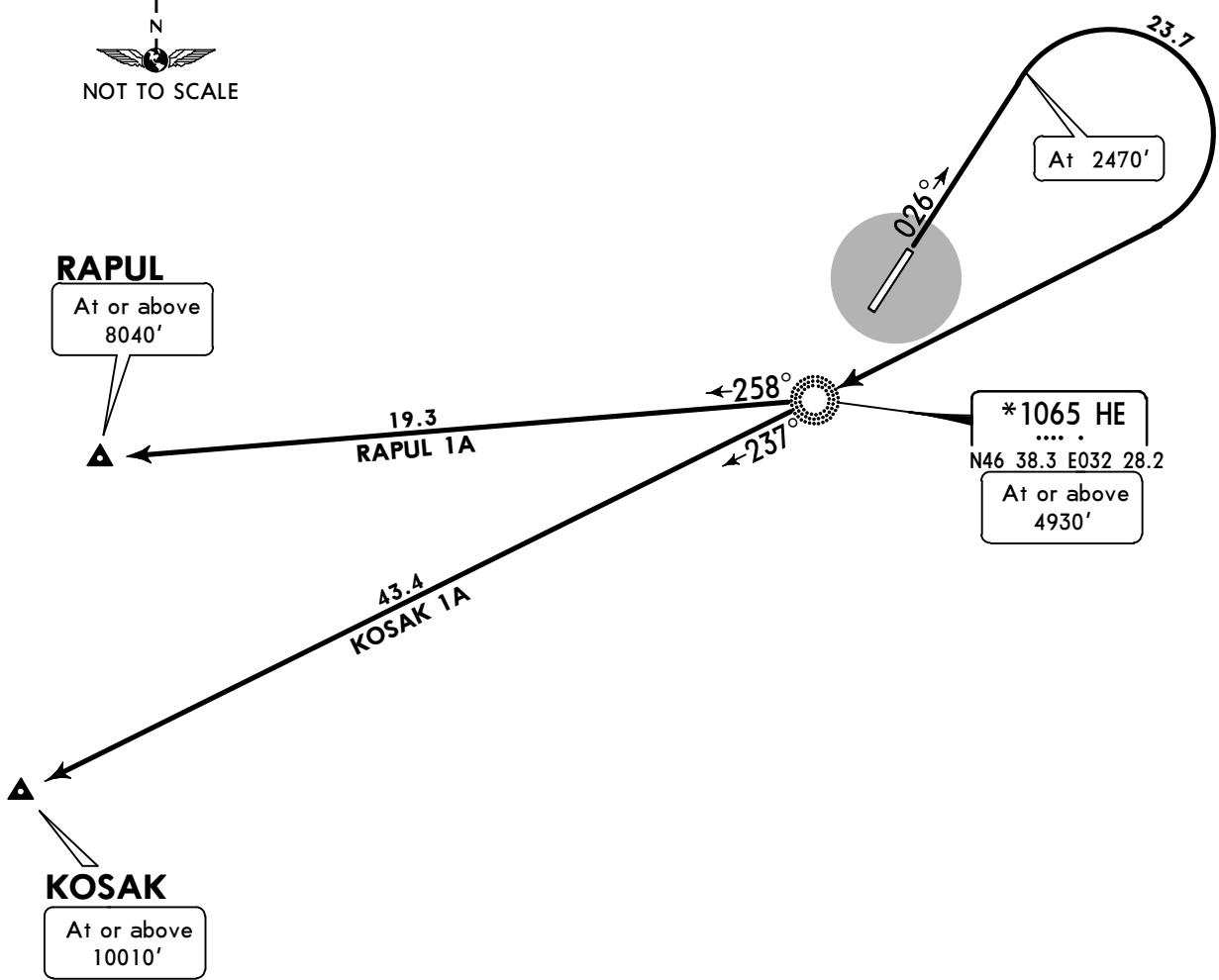
Trans level: By ATC Trans alt: 10010'
 If unable to comply SID advise ATC.



KOSAK 1A [KOSA1A]
RAPUL 1A [RAPU1A]
DEPARTURES
(RWY 03)



RAPUL
 At or above
 8040'



KOSAK
 At or above
 10010'

FT/METER CONVERSION	
QNH	
2470'	- 750m
4930'	- 1500m
8040'	- 2450m
10010'	- 3050m

SID	ROUTING
KOSAK 1A	Climb on 026° track to 2470', turn RIGHT to HE NDB, turn LEFT, 237° bearing to KOSAK.
RAPUL 1A	Climb on 026° track to 2470', turn RIGHT to HE NDB, turn RIGHT, 258° bearing to RAPUL.

CHANGES: Airport elevation.

UKOH/KHE
KHERSON INTL

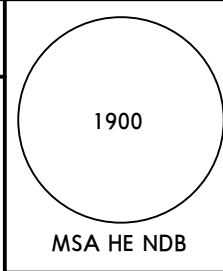
JEPPESEN
 12 JUL 19 **(10-3C)** **Eff 18 Jul**

KHERSON, UKRAINE

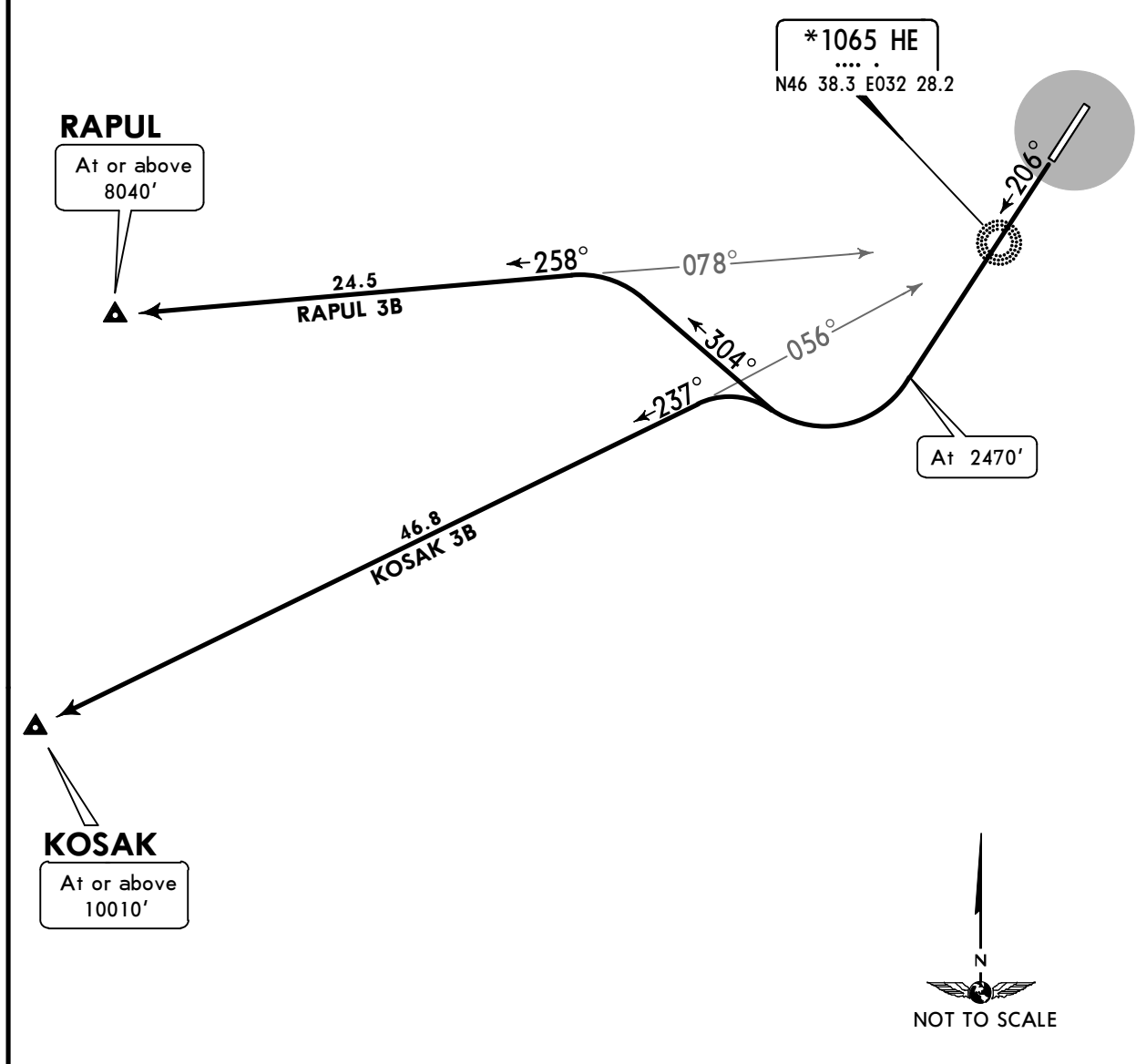
SID

Apt Elev
148'

Trans level: By ATC Trans alt: 10010'
 If unable to comply SID advise ATC.



KOSAK 3B [KOSA3B]
RAPUL 3B [RAPU3B]
DEPARTURES
(RWY 21)



These SIDs require a minimum climb gradient of 7.0% up to 4930'.

Gnd speed-KT	75	100	150	200	250	300
7.0% V/V (fpm)	532	709	1063	1418	1772	2127

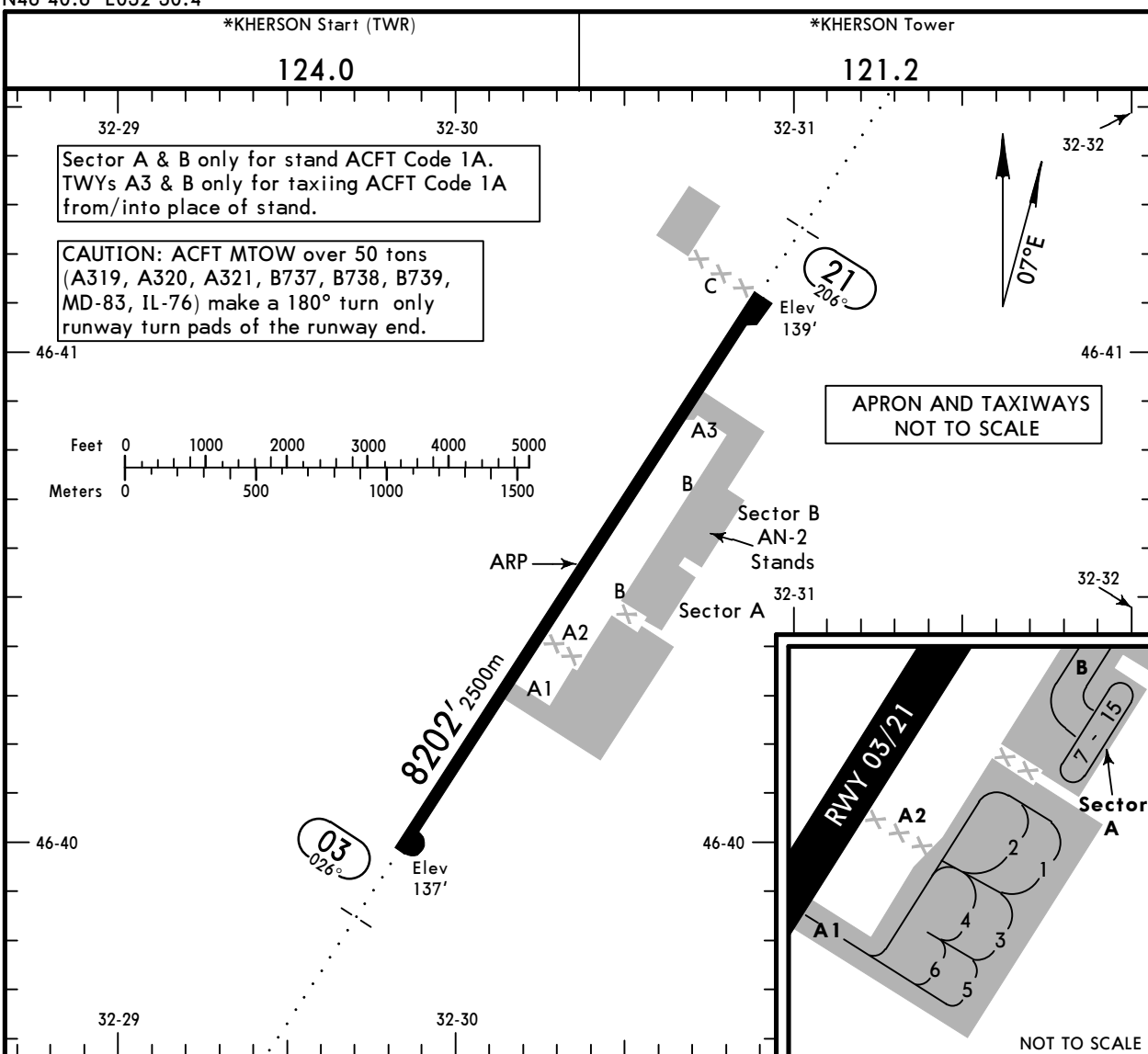
FT/METER CONVERSION	
QNH	
2470'	- 750m
4930'	- 1500m
8040'	- 2450m
10010'	- 3050m

SID	ROUTING
KOSAK 3B	Climb on 206° track to 2470', turn RIGHT, intercept 237° bearing from HE NDB to KOSAK.
RAPUL 3B	Climb on 206° track to 2470', turn RIGHT, 304° track, turn LEFT, intercept 258° bearing from HE NDB to RAPUL.

UKOH/KHE
 Apt Elev **148'**
 N46 40.6 E032 30.4

JEPPesen
 20 DEC 19 **(10-9)**

KHERSON, UKRAINE
KHERSON INTL



ADDITIONAL RUNWAY INFORMATION

RWY	LANDING BEYOND	USABLE LENGTHS			
		Threshold	Glide Slope	TAKE-OFF	WIDTH
03 21	RL (60m) ALS PAPI-L (3.00°)		7169' 2185m	1	138' 42m

1 TAKE-OFF RUN AVAILABLE

RWY 03:

From rwy head 8202' (2500m)
 twy A1 int 5577' (1700m)
2 twy A3 int 1640' (500m)

RWY 21:

From rwy head 8202' (2500m)
2 twy A3 int 6562' (2000m)
 twy A1 int 2625' (800m)

2 Only for ACFT Code 1A.

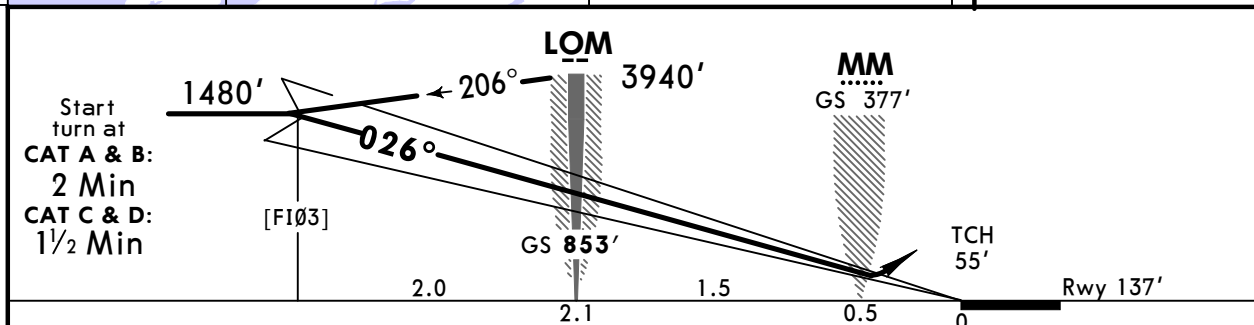
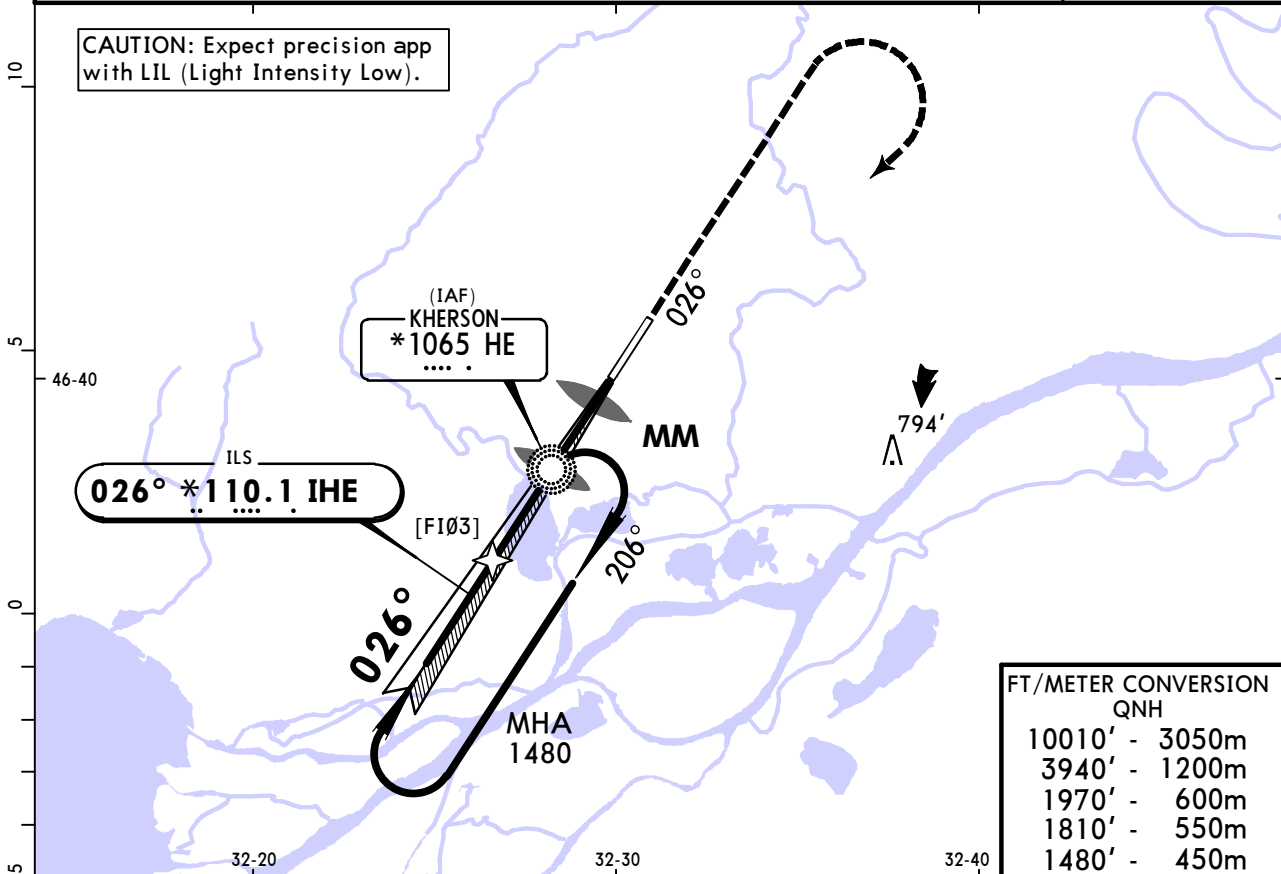
Standard TAKE-OFF		
Low Visibility Take-off		
Day: RL & RCLM Night: RL	Day: RL or RCLM Night: RL	Adequate vis ref (Day only)
A		
B		
C	RVR 300m	400m
D		500m

UKOH/KHE
KHERSON INTL



KHERSON, UKRAINE
ILS Rwy 03

*KHERSON Tower 121.2				*KHERSON Start (TWR) 124.0	
LOC IHE *110.1	Final Apch Crs 026°	LOM 853' (716')	ILS DA(H) Refer to Minimums	Apt Elev 148'	1900 MSA HE NDB
MISSED APCH: Climb on 026° to 1810', then turn RIGHT to HE NDB climbing to 1970', then according to chart.					
Alt Set: hPa Rwy Elev: 5 hPa Trans level: By ATC Trans alt: 10010'				Rwy 137'	
Racetrack restricted to MAX 200 KT.					



Gnd speed-Kts	70	90	100	120	140	160	ALS PAPI	1810' on 026°
GS	3.00°	372	478	531	637	743		

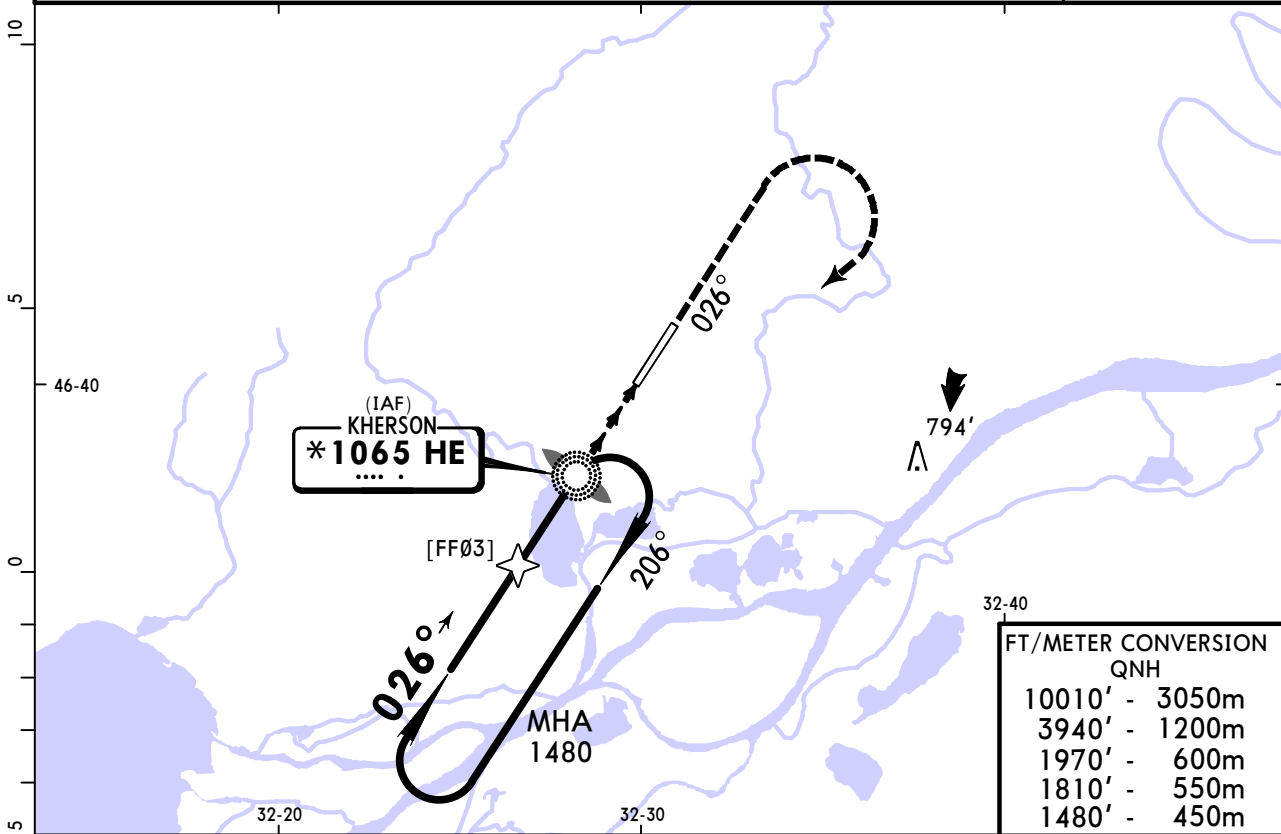
Standard				STRAIGHT-IN LANDING RWY 03		CIRCLE-TO-LAND 1	
ILS				LOC (GS out)			
DA(H) A: 380' (243')		C: 399' (262')					
B: 390' (253')		D: 409' (272')					
FULL		ALS out					
A	RVR 1000m					Max Kts	MDA(H) VIS
B						100	610' (473') 1500m
C	RVR 1100m	RVR 1300m		NOT AUTHORIZED		135	640' (503') 1600m
D						180	890' (753') 2400m
						205	1170' (1033') 3600m

UKOH/KHE
KHERSON INTL

JEPPESEN
17 MAY 19 (16-1) Eff 23 May

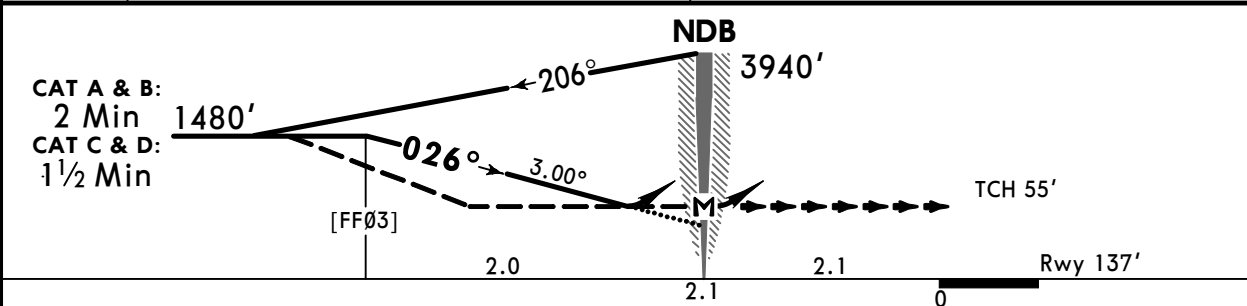
KHERSON, UKRAINE
NDB Rwy 03

*KHERSON Tower			*KHERSON Start (TWR)		
121.2			124.0		
NDB HE *1065	Final Apch Crs 026°	No FAF	DA/MDA(H) 560' (423')	Apt Elev 146'	1900 MSA HE NDB
MISSED APCH: Climb on 026° to 1810', then turn RIGHT to NDB climbing to 1970', then according to chart.					
Alt Set: hPa		Rwy Elev: 5 hPa	Trans level: By ATC	Trans alt: 10010'	
Racetrack restricted to MAX 200 KT.					



FT/METER CONVERSION	
QNH	
10010'	3050m
3940'	1200m
1970'	600m
1810'	550m
1480'	450m

DIST to NDB	2.0	1.0
ALTITUDE	1480'	1170'



Gnd speed-Kts	70	90	100	120	140	160	ALS PAPI	1810' ↑ on 026°
Descent Angle	3.00°	372	478	531	637	743		
MAP at NDB	Standard							

STRAIGHT-IN LANDING RWY 03				CIRCLE-TO-LAND 1	
CDFA		non-CDFA		Max Kts	MDA(H) VIS
DA/MDA(H) 560' (423')		MDA(H) 560' (423')			
ALS out		ALS out		100	610' (473') 1500m
A	RVR 1800m	RVR 2000m	RVR 2000m	RVR 2200m	135 640' (503') 1600m
B			RVR 2200m	RVR 2400m	180 890' (753') 2400m
C					205 1170' (1033') 3600m
D					

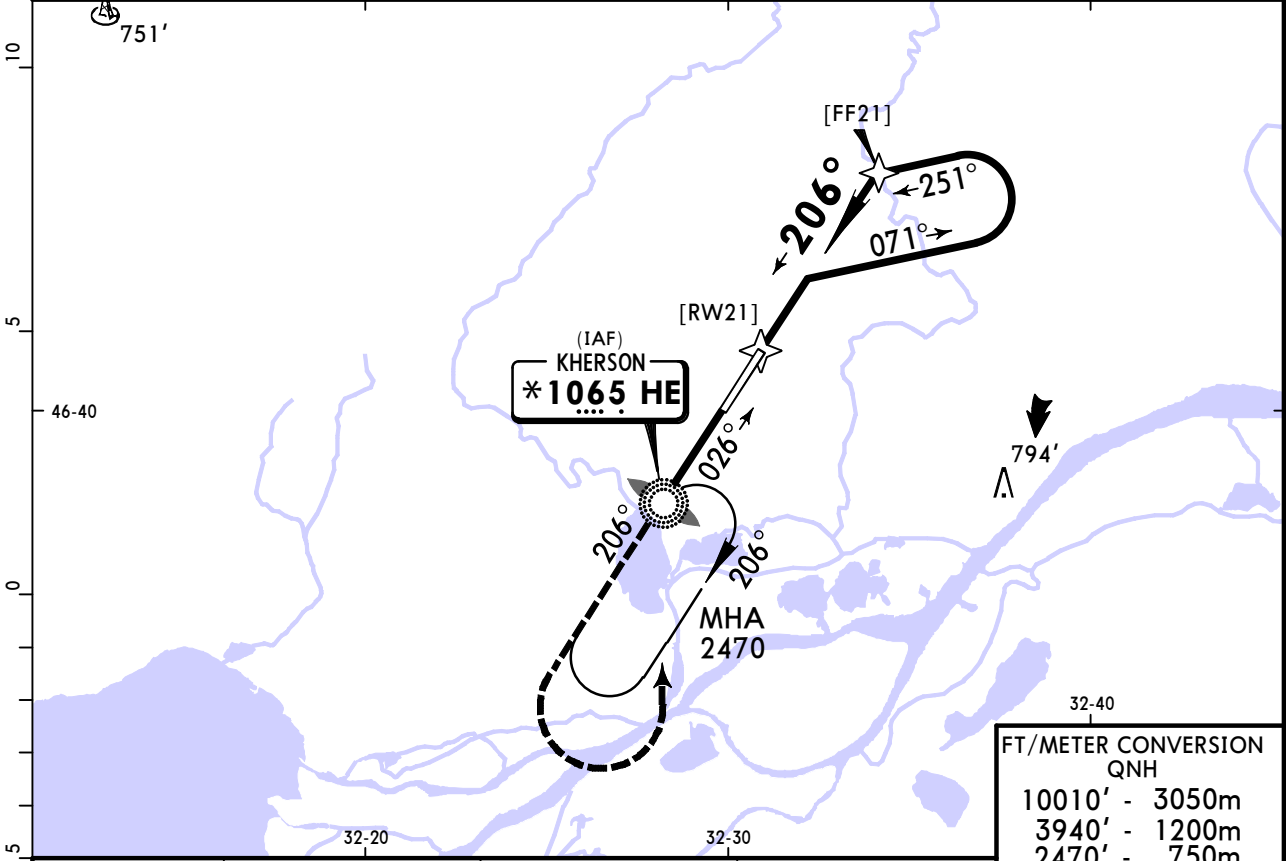
1 Circling height based on rwy 03 thresh elev of 137'. 2 or higher straight-in minimums.

UKOH/KHE KHERSON INTL

JEPPESSEN
17 MAY 19 **16-2** **Eff 23 May**

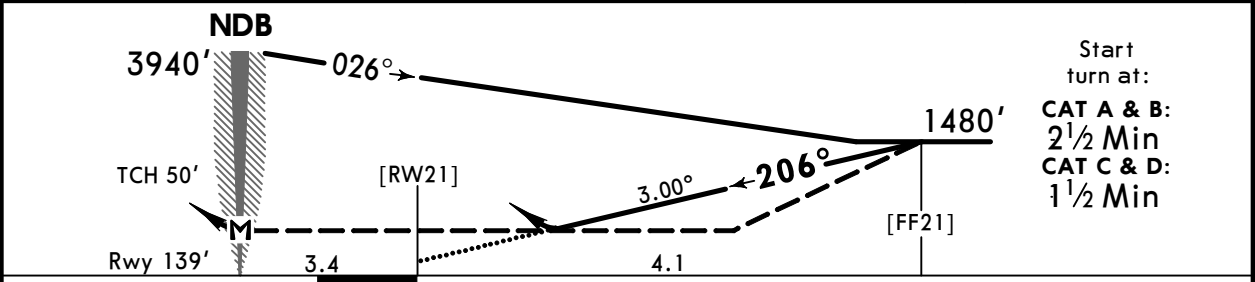
KHERSON, UKRAINE NDB Rwy 21

*KHERSON Tower 121.2				*KHERSON Start (TWR) 124.0		
NDB HE *1065	Final Apch Crs 206°	No FAF	DA/MDA(H) 640' (501')	Apt Elev 146'	1900 MSA HE NDB	
MISSED APCH: Climb on 206° to 1480', then turn LEFT to HE NDB climbing to 1970', then according to chart.						
Alt Set: hPa Rwy Elev: 5 hPa Trans level: By ATC Trans alt: 10010'				Procedure turn restricted to MAX 200 KT.		



FT/METER CONVERSION QNH	
10010'	3050m
3940'	1200m
2470'	750m
1970'	600m
1480'	450m

DIST to RW21	2.0	3.0	4.0
ALTITUDE	820'	1140'	1450'



Start turn at:
CAT A & B: 2½ Min
CAT C & D: 1½ Min

Gnd speed-Kts	70	90	100	120	140	160	ALS PAPI	1480' on 206°
Descent Angle 3.00°	372	478	531	637	743	849		
MAP at NDB								

	STRAIGHT-IN LANDING RWY 21				CIRCLE-TO-LAND	
	CDFA		non-CDFA		Max Kts	VIS
	DA/MDA(H) 640' (501')		MDA(H) 640' (501')			
	ALS out		ALS out			
A	RVR 1500m		RVR 2300m	RVR 2600m	100	640' (501') 2 1500m
B	RVR 1500m		RVR 2300m	RVR 2600m	135	640' (501') 2 1600m
C	RVR 2100m	RVR 2400m	RVR 2500m	RVR 2800m	180	890' (751') 2 2400m
D	RVR 2100m	RVR 2400m	RVR 2500m	RVR 2800m	205	1170' (1031') 3600m

CHANGES: Apt elev. Communication. © JEPPESSEN, 2018, 2019. ALL RIGHTS RESERVED.

Chart changes since cycle 09-2020

ADD = added chart, REV = revised chart, DEL = deleted chart.

ACT	PROCEDURE IDENT	INDEX	REV DATE	EFF DATE
KHERSON, (KHERSON INTL - UKOH)				

TERMINAL CHART CHANGE NOTICES

No Chart Change Notices for Airport UKOH