

List of pages in this Trip Kit

Trip Kit Index

Airport Information For UKLU

Terminal Charts For UKLU

Revision Letter For Cycle 10-2020

Change Notices

Notebook

General Information

Location: UZHHOROD UKR
ICAO/IATA: UKLU / UDJ
Lat/Long: N48° 38.07', E022° 15.78'
Elevation: 384 ft

Airport Use: Public
Daylight Savings: Observed
UTC Conversion: -2:00 = UTC
Magnetic Variation: 6.0° E

Fuel Types: Jet A-1
Customs: Yes
Airport Type: VFR
Landing Fee: Yes
Control Tower: Yes
Jet Start Unit: No
LLWS Alert: No
Beacon: No

Sunrise: 0232 Z
Sunset: 1826 Z

Runway Information

Runway: 10
Length x Width: 6686 ft x 131 ft
Surface Type: asphalt
TDZ-Elev: 374 ft
Lighting: Edge

Runway: 28
Length x Width: 6686 ft x 131 ft
Surface Type: asphalt
TDZ-Elev: 377 ft
Lighting: Edge
Displaced Threshold: 2093 ft

Communication Information

Uzhhorod Tower: 126.900
Lviv Information: 130.700 Flight Info Service RCO

UKLU/UDJ
UZHHOROD INTL

JEPPESEN
24 JAN 20 10-2 Eff 30 Jan

UZHHOROD, UKRAINE
STAR

*UZHHOROD Tower 126.9	Apt Elev 384'	Alt Set: hPa (MM on request) Trans level: By ATC Trans alt: 10010' 1. ACFT flying IFR and intending to land at aerodrome Uzhhorod should file a flight plan with information concerning Ukrainian cross-border over LASOT and change from IFR to VFR before/over SR and established VFR route in field 15. 2. Not later than 2 minutes before crossing Ukrainian-Slovak border over LASOT report ACFT position to ATC.
--------------------------	------------------	---

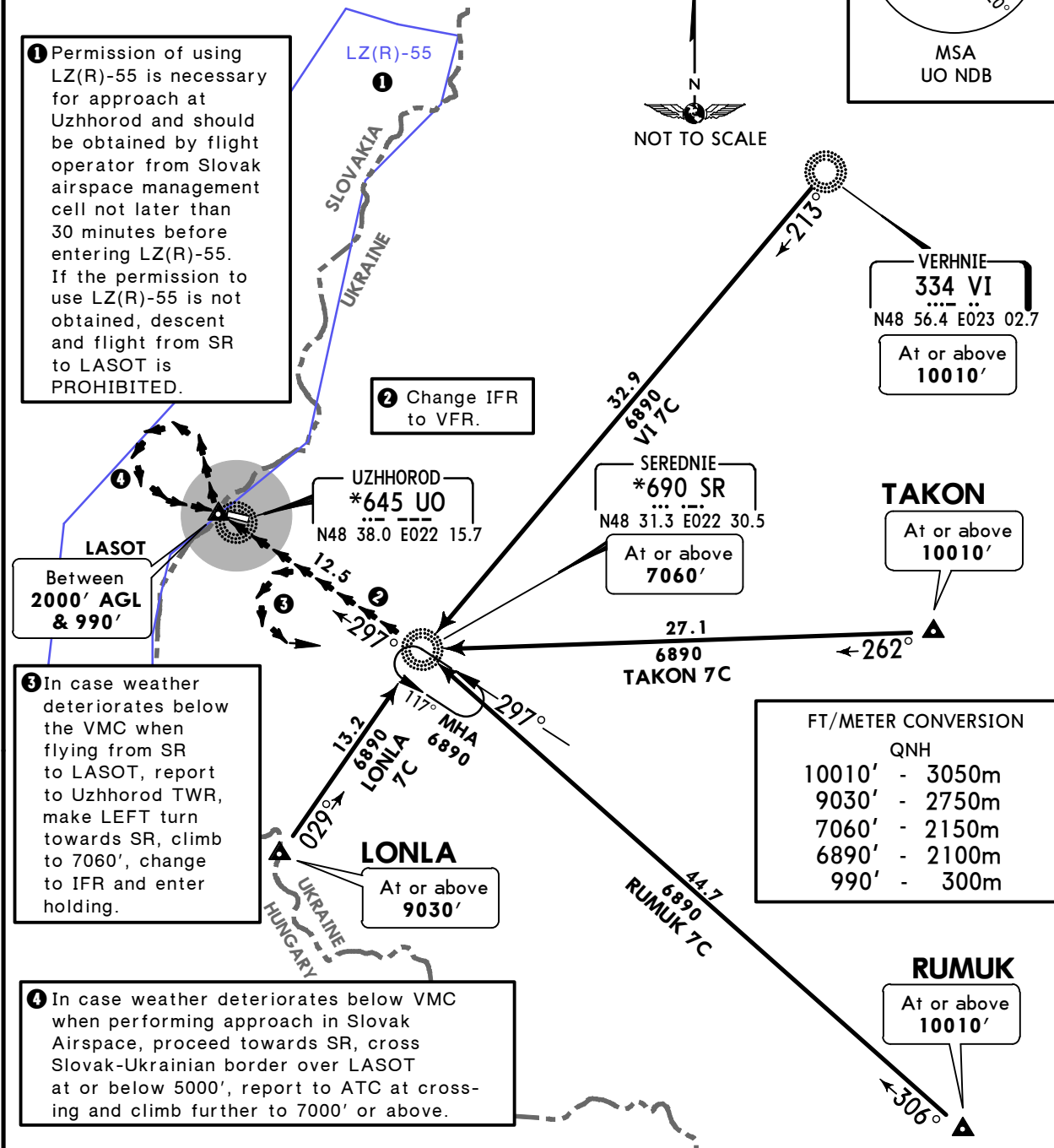
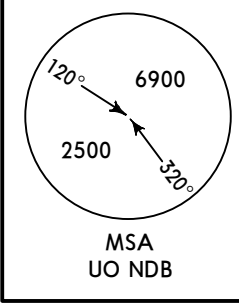
LONLA 7C, RUMUK 7C
TAKON 7C, VERHNE 7C (VI 7C)
RWY 10 ARRIVALS

1 Permission of using LZ(R)-55 is necessary for approach at Uzhhorod and should be obtained by flight operator from Slovak airspace management cell not later than 30 minutes before entering LZ(R)-55. If the permission to use LZ(R)-55 is not obtained, descent and flight from SR to LASOT is PROHIBITED.

2 Change IFR to VFR.

3 In case weather deteriorates below the VMC when flying from SR to LASOT, report to Uzhhorod TWR, make LEFT turn towards SR, climb to 7060', change to IFR and enter holding.

4 In case weather deteriorates below VMC when performing approach in Slovak Airspace, proceed towards SR, cross Slovak-Ukrainian border over LASOT at or below 5000', report to ATC at crossing and climb further to 7000' or above.



FT/METER CONVERSION

QNH	
10010'	- 3050m
9030'	- 2750m
7060'	- 2150m
6890'	- 2100m
990'	- 300m

STAR	ROUTING
LONLA 7C	On 029° bearing to SR, change to VFR and descend towards LASOT if weather conditions permit.
RUMUK 7C	On 306° bearing to SR, change to VFR and descend towards LASOT if weather conditions permit.
TAKON 7C	On 262° bearing to SR, change to VFR and descend towards LASOT if weather conditions permit.
VI 7C	On 213° bearing to SR, change to VFR and descend towards LASOT if weather conditions permit.

APPROACH
Pass LASOT at or below 2000' AGL, enter LZ(R)-55, make an approach to RWY 10 and land.

MISSED APPROACH
Report to ATC and make a RIGHT-hand pattern for another approach.

UKLU/UDJ
UZHGOROD INTL

JEPPESEN
 24 JAN 20 **(10-2A)** **Eff 30 Jan**

UZHGOROD, UKRAINE
ARRIVAL

*UZHGOROD Tower 126.9	Apt Elev 384'	Alt Set: hPa (MM on request) Trans level: By ATC Trans alt: 10010'
------------------------------------	-------------------------	--

RWY 28 ARRIVALS

Landing on RWY 28 is allowed only for helicopters and ACFT able to remain in Ukrainian airspace in case of missed approach. LEFT-hand pattern should be applied in this case.

When landing on RWY 28 request to use LZ(R)-55 not needed.

ACFT flying IFR, should arrive to SR between 7000' and 8000', change to VFR and descend toward Uzhgorod if the weather conditions permit.

If the weather conditions deteriorate below VMC when flying from SR to UKLU, report to ATC, make a LEFT-hand turn towards SR and climb to at or above 7000'.

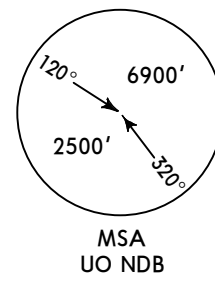
UKLU/UDJ
UZHGOROD INTL

JEPPESEN
24 JAN 20 **10-3** Eff 30 Jan

UZHGOROD, UKRAINE
SID

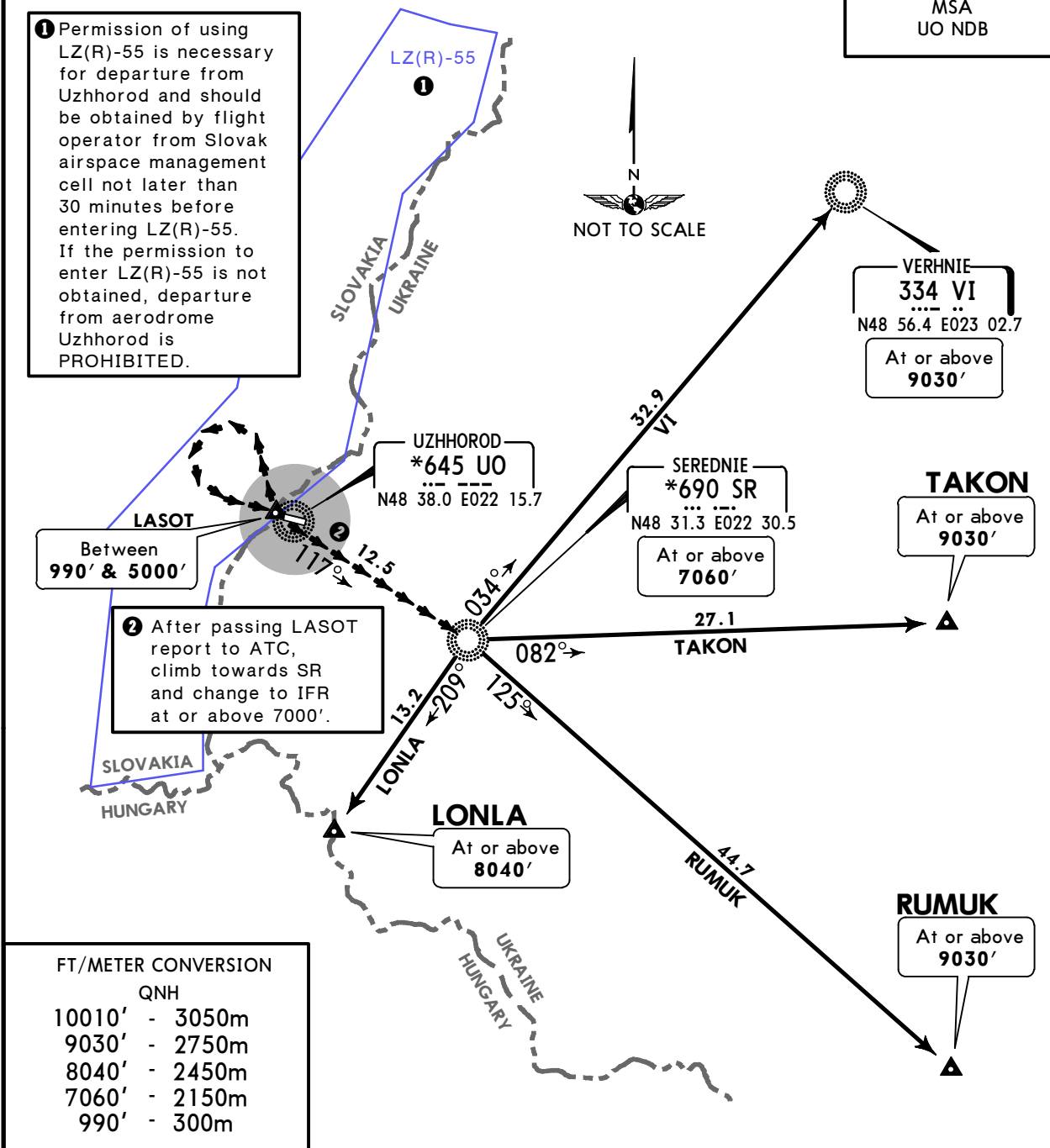
*UZHGOROD Tower 126.9	Apt Elev 384'	Trans level: By ATC Trans alt: 10010' 1. ACFT departing from aerodrome Uzhgorod and going to continue IFR should file a flight plan with information concerning established VFR route, Ukrainian-Slovak cross-border over LASOT and change from VFR to IFR before/over SR in field 15. 2. RWY 10 is not available for departure, except helicopters.
---------------------------------	-------------------------	--

**LONLA, RUMUK
TAKON, VI
RWY 28 DEPARTURES**



1 Permission of using LZ(R)-55 is necessary for departure from Uzhgorod and should be obtained by flight operator from Slovak airspace management cell not later than 30 minutes before entering LZ(R)-55. If the permission to enter LZ(R)-55 is not obtained, departure from aerodrome Uzhgorod is PROHIBITED.

2 After passing LASOT report to ATC, climb towards SR and change to IFR at or above 7000'.



FT/METER CONVERSION	
QNH	
10010'	- 3050m
9030'	- 2750m
8040'	- 2450m
7060'	- 2150m
990'	- 300m

SID	ROUTING
LONLA	After departure complete a turn in Slovak airspace back to LASOT, proceed to SR by VFR, before/over SR change to IFR, 209° bearing from SR to LONLA.
RUMUK	After departure complete a turn in Slovak airspace back to LASOT, proceed to SR by VFR, before/over SR change to IFR, 125° bearing from SR to RUMUK.
TAKON	After departure complete a turn in Slovak airspace back to LASOT, proceed to SR by VFR, before/over SR change to IFR, 082° bearing from SR to TAKON.
VI	After departure complete a turn in Slovak airspace back to LASOT, proceed to SR by VFR, before/over SR change to IFR, 034° bearing from SR to VI.

UKLU/UDJ

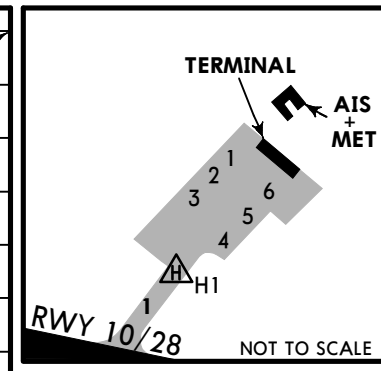
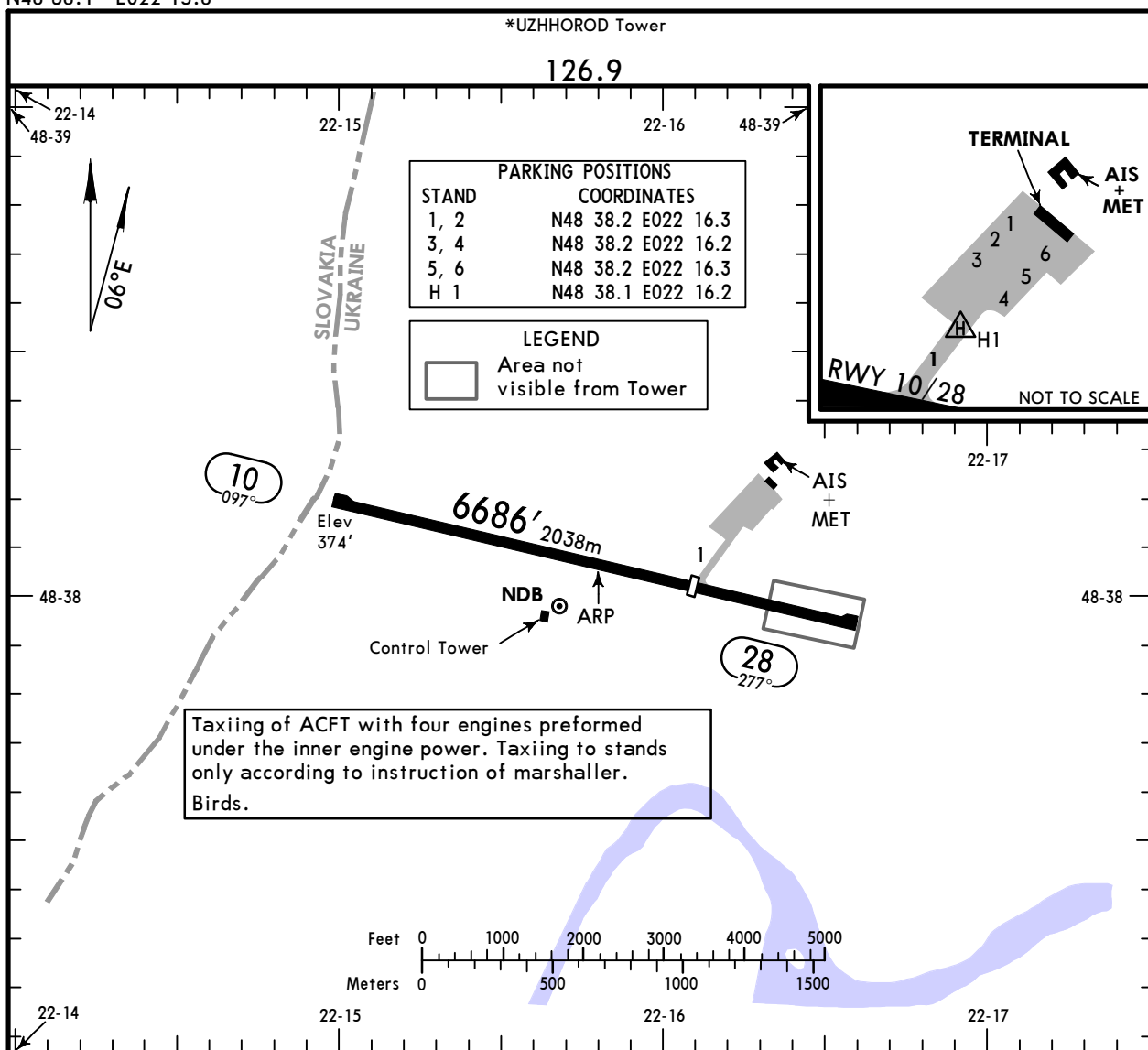
Apt Elev **384'**
N48 38.1 E022 15.8



24 JAN 20 **10-9** Eff 30 Jan

UZZHOROD, UKRAINE

UZZHOROD INTL



ADDITIONAL RUNWAY INFORMATION				
RWY	USABLE LENGTHS	LANDING BEYOND		
		Threshold	Glide Slope	TAKE-OFF
10 28	RL (60m)	① 4593' 1400m ②		③ ④

- ① LDA 6467' (1971m)
- ② LDA 4364' (1330m)
- ③ take-off from rwy 10 is prohibited, except helicopters.
- ④ TAKE-OFF RUN AVAILABLE

From rwy head	6457' (1968m)
twy 1 int	4364' (1330m)

JAR-OPS	TAKE-OFF
A B C D	VMC ONLY

Chart changes since cycle 09-2020

ADD = added chart, REV = revised chart, DEL = deleted chart.

ACT	PROCEDURE IDENT	INDEX	REV DATE	EFF DATE
-----	-----------------	-------	----------	----------

UZHHOROD, (UZHHOROD INTL - UKLU)

TERMINAL CHART CHANGE NOTICES

No Chart Change Notices for Airport UKLU