

## List of pages in this Trip Kit

Trip Kit Index

Airport Information For UKLR

Terminal Charts For UKLR

Revision Letter For Cycle 10-2020

Change Notices

Notebook

## General Information

Location: RIVNE UKR  
ICAO/IATA: UKLR / RWN  
Lat/Long: N50° 36.50', E026° 08.38'  
Elevation: 755 ft

Airport Use: Public  
Daylight Savings: Observed  
UTC Conversion: -2:00 = UTC  
Magnetic Variation: 6.0° E

Fuel Types: Jet A-1  
Customs: Yes  
Airport Type: IFR  
Landing Fee: Yes  
Control Tower: Yes  
Jet Start Unit: No  
LLWS Alert: No  
Beacon: No

Sunrise: 0207 Z  
Sunset: 1820 Z

## Runway Information

Runway: 11  
Length x Width: 8615 ft x 138 ft  
Surface Type: concrete  
TDZ-Elev: 748 ft  
Lighting: Edge, ALS

Runway: 29  
Length x Width: 8615 ft x 138 ft  
Surface Type: concrete  
TDZ-Elev: 751 ft  
Lighting: Edge, ALS

## Communication Information

Rivne Tower: 123.700

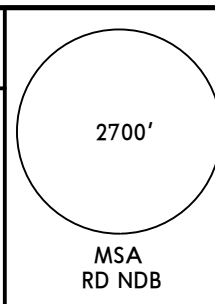
**UKLR/RWN**  
RIVNE

**JEPPESEN**  
27 JAN 17 **10-2** **Eff 2 Feb**

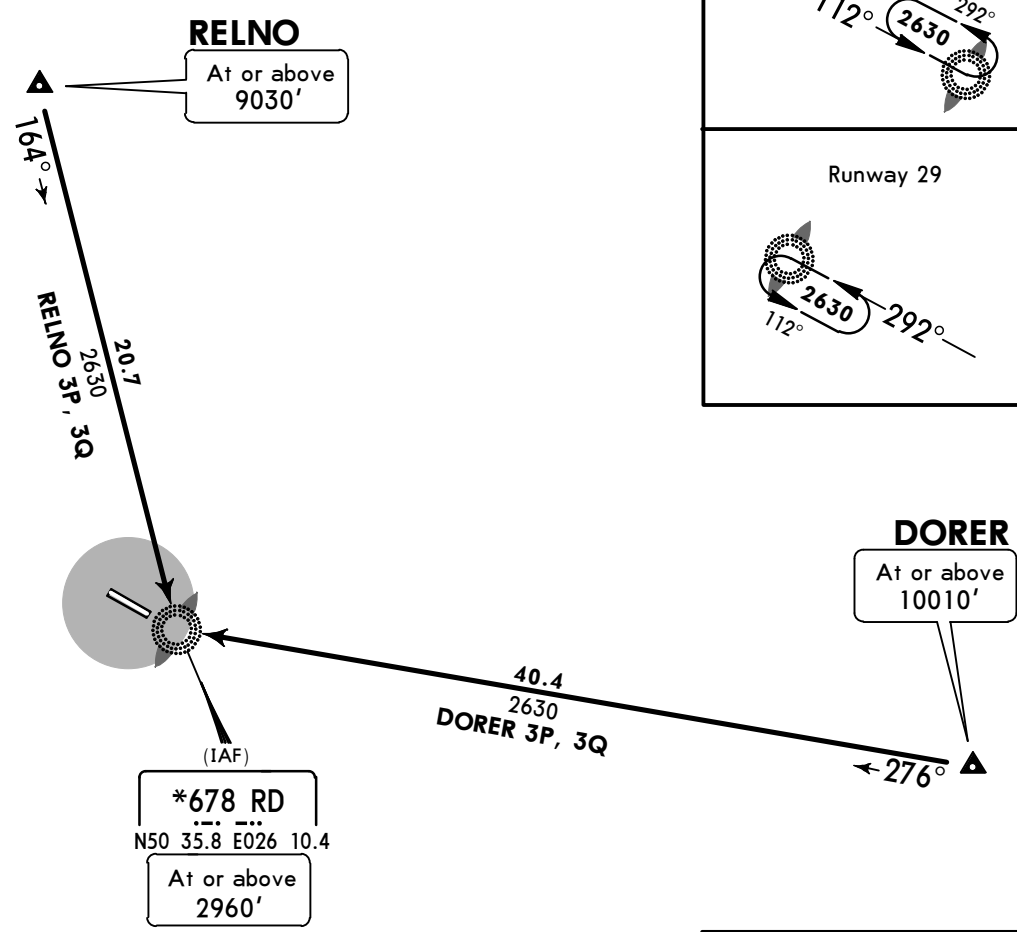
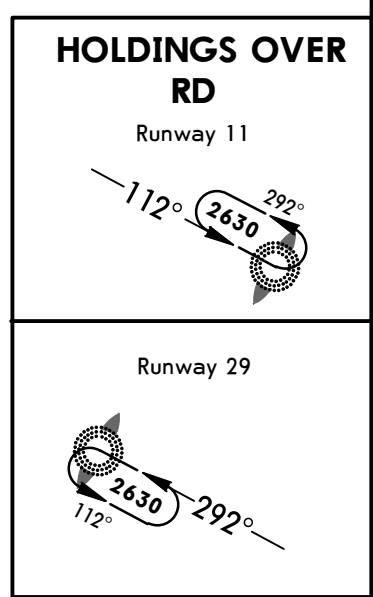
**RIVNE, UKRAINE**  
**STAR**

Apt Elev  
**755'**

Alt Set: hPa  
Trans level: By ATC Trans alt: 10010'



**DORER 3P [DORE3P]**  
**DORER 3Q [DORE3Q]**  
**RELNO 3P [RELN3P]**  
**RELNO 3Q [RELN3Q]**  
**ARRIVALS**



**FT/METER CONVERSION**

QNH

10010'	-	3050m
9030'	-	2750m
2960'	-	900m
2630'	-	800m

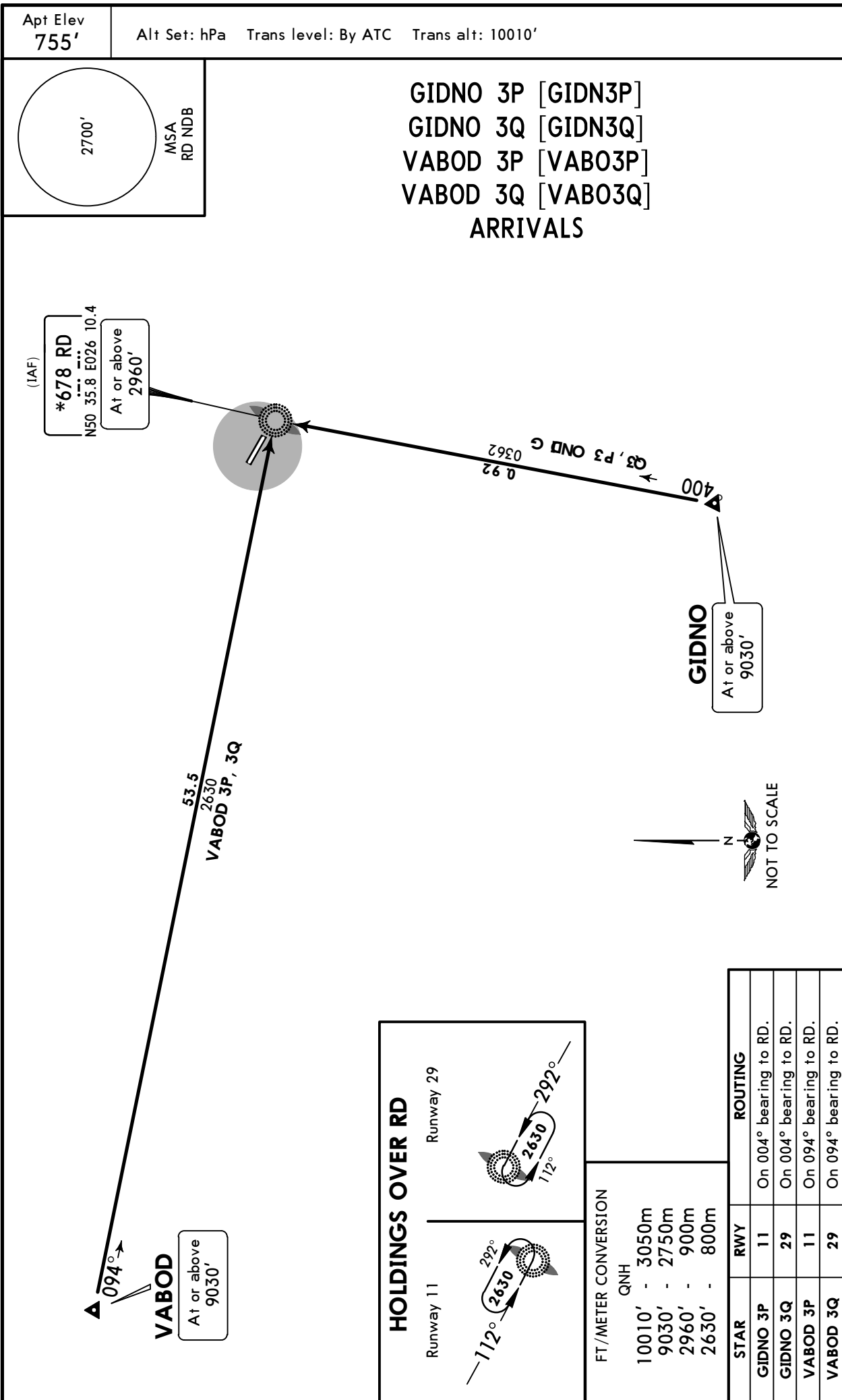
STAR	RWY	ROUTING
DORER 3P	11	On 276° bearing to RD.
DORER 3Q	29	On 276° bearing to RD.
RELNO 3P	11	On 164° bearing to RD.
RELNO 3Q	29	On 164° bearing to RD.

CHANGES: Chart reindexed; tempo stamp removed.

UKLR/RWN  
RIVNE

JEPPESEN  
27 JAN 17 (10-2A) Eff 2 Feb

RIVNE, UKRAINE  
STAR



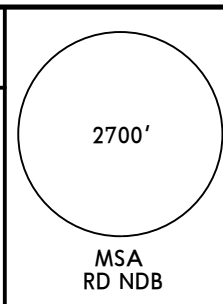
UKLR/RWN  
RIVNE

JEPPESEN  
27 JAN 17 10-3 Eff 2 Feb

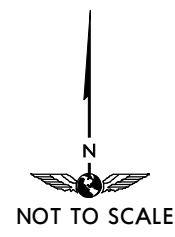
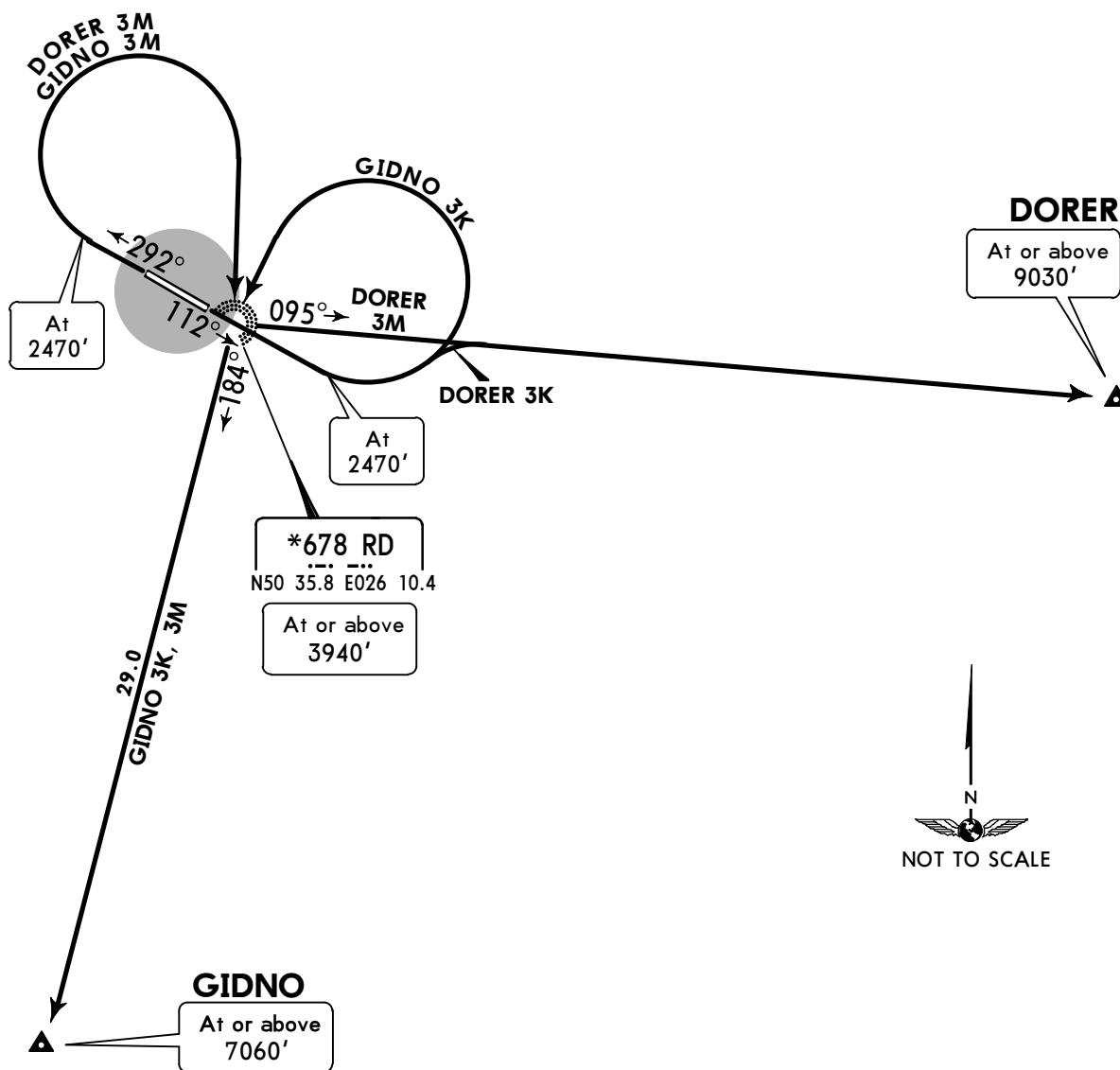
RIVNE, UKRAINE  
SID

Apt Elev  
755'

Trans level: By ATC Trans alt: 10010'  
RWY 11: EXPECT close-in obstacles.



DORER 3K [DORE3K]  
DORER 3M [DORE3M]  
GIDNO 3K [GIDN3K]  
GIDNO 3M [GIDN3M]  
DEPARTURES



FT/METER CONVERSION	
QNH	
2470'	- 750m
3940'	- 1200m
7060'	- 2150m
9030'	- 2750m
10010'	- 3050m

SID	RWY	ROUTING
DORER 3K	11	Climb on 112° track to 2470', turn LEFT, intercept 095° bearing from RD to DORER.
DORER 3M	29	Climb on 292° track to 2470', turn RIGHT to RD, turn LEFT, intercept 095° bearing from RD to DORER.
GIDNO 3K	11	Climb on 112° track to 2470', turn LEFT to RD, turn LEFT, 184° track to GIDNO.
GIDNO 3M	29	Climb on 292° track to 2470', turn RIGHT to RD, turn RIGHT, 184° track to GIDNO.

UKLR/RWN  
RIVNE

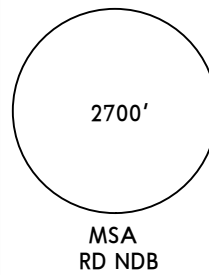
JEPPESEN  
27 JAN 17 (10-3A) Eff 2 Feb

RIVNE, UKRAINE

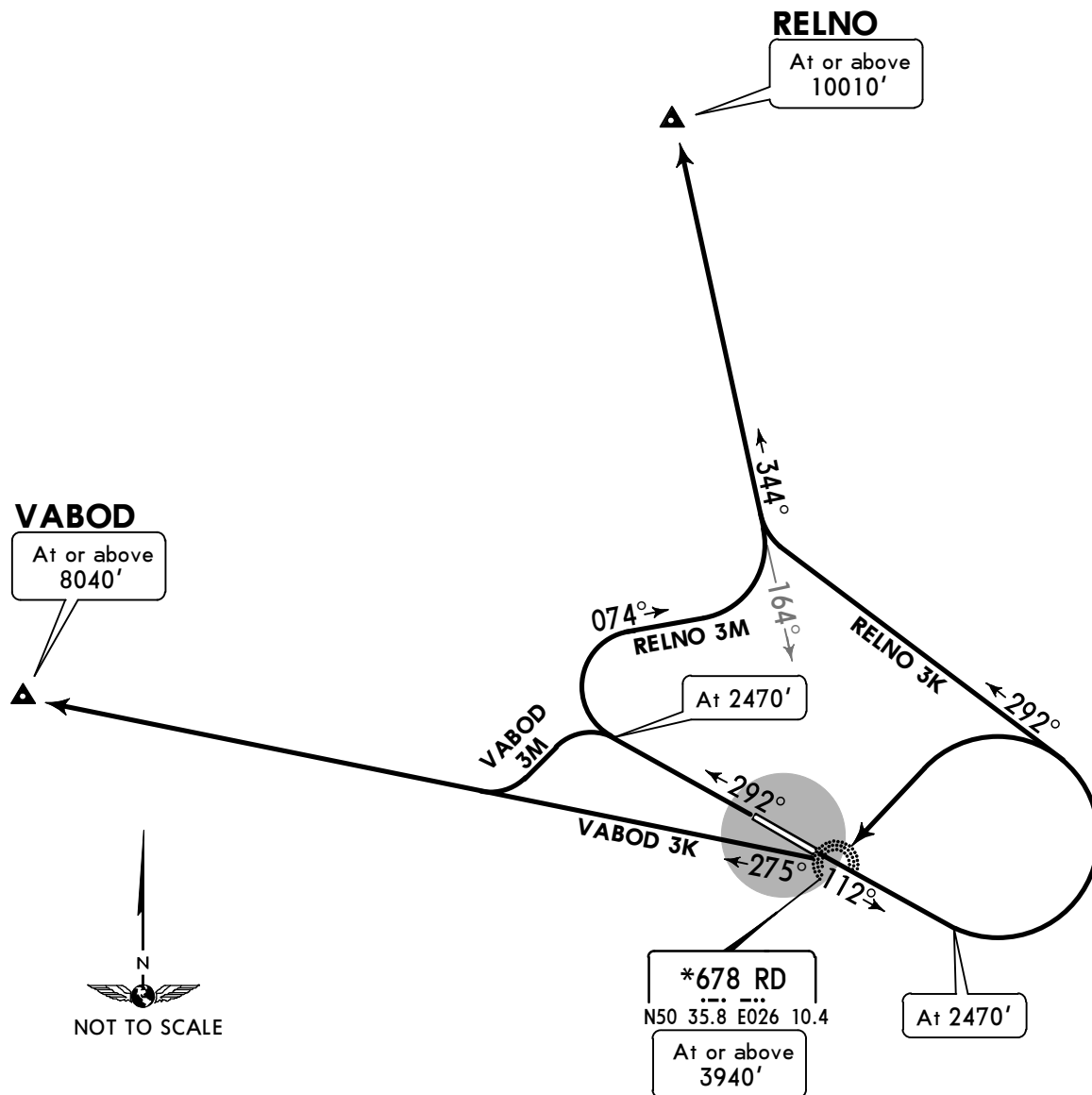
SID

Apt Elev  
755'

Trans level: By ATC Trans alt: 10010'  
RWY 11: EXPECT close-in obstacles.



RELNO 3K [RELN3K]  
RELNO 3M [RELN3M]  
VABOD 3K [VABO3K]  
VABOD 3M [VABO3M]  
DEPARTURES



FT/METER CONVERSION	
QNH	
2470'	- 750m
3940'	- 1200m
8040'	- 2450m
10010'	- 3050m

SID	RWY	ROUTING
RELNO 3K	11	Climb on 112° track to 2470', turn LEFT, 292° track, turn RIGHT, intercept 344° bearing from RD to RELNO.
RELNO 3M	29	Climb on 292° track to 2470', turn RIGHT, 074° track, turn LEFT, intercept 344° bearing from RD to RELNO.
VABOD 3K	11	Climb on 112° track to 2470', turn LEFT to RD, turn RIGHT, 275° track to VABOD.
VABOD 3M	29	Climb on 292° track to 2470', turn LEFT, intercept 275° bearing from RD to VABOD.

**UKLR/RWN**

Apt Elev **755'**  
N50 36.5 E026 08.4

**JEPPesen**

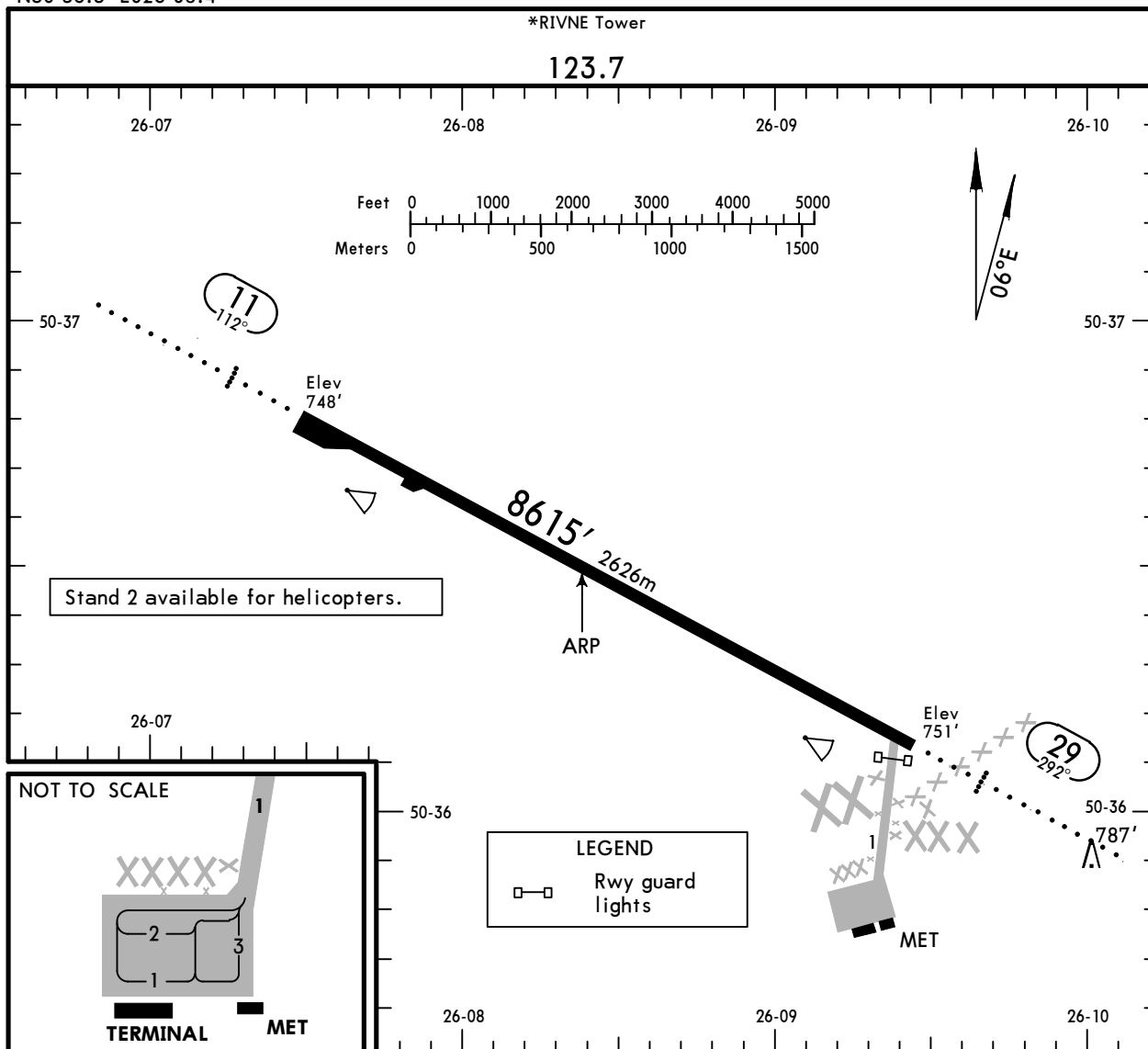
24 JAN 20

**(10-9)**

**Eff 30 Jan**

**RIVNE, UKRAINE**

**RIVNE INTL.**



**ADDITIONAL RUNWAY INFORMATION**

RWY					USABLE LENGTHS		WIDTH	
					Threshold	Glide Slope		TAKE-OFF
11	RL (60m)	ALS	PAPI-L (angle 2.70°)	RVR	①		8123' 2476m	138'
29	RL (60m)	ALS	PAPI-L (angle 3.00°)	RVR				42m

① LDA 8123' (2476m)

	TAKE-OFF		
	Low Visibility Take-off		
	Day: RL & RCLM Night: RL	Day: RL or RCLM Night: RL	Adequate vis ref (Day only)
A			
B			
C	RVR 300m	400m	500m
D			

(CIO) Close-in obstacle: 787' petrol station 0.4NM (809m) in front of THR Rwy 29.

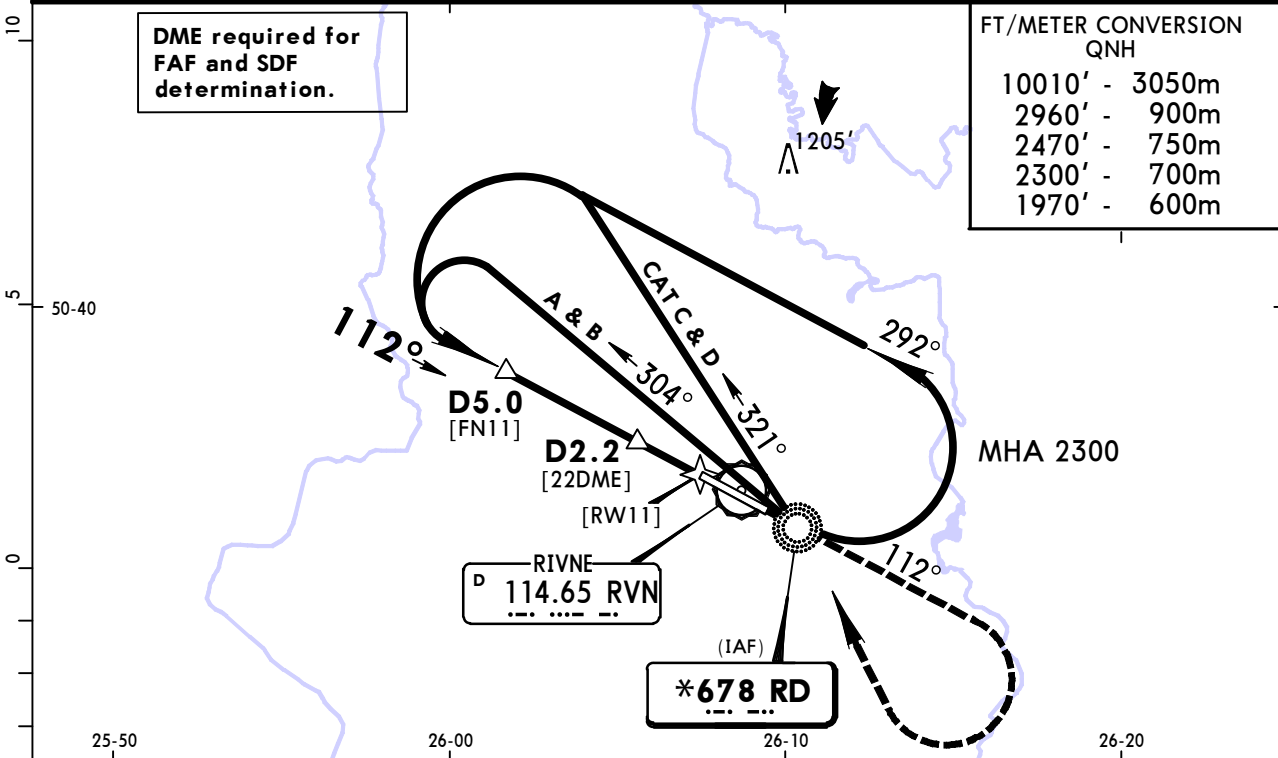
# UKLR/RWN RIVNE

**JEPPESENN**  
4 AUG 17 (16-1) Eff 17 Aug

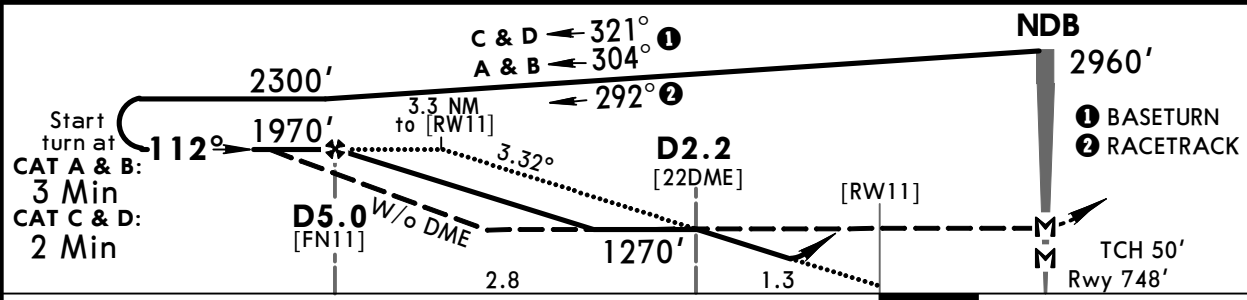
# RIVNE, UKRAINE NDB Rwy 11

*RIVNE Tower					<div style="border: 1px solid black; border-radius: 50%; width: 100px; height: 100px; margin: 0 auto;"></div> <p>2700'</p> <p>MSA RD NDB</p>
123.7					
NDB RD *678	Final Apch Crs 112°	With DME Minimum Alt D5.0 1970' (1222')	With DME DA/MDA(H) 1120' (372')	Apt Elev 755' Rwy 748'	
<p><b>MISSED APCH:</b> Climb on 112° to 2470', then turn RIGHT to RD NDB climbing to 2960', then according to chart.</p>					

Alt Set: hPa      Rwy Elev: 27 hPa      Trans level: By ATC      Trans alt: 10010'



Dist to RW11	3.0	2.0
ALTITUDE	1870'	1510'



Gnd speed-Kts	70	90	100	120	140	160	PAPI 2470' on 112° 2960' RT RD 678
Descent Angle	3.32°	411	529	587	705	822	

	STRAIGHT-IN LANDING RWY 11			CIRCLE-TO-LAND		
	with DME CDFA DA/MDA(H)	ALS out	w/o DME non-CDFA MDA(H)	ALS out	Max Kts	MDA(H) VIS
A	1120' (372')	RVR 1500m	1270' (522')	RVR 2600m	100	1280' (525') 1 1500m
B		RVR 1500m		RVR 2400m	135	1280' (525') 1 1600m
C		RVR 1500m		RVR 2600m	180	1360' (605') 1 2400m
D		RVR 1700m		RVR 2800m	205	1460' (705') 3600m

1 or higher straight-in minimums

CHANGES: Procedure. Minimums.

© JEPPESENN, 2016, 2017. ALL RIGHTS RESERVED.



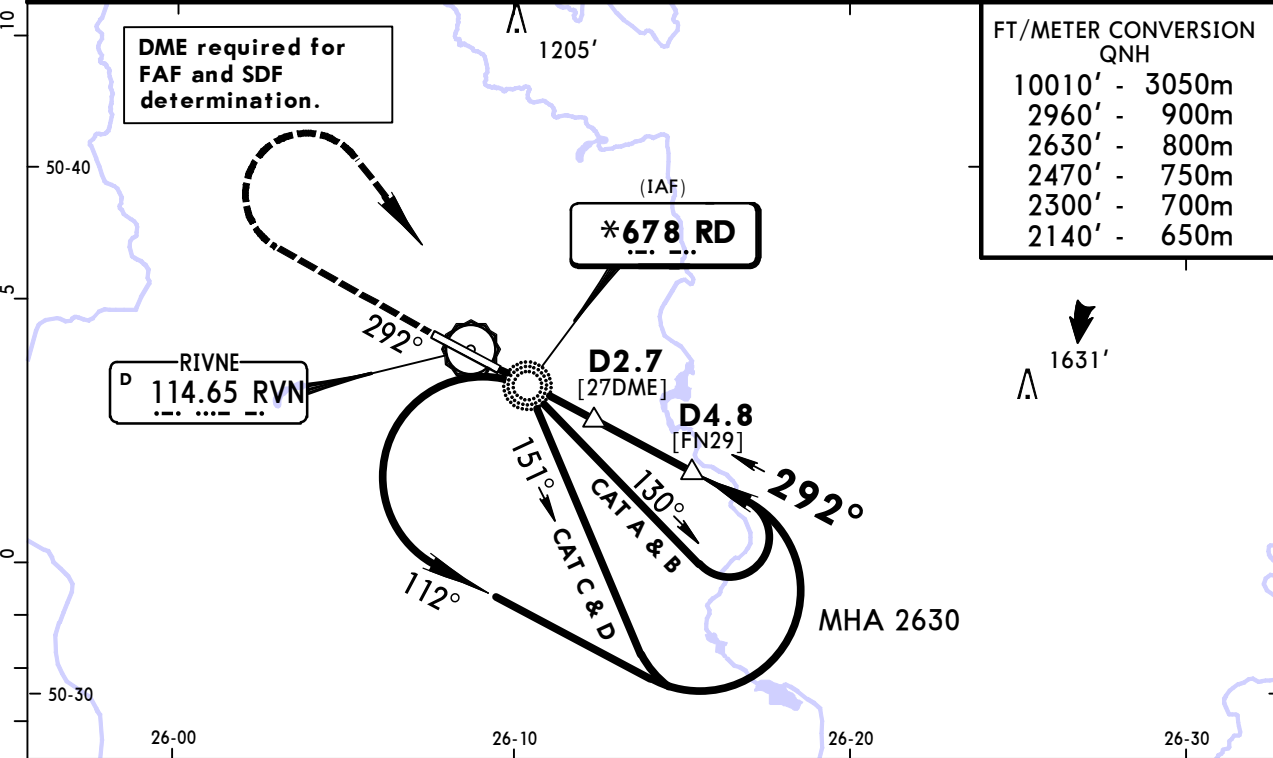
# UKLR/RWN RIVNE

**JEPPESSEN**  
4 AUG 17 (16-2) Eff 17 Aug

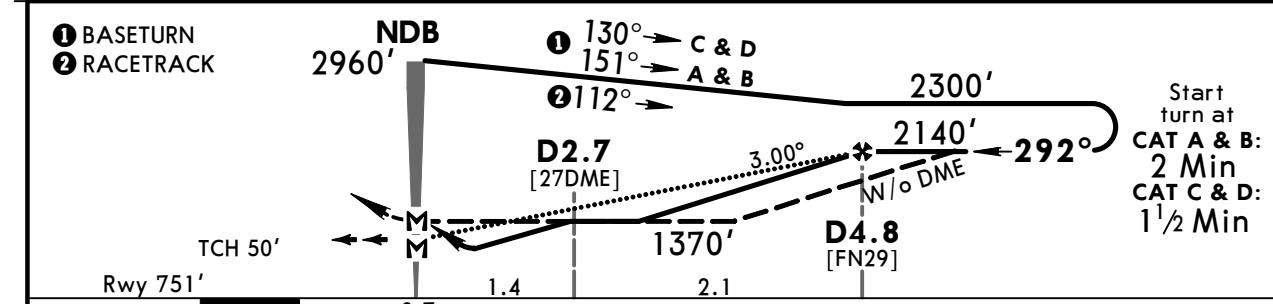
# RIVNE, UKRAINE NDB Rwy 29

*RIVNE Tower					<div style="border: 1px solid black; border-radius: 50%; width: 100px; height: 100px; margin: 0 auto;"></div> <p style="text-align: center;">2700'</p> <p style="text-align: center;">MSA RD NDB</p>
123.7					
NDB RD <b>*678</b>	Final Apch Crs <b>292°</b>	With DME Minimum Alt <b>D4.8</b> <b>2140'</b> (1389')	With DME DA/MDA(H) <b>1120'</b> (369')	Apt Elev 755'  Rwy 751'	
<b>MISSED APCH: Climb on 292° to 2470', then turn RIGHT to RD NDB climbing to 2960', then according to chart.</b>					

Alt Set: hPa      Rwy Elev: 27 hPa      Trans level: By ATC      Trans alt: 10010'



DIST to NDB	1.0	2.0	3.0
ALTITUDE	1350'	1670'	1990'



Gnd speed-Kts	70	90	100	120	140	160	ALS PAPI	2470'	on 292°	2960'	RD 678
Descent Angle	3.00°	372	478	531	637	743		849			

	STRAIGHT-IN LANDING RWY 29			CIRCLE-TO-LAND		
	with DME CDFA DA/MDA(H)	ALS out	w/o DME non-CDFA MDA(H)	ALS out	Max Kts.      MDA(H)      VIS	
A	RVR 1500m	RVR 1500m	RVR 2800m	RVR 3000m	100      1370' (615')      1 1500m	
B		RVR 1500m	RVR 2800m	RVR 3000m	135      1370' (615')      1 1600m	
C		RVR 1500m	RVR 1700m	RVR 3000m	RVR 3200m	180      1360' (605')      1 2400m
D		RVR 1500m	RVR 1700m	RVR 3000m	RVR 3200m	205      1460' (705')      3600m

## Chart changes since cycle 09-2020

ADD = added chart, REV = revised chart, DEL = deleted chart.

ACT	PROCEDURE IDENT	INDEX	REV DATE	EFF DATE
-----	-----------------	-------	----------	----------

RIVNE, (RIVNE INTL - UKLR)

## TERMINAL CHART CHANGE NOTICES

### Chart Change Notices for Airport UKLR

**Type:** Terminal

**Effectivity:** Permanent

**Begin Date:** 20181108

**End Date:** No end date

Airport name changed from Rivne to Rivne Intl.