

List of pages in this Trip Kit

Trip Kit Index

Airport Information For UKLN

Terminal Charts For UKLN

Revision Letter For Cycle 02-2021

Change Notices

Notebook

General Information

Location: CHERNIVTSI UKR
ICAO/IATA: UKLN / CWC
Lat/Long: N48° 15.57', E025° 58.80'
Elevation: 827 ft

Airport Use: Public
Daylight Savings: Observed
UTC Conversion: -2:00 = UTC
Magnetic Variation: 5.0° E

Fuel Types: Jet A-1
Customs: Yes
Airport Type: IFR
Landing Fee: Yes
Control Tower: Yes
Jet Start Unit: No
LLWS Alert: No
Beacon: No

Sunrise: 0559 Z
Sunset: 1455 Z

Runway Information

Runway: 15
Length x Width: 7270 ft x 138 ft
Surface Type: asphalt
TDZ-Elev: 801 ft
Lighting: Edge, ALS

Runway: 33
Length x Width: 7270 ft x 138 ft
Surface Type: asphalt
TDZ-Elev: 826 ft
Lighting: Edge, ALS

Communication Information

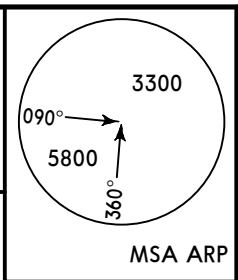
Chernivtsi Tower: 121.300
Lviv Information: 130.700 Flight Info Service RCO

UKLN/CWC
CHERNIVTSI INTL

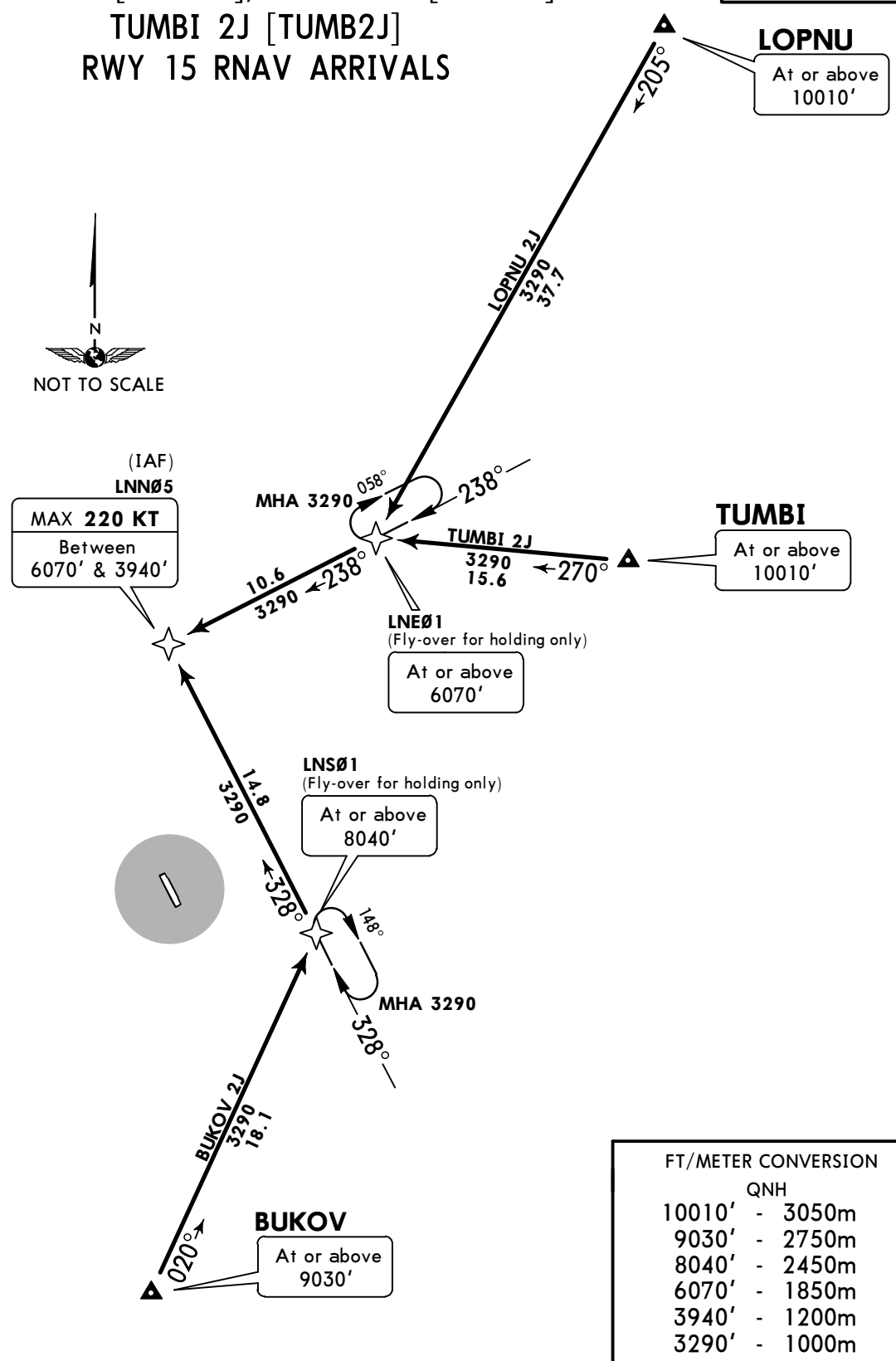
JEPPESSEN
2 NOV 18 **10-2** **Eff 8 Nov**

CHERNIVTSI, UKRAINE
RNAV STAR

Apt Elev **827'**
Alt Set: hPa
Trans level: By ATC Trans alt: 10010'
1. RNAV 1 (GNSS).
2. GNSS required.
3. RNAV 1 (P-RNAV) approval required otherwise advise ATC.



**BUKOV 2J [BUK02J], LOPNU 2J [LOPN2J]
TUMBI 2J [TUMB2J]
RWY 15 RNAV ARRIVALS**



FT/METER CONVERSION	
QNH	
10010'	- 3050m
9030'	- 2750m
8040'	- 2450m
6070'	- 1850m
3940'	- 1200m
3290'	- 1000m

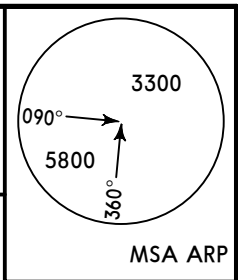
STAR	ROUTING
BUKOV 2J	BUKOV (9030'+) - LNS01 (8040'+) - LNN05 (K220-; 6070'-; 3940'+).
LOPNU 2J	LOPNU (10010'+) - LNE01 (6070'+) - LNN05 (K220-; 6070'-; 3940'+).
TUMBI 2J	TUMBI (10010'+) - LNE01 (6070'+) - LNN05 (K220-; 6070'-; 3940'+).

UKLN/CWC
CHERNIVTSI INTL

JEPPESEN
 2 NOV 18 **(10-2A)** **Eff 8 Nov**

CHERNIVTSI, UKRAINE
RNAV STAR

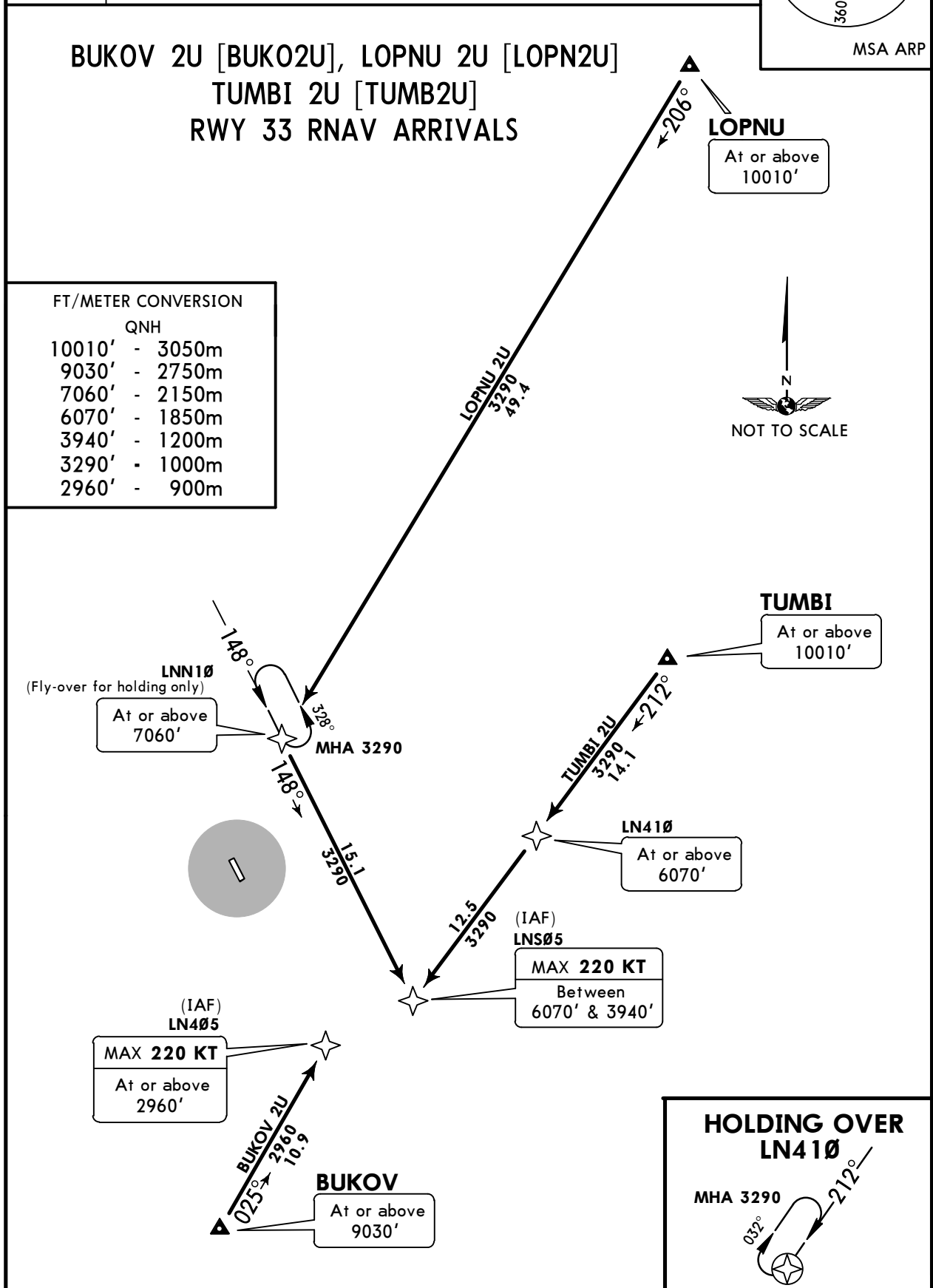
Apt Elev **827'**
 Alt Set: hPa
 Trans level: By ATC Trans alt: 10010'
 1. RNAV 1 (GNSS).
 2. GNSS required.
 3. RNAV 1 (P-RNAV) approval required otherwise advise ATC.



**BUKOV 2U [BUKO2U], LOPNU 2U [LOPN2U]
 TUMBI 2U [TUMB2U]
 RWY 33 RNAV ARRIVALS**

FT/METER CONVERSION

QNH	
10010'	- 3050m
9030'	- 2750m
7060'	- 2150m
6070'	- 1850m
3940'	- 1200m
3290'	- 1000m
2960'	- 900m



STAR	ROUTING
BUKOV 2U	BUKOV (9030'+) - LN405 (K220-; 2960'+).
LOPNU 2U	LOPNU (10010'+) - LNN10 (7060'+) - LNS05 (K220-; 6070'-; 3940'+).
TUMBI 2U	TUMBI (10010'+) - LN410 (6070'+) - LNS05 (K220-; 6070'-; 3940'+).

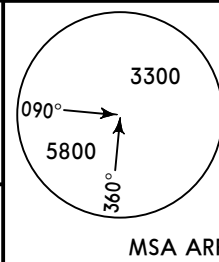
UKLN/CWC
CHERNIVTSI INTL

JEPPESEN
 2 NOV 18 **10-2B** **Eff 8 Nov**

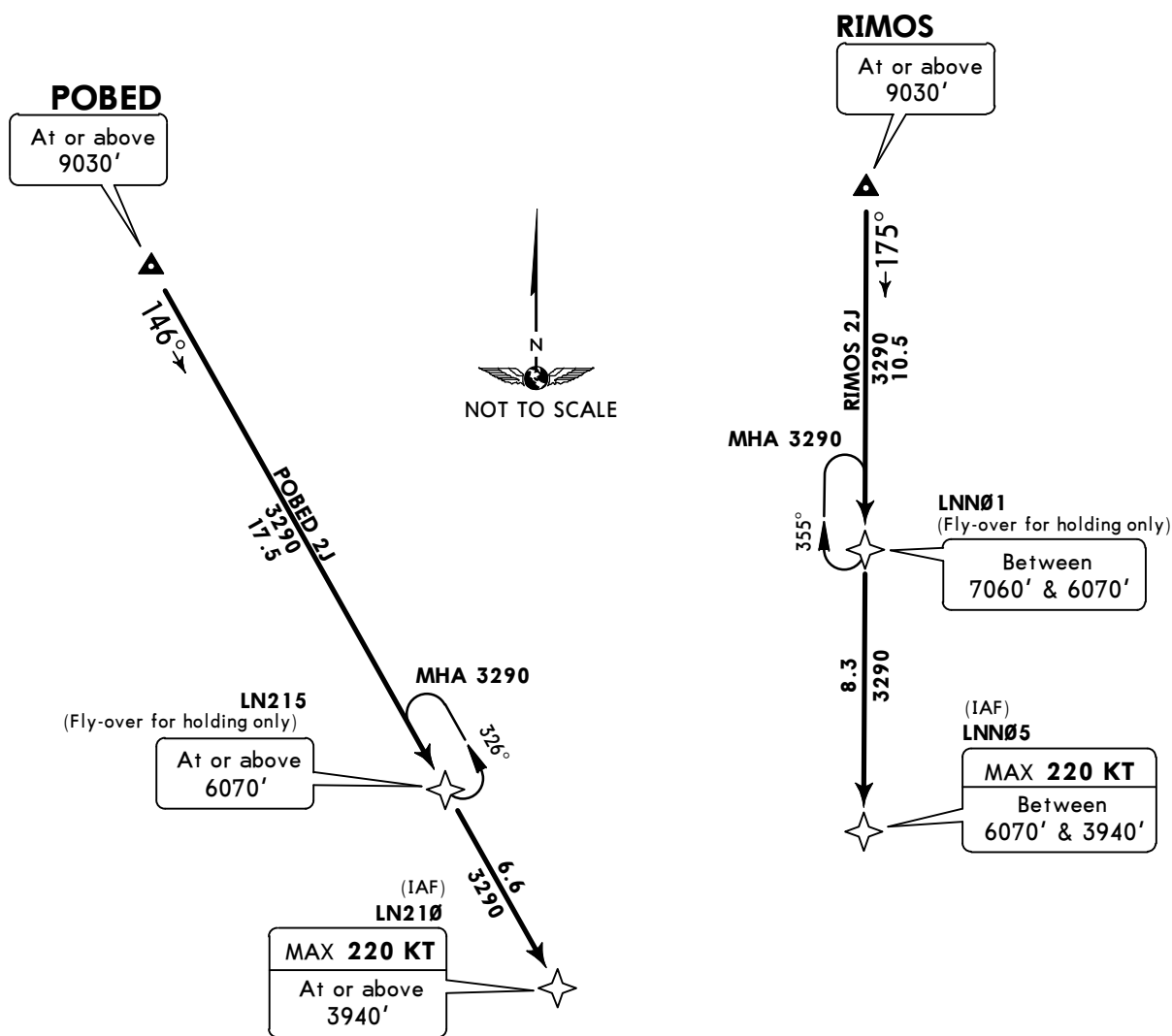
CHERNIVTSI, UKRAINE
RNAV STAR

Apt Elev
827'

Alt Set: hPa
 Trans level: By ATC Trans alt: 10010'
 1. RNAV 1 (GNSS).
 2. GNSS required.
 3. RNAV 1 (P-RNAV) approval required otherwise advise ATC.



POBED 2J [POBE2J], RIMOS 2J [RIMO2J]
RWY 15 RNAV ARRIVALS



FT/METER CONVERSION	
QNH	
10010'	- 3050m
9030'	- 2750m
7060'	- 2150m
6070'	- 1850m
3940'	- 1200m
3290'	- 1000m

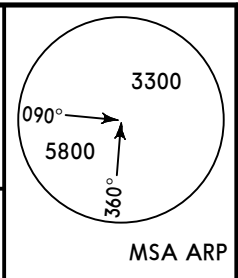
STAR	ROUTING
POBED 2J	POBED (9030'+) - LN215 (6070'+) - LN210 (K220-; 3940'+).
RIMOS 2J	RIMOS (9030'+) - LNN01 (7060'-; 6070'+) - LNN05 (K220-; 6070'-; 3940'+).

UKLN/CWC
CHERNIVTSI INTL

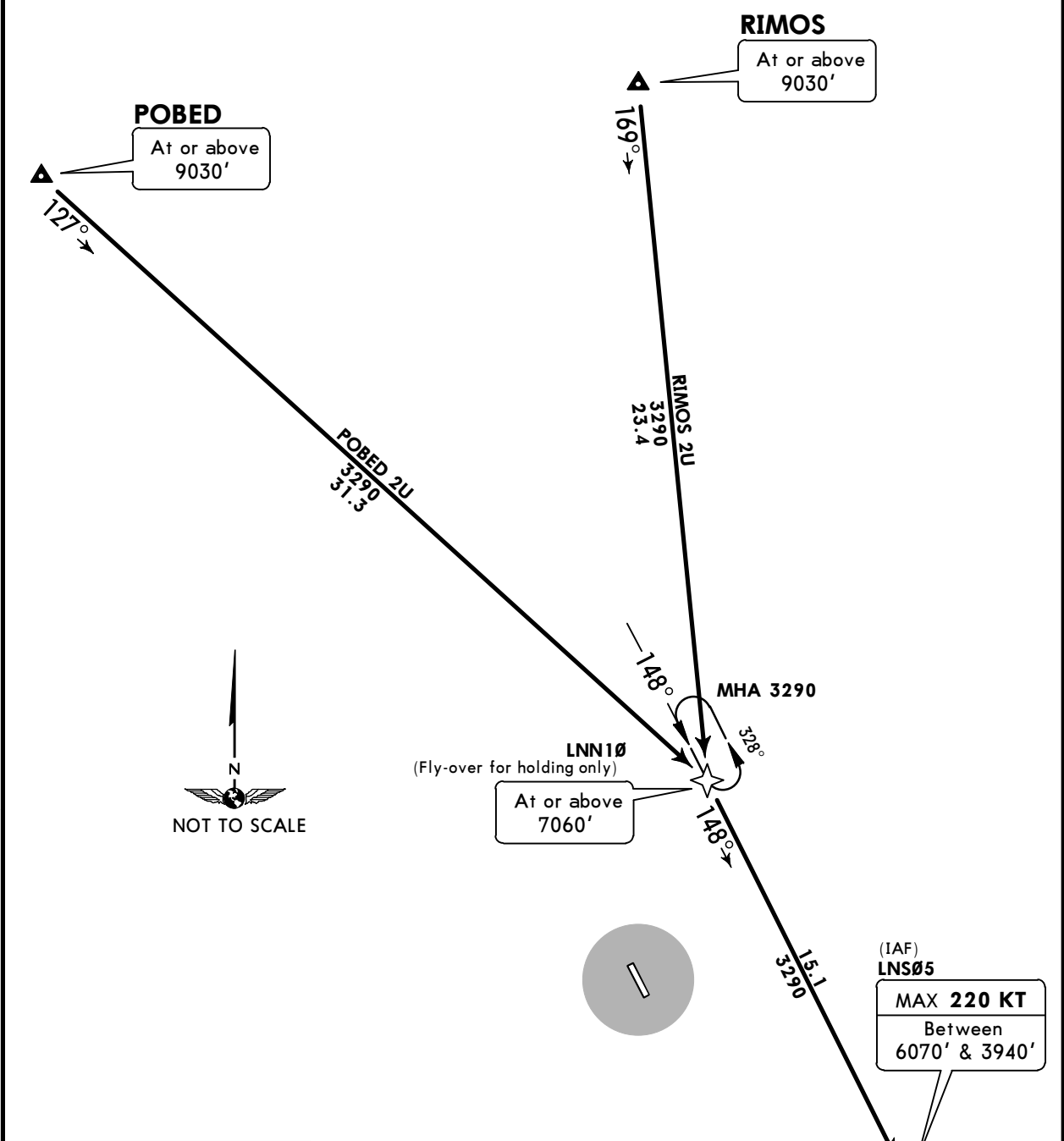
JEPPESEN
 2 NOV 18 **(10-2C)** **Eff 8 Nov**

CHERNIVTSI, UKRAINE
RNAV STAR

Apt Elev **827'**
 Alt Set: hPa
 Trans level: By ATC Trans alt: 10010'
 1. RNAV 1 (GNSS).
 2. GNSS required.
 3. RNAV 1 (P-RNAV) approval required otherwise advise ATC.



POBED 2U [POBE2U], RIMOS 2U [RIMO2U]
RWY 33 RNAV ARRIVALS



FT/METER CONVERSION

QNH

10010'	-	3050m
9030'	-	2750m
7060'	-	2150m
6070'	-	1850m
3940'	-	1200m
3290'	-	1000m

STAR	ROUTING
POBED 2U	POBED (9030'+) - LNN10 (7060'+) - LNS05 (K220-; 6070'-; 3940'+).
RIMOS 2U	RIMOS (9030'+) - LNN10 (7060'+) - LNS05 (K220-; 6070-; 3940'+).

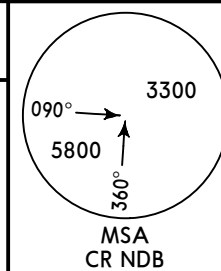
UKLN/CWC
CHERNIVTSI INTL

JEPPESEN
 2 NOV 18 **(10-2D)** **Eff 8 Nov**

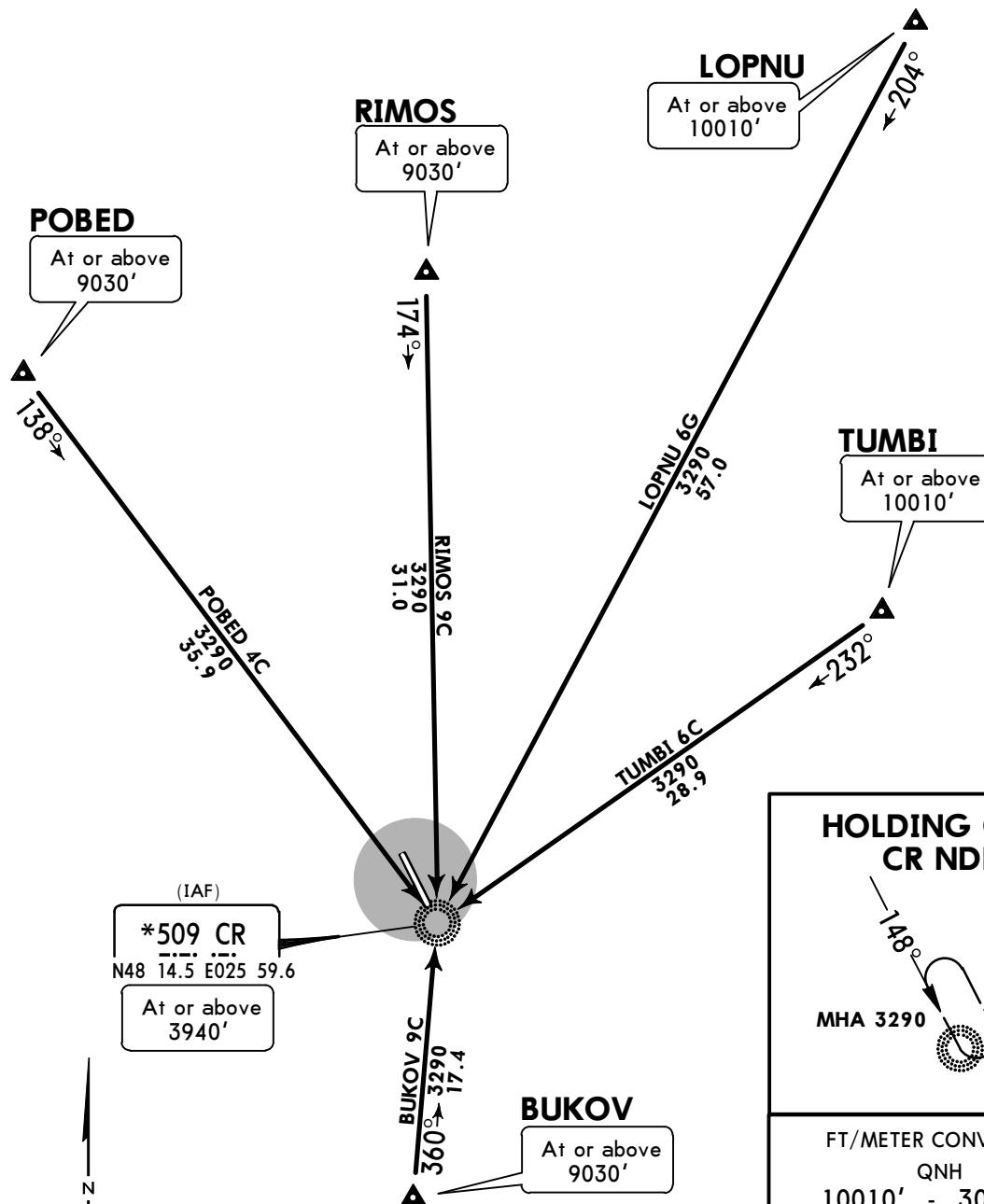
CHERNIVTSI, UKRAINE

STAR

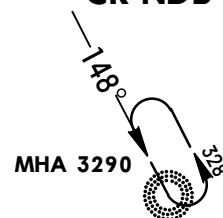
Apt Elev **827'**
 Alt Set: hPa
 Trans level: By ATC Trans alt: 10010'



BUKOV 9C [BUK09C]
LOPNU 6G [LOPN6G]
POBED 4C [POBE4C]
RIMOS 9C [RIM09C]
TUMBI 6C [TUMB6C]
RWY 15 ARRIVALS



HOLDING OVER CR NDB



FT/METER CONVERSION

FT	METER
10010'	3050m
9030'	2750m
3940'	1200m
3290'	1000m

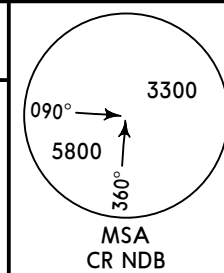
STAR	ROUTING
BUKOV 9C	On 360° track to CR NDB, then according to approach chart.
LOPNU 6G	On 204° track to CR NDB, then according to approach chart.
POBED 4C	On 138° track to CR NDB, then according to approach chart.
RIMOS 9C	On 174° track to CR NDB, then according to approach chart.
TUMBI 6C	On 232° track to CR NDB, then according to approach chart.

UKLN/CWC
CHERNIVTSI INTL

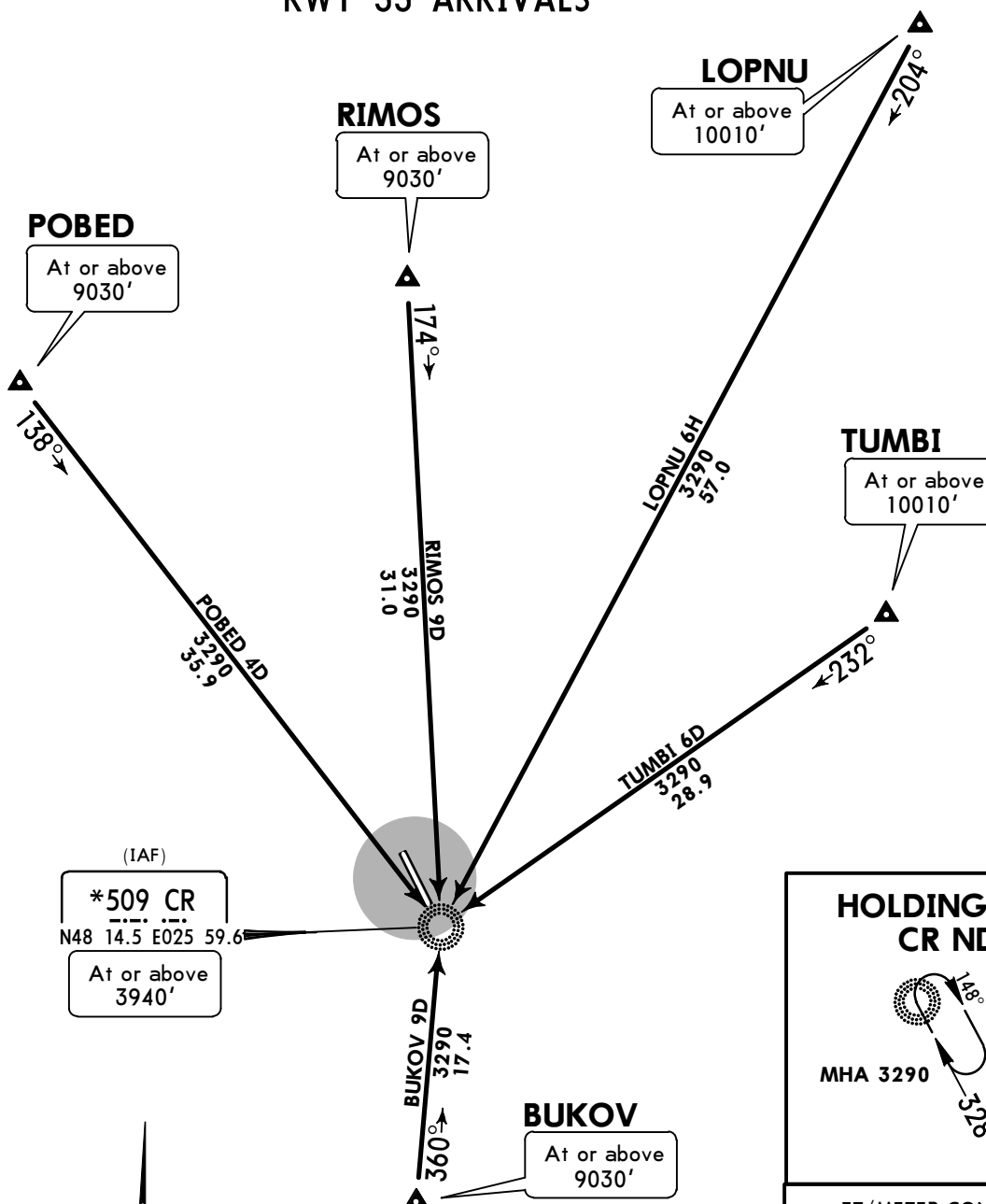
JEPPESEN
2 NOV 18 **10-2E** Eff 8 Nov

CHERNIVTSI, UKRAINE
STAR

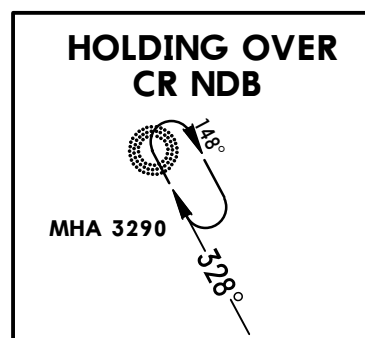
Apt Elev **827'**
Alt Set: hPa
Trans level: By ATC Trans alt: 10010'



BUKOV 9D [BUK09D]
LOPNU 6H [LOPN6H]
POBED 4D [POBE4D]
RIMOS 9D [RIMO9D]
TUMBI 6D [TUMB6D]
RWY 33 ARRIVALS



(IAF)
***509 CR**
N48 14.5 E025 59.6
At or above 3940'



HOLDING OVER CR NDB

MHA 3290

FT/METER CONVERSION	
QNH	
10010'	- 3050m
9030'	- 2750m
3940'	- 1200m
3290'	- 1000m



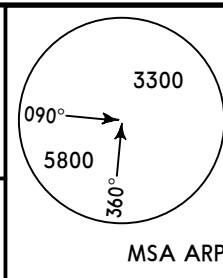
STAR	ROUTING
BUKOV 9D	On 360° track to CR NDB, then according to approach chart.
LOPNU 6H	On 204° track to CR NDB, then according to approach chart.
POBED 4D	On 138° track to CR NDB, then according to approach chart.
RIMOS 9D	On 174° track to CR NDB, then according to approach chart.
TUMBI 6D	On 232° track to CR NDB, then according to approach chart.

UKLN/CWC CHERNIVTSI INTL

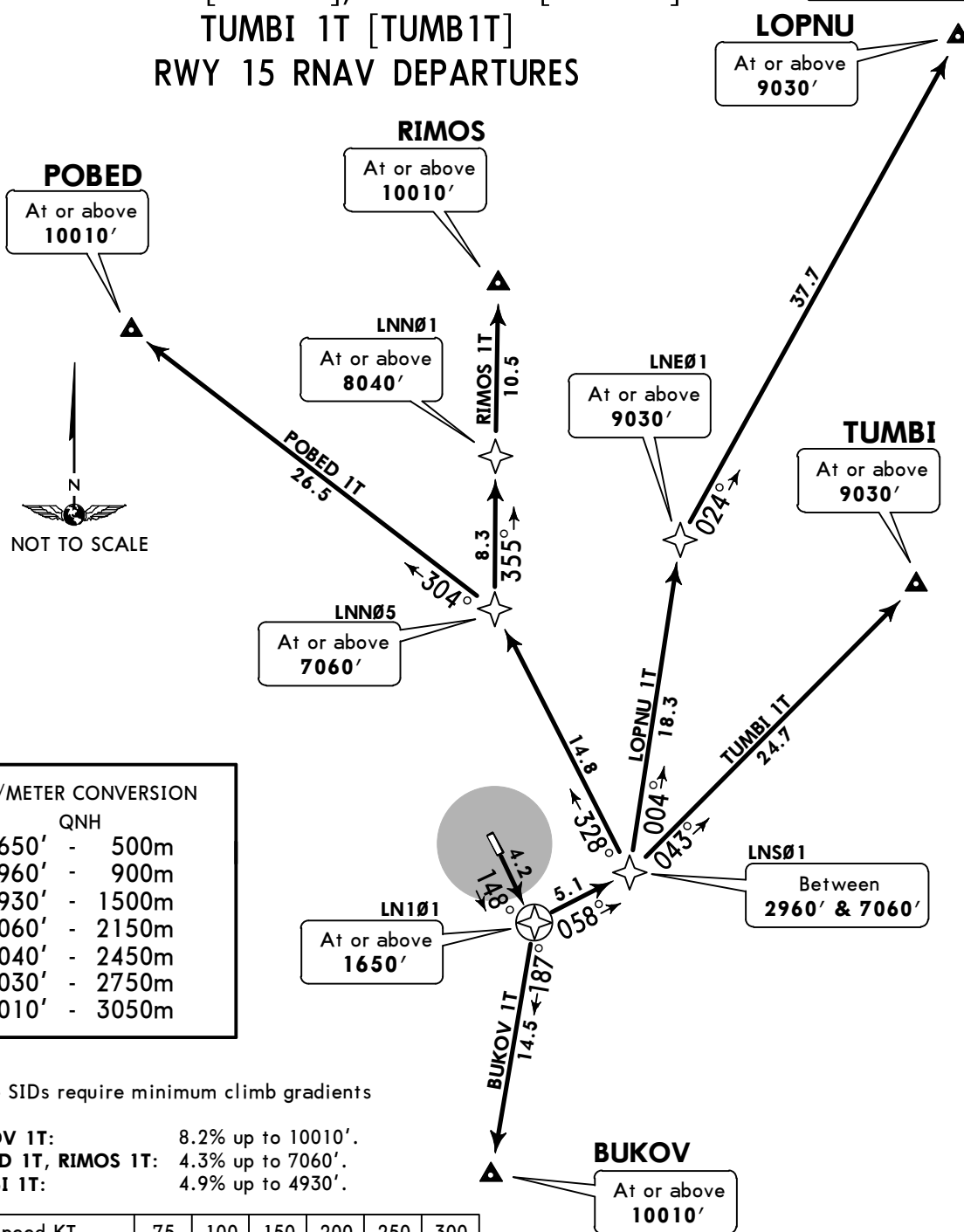
2 NOV 18 **10-3** Eff 8 Nov

CHERNIVTSI, UKRAINE
RNAV SID

Apt Elev 827'
Trans level: By ATC Trans alt: 10010'
1. RNAV 1 (GNSS).
2. GNSS required.
3. RNAV 1 (P-RNAV) approval required otherwise advise ATC.
4. If unable to comply advise ATC.
5. Expect close-in obstacles.



BUKOV 1T [BUKO1T], LOPNU 1T [LOPN1T] POBED 1T [POBE1T], RIMOS 1T [RIMO1T] TUMBI 1T [TUMBI1T] RWY 15 RNAV DEPARTURES



FT/METER CONVERSION

QNH	
1650'	- 500m
2960'	- 900m
4930'	- 1500m
7060'	- 2150m
8040'	- 2450m
9030'	- 2750m
10010'	- 3050m

These SIDs require minimum climb gradients of

BUKOV 1T: 8.2% up to 10010'.
POBED 1T, RIMOS 1T: 4.3% up to 7060'.
TUMBI 1T: 4.9% up to 4930'.

Gnd speed-KT	75	100	150	200	250	300
4.3% V/V (fpm)	327	435	653	871	1089	1306
4.9% V/V (fpm)	372	496	744	992	1241	1489
8.2% V/V (fpm)	623	830	1246	1661	2076	2491

SID	ROUTING
BUKOV 1T	LN101 (1650'+) - BUKOV (10010'+).
LOPNU 1T	LN101 (1650'+) - LNS01 (2960'+; 7060'-) - LNE01 (9030'+) - LOPNU (9030'+).
POBED 1T	LN101 (1650'+) - LNS01 (2960'+; 7060'-) - LNN05 (7060'+) - POBED (10010'+).
RIMOS 1T	LN101 (1650'+) - LNS01 (2960'+; 7060'-) - LNN05 (7060'+) - LNN01 (8040'+) - RIMOS (10010'+).
TUMBI 1T	LN101 (1650'+) - LNS01 (2960'+; 7060'-) - TUMBI (9030'+).

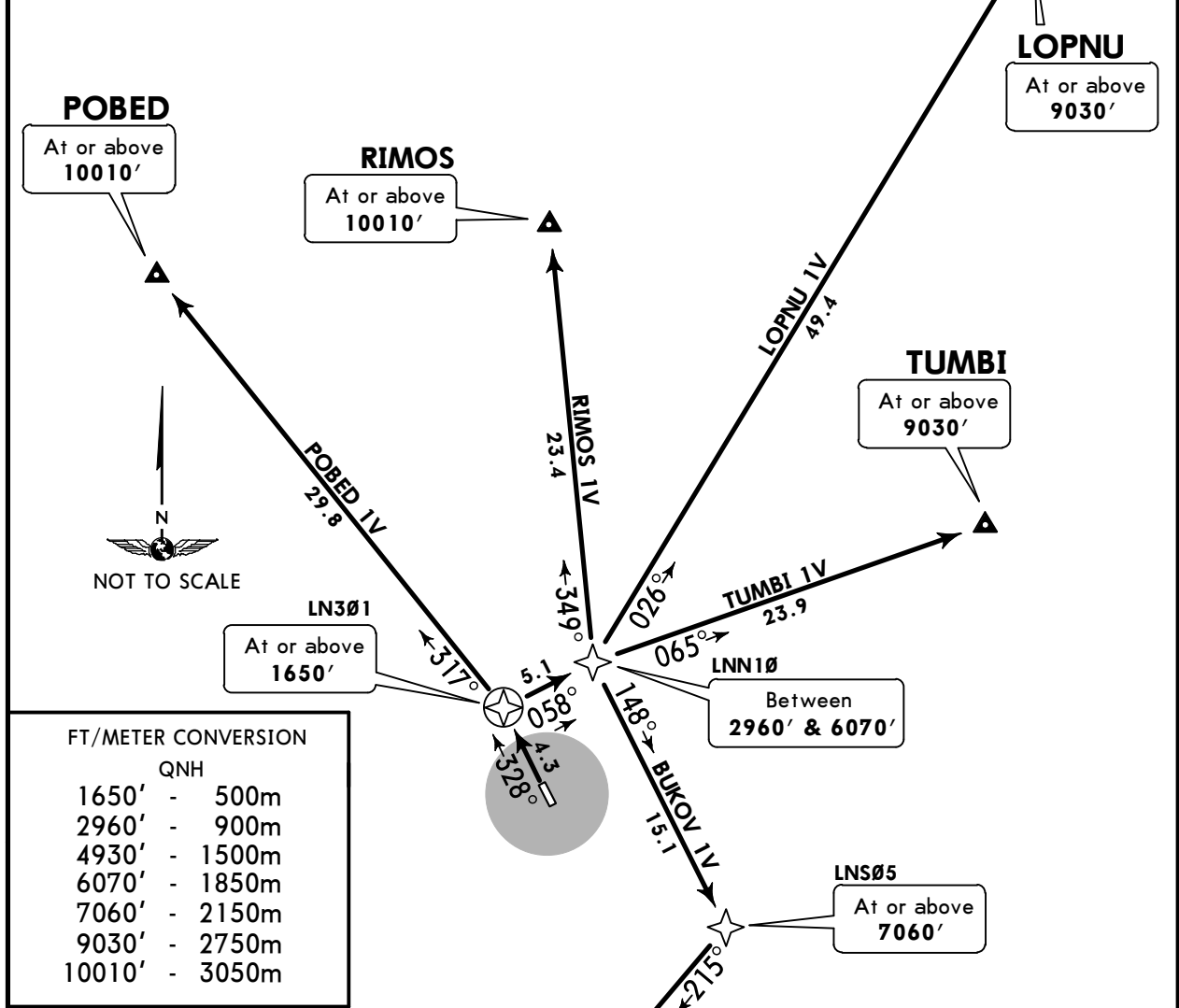
UKLN/CWC CHERNIVTSI INTL

2 NOV 18 **10-3A** Eff 8 Nov

CHERNIVTSI, UKRAINE
RNAV SID

Apt Elev 827'	Trans level: By ATC Trans alt: 10010' 1. RNAV 1 (GNSS). 2. GNSS required. 3. RNAV 1 (P-RNAV) approval required otherwise advise ATC. 4. If unable to comply advise ATC. 5. Expect close-in obstacles.	<p>MSA ARP</p>
-------------------------	--	----------------

BUKOV 1V [BUK01V], LOPNU 1V [LOPN1V] POBED 1V [POBE1V], RIMOS 1V [RIMO1V] TUMBI 1V [TUMB1V] RWY 33 RNAV DEPARTURES



FT/METER CONVERSION	
QNH	
1650'	- 500m
2960'	- 900m
4930'	- 1500m
6070'	- 1850m
7060'	- 2150m
9030'	- 2750m
10010'	- 3050m

These SIDs require minimum climb gradients of

BUKOV 1V:	4.2% up to 7060'.
LOPNU 1V, TUMBI 1V:	4.9% up to 4930'.
POBED 1V:	5.7% up to 4930'.
RIMOS 1V:	3.9% up to 4930'.

Gnd speed-KT	75	100	150	200	250	300
3.9% V/V (fpm)	296	395	592	790	987	1185
4.2% V/V (fpm)	319	425	638	851	1063	1276
4.9% V/V (fpm)	372	496	744	992	1241	1489
5.7% V/V (fpm)	433	577	866	1154	1443	1732

SID	ROUTING
BUKOV 1V	LN301 (1650'+) - LNN10 (2960'+; 6070'-) - LNS05 (7060'+) - BUKOV (10010'+).
LOPNU 1V	LN301 (1650'+) - LNN10 (2960'+; 6070'-) - LOPNU (9030'+).
POBED 1V	LN301 (1650'+) - POBED (10010'+).
RIMOS 1V	LN301 (1650'+) - LNN10 (2960'+; 6070'-) - RIMOS (10010'+).
TUMBI 1V	LN301 (1650'+) - LNN10 (2960'+; 6070'-) - TUMBI (9030'+).

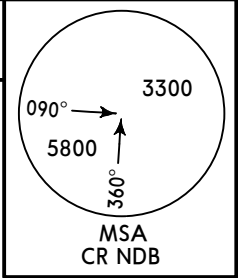
UKLN/CWC
CHERNIVTSI INTL

JEPPESEN
2 NOV 18 **10-3B** Eff 8 Nov

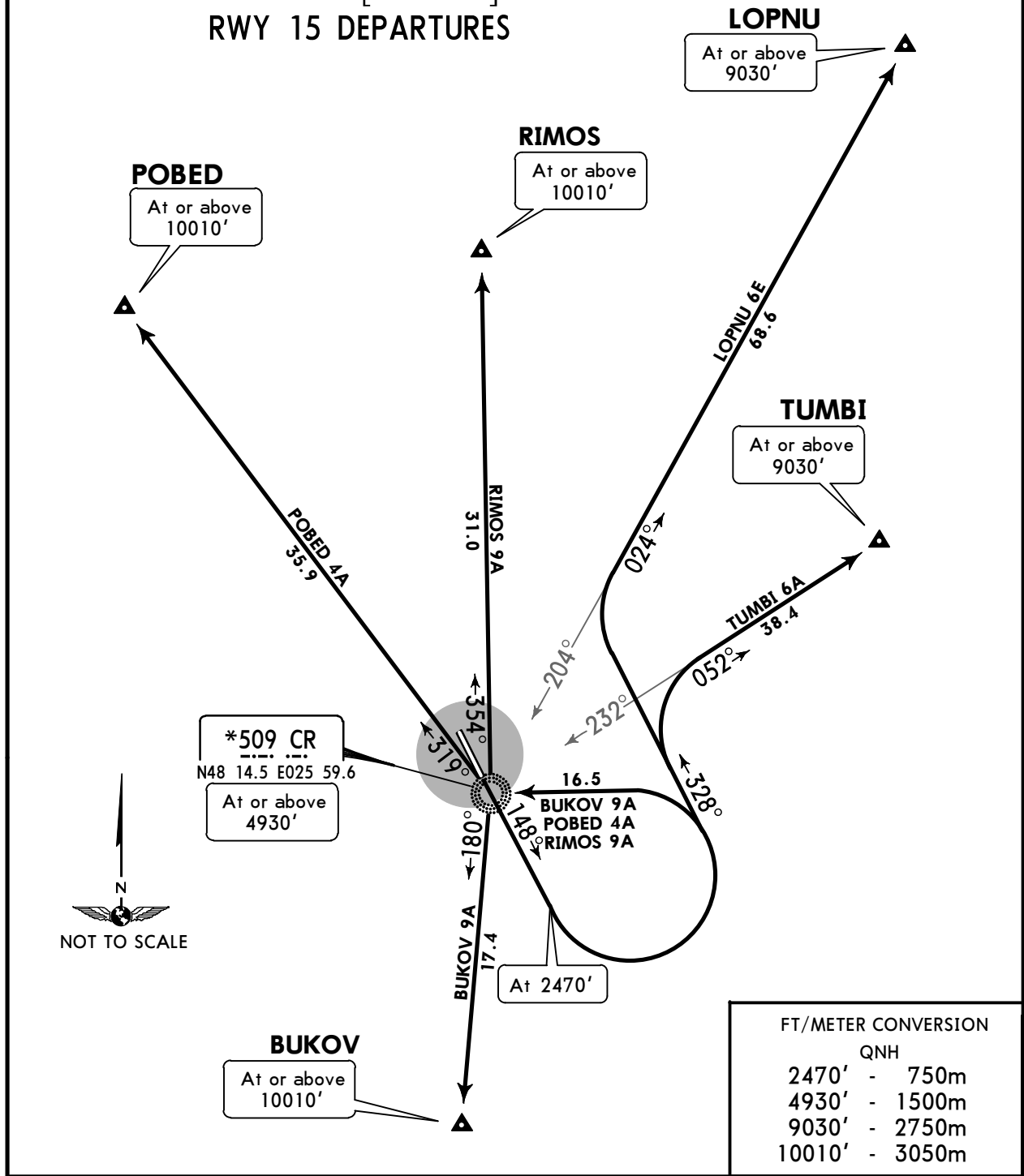
CHERNIVTSI, UKRAINE

SID

Apt Elev 827' Trans level: By ATC Trans alt: 10010'
Expect close-in obstacles.



BUKOV 9A [BUK09A]
LOPNU 6E [LOPN6E]
POBED 4A [POBE4A]
RIMOS 9A [RIMO9A]
TUMBI 6A [TUMB6A]
RWY 15 DEPARTURES



FT/METER CONVERSION

FT	METER
2470'	750m
4930'	1500m
9030'	2750m
10010'	3050m

SID	ROUTING
BUKOV 9A	Climb on 148° track to 2470', turn LEFT to CR NDB, turn LEFT on 180° track to BUKOV.
LOPNU 6E	Climb on 148° track to 2470', turn LEFT, 328° track, turn RIGHT, intercept 204° bearing from CR NDB to LOPNU.
POBED 4A	Climb on 148° track to 2470', turn LEFT to CR NDB, turn RIGHT on 319° track to POBED.
RIMOS 9A	Climb on 148° track to 2470', turn LEFT to CR NDB, turn RIGHT on 354° track to RIMOS.
TUMBI 6A	Climb on 148° track to 2470', turn LEFT on 328° track, turn RIGHT, intercept 232° bearing from CR NDB to TUMBI.

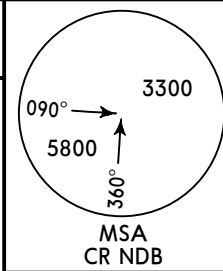
UKLN/CWC
CHERNIVTSI INTL

JEPPESEN
 2 NOV 18 **10-3C** **Eff 8 Nov**

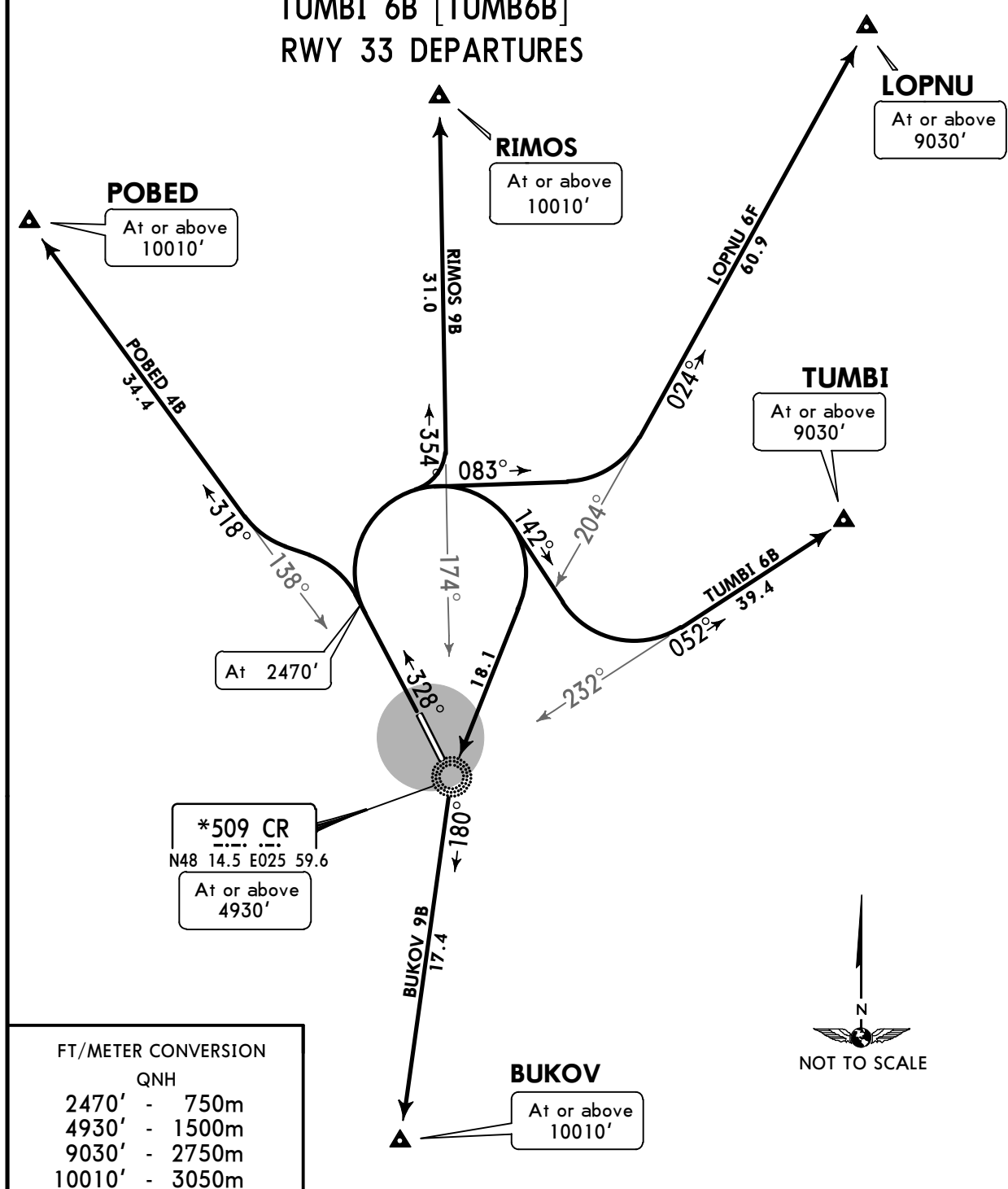
CHERNIVTSI, UKRAINE

SID

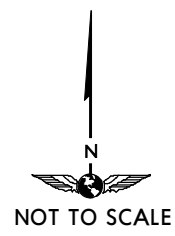
Apt Elev **827'** Trans level: By ATC Trans alt: 10010'
 Expect close-in obstacles.



BUKOV 9B [BUK09B]
LOPNU 6F [LOPN6F]
POBED 4B [POBE4B]
RIMOS 9B [RIMO9B]
TUMBI 6B [TUMB6B]
RWY 33 DEPARTURES



FT/METER CONVERSION	
QNH	
2470'	- 750m
4930'	- 1500m
9030'	- 2750m
10010'	- 3050m



SID	ROUTING
BUKOV 9B	Climb on 328° track to 2470', turn RIGHT to CR NDB, turn LEFT on 180° track to BUKOV.
LOPNU 6F	Climb on 328° track to 2470', turn RIGHT, 083° track, turn LEFT, intercept 204° bearing from CR NDB to LOPNU.
POBED 4B	Climb on 328° track to 2470', turn LEFT, intercept 138° bearing from CR NDB to POBED.
RIMOS 9B	Climb on 328° track to 2470', turn RIGHT, intercept 174° bearing from CR NDB to RIMOS.
TUMBI 6B	Climb on 328° track to 2470', turn RIGHT, 142° track, turn LEFT, intercept 232° bearing from CR NDB to TUMBI.

UKLN/CWC

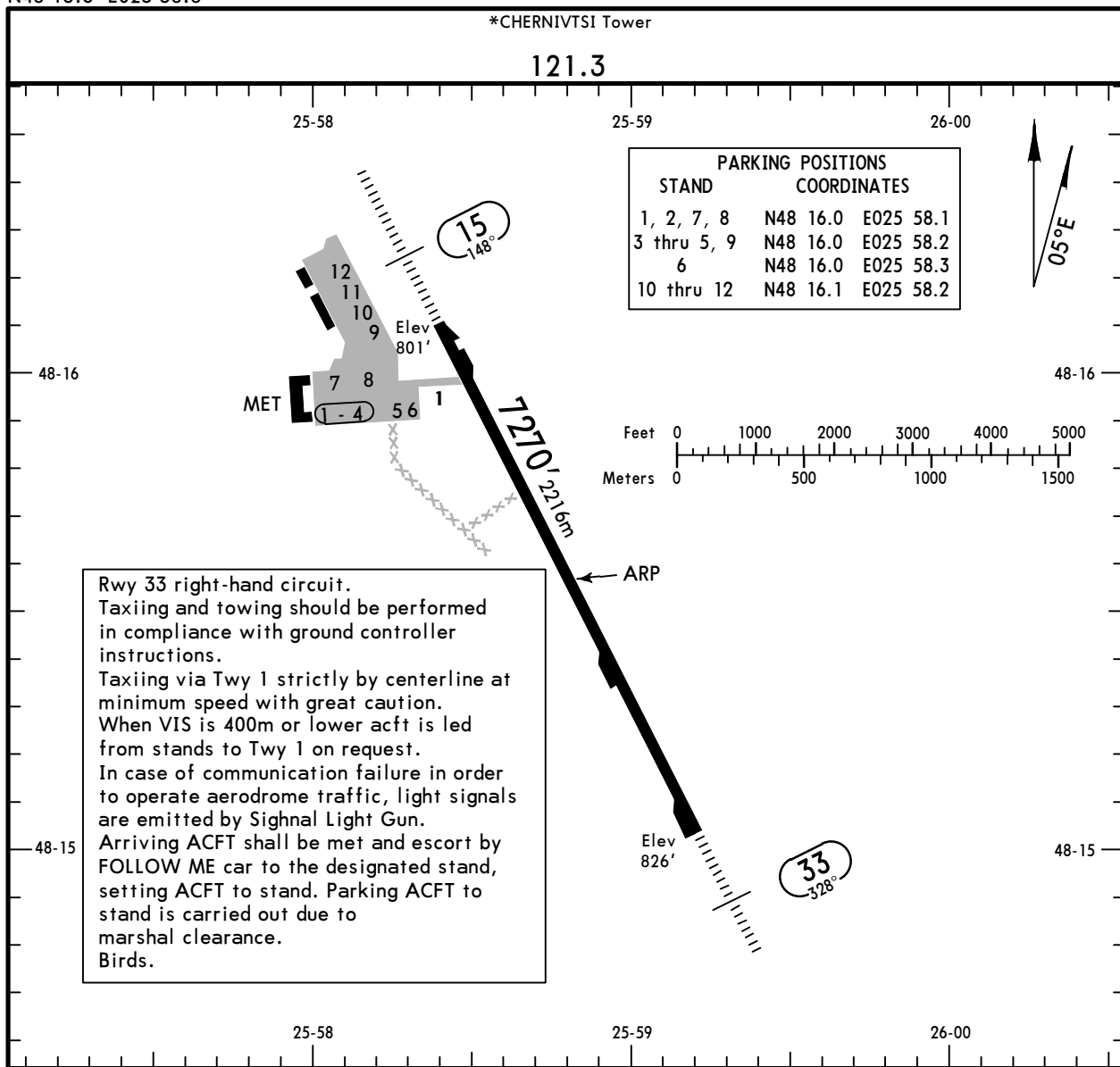
Apt Elev **827'**
N48 15.6 E025 58.8

JEPPESEN

14 JUN 19 **(10-9) Eff 20 Jun**

CHERNIVTSI, UKRAINE

CHERNIVTSI INTL



ADDITIONAL RUNWAY INFORMATION					
RWY	USABLE LENGTHS	LANDING BEYOND		TAKE-OFF	WIDTH
		Threshold	Glide Slope		
15 33	HIRL (60m) HIALS PAPI-L (angle 3.0°)		6116' 1864m 6237' 1901m		138' 42m

Standard	TAKE-OFF
Low Visibility Take-off	
Day: RL & RCLM Night: RL	Day: RL or RCLM Night: RL
	Adequate vis ref (Day only)

RVR 300m	400m	500m
A		
B		
C		
D		

UKLN/CWC
CHERNIVTSI INTL

JEPPESEN
2 NOV 18 **(11-1) Eff 8 Nov**

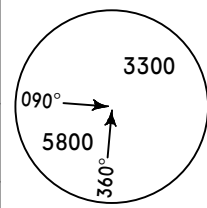
CHERNIVTSI, UKRAINE
ILS Rwy 15

*CHERNIVTSI Tower

121.3

BRIEFING STRIP™

LOC ICN *109.5	Final Apch Crs 148°	GS OM 1509' (708')	ILS DA(H) Refer to Minimums	Apt Elev 827' Rwy 801'
-----------------------------	----------------------------------	---------------------------------	--------------------------------------	---------------------------



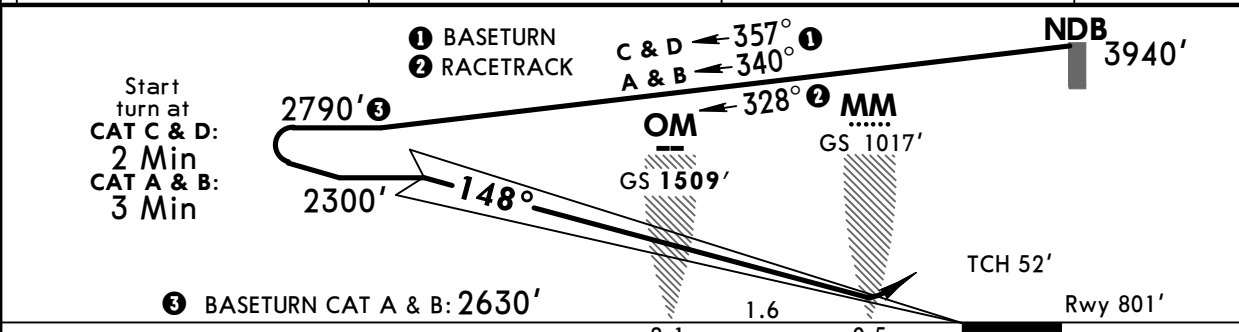
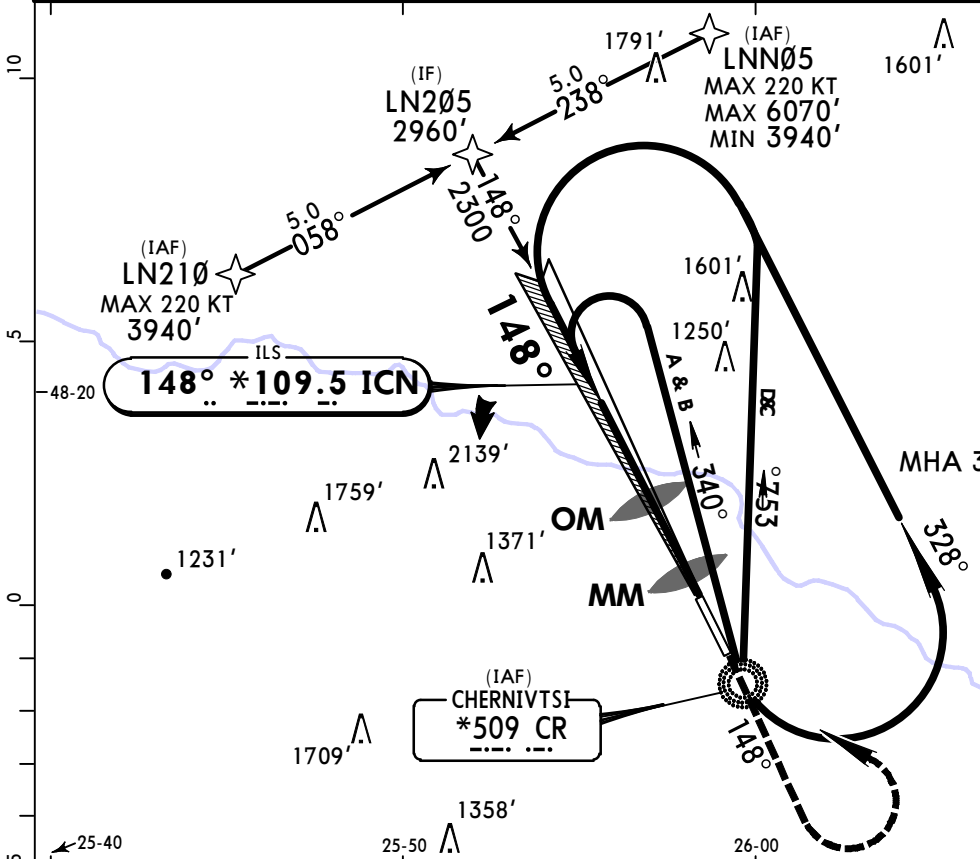
MISSED APCH: Climb on 148° to 1970', then turn LEFT to NDB climbing to 3940', then according to chart.

Alt Set: hPa Rwy Elev: 29 hPa Trans level: By ATC Trans alt: 10010'

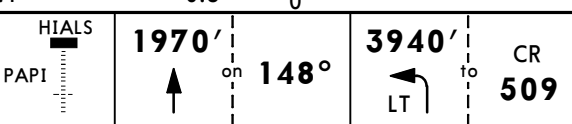
1. RNAV 1 (P-RNAV) required after LN210 and LNN05 for Transition to FAP.
2. ACFT not equipped for RNAV 1 (P-RNAV) use conventional procedures through CR NDB

FT/METER CONVERSION
QNH

10010'	-	3050m
6070'	-	1850m
3940'	-	1200m
3290'	-	1000m
2960'	-	900m
2790'	-	850m
2630'	-	800m
2300'	-	700m
1970'	-	600m



Gnd speed-Kts	70	90	100	120	140	160	
GS	3.00°	372	478	531	637	743	849



Standard STRAIGHT-IN LANDING RWY 15 ILS

DA(H)	A: 1001' (200')	C: 1014' (213')
	B: 1004' (203')	D: 1024' (223')
	FULL	ALS out

LOC (GS out)

Max Kts.	MDA(H)	VIS
100	1360' (533')	1500m
135	1360' (533')	1600m
180	1770' (943')	2400m
205	1880' (1053')	3600m

CIRCLE-TO-LAND
Prohibited West of apt between 180° and 317° from ARP

PANS OPS

A	RVR 750m	RVR 1200m	NOT AUTHORIZED
B	RVR 800m		
C			
D			

UKLN/CWC CHERNIVTSI INTL

JEPPESSEN
2 NOV 18 **(11-2)** Eff 8 Nov

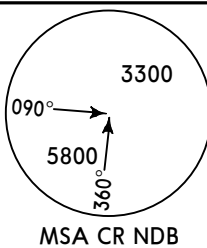
CHERNIVTSI, UKRAINE ILS Rwy 33

*CHERNIVTSI Tower

121.3

BRIEFING STRIP™

LOC ICR *110.3	Final Apch Crs 328°	GS OM 1690' (864')	ILS DA(H) Refer to Minimums	Apt Elev 827' Rwy 826'
-----------------------------	----------------------------------	---------------------------------	--------------------------------------	---------------------------



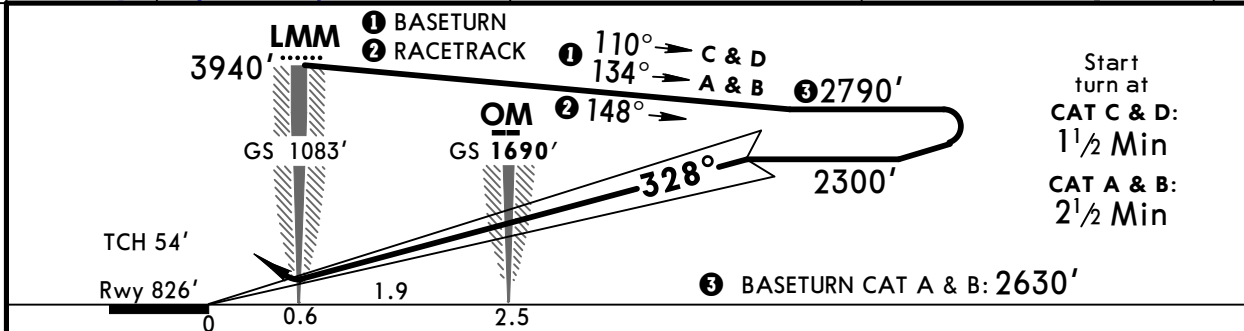
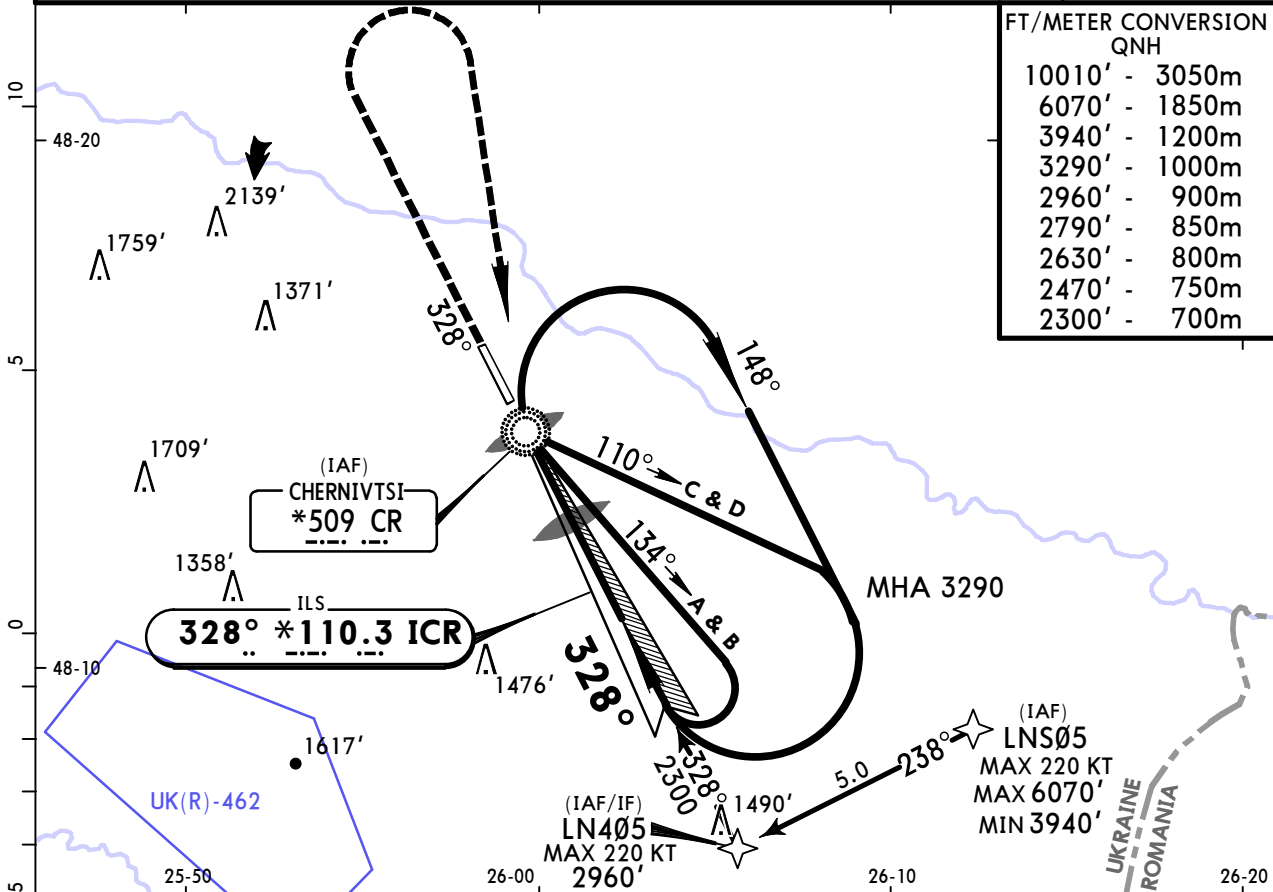
MISSED APCH: Climb on 328° to 2470', then turn RIGHT to NDB climbing to 3940', then according to chart.

Alt Set: hPa Rwy Elev: 30 hPa Trans level: By ATC Trans alt: 10010'

- RNAV 1 (P-RNAV) required after LN405 and LNS05 for Transition to FAP.
- ACFT not equipped for RNAV 1 (P-RNAV) use conventional procedures through CR NDB

FT/METER CONVERSION
QNH

10010'	-	3050m
6070'	-	1850m
3940'	-	1200m
3290'	-	1000m
2960'	-	900m
2790'	-	850m
2630'	-	800m
2470'	-	750m
2300'	-	700m



Gnd speed-Kts	70	90	100	120	140	160	HIALS PAPI	2470'	on 328°	3940'	to CR 509
GS	3.00°	372	478	531	637	849					

PANS OPS	Standard STRAIGHT-IN LANDING RWY 33		LOC (GS out)	CIRCLE-TO-LAND	
	ILS			Prohibited West of apt between 180° and 317° from ARP	
	DA(H)				
	FULL		ALS out		Max Kts
A	RVR 750m	A: 1029'(203')	C: 1049'(223')		100
B		B: 1039'(213')	D: 1059'(233')		135
C	RVR 800m			NOT AUTHORIZED	180
D					205
					MDA(H)
					1360' (533')
					1770' (943')
					1880' (1053')
					VIS
					1500m
					1600m
					2400m
					3600m

UKLN/CWC
CHERNIVTSI INTL

JEPPESEN
2 NOV 18 **(16-1)** Eff 8 Nov

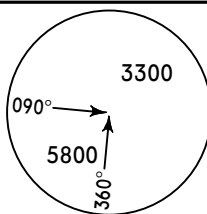
CHERNIVTSI, UKRAINE
NDB Rwy 15

*CHERNIVTSI Tower

121.3

BRIEFING STRIP™

NDB CR *509	Final Apch Crs 148°	Procedure Alt No FAF	DA/MDA(H) (CONDITIONAL) 1320' (519')	Apt Elev 827' Rwy 801'
-----------------------	-------------------------------	-------------------------	---	---------------------------



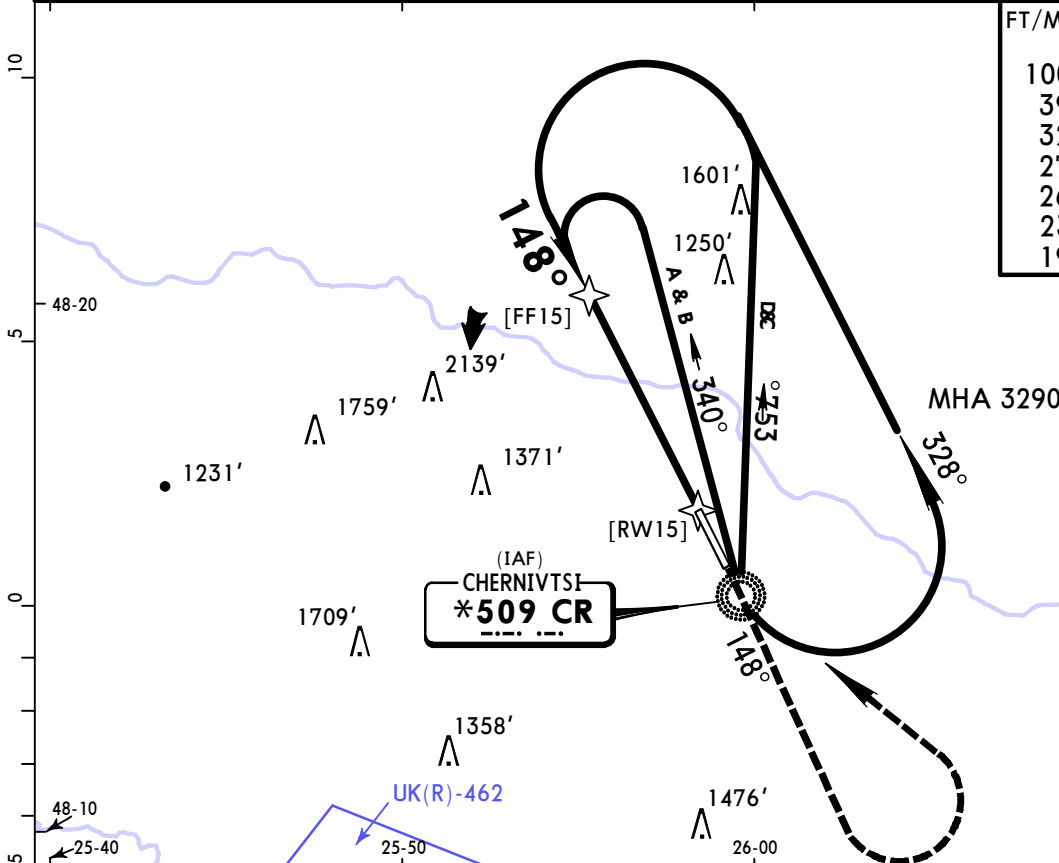
MISSED APCH: Climb on 148° to 1970', then turn LEFT to NDB climbing to 3940', then according to chart.

Alt Set: hPa Rwy Elev: 29 hPa Trans level: By ATC Trans alt: 10010'

MSA CR NDB

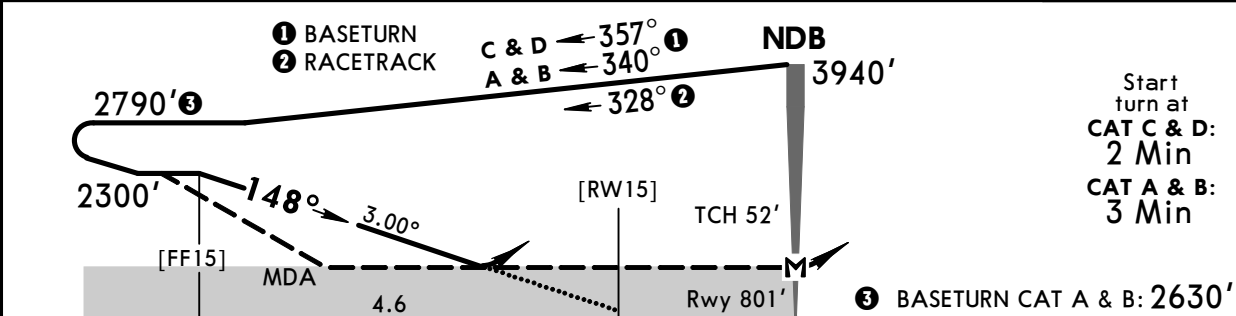
FT/METER CONVERSION
QNH

10010'	-	3050m
3940'	-	1200m
3290'	-	1000m
2790'	-	850m
2630'	-	800m
2300'	-	700m
1970'	-	600m

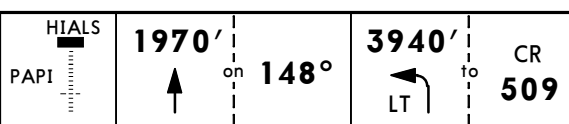


RECOMMENDED ALTITUDES

DIST to RW15	ALTITUDE
4.0	2110'
3.0	1800'
2.0	1480'



Gnd speed-Kts	70	90	100	120	140	160
Descent Angle	3.00°	372	478	531	637	743
MAP at NDB						



Standard STRAIGHT-IN LANDING RWY 15

	CDFA with FF15		non-CDFA w/o FF15	
	DA/MDA(H)	ALS out	MDA(H)	ALS out
A	1320' (519')		1320' (519')	
B		RVR 1500m		RVR 2100m
C		RVR 1900m		RVR 2300m
D		RVR 2400m		RVR 2800m

CIRCLE-TO-LAND Prohibited West of apt between 180° and 317° from ARP

Max Kts	MDA(H)	VIS
100	1360' (533')	1500m
135	1360' (533')	1600m
180	1770' (943')	2400m
205	1880' (1053')	3600m

PANS OPS

1 or higher straight-in minimums.

UKLN/CWC
CHERNIVTSI INTL

JEPPESEN
2 NOV 18 **(16-2)** Eff 8 Nov

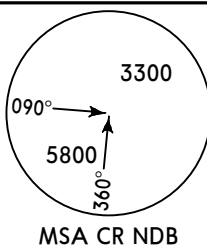
CHERNIVTSI, UKRAINE
NDB Rwy 33

*CHERNIVTSI Tower

121.3

BRIEFING STRIP™

NDB CR *509	Final Apch Crs 328°	Procedure Alt No FAF	DA/MDA(H) (CONDITIONAL) 1790' (964')	Apt Elev 827' Rwy 826'
-----------------------	-------------------------------	-------------------------	---	---------------------------

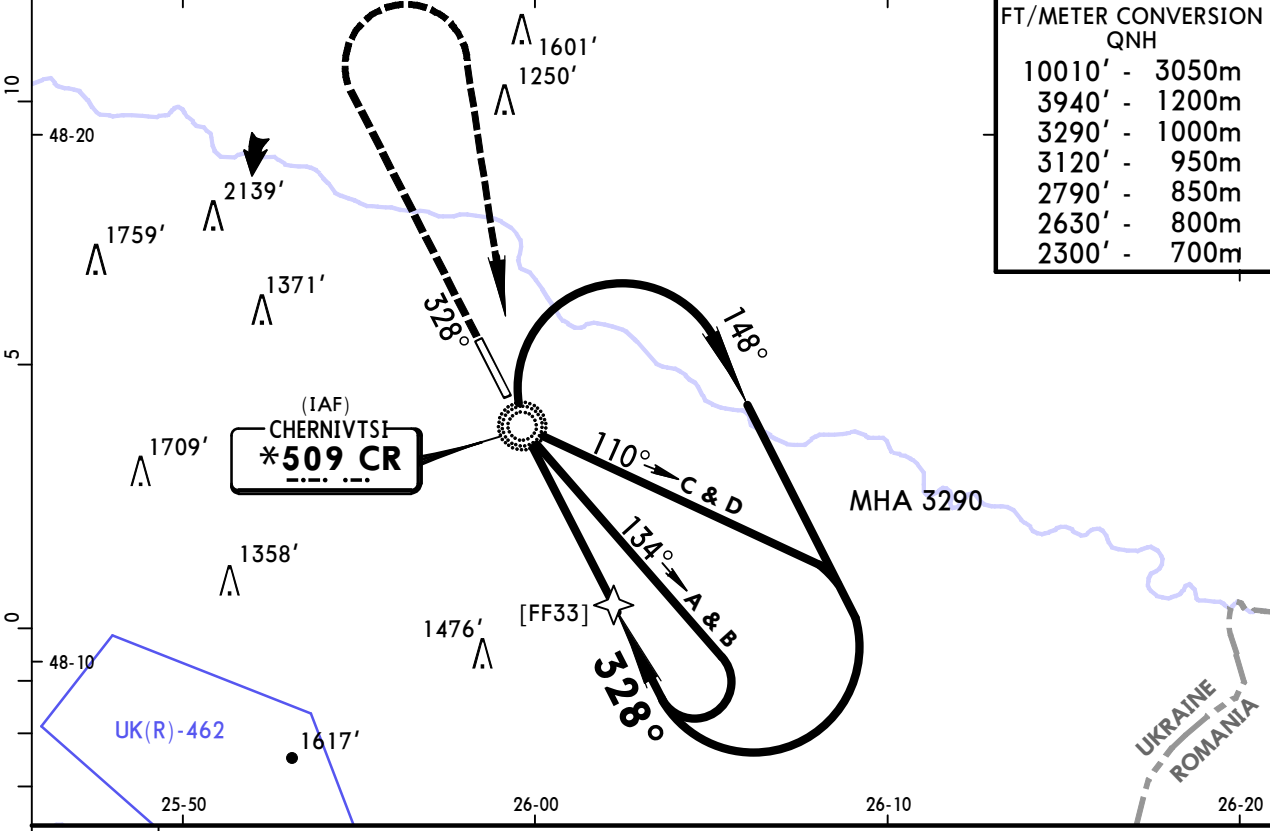


MISSED APCH: Climb on 328° to 3120', then turn RIGHT to NDB climbing to 3940', then according to chart.

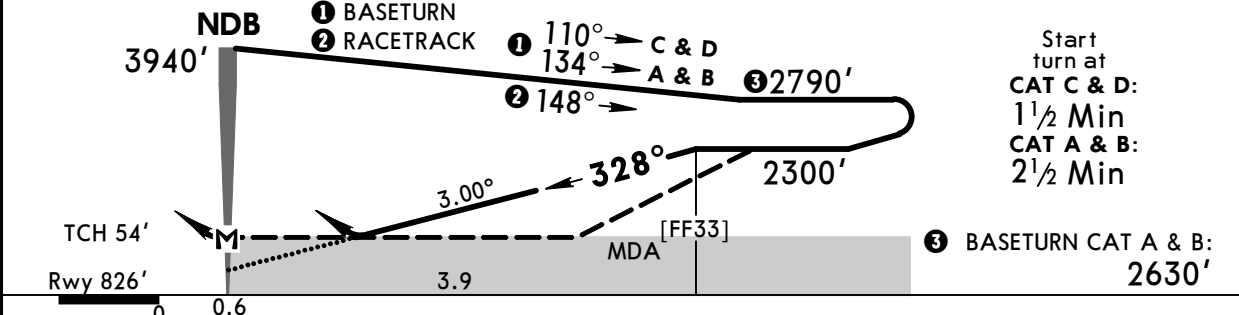
Alt Set: hPa Rwy Elev: 30 hPa Trans level: By ATC Trans alt: 10010'

FT/METER CONVERSION
QNH

10010'	-	3050m
3940'	-	1200m
3290'	-	1000m
3120'	-	950m
2790'	-	850m
2630'	-	800m
2300'	-	700m



DIST to NDB	3.0
ALTITUDE	2020'



Start turn at
CAT C & D:
1½ Min
CAT A & B:
2½ Min

3 BASETURN CAT A & B:
2630'

Gnd speed-Kts	70	90	100	120	140	160	HIALS PAPI	3120'	on 328°	3940'	to CR 509
Descent Angle	3.00°	372	478	531	637	849					

PANS OPS	Standard				STRAIGHT-IN LANDING RWY 33		CIRCLE-TO-LAND Prohibited West of apt between 180° and 317° from ARP	
	CDFA with FF33 DA/MDA(H) 1790' (964')		non-CDFA w/o FF33 MDA(H) 1790' (964')		Max Kts		MDA(H) VIS	
	ALS out		ALS out		100	1810'	(983')	1500m
	A	RVR 1500m	RVR 4300m	RVR 4700m	135	1810'	(983')	1600m
	B	RVR 1500m	RVR 4300m	RVR 4700m	180	1810'	(983')	2400m
C	RVR 2400m	RVR 4500m	RVR 4900m	205	1880'	(1053')	3600m	
D	RVR 2400m	RVR 4500m	RVR 4900m					

1 or higher straight-in minimums.

Chart changes since cycle 01-2021

ADD = added chart, REV = revised chart, DEL = deleted chart.

ACT	PROCEDURE IDENT	INDEX	REV DATE	EFF DATE
-----	-----------------	-------	----------	----------

CHERNIVTSI, (CHERNIVTSI INTL - UKLN)

TERMINAL CHART CHANGE NOTICES

No Chart Change Notices for Airport UKLN