

List of pages in this Trip Kit

Trip Kit Index

Airport Information For UKLI

Terminal Charts For UKLI

Revision Letter For Cycle 02-2021

Change Notices

Notebook

General Information

Location: IVANO-FRANKIVSK UKR
ICAO/IATA: UKLI / IFO
Lat/Long: N48° 53.03', E024° 41.07'
Elevation: 919 ft

Airport Use: Public
Daylight Savings: Observed
UTC Conversion: -2:00 = UTC
Magnetic Variation: 6.0° E

Fuel Types: Jet A-1
Customs: Yes
Airport Type: IFR
Landing Fee: Yes
Control Tower: Yes
Jet Start Unit: No
LLWS Alert: No
Beacon: No

Sunrise: 0606 Z
Sunset: 1458 Z

Runway Information

Runway: 10
Length x Width: 8202 ft x 144 ft
Surface Type: concrete
TDZ-Elev: 919 ft
Lighting: Edge, ALS

Runway: 28
Length x Width: 8202 ft x 144 ft
Surface Type: concrete
TDZ-Elev: 904 ft
Lighting: Edge, ALS

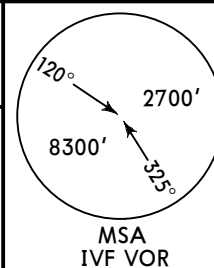
Communication Information

Franko Tower: 134.850
Franko Tower: 124.000
Franko Approach: 132.300

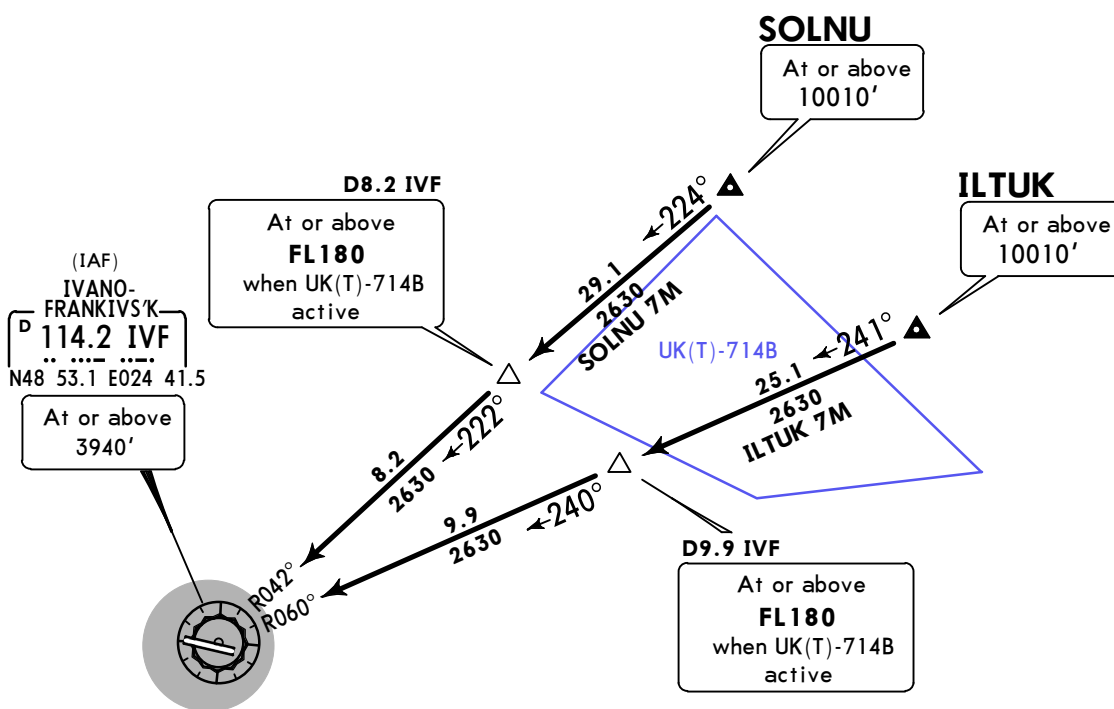
UKLI/IFO
IVANO-FRANKIVS'K

Apt Elev
919'

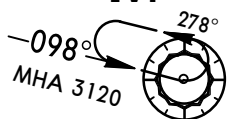
Alt Set: hPa (MM on request)
 Trans level: By ATC Trans alt: 10010'



ILTUK 7M [ILTU7M]
SOLNU 7M [SOLN7M]
RWY 10 ARRIVALS



HOLDING OVER IVF



FT/METER CONVERSION

QNH	
10010'	- 3050m
3940'	- 1200m
3120'	- 950m
2630'	- 800m

STAR

ROUTING

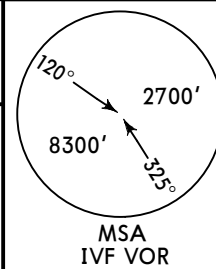
ILTUK 7M	On 241° track to D9.9 IVF, turn LEFT, 240° track to IVF, then according to approach chart.
SOLNU 7M	On 224° track to D8.2 IVF, turn LEFT, 222° track to IVF, then according to approach chart.

UKLI/IFO
IVANO-FRANKIVS'K

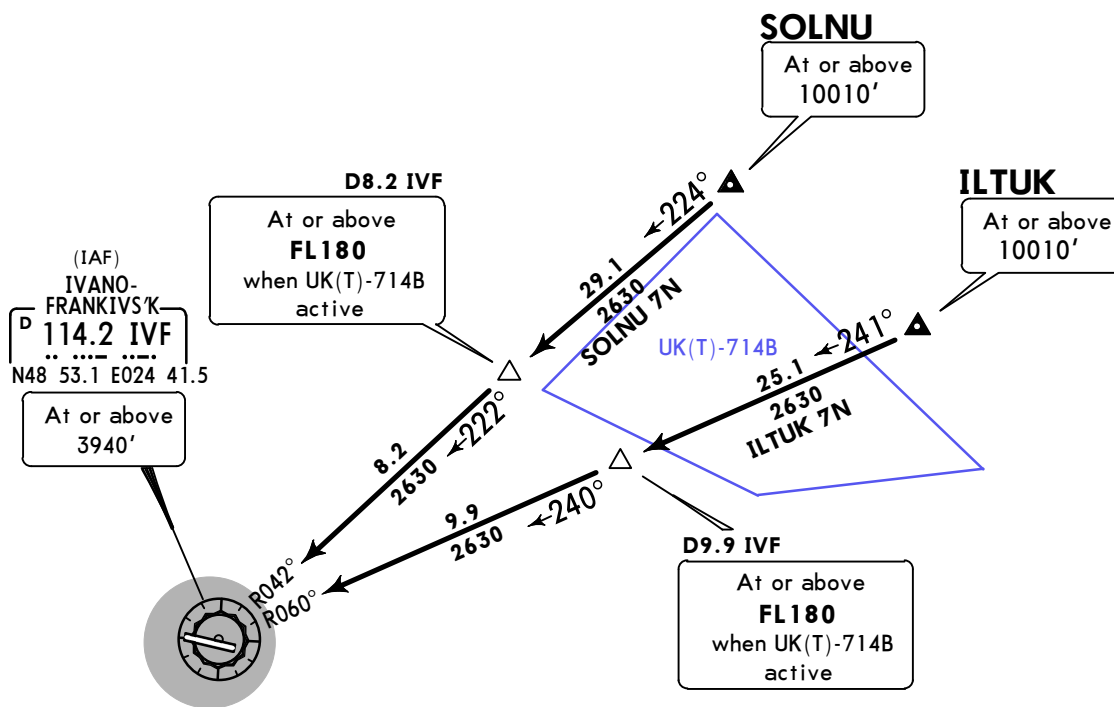
JEPPESEN **IVANO-FRANKIVS'K, UKRAINE**
 27 JAN 17 **(10-2A)** **Eff 2 Feb** **STAR**

Apt Elev
919'

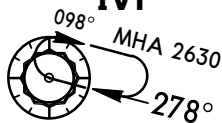
Alt Set: hPa (MM on request)
 Trans level: By ATC Trans alt: 10010'



ILTUK 7N [ILTU7N]
SOLNU 7N [SOLN7N]
RWY 28 ARRIVALS



HOLDING OVER IVF



FT/METER CONVERSION

QNH
 10010' - 3050m
 3940' - 1200m
 2630' - 800m

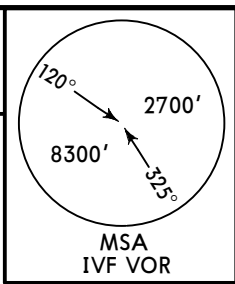


STAR	ROUTING
ILTUK 7N	On 241° track to D9.9 IVF, turn LEFT, 240° track to IVF, then according to approach chart.
SOLNU 7N	On 224° track to D8.2 IVF, turn LEFT, 222° track to IVF, then according to approach chart.

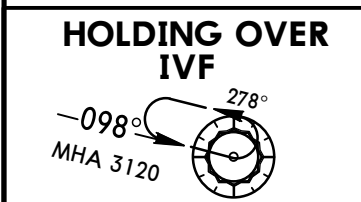
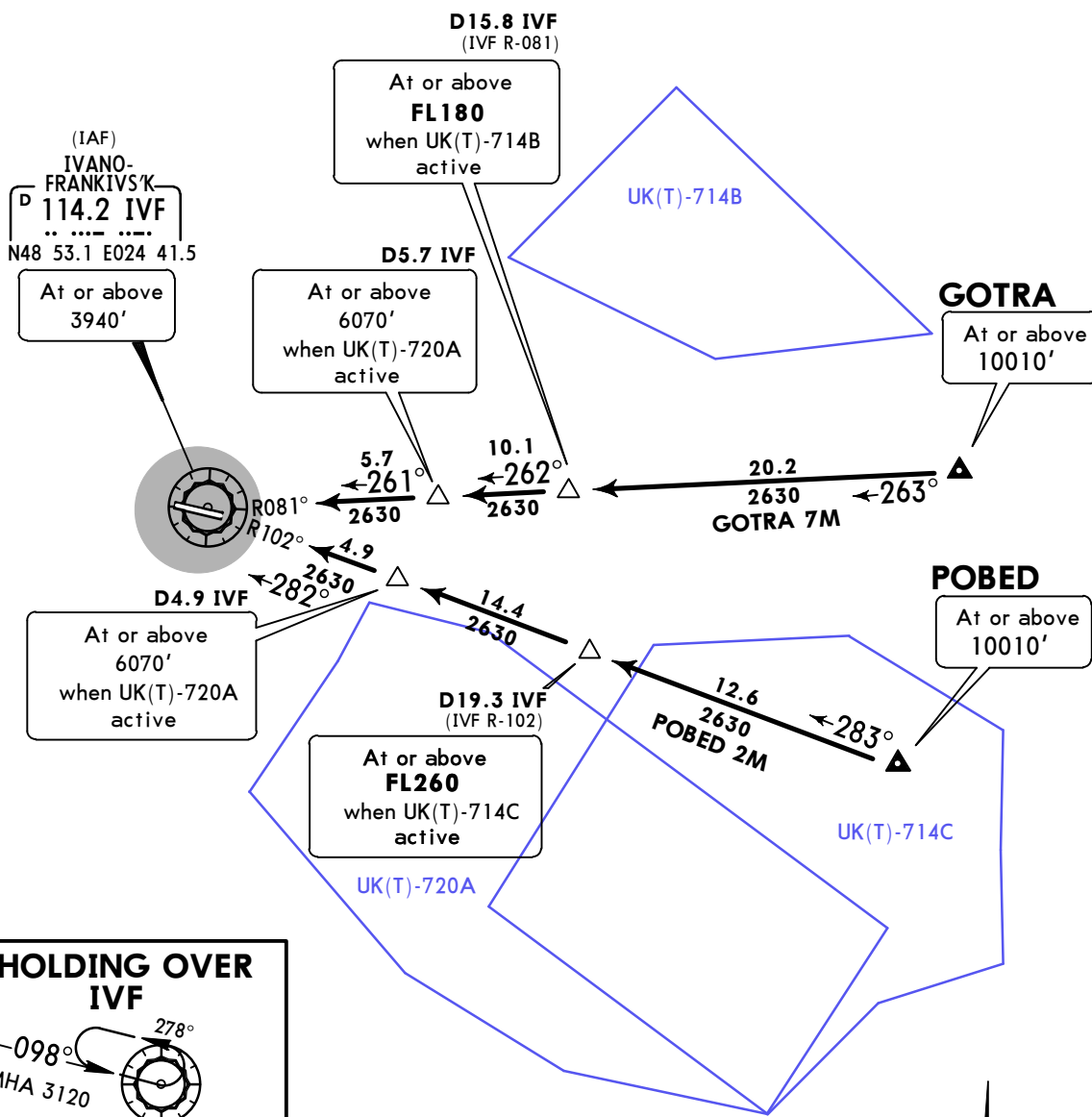
UKLI/IFO
IVANO-FRANKIVS'K

JEPPESEN **IVANO-FRANKIVS'K, UKRAINE**
 27 JAN 17 **(10-2B)** **Eff 2 Feb** **STAR**

Apt Elev **919'**
 Alt Set: hPa (MM on request)
 Trans level: By ATC Trans alt: 10010'



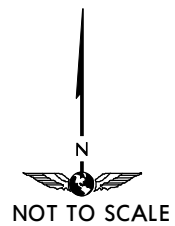
GOTRA 7M [GOTR7M]
POBED 2M [POBE2M]
RWY 10 ARRIVALS



FT/METER CONVERSION

QNH

10010'	-	3050m
6070'	-	1850m
3940'	-	1200m
3120'	-	950m
2630'	-	800m



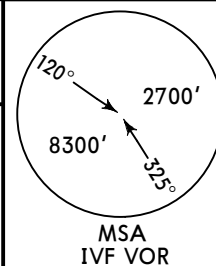
STAR	ROUTING
GOTRA 7M	On 263° track to D15.8 IVF, turn LEFT, 262° track to D5.7 IVF, turn LEFT, 261° track to IVF, then according to approach chart.
POBED 2M	On 283° track to D4.9 IVF, turn LEFT, 282° track to IVF, then according to approach chart.

UKLI/IFO
IVANO-FRANKIVS'K

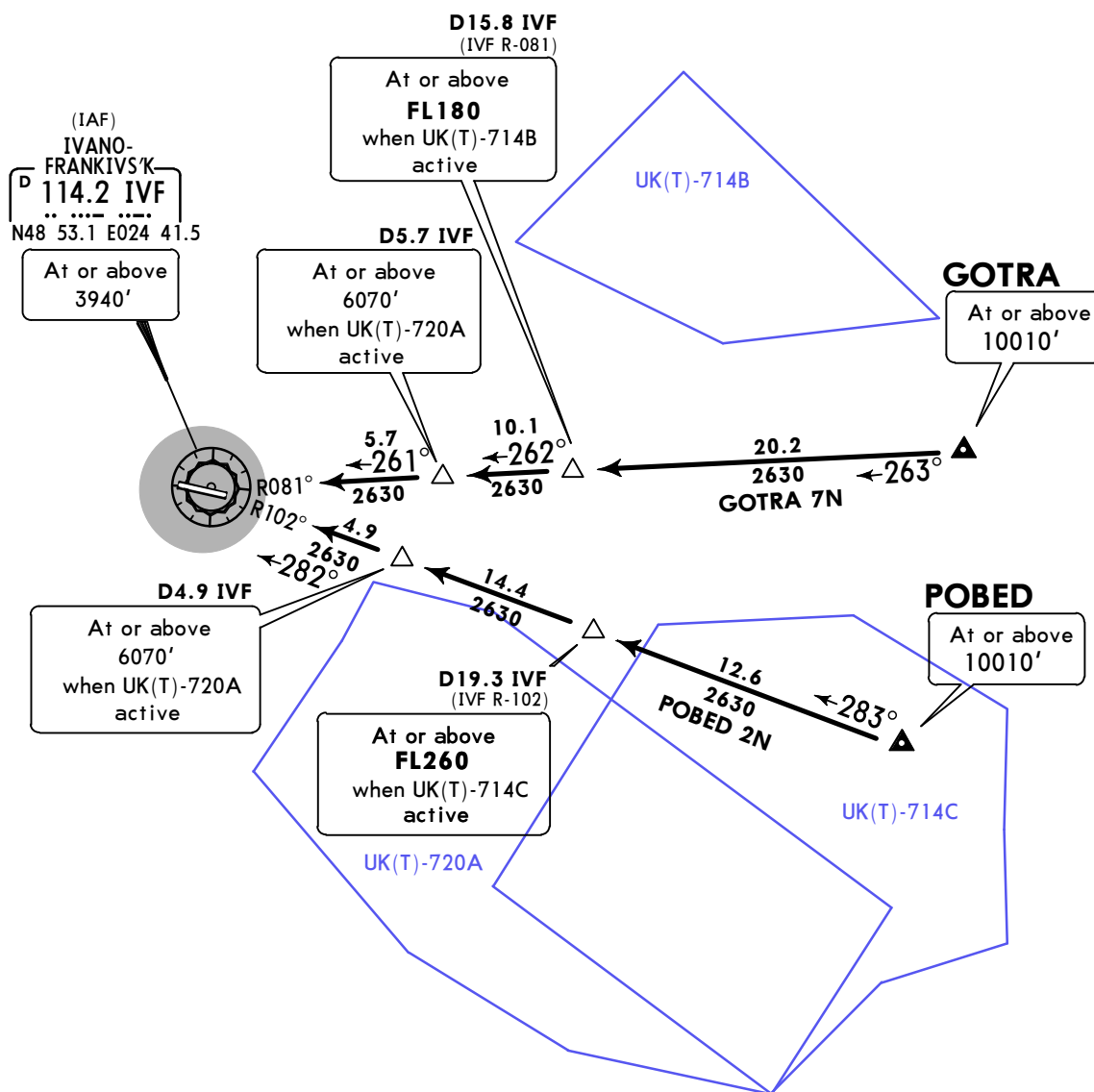
JEPPESEN **IVANO-FRANKIVS'K, UKRAINE**
 27 JAN 17 **10-2C** **Eff 2 Feb** **STAR**

Apt Elev
919'

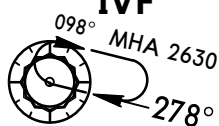
Alt Set: hPa (MM on request)
 Trans level: By ATC Trans alt: 10010'



GOTRA 7N [GOTR7N]
POBED 2N [POBE2N]
RWY 28 ARRIVALS



HOLDING OVER
IVF



FT/METER CONVERSION
 QNH

10010' - 3050m
 6070' - 1850m
 3940' - 1200m
 2630' - 800m



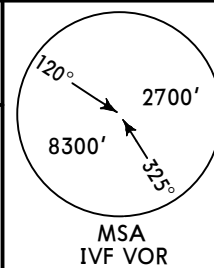
STAR	ROUTING
GOTRA 7N	On 263° track to D15.8 IVF, turn LEFT, 262° track to D5.7 IVF, turn LEFT, 261° track to IVF, then according to approach chart.
POBED 2N	On 283° track to D4.9 IVF, turn LEFT, 282° track to IVF, then according to approach chart.

UKLI/IFO
IVANO-FRANKIVS'K

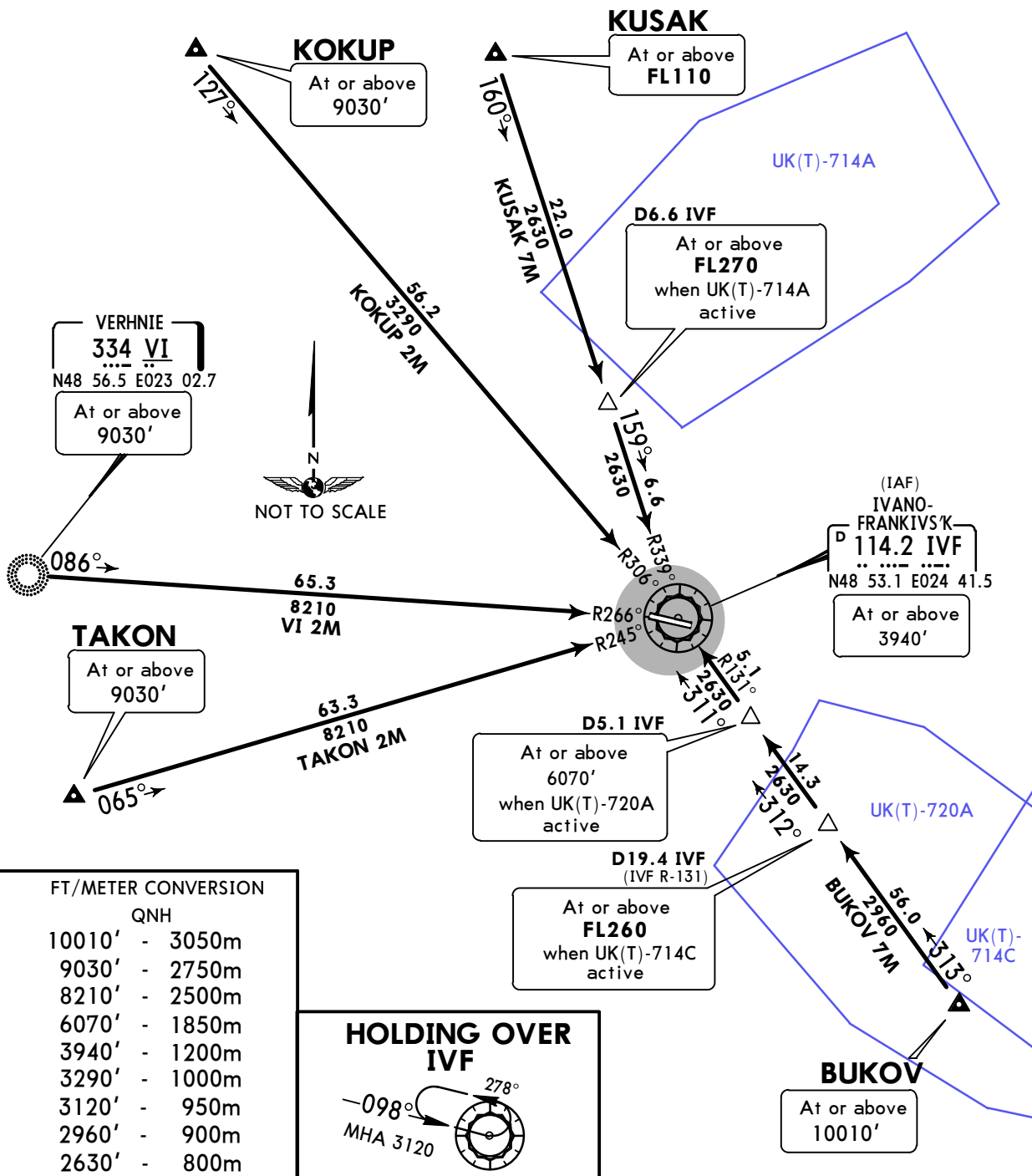
JEPPESEN **IVANO-FRANKIVS'K, UKRAINE**
27 JAN 17 **(10-2D)** **Eff 2 Feb** **STAR**

Apt Elev
919'

Alt Set: hPa (MM on request)
Trans level: By ATC Trans alt: 10010'



BUKOV 7M [BUK07M]
KOKUP 2M [KOKU2M]
KUSAK 7M [KUSA7M]
TAKON 2M [TAKO2M]
VERHNIE 2M (VI 2M) [VI2M]
RWY 10 ARRIVALS

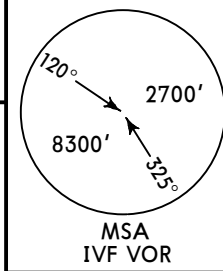


STAR	ROUTING
BUKOV 7M	On 313° track to D19.4 IVF, turn LEFT, 312° track to D5.1 IVF, turn LEFT, 311° track to IVF, then according to approach chart.
KOKUP 2M	On 127° track to IVF, then according to approach chart.
KUSAK 7M	On 160° track to D6.6 IVF, turn LEFT, 159° track to IVF, then according to approach chart.
TAKON 2M	On 065° track to IVF, then according to approach chart.
VI 2M	On 086° track to IVF, then according to approach chart.

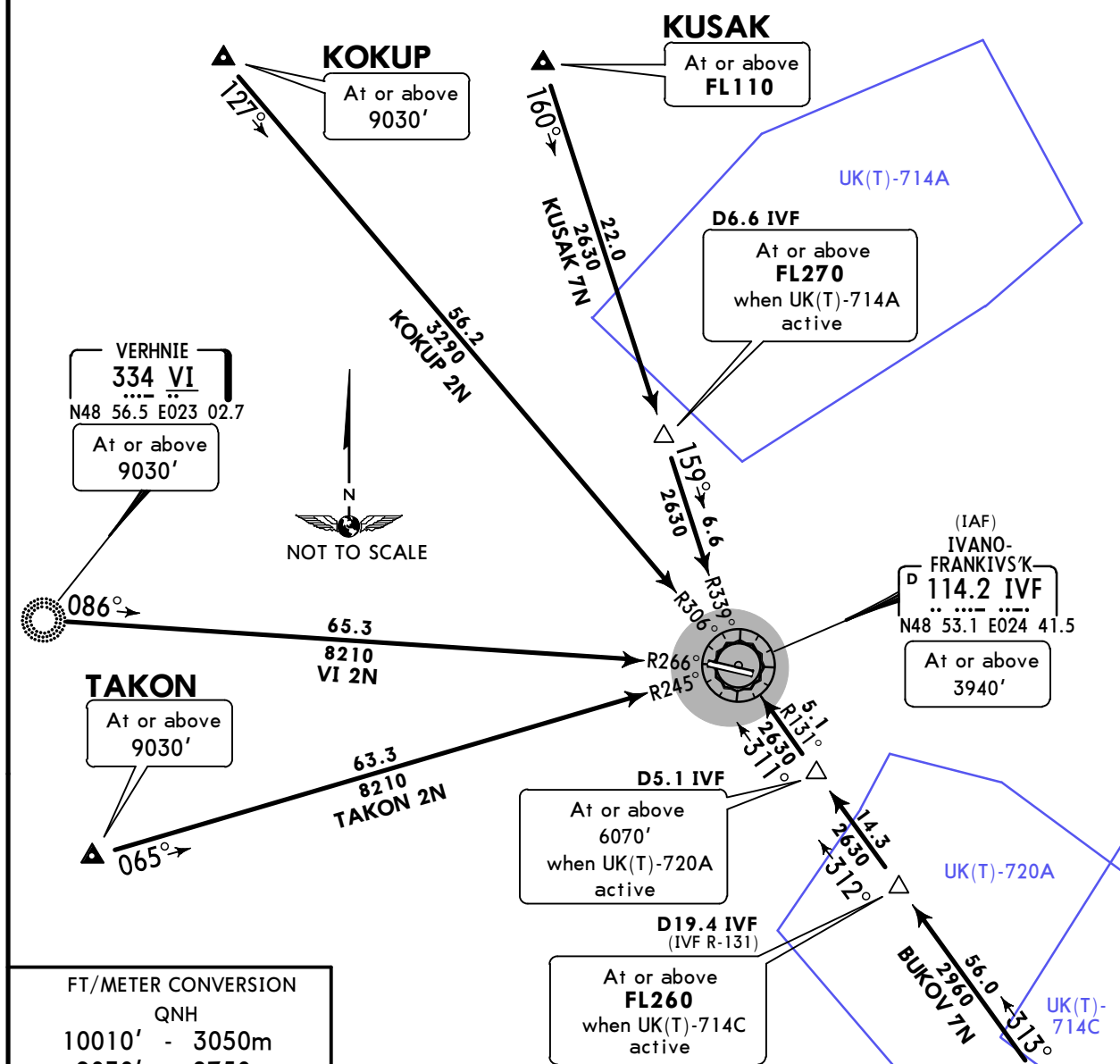
UKLI/IFO
IVANO-FRANKIVS'K

JEPPESSEN **IVANO-FRANKIVS'K, UKRAINE**
27 JAN 17 **10-2E** **Eff 2 Feb** **STAR**

Apt Elev **919'** Alt Set: hPa (MM on request)
Trans level: By ATC Trans alt: 10010'

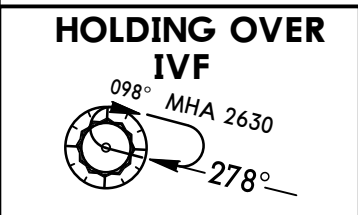


BUKOV 7N [BUK07N]
KOKUP 2N [KOKU2N]
KUSAK 7N [KUSA7N]
TAKON 2N [TAKO2N]
VERHNIE 2N (VI 2N) [VI2N]
RWY 28 ARRIVALS



FT/METER CONVERSION

QNH	
10010'	- 3050m
9030'	- 2750m
8210'	- 2500m
6070'	- 1850m
3940'	- 1200m
3290'	- 1000m
2960'	- 900m
2630'	- 800m



STAR	ROUTING
BUKOV 7N	On 313° track to D19.4 IVF, turn LEFT, 312° track to D5.1 IVF, turn LEFT, 311° track to IVF, then according to approach chart.
KOKUP 2N	On 127° track to IVF, then according to approach chart.
KUSAK 7N	On 160° track to D6.6 IVF, turn LEFT, 159° track to IVF, then according to approach chart.
TAKON 2N	On 065° track to IVF, then according to approach chart.
VI 2N	On 086° track to IVF, then according to approach chart.

CHANGES: Training areas idents revised.

UKLI/IFO
IVANO-FRANKIVS'K

JEPPESEN IVANO-FRANKIVS'K, UKRAINE

27 JAN 17

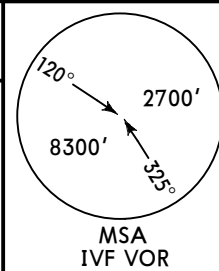
10-3

Eff 2 Feb

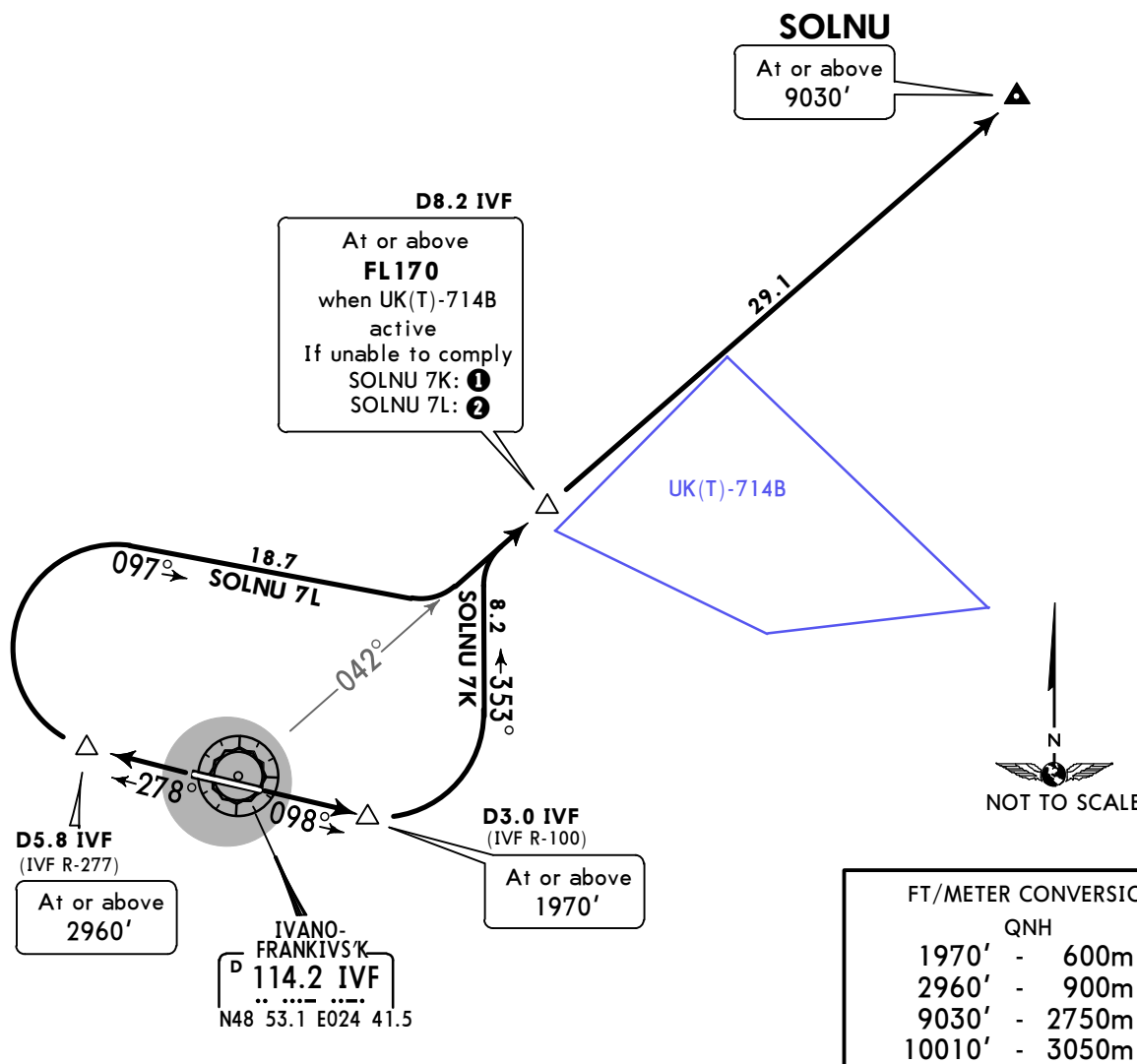
SID

Apt Elev
919'

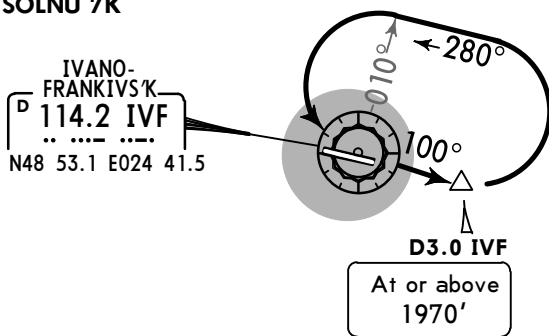
Trans level: By ATC Trans alt: 10010'



SOLNU 7K [SOLN7K]
SOLNU 7L [SOLN7L]
DEPARTURES

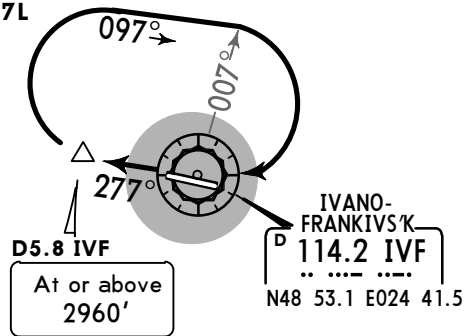


① SOLNU 7K



Report to ATC, then after take-off climb to 1970', turn LEFT, 280° track, after intercepting IVF R-010 turn LEFT, IVF R-100 to D3.0 IVF, turn LEFT, 353° track, turn RIGHT, intercept IVF R-042 to SOLNU climbing to FL170 or above at D8.2 IVF.

② SOLNU 7L



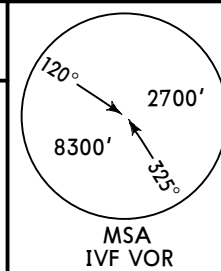
Report to ATC, then after take-off climb to 2960', turn RIGHT, 097° track, after intercepting IVF R-007 turn RIGHT, IVF R-277 to D5.8 IVF, turn RIGHT, 097° track, turn LEFT, intercept IVF R-042 to SOLNU climbing to FL170 or above at D8.2 IVF.

SID	RWY	ROUTING
SOLNU 7K	10	Climb on 098° track to D3.0 IVF, turn LEFT, 353° track, turn RIGHT, intercept IVF R-042 to SOLNU.
SOLNU 7L	28	Climb on 278° track to D5.8 IVF, turn RIGHT, 097° track, turn LEFT, intercept IVF R-042 to SOLNU.

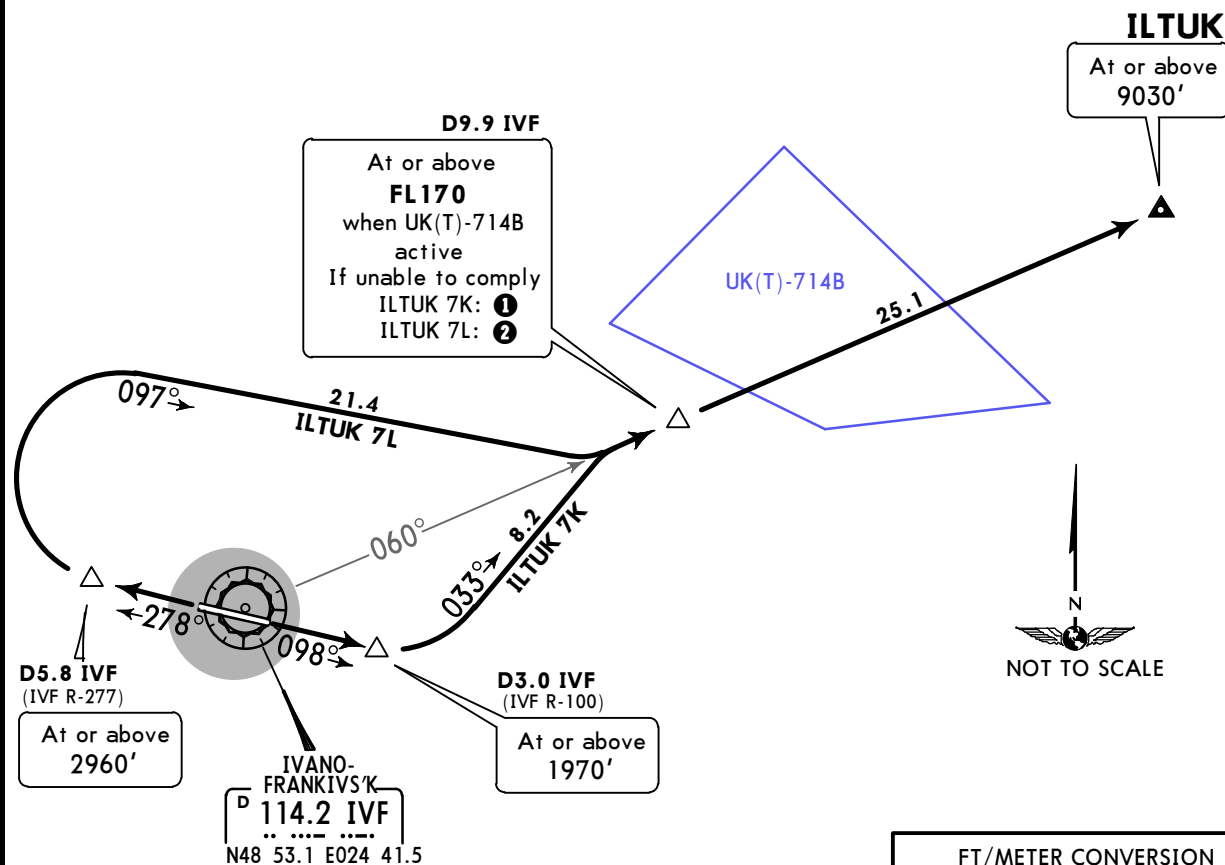
UKLI/IFO
IVANO-FRANKIVS'K

JEPPESEN IVANO-FRANKIVS'K, UKRAINE
27 JAN 17 (10-3A) Eff 2 Feb **SID**

Apt Elev 919' Trans level: By ATC Trans alt: 10010'



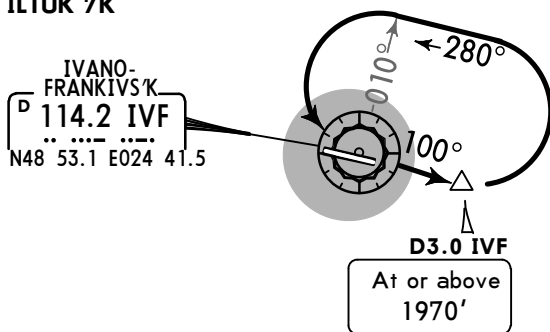
**ILTUK 7K [ILTU7K]
ILTUK 7L [ILTU7L]
DEPARTURES**



FT/METER CONVERSION
QNH

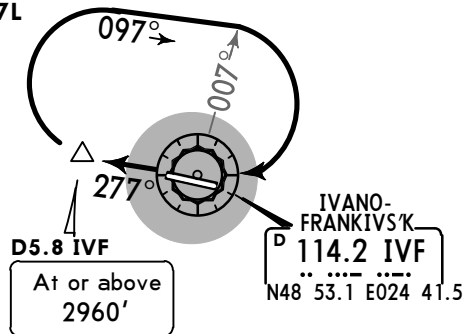
1970'	-	600m
2960'	-	900m
9030'	-	2750m
10010'	-	3050m

① ILTUK 7K



Report to ATC, then after take-off climb to 1970', turn LEFT, 280° track, after intercepting IVF R-010 turn LEFT, IVF R-100 to D3.0 IVF, turn LEFT, 033° track, turn RIGHT, intercept IVF R-060 to ILTUK climbing to FL170 or above at D9.9 IVF.

② ILTUK 7L



Report to ATC, then after take-off climb to 2960', turn RIGHT, 097° track, after intercepting IVF R-007 turn RIGHT, IVF R-277 to D5.8 IVF, turn RIGHT, 097° track, turn LEFT, intercept IVF R-060 to ILTUK climbing to FL170 or above at D9.9 IVF.

SID	RWY	ROUTING
ILTUK 7K	10	Climb on 098° track to D3.0 IVF, turn LEFT, 033° track, turn RIGHT, intercept IVF R-060 to ILTUK.
ILTUK 7L	28	Climb on 278° track to D5.8 IVF, turn RIGHT, 097° track, turn LEFT, intercept IVF R-060 to ILTUK.

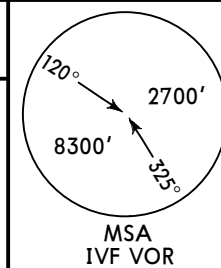
UKLI/IFO
IVANO-FRANKIVS'K

JEPPESEN
27 JAN 17 (10-3B)

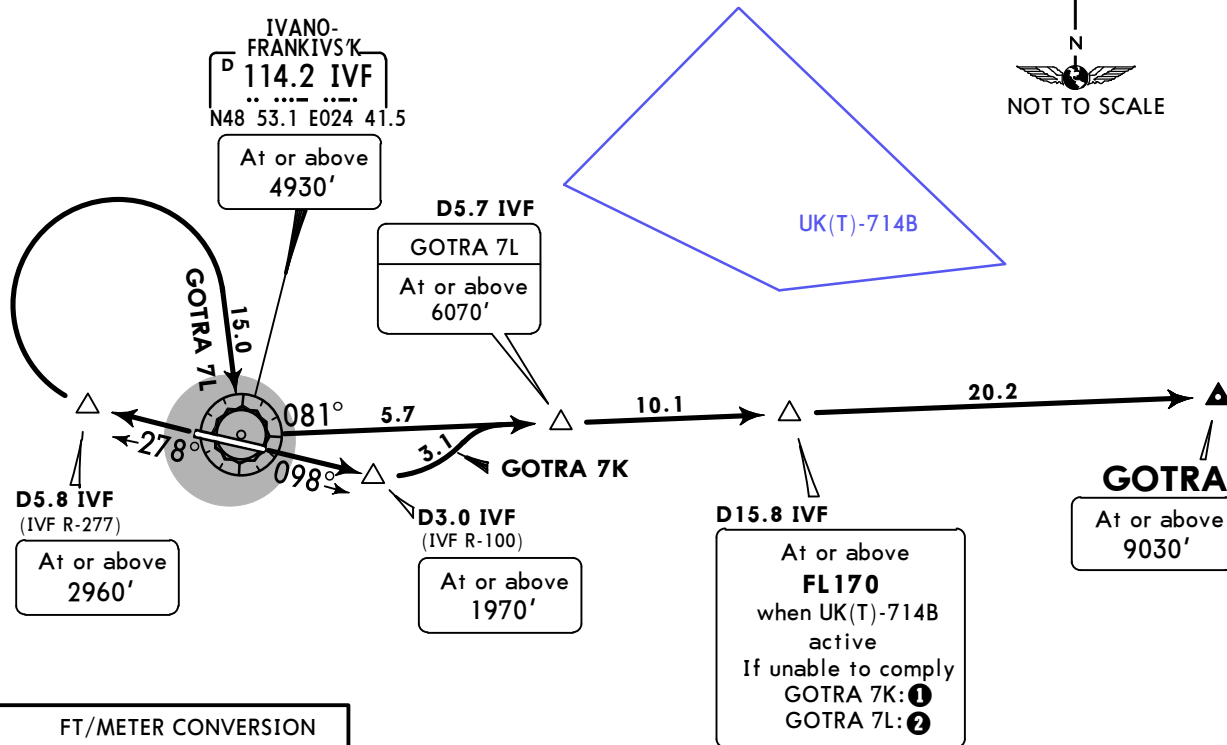
IVANO-FRANKIVS'K, UKRAINE
Eff 2 Feb **SID**

Apt Elev
919'

Trans level: By ATC Trans alt: 10010'



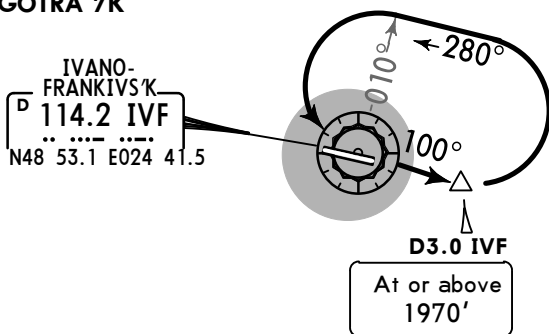
**GOTRA 7K [GOTR7K]
GOTRA 7L [GOTR7L]
DEPARTURES**



FT/METER CONVERSION

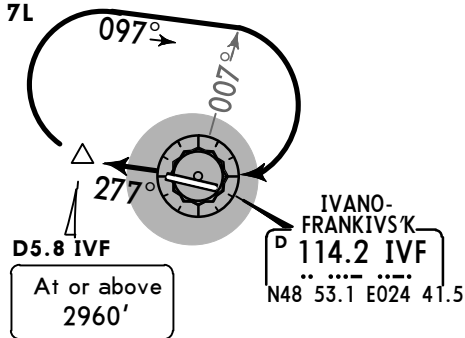
QNH	
1970'	- 600m
2960'	- 900m
4930'	- 1500m
6070'	- 1850m
9030'	- 2750m
10010'	- 3050m

① GOTRA 7K



Report to ATC, then after take-off climb to 1970', turn LEFT, 280° track, after intercepting IVF R-010 turn LEFT, IVF R-100 to D3.0 IVF, turn LEFT, intercept IVF R-081 to GOTRA climbing to FL170 or above at D15.8 IVF.

② GOTRA 7L



Report to ATC, then after take-off climb to 2960', turn RIGHT, 097° track, after intercepting IVF R-007 turn RIGHT, IVF R-277 to D5.8 IVF, turn RIGHT to IVF, turn LEFT, IVF R-081 to GOTRA climbing to FL170 or above at D15.8 IVF.

SID	RWY	ROUTING
GOTRA 7K	10	Climb on 098° track to D3.0 IVF, turn LEFT, intercept IVF R-081 to GOTRA.
GOTRA 7L	28	Climb on 278° track to D5.8 IVF, turn RIGHT to IVF, turn LEFT, IVF R-081 to GOTRA.

UKLI/IFO
IVANO-FRANKIVS'K

JEPPESEN IVANO-FRANKIVS'K, UKRAINE

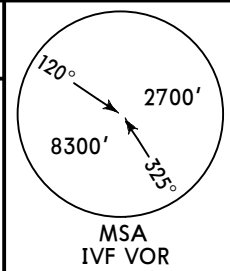
27 JAN 17

10-3C

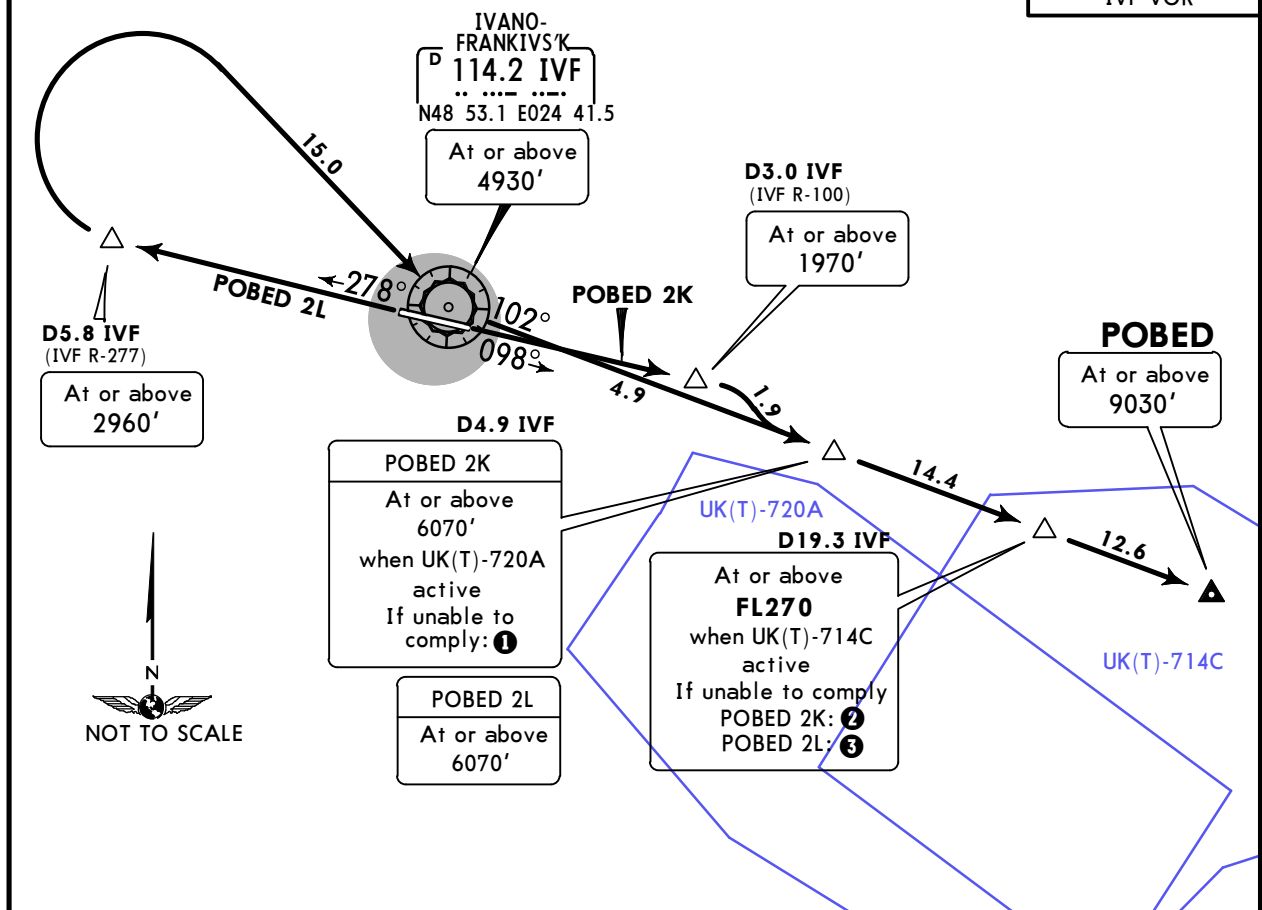
Eff 2 Feb

SID

Apt Elev 919' Trans level: By ATC Trans alt: 10010'



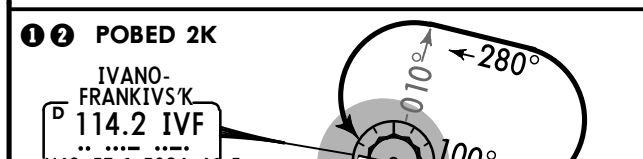
**POBED 2K [POBE2K]
POBED 2L [POBE2L]
DEPARTURES**



FT/METER CONVERSION

QNH

1970'	-	600m
2960'	-	900m
4930'	-	1500m
6070'	-	1850m
9030'	-	2750m
10010'	-	3050m



- Report to ATC, then after take-off climb to 1970', turn LEFT, 280° track, after intercepting IVF R-010 turn LEFT, IVF R-100 to D3.0 IVF, turn RIGHT, intercept IVF R-102 to POBED climbing to 6070' or above at D4.9 IVF.
- Report to ATC, then after take-off climb to 1970', turn LEFT, 280° track, after intercepting IVF R-010 turn LEFT, IVF R-100 to D3.0 IVF, turn RIGHT, intercept IVF R-102 to POBED climbing to FL270 or above at D19.3 IVF.



- Report to ATC, then after take-off climb to 2960', turn RIGHT, 097° track, after intercepting IVF R-007 turn RIGHT, IVF R-277 to D5.8 IVF, turn RIGHT to IVF, turn LEFT, IVF R-102 to POBED climbing to FL270 or above at D19.3 IVF.

SID	RWY	ROUTING
POBED 2K	10	Climb on 098° track to D3.0 IVF, turn RIGHT, intercept IVF R-102 to POBED.
POBED 2L	28	Climb on 278° track to D5.8 IVF, turn RIGHT to IVF, turn LEFT, IVF R-102 to POBED.

CHANGES: Training areas idents revised.

UKLI/IFO
IVANO-FRANKIVS'K

JEPPesen IVANO-FRANKIVS'K, UKRAINE

27 JAN 17

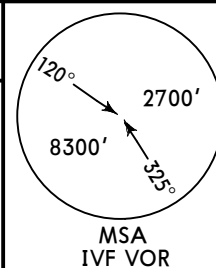
10-3D

Eff 2 Feb

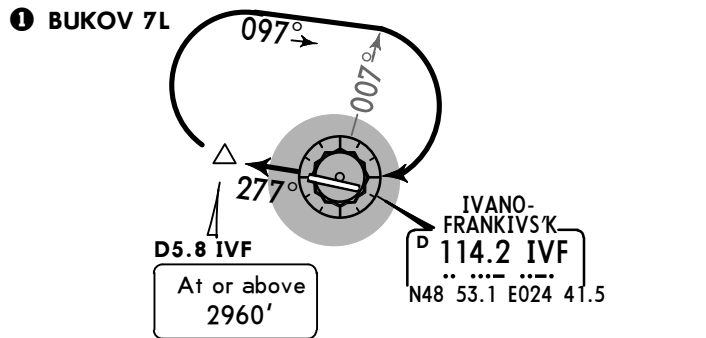
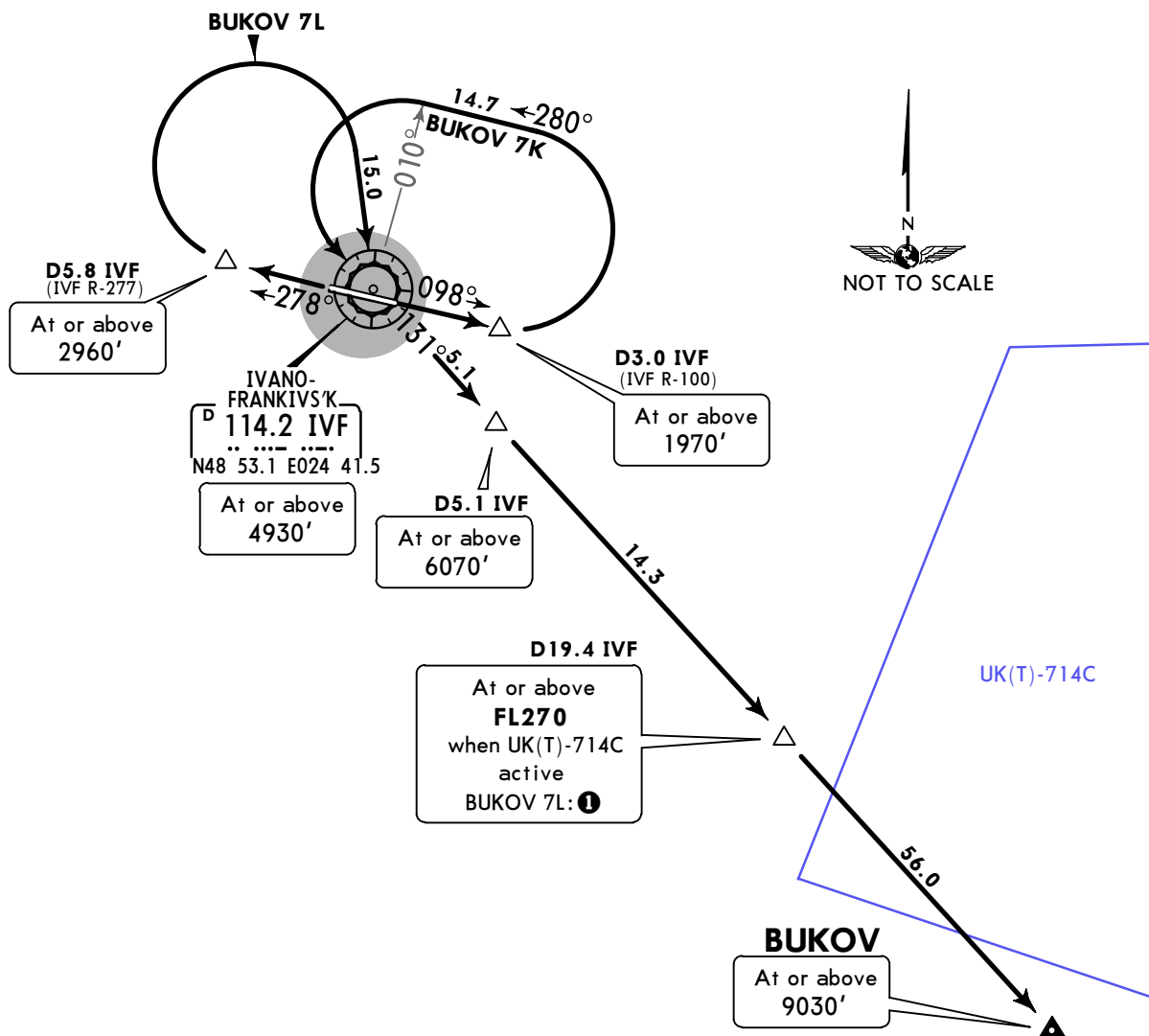
SID

Apt Elev
919'

Trans level: By ATC Trans alt: 10010'



**BUKOV 7K [BUK07K]
BUKOV 7L [BUK07L]
DEPARTURES**



If unable to comply, report to ATC, then after take-off climb to 2960', turn RIGHT, 097° track, after intercepting IVF R-007 turn RIGHT, IVF R-277 to D5.8 IVF, turn RIGHT to IVF, turn LEFT, IVF R-131 to BUKOV climbing to FL270 or above at D19.4 IVF.

FT/METER CONVERSION	
QNH	
1970'	600m
2960'	900m
4930'	1500m
6070'	1850m
9030'	2750m
10010'	3050m

SID	RWY	ROUTING
BUKOV 7K	10	Climb on 098° track to D3.0 IVF, turn LEFT, 280° track, when passing IVF R-010 turn LEFT to IVF, turn RIGHT, IVF R-131 to BUKOV.
BUKOV 7L	28	Climb on 278° track to D5.8 IVF, turn RIGHT to IVF, turn LEFT, IVF R-131 to BUKOV.

UKLI/IFO
IVANO-FRANKIVS'K

JEPPESEN IVANO-FRANKIVS'K, UKRAINE

27 JAN 17

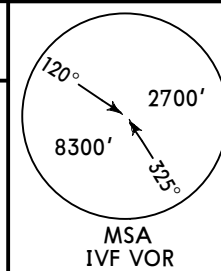
10-3E

Eff 2 Feb

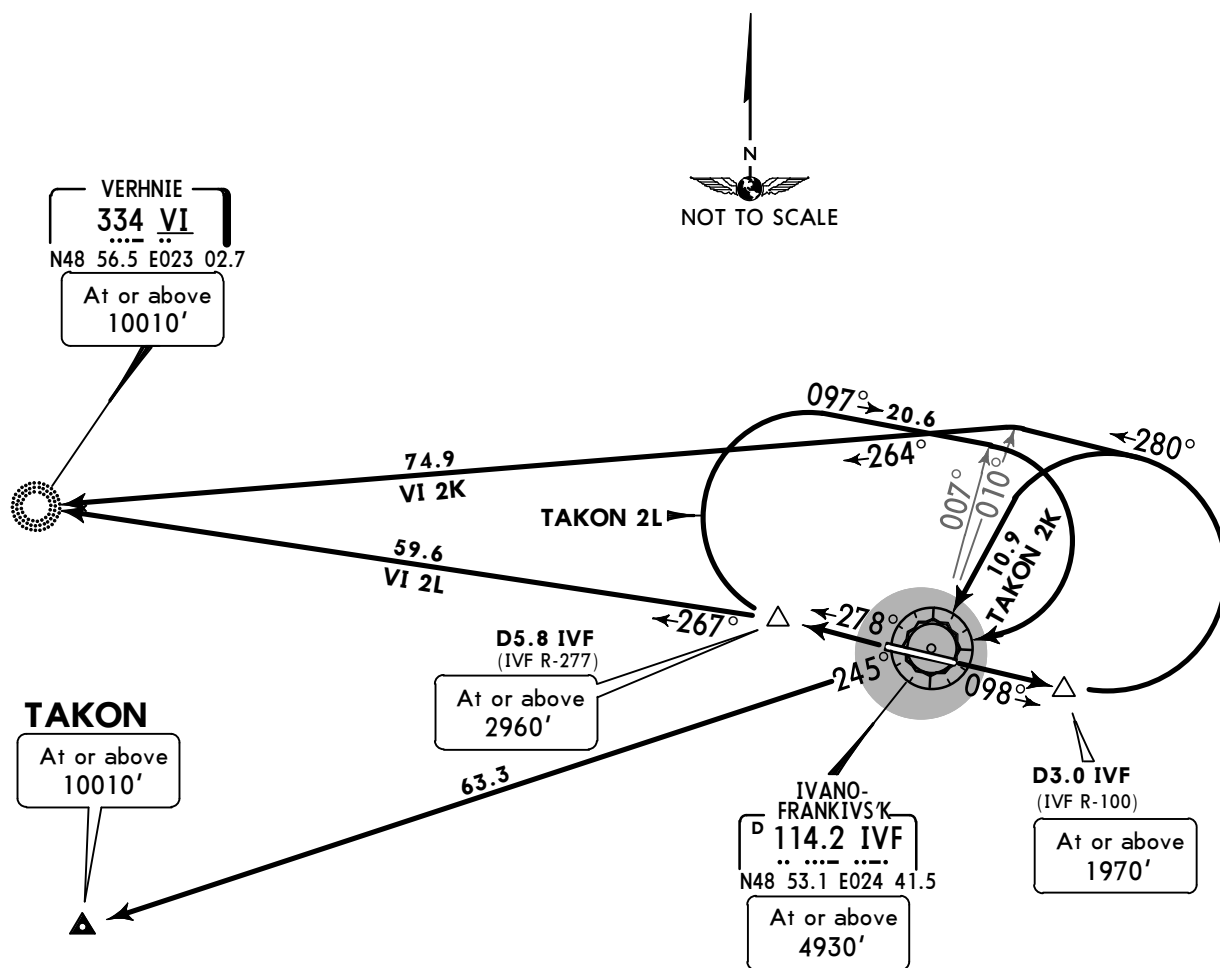
SID

Apt Elev
 919'

Trans level: By ATC Trans alt: 10010'



TAKON 2K [TAK02K]
TAKON 2L [TAK02L]
VERHNIE 2K (VI 2K) [VI2K]
VERHNIE 2L (VI 2L) [VI2L]
DEPARTURES



TAKON 2K

This SID requires a minimum climb gradient of 4.9% up to 4930'.

Gnd speed-KT	75	100	150	200	250	300
4.9% V/V (fpm)	372	496	744	992	1241	1489

If unable to comply, advise ATC.

FT/METER CONVERSION	
QNH	
1970'	- 600m
2960'	- 900m
4930'	- 1500m
10010'	- 3050m

SID	RWY	ROUTING
TAKON 2K	10	Climb on 098° track to D3.0 IVF, turn LEFT to IVF, turn RIGHT, IVF R-245 to TAKON.
TAKON 2L	28	Climb on 278° track to D5.8 IVF, turn RIGHT, 097° track, when passing IVF R-007 turn RIGHT to IVF, IVF R-245 to TAKON.
VI 2K	10	Climb on 098° track to D3.0 IVF, turn LEFT, 280° track, when passing IVF R-010, turn LEFT, 264° bearing to VI.
VI 2L	28	Climb on 278° track to D5.8 IVF, turn LEFT, 267° bearing to VI.

UKLI/IFO
IVANO-FRANKIVS'K

JEPPESEN IVANO-FRANKIVS'K, UKRAINE

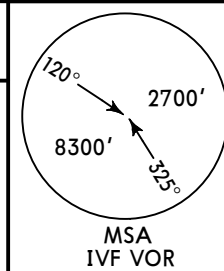
27 JAN 17

10-3F

Eff 2 Feb

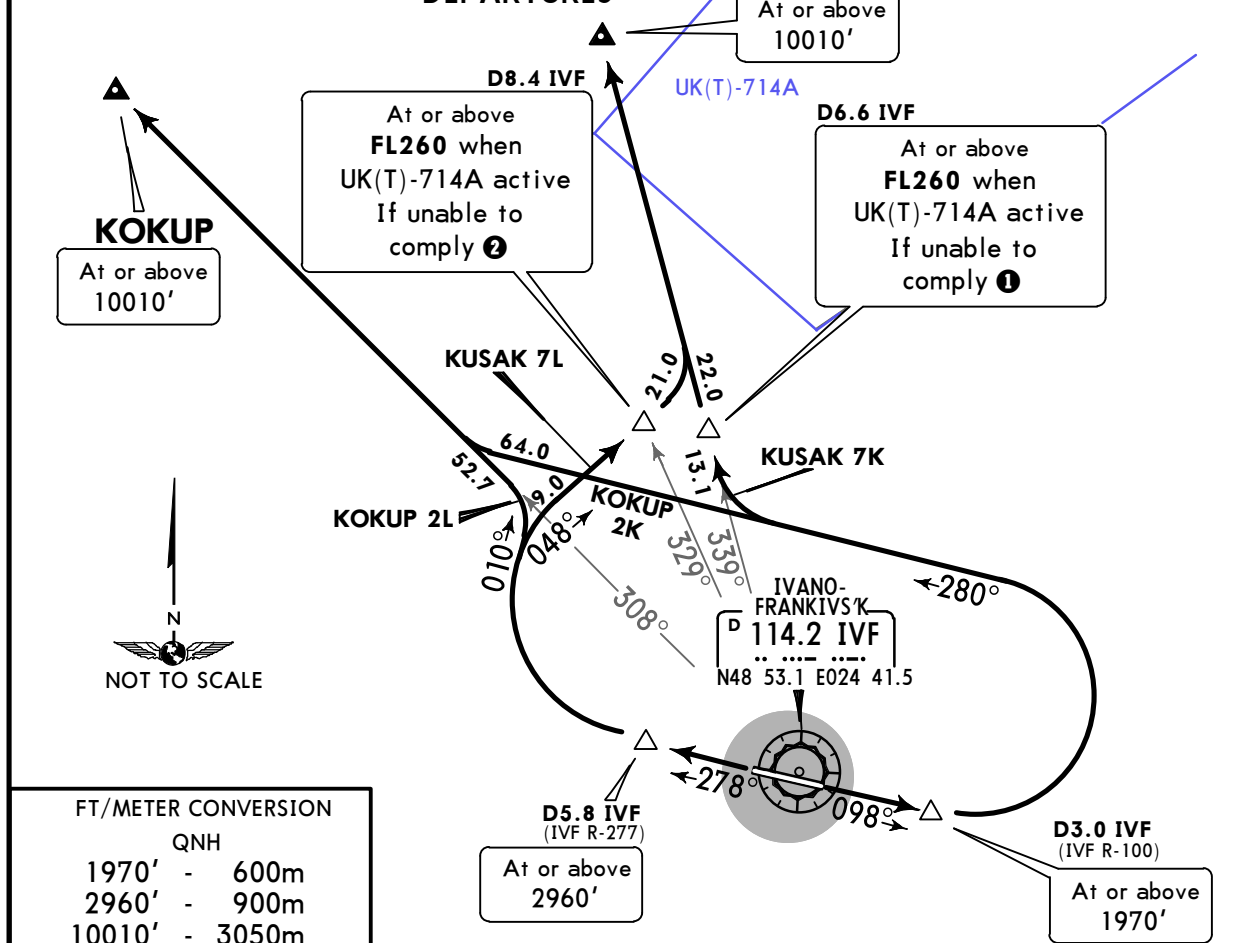
SID

Apt Elev 919' Trans level: By ATC Trans alt: 10010'



KOKUP 2K [KOKU2K]
KOKUP 2L [KOKU2L]
KUSAK 7K [KUSA7K]
KUSAK 7L [KUSA7L]

DEPARTURES

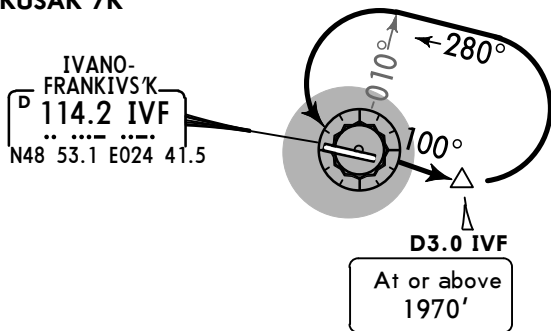


FT/METER CONVERSION

QNH

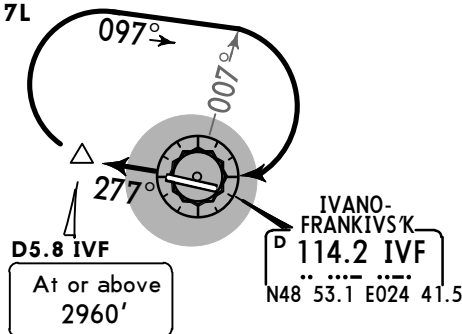
1970'	-	600m
2960'	-	900m
10010'	-	3050m

① KUSAK 7K



Report to ATC, then after take-off climb to 1970', turn LEFT, 280° track, after intercepting IVF R-010 turn LEFT, IVF R-100 to D3.0 IVF, turn LEFT, 280° track, turn RIGHT, intercept IVF R-339 to KUSAK climbing to FL260 or above at D6.6 IVF.

② KUSAK 7L



Report to ATC, then after take-off climb to 2960', turn RIGHT, 097° track, after intercepting IVF R-007 turn RIGHT, IVF R-277 to D5.8 IVF, turn RIGHT, 048° track, turn LEFT, intercept IVF R-339 to KUSAK climbing to FL260 or above at D8.4 IVF.

SID	RWY	ROUTING
KOKUP 2K	10	Climb on 098° track to D3.0 IVF, turn LEFT, 280° track, turn RIGHT, intercept IVF R-308 to KOKUP.
KOKUP 2L	28	Climb on 278° track to D5.8 IVF, turn RIGHT, 010° track, turn LEFT, intercept IVF R-308 to KOKUP.
KUSAK 7K	10	Climb on 098° track to D3.0 IVF, turn LEFT, 280° track, turn RIGHT, intercept IVF R-339 to KUSAK.
KUSAK 7L	28	Climb on 278° track to D5.8 IVF, turn RIGHT, 048° track, turn LEFT, intercept IVF R-339 to KUSAK.

UKLI/IFO
IVANO-FRANKIVS'K

JEPPESEN **IVANO-FRANKIVS'K, UKRAINE**
29 JAN 16 **10-4** **Eff 4 Feb** **SID**

NOISE ABATEMENT

Noise abatement procedures prescribe special departure procedures mandatory for cockpit crews at any time if safety reasons do not demand otherwise.

DEPARTURES

1. Initial take-off and climb 450m (1500') above aerodrome level:
 - Maintain take-off power of all engines;
 - Retract gears;
 - Climb with take-off wing configuration (flaps 10-30°) in accordance with manual;
 - Keep IAS of $V_2 + 20-40\text{km/h}$ (10-20KT) and maximum climb angle regarding body angle restriction.

2. At 450m (1500'):
 - Reduce to rated power;
 - Climb to 900m (3000') maintaining rated power and IAS of $V_2 + 20-40\text{km/h}$ (10-20KT).

3. At 900m (3000'):
 - Reduce rate of climb;
 - Start climb acceleration to zero flaps speed;
 - Retract flaps to flight wing configuration.

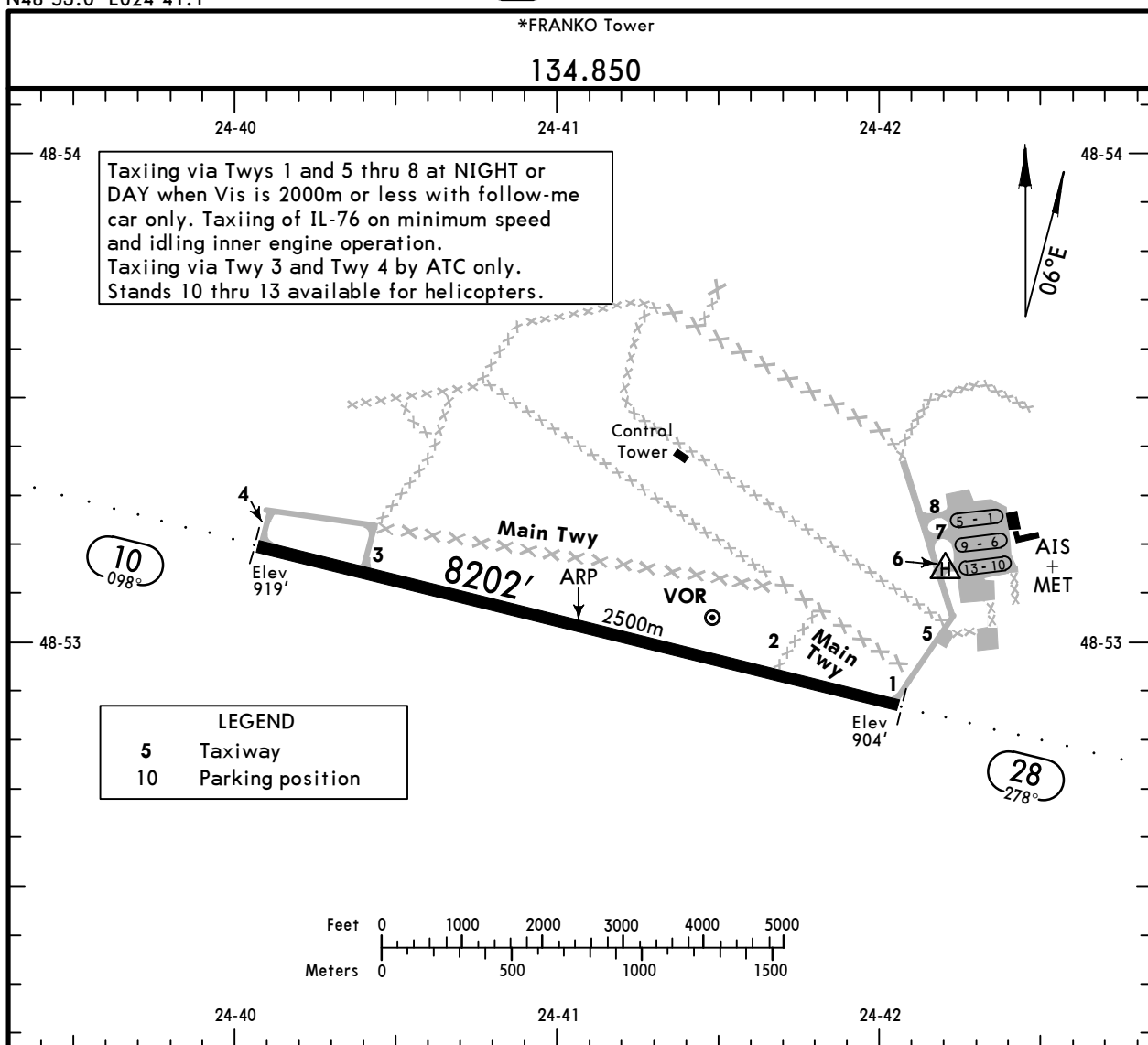
UKLI/IFO

Apt Elev 919'
N48 53.0 E024 41.1

JEPPESEN IVANO-FRANKIVS'K, UKRAINE

29 JAN 16 (10-9) Eff 4 Feb

IVANO-FRANKIVS'K



ADDITIONAL RUNWAY INFORMATION

RWY					USABLE LENGTHS		TAKE-OFF	WIDTH
					Threshold	Landing Beyond		
10 28	RL (60m)	ALS	PAPI-L (angle 3.0°)	RVR	8120' 2475m	7026' 2142m 7087' 2160m	8120' 2475m	144' 44m

JAR-OPS		TAKE-OFF 1	
LVP must be in force		All Rwys	
	RCLM (DAY only) or RL	RCLM (DAY only) or RL	NIL (DAY only)
A			
B	250m	400m	500m
C			
D	300m		

1 Operators applying U.S. Ops Specs: CL required below 300m.

UKLI/IFO

JEPPESEN
31 MAR 17 **(10-9S)**

Standard
IVANO-FRANKIVS'K, UKRAINE
IVANO-FRANKIVS'K

STRAIGHT-IN RWY		A	B	C	D
10	ILS	1119'(200') R1000m	1119'(200') R1000m	1119'(200') R1000m	1126'(207') R1000m
	ALS out	R1200m	R1200m	R1200m	R1200m
	LOC ①	1240'(321') R1300m	1240'(321') R1300m	1240'(321') R1300m	1240'(321') R1300m
	with D2.4	R1500m	R1500m	R1500m	R1500m
	ALS out	R1500m	R1500m	R1500m	R1500m
	LOC ①	1690'(771') R1500m	1690'(771') R1500m	1690'(771') R2400m	1690'(771') R2400m
w/o D2.4	R1500m	R1500m	R2400m	R2400m	
VOR ①	1280'(361') R1500m	1280'(361') R1500m	1280'(361') R1500m	1280'(361') R1500m	
with D3.1	R1500m	R1500m	R1500m	R1500m	
ALS out	R1500m	R1500m	R1700m	R1700m	
VOR ①	1730'(811') R1500m	1730'(811') R1500m	1730'(811') R2400m	1730'(811') R2400m	
w/o D3.1	R1500m	R1500m	R2400m	R2400m	
28	ILS	1104'(200') R1000m	1104'(200') R1000m	1104'(200') R1000m	1107'(203') R1000m
	ALS out	R1200m	R1200m	R1200m	R1200m
	LOC ①	1270'(366') R1500m	1270'(366') R1500m	1270'(366') R1500m	1270'(366') R1500m
	ALS out	R1500m	R1500m	R1700m	R1700m
	VOR ①	1270'(366') R1500m	1270'(366') R1500m	1270'(366') R1500m	1270'(366') R1500m
	ALS out	R1500m	R1500m	R1700m	R1700m
	NDB ①	1300'(396') R1500m	1300'(396') R1500m	1300'(396') R1600m	1300'(396') R1600m
	ALS out	R1500m	R1500m	R1800m	R1800m

① Continuous Descent Final Approach.

CIRCLE-TO-LAND	100 KT	135 KT	180 KT	205 KT
After apch to Rwy 10	1710'(791') ②	1780'(861')	1870'(951')	1870'(951')
After apch to Rwy 28	1330'(411')	1780'(861')	1870'(951')	1870'(951')
	V1500m	V1600m	V2400m	V3600m

② or higher minimums of preceding straight-in approach.

TAKE-OFF RWY 10, 28

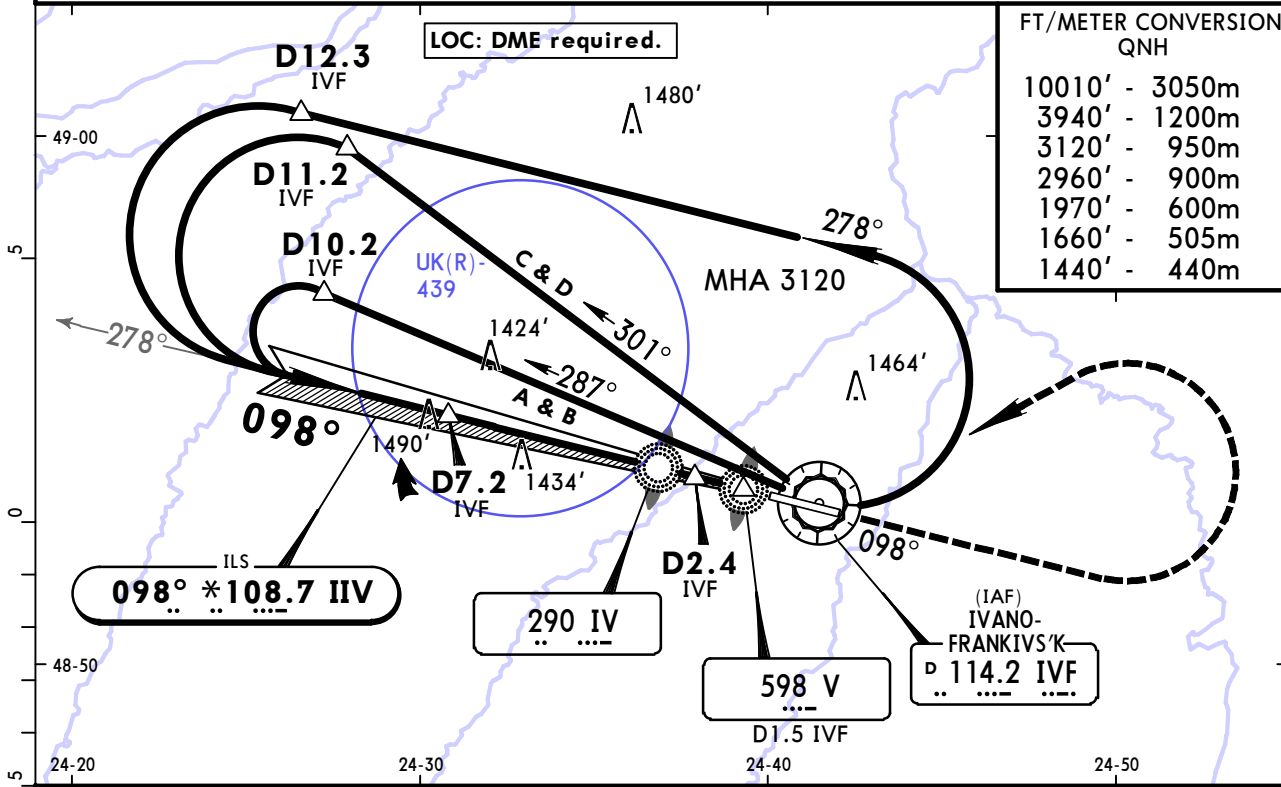
Low Visibility Take-off		Day: RL or RCLM Night: RL		Adequate vis ref (Day only)
A	R300m	400m		500m
B				
C				
D				

UKLI/IFO
IVANO-FRANKIVS'K

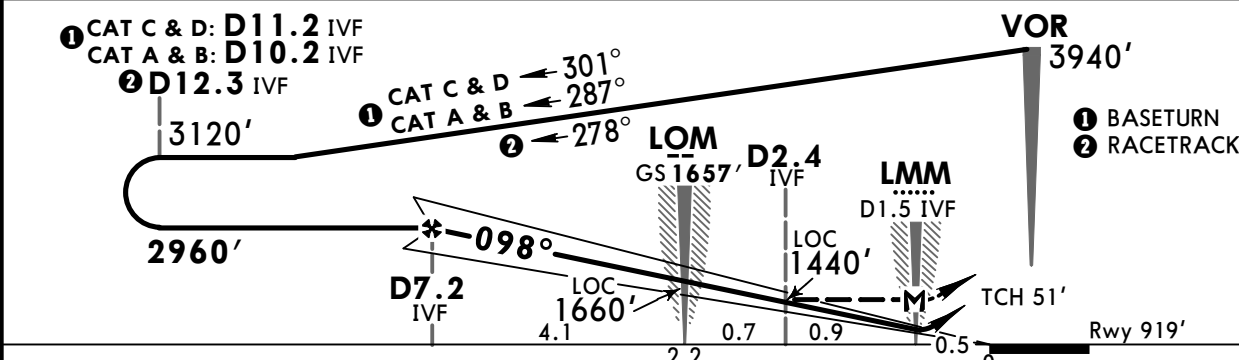
JEPPESSEN 29 JAN 16 (11-1) **Eff 4 Feb**

IVANO-FRANKIVS'K, UKRAINE
ILS or LOC Rwy 10

*FRANKO Radar				*FRANKO Tower			
127.3				134.850			
LOC IIV *108.7	Final Apch Crs 098°	GS LOM 1657' (738')	ILS DA(H) Refer to Minimums	Apt Elev 919'	Rwy 919'	<p>MSA IVF VOR</p>	
<p>MISSED APCH: Climb on 098° to 1970', turn LEFT climbing to 3940' to VOR, then according to chart.</p>							
Alt Set: hPa		Rwy Elev: 33 hPa		Trans level: By ATC		Trans alt: 10010'	



LOC (GS out)	IVF DME	7.0	5.9	4.9	3.8	2.7	1.6
	ALTITUDE	2900'	2560'	2220'	1880'	1530'	1190'

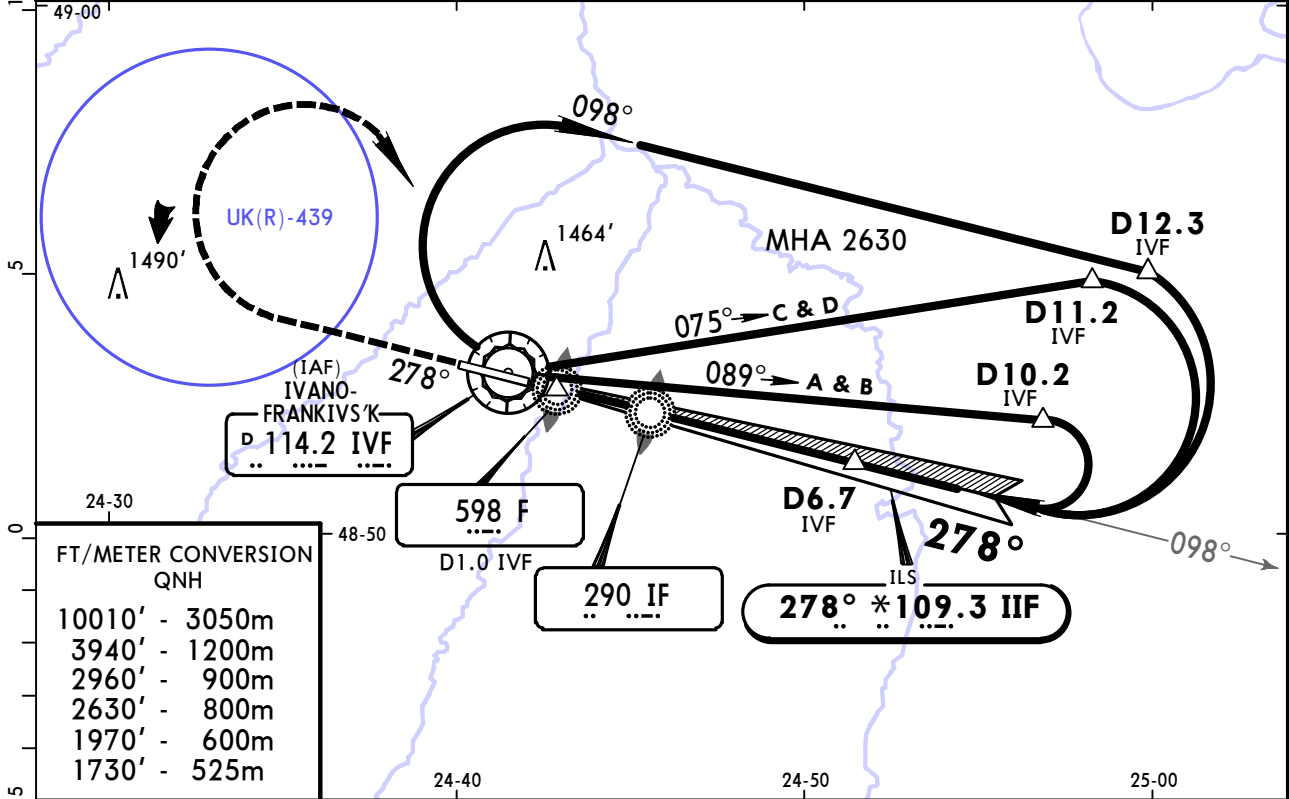


Gnd speed-Kts	70	90	100	120	140	160		
ILS GS or LOC Descent Angle	3.00°	372	478	531	637	743	849	
MAP at LMM/D1.5 IVF								

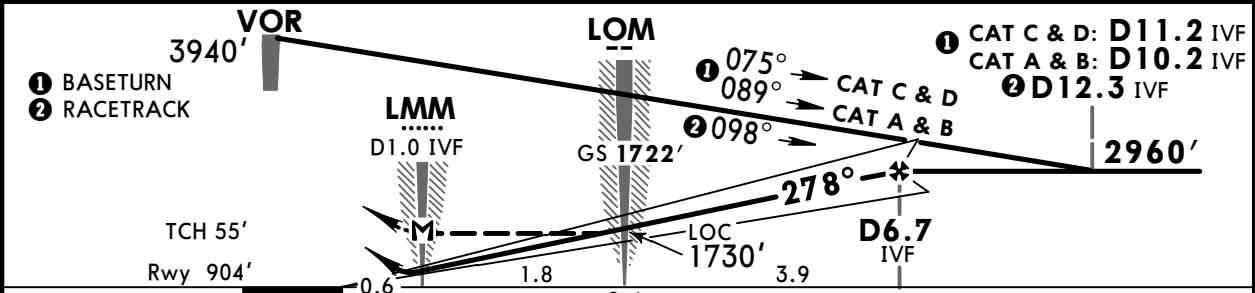
JAR-OPS				STRAIGHT-IN LANDING RWY 10				CIRCLE-TO-LAND			
ILS DA(H) ABC: 1119' (200')		D: 1126' (207')		LOC (GS out) with D2.4 IVF MDA(H) 1240' (321)		w/o D2.4 IVF MDA(H) 1690' (771')		Max Kts		MDA(H) VIS	
FULL		ALS out		ALS out		ALS out		100		1710' (791') 1500m	
A		RVR 1000m		RVR 1300m		RVR 1500m		135		1780' (861') 1600m	
B		RVR 800m		RVR 1400m		RVR 1500m		180		1870' (951') 2400m	
C		RVR 1000m		RVR 1600m		RVR 1800m		205		1870' (951') 3600m	
D		RVR 800m		RVR 1800m		RVR 2000m					

UKLI/IFO IVANO-FRANKIVS'K 29 JAN 16 (11-2) Eff 4 Feb ILS or LOC Rwy 28

*FRANKO Radar				*FRANKO Tower			
127.3				134.850			
LOC IIF *109.3	Final Apch Crs 278°	GS LOM 1722' (818')	ILS DA(H) Refer to Minimums	Apt Elev 919'	Rwy 904'		
MISSED APCH: Climb on 278° to 1970', turn RIGHT climbing to 3940' to VOR, then according to chart.							MSA IVF VOR
Alt Set: hPa		Rwy Elev: 33 hPa		Trans level: By ATC		Trans alt: 10010'	
LOC: DME required.							



LOC (GS out)	IVF DME ALTITUDE	1.1	2.2	3.2	4.3	5.4	6.5
		1180'	1520'	1860'	2200'	2540'	2890'



Gnd speed-Kts	70	90	100	120	140	160	ALS PAPI: 1970' on 278°
ILS GS or LOC Descent Angle	3.00°	372	478	531	637	743	
MAP at LMM/D1.0 IVF							

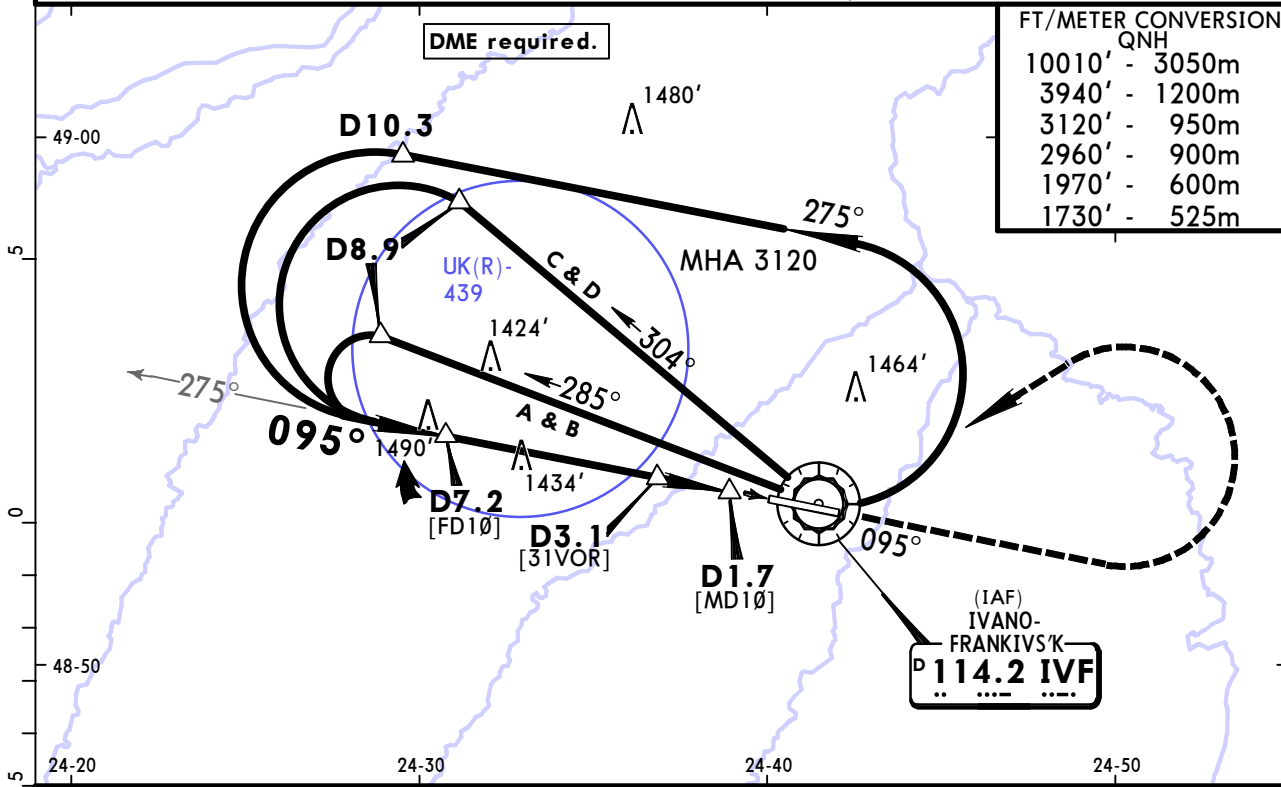
PANS OPS	JAR-OPS		STRAIGHT-IN LANDING RWY 28		CIRCLE-TO-LAND	
	DA(H) FULL	ALS out	LOC (GS out) MDA(H)	ALS out	Max Kts	MDA(H) VIS
A	1104' (200')		1270' (366')		100	1330' (411') 1500m
B					135	1780' (861') 1600m
C	RVR 800m	RVR 1000m			180	1870' (951') 2400m
D					205	1870' (951') 3600m

UKLI/IFO
IVANO-FRANKIVS'K

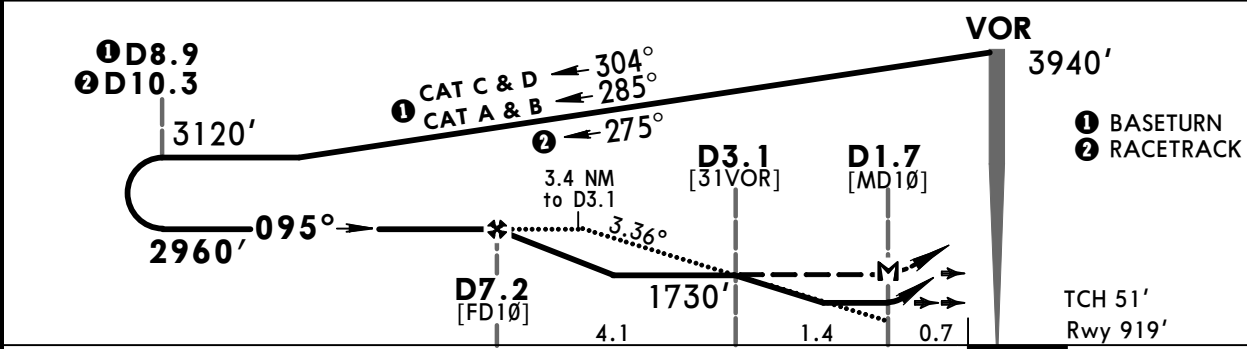
JEPPESSEN 29 JAN 16 **(13-1)** **Eff 4 Feb**

IVANO-FRANKIVS'K, UKRAINE
VOR Rwy 10

*FRANKO Radar				*FRANKO Tower	
127.3				134.850	
VOR IVF 114.2	Final Apch Crs 095°	Minimum Alt D7.2 2960' (2041')	MDA(H) CONDITIONAL 1280' (361')	Apt Elev 919'	Rwy 919'
MISSED APCH: Climb on 095° to 1970', turn LEFT climbing to 3940' to VOR, then according to chart.					
Alt Set: hPa		Rwy Elev: 33 hPa		Trans alt: 10010'	



IVF DME	7.0	5.9	4.9	3.8	2.7
ALTITUDE	2900'	2560'	2220'	1880'	1530'



Gnd speed-Kts	70	90	100	120	140	160	ALS PAPI	1970' on 095°	
Descent Angle 3.36°	416	535	595	713	832	951			
MAP at D1.7									

PANS OPS	STRAIGHT-IN LANDING RWY 10				CIRCLE-TO-LAND		
	with D3.1		w/o D3.1		Max Kts	MDA(H)	VIS
	MDA(H)	ALS out	MDA(H)	ALS out			
A	RVR 1300m	RVR 1500m	RVR 1500m		100	1740' (821')	1500m
B	RVR 1400m		RVR 2000m		135	1780' (861')	1600m
C	RVR 1600m	RVR 1800m	RVR 2000m		180	1870' (951')	2400m
D	RVR 1800m	RVR 2000m			205	1870' (951')	3600m

UKLI/IFO IVANO-FRANKIVS'K, UKRAINE

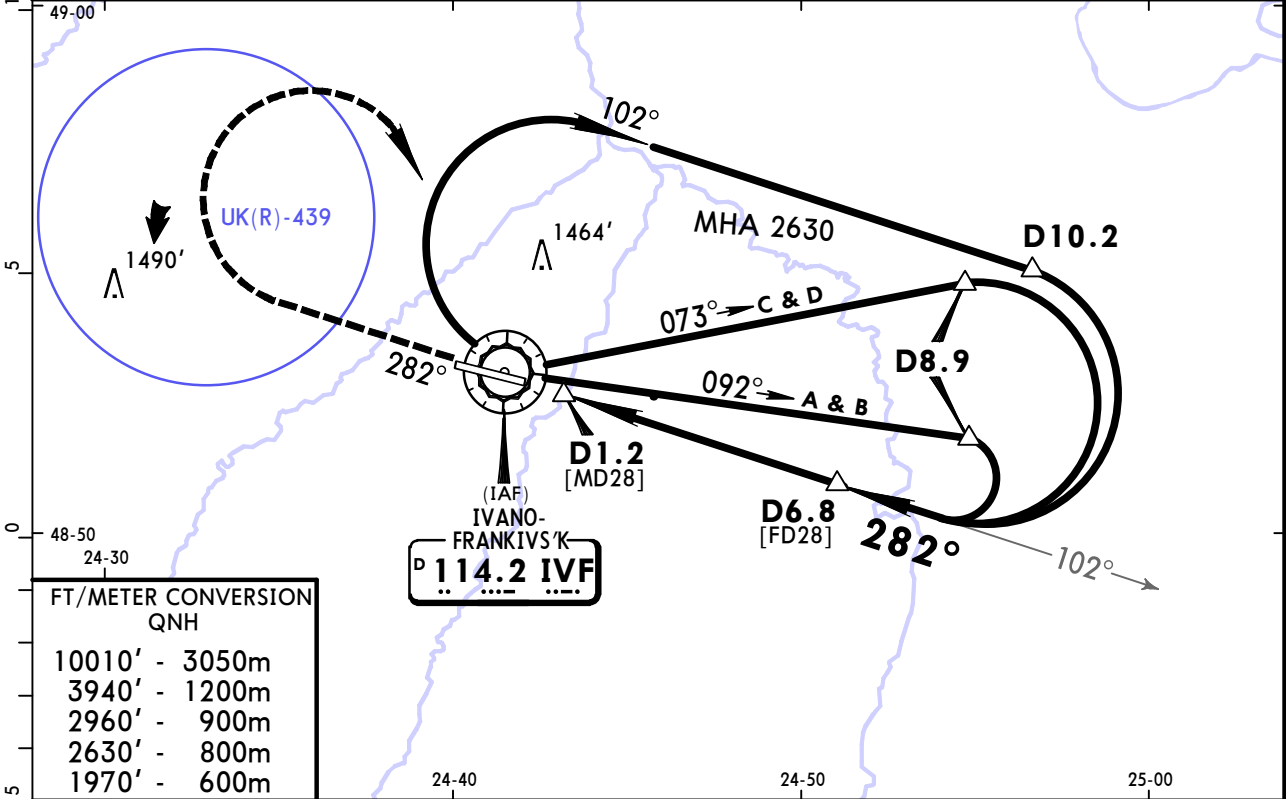
29 JAN 16 (13-2) Eff 4 Feb

VOR Rwy 28

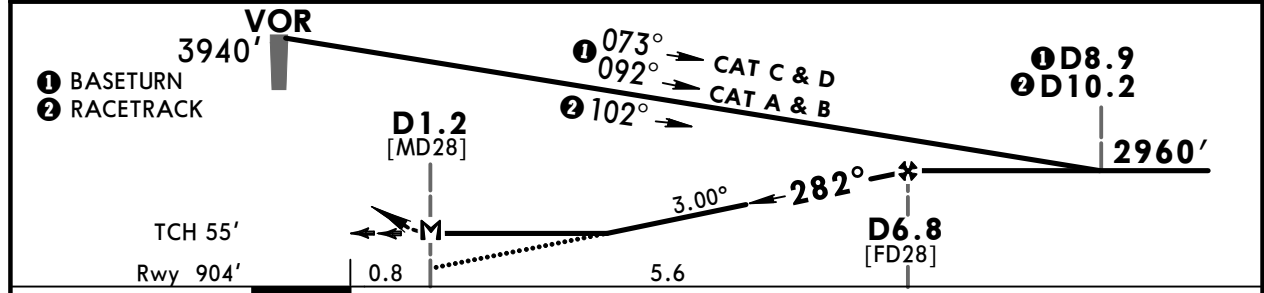
*FRANKO Radar			*FRANKO Tower		
127.3			134.850		
VOR IVF 114.2	Final Apch Crs 282°	Minimum Alt D6.8 2960' (2056')	MDA(H) 1270' (366')	Apt Elev 919'	Rwy 904'
MISSED APCH: Climb on 282° to 1970', turn RIGHT climbing to 3940' to VOR, then according to chart.					
MSA IVF VOR					

Alt Set: hPa Rwy Elev: 33 hPa Trans level: By ATC Trans alt: 10010'

DME required.



IVF DME	1.6	2.7	3.8	4.9	5.9
ALTITUDE	1350'	1690'	2030'	2370'	2710'



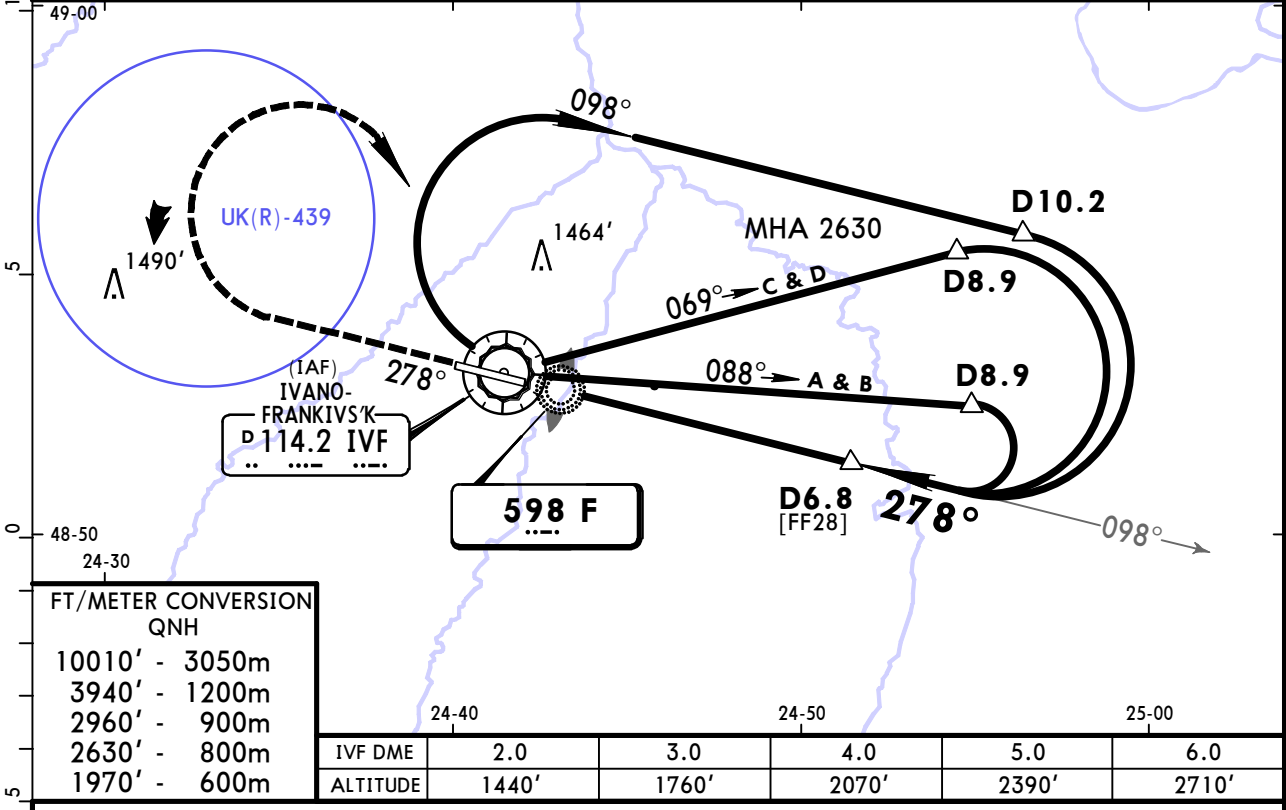
Gnd speed-Kts	70	90	100	120	140	160	ALS PAPI	1970' ↑ on 282°
Descent Angle 3.00°	372	478	531	637	743	849		
MAP at D1.2								

JAR-OPS STRAIGHT-IN LANDING RWY 28			CIRCLE-TO-LAND		
MDA(H) 1270' (366')			Max Kts		
ALS out			100	1330' (411')	1500m
A	RVR 1300m		135	1780' (861')	1600m
B	RVR 1400m		180	1870' (951')	2400m
C	RVR 1600m		205	1870' (951')	3600m
D	RVR 1800m				

PANS OPS

UKLI/IFO **JEPPESEN** **IVANO-FRANKIVS'K, UKRAINE**
IVANO-FRANKIVS'K 31 MAR 17 **(16-1)** **NDB Rwy 28**

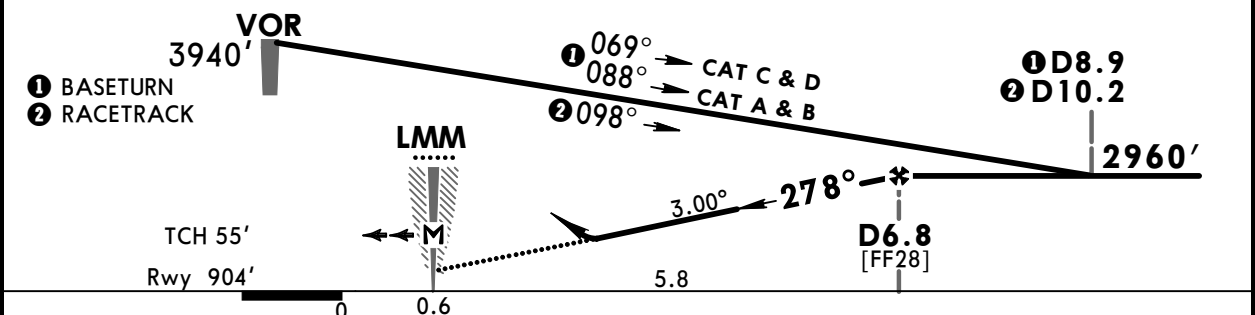
*FRANKO Radar			*FRANKO Tower		
127.3			134.850		
NDB F 598	Final Apch Crs 278°	Minimum Alt D6.8 2960' (2056')	DA/MDA(H) 1300' (396')	Apt Elev 919'	Rwy 904'
MISSED APCH: Climb on 278° to 1970', turn RIGHT climbing to 3940' to VOR, then according to chart.					
Alt Set: hPa		Rwy Elev: 33 hPa	Trans level: By ATC		Trans alt: 10010'
DME required.					



FT/METER CONVERSION
QNH

10010'	-	3050m
3940'	-	1200m
2960'	-	900m
2630'	-	800m
1970'	-	600m

IVF DME	2.0	3.0	4.0	5.0	6.0
ALTITUDE	1440'	1760'	2070'	2390'	2710'



Gnd speed-Kts	70	90	100	120	140	160	ALS PAPI	1970' on 278°
Descent Angle 3.00°	372	478	531	637	743	849		

Standard		STRAIGHT-IN LANDING RWY 28		CIRCLE-TO-LAND	
CDFA DA/MDA(H) 1300' (396')				ALS out	
A	RVR 1500m		Max Kts		MDA(H) VIS
B	RVR 1500m		100	1330'	(411') 1500m
C	RVR 1600m		135	1780'	(861') 1600m
D	RVR 1800m		180	1870'	(951') 2400m
	RVR 1800m		205	1870'	(951') 3600m

PANS OPS

Chart changes since cycle 01-2021

ADD = added chart, REV = revised chart, DEL = deleted chart.

ACT	PROCEDURE IDENT	INDEX	REV DATE	EFF DATE
-----	-----------------	-------	----------	----------

IVANO-FRANKIVSK, (IVANO-FRANKIVSK INTL - UKLI)

TERMINAL CHART CHANGE NOTICES

Chart Change Notices for Airport UKLI

Type: Terminal

Effectivity: Permanent

Begin Date: 20181108

End Date: No end date

FRANKO Radar communication with freq 127.3 MHz withdrawn. Airport name changed from Ivano-Frankivs'k to Ivano-Frankivsk Intl. Airport location name changed from Ivano-Frankivs'k to Ivano-Frankivsk.

Type: Terminal

Effectivity: Temporary

Begin Date: 20200326

End Date: Until Further Notice

(11-1) ILS or LOC Rwy 10 and (11-2) ILS or LOC Rwy 28 temporary suspended (based on AIRAC SUP 02/20). Refer also to latest NOTAMs.