

# Airport Information

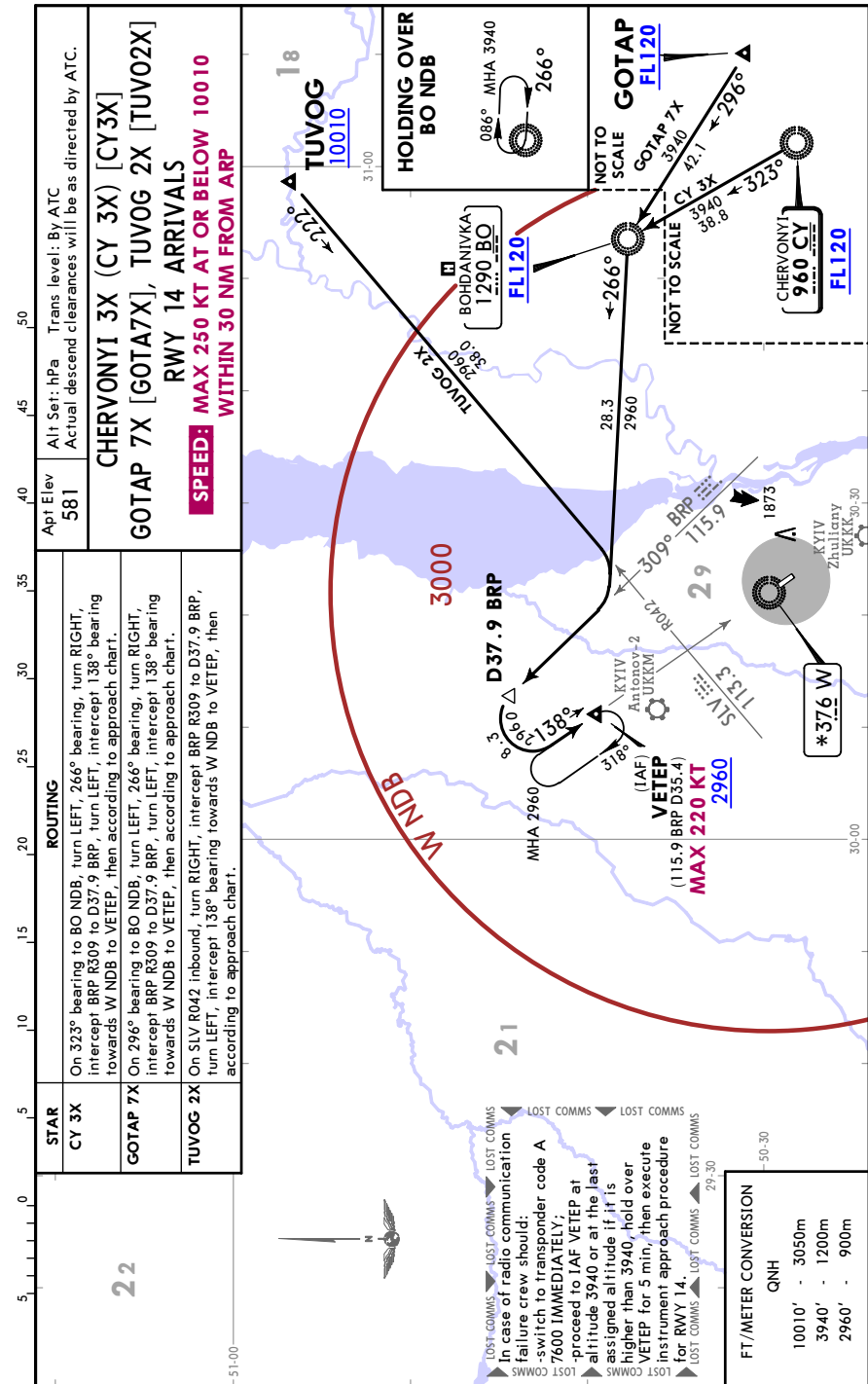
## Details for ANTONOV-1 NATL

City	KYIV
State/Province	
Country	UKR
Latitude	N 50° 28' 44.00"
Longitude	E 30° 23' 03.00"
Elevation	581
Longest Runway	5900
Magnetic Variance	E 7.0°
Fuel Type	No fuel is available.
Oxygen	Oxygen facilities are unavailable.
Repair Facility	Minor airframe repairs are available. Minor engine repairs are available. Major airframe repairs are available. Major engine repairs are available.
Landing Fee	There is a landing fee.
Jet Start Unit	A starting unit is not available at the airport.
Precision Approach	No charts for the airport support precision approaches
Beacon Light	A beacon light is not available.
Customs Facilities	No customs facilities are available
Usage Type	Airport/Heliport is open to the public.
Time Zone Conversion	-2:00=UTC
Daylight Savings	Airport observes daylight savings time
Change Notices Available	none

UKKT  
ANTONOV-1 NATL

JEPPESSEN  
17 MAY 19 (40-2) Eff 23 May

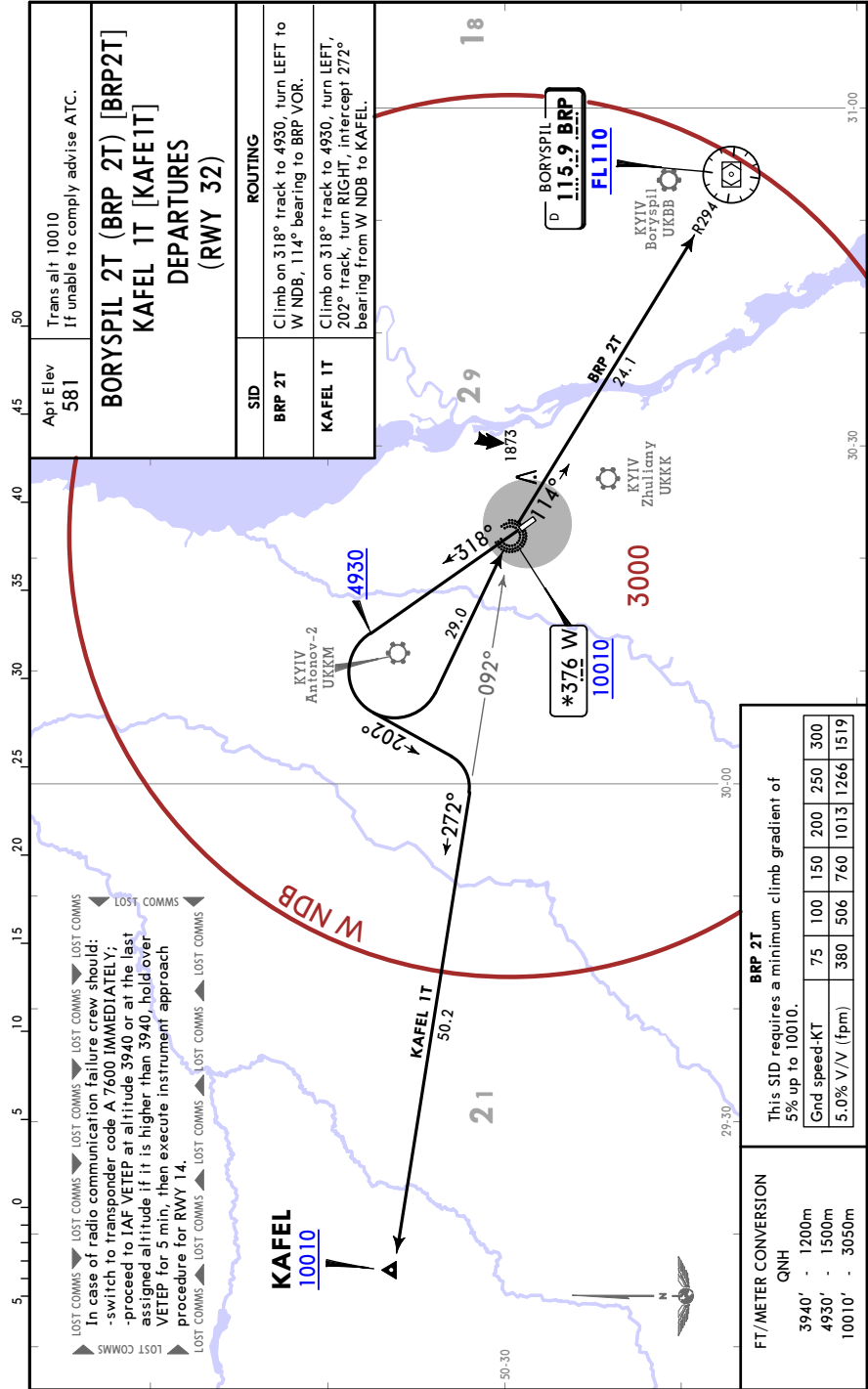
KYIV, UKRAINE  
STAR



CHANGES: STARs renumbered and revised, lost comms revised.

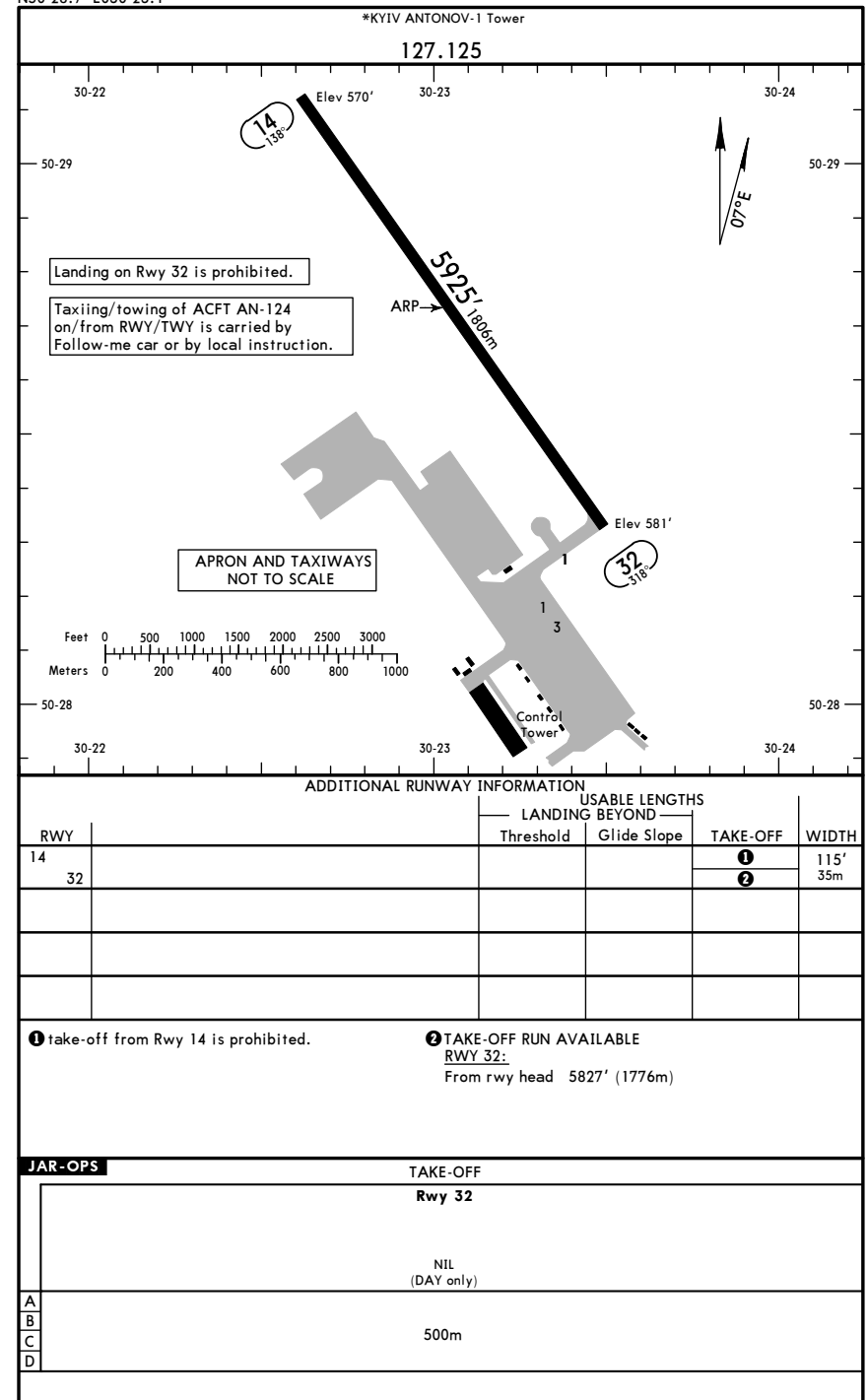
© JEPPESEN, 2018, 2019. ALL RIGHTS RESERVED.





CHANGES: SID KR 2T replaced by KAFE1T.

© JEPPESEN, 2018, 2019. ALL RIGHTS RESERVED.



CHANGES: Apt name. Rwy 32 elev. Note.

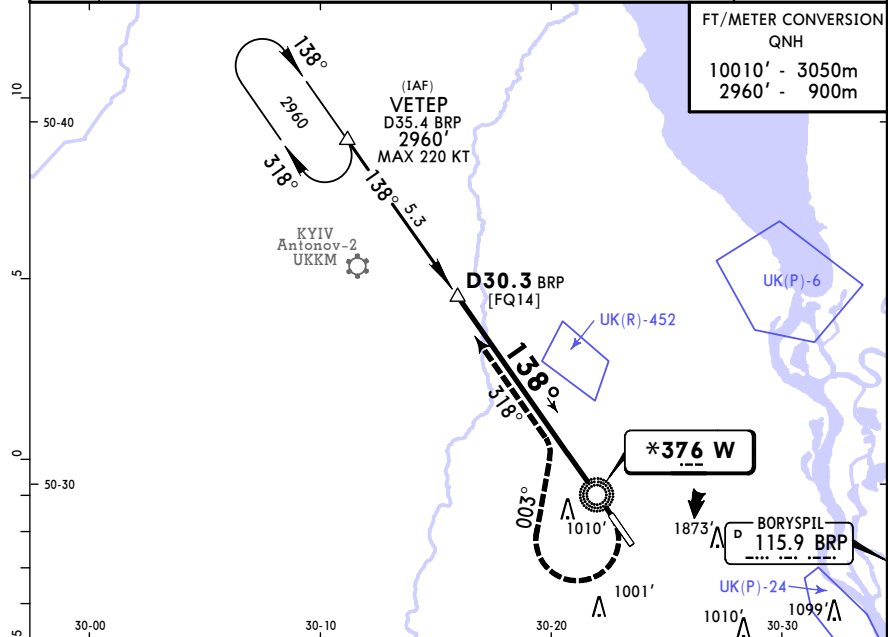
© JEPPESEN, 2018, 2020. ALL RIGHTS RESERVED.

UKKT  
ANTONOV-1 NATL

**JEPPESEN**  
10 MAY 19 (46-1) Eff 23 May

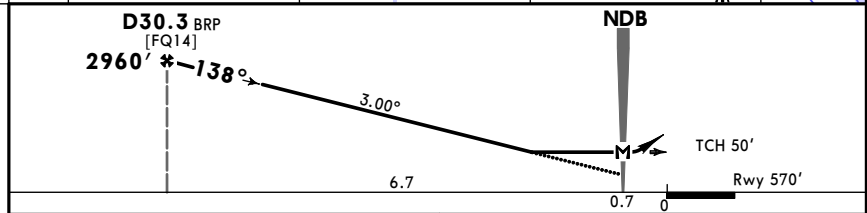
KYIV, UKRAINE  
NDB Rwy 14

KYIV Radar (APP) 127.725		125.3		*KYIV ANTONOV-1 Tower 127.125	
NDB W *376	Final Apch Crs 138°	Minimum Alt D30.3 BRP 2960' (2390')	MDA(H) 1190' (620')	Apt Elev 581' Rwy 570'	3000  MSA W NDB
<b>MISSED APCH:</b> Turn RIGHT on track 003°, then turn LEFT to intercept 318° from NDB climbing to 2960' to VETEP. Then according to chart.					
Alt Set: hPa		Rwy Elev: 21 hPa	Trans level: By ATC	Trans alt: 10010'	
DME required.					



FT/METER CONVERSION  
QNH

10010' - 3050m
2960' - 900m



Gnd speed-Kts	70	90	100	120	140	160
Descent Angle 3.00°	372	478	531	637	743	849

MAP at NDB

RT on hdg 003°

<b>JAR-OPS</b> STRAIGHT-IN LANDING RWY 14		CIRCLE-TO-LAND	
MDA(H) 1190' (620')			
A	RVR 1500m	A	NOT AUTHORIZED
B		B	
C	RVR 2000m	C	
D		D	

PANS OPS

CHANGES: Procedure revised.

© JEPPESEN, 2018, 2019. ALL RIGHTS RESERVED.