

List of pages in this Trip Kit

Trip Kit Index

Airport Information For UKKG

Terminal Charts For UKKG

Revision Letter For Cycle 10-2020

Change Notices

Notebook

General Information

Location: KIROVOHRAD UKR
ICAO/IATA: UKKG / KGO
Lat/Long: N48° 32.48', E032° 16.97'
Elevation: 571 ft

Airport Use: Public
Daylight Savings: Observed
UTC Conversion: -2:00 = UTC
Magnetic Variation: 7.0° E

Customs: No
Airport Type: IFR
Landing Fee: Yes
Control Tower: No
Jet Start Unit: No
LLWS Alert: No
Beacon: No

Sunrise: 0152 Z
Sunset: 1746 Z

Runway Information

Runway: 15L
Length x Width: 5249 ft x 262 ft
Surface Type: grass
TDZ-Elev: 541 ft

Runway: 15R
Length x Width: 4268 ft x 148 ft
Surface Type: asphalt
TDZ-Elev: 551 ft
Lighting: Edge, ALS

Runway: 33L
Length x Width: 4268 ft x 148 ft
Surface Type: asphalt
TDZ-Elev: 558 ft
Lighting: Edge

Runway: 33R
Length x Width: 5249 ft x 262 ft
Surface Type: grass
TDZ-Elev: 558 ft

Communication Information

Kyiv Information: 130.500 Flight Info Service RCO
Kirovohrad Information: 120.800 AFIS Non-English

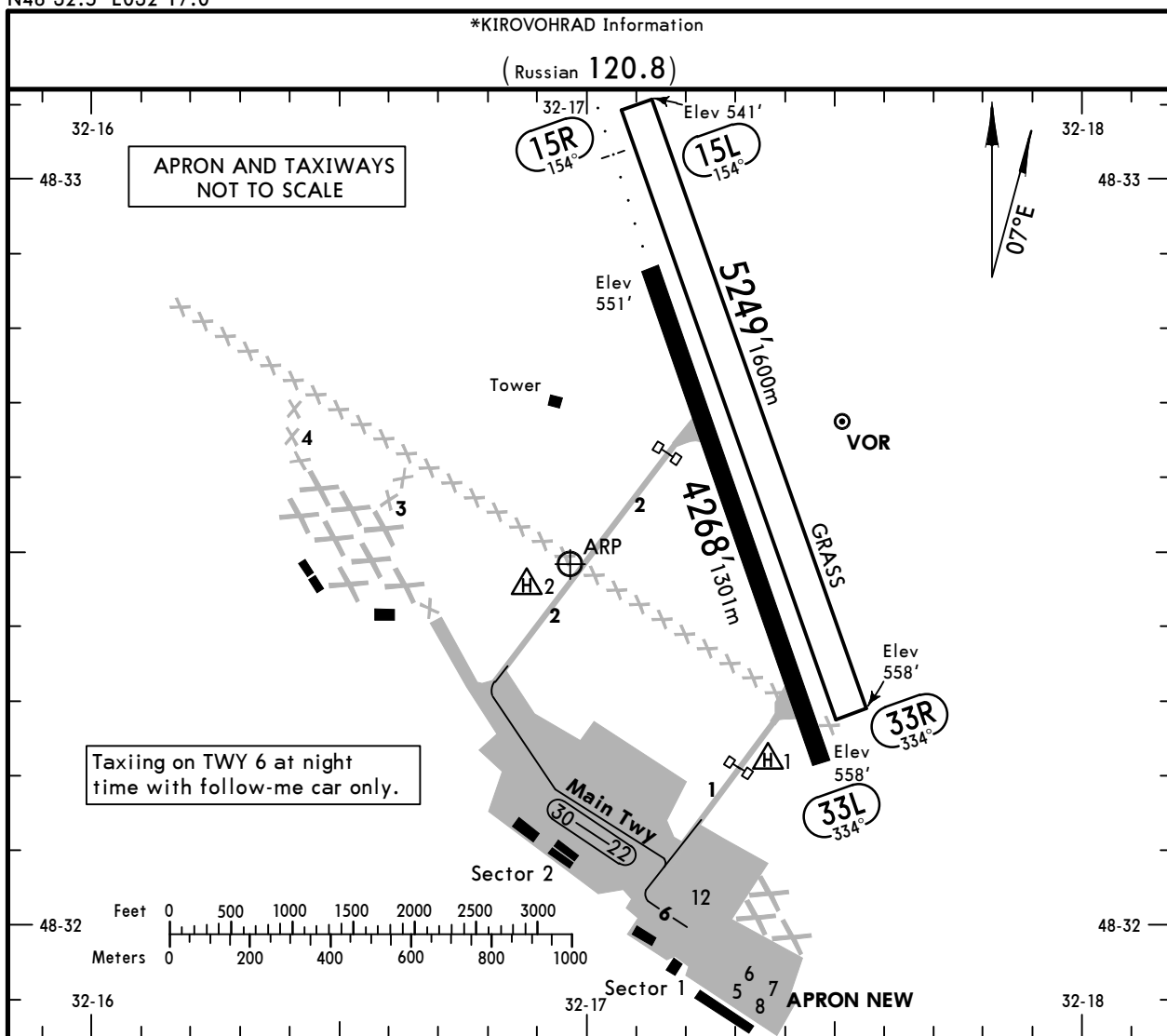
UKKG/KGO

Apt Elev **571'**
N48 32.5 E032 17.0

JEPPesen 15 MAY 20 **(10-9)** Eff 21 May

KIROVOHRAD, UKRAINE

KIROVOHRAD



ADDITIONAL RUNWAY INFORMATION

RWY		USABLE LENGTHS			
		Threshold	Landing Beyond Glide Slope	TAKE-OFF	WIDTH
15R	RL ALS PAPI-R (angle 3.0°)	①		②	148' 45m
33L	RL				
15L	Grass runway				262' 80m

① LDA 4252' (1296m)

② TAKE-OFF RUN AVAILABLE

RWY 15R:

From rwy head 4252' (1296m)

③ twy 2 int 2772' (845m)

RWY 33L:

From rwy head 4252' (1296m)

③ Only for ACFT Code 1

DEPARTURE PROCEDURES

RWY 15R: Climb on track 154° to 2470', turn LEFT climbing 4930' or above to KVH VOR/DME, then as directed by ATC. Minimum climb gradient 5% up to 4930'. Bank angle 20°. If unable, advise ATC.

RWY 33L: Climb on track 334° to 2470', turn LEFT climbing 4930' or above to KVH VOR/DME, then as directed by ATC. Minimum climb gradient 5% up to 4930'. Bank angle 20°. If unable, advise ATC.

ARRIVAL PROCEDURES

RWY 15R/33L: From waypoints GODOD, KOSNA, MIMKO proceed to IAF KVH VOR/DME, then according to apch chart. Cross IAF KVH VOR/DME at 4930' or above.

JAR-OPS

TAKE-OFF ①

	LVP must be in force RCLM (DAY only) or RL	All Rwys RCLM (DAY only) or RL	NIL (DAY only)
A			
B	250m	400m	500m
C			
D	300m		

① Operators applying U.S. Ops Specs: CL required below 300m.

UKKG/KGO
KIROVOHRAD

JEPPesen

KIROVOHRAD, UKRAINE
VOR Rwy 15R

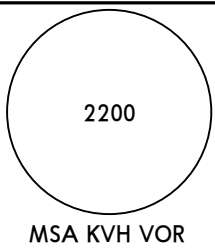
15 MAY 20 (13-1) Eff 21 May

*KIROVOHRAD Information

(Russian 120.8)

BRIEFING STRIP™

VOR KVH 114.9	Final Apch Crs 145°	D5.1 MANDATORY 2140' (1589')	MDA(H) 970' (419')	Apt Elev 571' Rwy 551'
-------------------------	-------------------------------	--	------------------------------	---------------------------------

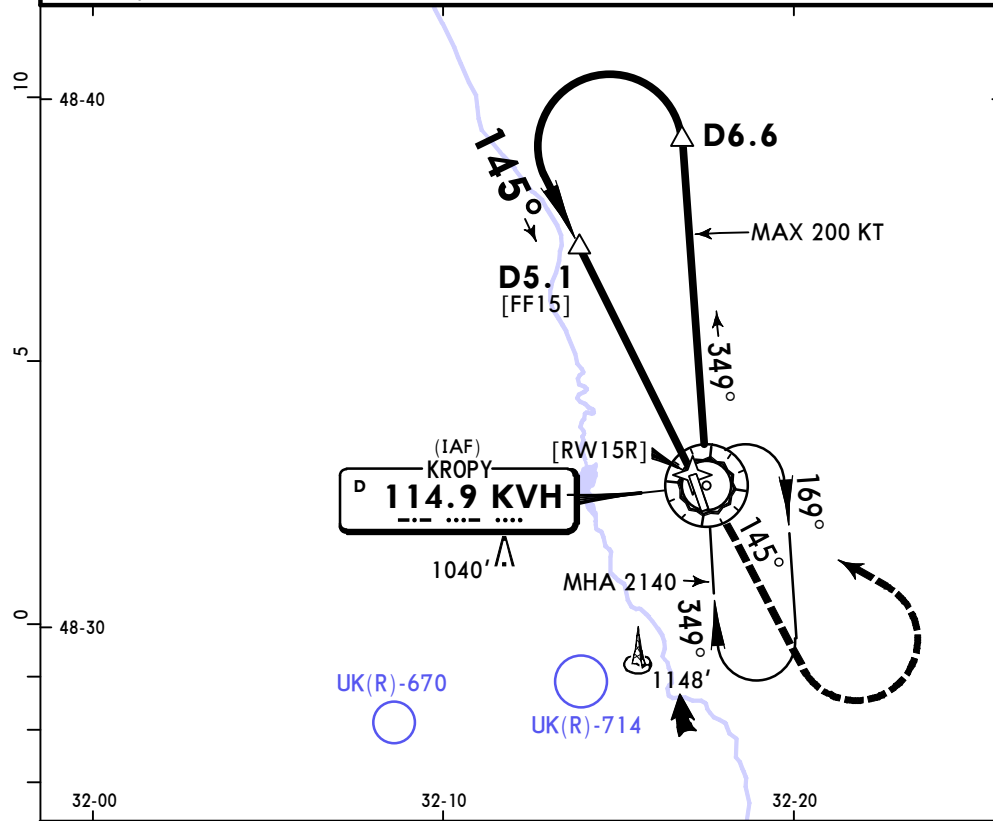


MISSED APCH: Climb on 145° to 1810', then turn LEFT to VOR climbing 2140', then according to chart. MAX 240 KT

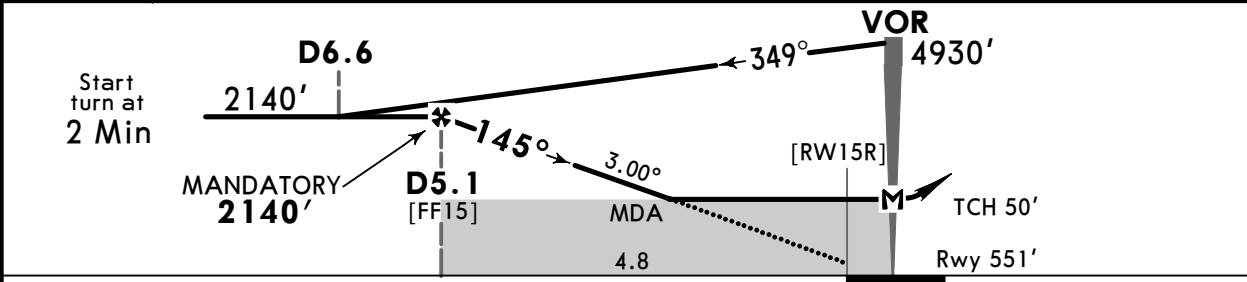
Alt Set: hPa Rwy Elev: 20 hPa Trans level: By ATC Trans alt: 10010'
DME required.

FT/METER CONVERSION
QNH

10010'	3050m
4930'	1500m
2140'	650m
1810'	550m



KVH DME	4.9	3.8	2.7	1.6
ALTITUDE	2060'	1710'	1380'	1040'



Gnd speed-Kts	70	90	100	120	140	160
Descent Angle 3.00°	372	478	531	637	743	849
MAP at VOR						
D5.1 to MAP	5.1	4:22	3:24	3:04	2:33	2:11

ALS PAPI **240 KT** **1810'** on **145°**
MAX

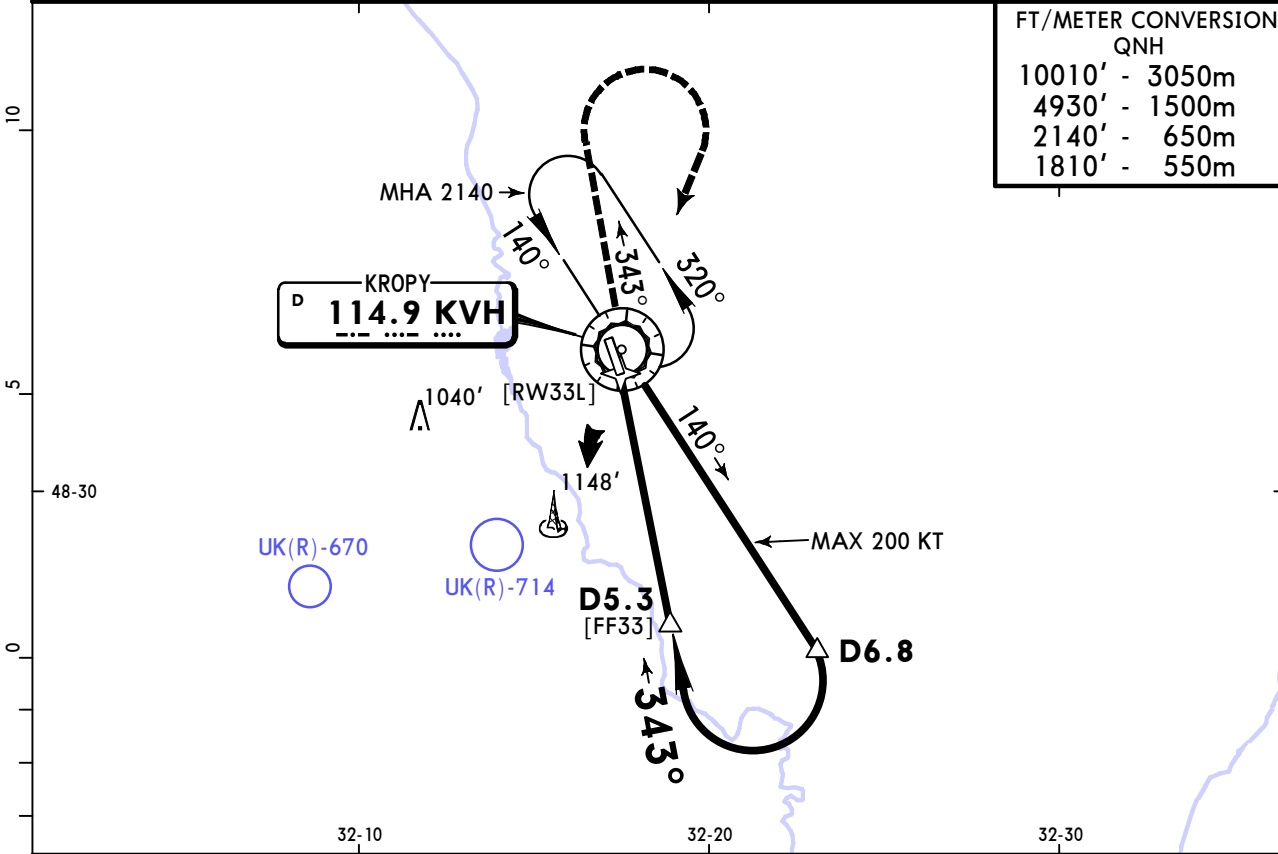
PANS OPS	JAR-OPS STRAIGHT-IN LANDING RWY 15R		CIRCLE-TO-LAND	
	MDA(H) 970' (419')	ALS out	Max Kts	MDA(H) VIS
A	RVR 1300m	RVR 1500m	100	1040' (469') 1500m
B	RVR 1400m	RVR 1500m	135	1120' (549') 1600m
C	RVR 1600m	RVR 1800m	180	1480' (909') 2400m
D	RVR 1800m	RVR 2000m	205	1480' (909') 3600m

UKKG/KGO
KIROVOHRAD

JEPPESEN
15 MAY 20 **(13-2)** Eff 21 May

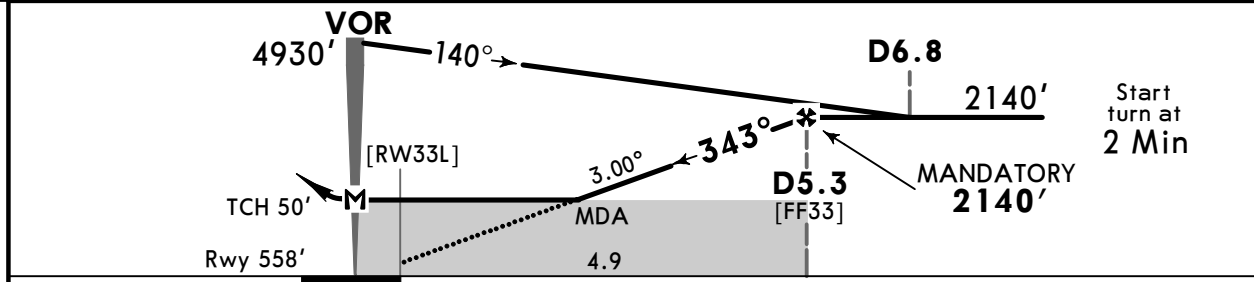
KIROVOHRAD, UKRAINE
VOR Rwy 33L

*KIROVOHRAD Information					<div style="border: 1px solid black; border-radius: 50%; width: 100px; height: 100px; margin: 0 auto; display: flex; align-items: center; justify-content: center;">2200</div> <p>MSA KVH VOR</p>
(Russian 120.8)					
VOR KVH 114.9	Final Apch Crs 343°	D5.3 MANDATORY 2140' (1582')	MDA(H) Refer to Minimums	Apt Elev 571' Rwy 558'	
MISSED APCH: Climb on 343° to 1810', then turn RIGHT to VOR climbing 2140', then according to chart. MAX 240 KT					
Alt Set: hPa		Rwy Elev: 20 hPa		Trans level: By ATC	
DME required.					Trans alt: 10010'



FT/METER CONVERSION	
QNH	
10010'	3050m
4930'	1500m
2140'	650m
1810'	550m

KVH DME	4.9	3.8	2.7	1.6
ALTITUDE	2020'	1680'	1330'	990'



Gnd speed-Kts	70	90	100	120	140	160	240 KT MAX	1810' ↑ on 145°	
Descent Angle	3.00°	372	478	531	637	743			849
MAP at VOR									
D5.3 to MAP	5.3	4:33	3:32	3:11	2:39	2:16	1:59		

JAR-OPS STRAIGHT-IN LANDING RWY 33L				CIRCLE-TO-LAND					
MDA(H)		C: 970' (412')		Max Kts		MDA(H)		VIS	
AB: 940' (382')		D: 990' (432')							
A		RVR 1500m		100	1040' (469')	1500m			
B		RVR 1800m		135	1120' (549')	1600m			
C		RVR 2000m		180	1480' (909')	2400m			
D		RVR 2000m		205	1480' (909')	3600m			

PANS OPS

Chart changes since cycle 09-2020

ADD = added chart, REV = revised chart, DEL = deleted chart.

ACT	PROCEDURE IDENT	INDEX	REV DATE	EFF DATE
KIROVOHRAD, (KIROVOHRAD - UKKG)				
DEL	GODOD, KOSNA & MIMKO 2K A...	10-2	08 May 2020	21 May 2020
DEL	GODOD, KOSNA & MIMKO 2L A...	10-2A	08 May 2020	21 May 2020
DEL	GODOD, KOSNA & MIMKO 2F D...	10-3	08 May 2020	21 May 2020
DEL	GODOD, KOSNA & MIMKO 2G D...	10-3A	08 May 2020	21 May 2020
REV	AIRPORT, PARKING, AIRPORT...	10-9	15 May 2020	21 May 2020
DEL	VOR RWY 15	13-1	15 May 2020	21 May 2020
ADD	VOR RWY 15R	13-1	15 May 2020	21 May 2020
DEL	VOR RWY 33	13-2	15 May 2020	21 May 2020
ADD	VOR RWY 33L	13-2	15 May 2020	21 May 2020

TERMINAL CHART CHANGE NOTICES

No Chart Change Notices for Airport UKKG