

List of pages in this Trip Kit

Trip Kit Index

Airport Information For UKDE

Terminal Charts For UKDE

Revision Letter For Cycle 10-2020

Change Notices

Notebook

General Information

Location: ZAPORIZHZHIA UKR
ICAO/IATA: UKDE / OZH
Lat/Long: N47° 52.03', E035° 18.90'
Elevation: 374 ft

Airport Use: Public
Daylight Savings: Observed
UTC Conversion: -2:00 = UTC
Magnetic Variation: 7.0° E

Fuel Types: Jet A-1
Repair Types: Minor Airframe, Minor Engine
Customs: Yes
Airport Type: IFR
Landing Fee: Yes
Control Tower: Yes
Jet Start Unit: No
LLWS Alert: No
Beacon: No

Sunrise: 0143 Z
Sunset: 1731 Z

Runway Information

Runway: 02R
Length x Width: 8202 ft x 138 ft
Surface Type: concrete
TDZ-Elev: 339 ft
Lighting: Edge, ALS

Runway: 20L
Length x Width: 8202 ft x 138 ft
Surface Type: concrete
TDZ-Elev: 373 ft
Lighting: Edge, ALS

Runway: 02L
Length x Width: 6890 ft x 279 ft
Surface Type: grass
TDZ-Elev: 349 ft
Lighting: Edge

Runway: 20R
Length x Width: 6890 ft x 279 ft
Surface Type: grass
TDZ-Elev: 369 ft
Lighting: Edge

Communication Information

Zaporizhzhia Tower: 126.050 Secondary

Zaporizhzhia Tower: 120.050

Zaporizhzhia Radar: 119.200

UKDE/OZH ZAPORIZHZHIA INTL



ZAPORIZHZHIA, UKRAINE

1 DEC 17

10-1R

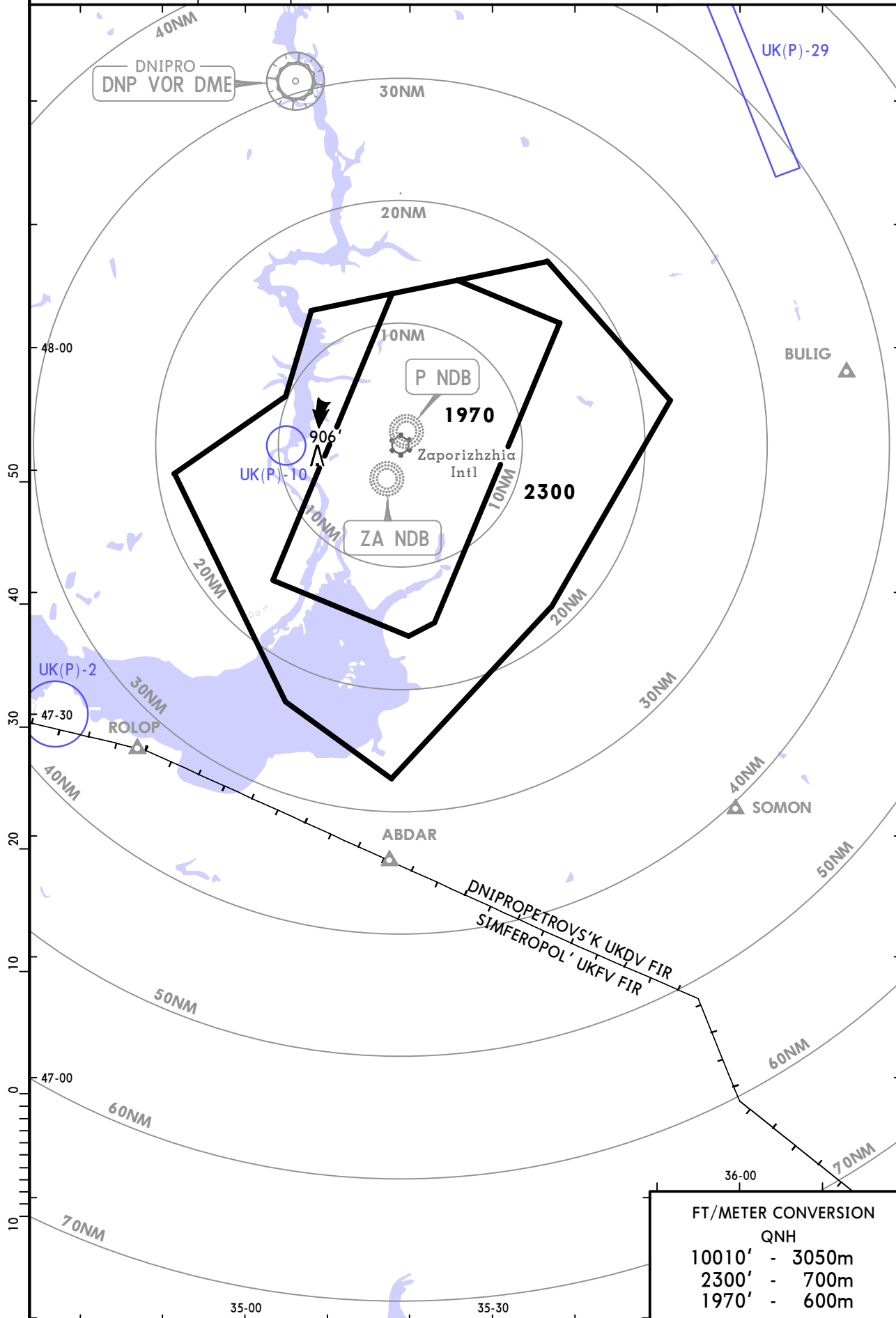
Eff 7 Dec

RADAR MINIMUM ALTITUDES

ZAPORIZHZHIA
Radar (APP)
119.2

Apt Elev
374'

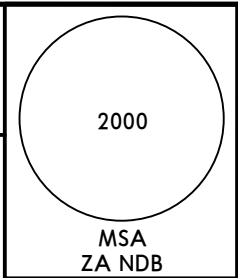
Alt Set: hPa
Trans level: By ATC Trans alt: 10010'
1. This chart may only be used for cross-checking of altitudes assigned while the aircraft identified.
2. MRVA are safe if the temperature at the surface is 4°C or above. For lower temperatures, corrected minimum levels will be provided by ATC.



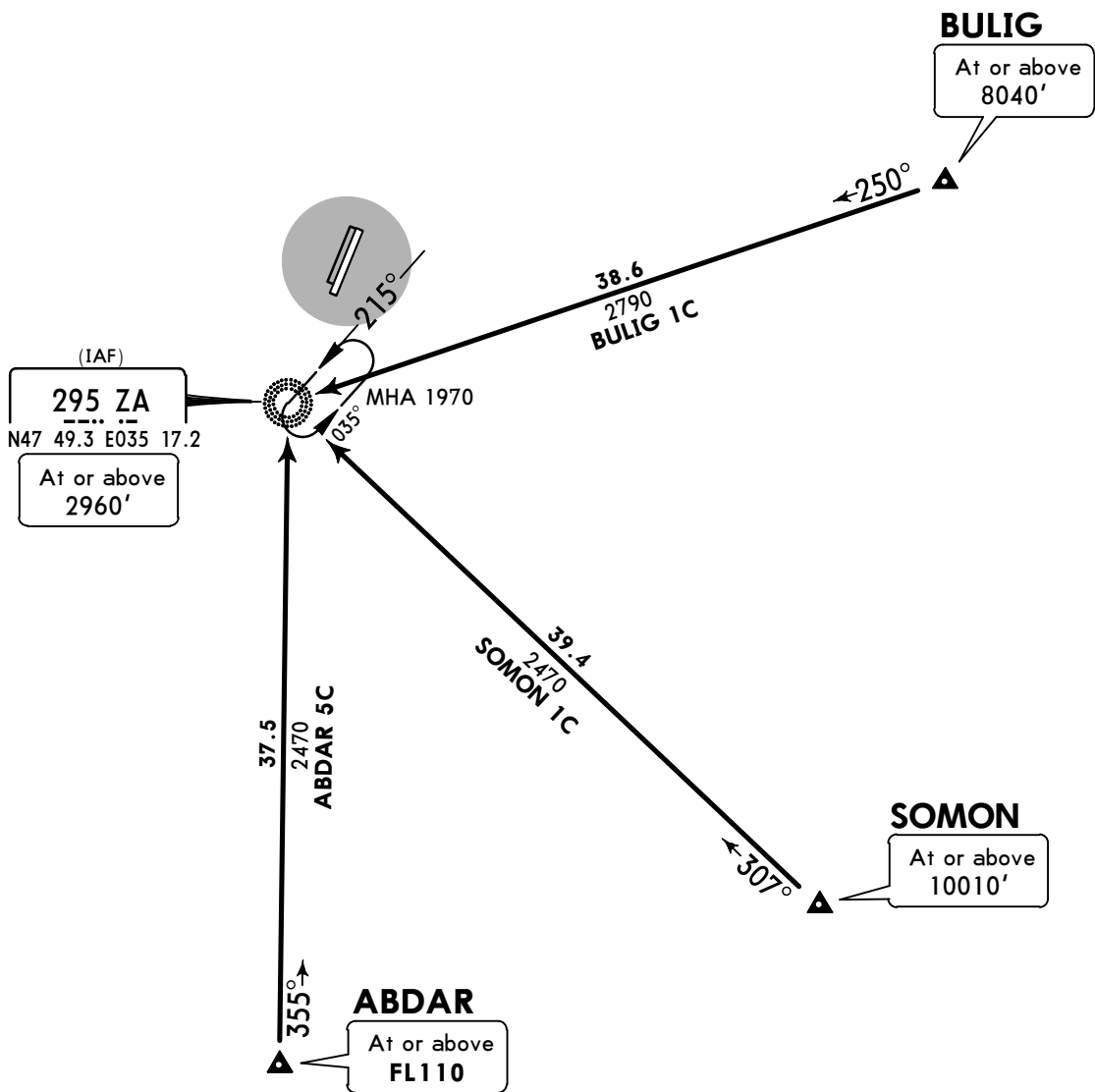
FT/METER CONVERSION	
QNH	
10010'	- 3050m
2300'	- 700m
1970'	- 600m

UKDE/OZH
ZAPORIZHZHIA INTL

Apt Elev **374'**
 Alt Set: hPa
 Trans level: By ATC Trans alt: 10010'
 Due to noise abatement: flights over the city are prohibited and strict adherence to exit patterns by crews is required.



ABDAR 5C [ABDA5C]
BULIG 1C [BULI1C]
SOMON 1C [SOM01C]
RWY 02L/R ARRIVALS



FT/METER CONVERSION	
QNH	
10010'	- 3050m
8040'	- 2450m
2960'	- 900m
2470'	- 750m
1970'	- 600m

STAR	ROUTING
ABDAR 5C	On 355° bearing to ZA NDB.
BULIG 1C	On 250° bearing to ZA NDB.
SOMON 1C	On 307° bearing to ZA NDB.

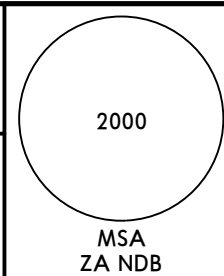
UKDE/OZH
ZAPORIZHZHIA INTL

JEPPESSEN 17 MAY 19 **10-2A** Eff 23 May

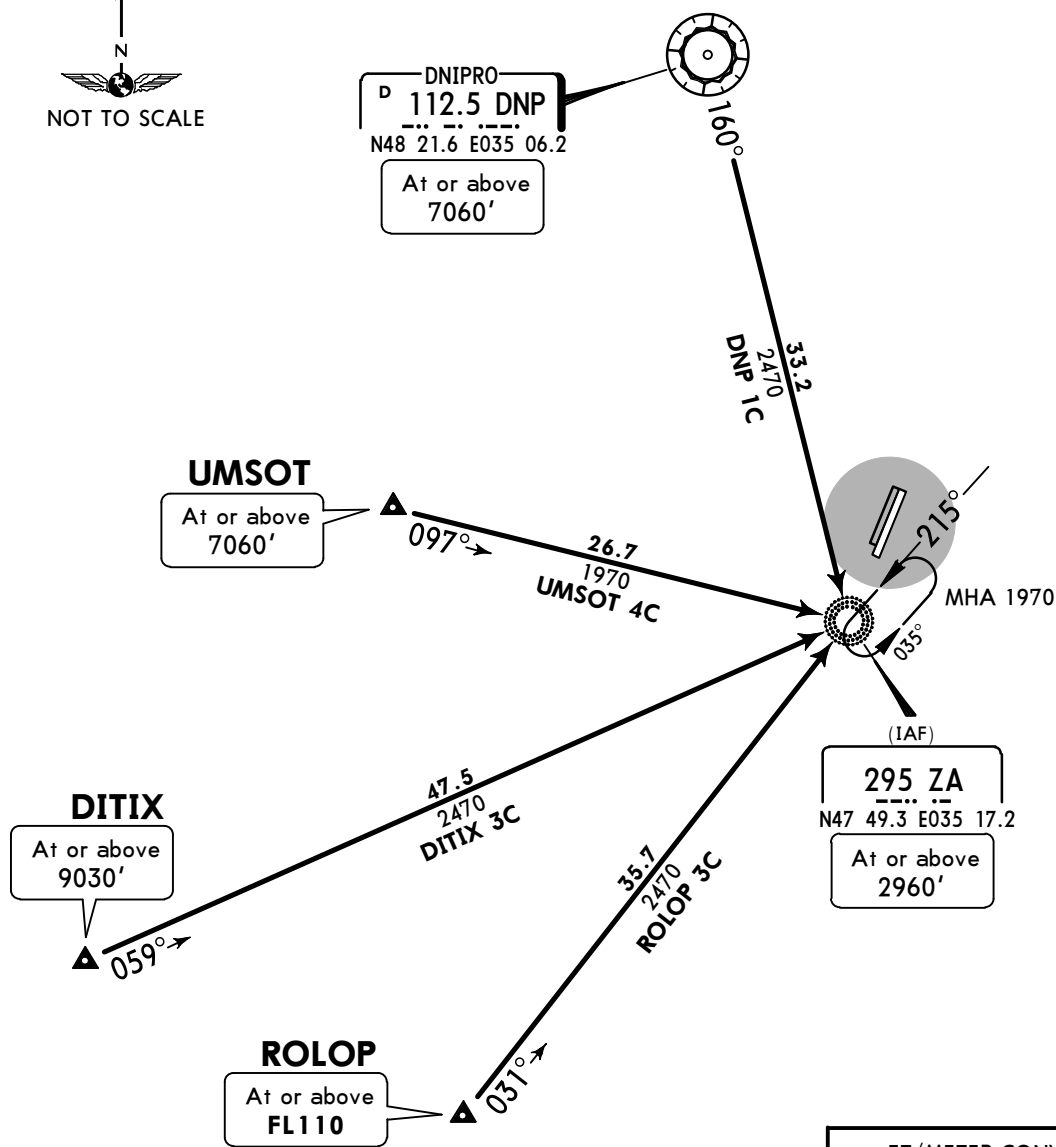
ZAPORIZHZHIA, UKRAINE

STAR

Apt Elev **374'**
 Alt Set: hPa
 Trans level: By ATC Trans alt: 10010'
 Due to noise abatement: flights over the city are prohibited and strict adherence to exit patterns by crews is required.



DITIX 3C [DITI3C]
DNIPRO 1C (DNP 1C) [DNP1C]
ROLOP 3C [ROLO3C]
UMSOT 4C [UMSO4C]
RWY 02L/R ARRIVALS

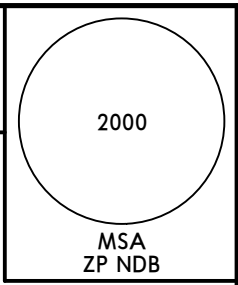


FT/METER CONVERSION	
QNH	
10010'	- 3050m
9030'	- 2750m
7060'	- 2150m
2960'	- 900m
2470'	- 750m
1970'	- 600m

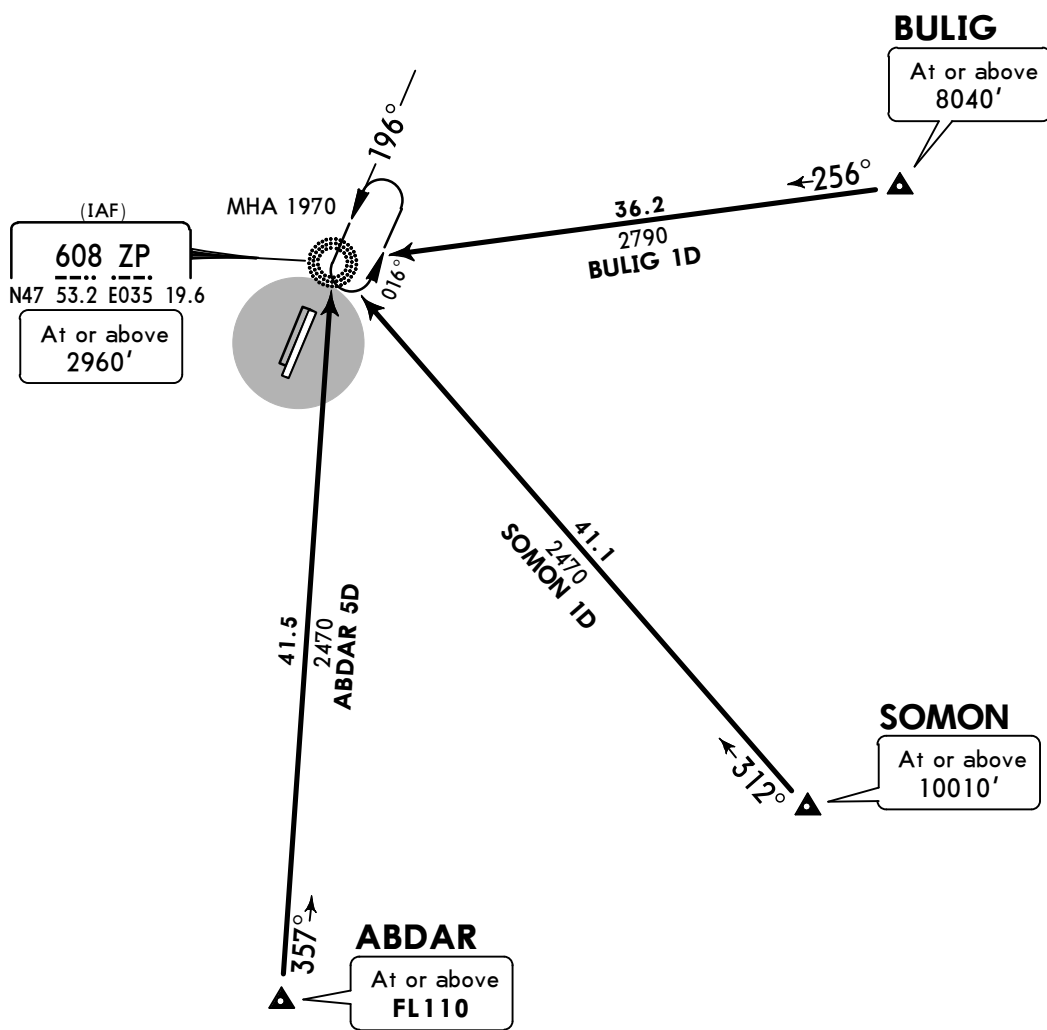
STAR	ROUTING
DITIX 3C	On 059° bearing to ZA NDB.
DNP 1C	On DNP R-160 to ZA NDB.
ROLOP 3C	On 031° bearing to ZA NDB.
UMSOT 4C	On 097° bearing to ZA NDB.

UKDE/OZH
ZAPORIZHZHIA INTL

Apt Elev **374'**
 Alt Set: hPa
 Trans level: By ATC Trans alt: 10010'
 Due to noise abatement: flights over the city are prohibited and strict adherence to exit patterns by crews is required.



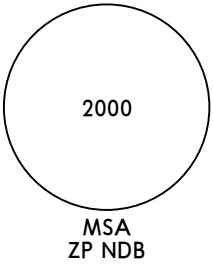
ABDAR 5D [ABDA5D]
BULIG 1D [BULI1D]
SOMON 1D [SOMO1D]
RWY 20L/R ARRIVALS



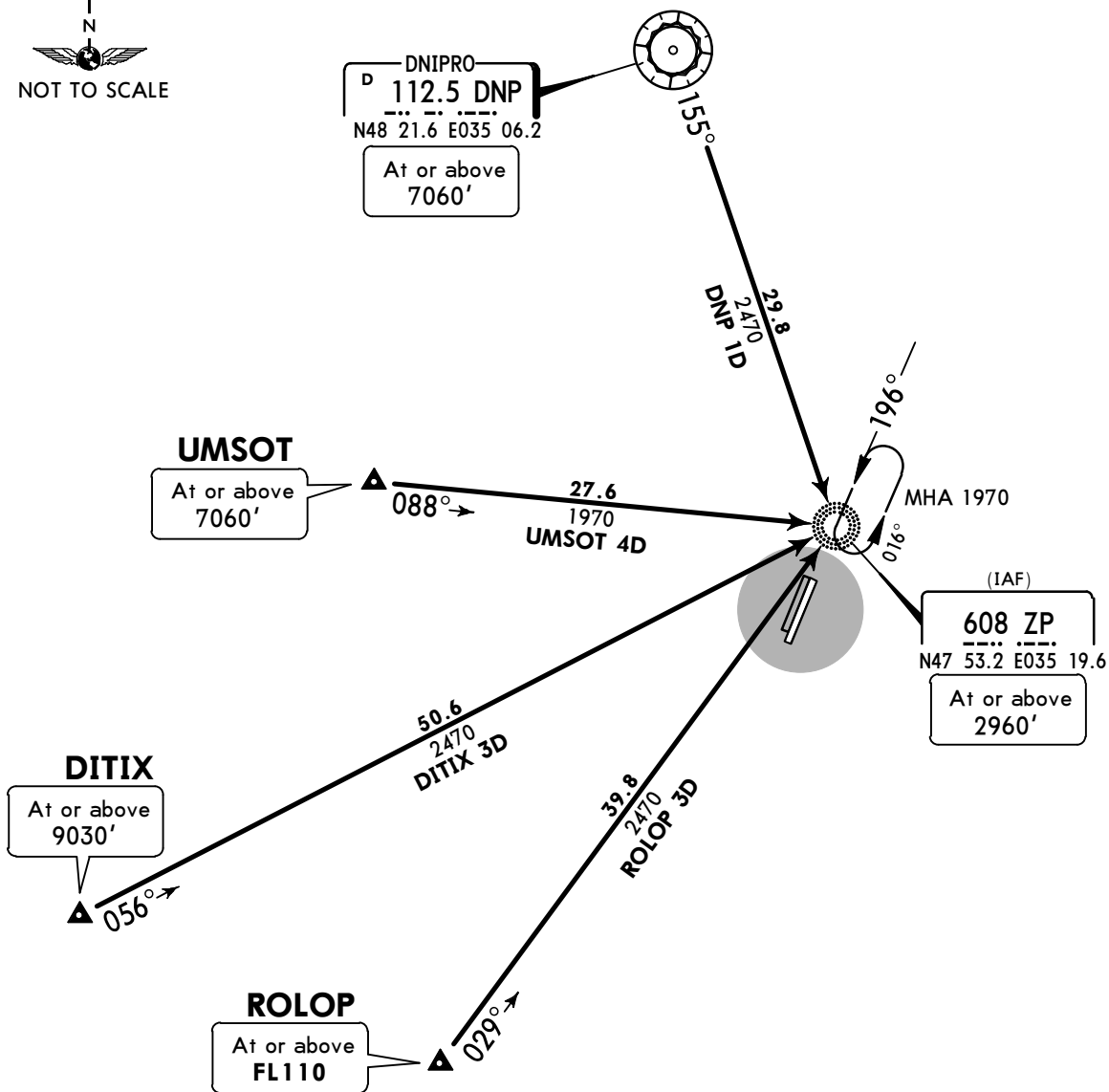
FT/METER CONVERSION	
QNH	
10010'	- 3050m
8040'	- 2450m
2960'	- 900m
2470'	- 750m
1970'	- 600m

STAR	ROUTING
ABDAR 5D	On 357° bearing to ZP NDB.
BULIG 1D	On 256° bearing to ZP NDB.
SOMON 1D	On 312° bearing to ZP NDB.

UKDE/OZH
ZAPORIZHZHIA INTL

Apt Elev 374'	Alt Set: hPa Trans level: By ATC Trans alt: 10010' Due to noise abatement: flights over the city are prohibited and strict adherence to exit patterns by crews is required.	
-------------------------	---	---

DITIX 3D [DITI3D]
DNIPRO 1D (DNP 1D) [DNP1D]
ROLOP 3D [ROLO3D]
UMSOT 4D [UMSO4D]
RWY 20L/R ARRIVALS



FT/METER CONVERSION	
QNH	
10010'	- 3050m
9030'	- 2750m
7060'	- 2150m
2960'	- 900m
2470'	- 750m
1970'	- 600m

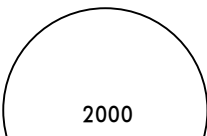
STAR	ROUTING
DITIX 3D	On 056° bearing to ZP NDB.
DNP 1D	On DNP R-155 to ZP NDB.
ROLOP 3D	On 029° bearing to ZP NDB.
UMSOT 4D	On 088° bearing to ZP NDB.

UKDE/OZH
ZAPORIZHZHIA INTL

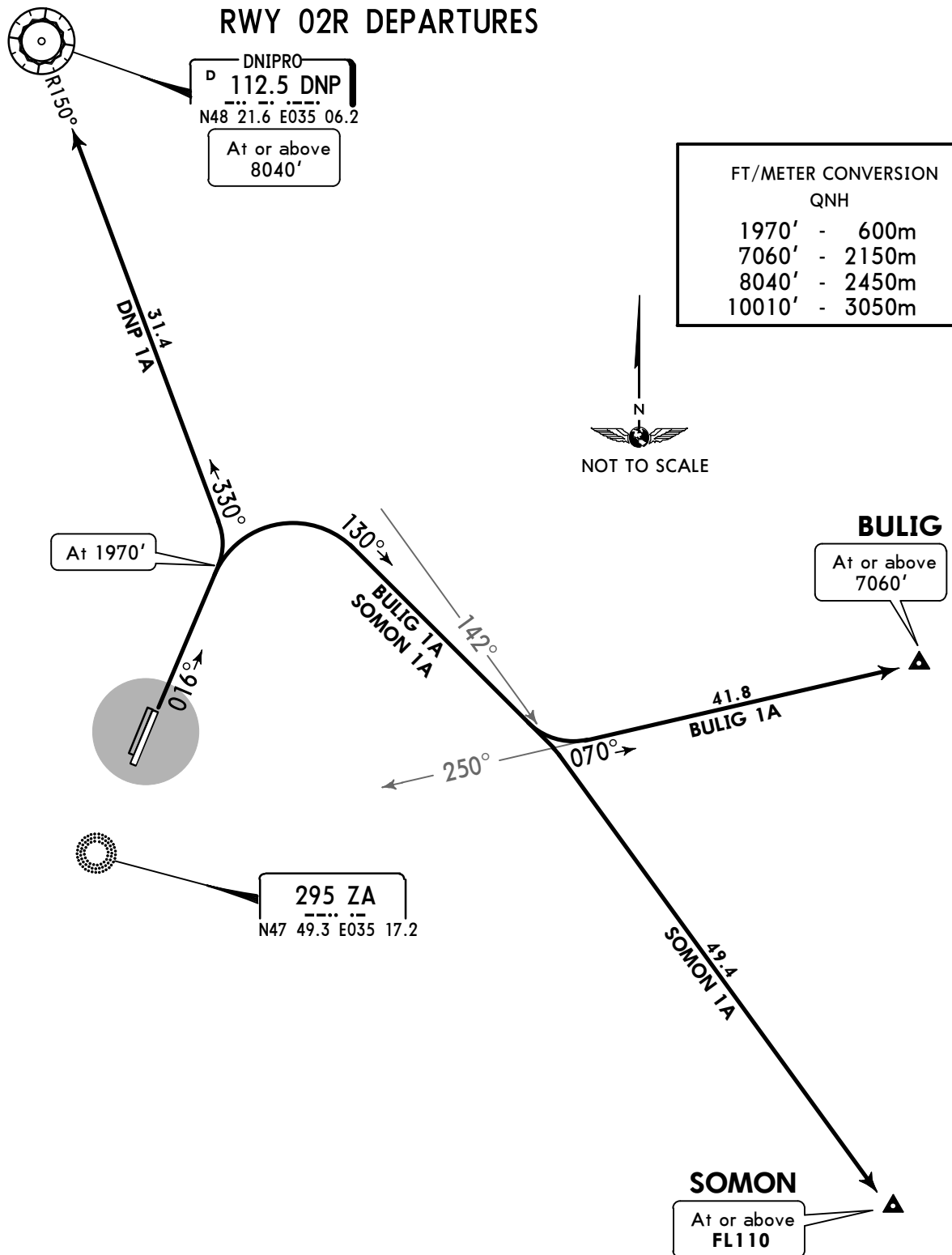
JEPPESEN
 17 MAY 19 **10-3** **Eff 23 May**

ZAPORIZHZHIA, UKRAINE

SID

Apt Elev 374'	Trans level: By ATC Trans alt: 10010' 1. EXPECT close-in obstacles. 2. Due to noise abatement: flights over the city are prohibited and strict adherence to entry patterns by crews is required.	
-------------------------	--	---

BULIG 1A [BULI1A]
DNIPRO 1A (DNP 1A) [DNP1A]
SOMON 1A [SOM01A]
RWY 02R DEPARTURES



FT/METER CONVERSION	
QNH	
1970'	- 600m
7060'	- 2150m
8040'	- 2450m
10010'	- 3050m

SID	ROUTING
BULIG 1A	Climb on 016° track to 1970', turn RIGHT, 130° track, turn LEFT to intercept 070° bearing from ZA NDB to BULIG.
DNP 1A	Climb on 016° track to 1970', turn LEFT to intercept DNP R-150 inbound to DNP VOR.
SOMON 1A	Climb on 016° track to 1970', turn RIGHT, 130° track, turn RIGHT to intercept DNP R-142 to SOMON.

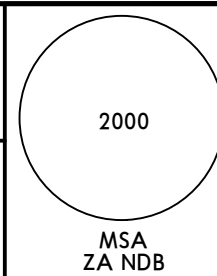
UKDE/OZH
ZAPORIZHZHIA INTL

JEPPESEN ZAPORIZHZHIA, UKRAINE
 17 MAY 19 **10-3A** Eff 23 May

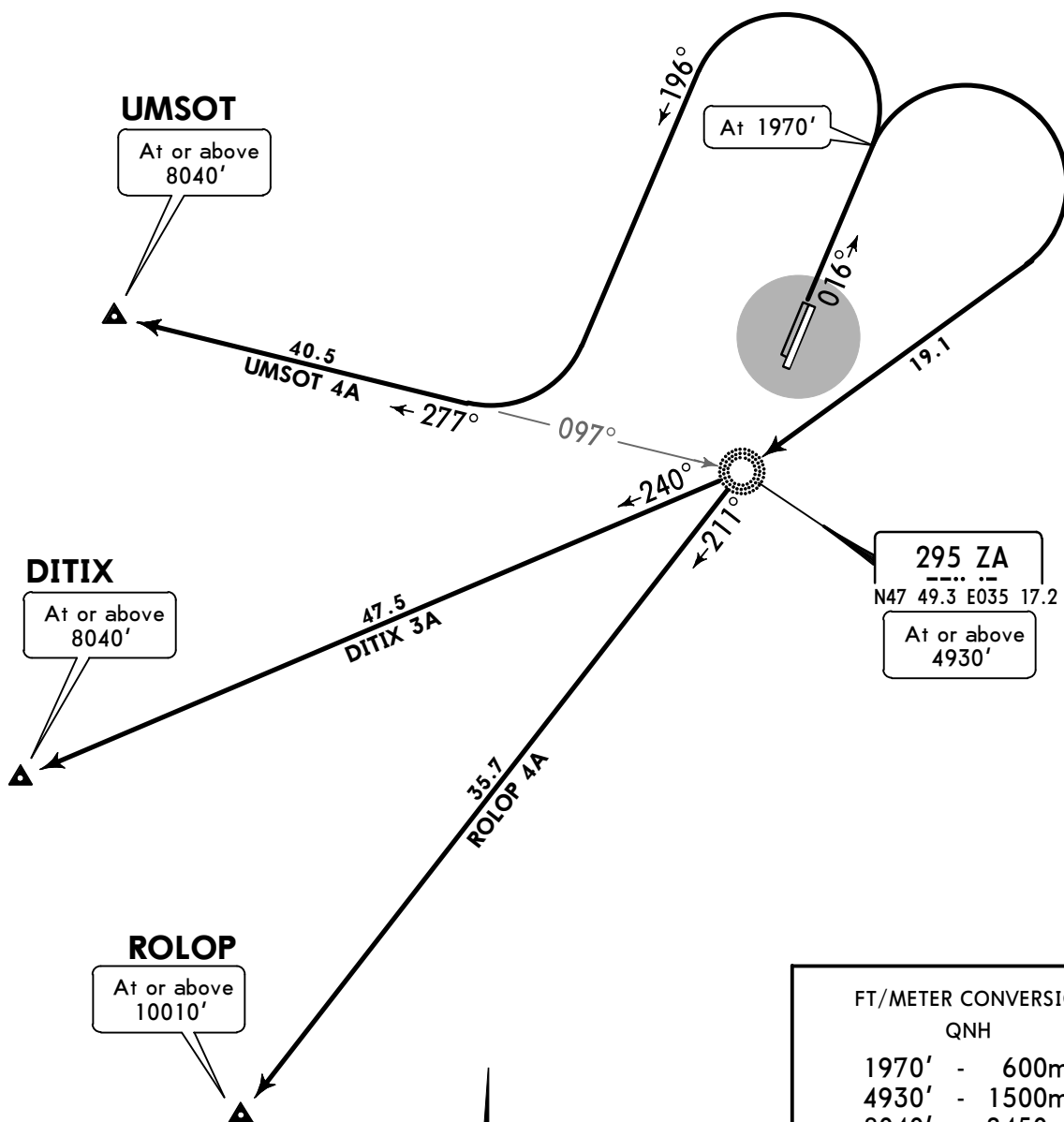
SID

Apt Elev
374'

Trans level: By ATC Trans alt: 10010'
 1. EXPECT close-in obstacles.
 2. Due to noise abatement: flights over the city are prohibited and strict adherence to entry patterns by crews is required.



DITIX 3A [DITI3A]
ROLOP 4A [ROLO4A]
UMSOT 4A [UMSO4A]
RWY 02R DEPARTURES



295 ZA
 N47 49.3 E035 17.2
 At or above 4930'

FT/METER CONVERSION	
QNH	
1970'	- 600m
4930'	- 1500m
8040'	- 2450m
10010'	- 3050m



SID	ROUTING
DITIX 3A	Climb on 016° track to 1970', turn RIGHT to ZA NDB, turn RIGHT, 240° bearing from ZA NDB to DITIX.
ROLOP 4A	Climb on 016° track to 1970', turn RIGHT to ZA NDB, turn LEFT, 211° bearing from ZA NDB to ROLOP.
UMSOT 4A	Climb on 016° track to 1970', turn LEFT, track 196°, turn RIGHT to intercept 277° bearing from ZA NDB to UMSOT.

UKDE/OZH
ZAPORIZHZHIA INTL

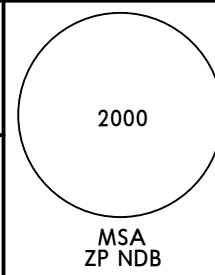
JEPPESEN 17 MAY 19 **10-3B** Eff 23 May

ZAPORIZHZHIA, UKRAINE

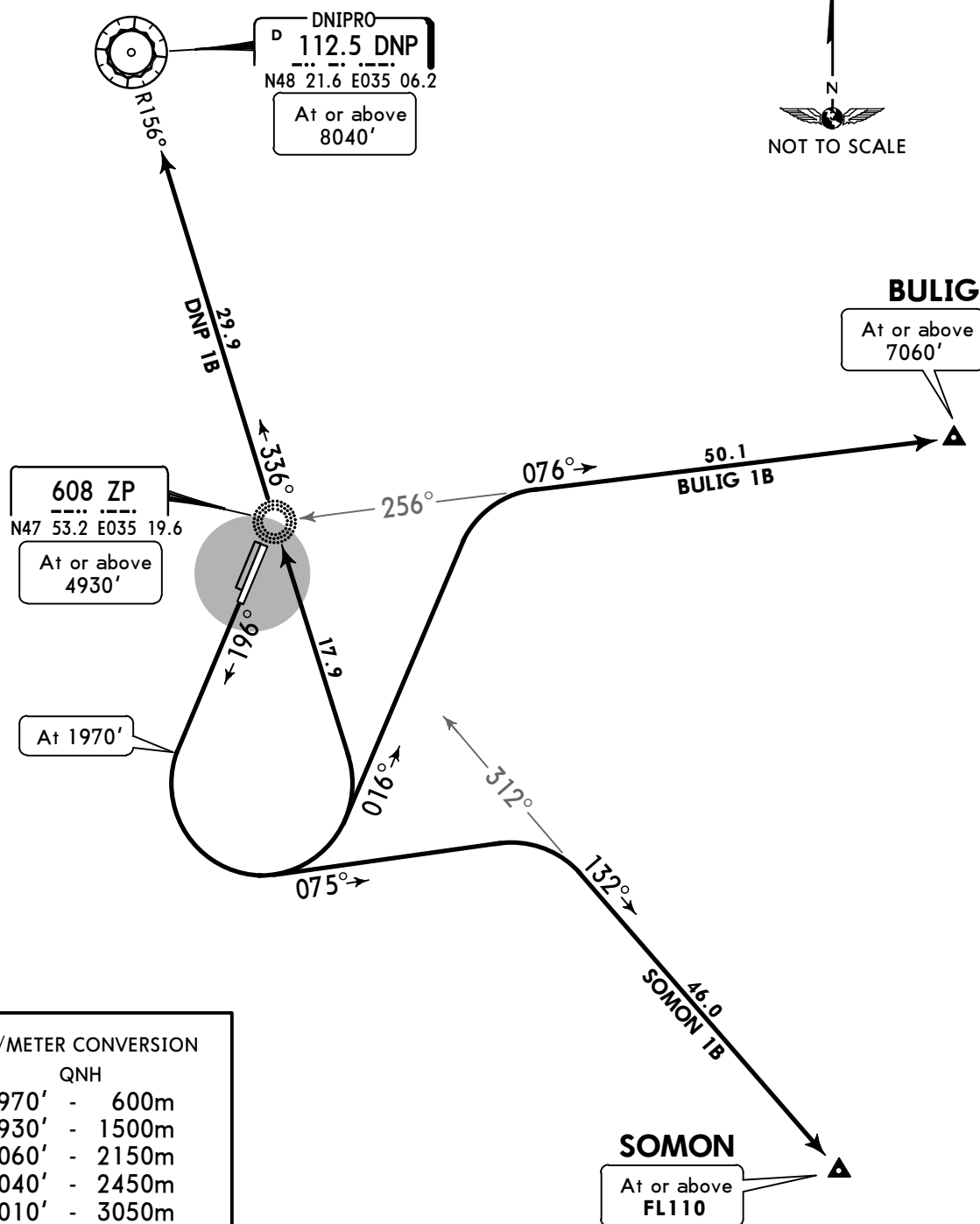
SID

Apt Elev
374'

Trans level: By ATC Trans alt: 10010'
 1. EXPECT close-in obstacles.
 2. Due to noise abatement: flights over the city are prohibited and strict adherence to entry patterns by crews is required.



BULIG 1B [BULI1B]
DNIPRO 1B (DNP 1B) [DNP1B]
SOMON 1B [SOMO1B]
RWY 20L DEPARTURES



FT/METER CONVERSION	
QNH	
1970'	- 600m
4930'	- 1500m
7060'	- 2150m
8040'	- 2450m
10010'	- 3050m

SID	ROUTING
BULIG 1B	Climb on 196° track to 1970', turn LEFT, 016° track, turn RIGHT to intercept 076° bearing from ZP NDB to BULIG.
DNP 1B	Climb on 196° track to 1970', turn LEFT to ZP NDB, intercept DNP R-156 inbound to DNP VOR.
SOMON 1B	Climb on 196° track to 1970', turn LEFT, 075° track, turn RIGHT to intercept 132° bearing from ZP NDB to SOMON.

UKDE/OZH
ZAPORIZHZHIA INTL

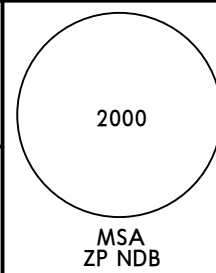
JEPPESEN 17 MAY 19 **10-3C** Eff 23 May

ZAPORIZHZHIA, UKRAINE

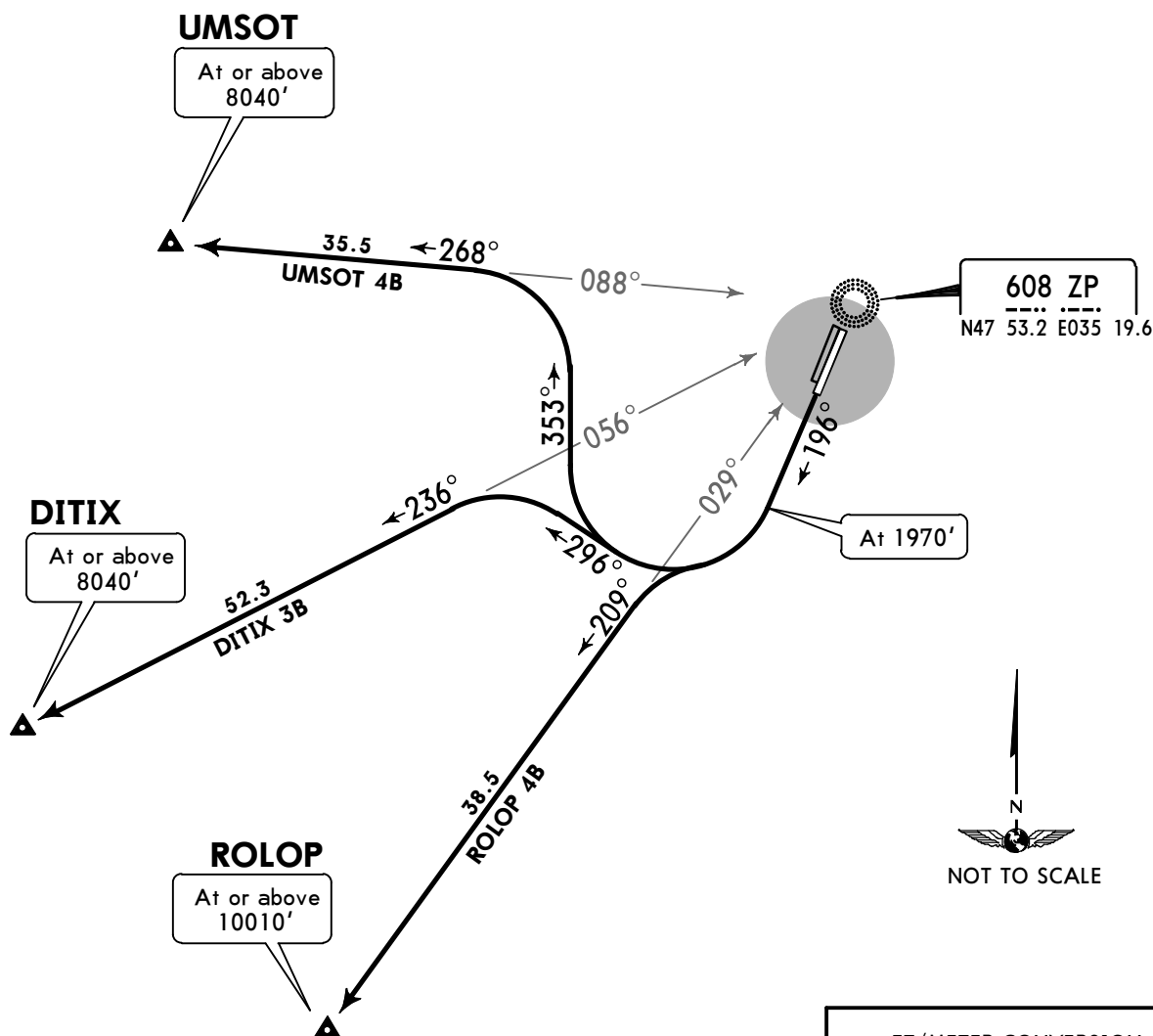
SID

Apt Elev
374'

Trans level: By ATC Trans alt: 10010'
 1. EXPECT close-in obstacles.
 2. Due to noise abatement: flights over the city are prohibited and strict adherence to entry patterns by crews is required.



DITIX 3B [DITI3B]
ROLOP 4B [ROLO4B]
UMSOT 4B [UMSO4B]
RWY 20L DEPARTURES

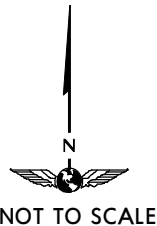


DITIX
 At or above
 8040'

UMSOT
 At or above
 8040'

ROLOP
 At or above
 10010'

608 ZP
 N47 53.2 E035 19.6



FT/METER CONVERSION
 QNH

1970'	-	600m
4930'	-	1500m
8040'	-	2450m
10010'	-	3050m

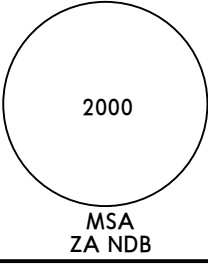
DITIX 3B, UMSOT 4B
 These SIDs require a minimum climb gradient of 7.0% up to 4930'.

Gnd speed-KT	75	100	150	200	250	300
7.0% V/V (fpm)	532	709	1063	1418	1772	2127

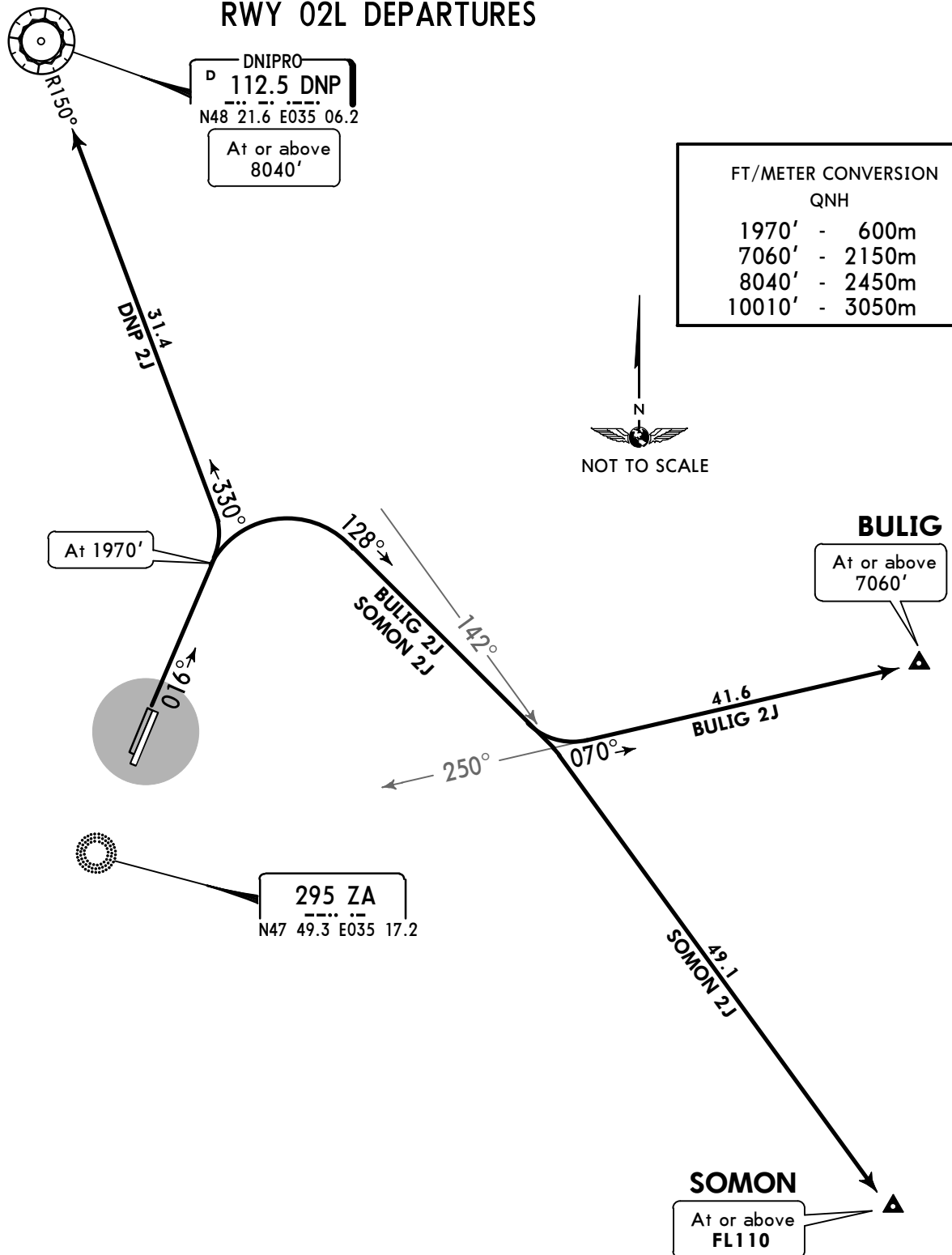
SID	ROUTING
DITIX 3B	Climb on 196° track to 1970', turn RIGHT, 296° track, turn LEFT to intercept 236° bearing from ZP NDB to DITIX.
ROLOP 4B	Climb on 196° track to 1970', turn RIGHT to intercept 209° bearing from ZP NDB to ROLOP.
UMSOT 4B	Climb on 196° track to 1970', turn RIGHT, 353° track, turn LEFT to intercept 268° bearing from ZP NDB to UMSOT.

UKDE/OZH
ZAPORIZHZHIA INTL

JEPPESEN ZAPORIZHZHIA, UKRAINE
 17 MAY 19 **(10-3D)** Eff 23 May **SID**

Apt Elev 374'	Trans level: By ATC Trans alt: 10010' Due to noise abatement: flights over the city are prohibited and strict adherence to entry patterns by crews is required.	
-------------------------	--	---

BULIG 2J [BULI2J]
DNIPRO 2J (DNP 2J) [DNP2J]
SOMON 2J [SOMO2J]
RWY 02L DEPARTURES



FT/METER CONVERSION	
QNH	
1970'	- 600m
7060'	- 2150m
8040'	- 2450m
10010'	- 3050m

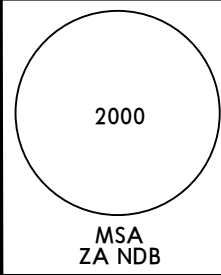
SID	ROUTING
BULIG 2J	Climb on 016° track to 1970', turn RIGHT, 128° track, turn LEFT to intercept 070° bearing from ZA NDB to BULIG.
DNP 2J	Climb on 016° track to 1970', turn LEFT to intercept DNP R-150 inbound to DNP VOR.
SOMON 2J	Climb on 016° track to 1970', turn RIGHT, 128° track, turn RIGHT to intercept DNP R-142 to SOMON.

UKDE/OZH
ZAPORIZHZHIA INTL

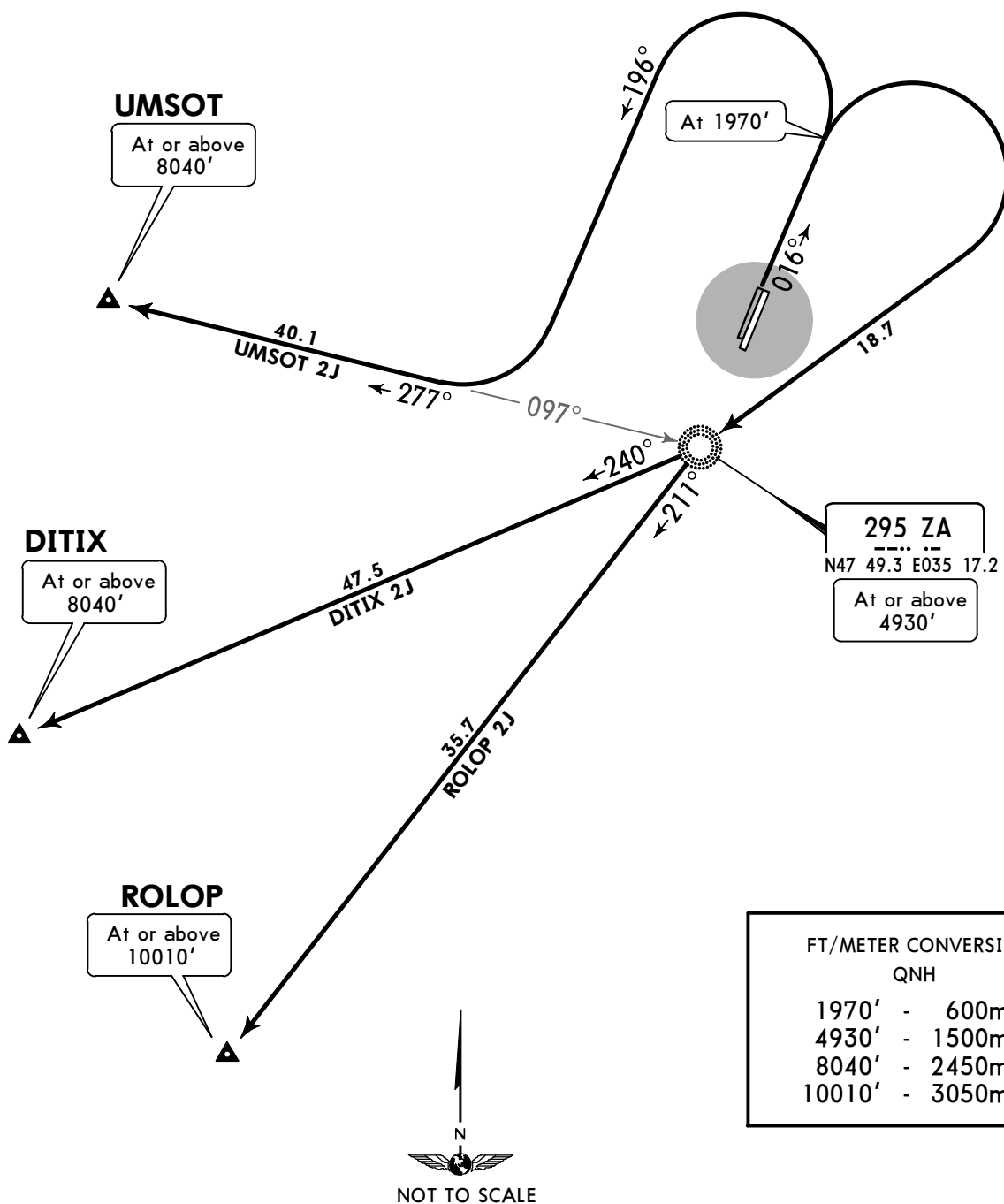
JEPPESEN ZAPORIZHZHIA, UKRAINE
 17 MAY 19 **10-3E** Eff 23 May

SID

Apt Elev **374'** Trans level: By ATC Trans alt: 10010'
 Due to noise abatement: flights over the city are prohibited and strict adherence to entry patterns by crews is required.



DITIX 2J [DITI2J]
ROLOP 2J [ROLO2J]
UMSOT 2J [UMSO2J]
RWY 02L DEPARTURES



SID	ROUTING
DITIX 2J	Climb on 016° track to 1970', turn RIGHT to ZA NDB, turn RIGHT, 240° bearing from ZA NDB to DITIX.
ROLOP 2J	Climb on 016° track to 1970', turn RIGHT to ZA NDB, turn LEFT, 211° bearing from ZA NDB to ROLOP.
UMSOT 2J	Climb on 016° track to 1970', turn LEFT, track 196°, turn RIGHT to intercept 277° bearing from ZA NDB to UMSOT.

UKDE/OZH
ZAPORIZHZHIA INTL

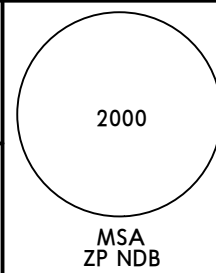
JEPPESEN 17 MAY 19 **10-3F** Eff 23 May

ZAPORIZHZHIA, UKRAINE

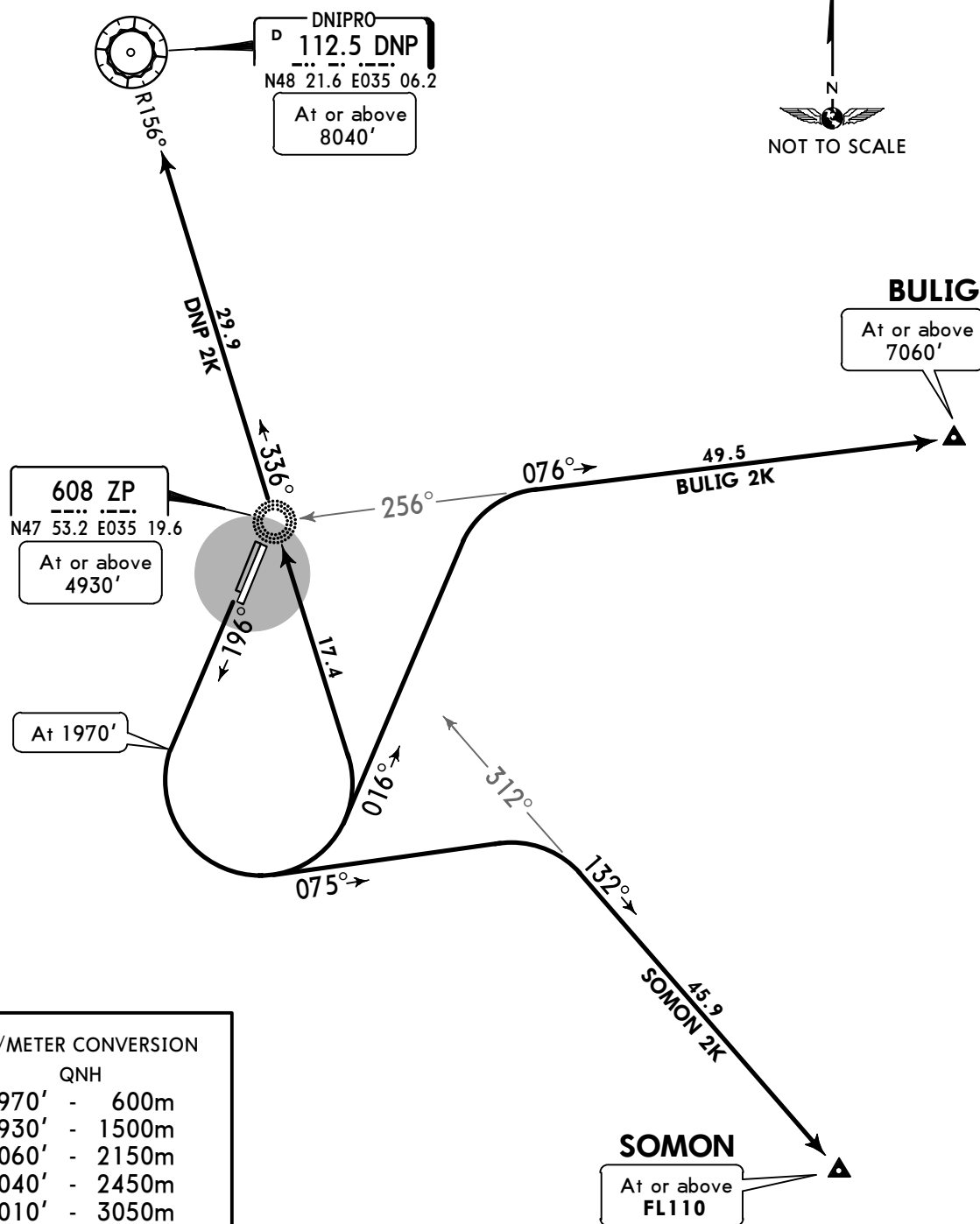
SID

Apt Elev
374'

Trans level: By ATC Trans alt: 10010'
 1. EXPECT close-in obstacles.
 2. Due to noise abatement: flights over the city are prohibited and strict adherence to entry patterns by crews is required.



BULIG 2K [BULI2K]
DNIPRO 2K (DNP 2K) [DNP2K]
SOMON 2K [SOMO2K]
RWY 20R DEPARTURES



FT/METER CONVERSION	
QNH	
1970'	- 600m
4930'	- 1500m
7060'	- 2150m
8040'	- 2450m
10010'	- 3050m

SID	ROUTING
BULIG 2K	Climb on 196° track to 1970', turn LEFT, 016° track, turn RIGHT to intercept 076° bearing from ZP NDB to BULIG.
DNP 2K	Climb on 196° track to 1970', turn LEFT to ZP NDB, intercept DNP R-156 inbound to DNP VOR.
SOMON 2K	Climb on 196° track to 1970', turn LEFT, 075° track, turn RIGHT to intercept 132° bearing from ZP NDB to SOMON.

UKDE/OZH
ZAPORIZHZHIA INTL

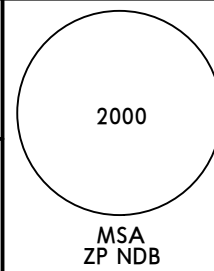
JEPPESEN 17 MAY 19 **10-3G** Eff 23 May

ZAPORIZHZHIA, UKRAINE

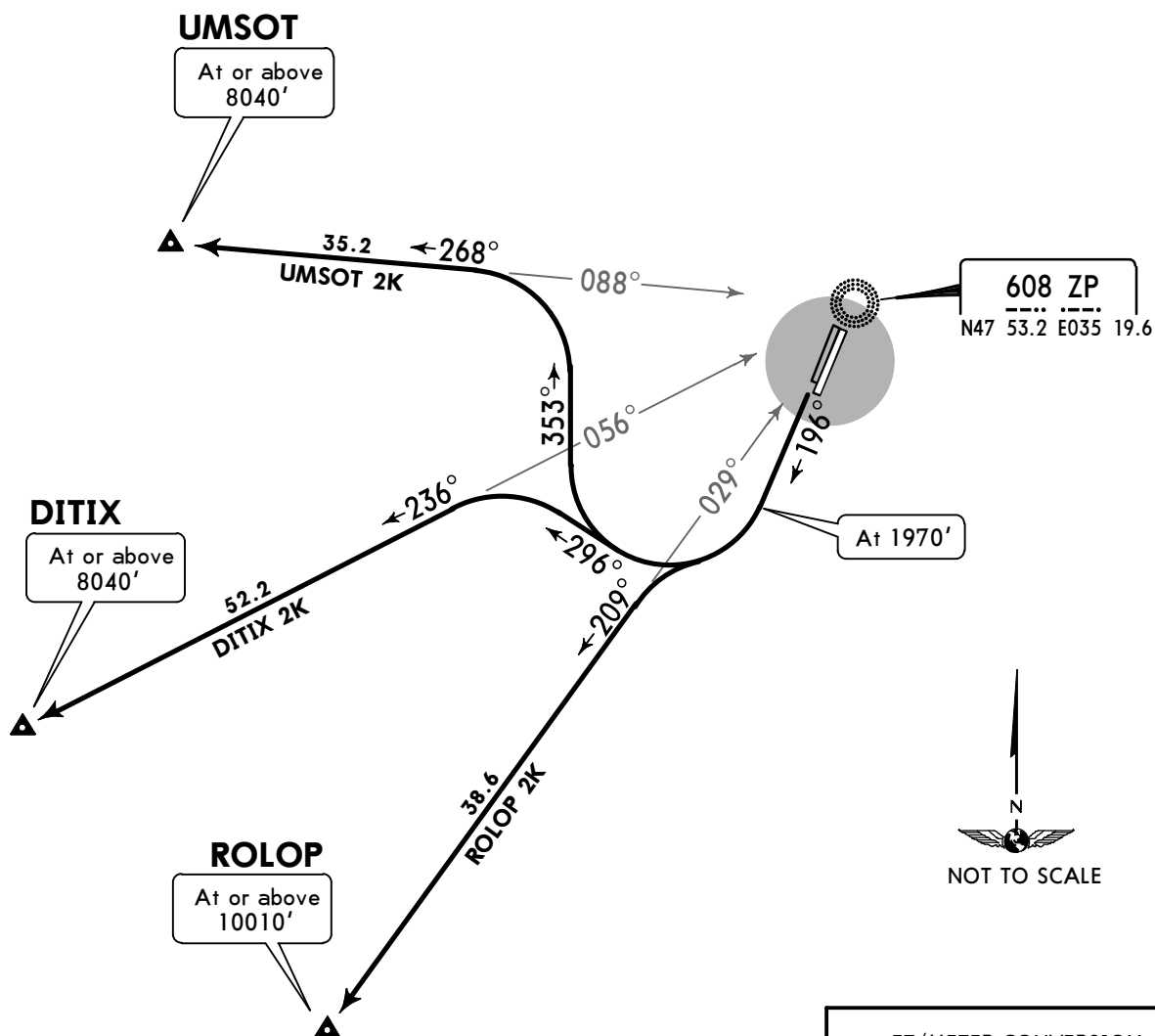
SID

Apt Elev
374'

Trans level: By ATC Trans alt: 10010'
 1. EXPECT close-in obstacles.
 2. Due to noise abatement: flights over the city are prohibited and strict adherence to entry patterns by crews is required.



DITIX 2K [DITI2K]
ROLOP 2K [ROLO2K]
UMSOT 2K [UMSO2K]
RWY 20R DEPARTURES



FT/METER CONVERSION
 QNH

1970'	-	600m
4930'	-	1500m
8040'	-	2450m
10010'	-	3050m

DITIX 2K, UMSOT 2K
 These SIDs require a minimum climb gradient of 7.0% up to 4930'.

Gnd speed-KT	75	100	150	200	250	300
7.0% V/V (fpm)	532	709	1063	1418	1772	2127

SID	ROUTING
DITIX 2K	Climb on 196° track to 1970', turn RIGHT, 296° track, turn LEFT to intercept 236° bearing from ZP NDB to DITIX.
ROLOP 2K	Climb on 196° track to 1970', turn RIGHT to intercept 209° bearing from ZP NDB to ROLOP.
UMSOT 2K	Climb on 196° track to 1970', turn RIGHT, 353° track, turn LEFT to intercept 268° bearing from ZP NDB to UMSOT.

CHANGES: SIDs renumbered; general note 2 revised.

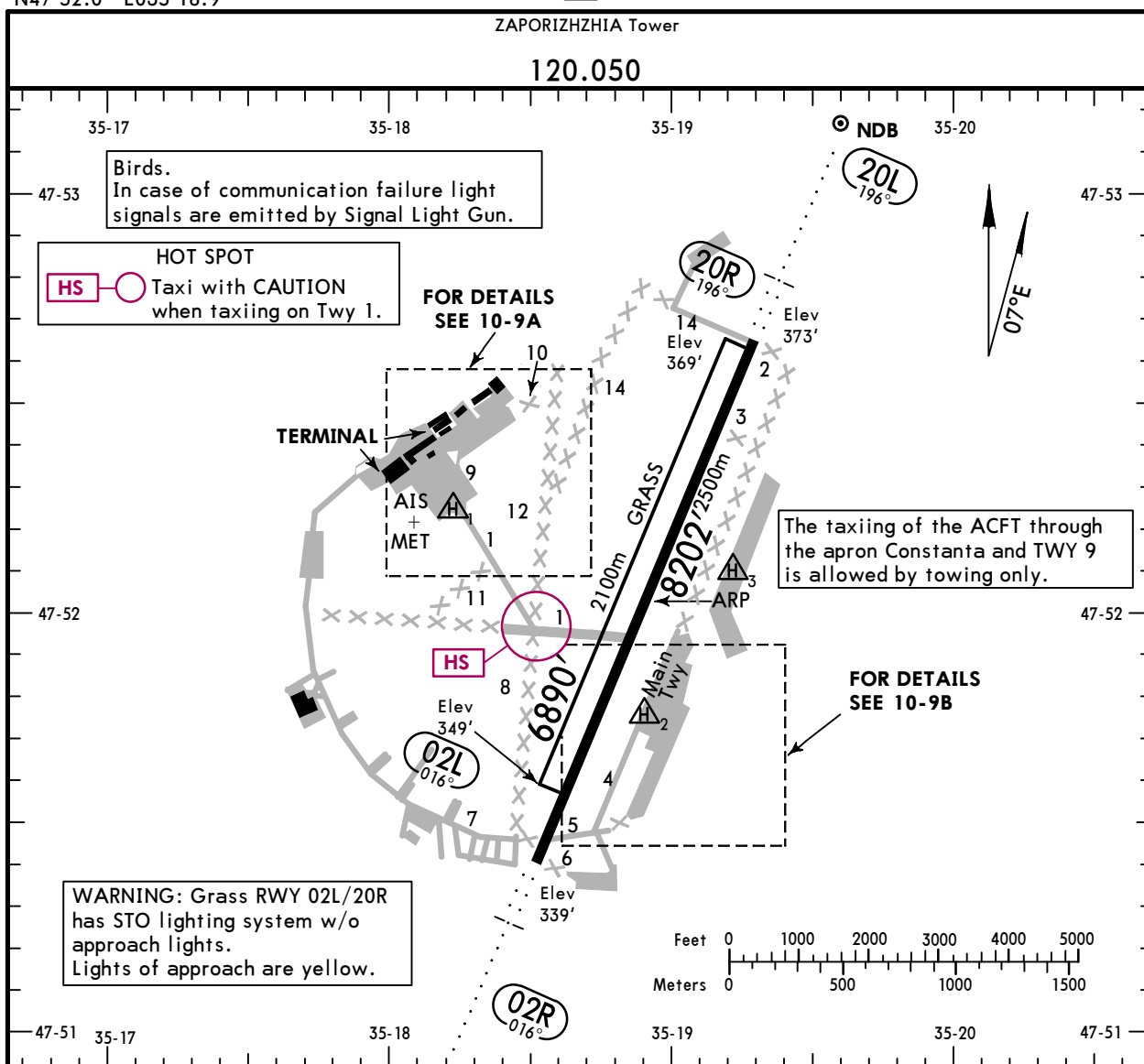
UKDE/OZH

Apt Elev **374'**
N47 52.0 E035 18.9

JEPPESSEN ZAPORIZHZHIA, UKRAINE

30 AUG 19 **(10-9) Eff 12 Sep**

ZAPORIZHZHIA INTL



ADDITIONAL RUNWAY INFORMATION					
RWY	USABLE LENGTHS	LANDING BEYOND		TAKE-OFF	WIDTH
		Threshold	Glide Slope		
02R 20L	RL (100m) ALS	RVR	7170' 2185m 7108' 2167m	1	138' 42m
02L 20R	Grass runway				279' 85m

1 TAKE-OFF RUN AVAILABLE
RWY 02R:
 From rwy head 8202' (2500m)
 twy 1 int 4724' (1440m)
RWY 20L:
 From rwy head 8202' (2500m)
 twy 1 int 3478' (1060m)

After ACFT landing 180° turn is allowed for RWY vacation only in at abeam TWY 2, 3, 5, 6, 7, 14.
 For ACFT code C and D 180° turn is allowed for RWY vacation only at the end of RWY at abeam TWY 2, 14 and TWY 5, 7.
 Taxiing ACFT via TWY 1 and Large Apron only under Follow-me car instructions.
 Taxiing via RWY for line-up is performed via centreline with further Right (Left) turn.
 Taxiing via RWY and TWY 1 are performed under the inner engine power and should taxi to/from stands of Large Apron strictly marking.
 TWY 2, 3, 6, 7, 8, 10, 11, 12, 14 - for taxiing of the ACFT are inapplicable.

	TAKE-OFF		
	Low Visibility Take-off		
	Day: RL & RCLM Night: RL	Day: RL or RCLM Night: RL	Adequate vis ref (Day only)
A			
B			
C	RVR 300m	400m	500m
D			

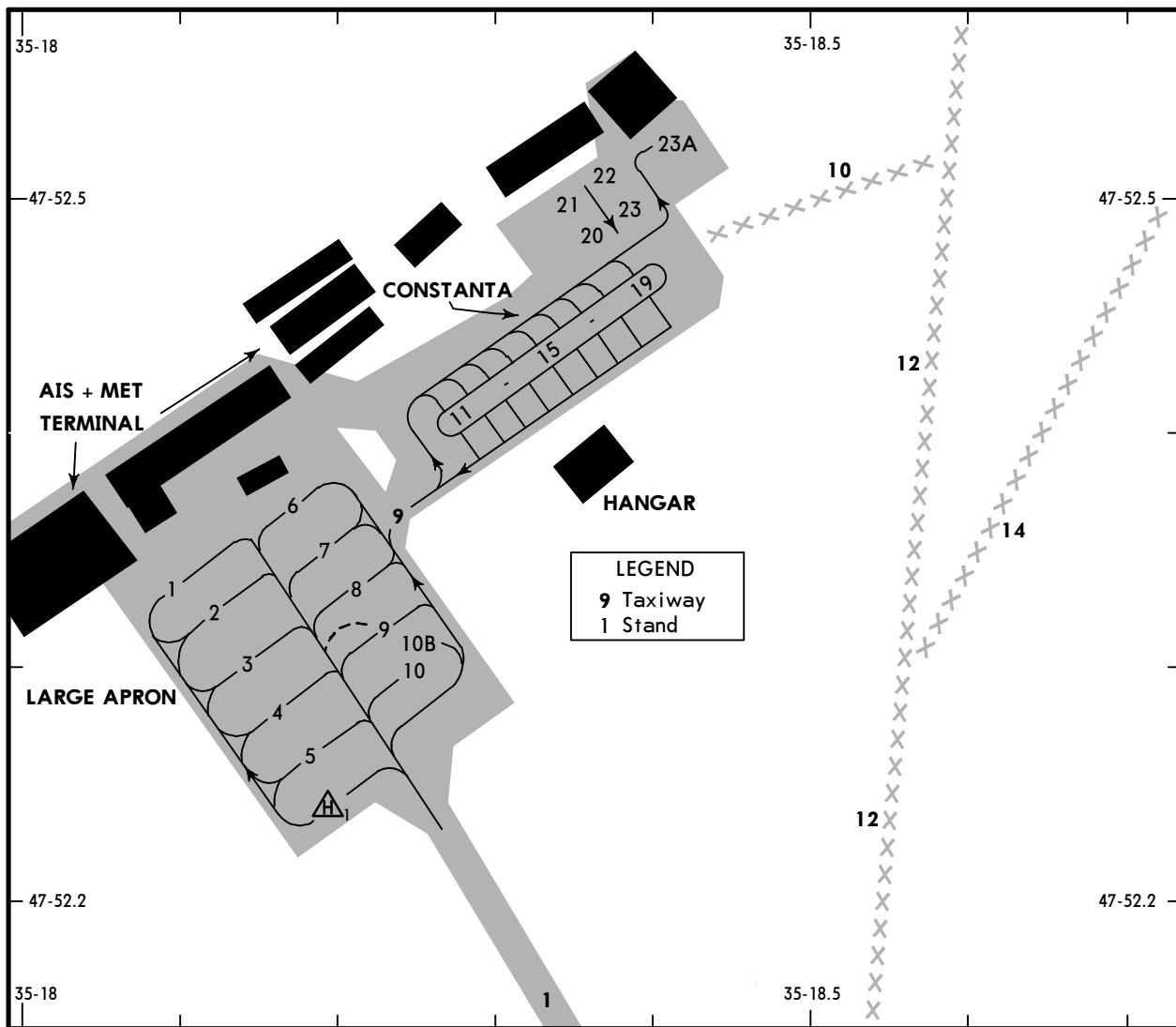
UKDE/OZH



JEPPESEN ZAPORIZHZHIA, UKRAINE

30 AUG 19
Eff 12 Sep (10-9A)

ZAPORIZHZHIA INTL



INS COORDINATES

STAND	COORDINATES	ELEV	STAND	COORDINATES	ELEV
1	N47 52.3 E035 18.1	343'	11	N47 52.4 E035 18.3	355'
2	N47 52.3 E035 18.1	342'	12	N47 52.4 E035 18.3	354'
3	N47 52.3 E035 18.2	342'	13 thru 15	N47 52.4 E035 18.3	352'
4	N47 52.3 E035 18.2	341'	16	N47 52.4 E035 18.4	353'
5	N47 52.3 E035 18.2	343'	17	N47 52.4 E035 18.4	354'
6, 7	N47 52.4 E035 18.2	345'	18	N47 52.5 E035 18.4	354'
8	N47 52.3 E035 18.2	343'	19	N47 52.5 E035 18.4	355'
9	N47 52.3 E035 18.3	345'	20	N47 52.5 E035 18.3	352'
10, 10B	N47 52.3 E035 18.2	344'	21	N47 52.5 E035 18.3	351'
H1	N47 52.2 E035 18.2	342'	22, 23	N47 52.5 E035 18.4	351'
			23A	N47 52.5 E035 18.4	355'

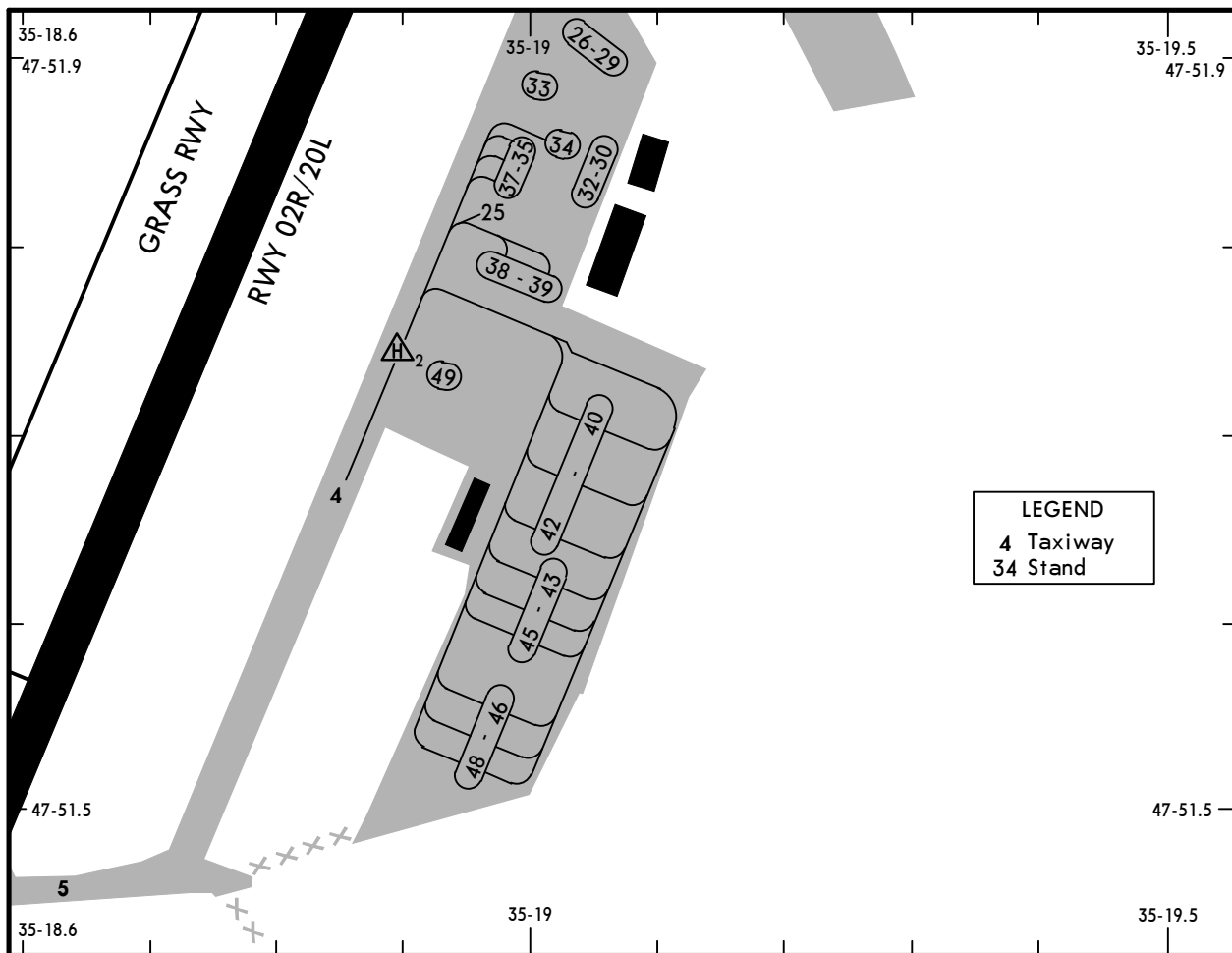
UKDE/OZH



JEPPESEN ZAPORIZHZHIA, UKRAINE

30 AUG 19
Eff 12 Sep (10-9B)

ZAPORIZHZHIA INTL



INS COORDINATES

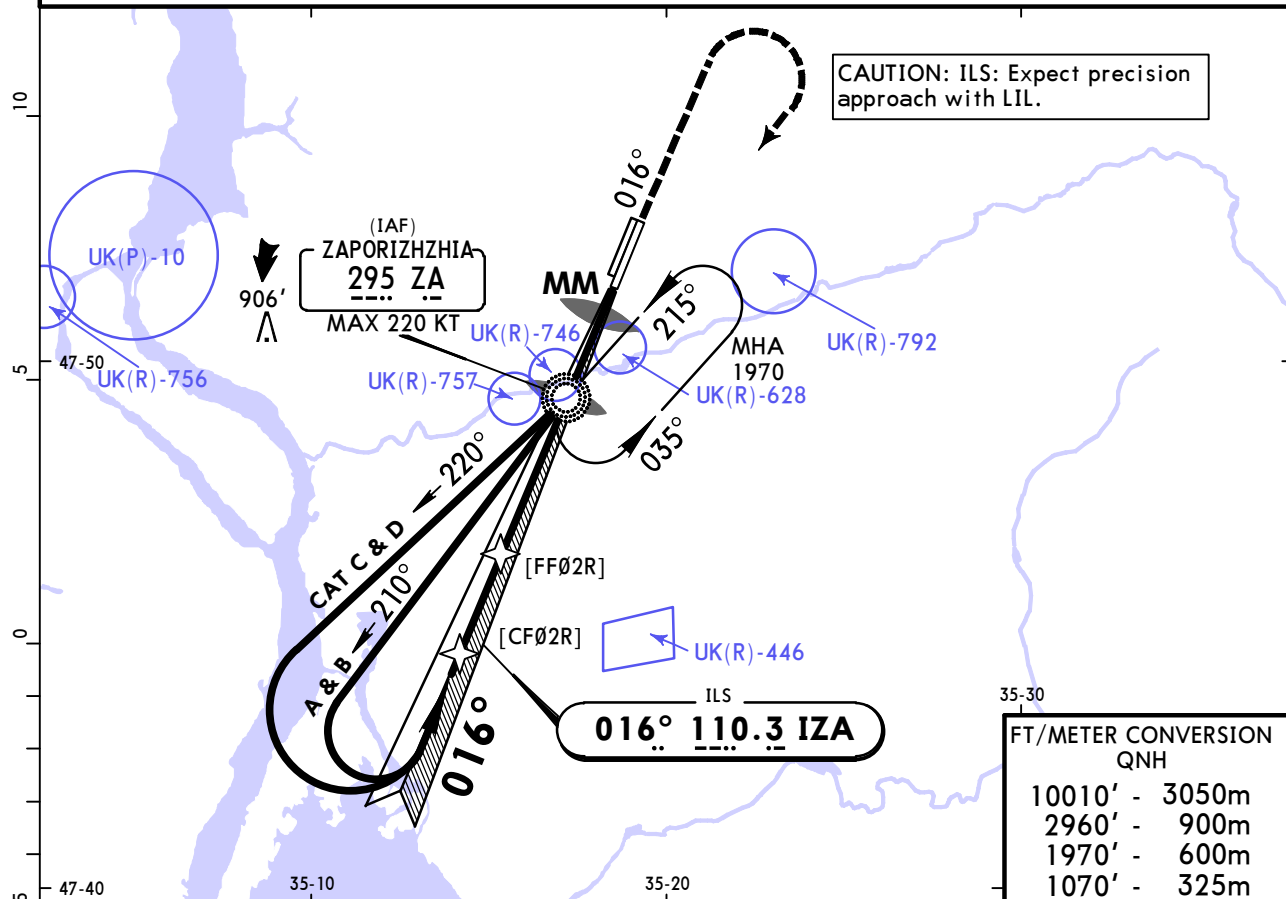
STAND	COORDINATES	ELEV
H2	N47 51.8 E035 18.9	355
38	N47 51.8 E035 19.0	357
39	N47 51.8 E035 19.0	356
40	N47 51.8 E035 19.0	354
41	N47 51.7 E035 19.0	352
42	N47 51.7 E035 19.0	350
43	N47 51.7 E035 19.0	347
44	N47 51.7 E035 19.0	344
45	N47 51.6 E035 19.0	342
46	N47 51.6 E035 18.9	339
47	N47 51.6 E035 18.9	337
48	N47 51.6 E035 18.9	338
49	N47 51.7 E035 18.9	355

UKDE/OZH
ZAPORIZHZHIA INTL

JEPPESEN 30 AUG 19 **(11-1)** **Eff 12 Sep**

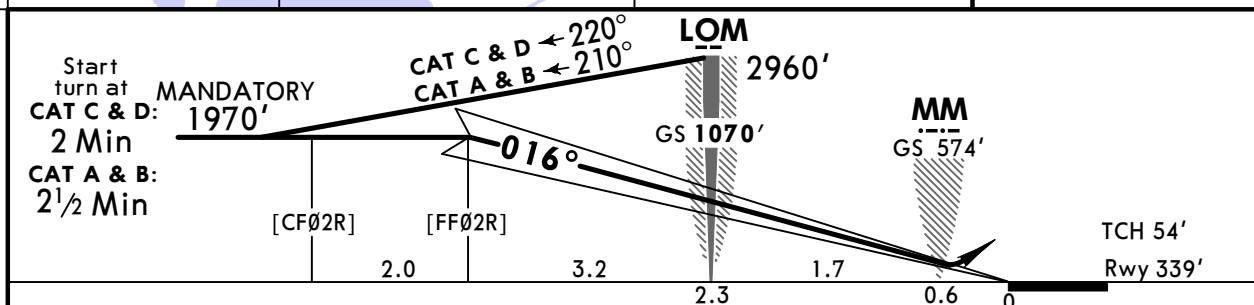
ZAPORIZHZHIA, UKRAINE
ILS Rwy 02R

ZAPORIZHZHIA Radar (APP) 119.2			ZAPORIZHZHIA Tower 120.050		
LOC IZA 110.3	Final Apch Crs 016°	GS LOM 1070' (731')	ILS DA(H) Refer to Minimums	Apt Elev 374'	2000 MSA ZA NDB
Rwy 339'					
MISSED APCH: Climb on 016° to 1970', then turn RIGHT climbing to 2960' to NDB, then according to chart.					
Alt Set: hPa		Rwy Elev: 12 hPa	Trans level: By ATC		Trans alt: 10010'



FT/METER CONVERSION
QNH

10010'	3050m
2960'	900m
1970'	600m
1070'	325m



Gnd speed-Kts	70	90	100	120	140	160	ALS 1970' ↑ on 016°
GS	2.70°	334	430	478	573	764	

PANS OPS	Standard STRAIGHT-IN LANDING RWY 02R		CIRCLE-TO-LAND		
	ILS		LOC (GS out)		
	DA(H) A: 559' (220') C: 579' (240')				
	B: 569' (230') D: 588' (249')				
	FULL ALS out				
A			Max Kts	MDA(H)	VIS
B			100	780' (406')	1500m
C	RVR 1000m	RVR 1200m	135	880' (506')	1600m
D		RVR 1300m	180	1120' (746')	2400m
			205	1150' (776')	3600m

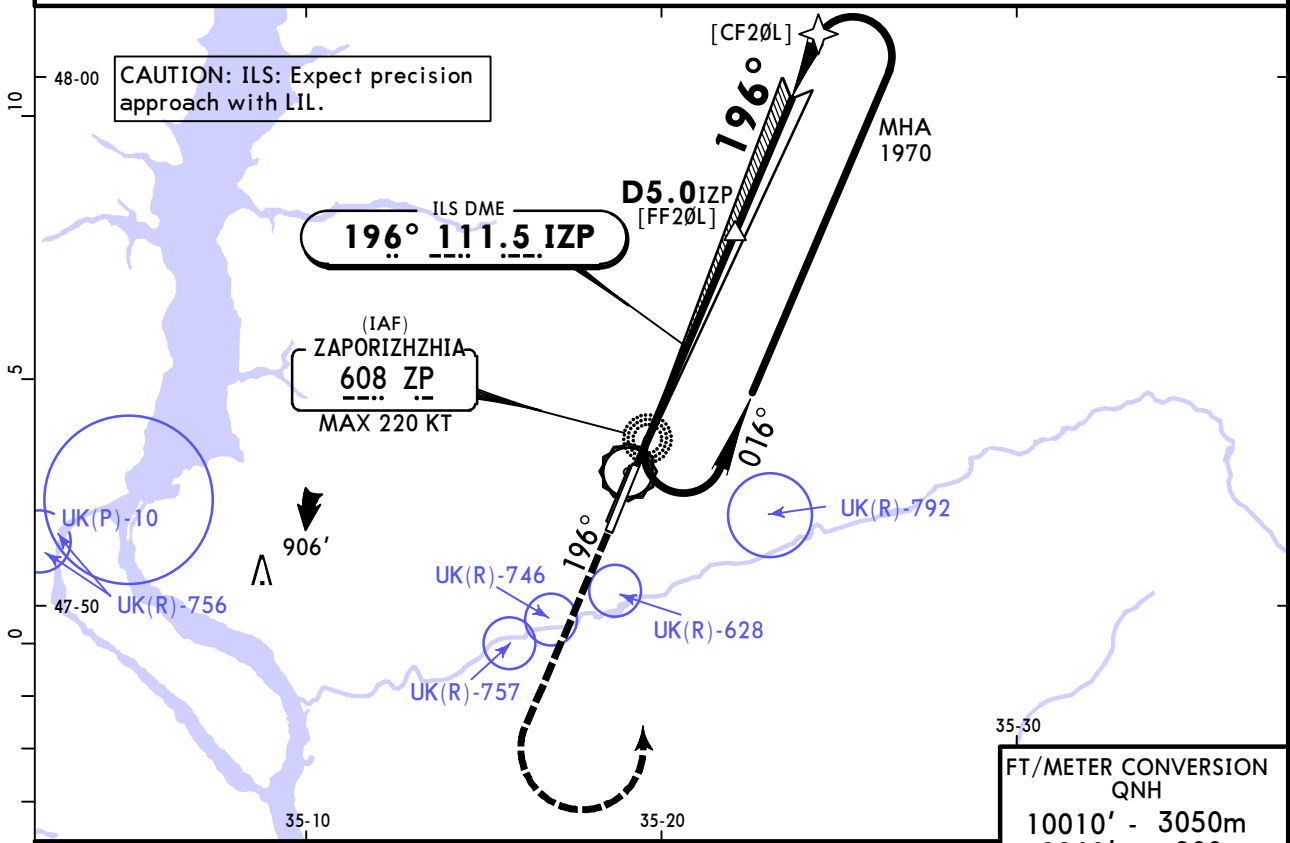
CHANGES: Circle minimums MDA(H).

UKDE/OZH
ZAPORIZHZHIA INTL

JEPPESEN ZAPORIZHZHIA, UKRAINE
 30 AUG 19 **(11-2)** **Eff 12 Sep**
ILS Rwy 20L

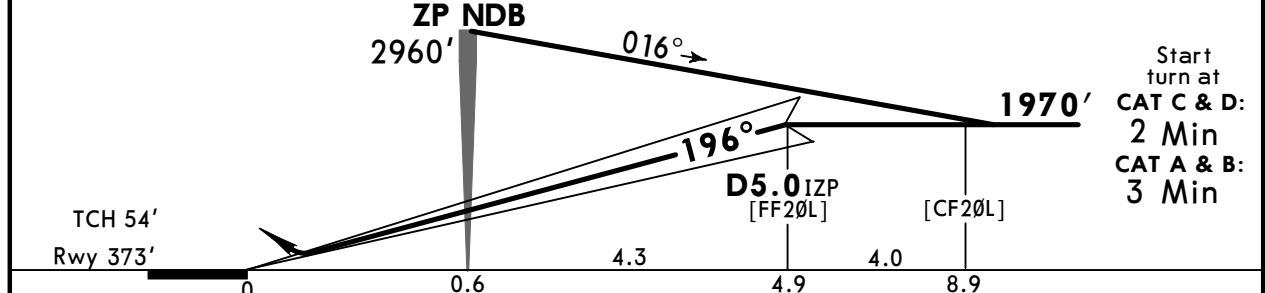
ZAPORIZHZHIA Radar (APP) 119.2			ZAPORIZHZHIA Tower 120.050		
LOC IZP 111.5	Final Apch Crs 196°	D5.0 IZP 1970' (1597')	ILS DA(H) Refer to Minimums	Apt Elev 374' Rwy 373'	2000 MSA ZP NDB
MISSED APCH: Climb on 196° to 1970', then turn LEFT climbing to 2960' to ZP NDB, then according to chart.					

Alt Set: hPa Rwy Elev: 14 hPa Trans level: By ATC Trans alt: 10010'



FT/METER CONVERSION QNH	
10010'	3050m
2960'	900m
1970'	600m

IZP DME	1.1	2.1	3.2	4.3
ALTITUDE	720'	1060'	1410'	1750'



Gnd speed-Kts	70	90	100	120	140	160	ALS	1970' ↑ on 196°
GS	3.00°	372	478	531	637	743		

PANS OPS	Standard STRAIGHT-IN LANDING RWY 20L		CIRCLE-TO-LAND
	ILS DA(H) ABC: 573' (200') D: 583' (210')	LOC (GS out)	
	FULL	ALS out	Max Kts, MDA(H), VIS
A			100 780' (406') 1500m
B			135 880' (506') 1600m
C	RVR 1000m	RVR 1200m	180 1120' (746') 2400m
D			205 1150' (776') 3600m
		NOT AUTHORIZED	

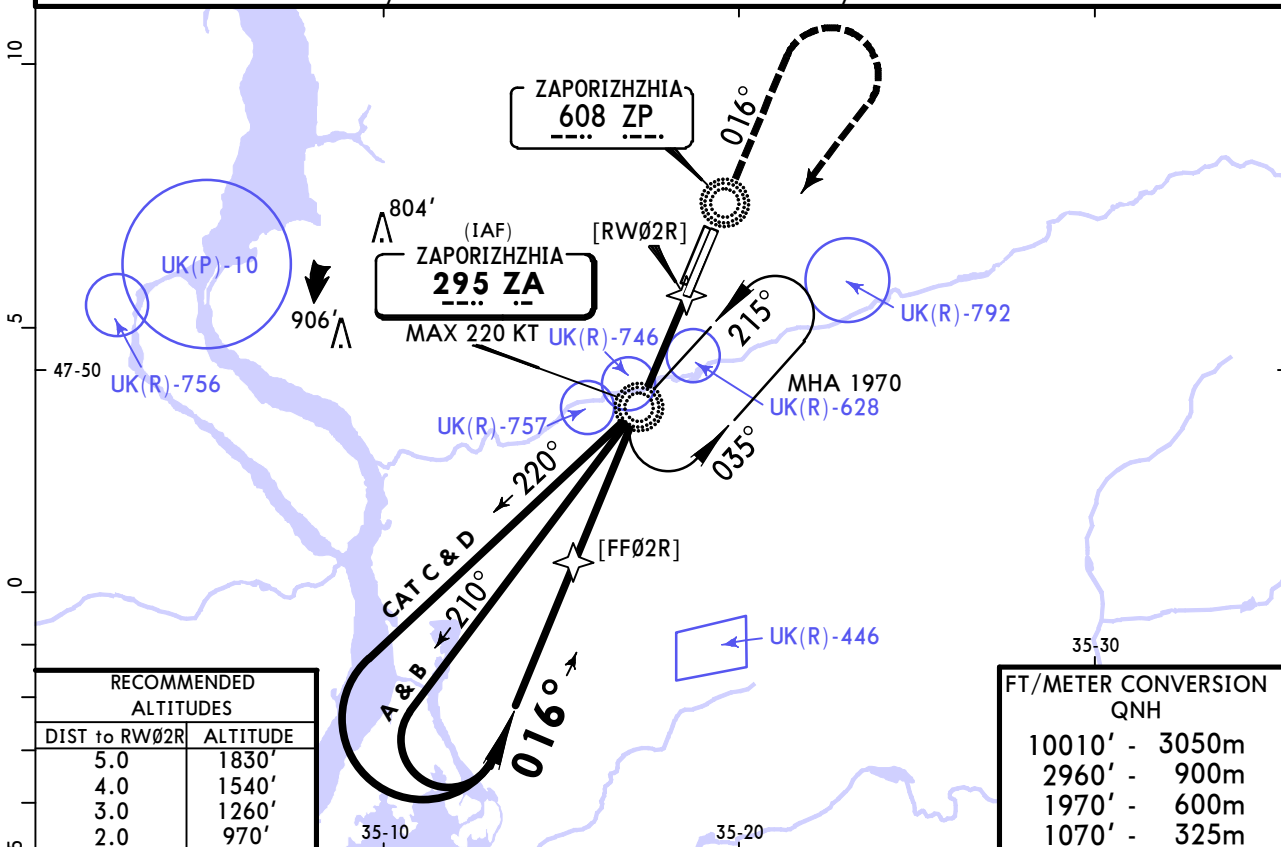
UKDE/OZH ZAPORIZHZHIA INTL

JEPPESEN ZAPORIZHZHIA, UKRAINE
1 NOV 19 **16-1** **Eff 7 Nov**

NDB Rwy 02R

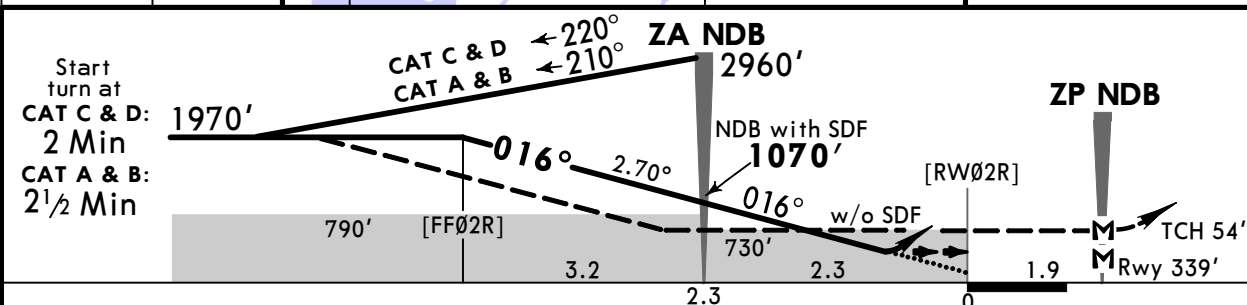
ZAPORIZHZHIA Radar (APP) 119.2			ZAPORIZHZHIA Tower 120.050		
NDB ZA 295	Final Apch Crs 016°	Minimum Alt ZA NDB 1070' (731')	DA/MDA(H) (CONDITIONAL) 730' (391')	Apt Elev 374'	2000 MSA ZA NDB
				Rwy 339'	
MISSED APCH: Climb on 016° to 1970', then turn RIGHT climbing to 2960' to ZA NDB, then according to chart.					

Alt Set: hPa Rwy Elev: 12 hPa Trans level: By ATC Trans alt: 10010'

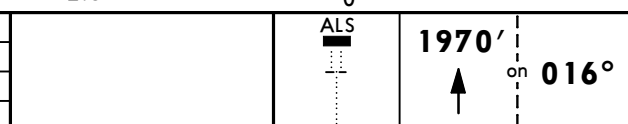


RECOMMENDED ALTITUDES	
DIST to RW02R	ALTITUDE
5.0	1830'
4.0	1540'
3.0	1260'
2.0	970'

FT/METER CONVERSION QNH	
10010'	3050m
2960'	900m
1970'	600m
1070'	325m



Gnd speed-Kts	70	90	100	120	140	160
Descent Angle 2.70°	334	430	478	573	669	764



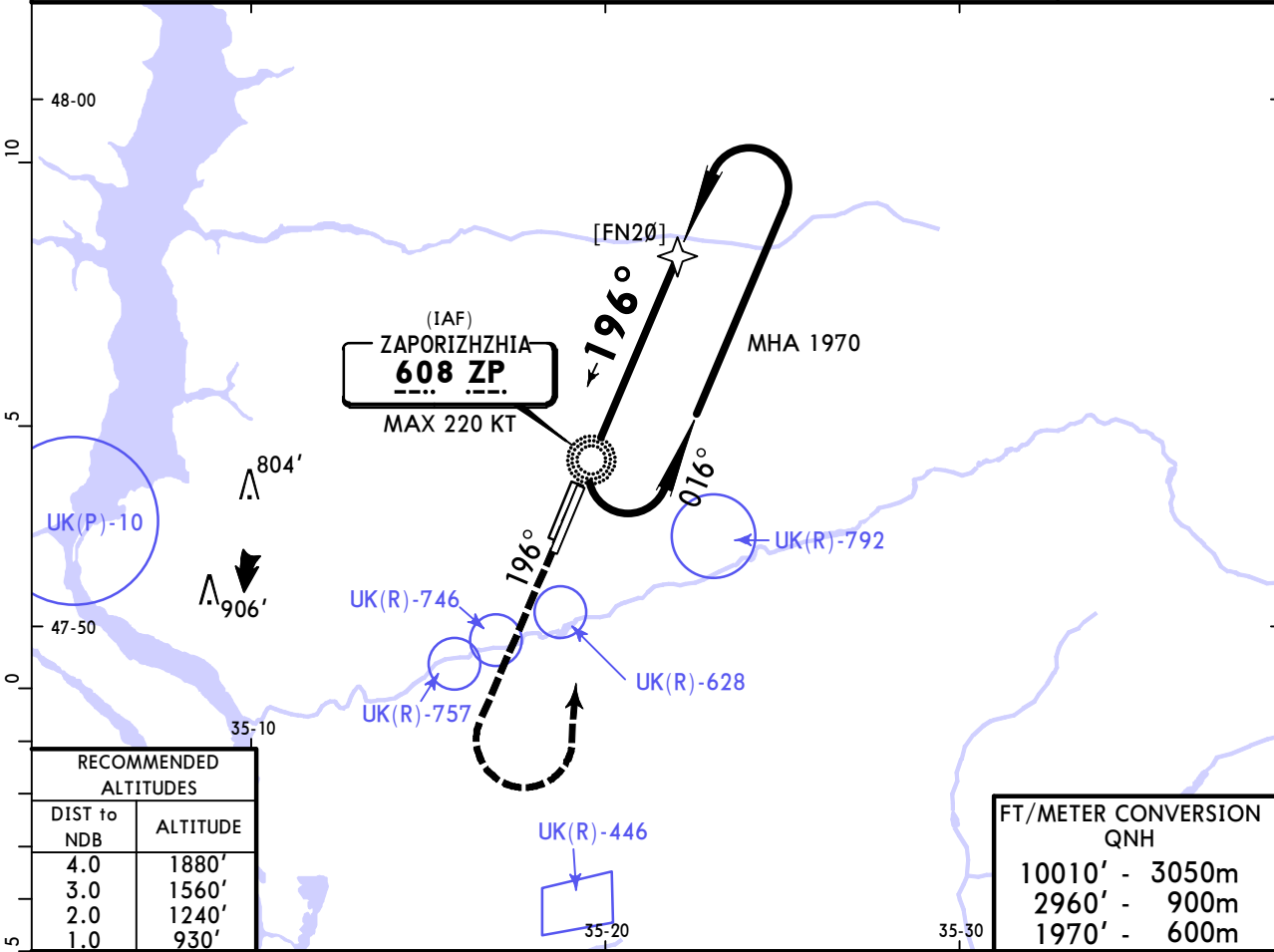
PANS OPS	STRAIGHT-IN LANDING RWY 02R				CIRCLE-TO-LAND	
	with SDF at ZA NDB	with SDF at ZA NDB	W/o ZA NDB	W/o ZA NDB non-CDFA	Max Kts	MDA(H) VIS
A	DA/MDA(H) 1 2 730' (391')	DA/MDA(H) 1 3 730' (391')	DA/MDA(H) 1 2 790' (451')	DA/MDA(H) 3 790' (451')	100	840' (466') 4 1500m
B	RVR 1500m	RVR 1600m	RVR 1500m	RVR 2100m	135	880' (506') 4 1600m
C	RVR 1600m	RVR 1800m	RVR 1900m	RVR 2100m	180	1130' (756') 4 2400m
D	RVR 1600m	RVR 1800m	RVR 1900m	RVR 2100m	205	1150' (776') 3600m

UKDE/OZH ZAPORIZHZHIA INTL

JEPPESEN 1 NOV 19 **(16-2)** **Eff 7 Nov**

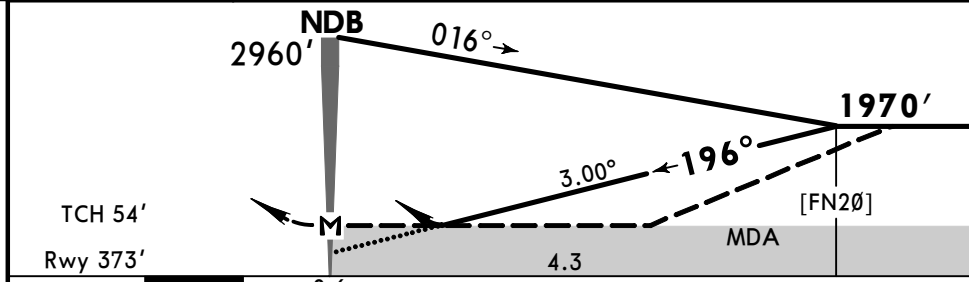
ZAPORIZHZHIA, UKRAINE NDB Rwy 20L

ZAPORIZHZHIA Radar (APP)			ZAPORIZHZHIA Tower		
119.2			120.050		
NDB ZP 608	Final Apch Crs 196°	No FAF	DA/MDA(H) (CONDITIONAL) 890' (517')	Apt Elev 374'	2000
MISSED APCH: Climb on 196° to 1970', then turn LEFT climbing to 2960' to NDB, then according to chart.					
Alt Set: hPa	Rwy Elev: 14 hPa	Trans level: By ATC	Trans alt: 10010'	MSA ZP NDB	



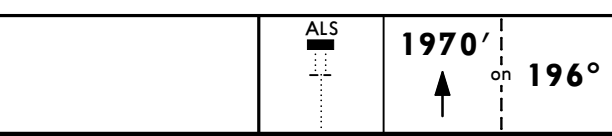
DIST to NDB	ALTITUDE
4.0	1880'
3.0	1560'
2.0	1240'
1.0	930'

10010'	-	3050m
2960'	-	900m
1970'	-	600m



Start turn at
CAT A & B:
2 1/2 Min
CAT C & D:
2 Min

Gnd speed-Kts	70	90	100	120	140	160
Descent Angle 3.00°	372	478	531	637	743	849



PANS OPS	STRAIGHT-IN LANDING RWY 20L				CIRCLE-TO-LAND	
	With FN20 CDFA		W/o FN20 non-CDFA		Max Kts	MDA(H) VIS
	DA/MDA(H) 890' (517')		MDA(H) 890' (517')			
A	ALS out		ALS out		100	890' (516') I 1500m
B	RVR 1500m	RVR 2300m	RVR 2600m		135	890' (516') I 1600m
C	RVR 2100m	RVR 2400m	RVR 2500m	RVR 2800m	180	1130' (756') I 2400m
D					205	1140' (766') 3600m

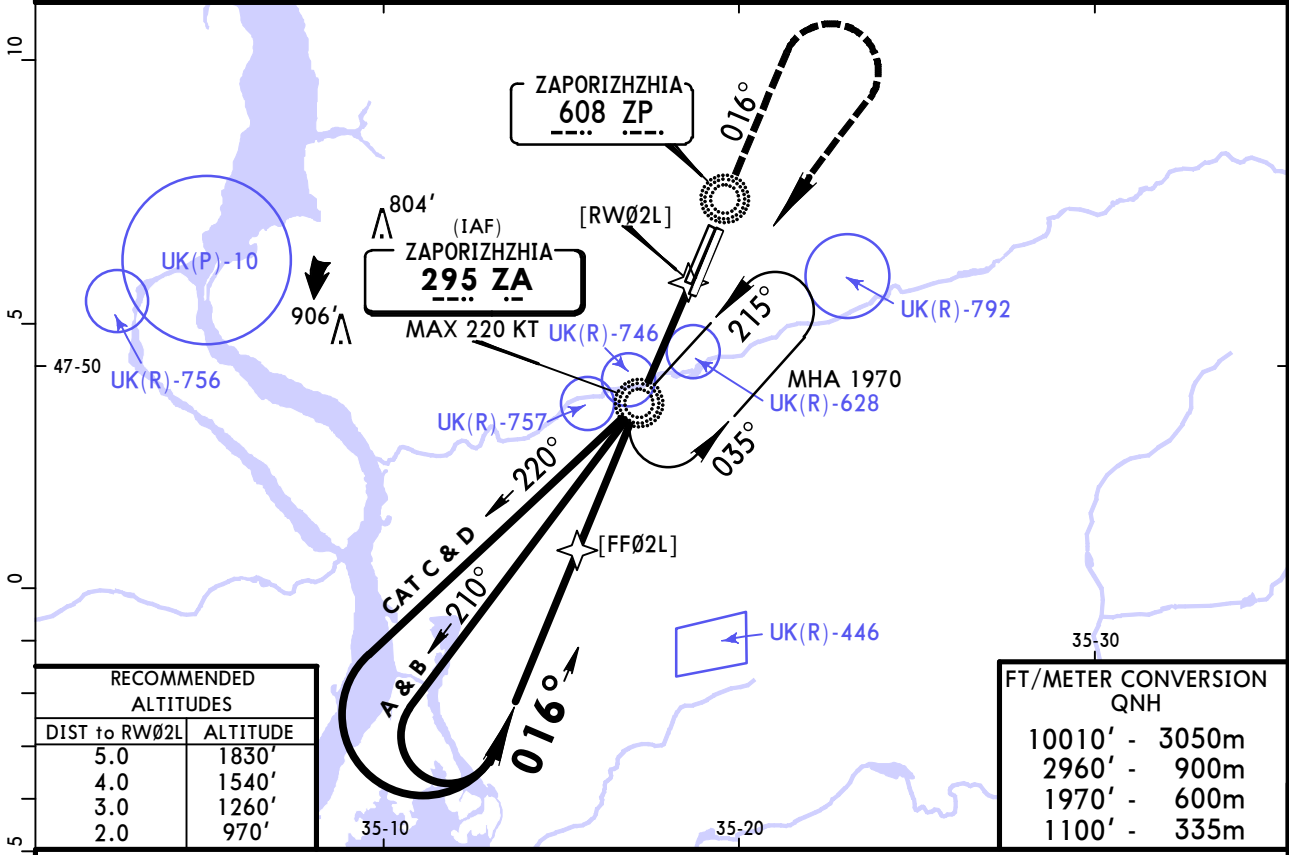
I or higher straight-in minimums.

CHANGES: Circling minimums. TCH.

UKDE/OZH ZAPORIZHZHIA INTL

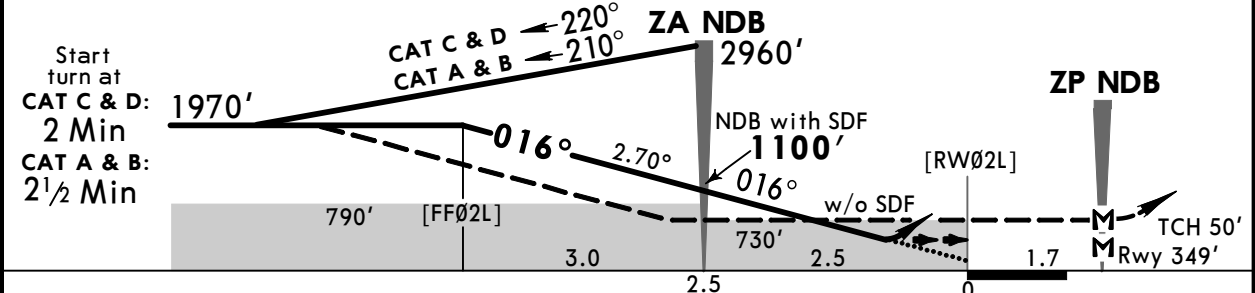
JEPPESEN ZAPORIZHZHIA, UKRAINE
10 MAY 19 **(16-3)** **Eff 23 May** **NDB GRASS Rwy 02L**

ZAPORIZHZHIA Radar (APP) 119.2			ZAPORIZHZHIA Tower 120.050		
NDB ZA 295	Final Apch Crs 016°	Minimum Alt ZA NDB 1100' (751')	DA/MDA(H) (CONDITIONAL) 730' (381')	Apt Elev 374' Rwy 349'	2000 MSA ZA NDB
MISSED APCH: Climb on 016° to 1970', then turn RIGHT climbing to 2960' to ZA NDB, then according to chart.					
Alt Set: hPa		Rwy Elev: 13 hPa	Trans level: By ATC		Trans alt: 10010'

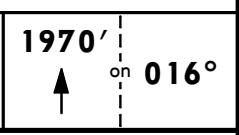


RECOMMENDED ALTITUDES	
DIST to RW02L	ALTITUDE
5.0	1830'
4.0	1540'
3.0	1260'
2.0	970'

FT/METER CONVERSION QNH	
10010'	3050m
2960'	900m
1970'	600m
1100'	335m



Gnd speed-Kts	70	90	100	120	140	160
Descent Angle 2.70°	334	430	478	573	669	764



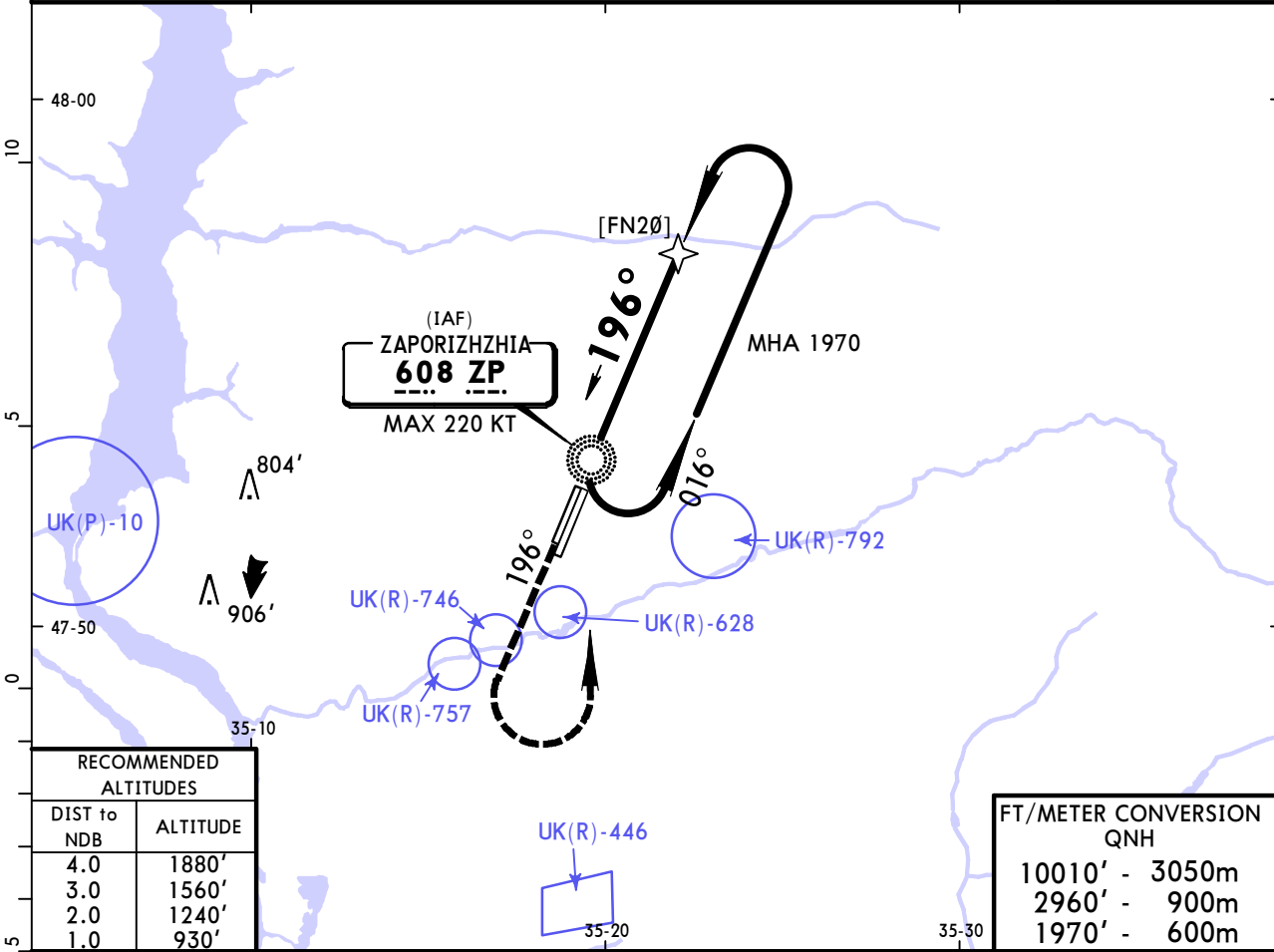
	STRAIGHT-IN LANDING RWY 02L				CIRCLE-TO-LAND	
	with SDF at ZA NDB CDFA DA/MDA(H) 1	with SDF at ZA NDB CDFA DA/MDA(H) 2	W/o ZA NDB CDFA DA/MDA(H) 1	W/o ZA NDB non-CDFA MDA(H) 2	Max Kts	MDA(H) VIS
A	730' (381')	730' (381')	790' (441')	790' (441')	100	840' (466') 3 1500m
B	RVR 1500m		RVR 1500m	RVR 2300m	135	880' (506') 3 1600m
C		RVR 1800m			180	1130' (756') 3 2400m
D	RVR 1800m		RVR 2100m	RVR 2500m	205	1150' (776') 3600m

1 with [FF02L] **2** w/o [FF02L] **3** or higher straight-in minimums.

UKDE/OZH ZAPORIZHZHIA INTL

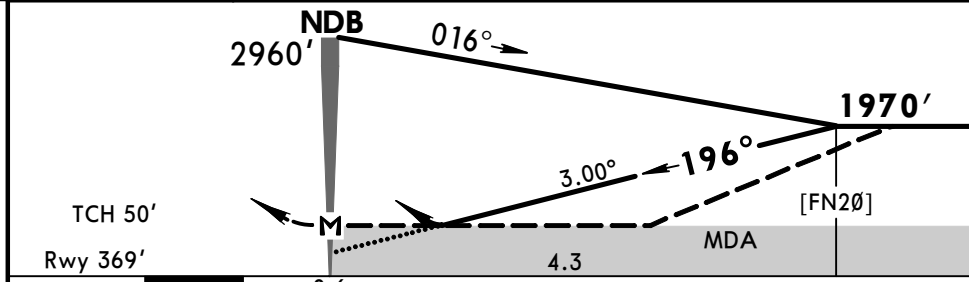
JEPPESEN ZAPORIZHZHIA, UKRAINE
10 MAY 19 **(16-4)** **Eff 23 May** **NDB GRASS Rwy 20R**

ZAPORIZHZHIA Radar (APP) 119.2			ZAPORIZHZHIA Tower 120.050		
NDB ZP 608	Final Apch Crs 196°	No FAF	DA/MDA(H) (CONDITIONAL) 890' (521')	Apt Elev 374'	2000
MISSED APCH: Climb on 196° to 1970', then turn LEFT climbing to 2960' to NDB, then according to chart.					
Alt Set: hPa	Rwy Elev: 13 hPa	Trans level: By ATC	Trans alt: 10010'	MSA ZP NDB	



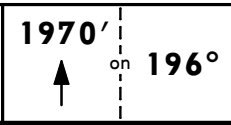
DIST to NDB	ALTITUDE
4.0	1880'
3.0	1560'
2.0	1240'
1.0	930'

10010'	-	3050m
2960'	-	900m
1970'	-	600m



Start turn at
CAT A & B:
 2½ Min
CAT C & D:
 2 Min

Gnd speed-Kts	70	90	100	120	140	160
Descent Angle 3.00°	372	478	531	637	743	849



Standard		STRAIGHT-IN LANDING RWY 20R		CIRCLE-TO-LAND	
CDFA		non-CDFA			
DA/MDA(H) 890' (521')		MDA(H) 890' (521')			
A	RVR 1500m	RVR 2600m	Max Kts	MDA(H)	VIS
B			100	890' (516') I	1500m
C			135	890' (516') I	1600m
D	RVR 2400m	RVR 2800m	180	1130' (756') I	2400m
			205	1150' (776')	3600m

I or higher straight-in minimums.

Chart changes since cycle 09-2020

ADD = added chart, REV = revised chart, DEL = deleted chart.

ACT	PROCEDURE IDENT	INDEX	REV DATE	EFF DATE
-----	-----------------	-------	----------	----------

ZAPORIZHZHIA, (ZAPORIZHZHIA INTL - UKDE)

TERMINAL CHART CHANGE NOTICES

No Chart Change Notices for Airport UKDE