

List of pages in this Trip Kit

Trip Kit Index

Airport Information For UKDD

Terminal Charts For UKDD

Revision Letter For Cycle 10-2020

Change Notices

Notebook

General Information

Location: DNIPRO UKR
ICAO/IATA: UKDD / DNK
Lat/Long: N48° 21.4', E035° 06.0'
Elevation: 482 ft

Airport Use: Public
Daylight Savings: Observed
UTC Conversion: -2:00 = UTC
Magnetic Variation: 8.0° E

Repair Types: Major Airframe, Major Engine
Customs: Yes
Airport Type: IFR
Landing Fee: Yes
Control Tower: Yes
Jet Start Unit: No
LLWS Alert: No
Beacon: No

Sunrise: 0142 Z
Sunset: 1733 Z

Runway Information

Runway: 08
Length x Width: 9377 ft x 144 ft
Surface Type: concrete
TDZ-Elev: 475 ft
Lighting: Edge, ALS

Runway: 26
Length x Width: 9377 ft x 144 ft
Surface Type: concrete
TDZ-Elev: 472 ft
Lighting: Edge, ALS

Communication Information

ATIS: 130.900
ATIS: 134.900 Non-English
Dnipro Tower: 118.600
Dnipro Ground: 121.800
Dnipro Approach: 132.300
Dnipro Radar ACC: 119.400 RCO
Dnipro Information: 122.700 Flight Info Service RCO

1. GENERAL**1.1. ATIS**

ATIS 130.9
134.9 (Russian)

1.2. NOISE ABATEMENT PROCEDURES**1.2.1. GENERAL**

SID, STAR and Approach charts are based on minimizing the impact of aviation noise on settlements located around the aerodrome.

Minimum levels provided by an ATC when ACFT are under radar vectoring or direct routing include corrections for low temperature effect if the temperature is within the range from -28°C to -25°C inclusively.

1.2.2. NIGHT NOISE RESTRICTIONS FROM 2300-0600LT**1.2.2.1. TAXIING**

Taxiing of three-engined ACFT to be done with two side engines. Power while taxiing from stands A3, A5, A8 and A9 shall not be more than 0.6 of rated power.

1.2.2.2. RUN-UP TEST

Run-ups with take-off power are prohibited.

1.2.2.3. AUXILIARY POWER UNIT (APU)

Use limited to ± 30 minutes before departure/after landing.

1.3. LOW VISIBILITY PROCEDURES (LVP)

Criteria for the initiation and termination of LVP:

- The preparation phase will be implemented when RVR falls below 1000m;
- The operation phase will be implemented when the RVR falls to 550m;
- LVP will be terminated when RVR is greater than 550m and a continuing improvement in these conditions is anticipated;
- LVP will be apply only for departure operations;
- RWY 08/26 equipment and markings let apply departure operations under LVP conditions with RVR not below 400m;
- Pilots will be informed by ATIS or ATC when LVP are in operation;
- After receiving taxi clearance ACFT must taxi only behind Follow-me vehicle;
- Only single taxing ACFT is under control by Tower when LVP are in operation;
- Intersection take-offs are not permitted;
- ATC will designate the RWY in use according to the prevailing wind and RVR conditions.

1.4. TAXI PROCEDURES

For ground movement restrictions refer to 10-9 charts.

Taxiing to/from stands with Follow-me car only.

Taxiing on own thrust via TWY M4 is permitted only for ACFT of less than code 4C at daytime, in other cases taxiing via TWY M4 is carried out only by towing.

1.5. COMMUNICATION FAILURE

In case of communication failure light signals are emitted by Signal Light Gun.

1.6. OTHER INFORMATION

Birds in vicinity of APT.

UKDD/DNK
DNIPRO

JEPPESEN

8 MAY 20

10-1P1

Eff 21 May

DNIPRO, UKRAINE
AIRPORT BRIEFING

2. ARRIVAL

2.1. CONTINUOUS DESCENT OPERATIONS

CDO are authorized only if there is no system degradation that may affect a GNSS or ILS operation.

ATC will issue further descent instruction prior to the CDO flight reaching 900m (3000') from the last assigned level so as to prevent leveling off.

Pilots shall maintain MAX 220 KT at a distance of 20 track miles from touchdown.

Specified minimum levels must be adhered to unless specifically cancelled by ATC.

3. DEPARTURE

3.1. DE-ICING

Available at D1, D3 and stand C16.

3.2. START-UP

Start-up of engine during towing is prohibited.

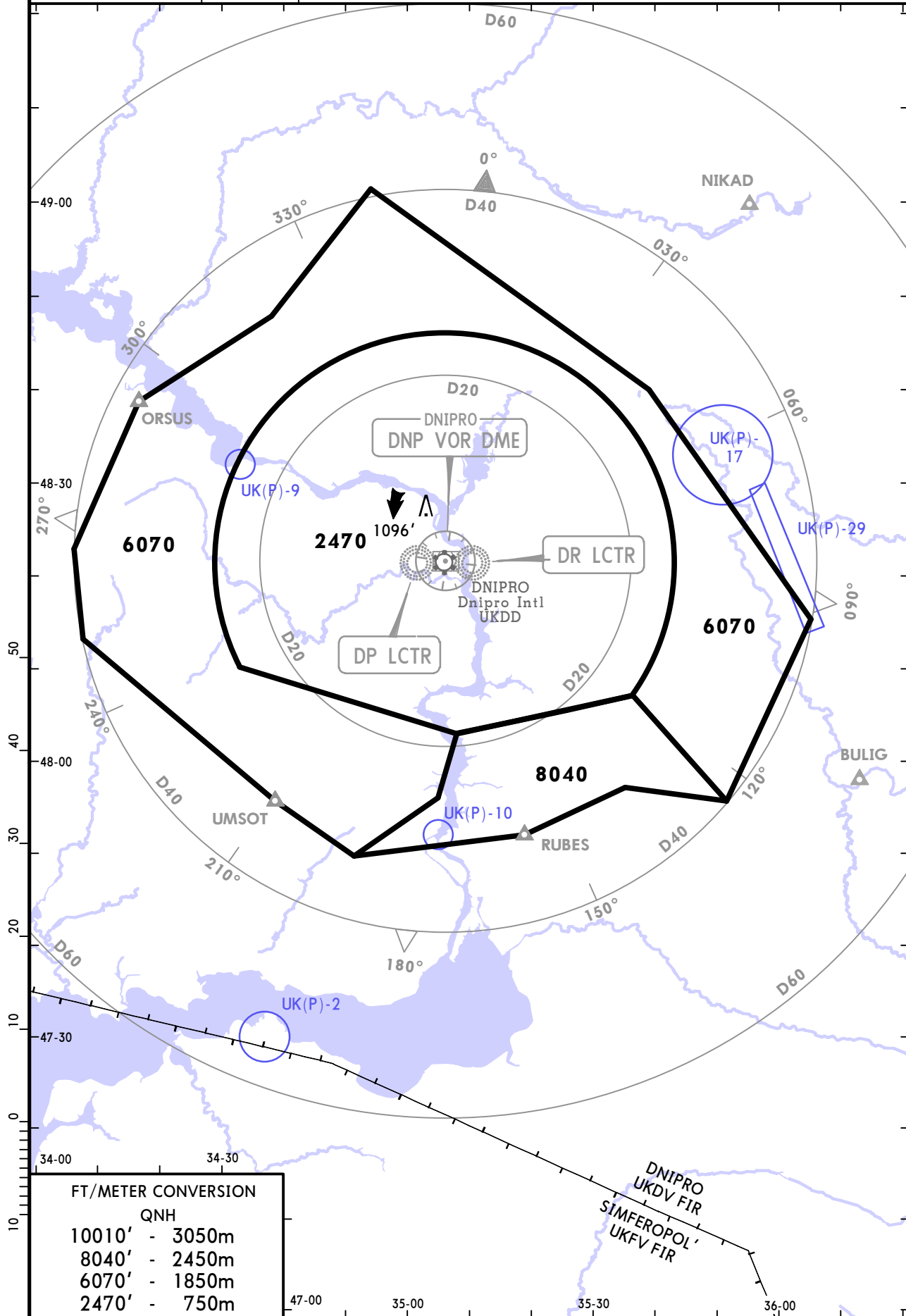
UKDD/DNK
DNIPRO INTL

JEPPESEN
17 MAY 19
10-1R Eff 23 May

DNIPRO, UKRAINE

RADAR MINIMUM ALTITUDES

DNIPRO Radar (APP) 119.4	Apt Elev 482'	Alt Set: hPa Trans level: By ATC Trans alt: 10010' 1. This chart may only be used for cross-checking of altitudes assigned while the aircraft identified. 2. Minimum Radar Vectoring Altitude are safe if the temperature at the surface is -24°C or above. For lower temperatures, corrected minimum levels will be provided by ATC.
---------------------------------------	-------------------------	--



FT/METER CONVERSION	
QNH	
10010'	- 3050m
8040'	- 2450m
6070'	- 1850m
2470'	- 750m

CHANGES: Airport name.

UKDD/DNK
DNIPRO INTL

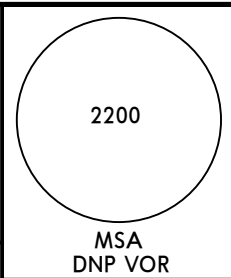
JEPPESEN
 17 MAY 19 **10-2** **Eff 23 May**

DNIPRO, UKRAINE
RNAV STAR

ATIS
130.9 (Russian **134.9**)

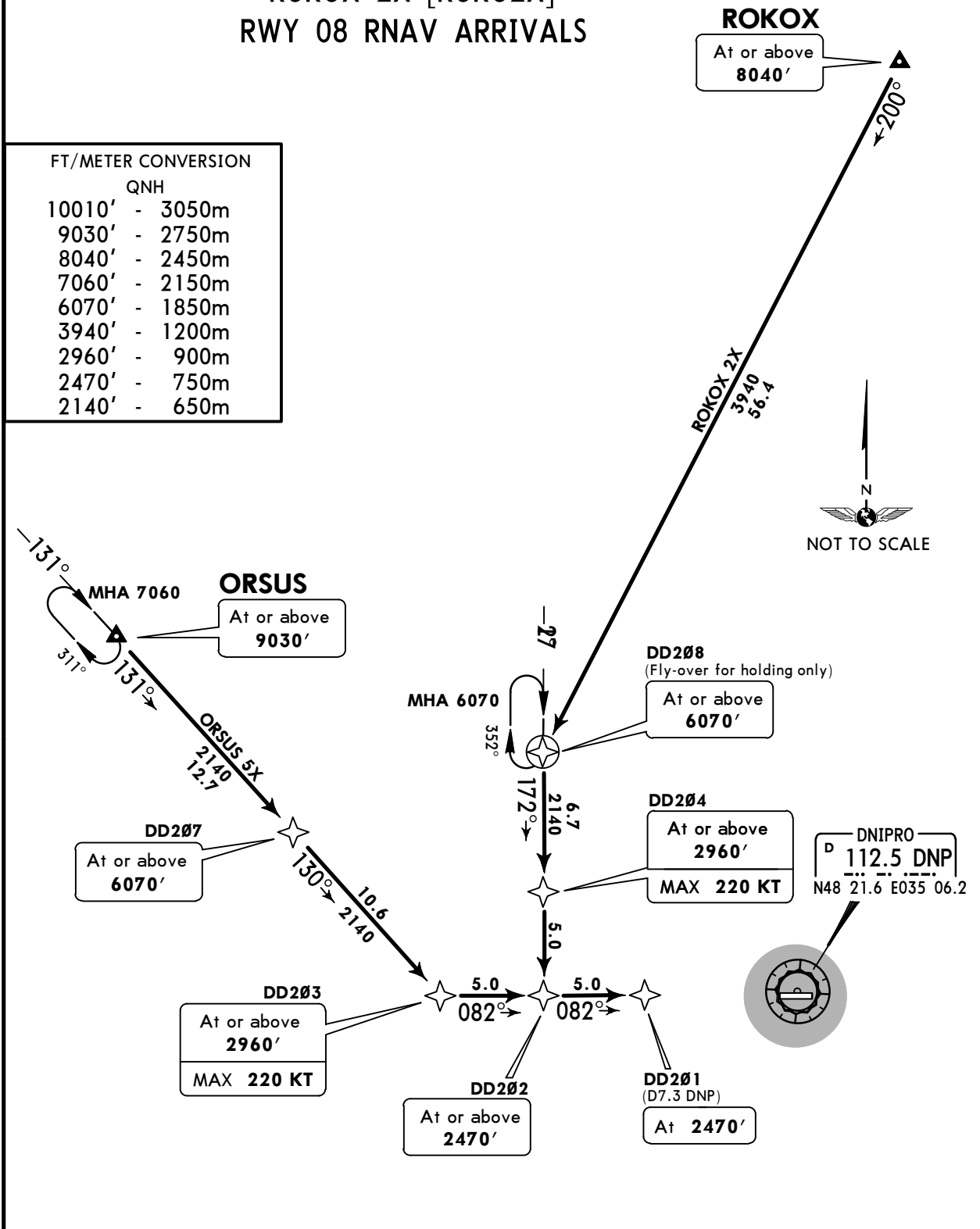
Apt Elev
482'

Alt Set: hPa
 Trans level: By ATC Trans alt: 10010'
 1. RNAV 1 (GNSS).
 2. RNAV-1 (P-RNAV) approval required otherwise advise ATC.
 3. EXPECT ILS or NDB approach on DD201.
 4. For CDO instructions refer to 10-1P pages.



ORSUS 5X [ORSU5X]
ROKOX 2X [ROK02X]
RWY 08 RNAV ARRIVALS

FT/METER CONVERSION	
QNH	
10010'	- 3050m
9030'	- 2750m
8040'	- 2450m
7060'	- 2150m
6070'	- 1850m
3940'	- 1200m
2960'	- 900m
2470'	- 750m
2140'	- 650m



STAR	ROUTING
ORSUS 5X	ORSUS (9030'+) - DD207 (6070'+) - DD203 (2960'+; K220-) - DD202 (2470'+) - DD201 (2470').
ROKOX 2X	ROKOX (8040'+) - DD208 (6070'+) - DD204 (2960'+; K220-) - DD202 (2470'+) - DD201 (2470').

UKDD/DNK
DNIPRO INTL

JEPESEN
 17 MAY 19 **10-2A** **Eff 23 May**

DNIPRO, UKRAINE
RNAV STAR

2200
 MSA
 DNP VOR

ATIS
130.9 (Russian 134.9)
 Apt Elev
482'

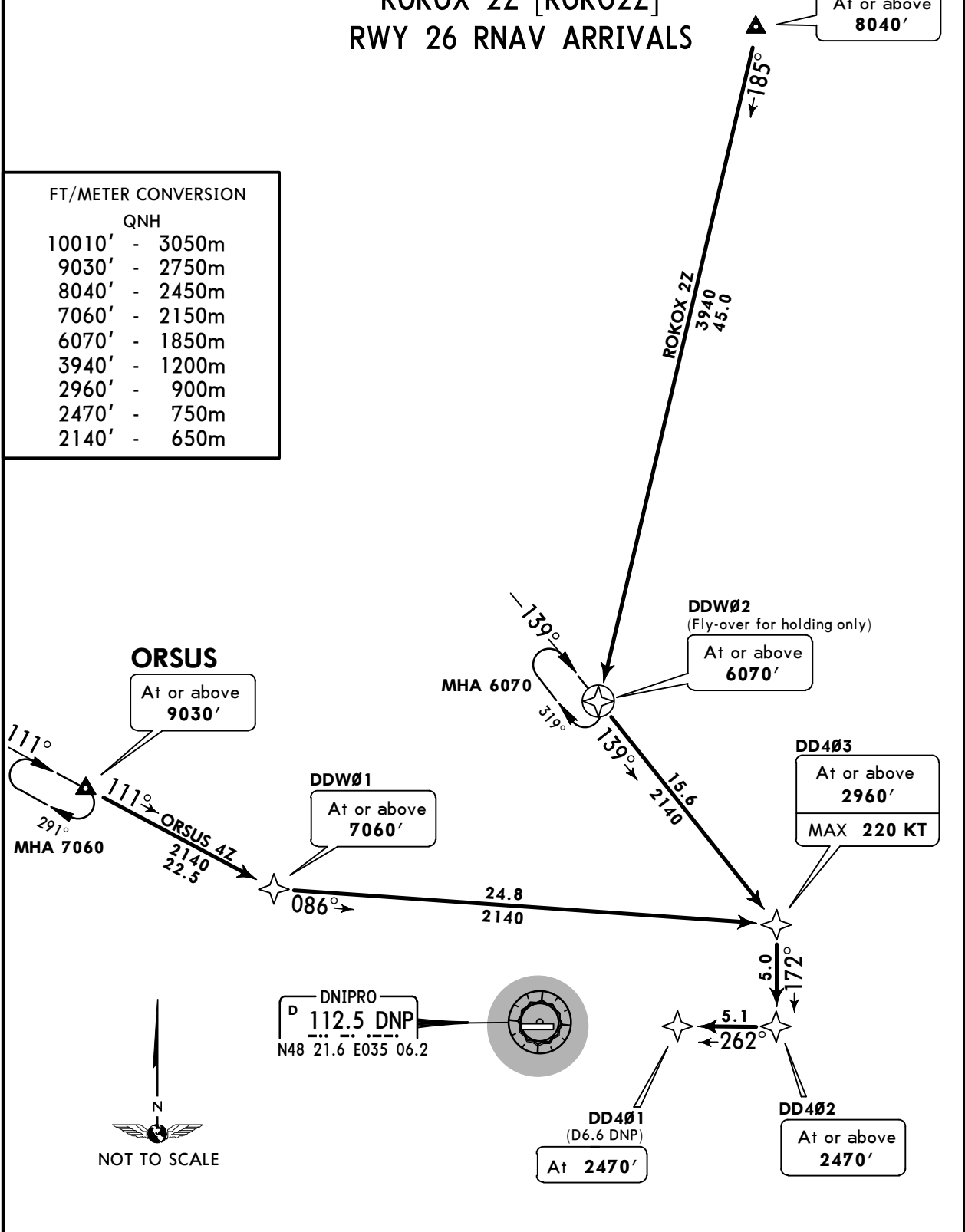
Alt Set: hPa
 Trans level: By ATC Trans alt: 10010'
 1. RNAV 1 (GNSS)
 2. RNAV-1 (P-RNAV) approval required otherwise advise ATC
 3. EXPECT ILS or NDB approach on DD401.
 4. For CDO instructions refer to 10-1P pages.

ORSUS 4Z [ORSU4Z]
ROKOX 2Z [ROK02Z]
RWY 26 RNAV ARRIVALS

ROKOX
 At or above
8040'

FT/METER CONVERSION

QNH	
10010'	3050m
9030'	2750m
8040'	2450m
7060'	2150m
6070'	1850m
3940'	1200m
2960'	900m
2470'	750m
2140'	650m



STAR	ROUTING
ORSUS 4Z	ORSUS (9030'+) - DDW01 (7060'+) - DD403 (2960'+; K220-) - DD402 (2470'+) - DD401 (2470').
ROKOX 2Z	ROKOX (8040'+) - DDW02 (6070'+) - DD403 (2960'+; K220-) - DD402 (2470'+) - DD401 (2470').

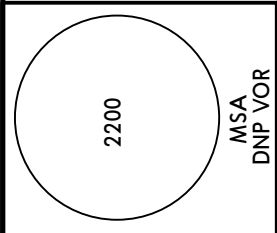
UKDD/DNK
DNIPRO INTL

JEPPESSEN
17 MAY 19 (10-2B) Eff 23 May

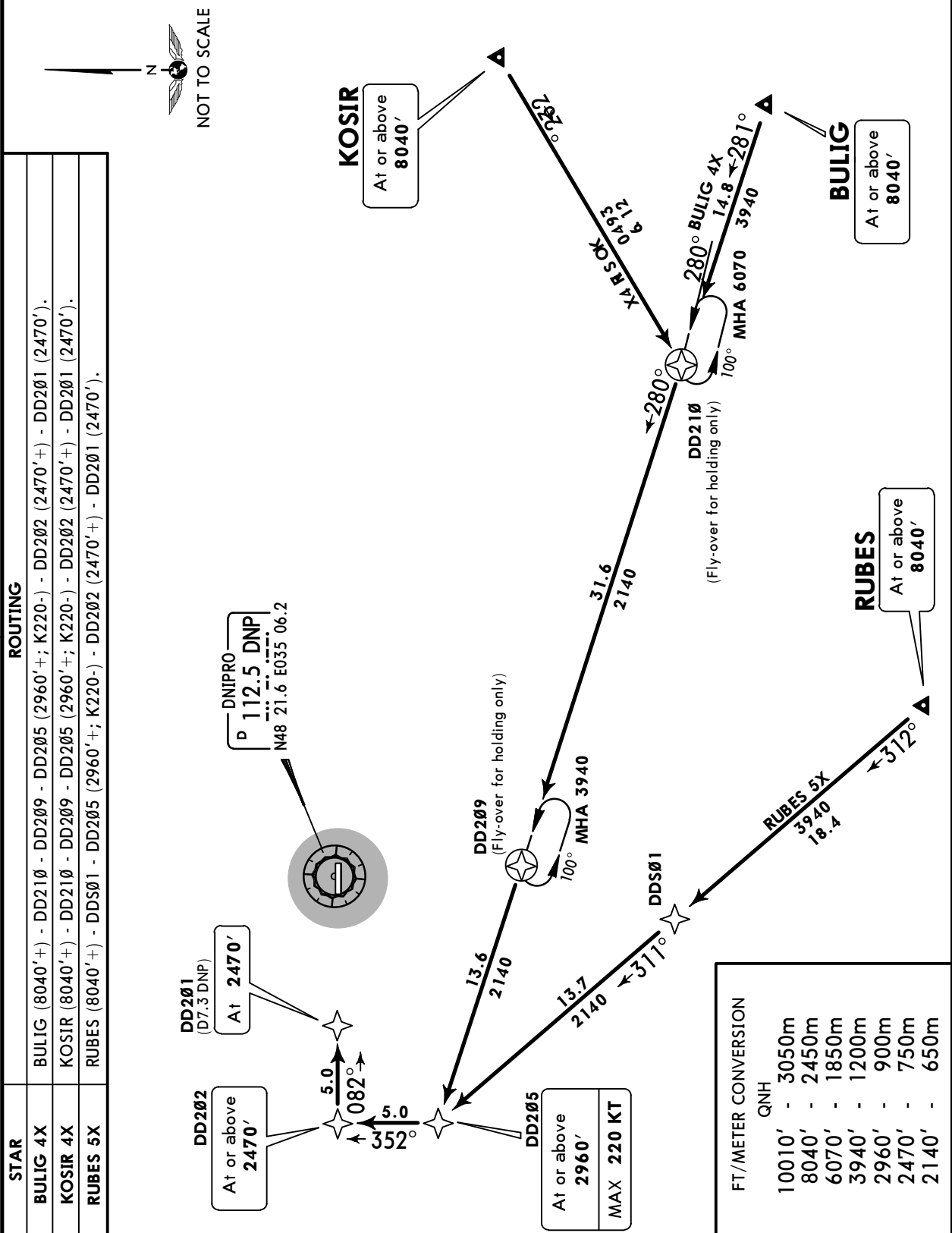
DNIPRO, UKRAINE
RNAV STAR

ATIS
130.9 (Russian 134.9)
Apt Elev 482'

- Alt Set: hPa
Trans level: By ATC Trans alt: 10010'
1. RNAV 1 (GNSS).
 2. RNAV-1 (P-RNAV) approval required otherwise advise ATC.
 3. EXPECT ILS or NDB approach on DD201.
 4. For CDO instructions refer to 10-1P pages.



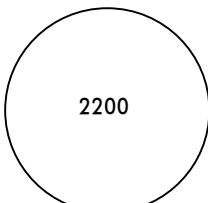
BULIG 4X [BULI4X]
KOSIR 4X [KOSI4X]
RUBES 5X [RUBE5X]
RWY 08 RNAV ARRIVALS



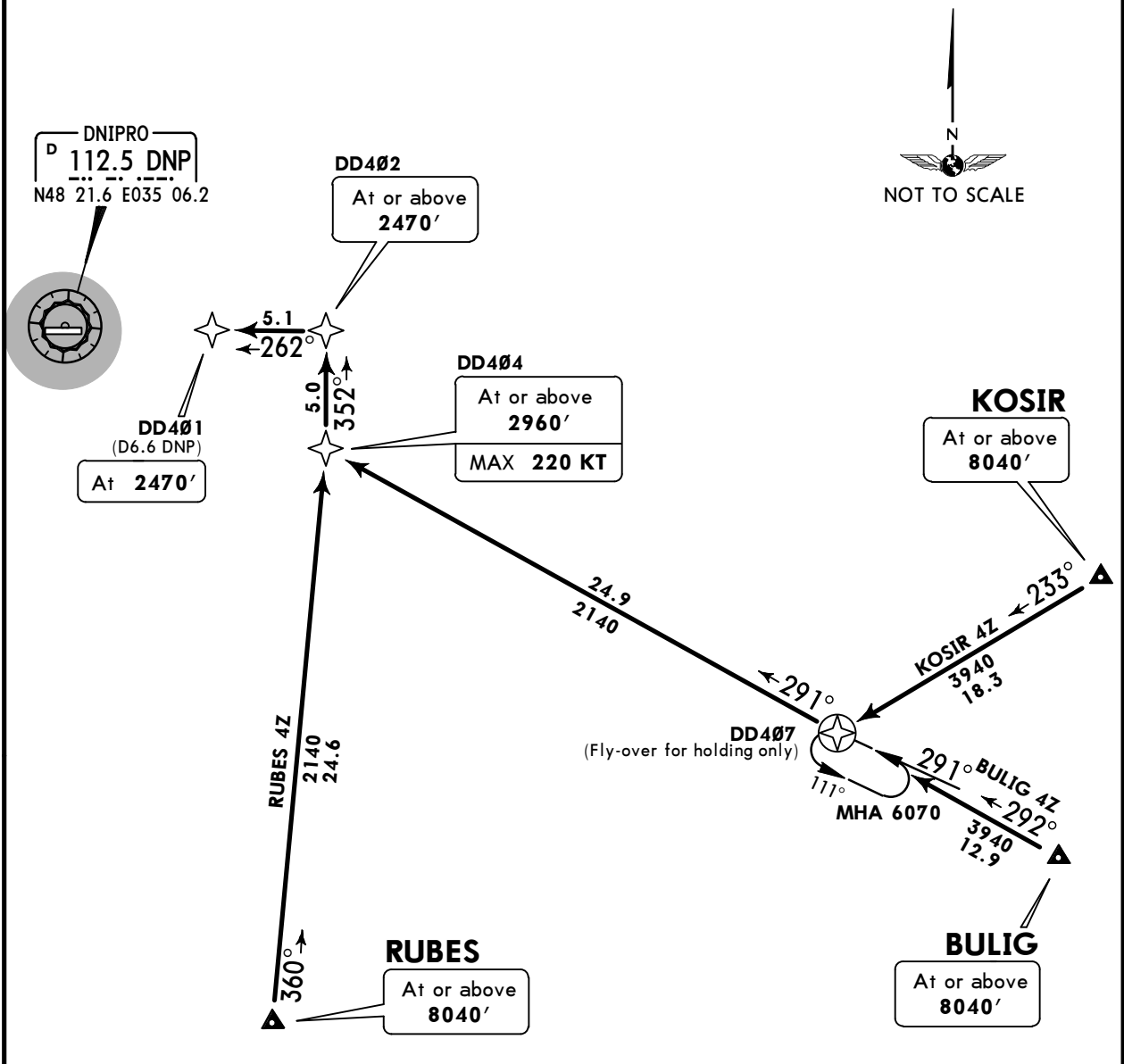
UKDD/DNK
DNIPRO INTL

JEPPESEN
17 MAY 19 **10-2C** **Eff 23 May**

DNIPRO, UKRAINE
RNAV STAR

ATIS 130.9 (Russian 134.9)	Apt Elev 482'	Alt Set: hPa Trans level: By ATC Trans alt: 10010' 1. RNAV 1 (GNSS). 2. RNAV-1 (P-RNAV) approval required otherwise advise ATC. 3. EXPECT ILS or NDB approach on DD401. 4. For CDO instructions refer to 10-1P pages.	 2200 MSA DNP VOR
--	-------------------------	--	---

BULIG 4Z [BULI4Z]
KOSIR 4Z [KOSI4Z]
RUBES 4Z [RUBE4Z]
RWY 26 RNAV ARRIVALS



FT/METER CONVERSION	
QNH	
10010'	- 3050m
8040'	- 2450m
6070'	- 1850m
3940'	- 1200m
2960'	- 900m
2470'	- 750m
2140'	- 650m

STAR	ROUTING
BULIG 4Z	BULIG (8040'+) - DD407 - DD404 (2960'+; K220-) - DD402 (2470'+) - DD401 (2470').
KOSIR 4Z	KOSIR (8040'+) - DD407 - DD404 (2960'+; K220-) - DD402 (2470'+) - DD401 (2470').
RUBES 4Z	RUBES (8040'+) - DD404 (2960'+; K220-) - DD402 (2470'+) - DD401 (2470').

UKDD/DNK
DNIPRO INTL

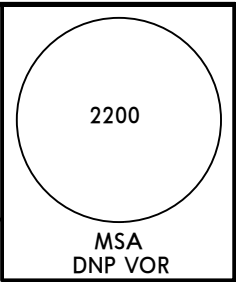
JEPESEN
 17 MAY 19 **(10-2D)** **Eff 23 May**

DNIPRO, UKRAINE
RNAV STAR

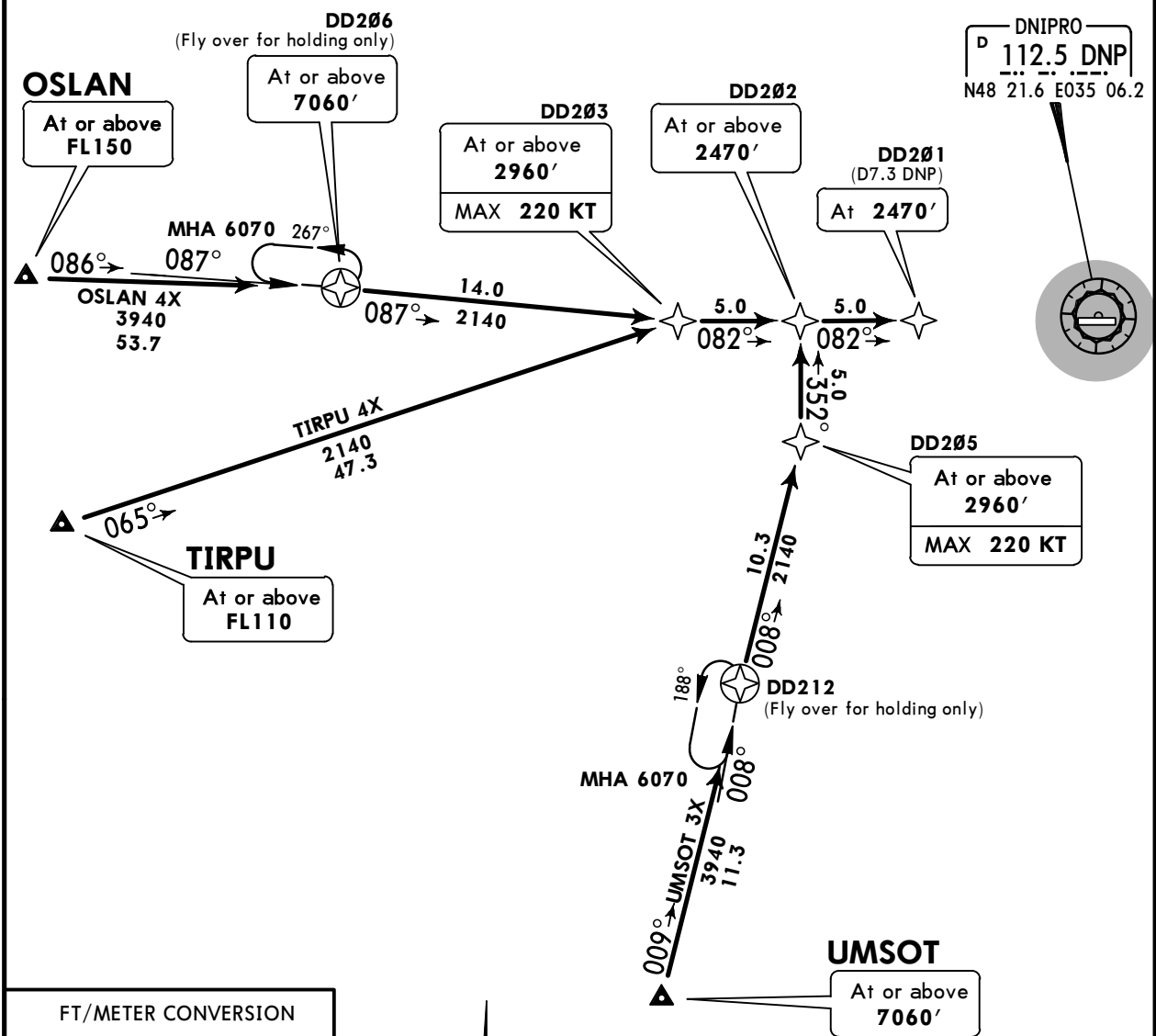
ATIS
130.9 (Russian **134.9**)

Apt Elev
482'

Alt Set: hPa
 Trans level: By ATC Trans alt: 10010'
 1. RNAV 1 (GNSS).
 2. RNAV-1 (P-RNAV) approval required otherwise advise ATC.
 3. EXPECT ILS or NDB approach on DD201.
 4. For CDO instructions refer to 10-1P pages.



OSLAN 4X [OSLA4X]
TIRPU 4X [TIRP4X]
UMSOT 3X [UMSO3X]
RWY 08 RNAV ARRIVALS



FT/METER CONVERSION

	QNH
10010'	- 3050m
7060'	- 2150m
6070'	- 1850m
3940'	- 1200m
2960'	- 900m
2470'	- 750m
2140'	- 650m

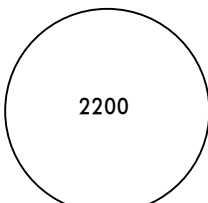


STAR	ROUTING
OSLAN 4X	OSLAN (FL150+) - DD206 (7060'+) - DD203 (2960'+; K220-) - DD202 (2470'+) - DD201 (2470').
TIRPU 4X	TIRPU (FL110+) - DD203 (2960'+; K220-) - DD202 (2470'+) - DD201 (2470').
UMSOT 3X	UMSOT (7060'+) - DD212 - DD205 (2960'+; K220-) - DD202 (2470'+) - DD201 (2470').

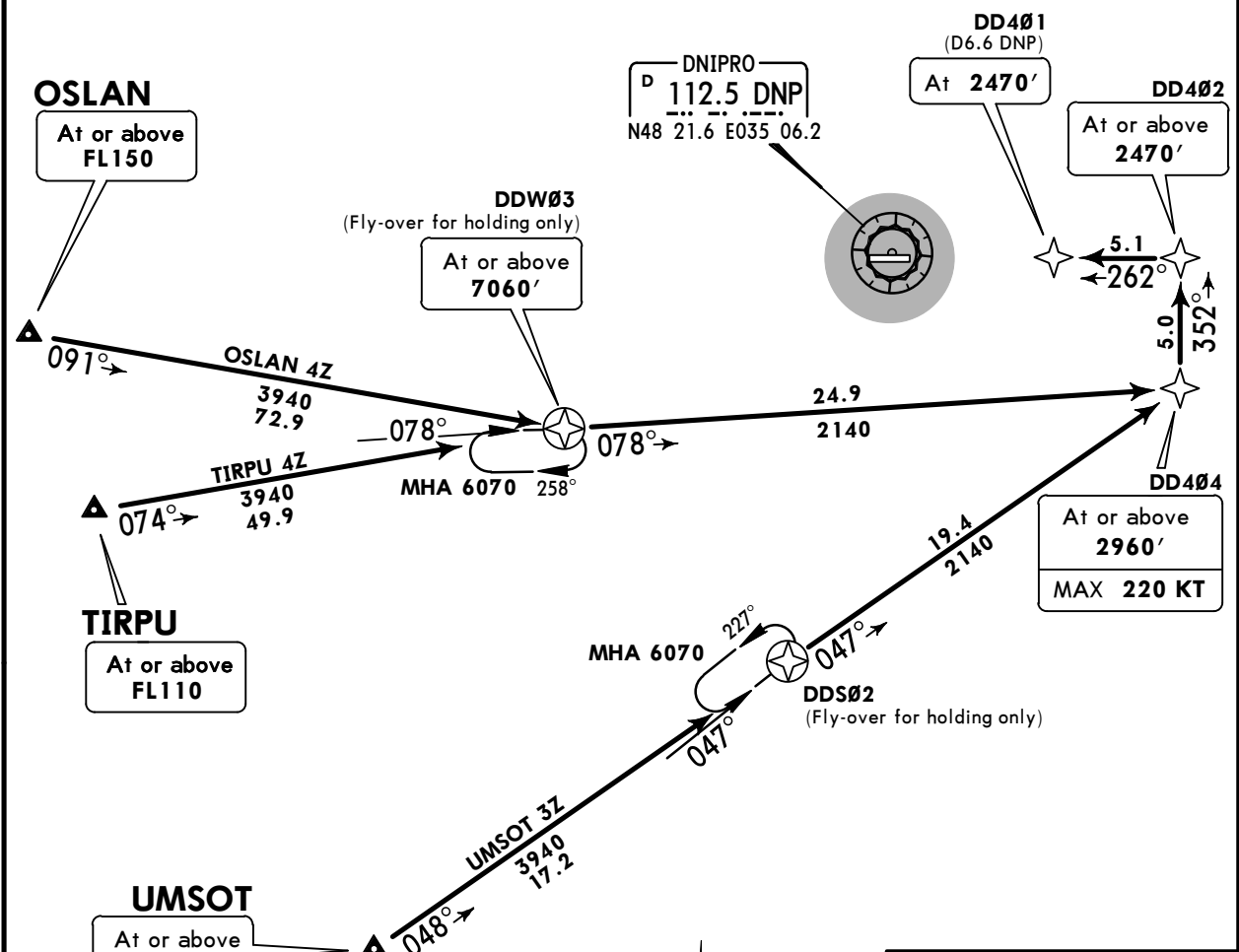
UKDD/DNK
DNIPRO INTL

JEPPESEN
17 MAY 19 (10-2E) Eff 23 May

DNIPRO, UKRAINE
RNAV STAR

ATIS 130.9 (Russian 134.9)	Apt Elev 482'	Alt Set: hPa Trans level: By ATC Trans alt: 10010' 1. RNAV 1 (GNSS). 2. RNAV-1 (P-RNAV) approval required otherwise advise ATC. 3. EXPECT ILS or NDB approach on DD401. 4. For CDO instructions refer to 10-1P pages.	 <p>2200 MSA DNP VOR</p>
-------------------------------	------------------	--	---

OSLAN 4Z [OSLA4Z]
TIRPU 4Z [TIRP4Z]
UMSOT 3Z [UMSO3Z]
RWY 26 RNAV ARRIVALS



FT/METER CONVERSION	
QNH	
10010'	- 3050m
7060'	- 2150m
6070'	- 1850m
3940'	- 1200m
2960'	- 900m
2470'	- 750m
2140'	- 650m



STAR	ROUTING
OSLAN 4Z	OSLAN (FL150+) - DDW03 (7060'+) - DD404 (2960'+; K220-) - DD402 (2470'+) - DD401 (2470').
TIRPU 4Z	TIRPU (FL110+) - DDW03 (7060'+) - DD404 (2960'+; K220-) - DD402 (2470'+) - DD401 (2470').
UMSOT 3Z	UMSOT (7060'+) - DDS02 - DD404 (2960'+; K220-) - DD402 (2470'+) - DD401 (2470').

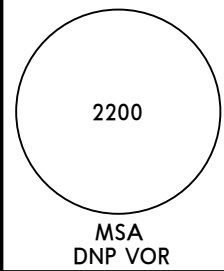
UKDD/DNK
DNIPRO INTL

JEPPESEN
17 MAY 19 **10-2F** **Eff 23 May**

DNIPRO, UKRAINE

STAR

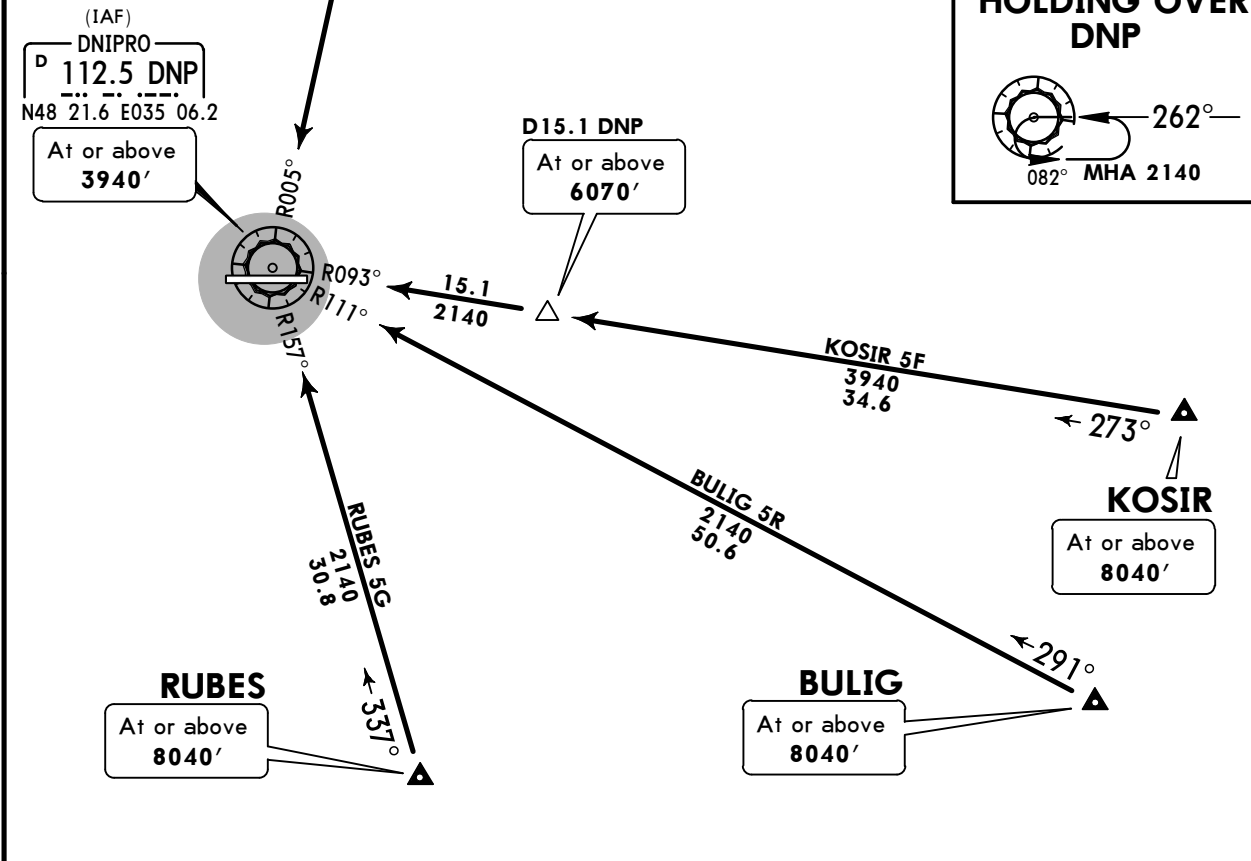
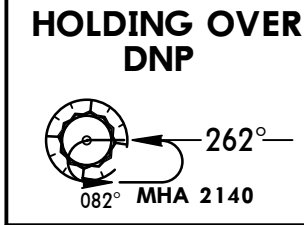
ATIS 130.9 (Russian 134.9)	Apt Elev 482'	Alt Set: hPa Trans level: By ATC Trans alt: 10010'
--	-------------------------	---



BULIG 5R [BULI5R]
KOSIR 5F [KOSI5F]
ROKOX 2R [ROKO2R]
RUBES 5G [RUBE5G]
RWY 08 ARRIVALS



FT/METER CONVERSION	
QNH	
10010'	- 3050m
8040'	- 2450m
6070'	- 1850m
3940'	- 1200m
2140'	- 650m

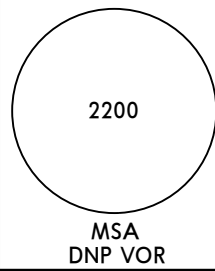


STAR	ROUTING
BULIG 5R	Intercept DNP R-111 inbound to DNP VOR.
KOSIR 5F By ATC	Intercept DNP R-093 inbound to DNP VOR.
ROKOX 2R	Intercept DNP R-005 inbound to DNP VOR.
RUBES 5G	Intercept DNP R-157 inbound to DNP VOR.

UKDD/DNK
DNIPRO INTL

JEPESEN
17 MAY 19 **10-2G** Eff 23 May

DNIPRO, UKRAINE
STAR

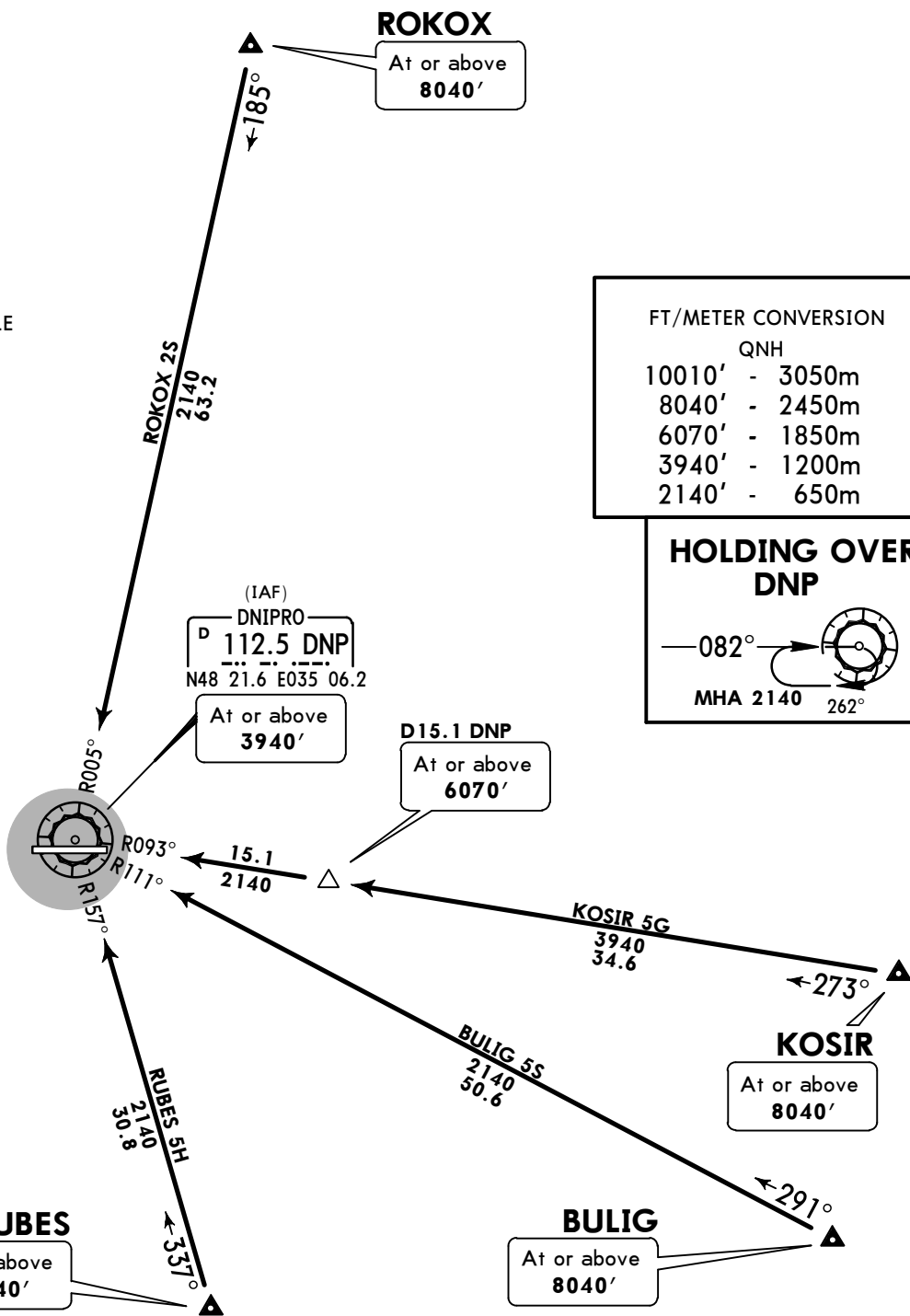
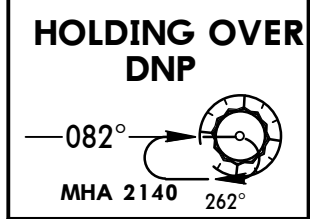
ATIS 130.9 (Russian 134.9)	Apt Elev 482'	Alt Set: hPa Trans level: By ATC Trans alt: 10010'	 <p>2200 MSA DNP VOR</p>
--	-------------------------	---	---

BULIG 5S [BULI5S]
KOSIR 5G [KOSI5G]
ROKOX 2S [ROK02S]
RUBES 5H [RUBE5H]
RWY 26 ARRIVALS



ROKOX
At or above
8040'

FT/METER CONVERSION	
QNH	
10010'	- 3050m
8040'	- 2450m
6070'	- 1850m
3940'	- 1200m
2140'	- 650m



STAR	ROUTING
BULIG 5S	Intercept DNP R-111 inbound to DNP VOR.
KOSIR 5G By ATC	Intercept DNP R-093 inbound to DNP VOR.
ROKOX 2S	Intercept DNP R-005 inbound to DNP VOR.
RUBES 5H	Intercept DNP R-157 inbound to DNP VOR.

UKDD/DNK
DNIPRO INTL



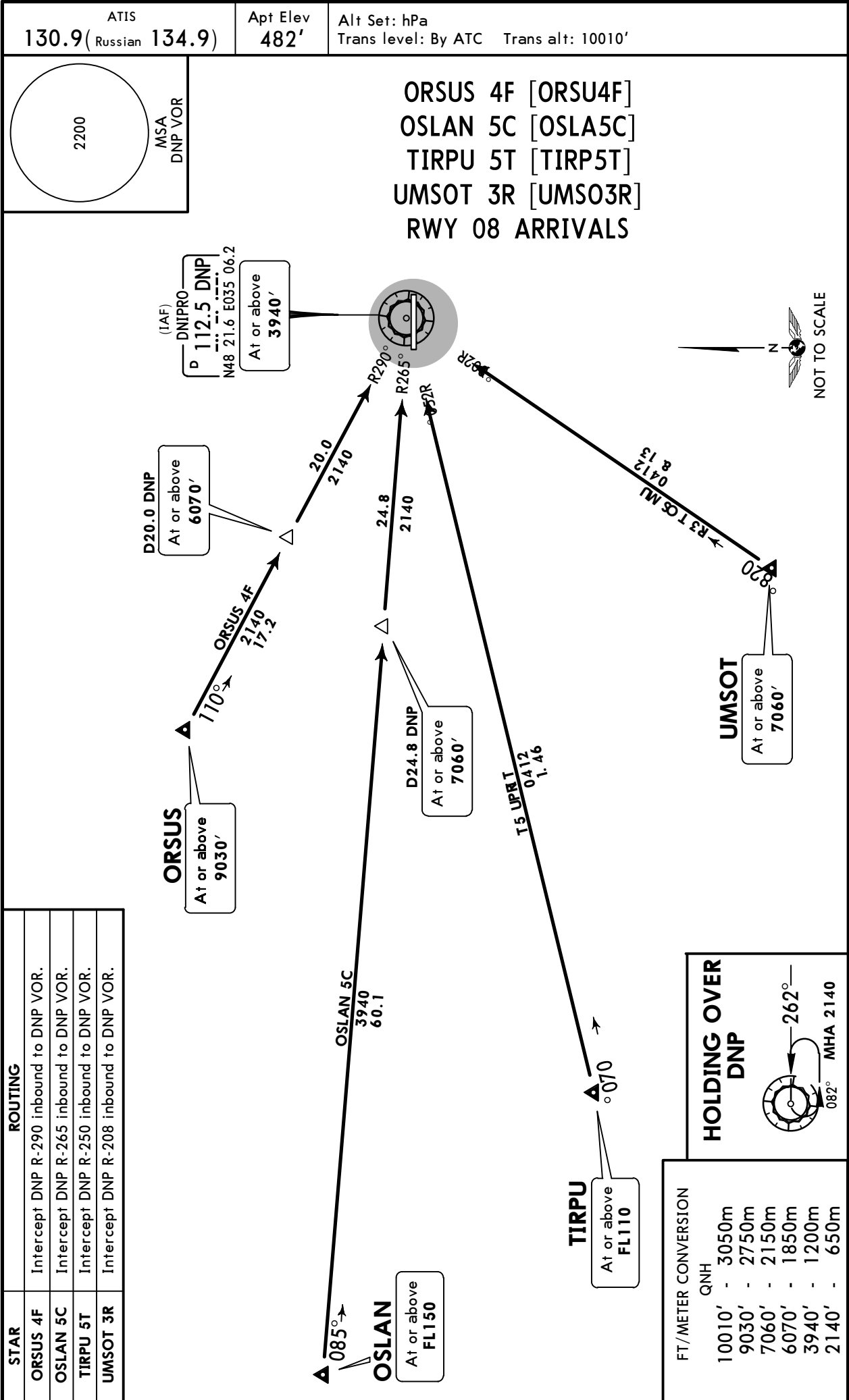
17 MAY 19

10-2H

Eff 23 May

DNIPRO, UKRAINE

STAR



UKDD/DNK
DNIPRO INTL



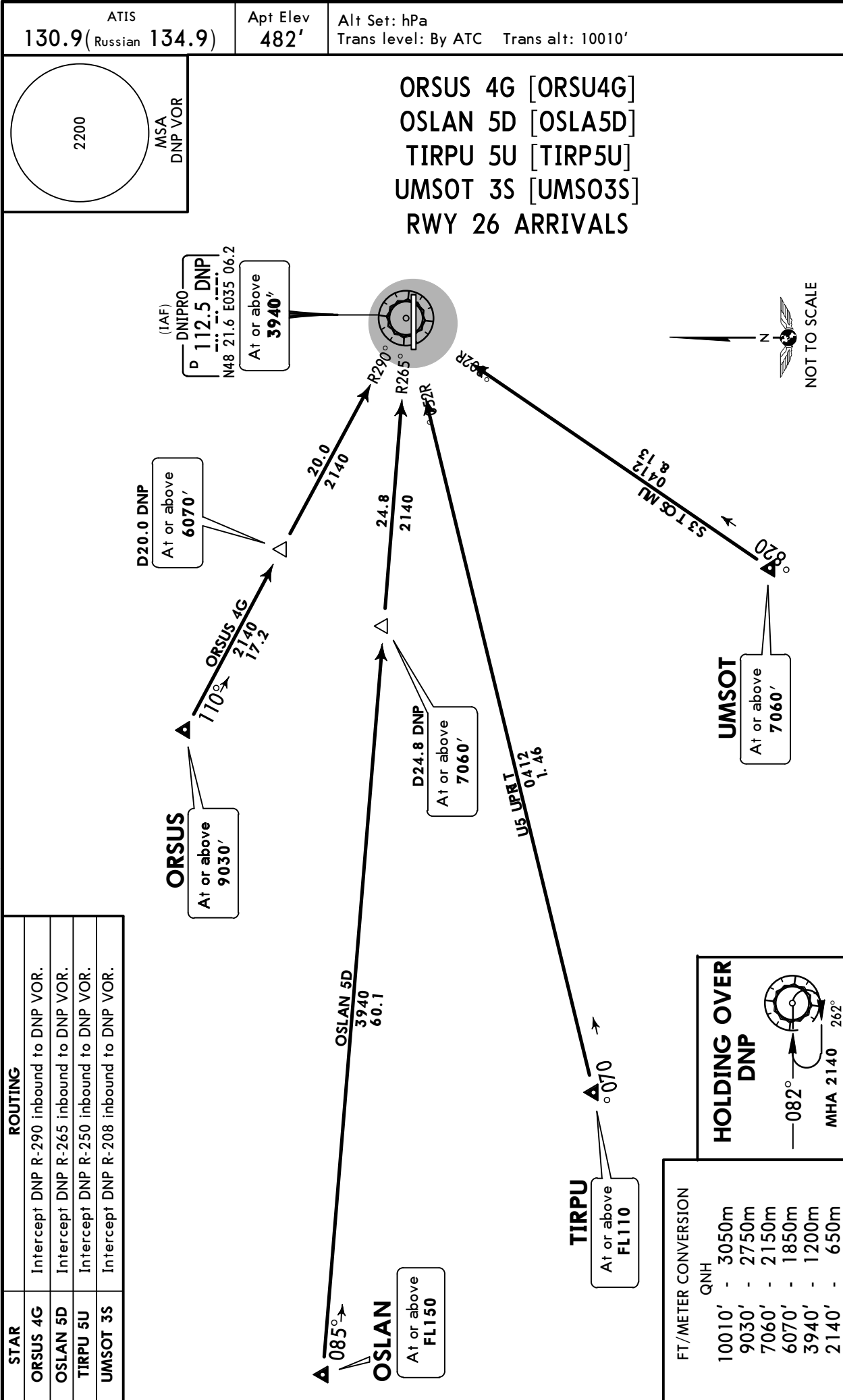
DNIPRO, UKRAINE

17 MAY 19

10-2J

Eff 23 May

STAR



STAR	ROUTING
ORSUS 4G	Intercept DNP R-290 inbound to DNP VOR.
OSLAN 5D	Intercept DNP R-265 inbound to DNP VOR.
TIRPU 5U	Intercept DNP R-250 inbound to DNP VOR.
UMSOT 3S	Intercept DNP R-208 inbound to DNP VOR.

FT/METER CONVERSION	
QNH	
10010'	- 3050m
9030'	- 2750m
7060'	- 2150m
6070'	- 1850m
3940'	- 1200m
2140'	- 650m

UKDD/DNK
DNIPRO INTL

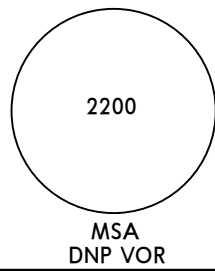
JEPPESEN
17 MAY 19 **10-3** **Eff 23 May**

DNIPRO, UKRAINE
RNAV SID

Apt Elev
482'

Trans level: By ATC Trans alt: 10010'

1. RNAV 1 (GNSS).
2. RNAV 1 (P-RNAV) approval required otherwise advise ATC.
3. If unable to comply SID procedures advise ATC.

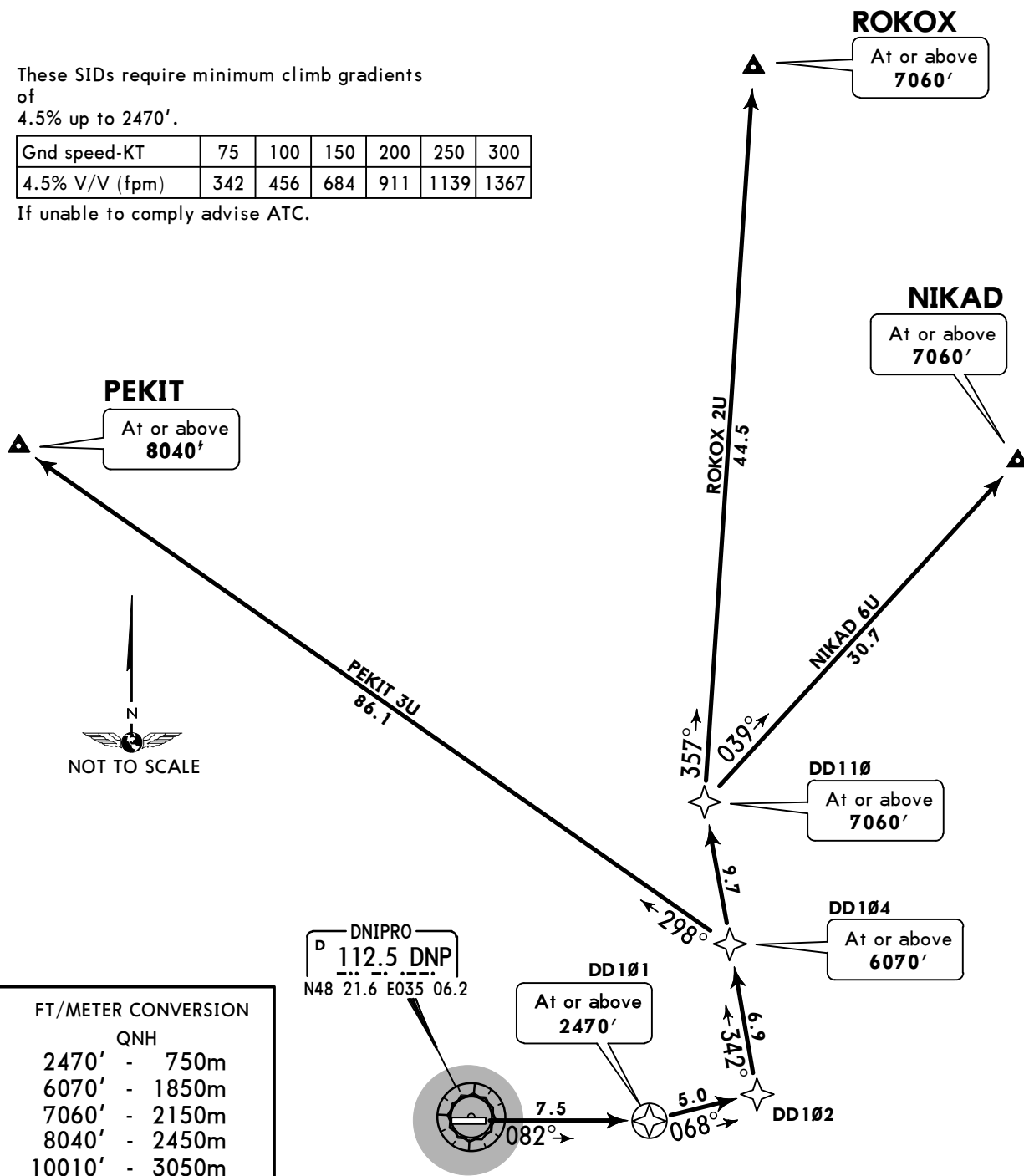


NIKAD 6U [NIKA6U]
PEKIT 3U [PEKI3U]
ROKOX 2U [ROK02U]
RWY 08 RNAV DEPARTURES

These SIDs require minimum climb gradients of 4.5% up to 2470'.

Gnd speed-KT	75	100	150	200	250	300
4.5% V/V (fpm)	342	456	684	911	1139	1367

If unable to comply advise ATC.



SID	ROUTING
NIKAD 6U	DD101 (2470'+) - DD102 - DD104 (6070'+) - DD110 (7060+) - NIKAD (7060+).
PEKIT 3U	DD101 (2470'+) - DD102 - DD104 (6070'+) - PEKIT (8040'+).
ROKOX 2U	DD101 (2470'+) - DD102 - DD104 (6070'+) - DD110 (7060+) - ROKOX (7060'+).

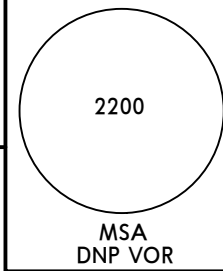
UKDD/DNK
DNIPRO INTL

JEPPESEN
17 MAY 19 (10-3A) Eff 23 May

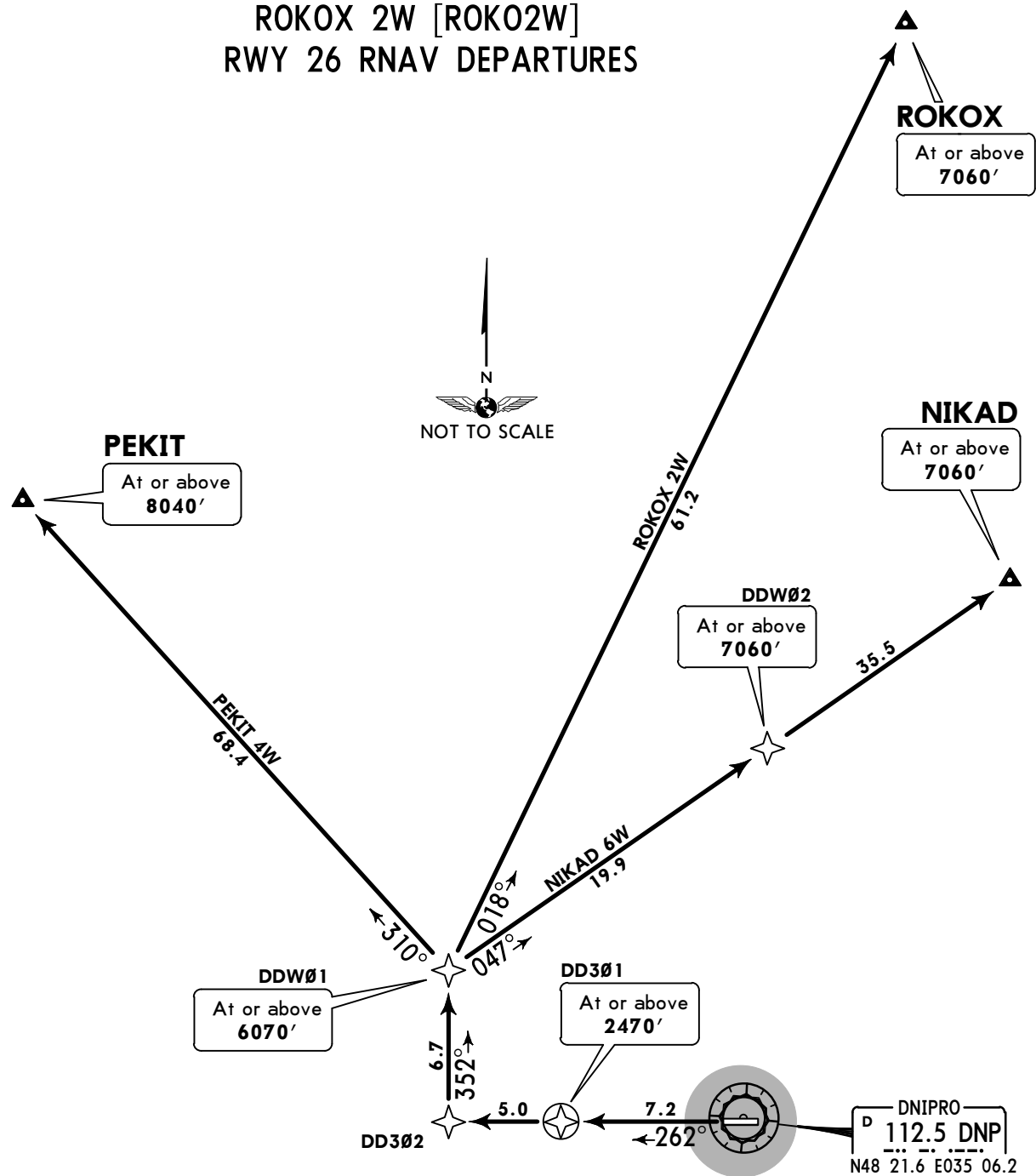
DNIPRO, UKRAINE
RNAV SID

Apt Elev
482'

Trans level: By ATC Trans alt: 10010'
1. RNAV 1 (GNSS).
2. RNAV 1 (P-RNAV) approval required otherwise advise ATC.
3. If unable to comply SID procedures advise ATC.



NIKAD 6W [NIKA6W]
PEKIT 4W [PEKI4W]
ROKOX 2W [ROK02W]
RWY 26 RNAV DEPARTURES



These SIDs require a minimum climb gradient of 5.0% up to 2470'.

Gnd speed-KT	75	100	150	200	250	300
5.0% V/V (fpm)	380	506	760	1013	1266	1519

If unable to comply advise ATC.

FT/METER CONVERSION	
QNH	
2470'	- 750m
6070'	- 1850m
7060'	- 2150m
8040'	- 2450m
10010'	- 3050m

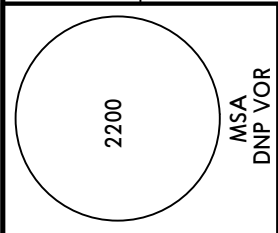
SID	ROUTING
NIKAD 6W	DD301 (2470'+) - DD302 - DDW01 (6070'+) - DDW02 (7060'+) - NIKAD (7060'+).
PEKIT 4W	DD301 (2470'+) - DD302 - DDW01 (6070'+) - PEKIT (8040'+).
ROKOX 2W	DD301 (2470'+) - DD302 - DDW01 (6070'+) - ROKOX (7060'+).

UKDD/DNK
DNIPRO INTL

JEPPESEN
17 MAY 19 (10-3B) Eff 23 May

DNIPRO, UKRAINE
RNAV SID

Apt Elev 482'
Trans level: By ATC Trans alt: 10010'
1. RNAV 1 (GNSS).
2. RNAV 1 (P-RNAV) approval required otherwise advise ATC.
3. If unable to comply SID procedures advise ATC.



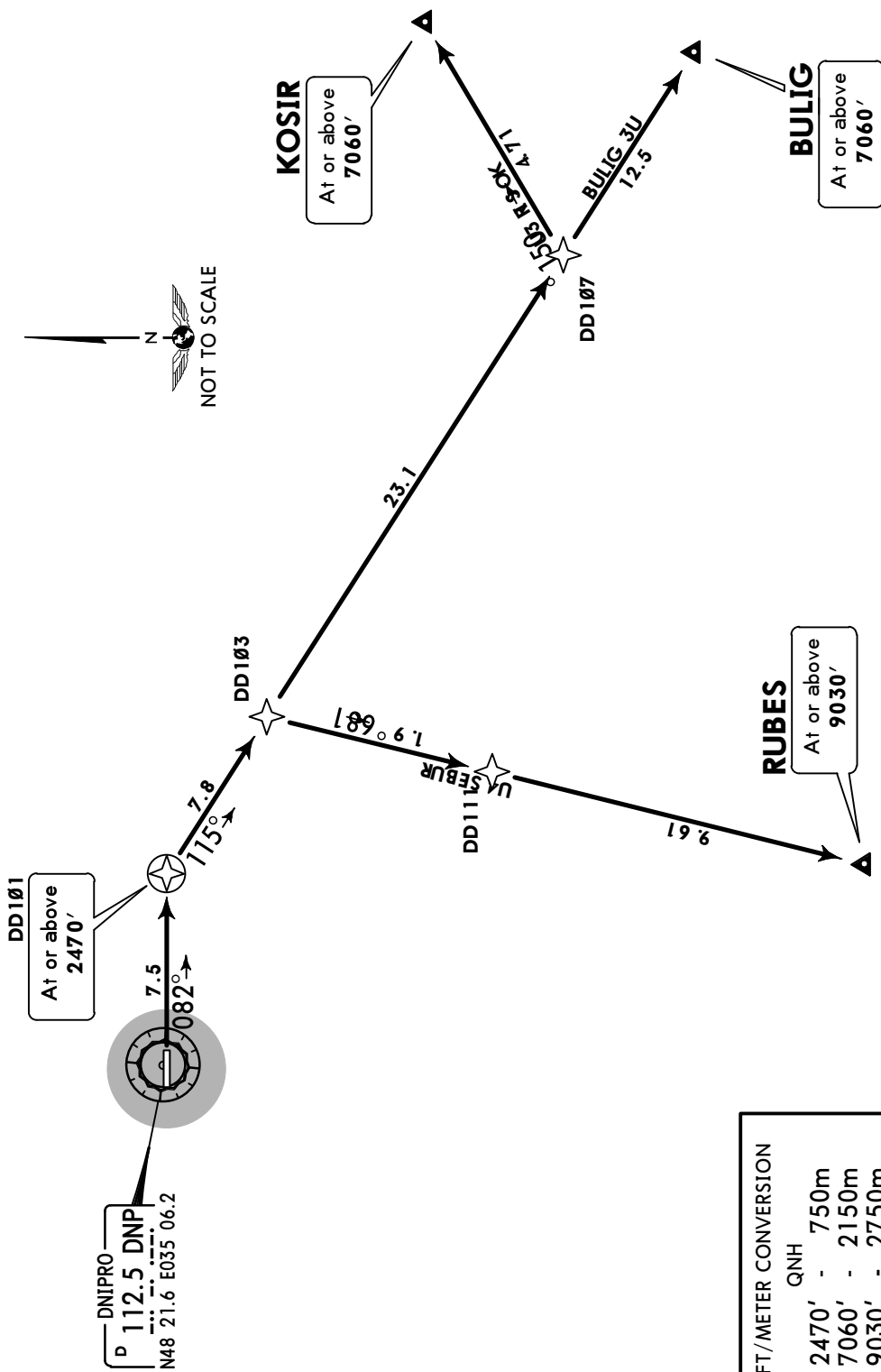
BULIG 3U [BULI3U]
KOSIR 3U [KOSI3U]
RUBES 4U [RUBE4U]
RWY 08 RNAV DEPARTURES

These SIDs require a minimum climb gradient of 4.5% up to 2470'.

Gnd speed-KT	75	100	150	200	250	300
4.5% V/V (fpm)	342	456	684	911	1139	1367

If unable to comply advise ATC.

SID	ROUTING
BULIG 3U	DD101 (2470'+) - DD103 - DD107 - BULIG (7060'+).
KOSIR 3U	DD101 (2470'+) - DD103 - DD107 - KOSIR (7060'+).
RUBES 4U	DD101 (2470'+) - DD111 - RUBES (9030'+).



FT/METER CONVERSION

QNH	FT	METER
2470'	-	750m
7060'	-	2150m
9030'	-	2750m
10010'	-	3050m

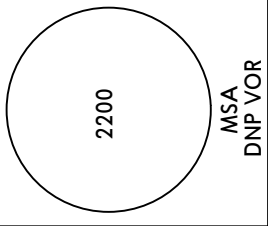
UKDD/DNK
DNIPRO INTL

JEPPESSEN
17 MAY 19 (10-3C) Eff 23 May

DNIPRO, UKRAINE
RNAV SID

Apt Elev
482'

Trans level: By ATC Trans alt: 10010'
1. RNAV 1 (GNSS).
2. RNAV 1 (P-RNAV) approval required otherwise advise ATC.
3. If unable to comply SID procedures advise ATC.



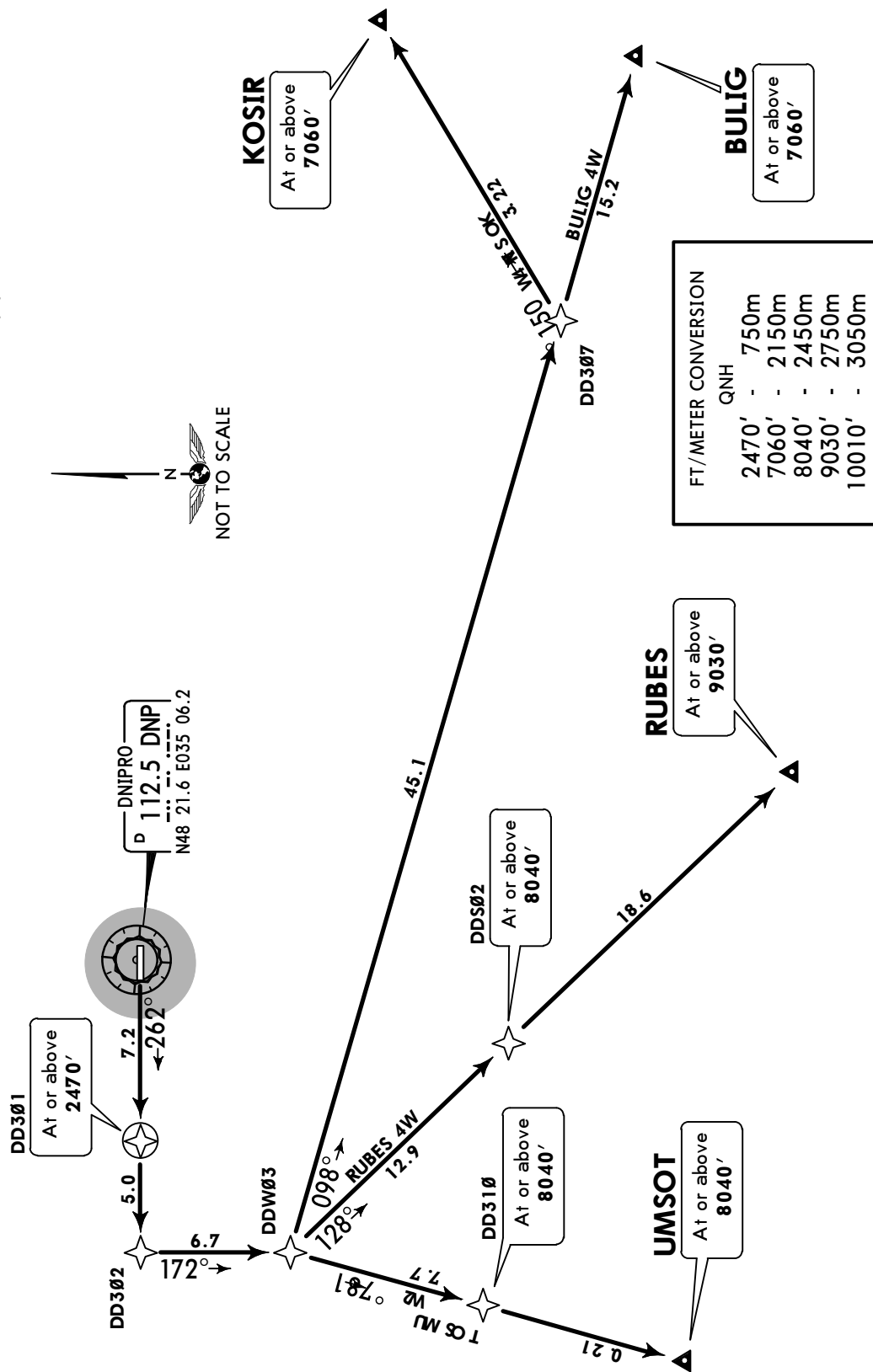
BULIG 4W [BULI4W]
KOSIR 4W [KOSI4W]
RUBES 4W [RUBE4W]
UMSOT 2W [UMSO2W]
RWY 26 RNAV DEPARTURES

These SIDs require a minimum climb gradient of 5% up to 2470'.

Gnd speed-KT	75	100	150	200	250	300
5% V/V (fpm)	380	506	760	1013	1266	1519

If unable to comply advise ATC.

SID	ROUTING
BULIG 4W	DD301 (2470'+) - DD302 - DDW03 - DD307 - BULIG (7060'+).
KOSIR 4W	DD301 (2470'+) - DD302 - DDW03 - DD307 - KOSIR (7060'+).
RUBES 4W	DD301 (2470'+) - DD302 - DDW03 - DDS02 (8040'+) - RUBES (9030'+).
UMSOT 2W	DD301 (2470'+) - DD302 - DDW03 - DD310 (8040'+) - UMSOT (8040'+).



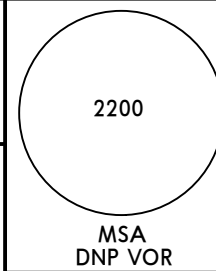
UKDD/DNK
DNIPRO INTL

JEPPESEN
17 MAY 19 **(10-3D)** **Eff 23 May**

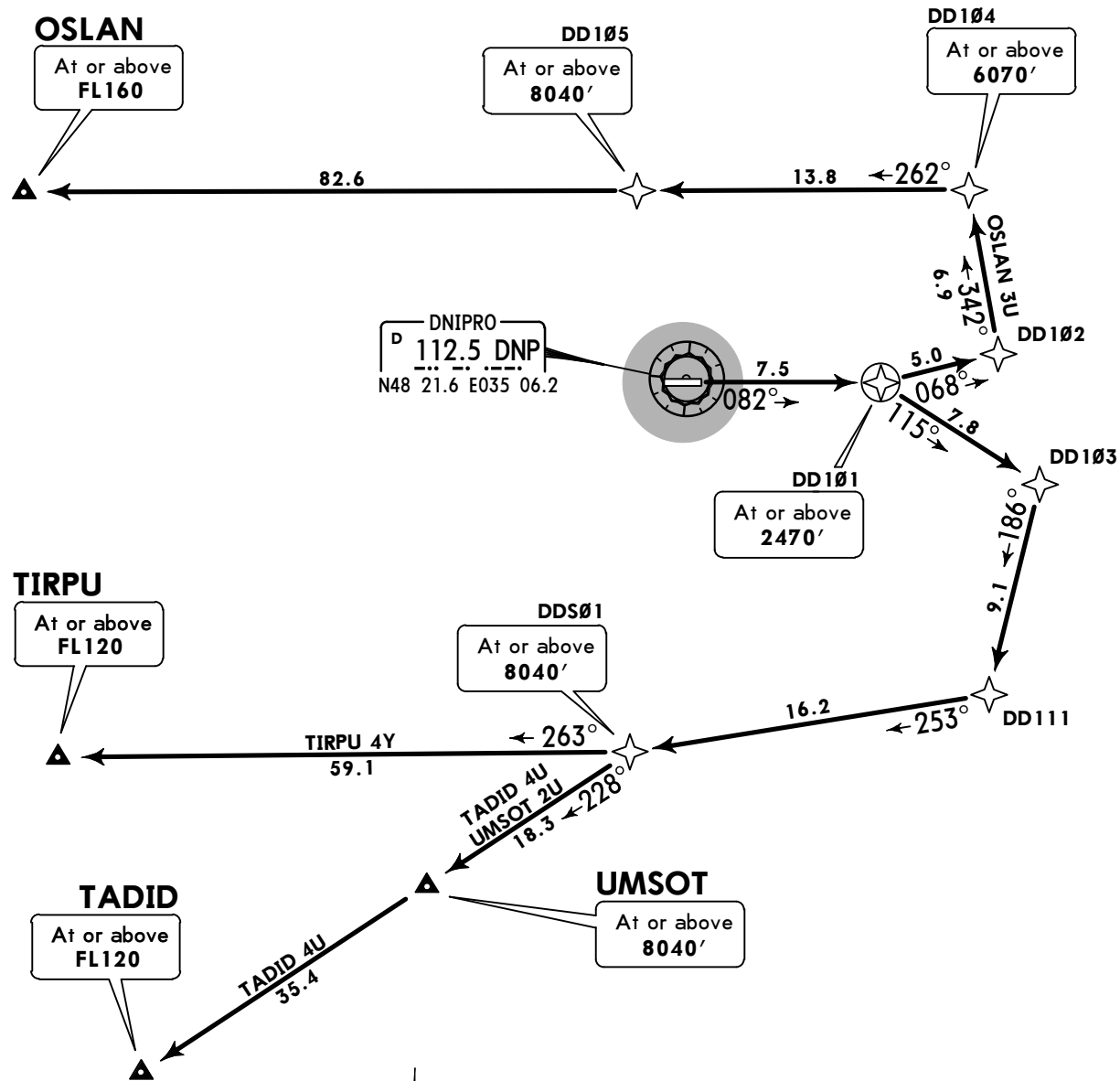
DNIPRO, UKRAINE
RNAV SID

Apt Elev
482'

Trans level: By ATC Trans alt: 10010'
1. RNAV 1 (GNSS).
2. RNAV 1 (P-RNAV) approval required otherwise advise ATC.
3. If unable to comply SID procedures advise ATC.



**OSLAN 3U [OSLA3U]
TADID 4U [TADI4U]
TIRPU 4Y [TIRP4Y]
UMSOT 2U [UMSO2U]
RWY 08 RNAV DEPARTURES**



FT/METER CONVERSION

	QNH
2470'	750m
6070'	1850m
8040'	2450m
10010'	3050m



These SIDs require a minimum climb gradient of 4.5% up to 2470'.

Gnd speed-KT	75	100	150	200	250	300
4.5% V/V (fpm)	342	456	684	911	1139	1367

If unable to comply advise ATC.

SID	ROUTING
OSLAN 3U	DD101 (2470'+) - DD102 - DD104 (6070'+) - DD105 (8040'+) - OSLAN (FL160+).
TADID 4U	DD101 (2470'+) - DD103 - DD111 - DDS01 (8040'+) - UMSOT (8040'+) - TADID (FL120+).
TIRPU 4Y	DD101 (2470'+) - DD103 - DD111 - DDS01 (8040'+) - TIRPU (FL120+).
UMSOT 2U	DD101 (2470'+) - DD103 - DD111 - DDS01 (8040'+) - UMSOT (8040'+).

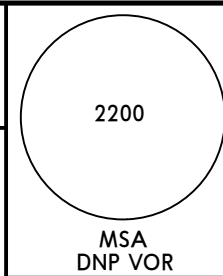
UKDD/DNK
DNIPRO INTL

JEPPESEN
17 MAY 19 **10-3E** Eff 23 May

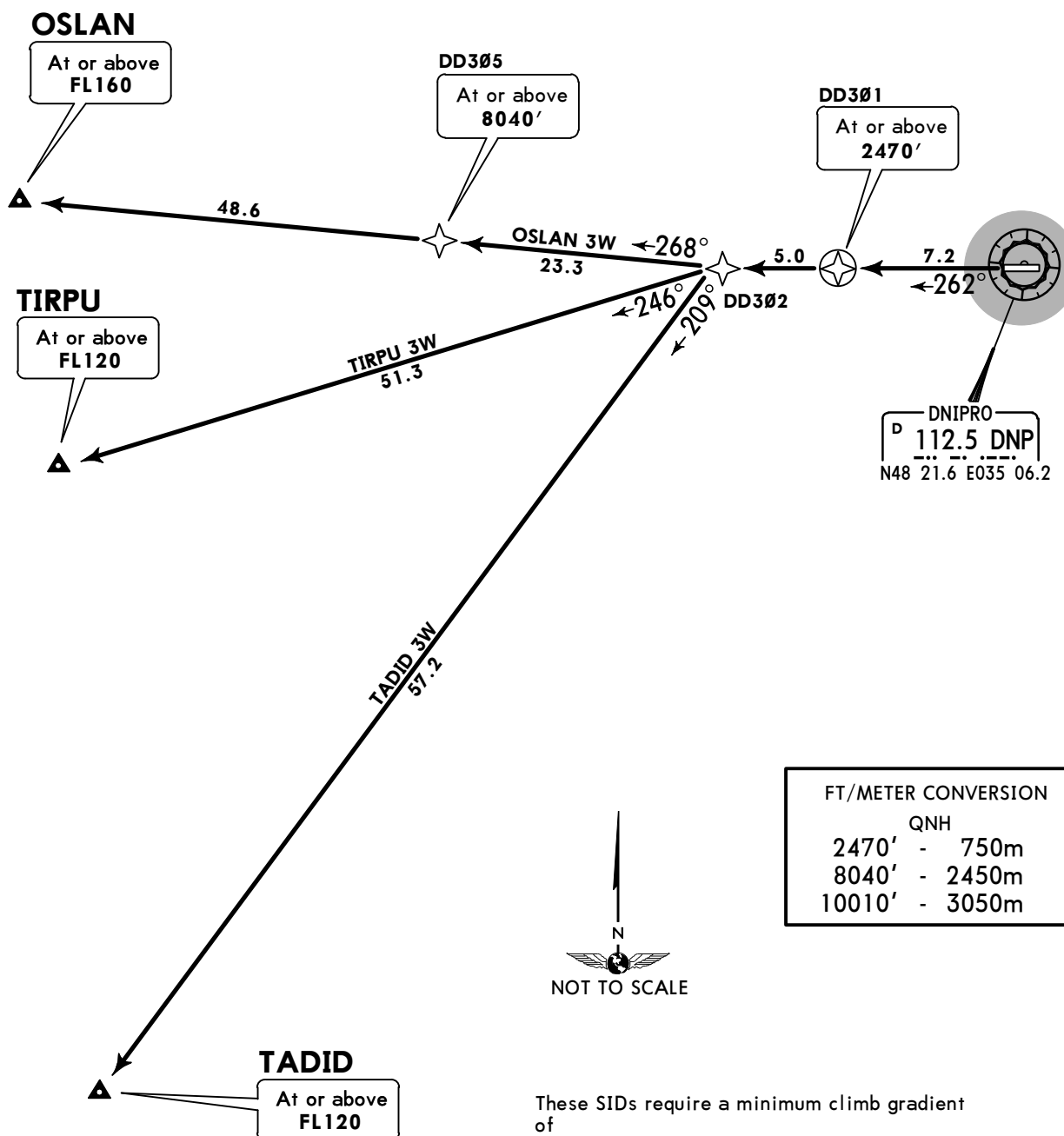
DNIPRO, UKRAINE
RNAV SID

Apt Elev
482'

Trans level: By ATC Trans alt: 10010'
1. RNAV 1 (GNSS).
2. RNAV 1 (P-RNAV) approval required otherwise advise ATC.
3. If unable to comply SID procedures advise ATC.



**OSLAN 3W [OSLA3W]
TADID 3W [TADI3W]
TIRPU 3W [TIRP3W]
RWY 26 RNAV DEPARTURES**



FT/METER CONVERSION

	QNH
2470'	- 750m
8040'	- 2450m
10010'	- 3050m



These SIDs require a minimum climb gradient of 5% up to 2470'.

Gnd speed-KT	75	100	150	200	250	300
5% V/V (fpm)	380	506	760	1013	1266	1519

If unable to comply advise ATC.

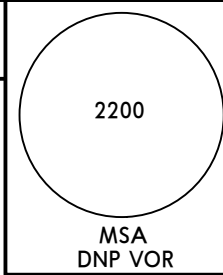
SID	ROUTING
OSLAN 3W	DD301 (2470'+) - DD302 - DD305 (8040'+) - OSLAN (FL160+).
TADID 3W	DD301 (2470'+) - DD302 - TADID (FL120+).
TIRPU 3W	DD301 (2470'+) - DD302 - TIRPU (FL120+).

UKDD/DNK
DNIPRO INTL

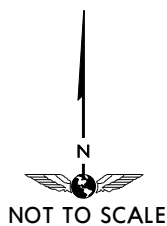
JEPPESEN
 17 MAY 19 **(10-3F)** **Eff 23 May**

DNIPRO, UKRAINE
SID

Apt Elev **482'** Trans level: By ATC Trans alt: 10010'
 If unable to comply SID procedures advise ATC.

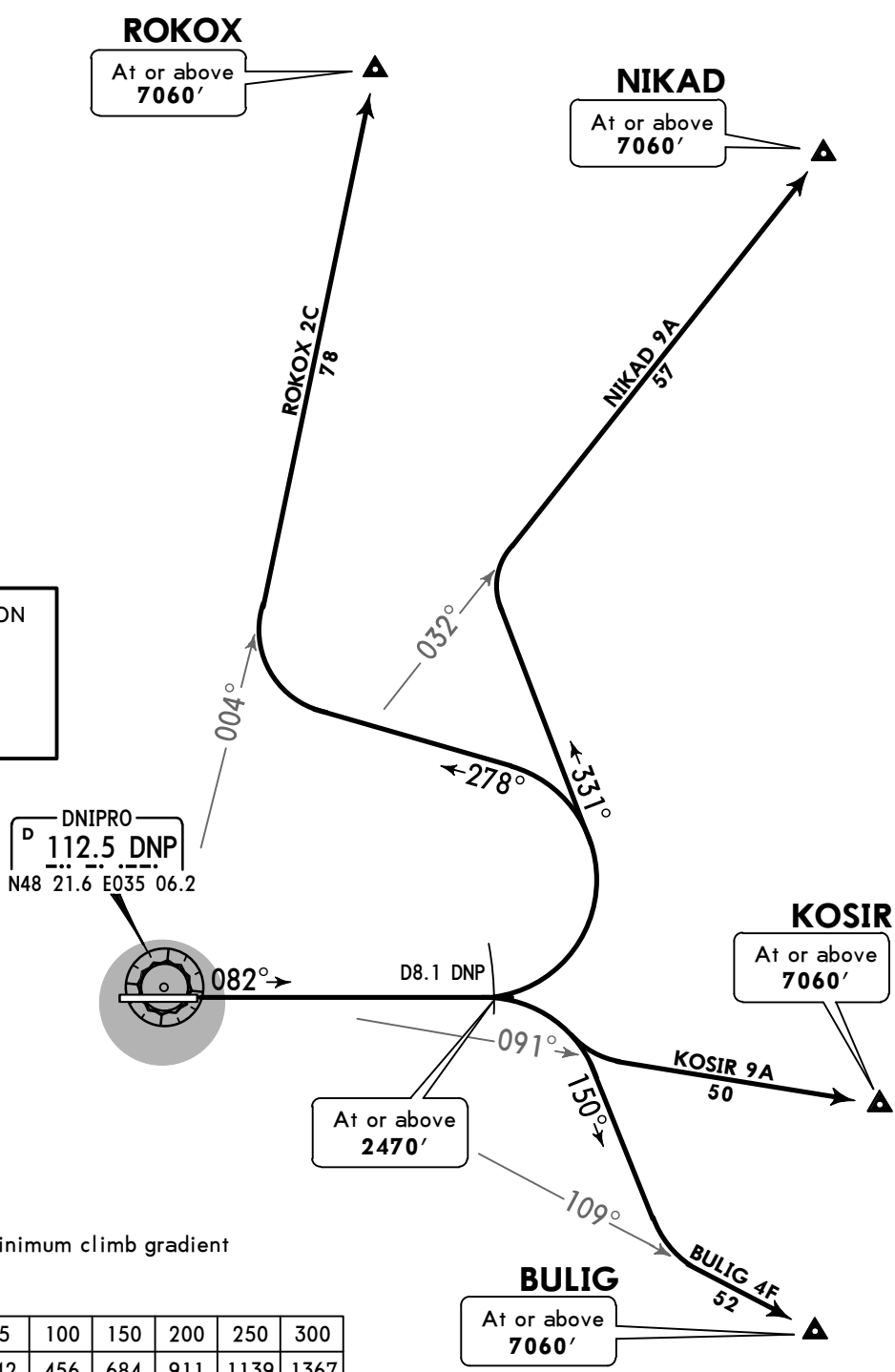


**BULIG 4F [BULI4F], KOSIR 9A [KOSI9A]
 NIKAD 9A [NIKA9A], ROKOX 2C [ROK02C]
 RWY 08 DEPARTURES**



FT/METER CONVERSION

	QNH
2470'	- 750m
7060'	- 2150m
10010'	- 3050m



These SIDs require a minimum climb gradient of 4.5% up to 2470'.

Gnd speed-KT	75	100	150	200	250	300
4.5% V/V (fpm)	342	456	684	911	1139	1367

If unable to comply advise ATC.

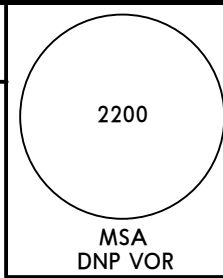
SID	ROUTING
BULIG 4F	On 082° track to D8.1 DNP, turn RIGHT, 150° track, turn LEFT, intercept DNP R-109 to BULIG.
KOSIR 9A BY ATC	On 082° track to D8.1 DNP, turn RIGHT, intercept DNP R-091 to KOSIR.
NIKAD 9A	On 082° track to D8.1 DNP, turn LEFT, 331° track, turn RIGHT, intercept DNP R-032 to NIKAD.
ROKOX 2C	On 082° track to D8.1 DNP, turn LEFT, 278° track, turn RIGHT, intercept DNP R-004 to ROKOX.

UKDD/DNK
DNIPRO INTL

JEPPESEN
17 MAY 19 **(10-3G)** **Eff 23 May**

DNIPRO, UKRAINE
SID

Apt Elev **482'** Trans level: By ATC Trans alt: 10010'
If unable to comply SID procedures advise ATC.



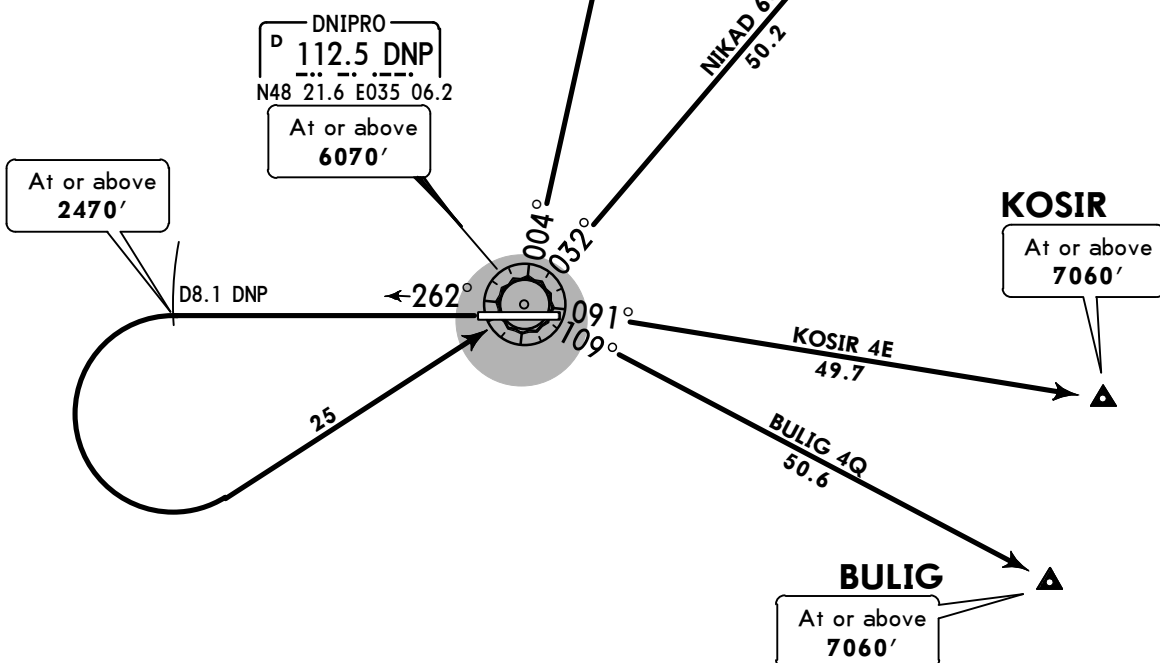
BULIG 4Q [BULI4Q]
KOSIR 4E [KOSI4E]
NIKAD 6C [NIKA6C]
ROKOX 2Q [ROK02Q]
RWY 26 DEPARTURES



FT/METER CONVERSION

QNH

2470'	-	750m
6070'	-	1850m
7060'	-	2150m
10010'	-	3050m



These SIDs require a minimum climb gradient of 5.0% up to 2470'.

Gnd speed-KT	75	100	150	200	250	300
5.0% V/V (fpm)	380	506	760	1013	1266	1519

If unable to comply advise ATC.

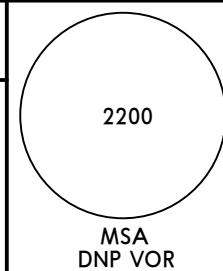
SID	ROUTING
BULIG 4Q	On 262° track to D8.1 DNP, turn LEFT to DNP VOR, turn RIGHT, DNP R-109 to BULIG.
KOSIR 4E BY ATC	On 262° track to D8.1 DNP, turn LEFT to DNP VOR, turn RIGHT, DNP R-091 to KOSIR.
NIKAD 6C	On 262° track to D8.1 DNP, turn LEFT to DNP VOR, turn LEFT, DNP R-032 to NIKAD.
ROKOX 2Q	On 262° track to D8.1 DNP, turn LEFT to DNP VOR, turn LEFT, DNP R-004 to ROKOX.

UKDD/DNK
DNIPRO INTL

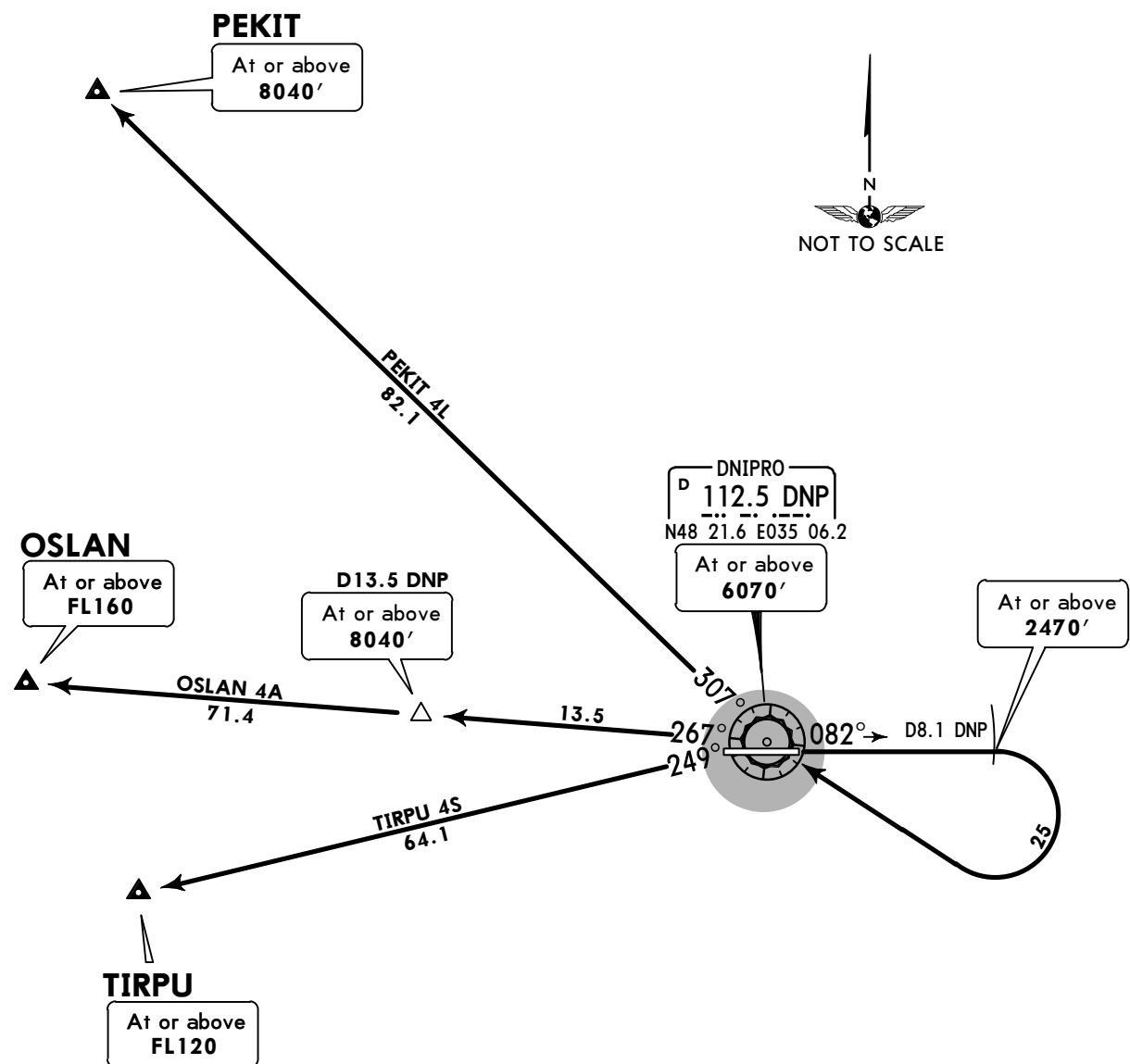
JEPPESEN
 17 MAY 19 **(10-3H)** **Eff 23 May**

DNIPRO, UKRAINE
SID

Apt Elev **482'** Trans level: By ATC Trans alt: 10010'
 If unable to comply SID procedures advise ATC.



OSLAN 4A [OSLA4A]
PEKIT 4L [PEKI4L]
TIRPU 4S [TIRP4S]
RWY 08 DEPARTURES



These SIDs require a minimum climb gradient of 4.5% up to 2470'.

Gnd speed-KT	75	100	150	200	250	300
4.5% V/V (fpm)	342	456	684	911	1139	1367

If unable to comply advise ATC.

FT/METER CONVERSION	
	QNH
2470'	- 750m
6070'	- 1850m
8040'	- 2450m
10010'	- 3050m

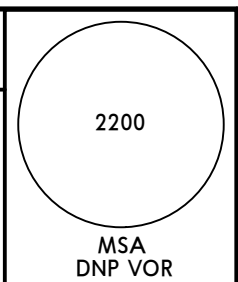
SID	ROUTING
OSLAN 4A	On 082° track to D8.1 DNP, turn RIGHT to DNP VOR, turn LEFT, DNP R-267 to OSLAN.
PEKIT 4L	On 082° track to D8.1 DNP, turn RIGHT to DNP VOR, turn RIGHT, DNP R-307 to PEKIT.
TIRPU 4S	On 082° track to D8.1 DNP, turn RIGHT to DNP VOR, turn LEFT, DNP R-249 to TIRPU.

UKDD/DNK
DNIPRO INTL

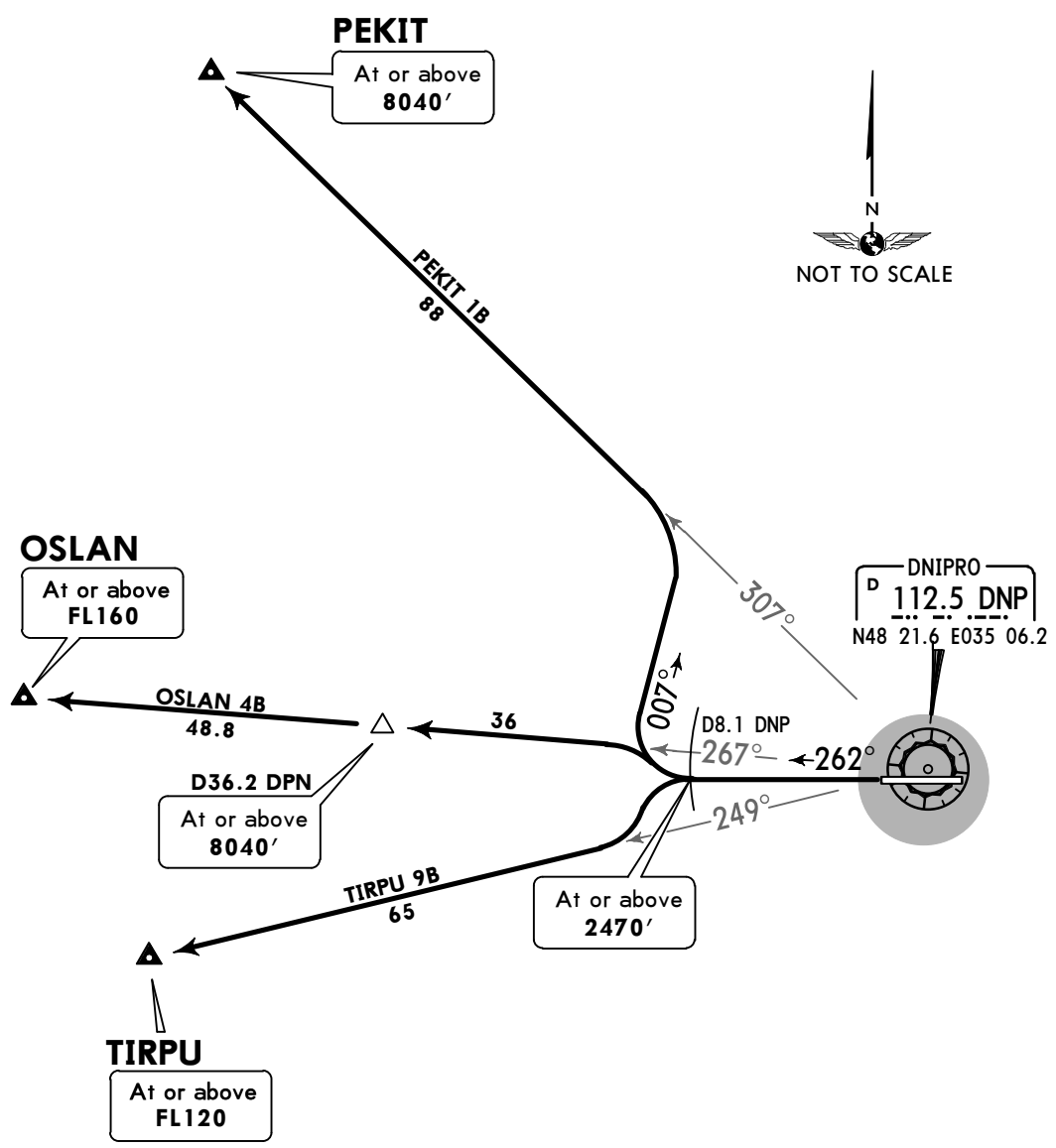
JEPPESEN
 17 MAY 19 **(10-3J)** **Eff 23 May**

DNIPRO, UKRAINE
SID

Apt Elev **482'** Trans level: By ATC Trans alt: 10010'
 If unable to comply SID procedures advise ATC.



OSLAN 4B [OSLA4B]
PEKIT 1B [PEKI1B]
TIRPU 9B [TIRP9B]
RWY 26 DEPARTURES



FT/METER CONVERSION

QNH	
2470'	- 750m
8040'	- 2450m
10010'	- 3050m

These SIDs require a minimum climb gradient of 5.0% up to 2470'.

Gnd speed-KT	75	100	150	200	250	300
5.0% V/V (fpm)	380	506	760	1013	1266	1519

If unable to comply advise ATC.

SID	ROUTING
OSKAN 4B	On 262° track to D8.1 DNP, turn RIGHT, intercept DNP R-267 to OSKAN.
PEKIT 1B	On 262° track to D8.1 DNP, turn RIGHT, 007° track, turn LEFT, intercept DNP R-307 to PEKIT.
TIRPU 9B	On 262° track to D8.1 DNP, turn LEFT, intercept DNP R-249 to TIRPU.

UKDD/DNK
DNIPRO INTL

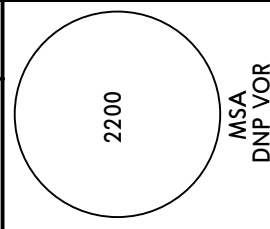
JEPESEN
 17 MAY 19 **(10-3K)** **Eff 23 May**

DNIPRO, UKRAINE

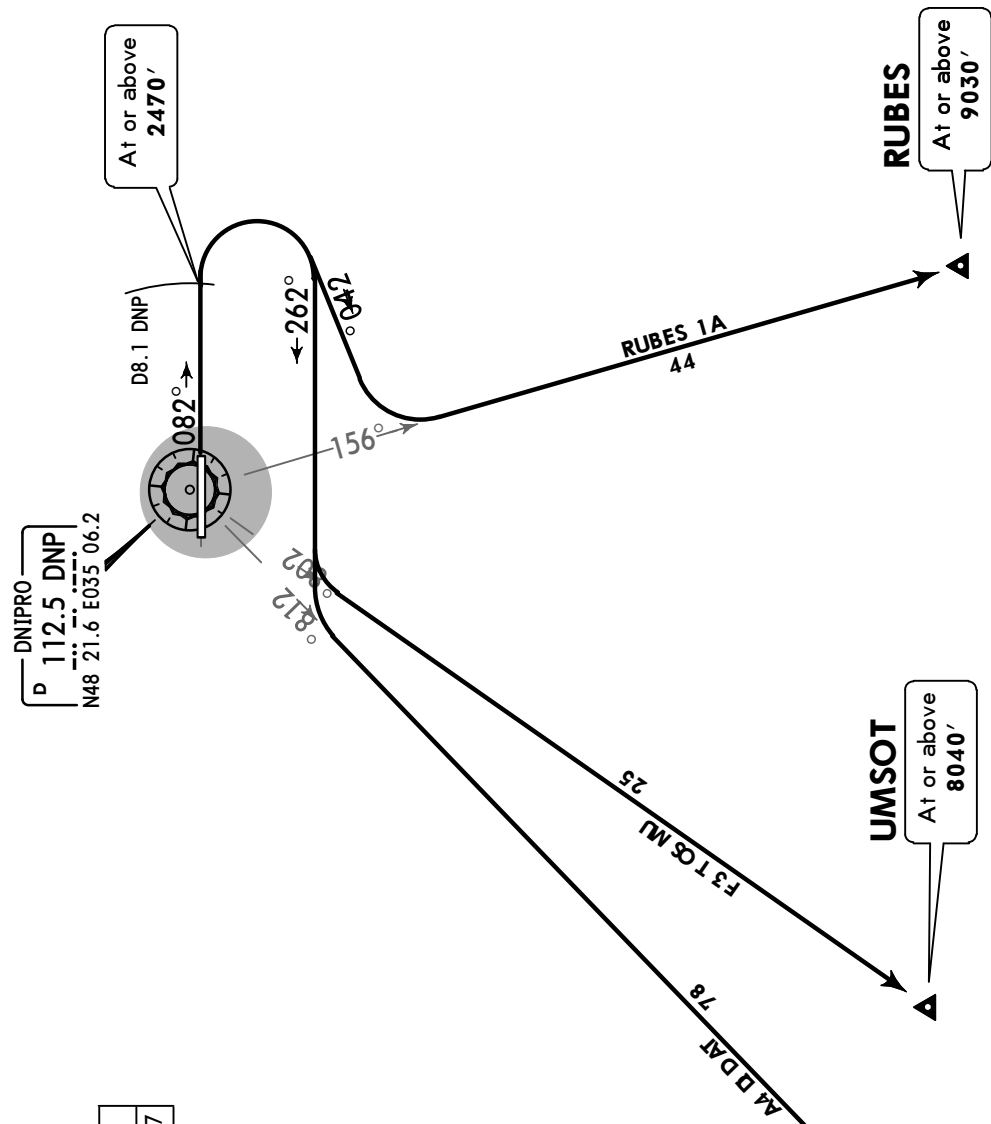
SID

Apt Elev
482'

Trans level: By ATC Trans alt: 10010'
 If unable to comply SID procedures advise ATC.



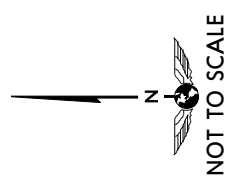
RUBES 1A [RUBE1A]
TADID 4A [TADI4A]
UMSOT 3F [UMSO3F]
RWY 08 DEPARTURES



These SIDs require a minimum climb gradient of 4.5% up to 2470'.

Gnd speed-KT	75	100	150	200	250	300
4.5% V/V (fpm)	342	456	684	911	1139	1367

If unable to comply advise ATC.



FT/METER CONVERSION

QNH	
2470' -	750m
8040' -	2450m
9030' -	2750m
10010' -	3050m

SID	ROUTING
RUBES 1A	On 082° track to D8.1 DNP, turn RIGHT, 240° track, turn LEFT, intercept DNP R-156 to RUBES.
TADID 4A	On 082° track to D8.1 DNP, turn RIGHT, 262° track, turn LEFT, intercept DNP R-218 to TADID.
UMSOT 3F	On 082° track to D8.1 DNP, turn RIGHT, 262° track, turn LEFT, intercept DNP R-208 to UMSOT.

UKDD/DNK
DNIPRO INTL

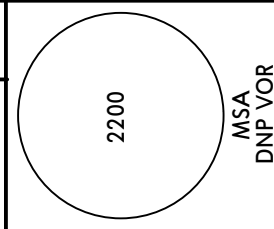
JEPPESEN
 17 MAY 19 **10-3L** **Eff 23 May**

DNIPRO, UKRAINE

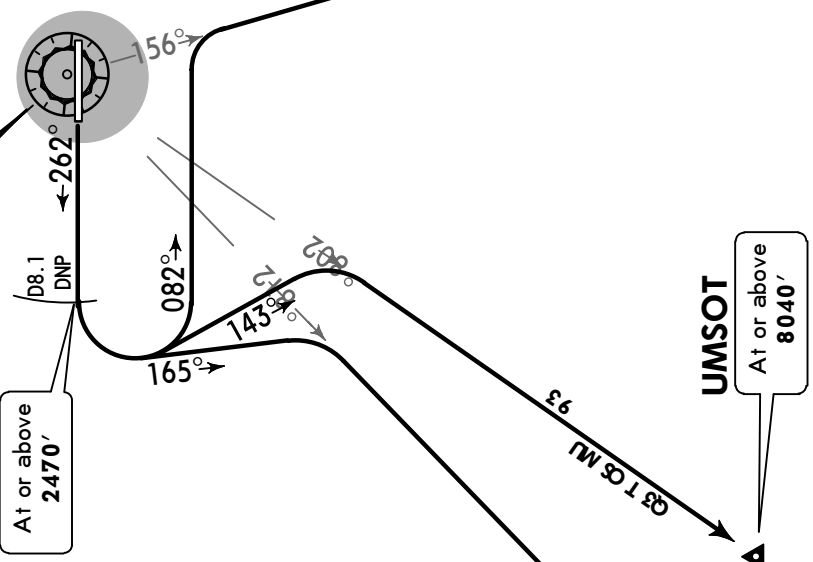
SID

Apt Elev
482'

Trans level: By ATC Trans alt: 10010'
 If unable to comply SID procedures advise ATC.



RUBES 1B [RUBE1B]
TADID 5B [TADI5B]
UMSOT 3Q [UMSO3Q]
RWY 26 DEPARTURES



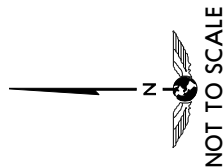
These SIDs require a minimum climb gradient of 5.0% up to 2470'.

Gnd speed-KT	75	100	150	200	250	300
5.0% V/V (fpm)	380	506	760	1013	1266	1519

If unable to comply advise ATC.

FT/METER CONVERSION

QNH	
2470'	- 750m
8040'	- 2450m
9030'	- 2750m
10010'	- 3050m



ROUTING

SID	ROUTING
RUBES 1B	On 262° track to D8.1 DNP, turn LEFT, 082° track, turn RIGHT, intercept DNP R-156 to RUBES.
TADID 5B	On 262° track to D8.1 DNP, turn LEFT, 165° track, turn RIGHT, intercept DNP R-218 to TADID.
UMSOT 3Q	On 262° track to D8.1 DNP, turn LEFT, 143° track, turn RIGHT, intercept DNP R-208 to UMSOT.

UKDD/DNK

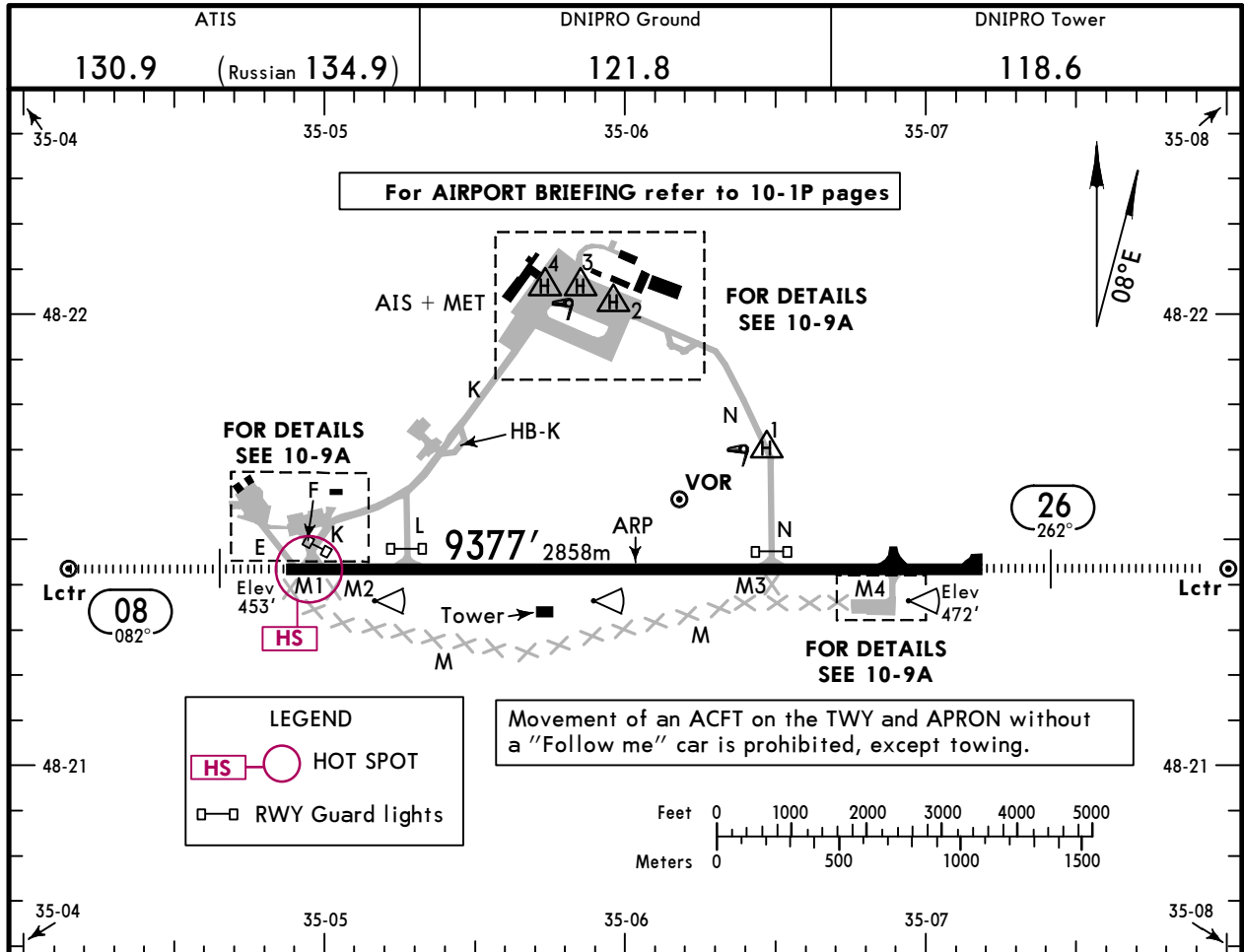
Apt Elev **482'**
N48 21.4 E035 06.0



8 MAY 20 **10-9** Eff 21 May

DNIPRO, UKRAINE

DNIPRO



ADDITIONAL RUNWAY INFORMATION

RWY	HIRL (60m) HIALS PAPI-L (angle 2.80°) RVR	USABLE LENGTHS		TAKE-OFF	WIDTH
		Threshold	Glide Slope		
08	HIRL (60m) HIALS PAPI-L (angle 2.80°) RVR		8283' 2525m	①	144'
26	HIRL (60m) HIALS PAPI-L (angle 3.00°) RVR		8526' 2599m		44m

① TAKE-OFF RUN AVAILABLE

RWY 08:
 From rwy head 9377' (2858m)
 twy K int 9065' (2763m)
 twy L int 7785' (2373m)

RWY 26:
 From rwy head 9377' (2858m)
 twy M4 int 8212' (2503m)
 twy N int 6568' (2002m)

HOT SPOT

(For information only, not to be construed as ATC instructions.)

HS Taxi carefully, traffic congestion.

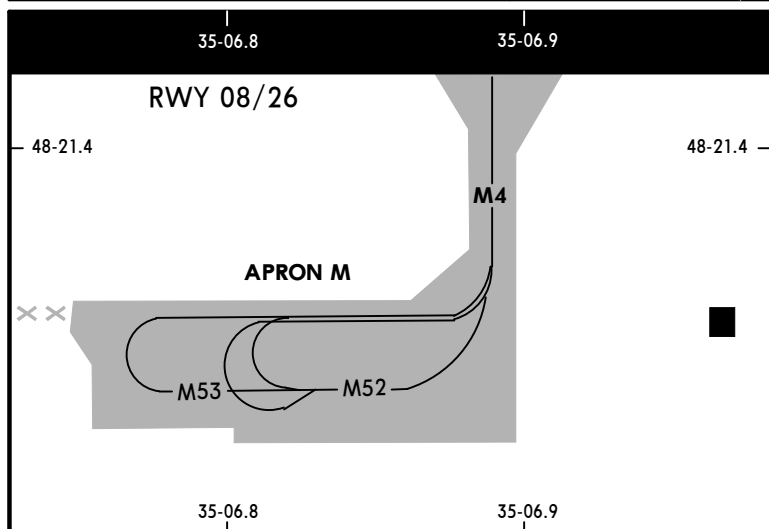
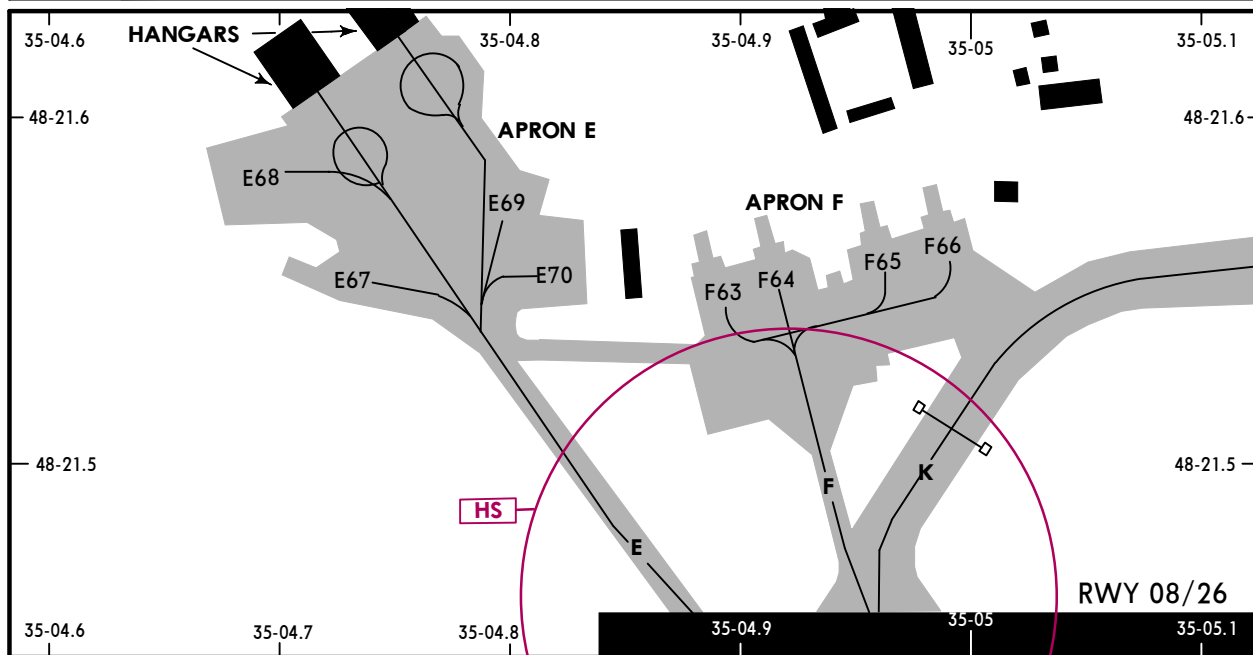
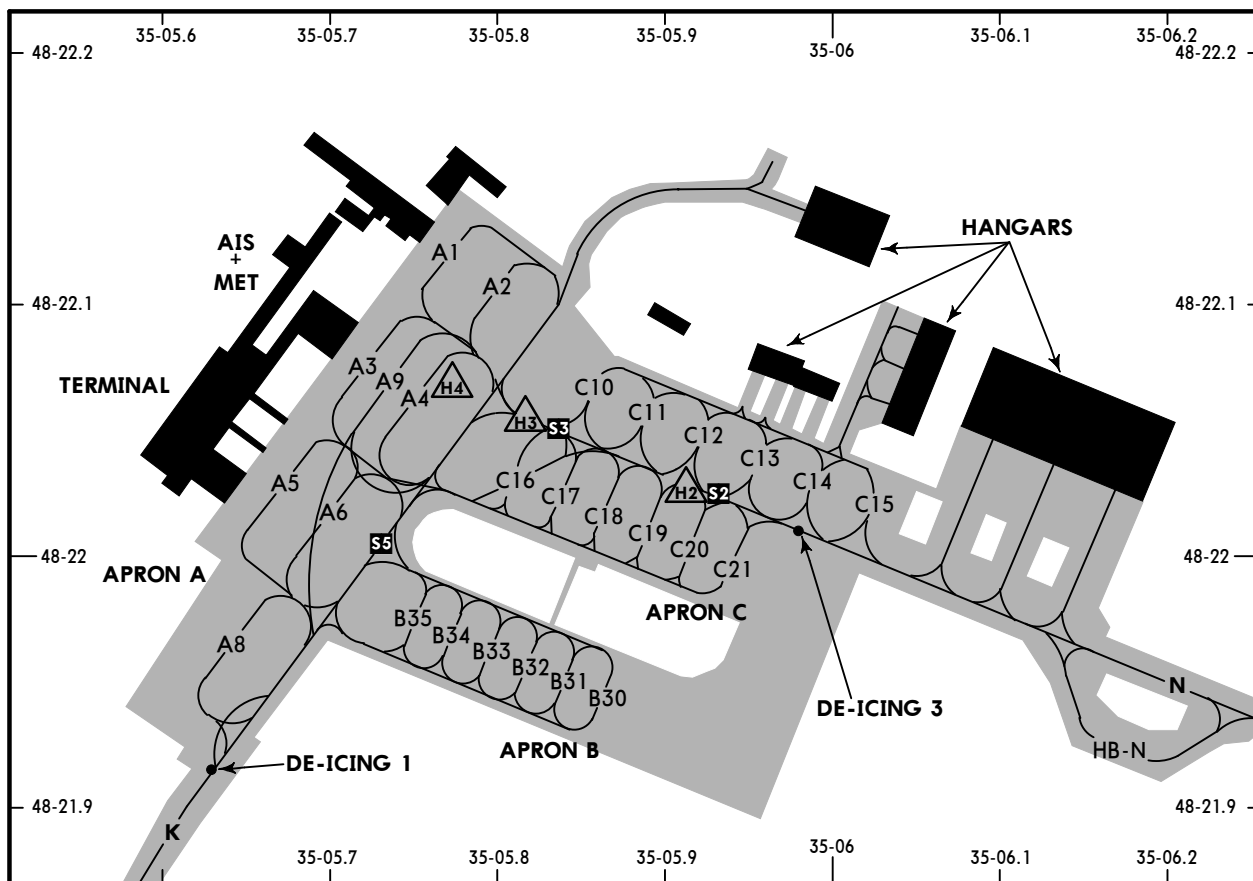
JAR-OPS			TAKE-OFF		
LVP must be in force			All Rwys		
RCLM (DAY only) or RL		RCLM (DAY only) or RL		NIL (DAY only)	
A					
B					
C	400m	400m	400m	500m	500m
D					

UKDD/DNK

JEPPESSEN
8 MAY 20 **10-9A** Eff 21 May

DNIPRO, UKRAINE

DNIPRO



LEGEND

- E** Taxiway
- A1** Parking stand
- S1** Start-up point
- RWY Guard lights
- HS** HOT SPOT:
See 10-9 for description.

Movement of an ACFT on the TWY and APRON without a "Follow me" car is prohibited, except towing.

UKDD/DNK



DNIPRO, UKRAINE
DNIPRO INTL

INS COORDINATES			
STAND No.	COORDINATES	CABIN on	
APRON A			
A1, A 2	N48 22.1 E035 05.8	N or S	
A3	N48 22.1 E035 05.7	N or S	
A4	N48 22.0 E035 05.7	S	
A4	N48 22.1 E035 05.8	N	
A5, A6	N48 22.0 E035 05.7	N or S	
A8	N48 22.0 E035 05.6	S	
A8	N48 22.0 E035 05.7	N	
A9	N48 22.1 E035 05.7	S	
A9	N48 22.1 E035 05.8	N	
APRON B			
B30	N48 21.9 E035 05.9	S	
B30	N48 21.9 E035 05.9	N	
B31, B32	N48 21.9 E035 05.8	S	
B31, B32	N48 22.0 E035 05.8	N	
B33, B34	N48 22.0 E035 05.8	N or S	
B35	N48 22.0 E035 05.7	S	
B35	N48 22.0 E035 05.8	N	
APRON C			
C10	N48 22.1 E035 05.9	N or S	
C11, C12	N48 22.0 E035 05.9	S	
C11, C12	N48 22.1 E035 05.9	N	
C13 thru C15	N48 22.0 E035 06.0	N or S	
C16 thru C17	N48 22.0 E035 05.8	N or S	
C18 thru C21	N48 22.0 E035 05.9	N or S	
APRON E			
E67	N48 21.6 E035 04.7	E or W	
E68	N48 21.6 E035 04.7	E	
E69	N48 21.6 E035 04.8	N or S	
E70	N48 21.6 E035 04.8	W	
APRON F			
F63, F64	N48 21.6 E035 04.9	N	
F63, F64	N48 21.5 E035 04.9	S	
F65, F66	N48 21.6 E035 05.0	N or S	
APRON M			
M52	N48 21.3 E035 06.8	W	
M52	N48 21.3 E035 06.9	E	
M53	N48 21.3 E035 06.8	W	
HELIPAD			
H1	N48 21.7 E035 06.5		
H2	N48 22.0 E035 05.9		
H3, H4	N48 22.1 E035 05.8		

UKDD/DNK

JEPPesen
10 APR 20 **10-9S** Eff 23 Apr

Standard
DNIPRO, UKRAINE
DNIPRO

STRAIGHT-IN RWY	A	B	C	D
08 ILS FULL ALS out	653' (200') R550m ① R1200m	653' (200') R550m ① R1200m	653' (200') R550m ① R1200m	653' (200') R550m ① R1200m
LOC ② ALS out	770' (317') R750m R1400m	770' (317') R750m R1400m	770' (317') R750m R1400m	770' (317') R750m R1400m
VOR ② ALS out	840' (387') R1100m R1500m	840' (387') R1100m R1500m	840' (387') R1100m R1800m	840' (387') R1100m R1800m
NDB ② with DME ALS out	850' (397') R1100m R1500m	850' (397') R1100m R1500m	850' (397') R1100m R1800m	850' (397') R1100m R1800m
NDB ② w/o DME ALS out	900' (447') R1400m R1500m	900' (447') R1400m R1500m	900' (447') R1400m R2100m	900' (447') R1400m R2100m
NDB w/o DME ALS out	900' (447') R1600m R2300m	900' (447') R1600m R2300m	900' (447') R1800m R2500m	900' (447') R1800m R2500m
26 ILS FULL ALS out	672' (200') R550m ① R1200m	672' (200') R550m ① R1200m	672' (200') R550m ① R1200m	672' (200') R550m ① R1200m
LOC ② with D2.7 DNP ALS out	770' (298') R750m R1400m	770' (298') R750m R1400m	770' (298') R750m R1400m	770' (298') R750m R1400m
LOC ② w/o D2.7 DNP ALS out	860' (388') R1100m R1500m	860' (388') R1100m R1500m	860' (388') R1100m R1800m	860' (388') R1100m R1800m
VOR ② ALS out	860' (388') R1100m R1500m	860' (388') R1100m R1500m	860' (388') R1100m R1800m	860' (388') R1100m R1800m
NDB ② with DME ALS out	860' (388') R1100m R1500m	860' (388') R1100m R1500m	860' (388') R1100m R1800m	860' (388') R1100m R1800m
NDB ② w/o DME ALS out	910' (438') R1300m R1500m	910' (438') R1300m R1500m	910' (438') R1300m R2000m	910' (438') R1300m R2000m
NDB w/o DME ALS out	910' (438') R1500m R2200m	910' (438') R1500m R2200m	910' (438') R1700m R2400m	910' (438') R1700m R2400m

① RVR 750m when a Flight Director or Autopilot or HUD to DA is not used.

② Continuous Descent Final Approach.

CIRCLE-TO-LAND ③	100 KT	135 KT	180 KT	205 KT
	890' (408') V1500m ④	990' (508') V1600m ④	1200' (718') V2400m ④	1500' (1018') V3600m

③ Not authorized North of airport between R-280 and R-045 DNP.

④ or higher minimums of preceding straight-in approach.

UKDD/DNK

 **JEPPESEN**
 10 APR 20 **(10-9S)** Eff 23 Apr

Standard
DNIPRO, UKRAINE
 DNIPRO

TAKE-OFF RWY 08, 26

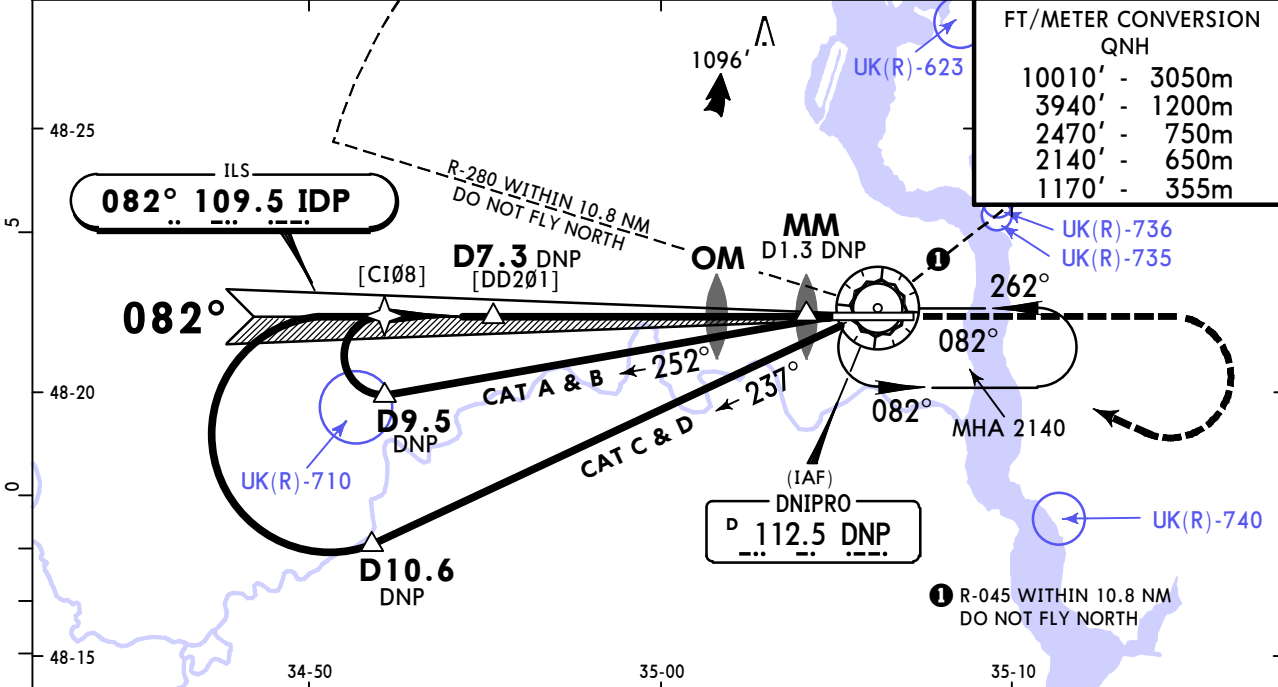
	Low Visibility Take-off		
	Day: RL & RCLM Night: RL	Day: RL or RCLM Night: RL	Adequate vis ref (Day only)
A			
B	R400m	400m	500m
C			
D			

UKDD/DNK DNIPRO

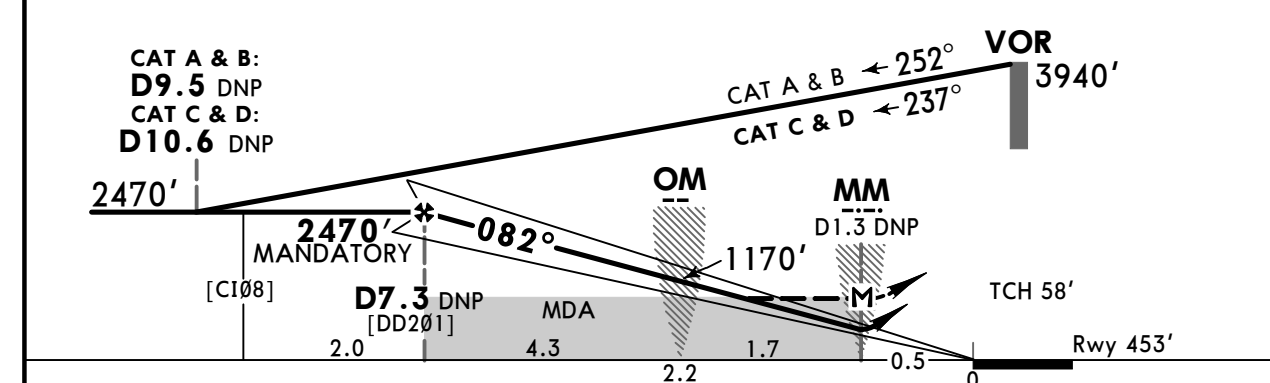
JEPPesen
10 APR 20 **(11-1)** Eff 23 Apr

DNIPRO, UKRAINE ILS or LOC Rwy 08

ATIS 130.9 (Russian 134.9)		DNIPRO Radar (APP) 119.4	DNIPRO Tower 118.6	DNIPRO Ground 121.8
LOC IDP 109.5	Final Apch Crs 082°	D7.3 MANDATORY 2470' (2017')	ILS DA(H) 653' (200')	Apt Elev 482' Rwy 453'
MISSED APCH: Climb on 082° to 2470', then turn RIGHT to VOR climbing to 3940', then according to chart.				2200 MSA DNP VOR
Alt Set: hPa (MM on req)		Rwy Elev: 17 hPa	Trans level: By ATC	Trans alt: 10010'
DME required.				



LOC (GS out)	DNP DME	6.5	5.4	4.3	3.2	2.2
	ALTITUDE	2180'	1860'	1535'	1220'	900'



Gnd speed-Kts	70	90	100	120	140	160	HIALS PAPI 2470' on 082°
ILS GS or LOC Descent Angle	2.80°	347	446	495	594	693	
MAP at MM/D1.3 DNP							
D7.3 DNP to MAP	6.0	5:09	4:00	3:36	3:00	2:34	

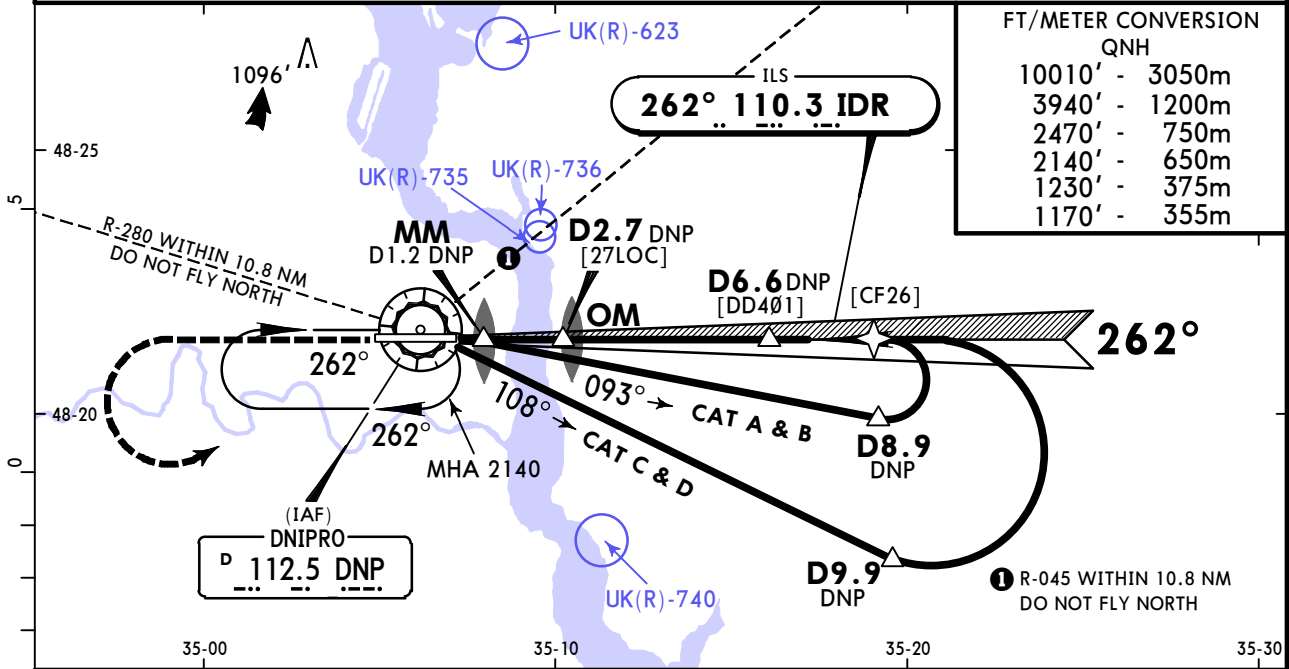
JAR-OPS				STRAIGHT-IN LANDING RWY 08		CIRCLE-TO-LAND	
ILS		LOC (GS out)		Not authorized North of airport between R-280 and R-045		Max Kts MDA(H) VIS	
DA(H) 653' (200')		MDA(H) 770' (317')					
FULL		ALS out		FULL		ALS out	
A				RVR 900m	RVR 1500m	100	890'(408') 1500m
B				RVR 1000m	RVR 1800m	135	990'(508') 1600m
C	RVR 550m	RVR 1000m		RVR 1000m	RVR 1800m	180	1200'(718') 2400m
D				RVR 1400m	RVR 2000m	205	1500'(1018') 3600m

UKDD/DNK DNIPRO

JEPPESSEN
10 APR 20 **11-2** Eff 23 Apr

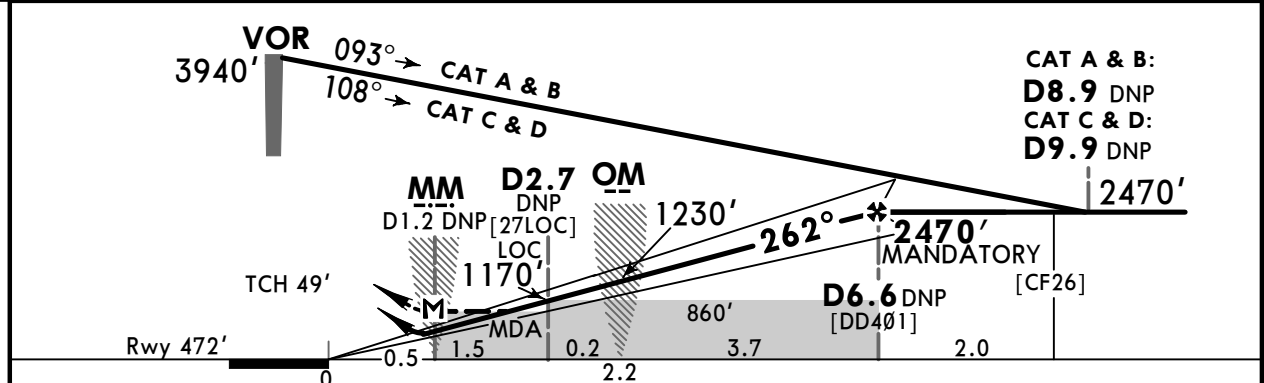
DNIPRO, UKRAINE ILS or LOC Rwy 26

ATIS 130.9 (Russian 134.9)		DNIPRO Radar (APP) 119.4		DNIPRO Tower 118.6		DNIPRO Ground 121.8	
LOC IDR 110.3	Final Apch Crs 262°	D6.6 MANDATORY 2470' (1998')	ILS DA(H) 672' (200')	Apt Elev 482' Rwy 472'			
MISSED APCH: Climb on 262° to 2470', then turn LEFT to VOR climbing to 3940', then according to chart.							
DME required.		Alt Set: hPa (MM on req)	Rwy Elev: 17 hPa	Trans level: By ATC	Trans alt: 10010'		
Ground proximity warning system short term alerting is possible on final apch between 990' AMSL and 660' AMSL due to terrain.							



10010'	3050m
3940'	1200m
2470'	750m
2140'	650m
1230'	375m
1170'	355m

LOC (GS out)	DNP DME ALTITUDE	2.2	3.2	4.3	5.4	6.5
		1030'	1400'	1770'	2130'	2500'



Gnd speed-Kts	70	90	100	120	140	160	
ILS GS	3.00°	372	478	531	637	743	
LOC Descent Angle	3.10°	384	494	548	658	768	
MAP at MM/D1.2 DNP							
D6.6 DNP to MAP	5.4	4:38	3:36	3:14	2:42	2:19	2:02

JAR-OPS STRAIGHT-IN LANDING RWY 26						CIRCLE-TO-LAND	
ILS		LOC (GS out)				Not authorized North of airport between R-280 and R-045	
DA(H) 672' (200')		with D2.7 DNP MDA(H) 770' (298')		w/o D2.7 DNP MDA(H) 860' (388')			
FULL	ALS out	ALS out		ALS out		Max Kts	MDA(H) VIS
A				RVR 900m	RVR 1500m	100	890' (408') 1500m
B			RVR 1500m		RVR 1500m	135	990' (508') 1600m
C	RVR 550m RVR 1000m	RVR 800m	RVR 1600m	RVR 1000m	RVR 1800m	180	1200' (718') 2400m
D		RVR 1200m	RVR 1800m	RVR 1400m	RVR 2000m	205	1500' (1018') 3600m

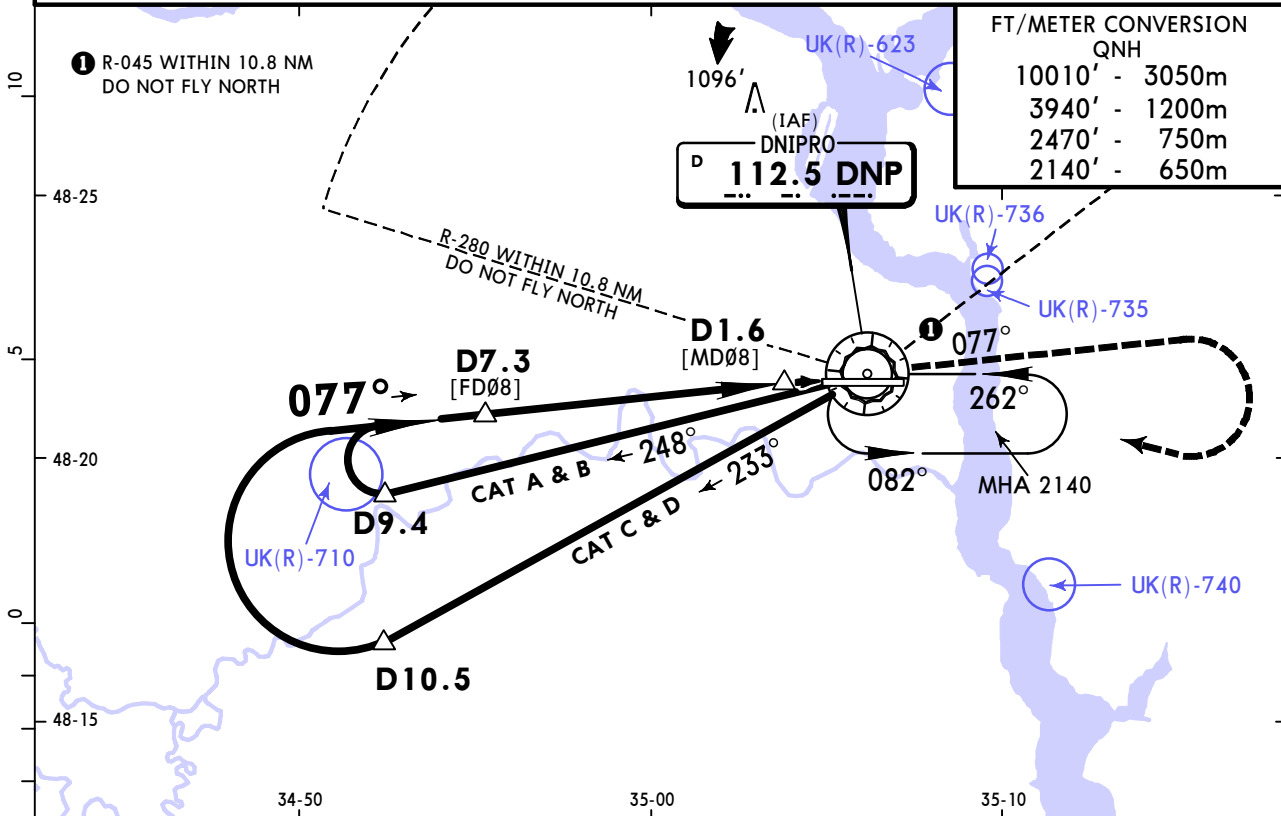
PANS OPS

UKDD/DNK DNIPRO

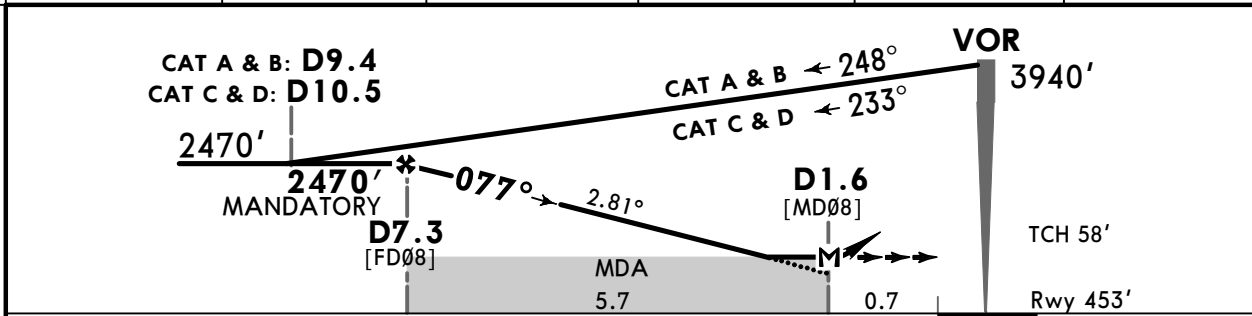
JEPPesen
10 APR 20 **13-1** Eff 23 Apr

DNIPRO, UKRAINE VOR Rwy 08

BRIEFING STRIP™	ATIS	DNIPRO Radar (APP)	DNIPRO Tower	DNIPRO Ground	<div style="border: 1px solid black; border-radius: 50%; width: 100px; height: 100px; margin: 0 auto;"></div> 2200 MSA DNP VOR
	130.9 (Russian 134.9)	119.4	118.6	121.8	
	VOR DNP 112.5	Final Apch Crs 077°	D7.3 MANDATORY 2470' (2017')	MDA(H) 840' (387')	
MISSED APCH: Climb on 077° to 2470', then turn RIGHT to VOR climbing to 3940', then according to chart.					
Alt Set: hPa (MM on req)		Rwy Elev: 17 hPa	Trans level: By ATC	Trans alt: 10010'	
DME required.					



DNP DME	6.5	5.4	4.3	3.2	2.2
ALTITUDE	2170'	1850'	1530'	1210'	890'



Gnd speed-Kts	70	90	100	120	140	160	HIALS PAPI 2470' on 077°
Descent Angle	2.81°	348	447	497	596	696	
MAP at D1.6							
D7.3 to MAP	5.7	4:53	3:48	3:25	2:51	2:27	2:08

JAR-OPS			STRAIGHT-IN LANDING RWY 08		CIRCLE-TO-LAND	
			MDA(H) 840' (387')		Not authorized North of airport between R-280 and R-045	
			ALS out		Max Kts	
A	RVR 900m		RVR 1500m		100	MDA(H) 890' (408') VIS 1500m
B					135	990' (508') 1600m
C	RVR 1000m		RVR 1800m		180	1200' (718') 2400m
D	RVR 1400m		RVR 2000m		205	1500' (1018') 3600m

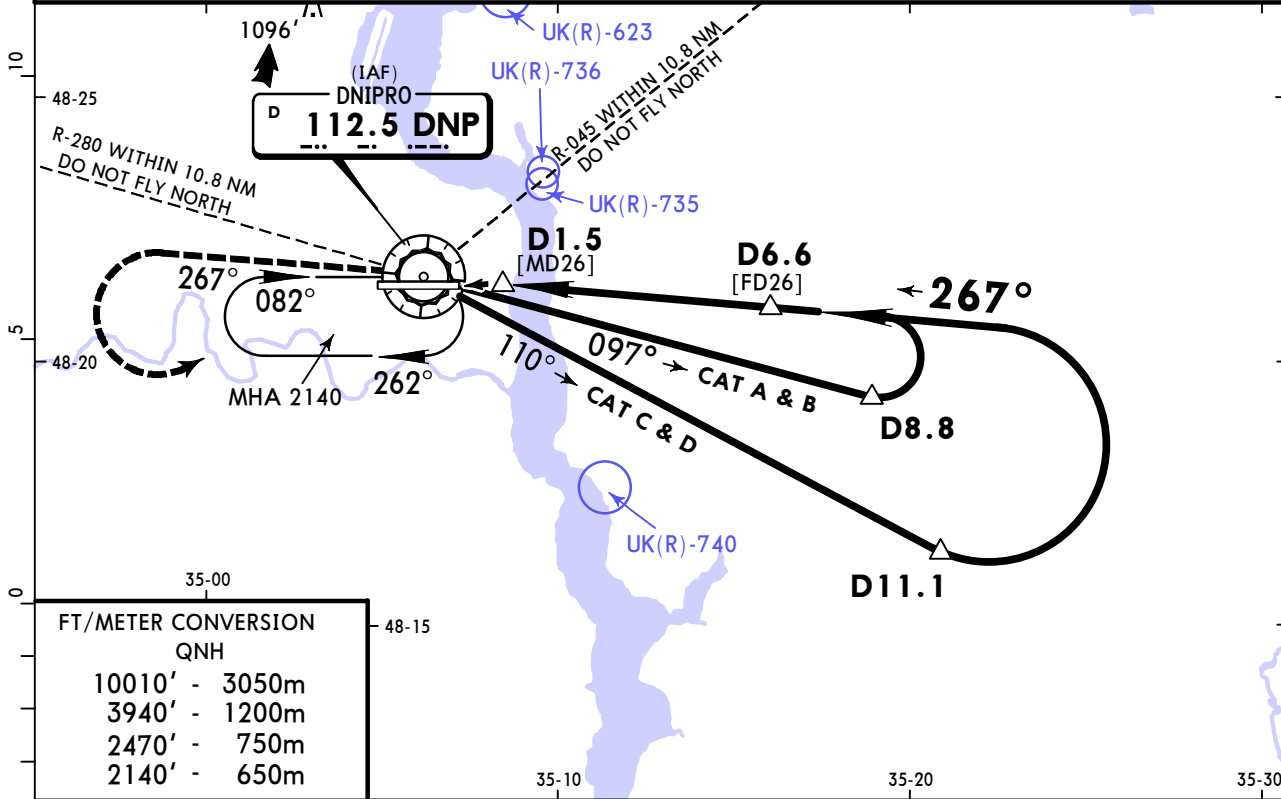
PANS OPS

UKDD/DNK
DNIPRO

JEPPESSEN
10 APR 20 **(13-2)** Eff 23 Apr

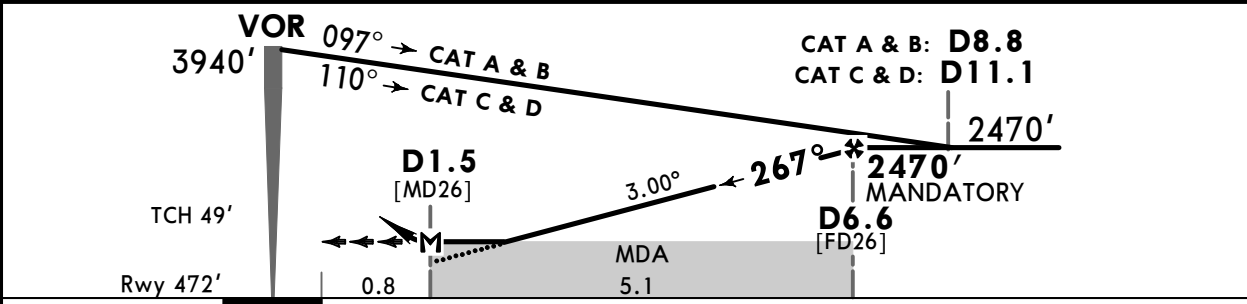
DNIPRO, UKRAINE
VOR Rwy 26

BRIEFING STRIP™	ATIS	DNIPRO Radar (APP)	DNIPRO Tower	DNIPRO Ground	2200
	130.9 (Russian 134.9)	119.4	118.6	121.8	
	VOR DNP 112.5	Final Apch Crs 267°	D6.6 MANDATORY 2470' (1998')	MDA(H) 860' (388')	Apt Elev 482' Rwy 472'
MISSED APCH: Climb on 267° to 2470', then turn LEFT to VOR climbing to 3940', then according to chart.					
DME required. Alt Set: hPa (MM on req) Rwy Elev: 17 hPa Trans level: By ATC Trans alt: 10010'					
Ground proximity warning system short term alerting is possible on final apch between 990' AMSL and 660' AMSL due to terrain.					



FT/METER CONVERSION	
QNH	
10010'	3050m
3940'	1200m
2470'	750m
2140'	650m

DNP DME	2.2	3.2	4.3	5.4	6.5
ALTITUDE	1030'	1400'	1760'	2130'	2490'



Gnd speed-Kts	70	90	100	120	140	160	HIALS PAPI	2470' on 267°
Descent Angle 3.00°	372	478	531	637	743	849		
MAP at D1.5								
D6.6 to MAP	5.1	4:22	3:24	3:04	2:33	2:11	1:55	

JAR-OPS STRAIGHT-IN LANDING RWY 26				CIRCLE-TO-LAND			
MDA(H) 860' (388')				Not authorized North of airport between R-280 and R-045			
		ALS out	Max Kts	MDA(H)	VIS		
A	RVR 900m	RVR 1500m	100	890' (408')	1500m		
B			135	990' (508')	1600m		
C	RVR 1000m	RVR 1800m	180	1200' (718')	2400m		
D	RVR 1400m	RVR 2000m	205	1500' (1018')	3600m		

PANS OPS

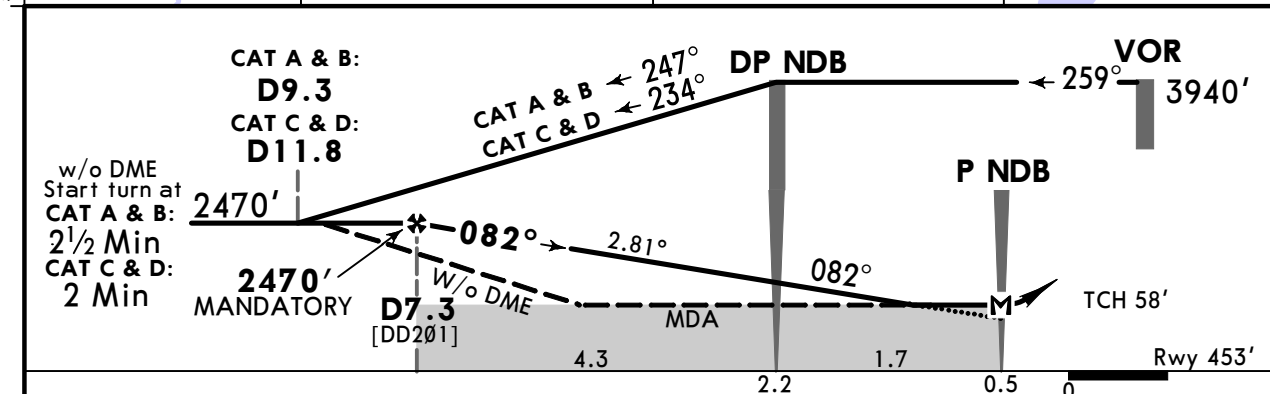
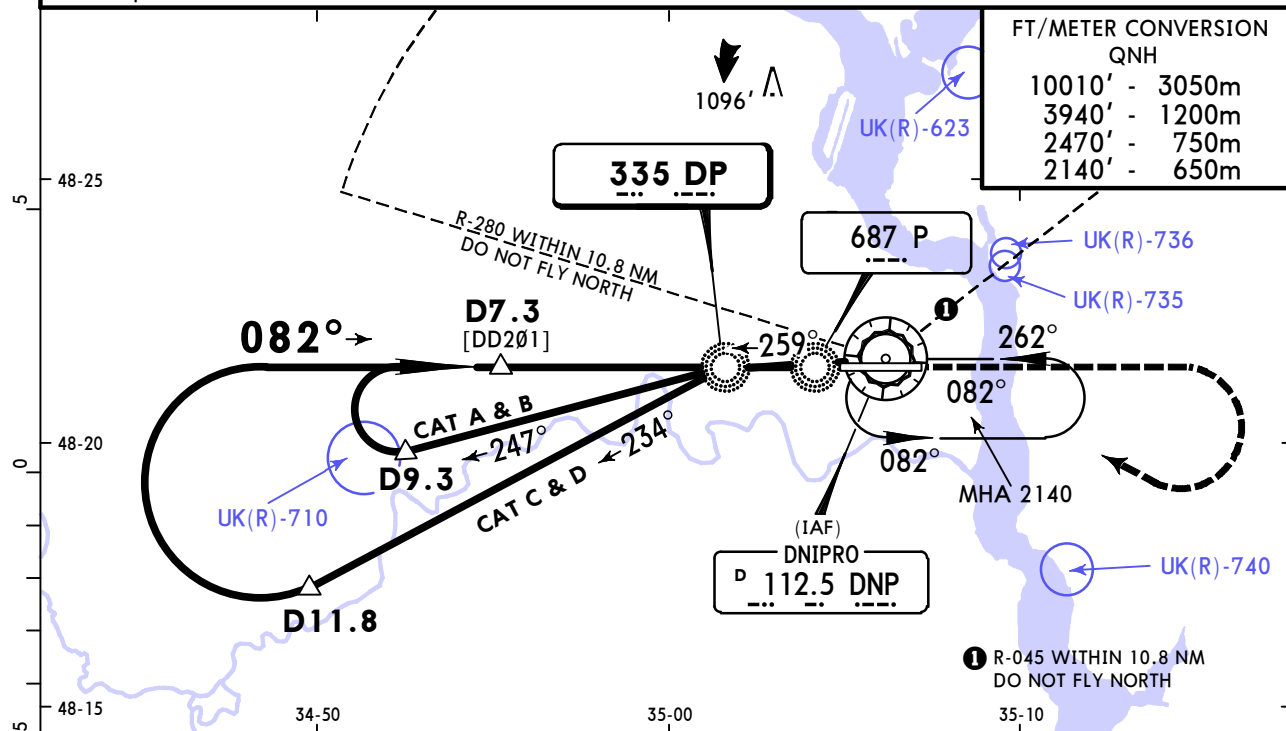
UKDD/DNK DNIPRO

JEPPESSEN
10 APR 20 **(16-1)** Eff 23 Apr

DNIPRO, UKRAINE NDB Rwy 08

ATIS 130.9 (Russian 134.9)		DNIPRO Radar (APP) 119.4	DNIPRO Tower 118.6	DNIPRO Ground 121.8
BRIEFING STRIP™ NDB DP 335	Final Apch Crs 082°	With DME D7.3 MANDATORY 2470' (2017')	With DME MDA(H) 850' (397')	Apt Elev 482' Rwy 453'
		W/o DME No FAF	W/o DME MDA(H) 900' (447')	
MISSED APCH: Climb on 082° to 2470', then turn RIGHT to VOR climbing to 3940', then as directed.				2200 MSA DNP VOR

Alt Set: hPa (MM on req) Rwy Elev: 17 hPa Trans level: By ATC Trans alt: 10010'
DME required for FAF determination.



Gnd speed-Kts	70	90	100	120	140	160	HIALS PAPI 2470' on 082°
Descent Angle 2.81°	348	447	497	596	696	795	
MAP at P NDB							
D7.3 to MAP	6.0	5:09	4:00	3:36	3:00	2:34	2:15

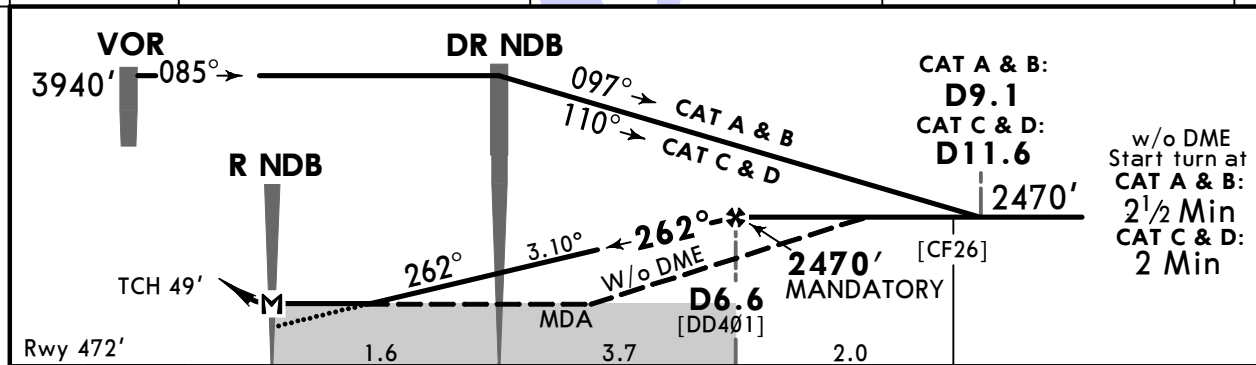
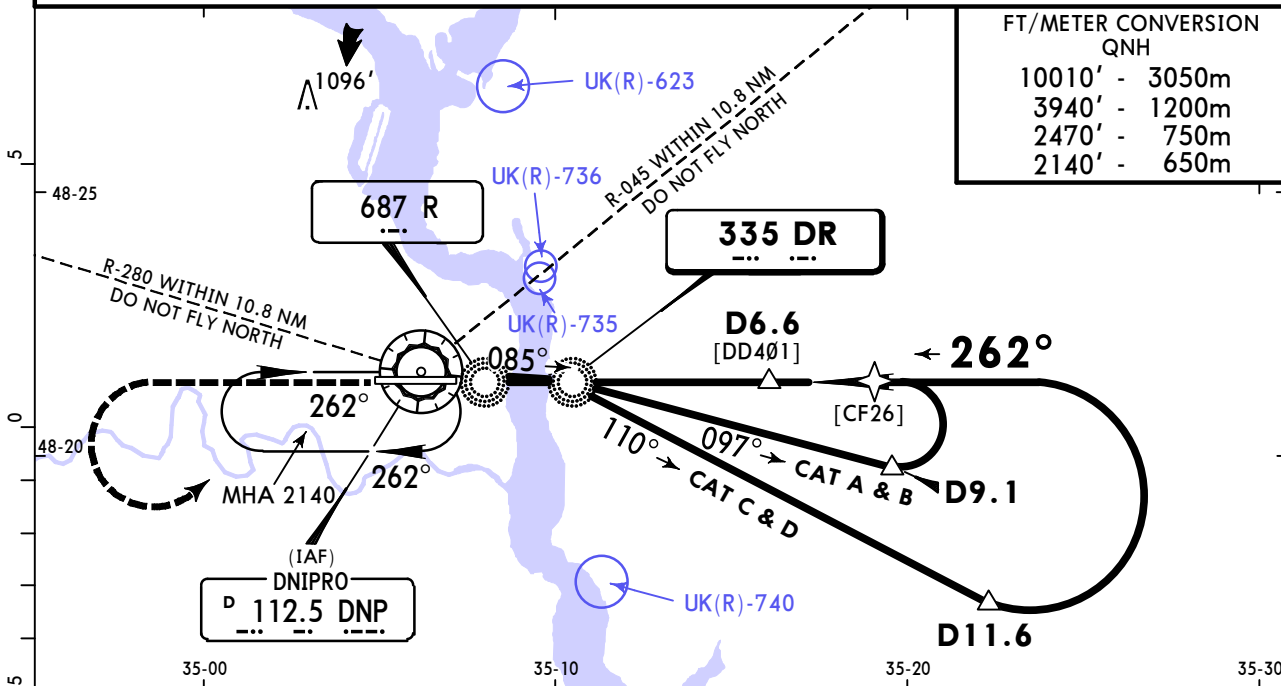
JAR-OPS STRAIGHT-IN LANDING RWY 08				CIRCLE-TO-LAND	
with DME MDA(H) 850' (397')		w/o DME MDA(H) 900' (447')		Not authorized North of airport between R-280 and R-045	
	ALS out		ALS out	Max Kts	MDA(H) VIS
A	RVR 900m	RVR 1500m	RVR 900m	100	890' (408') 1500m
B	RVR 1000m	RVR 1500m	RVR 1000m	135	990' (508') 1600m
C	RVR 1000m	RVR 1800m	RVR 1000m	180	1200' (718') 2400m
D	RVR 1400m	RVR 2000m	RVR 1400m	205	1500' (1018') 3600m

UKDD/DNK DNIPRO

JEPPESSEN
10 APR 20 **(16-2)** Eff 23 Apr

DNIPRO, UKRAINE NDB Rwy 26

ATIS 130.9 (Russian 134.9)		DNIPRO Radar (APP) 119.4		DNIPRO Tower 118.6		DNIPRO Ground 121.8	
BRIEFING STRIP NDB DR 335	Final Apch Crs 262°	With DME D6.6 MANDATORY 2470' (1998')	With DME MDA(H) 860' (388')	Apt Elev 482' Rwy 472'		2200 MSA DNP VOR	
		W/o DME No FAF	W/o DME MDA(H) 910' (438')				
MISSED APCH: Climb on 262° to 2470', then turn LEFT to VOR climbing to 3940', then according to chart.							
Alt Set: hPa (MM on req)		Rwy Elev: 17 hPa		Trans level: By ATC		Trans alt: 10010'	
DME required for FAF determination.							
Ground proximity warning system short term alerting is possible on final apch between 990' AMSL and and 660' AMSL due to terrain.							



Gnd speed-Kts	70	90	100	120	140	160	HIALS PAPI 2470' on 262°
Descent Angle 3.10°	384	494	548	658	768	878	
MAP at R NDB							
D6.6 to MAP	5.3	4:33	3:32	3:11	2:39	2:16	1:59

JAR-OPS STRAIGHT-IN LANDING RWY 26				CIRCLE-TO-LAND	
with DME MDA(H) 860' (388')		w/o DME MDA(H) 910' (438')		Not authorized North of airport between R-280 and R-045	
	ALS out		ALS out	Max Kts	MDA(H) VIS
A	RVR 900m	RVR 1500m	RVR 900m	100	890' (408') 1500m
B	RVR 1000m	RVR 1500m	RVR 1000m	135	990' (508') 1600m
C	RVR 1000m	RVR 1800m	RVR 1000m	180	1200' (718') 2400m
D	RVR 1400m	RVR 2000m	RVR 1400m	205	1500' (1018') 3600m

PANS OPS

CHANGES: Rwy elev. SMA added. Minimums.

Chart changes since cycle 09-2020

ADD = added chart, REV = revised chart, DEL = deleted chart.

ACT	PROCEDURE IDENT	INDEX	REV DATE	EFF DATE
DNIPRO, (DNIPRO - UKDD)				
REV	AIRPORT BRIEFING (GEN)	10-1P	08 May 2020	21 May 2020
REV	AIRPORT BRIEFING (ARR, DE...	10-1P1	08 May 2020	21 May 2020
REV	AIRPORT, AIRPORT INFO, TA...	10-9	08 May 2020	21 May 2020
REV	PARKING STANDS	10-9A	08 May 2020	21 May 2020
REV	PARKING STANDS COORDS	10-9B	08 May 2020	21 May 2020

TERMINAL CHART CHANGE NOTICES

Chart Change Notices for Airport UKDD

Type: Terminal

Effectivity: Temporary

Begin Date: 20200130

End Date: Until Further Notice

Airport name changed form DNIPRO INTL to DNIPRO.