

List of pages in this Trip Kit

Trip Kit Index

Airport Information For UKCW

Terminal Charts For UKCW

Revision Letter For Cycle 01-2014

Change Notices

Notebook

General Information

Location: Luhans'k Ukr
IATA Code: VSG
Lat/Long: N48° 25.1' E039° 22.5'
Elevation: 637 ft

Airport Use: Public
Magnetic Variation: 8.0°E

Fuel Types: Jet A-1
Repair Types: Major Airframe, Major Engine
Customs: Yes
Airport Type: IFR
Landing Fee: Yes
Control Tower: Yes
Jet Start Unit: No
LLWS Alert: No
Beacon: No

Sunrise: 0514 Z
Sunset: 1343 Z,

Runway Information

Runway: 09
Length x Width: 9321 ft x 148 ft
Surface Type: asphalt
TDZ-Elev: 594 ft
Lighting: Edge, ALS

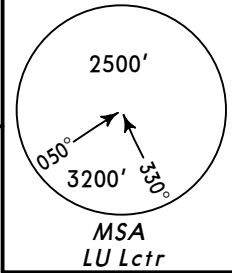
Runway: 27
Length x Width: 9321 ft x 148 ft
Surface Type: asphalt
TDZ-Elev: 637 ft
Lighting: Edge, ALS

Communication Information

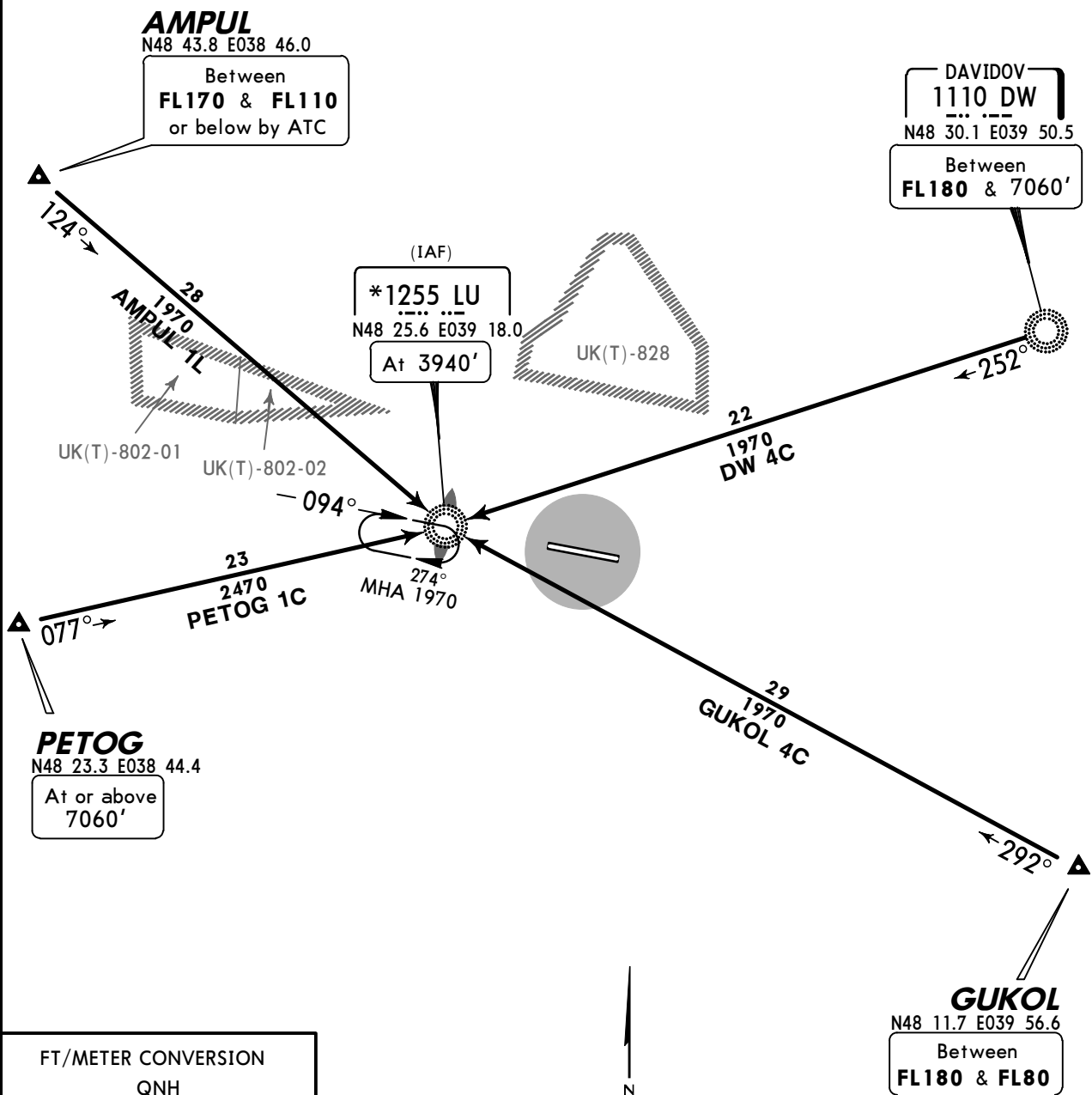
Luhans'k Tower 120.6
Luhans'k Radar Approach Control 132.0

Apt Elev
637'

Alt Set: hPa (MM on request)
Trans level: By ATC Trans alt: 10010'
Activities within areas UK(T)-802-01, UK(T)-802-02 & UK(T)-828
not authorized without prior coordination with LUHANS'K Tower.



AMPUL ONE LIMA (AMPUL 1L) [AMPUL1L]
DAVIDOV FOUR CHARLIE (DW 4C)
GUKOL FOUR CHARLIE (GUKOL 4C) [GUKO4C]
PETOG ONE CHARLIE (PETOG 1C) [PETO1C]
RWY 09 ARRIVALS



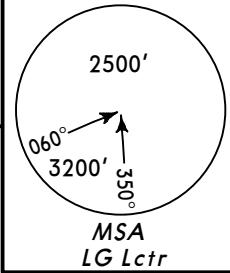
FT/METER CONVERSION	
QNH	
10010'	- 3050m
7060'	- 2150m
3940'	- 1200m
1970'	- 600m



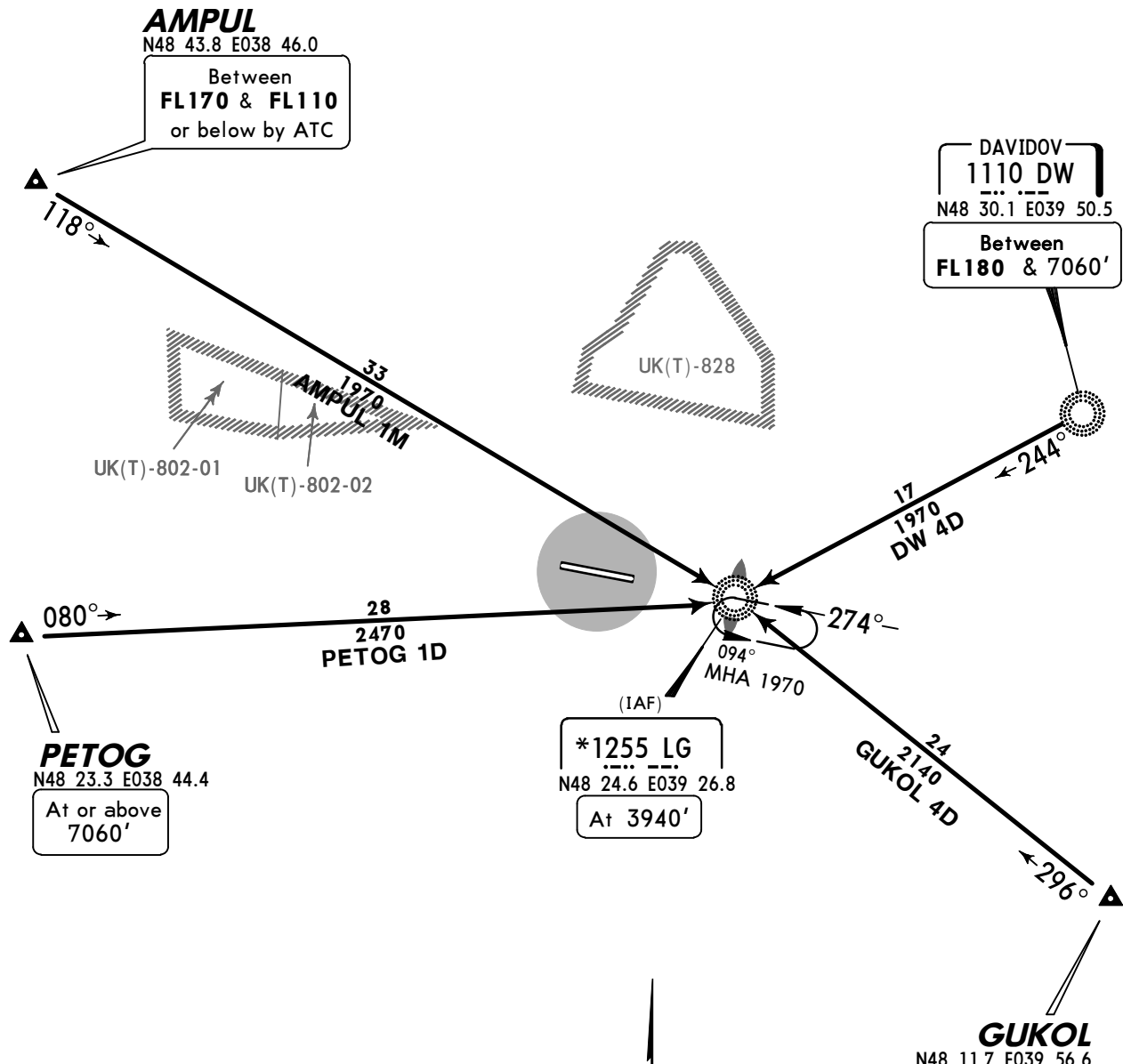
STAR	ROUTING
AMPUL 1L	On 124° bearing to LU.
DW 4C	On 252° bearing to LU.
GUKOL 4C	On 292° bearing to LU.
PETOG 1C	On 077° bearing to LU.

Apt Elev
637'

Alt Set: hPa (MM on request)
Trans level: By ATC Trans alt: 10010'
Activities within areas UK(T)-802-01, UK(T)-802-02 & UK(T)-828
not authorized without prior coordination with LUHANS'K Tower.



AMPUL ONE MIKE (AMPUL 1M) [AMPUL1M]
DAVIDOV FOUR DELTA (DW 4D)
GUKOL FOUR DELTA (GUKOL 4D) [GUKOL4D]
PETOG ONE DELTA (PETOG 1D) [PETOG1D]
RWY 27 ARRIVALS



AMPUL
N48 43.8 E038 46.0
Between
FL170 & FL110
or below by ATC

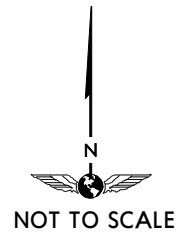
DAVIDOV
1110 DW
N48 30.1 E039 50.5
Between
FL180 & 7060'

PETOG
N48 23.3 E038 44.4
At or above
7060'

(IAF)
*1255 LG
N48 24.6 E039 26.8
At 3940'

GUKOL
N48 11.7 E039 56.6
Between
FL180 & FL80

FT/METER CONVERSION	
QNH	
10010'	- 3050m
7060'	- 2150m
3940'	- 1200m
1970'	- 600m

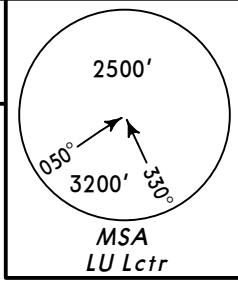


STAR	ROUTING
AMPUL 1M	On 118° bearing to LG.
DW 4D	On 244° bearing to LG.
GUKOL 4D	On 296° bearing to LG.
PETOG 1D	On 080° bearing to LG.

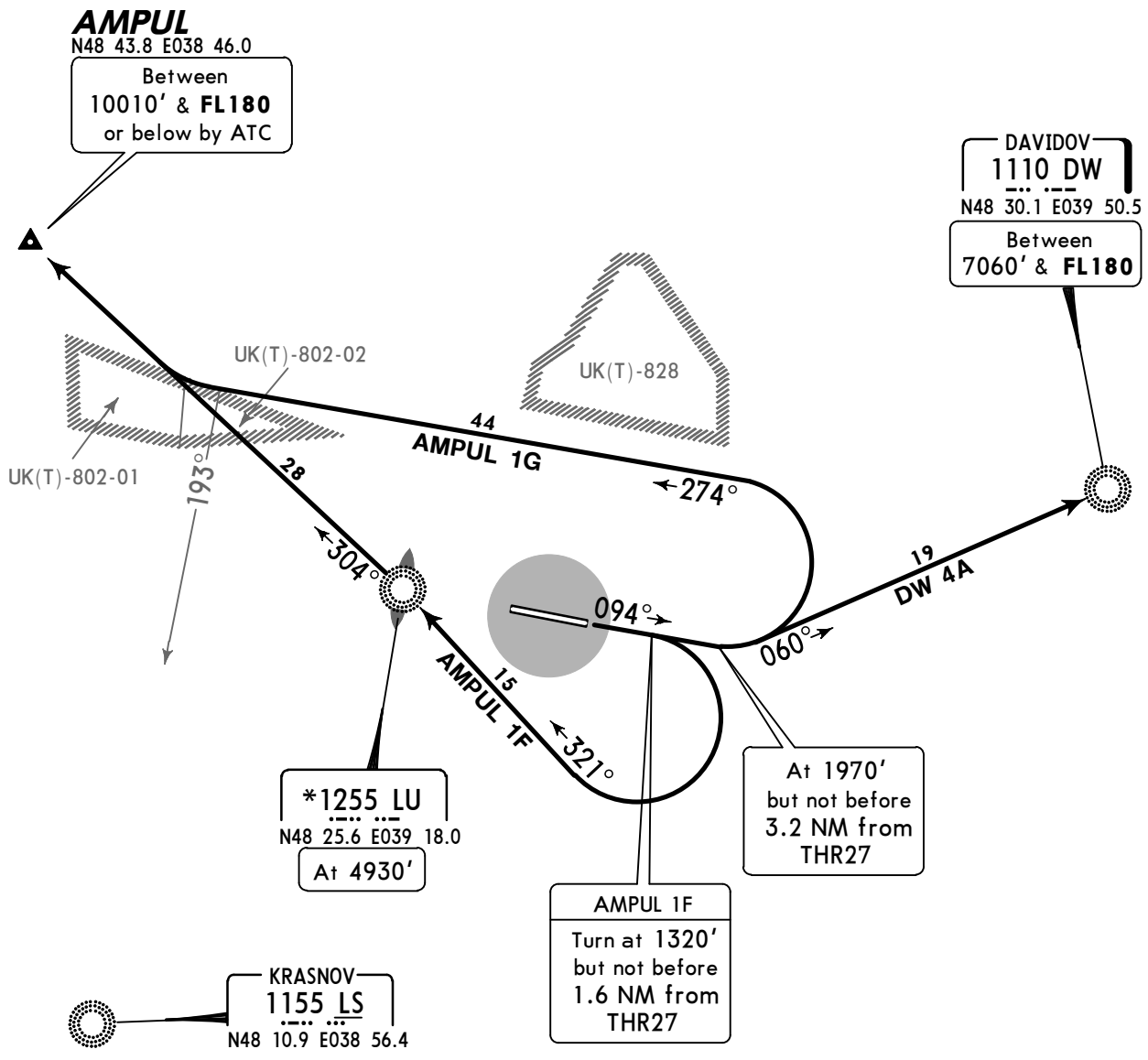
CHANGES: STARs revised; FL conversion.

Apt Elev
637'

Trans level: By ATC Trans alt: 10010'
Activities within areas UK(T)-802-01, UK(T)-802-02 & UK(T)-828
not authorized without prior coordination with LUHANS'K Tower.



AMPUL ONE FOXTROT (AMPUL 1F) [AMPUL1F]
AMPUL ONE GOLF (AMPUL 1G) [AMPUL1G]
DAVIDOV FOUR ALFA (DW 4A)
RWY 09 DEPARTURES



AMPUL
N48 43.8 E038 46.0
Between
10010' & FL180
or below by ATC

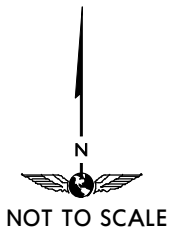
DAVIDOV
1110 DW
N48 30.1 E039 50.5
Between
7060' & FL180

*1255 LU
N48 25.6 E039 18.0
At 4930'

AMPUL 1F
Turn at 1320'
but not before
1.6 NM from
THR27

At 1970'
but not before
3.2 NM from
THR27

KRASNOV
1155 LS
N48 10.9 E038 56.4



FT/METER CONVERSION	
QNH	
1320'	- 400m
1970'	- 600m
4930'	- 1500m
7060'	- 2150m
10010'	- 3050m

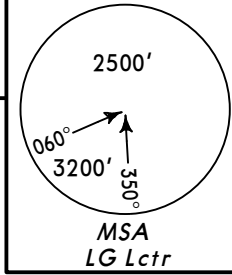
SID	ROUTING
AMPUL 1F	Climb on 094° track to 1320', turn RIGHT, intercept 321° bearing to LU, turn LEFT, 304° bearing to AMPUL.
AMPUL 1G	Climb on 094° track to 1970', turn LEFT, 274° track, when passing 193° bearing to LS turn RIGHT, intercept 304° bearing from LU to AMPUL.
DW 4A	Climb on 094° track to 1970', turn LEFT, intercept 060° bearing to DW.

CHANGES: SIDs revised; FL conversion.

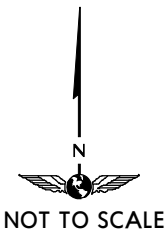
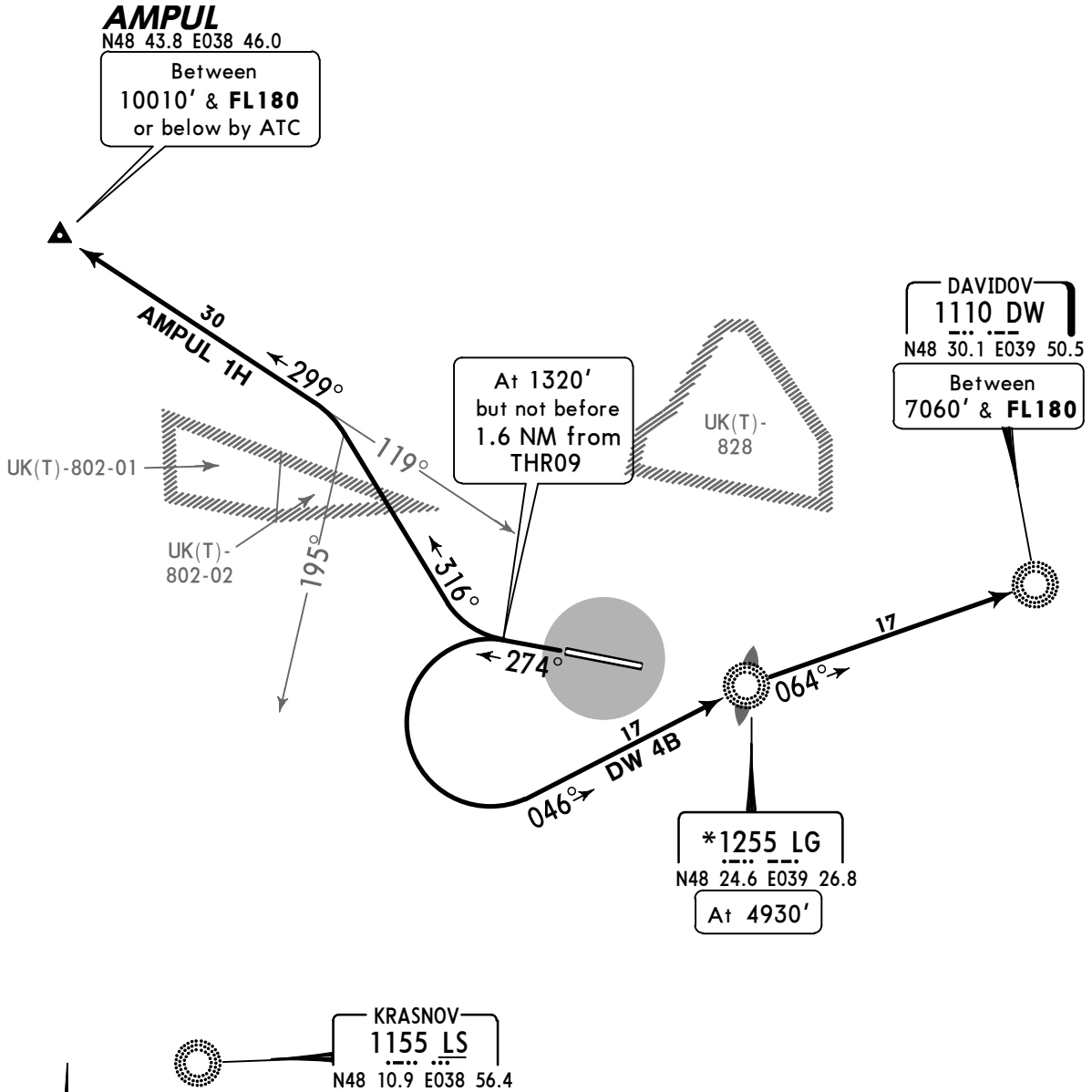
© JEPPESEN, 2003, 2012. ALL RIGHTS RESERVED.

Apt Elev
637'

Trans level: By ATC Trans alt: 10010'
Activities within areas UK(T)-802-01, UK(T)-802-02 & UK(T)-828
not authorized without prior coordination with LUHANS'K Tower.



AMPUL ONE HOTEL (AMPUL 1H) [AMPUL1H]
DAVIDOV FOUR BRAVO (DW 4B)
RWY 27 DEPARTURES

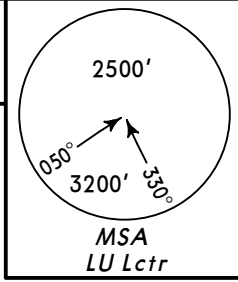


FT/METER CONVERSION	
QNH	
1320'	- 400m
4930'	- 1500m
7060'	- 2150m
10010'	- 3050m

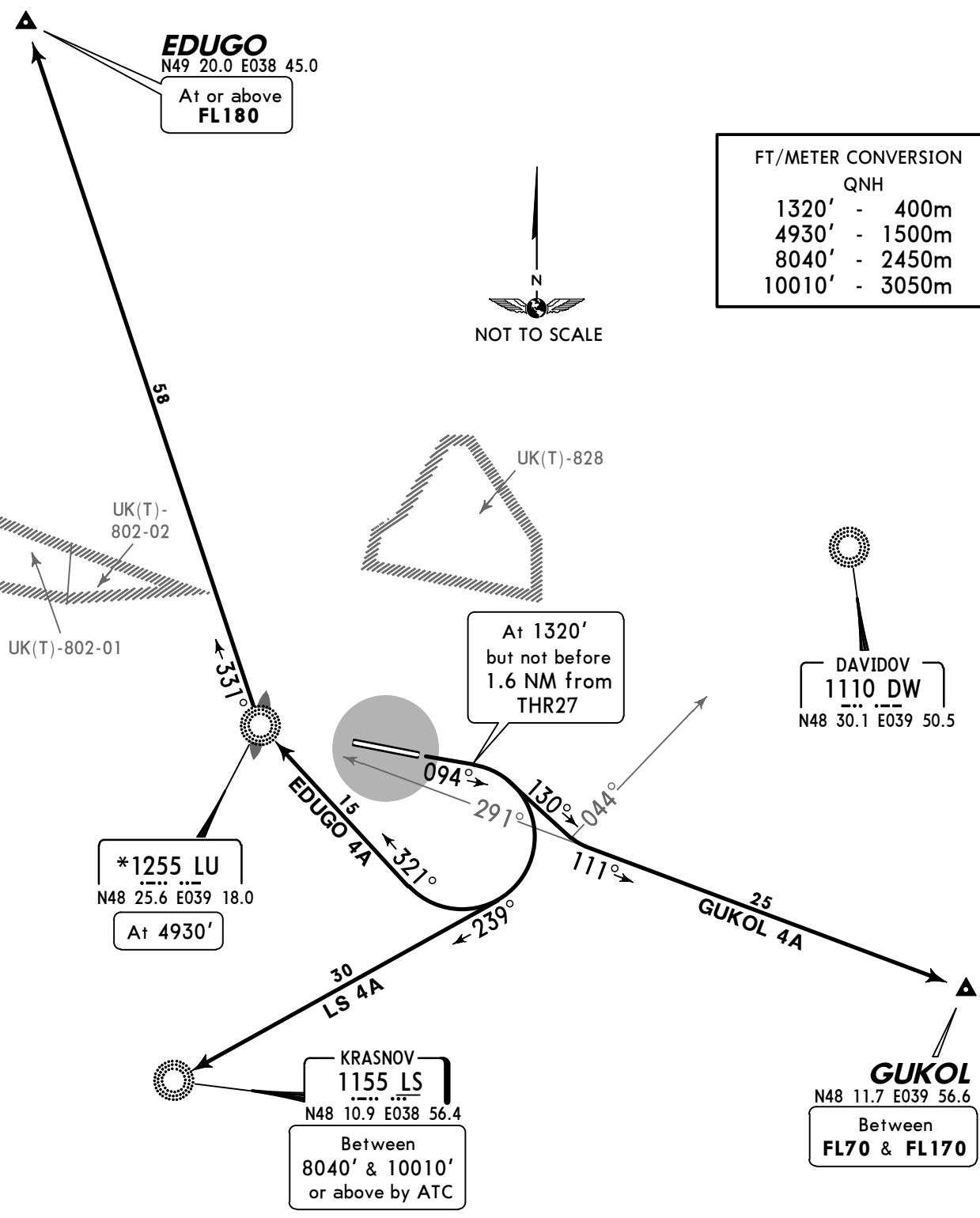
SID	ROUTING
AMPUL 1H	Climb on 274° track to 1320', turn RIGHT, 316° track, when passing 195° bearing to LS turn LEFT, intercept 299° bearing from LG to AMPUL.
DW 4B	Climb on 274° track to 1320', turn LEFT, intercept 046° bearing to LG, turn RIGHT, 064° bearing to DW.

Apt Elev
637'

Trans level: By ATC Trans alt: 10010'
Activities within areas UK(T)-802-01, UK(T)-802-02 & UK(T)-828
not authorized without prior coordination with LUHANS'K Tower.



**EDUGO FOUR ALFA (EDUGO 4A) [EDUG4A]
GUKOL FOUR ALFA (GUKOL 4A) [GUKO4A]
KRASNOV FOUR ALFA (LS 4A)
RWY 09 DEPARTURES**



FT/METER CONVERSION

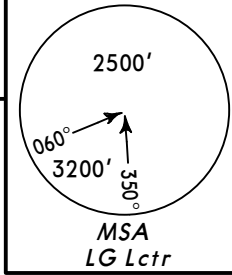
FT	METER
1320'	400m
4930'	1500m
8040'	2450m
10010'	3050m

SID	ROUTING
EDUGO 4A	Climb on 094° track to 1320', turn RIGHT, intercept 321° bearing to LU, turn RIGHT, 331° bearing to EDUGO.
GUKOL 4A	Climb on 094° track to 1320', turn RIGHT, 130° track, when passing 044° bearing to DW turn LEFT, intercept 111° bearing from LU to GUKOL.
LS 4A	Climb on 094° track to 1320', turn RIGHT, intercept 239° bearing to LS.

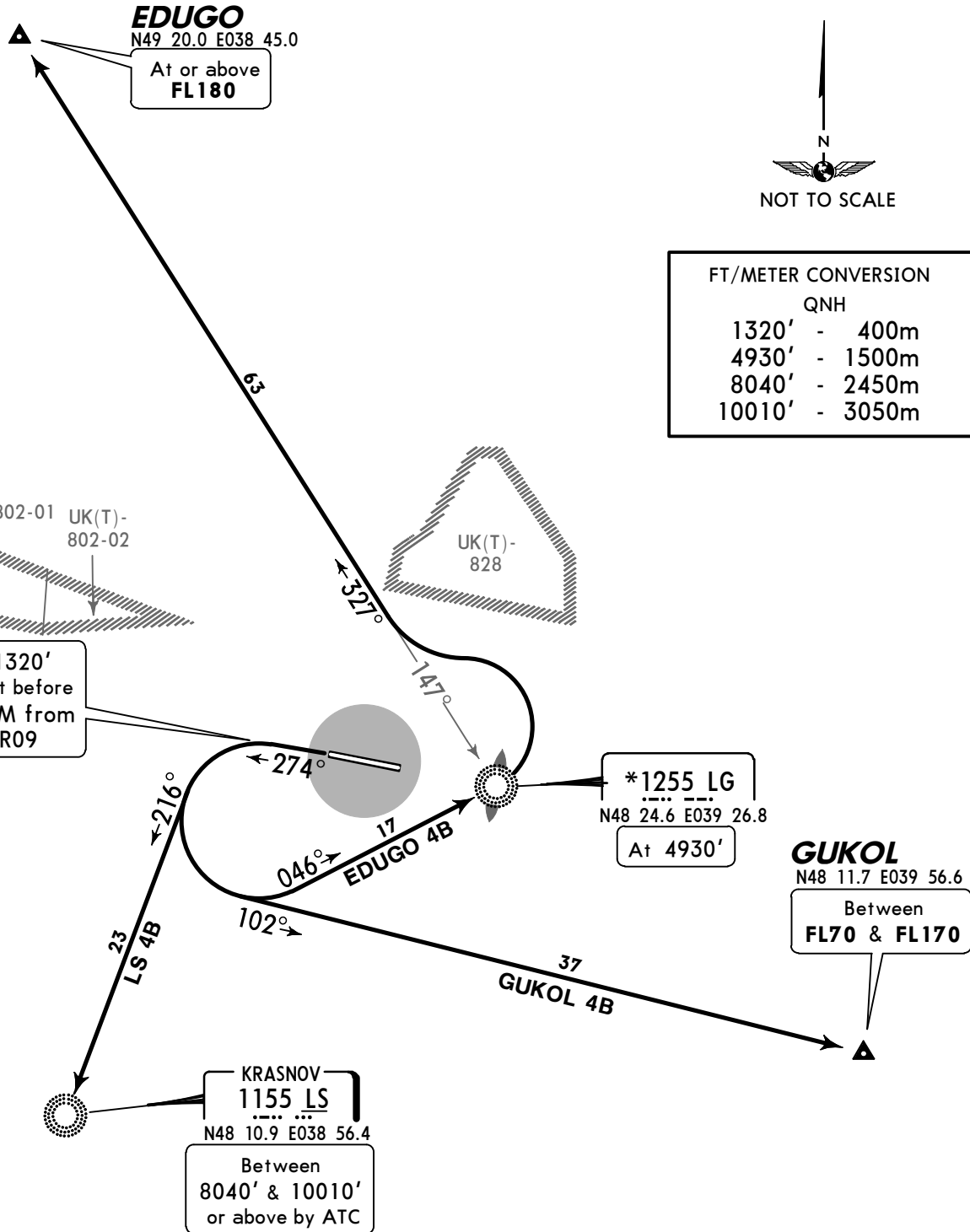
CHANGES: SIDs revised & withdrawn; FL conversion.

Apt Elev
637'

Trans level: By ATC Trans alt: 10010'
Activities within areas UK(T)-802-01, UK(T)-802-02 & UK(T)-828
not authorized without prior coordination with LUHANS'K Tower.



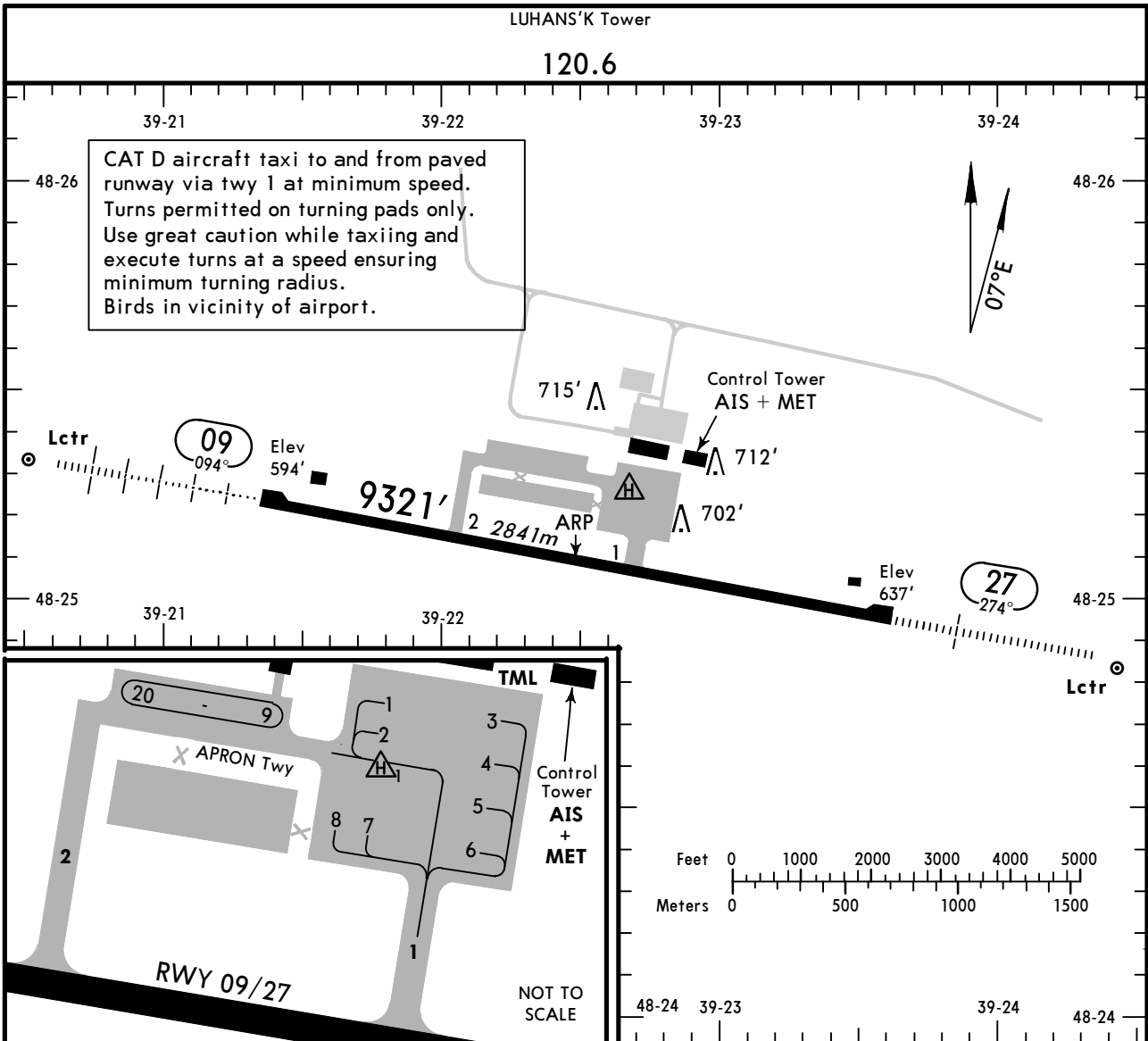
**EDUGO FOUR BRAVO (EDUGO 4B) [EDUG4B]
GUKOL FOUR BRAVO (GUKOL 4B) [GUKO4B]
KRASNOV FOUR BRAVO (LS 4B)
RWY 27 DEPARTURES**



FT/METER CONVERSION

FT	METER
1320'	400m
4930'	1500m
8040'	2450m
10010'	3050m

SID	ROUTING
EDUGO 4B	Climb on 274° track to 1320', turn LEFT, intercept 046° bearing to LG, turn LEFT, intercept 327° bearing from LG to EDUGO.
GUKOL 4B	Climb on 274° track to 1320', turn LEFT, 102° track to GUKOL.
LS 4B	Climb on 274° track to 1320', turn LEFT, intercept 216° bearing to LS.



ADDITIONAL RUNWAY INFORMATION

RWY	HIRL (60m)	HIALS	PAPI-L (angle 3.0°)	RVR	USABLE LENGTHS			WIDTH
					Threshold	Landing Beyond Glide Slope	TAKE-OFF	
09 27						8592' 2619m 8288' 2526m		148' 45m

LOW VISIBILITY PROCEDURE (LVP)

LVP shall be applied when RVR is 400m and less.
 Pilots will be informed by ATC about beginning of LVP.
 Taxiing in the manoeuvring zone is permitted only for one aircraft at a time and with Follow-me car.

JAR-OPS

TAKE-OFF **1**

	All Rwys		
	LVP must be in force		
A	RCLM (DAY only) or RL	RCLM (DAY only) or RL	NIL (DAY only)
B	250m	400m	500m
C			
D	300m		

1 Operators applying U.S. Ops Specs: CL required below 300m.

STRAIGHT-IN RWY		A	B	C	D
09	ILS <i>FULL</i> <i>Limited</i> <i>ALS out</i>	794' (200') R550m R750m R1200m	794' (200') R550m R750m R1200m	794' (200') R550m R750m R1200m	794' (200') R550m R750m R1200m
	LOC	NOT AUTHORIZED	NOT AUTHORIZED	NOT AUTHORIZED	NOT AUTHORIZED
	NDB ① ② <i>ALS out</i>	920' (326') R1000m R1500m	920' (326') R1000m R1500m	920' (326') R1200m R1500m	920' (326') R1200m R1500m
	NDB ③ <i>ALS out</i>	1090' (496') R1700m C2500m	1090' (496') R1700m C2500m	1090' (496') R1900m C2700m	1090' (496') R1900m C2700m
27	ILS <i>FULL</i> <i>Limited</i> <i>ALS out</i>	836' (200') R550m R750m R1200m	836' (200') R550m R750m R1200m	836' (200') R550m R750m R1200m	836' (200') R550m R750m R1200m
	LOC	NOT AUTHORIZED	NOT AUTHORIZED	NOT AUTHORIZED	NOT AUTHORIZED
	NDB ① ② <i>ALS out</i>	970' (334') R1000m R1500m	970' (334') R1000m R1500m	970' (334') R1200m R1500m	970' (334') R1200m R1500m
	NDB ③ <i>ALS out</i>	1270' (634') C2400m C3100m	1270' (634') C2400m C3100m	1270' (634') C2600m C3300m	1270' (634') C2600m C3300m

- ① Continuous Descent Final Approach.
 ② with LOM.
 ③ w/o LOM.

CIRCLE-TO-LAND	100 KT	135 KT	180 KT	205 KT
After ILS to rwy 09	1020' (426') ④	1100' (506') ④	1200' (606') ④	1300' (706') ④
After NDB to rwy 09	1090' (496') ④	1100' (506') ④	1200' (606') ④	1300' (706') ④
After ILS to rwy 27	1040' (404')	1140' (504')	1240' (604')	1340' (704')
After NDB to rwy 27	1270' (634') V1500m ⑤	1270' (634') V1600m ⑤	1270' (634') V2400m ⑤	1340' (704') V3600m ⑤

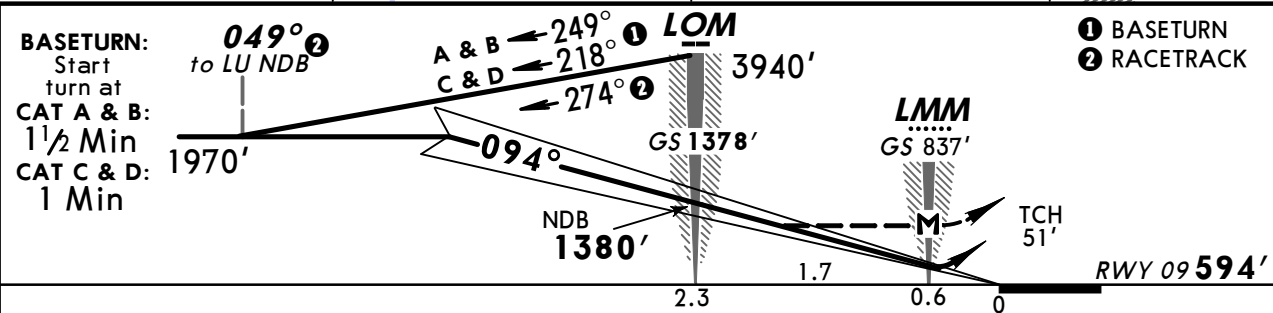
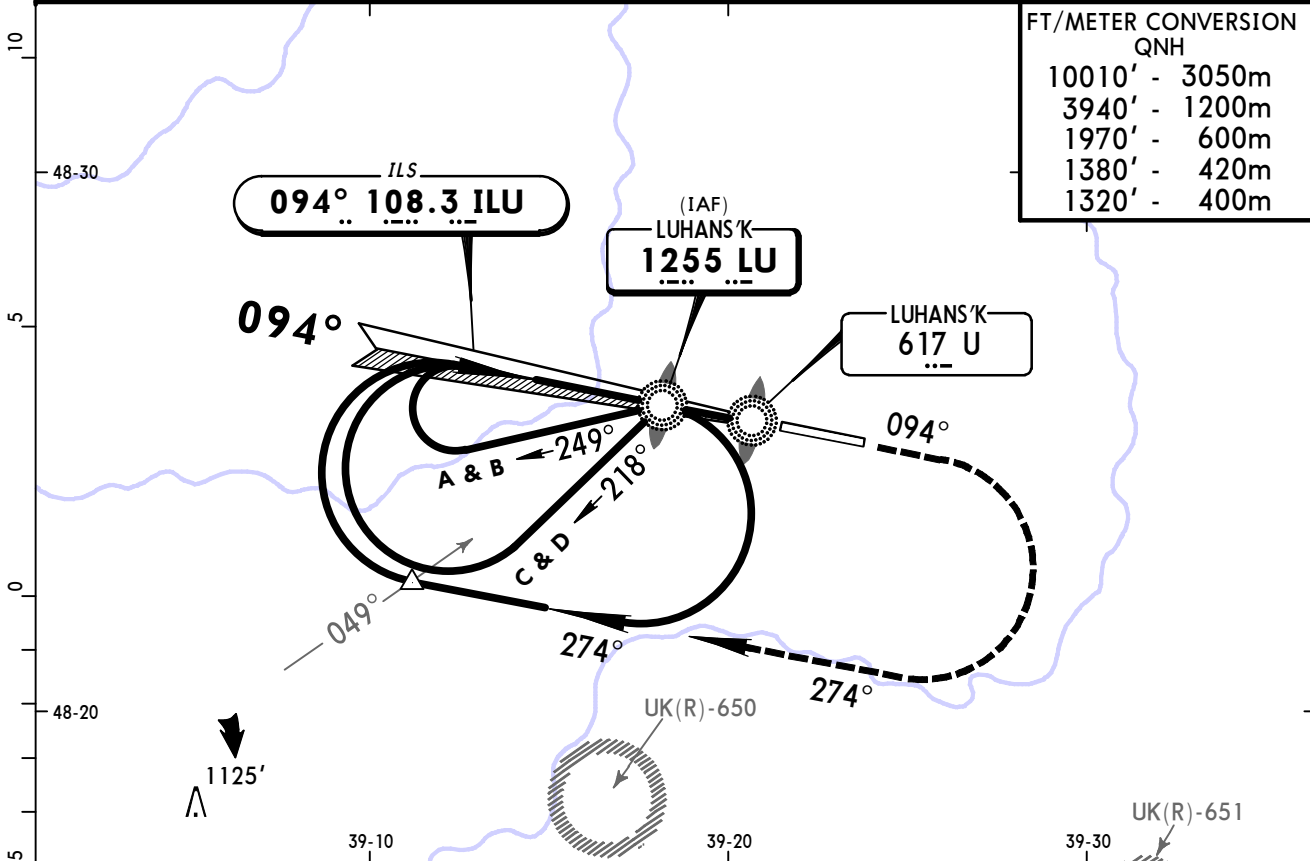
- ④ Circling height based on rwy 09 thresh elev of 594'.
 ⑤ or higher minimums of preceding straight-in approach.

TAKE-OFF RWY 09, 27

	LVP must be in force RCLM (DAY only) or RL	RCLM (DAY only) or RL	NIL (DAY only)
A	250m	400m	500m
B			
C	300m		
D			

LUHANS'K Approach (R)				LUHANS'K Tower	
132.0				120.6	
LOC ILU 108.3	Final Apch Crs 094°	GS LOM 1378' (784')	ILS DA(H) 794' (200')	Apt Elev 636'	
NDB LU 1255		Minimum Alt LOM 1380' (786')	NDB MDA(H) (CONDITIONAL) 920' (326')	RWY 594'	
MISSED APCH: Climb on 094° to 1320', then turn RIGHT on 274° climbing to 1970', then according to chart.					<p>MSA LU NDB</p>

Alt Set: hPa (MM on req) Rwy Elev: 22 hPa Trans level: By ATC Trans alt: 10010'



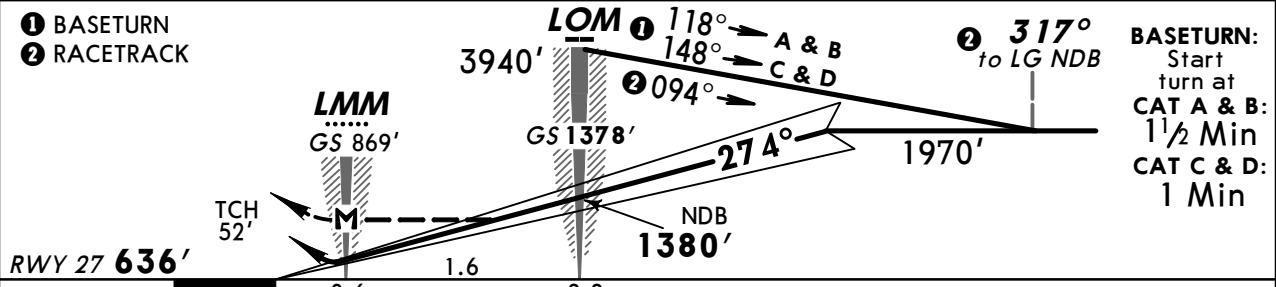
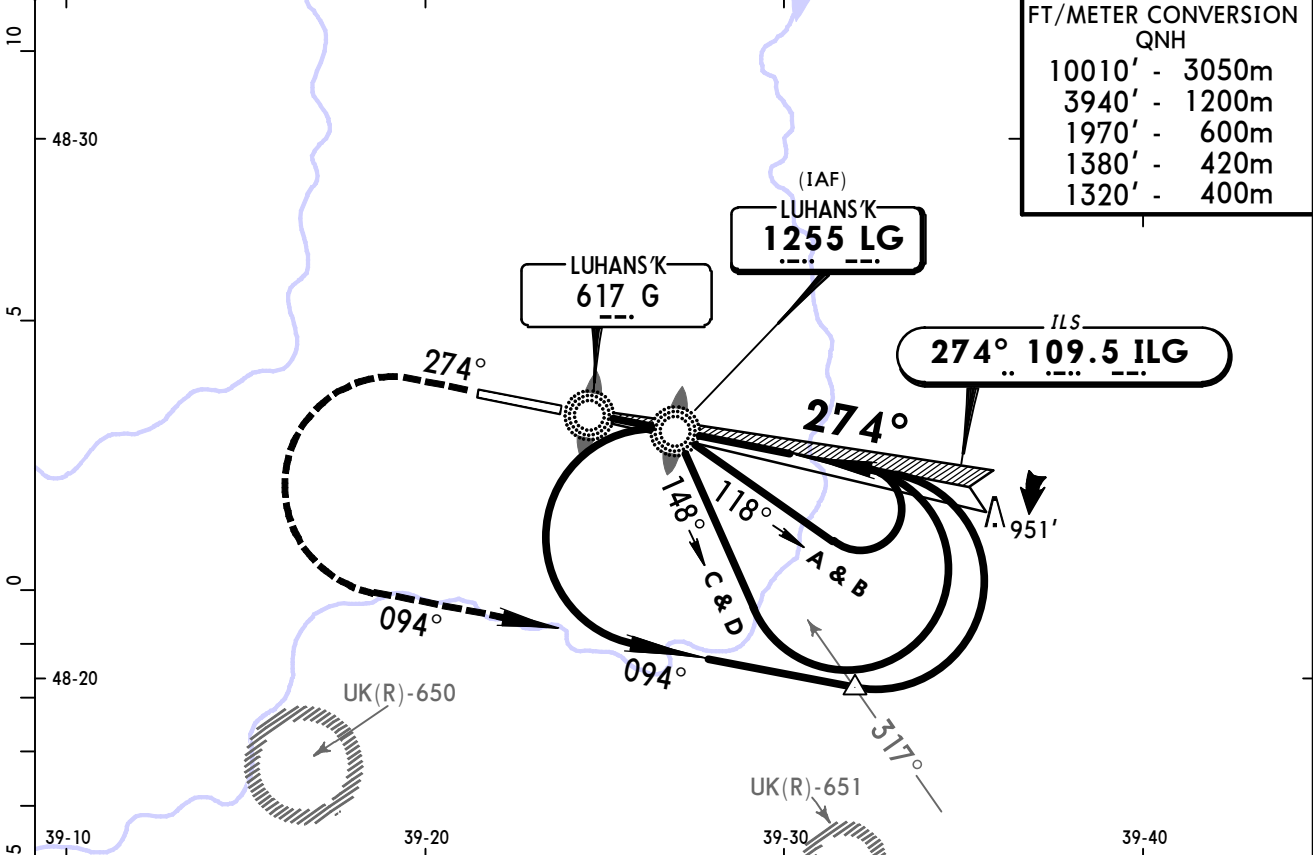
Gnd speed-Kts	70	90	100	120	140	160		1320'	on 094°	274°	1970'
ILS GS 3.00° or NDB Desc Grad 5.2%	377	484	538	646	753	861		↑	RT	↑	
MAP at LMM											

JAR-OPS						STRAIGHT-IN LANDING RWY 09			CIRCLE-TO-LAND 1			
ILS		LOC (GS out)		with LOM		NDB		w/o LOM		Max Kts	MDA(H)	VIS
DA(H) 794' (200')				MDA(H) 920' (326')		MDA(H) 1090' (496')		MDA(H) 1090' (496')				
FULL		ALS out		ALS out		ALS out		ALS out		100	1020' (426')	1500m
A				RVR 900m		RVR 1000m		RVR 1500m		135	1100' (506')	1600m
B				RVR 1500m		RVR 1200m		RVR 2000m		180	1200' (606')	2400m
C		RVR 550m	RVR 1000m	NOT AUTH		RVR 1800m				205	1300' (706')	3600m
D				RVR 1400m		RVR 2000m		RVR 1600m				

1 Circling height based on rwy 09 thresh elev of 594'. 2 After NDB apch: 1090' (496')

LUHANS'K Approach (R)				LUHANS'K Tower	
132.0				120.6	
LOC ILG 109.5	Final Apch Crs 274°	GS LOM 1378' (742')	ILS DA(H) 836' (200')	Apt Elev 636'	
NDB LG 1255		Minimum Alt LOM 1380' (744')	NDB MDA(H) (CONDITIONAL) 970' (334')	RWY 636'	
MISSED APCH: Climb on 274° to 1320', then turn LEFT on 094° climbing to 1970', then according to chart.					<p>MSA LG NDB</p>

Alt Set: hPa (MM on req) Rwy Elev: 23 hPa Trans level: By ATC Trans alt: 10010'



Gnd speed-Kts	70	90	100	120	140	160	HIALS	1320' on 274°	094° LT	1970'
ILS GS 3.00° or NDB Desc Grad 5.2%	377	484	538	646	753	861				

JAR-OPS						STRAIGHT-IN LANDING RWY 27				CIRCLE-TO-LAND				
ILS		LOC (GS out)		with LOM		NDB		w/o LOM		Max Kts	MDA(H)		VIS	
DA(H) 836' (200')				MDA(H) 970' (334')				MDA(H) 1270' (634')			100	1040' (404')	1500m	1500m
FULL		ALS out		ALS out		ALS out		ALS out		135	1140' (504')	1600m	1600m	
A				RVR 900m	RVR 1500m	RVR 1000m	RVR 1500m			180	1240' (604')	2400m	2400m	
B				RVR 1000m	RVR 1800m	RVR 1200m	RVR 2000m			205	1340' (704')	3600m	3600m	
C	RVR 550m	RVR 1000m	NOT AUTH	RVR 1400m	RVR 2000m	RVR 1600m								
D														

Chart changes since cycle 26-2013

ADD = added chart, REV = revised chart, DEL = deleted chart.

ACT	PROCEDURE IDENT	INDEX	REV DATE	EFF DATE
-----	-----------------	-------	----------	----------

LUHANS'K, (LUHANS'K - UKCW)

TERMINAL CHART CHANGE NOTICES

No Chart Change Notices for Airport UKCW