

General Information

Location: KHERSON UKR
ICAO/IATA: UKOH / KHE
Lat/Long: N46° 40.57', E032° 30.37'
Elevation: 141 ft

Airport Use: Public
Daylight Savings: Observed
UTC Conversion: -2:00 = UTC
Magnetic Variation: 7.0° E

Repair Types: Minor Airframe, Minor Engine
Customs: Yes
Airport Type: IFR
Landing Fee: Yes
Control Tower: Yes
Jet Start Unit: No
LLWS Alert: No
Beacon: No

Sunrise: 0447 Z
Sunset: 1421 Z

Runway Information

Runway: 03
Length x Width: 8202 ft x 138 ft
Surface Type: asphalt
TDZ-Elev: 137 ft
Lighting: Edge, ALS

Runway: 21
Length x Width: 8202 ft x 138 ft
Surface Type: asphalt
TDZ-Elev: 139 ft
Lighting: Edge, ALS

Communication Information

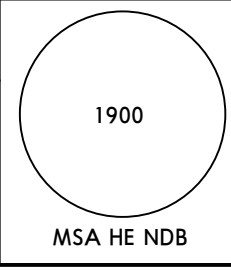
Kherson Tower: 121.200
Odesa Information: 134.500 Flight Info Service

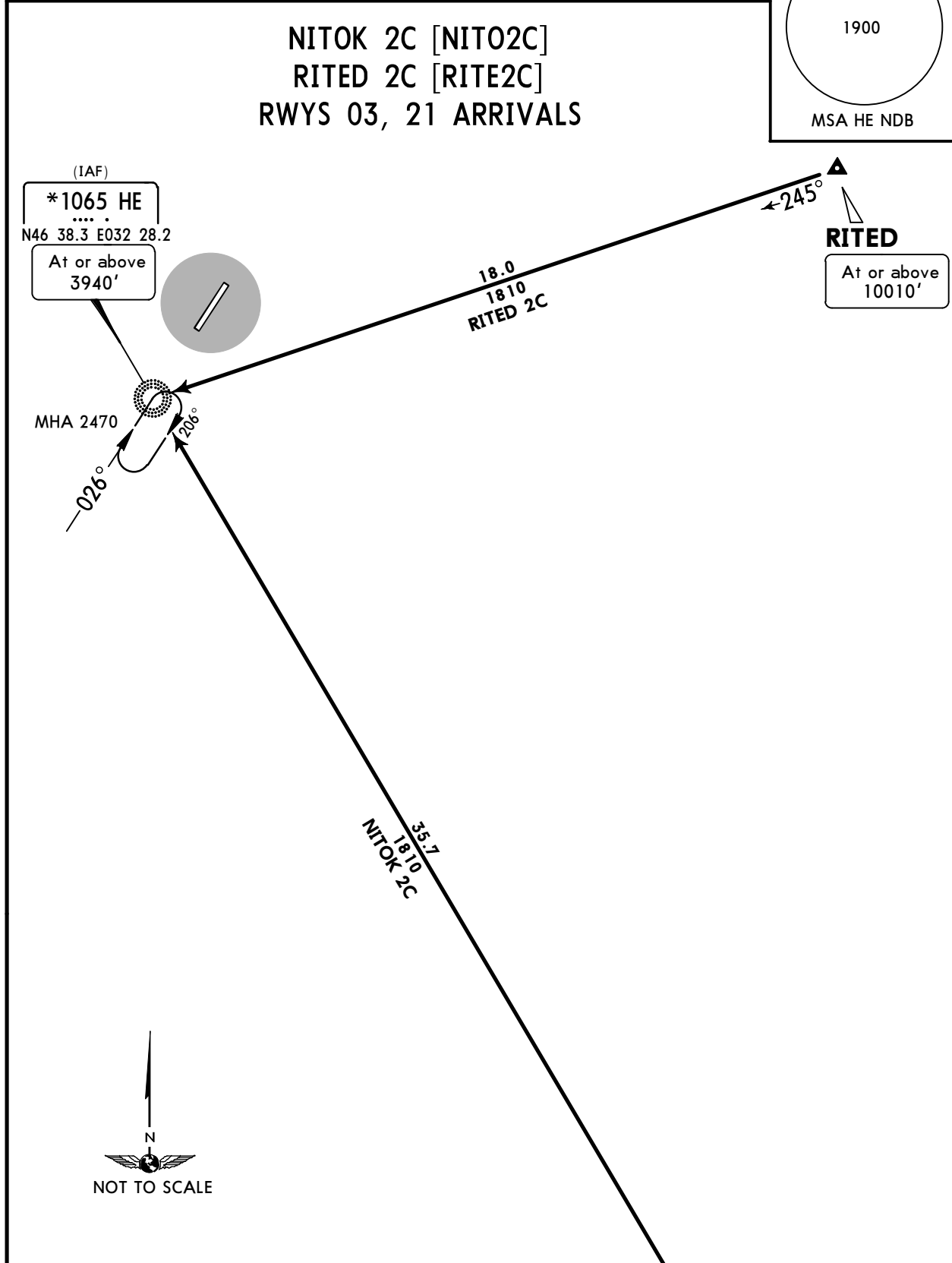
UKOH/KHE
KHERSON INTL

JEPPESEN
10 AUG 18 **10-2** **Eff 16 Aug**

KHERSON, UKRAINE

STAR

Apt Elev 141'	Alt Set: hPa Trans level: By ATC Trans alt: 10010'	
<p>NITOK 2C [NITO2C] RITED 2C [RITE2C] RWYS 03, 21 ARRIVALS</p>		



(IAF)
***1065 HE**
.....
N46 38.3 E032 28.2
At or above
3940'

RITED
At or above
10010'

NITOK
At or above
8040'

FT/METER CONVERSION	
QNH	
10010'	- 3050m
8040'	- 2450m
3940'	- 1200m
2470'	- 750m

STAR	ROUTING
NITOK 2C	On 323° bearing to HE NDB, then according to approach chart.
RITED 2C	On 245° bearing to HE NDB, then according to approach chart.

UKOH/KHE
KHERSON INTL

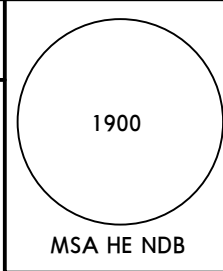
JEPPESEN
 10 AUG 18 **10-2A** **Eff 16 Aug**

KHERSON, UKRAINE

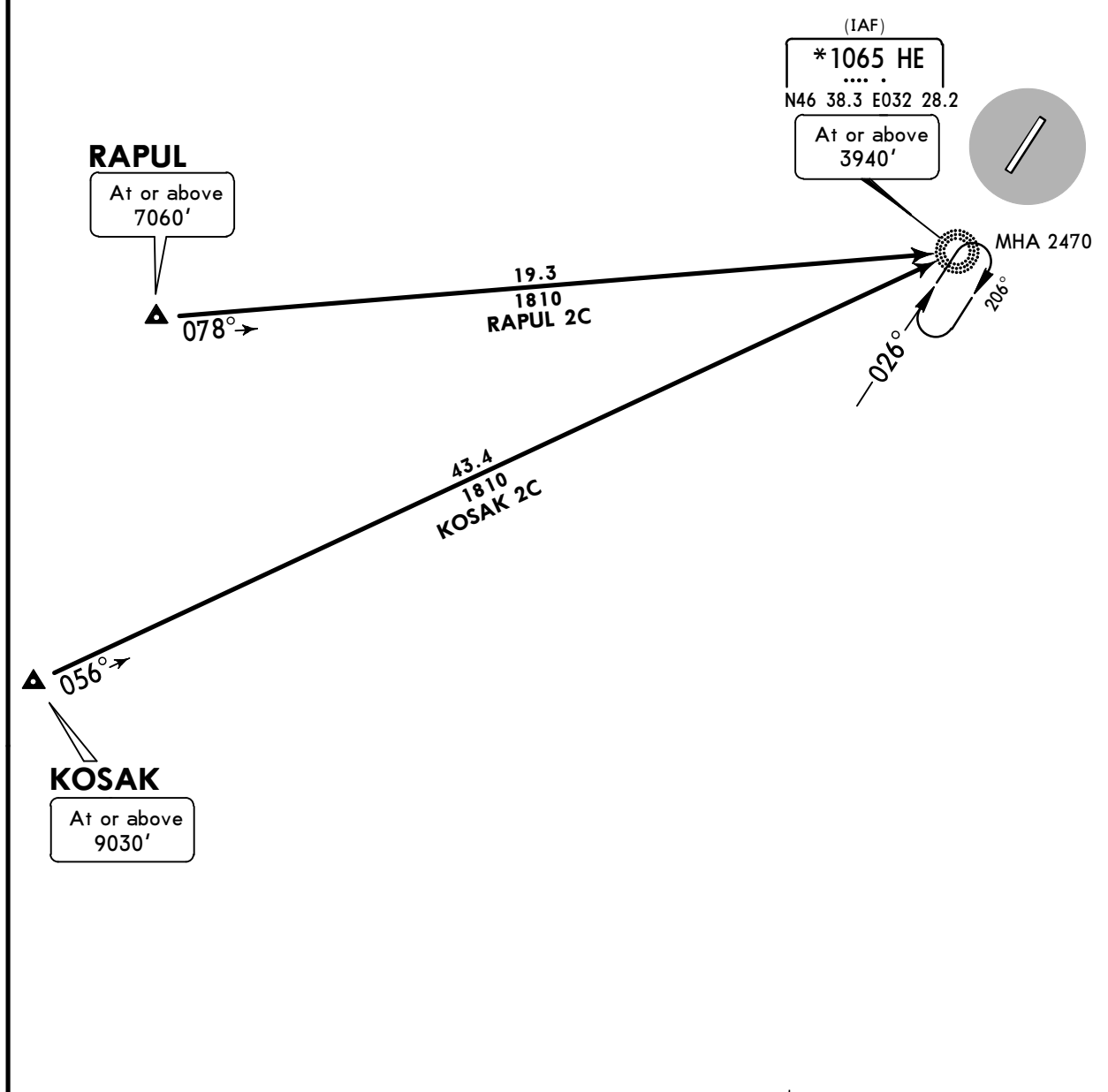
STAR

Apt Elev
141'

Alt Set: hPa
 Trans level: By ATC Trans alt: 10010'



KOSAK 2C [KOSA2C]
RAPUL 2C [RAPU2C]
RWYS 03, 21 ARRIVALS



RAPUL
 At or above
7060'

(IAF)
***1065 HE**

 N46 38.3 E032 28.2
 At or above
3940'

KOSAK
 At or above
9030'

FT/METER CONVERSION	
QNH	
10010'	- 3050m
9030'	- 2750m
7060'	- 2150m
3940'	- 1200m
2470'	- 750m



STAR	ROUTING
KOSAK 2C	On 056° bearing to HE NDB, then according to approach chart.
RAPUL 2C	On 078° bearing to HE NDB, then according to approach chart.

UKOH/KHE
KHERSON INTL

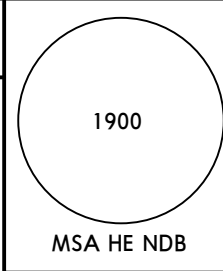
JEPPESEN
 10 AUG 18 **10-3** **Eff 16 Aug**

KHERSON, UKRAINE

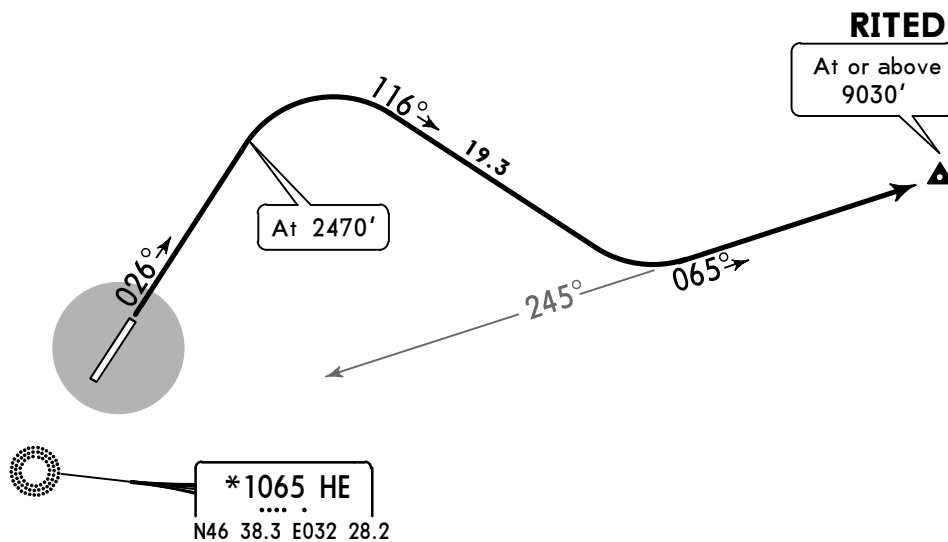
SID

Apt Elev
141'

Trans level: By ATC Trans alt: 10010'
 In unable to comply SID advise ATC.



RITED 2A [RITE2A]
RWY 03 DEPARTURE



RITED
 At or above
 9030'

FT/METER CONVERSION

	QNH
2470'	- 750m
9030'	- 2750m
10010'	- 3050m



This SID requires a minimum climb gradient of 7.5% up to 9030.

Gnd speed-KT	75	100	150	200	250	300
7.5% V/V (fpm)	570	760	1139	1519	1899	2279

ROUTING

Climb on 026° track to 2470', turn RIGHT, 116° track, turn LEFT, intercept 065° bearing from HE NDB to RITED.

UKOH/KHE
KHERSON INTL

JEPPESEN
10 AUG 18 (10-3A) Eff 16 Aug

KHERSON, UKRAINE
SID

Apt Elev
141'

Trans level: By ATC Trans alt: 10010'
If unable to comply SID advise ATC.

1900

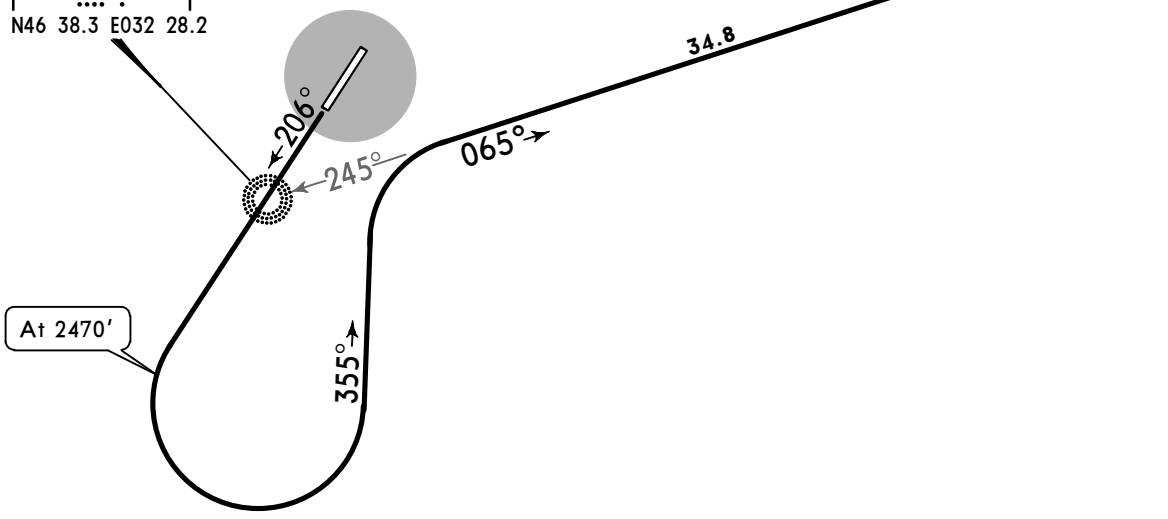
MSA HE NDB

RITED 2B [RITE2B] RWY 21 DEPARTURE

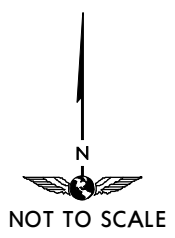
*1065 HE
N46 38.3 E032 28.2

At 2470'

RITED
At or above
9030'



FT/METER CONVERSION	
QNH	
2470'	- 750m
9030'	- 2750m
10010'	- 3050m



ROUTING

Climb on 206° track to 2470', turn LEFT, 355° track, turn RIGHT, intercept 065° bearing from HE NDB to RITED.

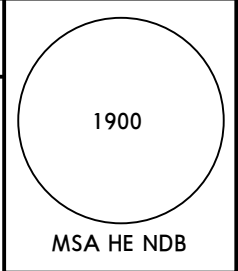
UKOH/KHE
KHERSON INTL

JEPPESEN
 10 AUG 18 **10-3B** **Eff 16 Aug**

KHERSON, UKRAINE
SID

Apt Elev
141'

Trans level: By ATC Trans alt: 10010'
 If unable to comply SID advise ATC.



KOSAK 1A [KOSA1A]
RAPUL 1A [RAPU1A]
RWY 03 DEPARTURES

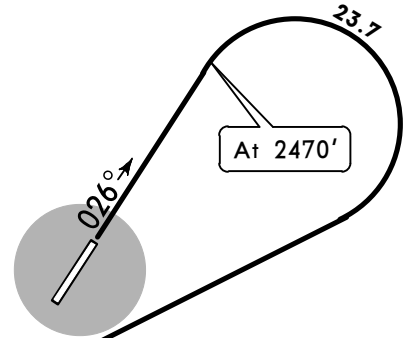


RAPUL
 At or above
8040'

19.3
RAPUL 1A

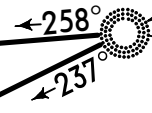
43.4
KOSAK 1A

KOSAK
 At or above
10010'



***1065 HE**

 N46 38.3 E032 28.2
 At or above
4930'



FT/METER CONVERSION	
QNH	
2470'	- 750m
4930'	- 1500m
8040'	- 2450m
10010'	- 3050m

SID	ROUTING
KOSAK 1A	Climb on 026° track to 2470', turn RIGHT to HE NDB, turn LEFT, 237° bearing to KOSAK.
RAPUL 1A	Climb on 026° track to 2470', turn RIGHT to HE NDB, turn RIGHT, 258° bearing to RAPUL.

UKOH/KHE
KHERSON INTL

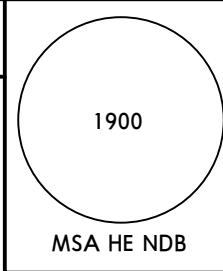
JEPPESEN
 10 AUG 18 **(10-3C)** **Eff 16 Aug**

KHERSON, UKRAINE

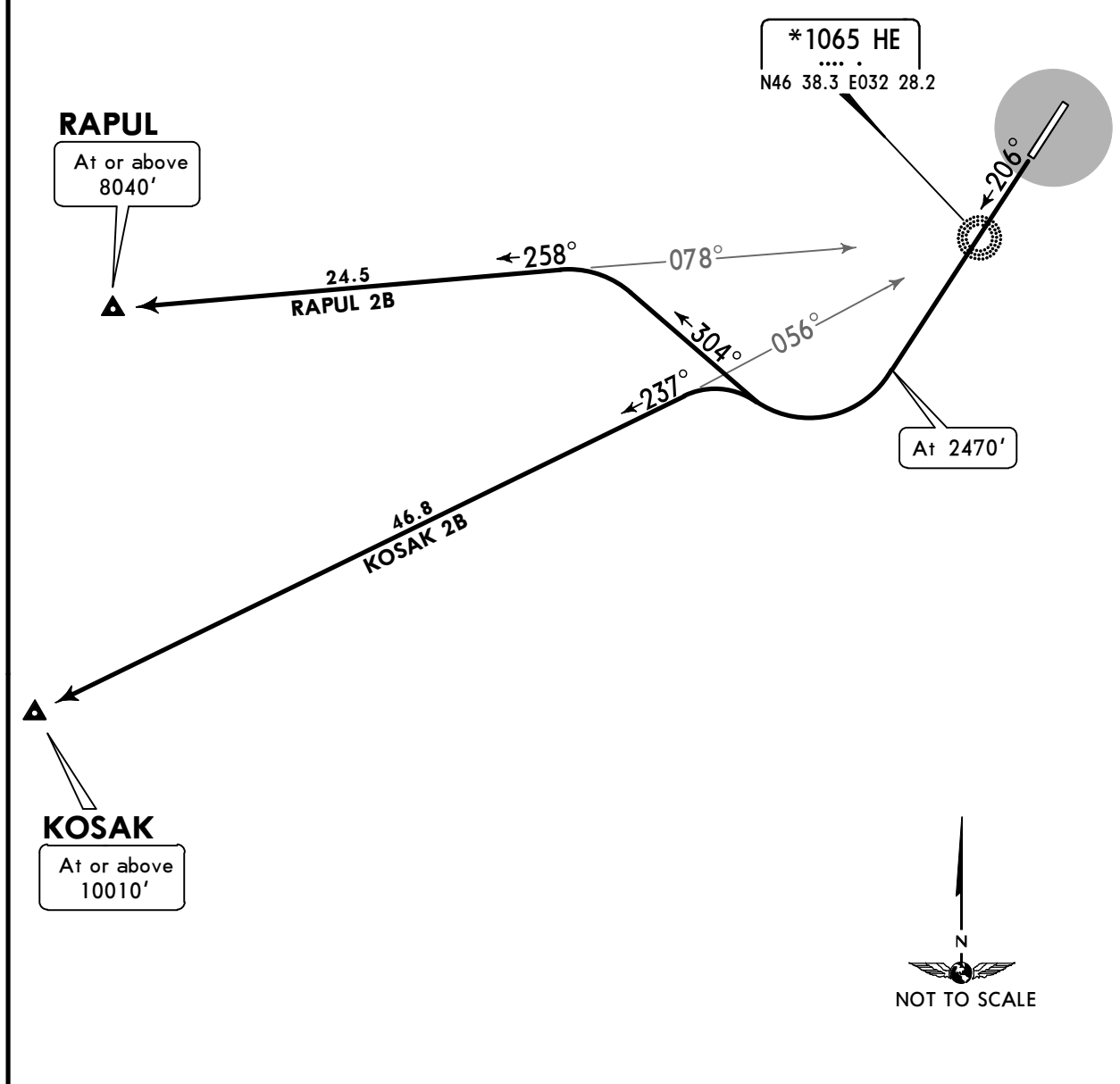
SID

Apt Elev
141'

Trans level: By ATC Trans alt: 10010'
 If unable to comply SID advise ATC.



KOSAK 2B [KOSA2B]
RAPUL 2B [RAPU2B]
RWY 21 DEPARTURES



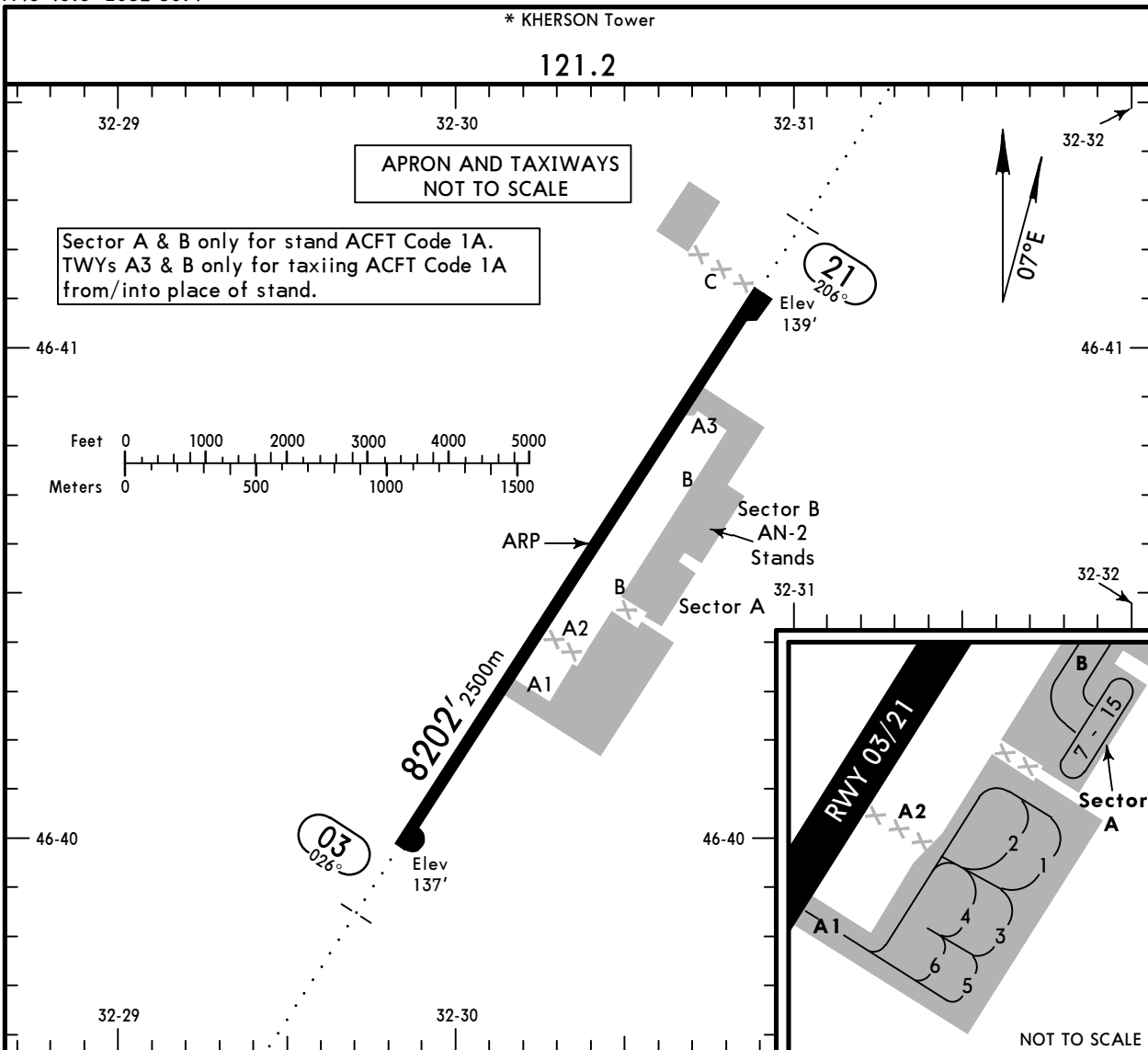
FT/METER CONVERSION	
QNH	
2470'	- 750m
8040'	- 2450m
10010'	- 3050m

SID	ROUTING
KOSAK 2B	Climb on 206° track to 2470', turn RIGHT, intercept 237° bearing from HE NDB to KOSAK.
RAPUL 2B	Climb on 206° track to 2470', turn RIGHT, 304° track, turn LEFT, intercept 258° bearing from HE NDB to RAPUL.

UKOH/KHE
 Apt Elev **141'**
 N46 40.6 E032 30.4

JEPPesen
 10 AUG 18 **(10-9)** Eff 16 Aug

KHERSON, UKRAINE
KHERSON INTL



ADDITIONAL RUNWAY INFORMATION

RWY	LANDING BEYOND	USABLE LENGTHS		
		Threshold	Glide Slope	TAKE-OFF
03 21	RL (60m) ALS PAPI-L (3.00°)		7169' 2185m	1

1 TAKE-OFF RUN AVAILABLE

RWY 03:

From rwy head 8202' (2500m)
 twy A1 int 5577' (1700m)
2 twy A3 int 1640' (500m)

RWY 21:

From rwy head 8202' (2500m)
2 twy A3 int 6562' (2000m)
 twy A1 int 2625' (800m)

2 Only for ACFT Code 1A.

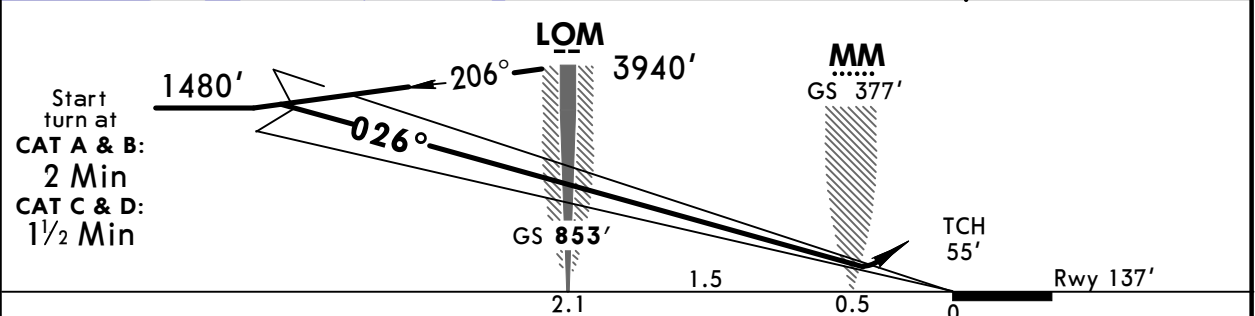
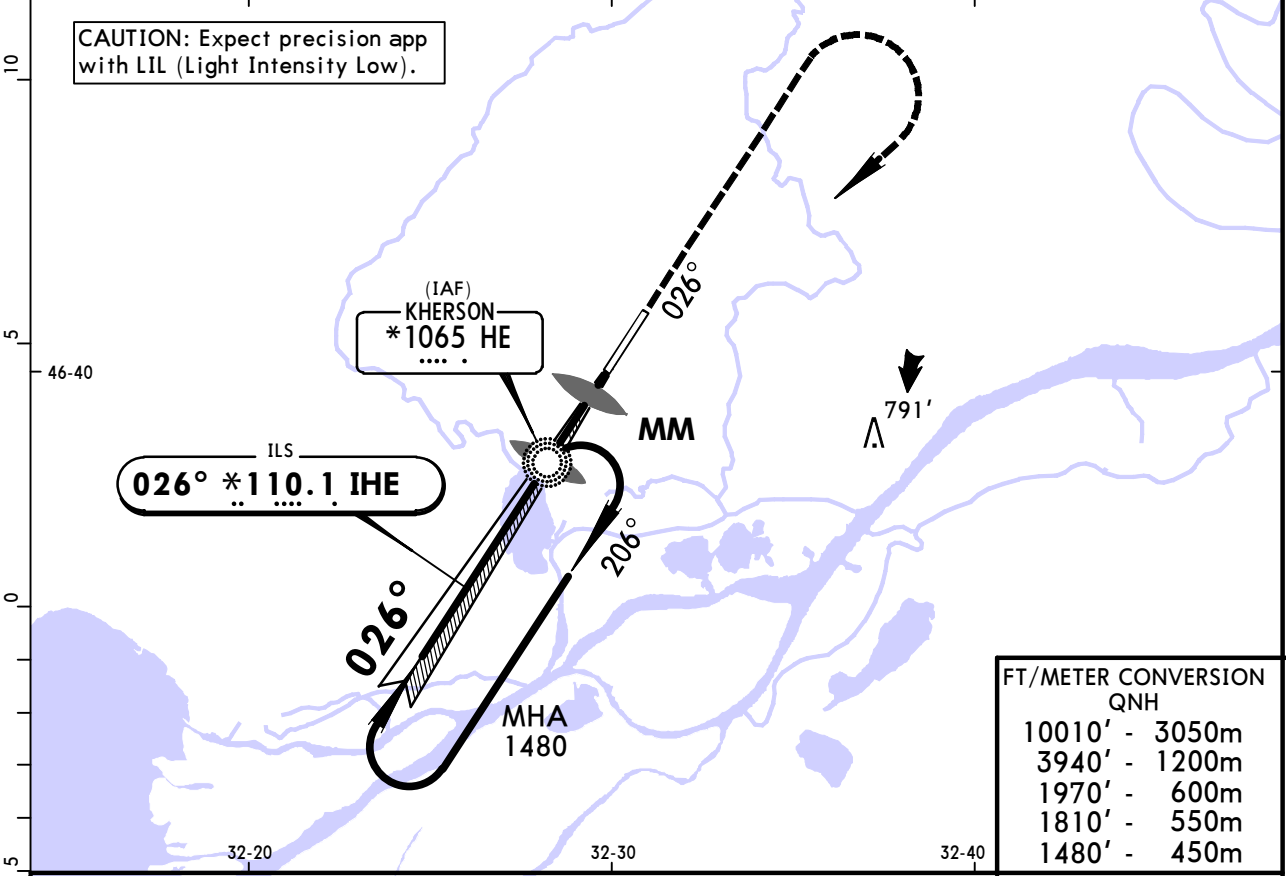
Standard TAKE-OFF		
Low Visibility Take-off		
Day: RL & RCLM Night: RL	Day: RL or RCLM Night: RL	Adequate vis ref (Day only)
A		
B		
C	RVR 300m	400m
D		500m

UKOH/KHE
KHERSON INTL

JEPPESEN
10 AUG 18 **(11-1)** Eff 16 Aug

KHERSON, UKRAINE
ILS Rwy 03

*KHERSON Tower					
121.2					
LOC IHE *110.1	Final Apch Crs 026°	GS LOM 853' (716')	ILS DA(H) Refer to Minimums	Apt Elev 141' Rwy 137'	<div style="border: 1px solid black; border-radius: 50%; width: 100px; height: 100px; margin: 0 auto; display: flex; align-items: center; justify-content: center;">1900</div> <p>MSA HE NDB</p>
MISSED APCH: Climb on 026° to 1810', then turn RIGHT to HE NDB climbing to 1970', then according to chart.					
Alt Set: hPa		Rwy Elev: 5 hPa	Trans level: By ATC	Trans alt: 10010'	
Racetrack restricted to MAX 200 KT.					



Gnd speed-Kts	70	90	100	120	140	160	ALS PAPI	1810' ↑ on 026°
ILS GS	3.00°	372	478	531	637	849		

Standard				STRAIGHT-IN LANDING RWY 03		CIRCLE-TO-LAND 1				
ILS				LOC (GS out)						
DA(H) A: 380' (243') B: 390' (253')		C: 399' (262') D: 409' (272')		NOT AUTHORIZED						
FULL		ALS out								
A	RVR 1000m	RVR 1300m						Max Kts	MDA(H)	VIS
B	RVR 1100m							100	610' (473')	1500m
C	RVR 1100m	135	640' (503')	1600m						
D	RVR 1100m	180	890' (753')	2400m						
		205	1170' (1033')	3600m						

1 Circling height based on rwy 03 thresh elev of 137'.
CHANGES: Procedure. © JEPPESEN, 2015, 2018. ALL RIGHTS RESERVED.

UKOH/KHE
KHERSON INTL

JEPPESSEN
10 AUG 18 **(16-1)** Eff 16 Aug

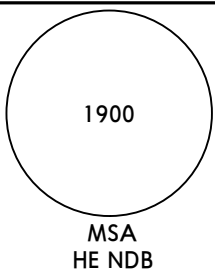
KHERSON, UKRAINE
NDB Rwy 03

*KHERSON Tower

121.2

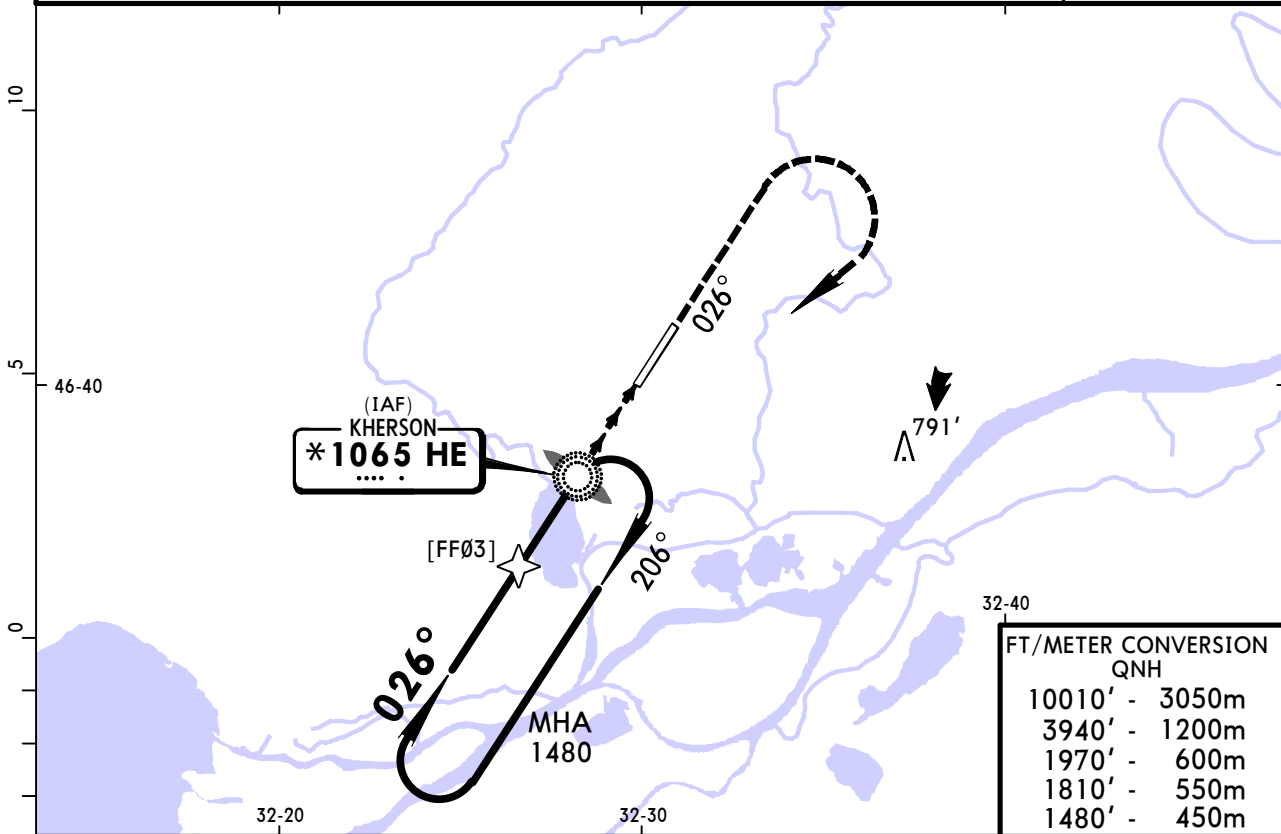
BRIEFING STRIP™

NDB HE *1065	Final Apch Crs 026°	Minimum Alt No FAF	DA/MDA(H) (CONDITIONAL) 560' (423')	Apt Elev 141' Rwy 137'
---------------------------	----------------------------------	-----------------------	--	---------------------------

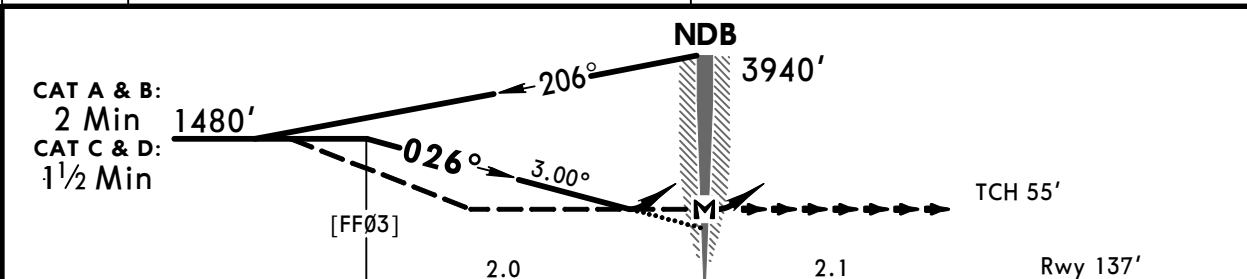


MISSED APCH: Climb on 026° to 1810', then turn RIGHT to NDB climbing to 1970', then according to chart.

Alt Set: hPa Rwy Elev: 5 hPa Trans level: By ATC Trans alt: 10010'
Race track restricted to MAX 200 KT.



DIST to NDB	2.0	1.0
ALTITUDE	1480'	1170'



Gnd speed-Kts	70	90	100	120	140	160	ALS PAPI	1810' ↑ on 026°
Descent Angle 3.00°	372	478	531	637	743	849		

Standard				STRAIGHT-IN LANDING RWY 03				CIRCLE-TO-LAND 1		
CDFA		non-CDFA		CDFA		non-CDFA		Max Kts	MDA(H)	VIS
DA/MDA(H) 560' (423')		MDA(H) 560' (423')		ALS out		ALS out				
A								100	610' (473')	2 1500m
B								135	640' (503')	2 1600m
C	RVR 1800m	RVR 2000m		RVR 2000m	RVR 2200m			180	890' (753')	2400m
D				RVR 2200m	RVR 2400m			205	1170' (1033')	3600m

1 Circling height based on rwy 03 thresh elev of 137'. **2** or higher straight-in minimums.

PANS OPS

UKOH/KHE
KHERSON INTL

JEPPESEN
10 AUG 18 **16-2** **Eff 16 Aug**

KHERSON, UKRAINE
NDB Rwy 21

*KHERSON Tower

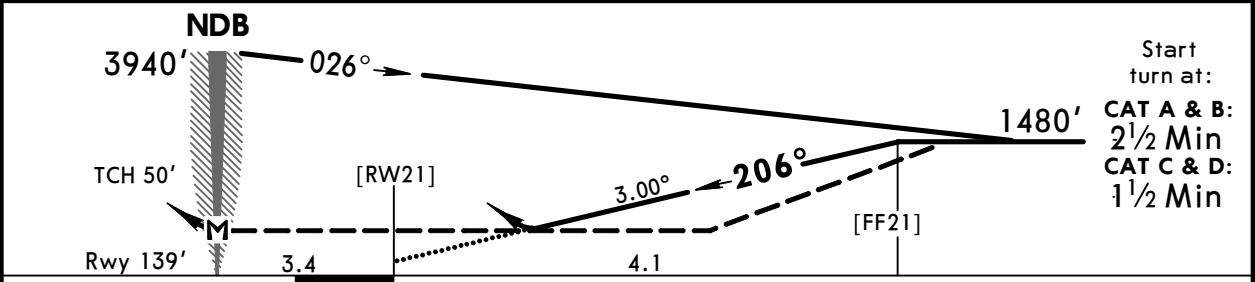
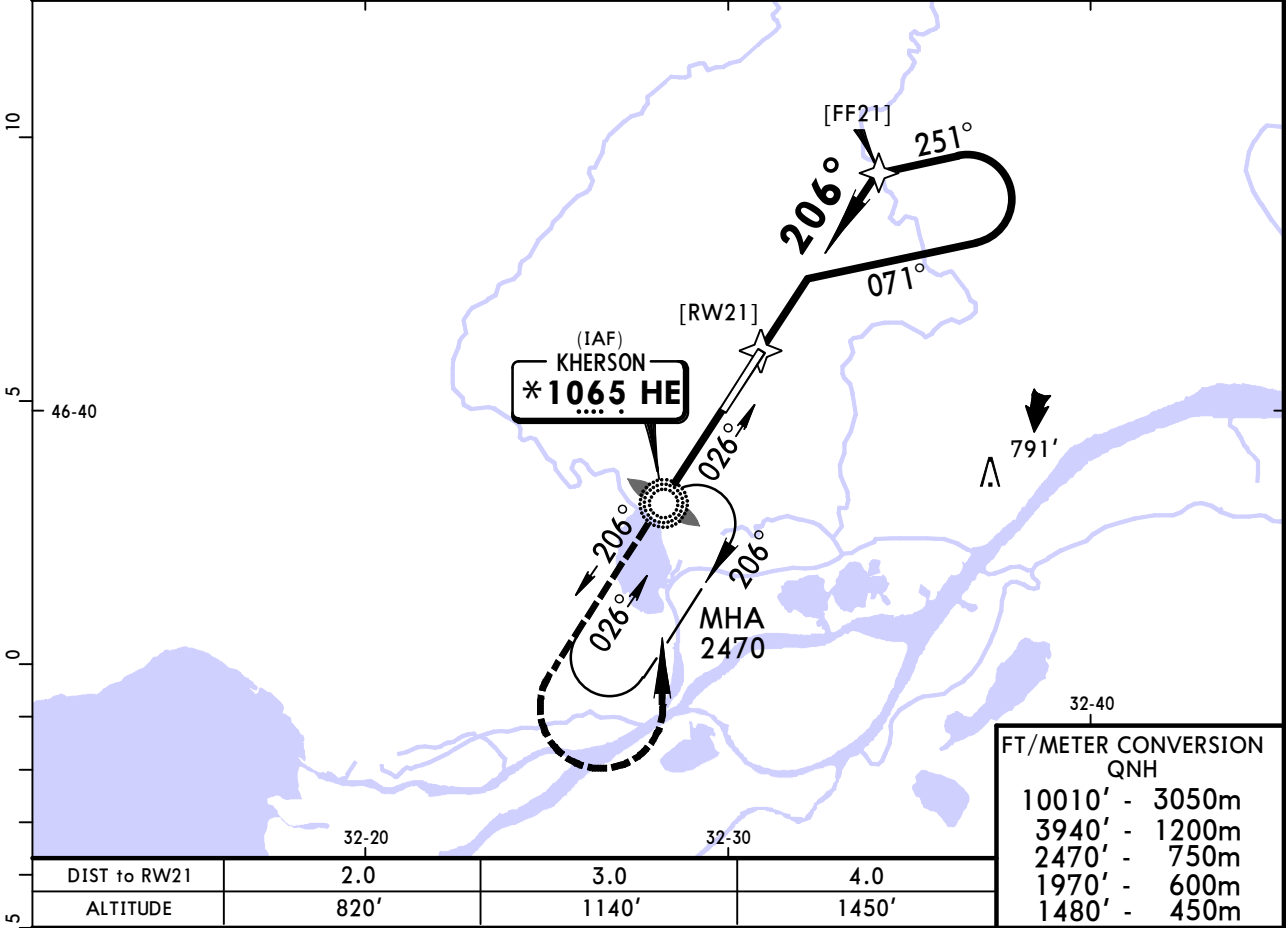
121.2

NDB HE *1065	Final Apch Crs 206°	Minimum Alt No FAF	DA/MDA(H) (CONDITIONAL) 640' (501')	Apt Elev 141' Rwy 139'	<div style="border: 1px solid black; border-radius: 50%; width: 100px; height: 100px; margin: 0 auto; display: flex; align-items: center; justify-content: center;"> 1900 </div> <p style="text-align: center; margin-top: 5px;">MSA HE NDB</p>
---------------------------	----------------------------------	-----------------------	--	---------------------------	---

MISSED APCH: Climb on 206° to 1480', then turn LEFT to HE NDB climbing to 1970', then according to chart.

Alt Set: hPa Rwy Elev: 5 hPa Trans level: By ATC Trans alt: 10010'

Procedure turn restricted to MAX 200 KT.



Gnd speed-Kts	70	90	100	120	140	160	<div style="display: flex; align-items: center; justify-content: center;"> <div style="border: 1px solid black; width: 10px; height: 10px; margin-right: 5px;"></div> ALS </div> <div style="display: flex; align-items: center; justify-content: center; margin-top: 5px;"> <div style="border: 1px solid black; width: 10px; height: 10px; margin-right: 5px;"></div> PAPI </div> <div style="margin-left: 20px; text-align: center;"> 1480' ↑ on 206° </div>
Descent Angle 3.00°	372	478	531	637	743	849	

PANS OPS	Standard				CIRCLE-TO-LAND	
	STRAIGHT-IN LANDING RWY 21					
	CDFA		non-CDFA			
	DA/MDA(H) 640' (501')		MDA(H) 640' (501')			
	ALS out		ALS out		Max Kts	MDA(H) VIS
A	RVR 1500m		RVR 2300m	RVR 2600m	100	640' (501') 2 1500m
B	RVR 1500m		RVR 2300m	RVR 2600m	135	640' (501') 2 1600m
C	RVR 2100m	RVR 2400m	RVR 2500m	RVR 2800m	180	890' (751') 2 2400m
D	RVR 2100m	RVR 2400m	RVR 2500m	RVR 2800m	205	1170' (1031') 3600m

Chart changes since cycle 19-2018

ADD = added chart, REV = revised chart, DEL = deleted chart.

ACT	PROCEDURE IDENT	INDEX	REV DATE	EFF DATE
KHERSON, (KHERSON INTL - UKOH)				

TERMINAL CHART CHANGE NOTICES

No Chart Change Notices for Airport UKOH