

General Information

Location: UZHGOROD UKR
ICAO/IATA: UKLU / UDJ
Lat/Long: N48° 38.07', E022° 15.80'
Elevation: 384 ft

Airport Use: Public
Daylight Savings: Observed
UTC Conversion: -2:00 = UTC
Magnetic Variation: 5.0° E

Fuel Types: Jet A-1
Repair Types: Minor Airframe, Minor Engine
Customs: Yes
Airport Type: IFR
Landing Fee: Yes
Control Tower: Yes
Jet Start Unit: No
LLWS Alert: No
Beacon: No

Sunrise: 0434 Z
Sunset: 1606 Z

Runway Information

Runway: 10
Length x Width: 6686 ft x 131 ft
Surface Type: asphalt
TDZ-Elev: 373 ft
Lighting: Edge

Runway: 28
Length x Width: 6686 ft x 131 ft
Surface Type: asphalt
TDZ-Elev: 378 ft
Lighting: Edge
Displaced Threshold: 2093 ft

Communication Information

Uzhgorod Tower: 134.500
Uzhgorod Radar Approach: 121.900

UKLU/UDJ
UZHHOROD

JEPPESEN
27 JAN 17 10-2 Eff 2 Feb

UZHHOROD, UKRAINE
STAR

UZHHOROD Approach 121.9	Apt Elev 384'	Alt Set: hPa (MM on request) Trans level: By ATC Trans alt: 10010' 1. ACFT flying IFR and intending to land at aerodrome Uzhhorod should file a flight plan with information concerning Ukrainian cross-border over LASOT and change from IFR to VFR before/over SR and established VFR route in field 15. 2. Not later than 2 minutes before crossing Ukrainian-Slovak border over LASOT report ACFT position to ATC.
UZHHOROD Tower *134.5		

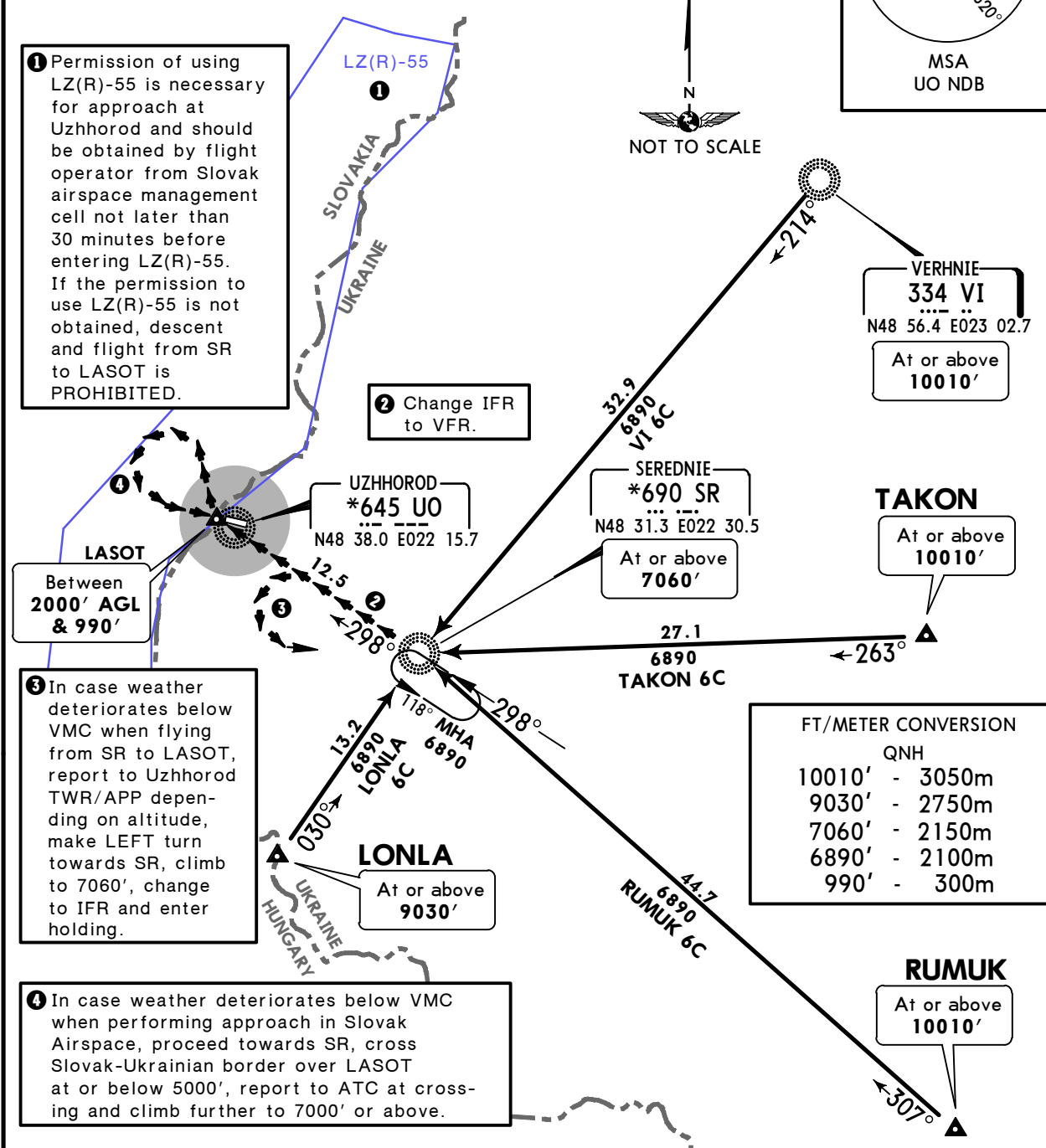
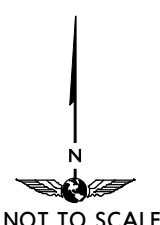
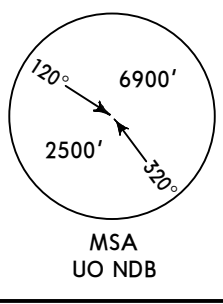
LONLA 6C, RUMUK 6C
TAKON 6C, VERHNIE 6C (VI 6C)
RWY 10 ARRIVALS

1 Permission of using LZ(R)-55 is necessary for approach at Uzhhorod and should be obtained by flight operator from Slovak airspace management cell not later than 30 minutes before entering LZ(R)-55. If the permission to use LZ(R)-55 is not obtained, descent and flight from SR to LASOT is PROHIBITED.

2 Change IFR to VFR.

3 In case weather deteriorates below VMC when flying from SR to LASOT, report to Uzhhorod TWR/APP depending on altitude, make LEFT turn towards SR, climb to 7060', change to IFR and enter holding.

4 In case weather deteriorates below VMC when performing approach in Slovak Airspace, proceed towards SR, cross Slovak-Ukrainian border over LASOT at or below 5000', report to ATC at crossing and climb further to 7000' or above.



FT/METER CONVERSION
QNH

10010'	-	3050m
9030'	-	2750m
7060'	-	2150m
6890'	-	2100m
990'	-	300m

STAR	ROUTING
LONLA 6C	On 030° bearing to SR, change to VFR and descend towards LASOT if weather conditions permit.
RUMUK 6C	On 307° bearing to SR, change to VFR and descend towards LASOT if weather conditions permit.
TAKON 6C	On 263° bearing to SR, change to VFR and descend towards LASOT if weather conditions permit.
VI 6C	On 214° bearing to SR, change to VFR and descend towards LASOT if weather conditions permit.
APPROACH	
Pass LASOT at or below 2000' AGL, enter LZ(R)-55, make an approach to RWY 10 and land.	
MISSED APPROACH	
Report to ATC and make a RIGHT-hand pattern for another approach.	

UKLU/UDJ
UZHGOROD

JEPPESEN
 27 JAN 17 **(10-2A)** **Eff 2 Feb**

UZHGOROD, UKRAINE

ARRIVAL

UZHGOROD Approach 121.9	UZHGOROD Tower 134.5	Apt Elev 384'	Alt Set: hPa (MM on request) Trans level: By ATC Trans alt: 10010'
--------------------------------------	-----------------------------------	-------------------------	---

RWY 28 ARRIVALS

Landing on RWY 28 is allowed only to ACFT able to remain in Ukrainian airspace in case of missed approach. LEFT-hand pattern should be applied in this case.

When landing on RWY 28 request to use LZ(R)-55 not needed.

ACFT flying IFR, should arrive to SR between 7000' and 8000', change to VFR and descend toward Uzhgorod if the weather conditions permit.

If the weather conditions deteriorate below VMC when flying from SR to UKLU, report to ATC, make a LEFT-hand turn towards SR and climb to at or above 7000'.

UKLU/UDJ
UZHHOROD

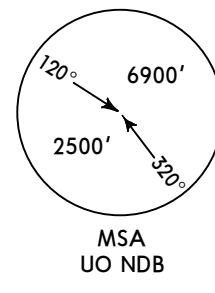
JEPPESEN
27 JAN 17 10-3 Eff 2 Feb

UZHHOROD, UKRAINE

SID

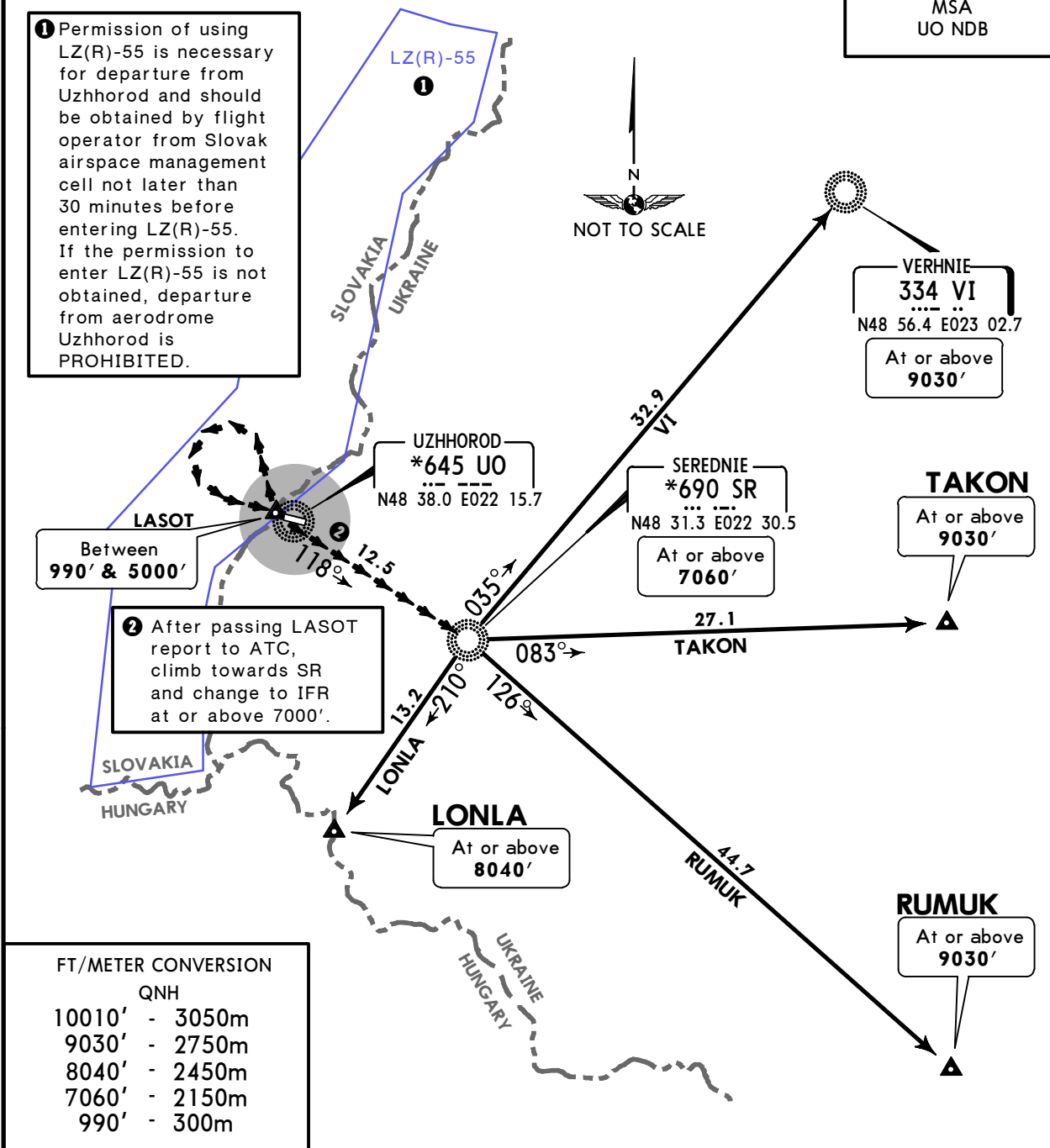
UZHHOROD Approach 121.9	UZHHOROD Tower *134.5	Apt Elev 384'	Trans level: By ATC Trans alt: 10010' 1. ACFT departing from aerodrome Uzhhorod and going to continue IFR should file a flight plan with information concerning established VFR route, Ukrainian-Slovak cross-border over LASOT and change from VFR to IFR before/over SR in field 15. 2. RWY 10 is not available for departure.
-------------------------------	-----------------------------	------------------	--

LONLA, RUMUK
TAKON, VI
RWY 28 DEPARTURES



① Permission of using LZ(R)-55 is necessary for departure from Uzhhorod and should be obtained by flight operator from Slovak airspace management cell not later than 30 minutes before entering LZ(R)-55. If the permission to enter LZ(R)-55 is not obtained, departure from aerodrome Uzhhorod is PROHIBITED.

② After passing LASOT report to ATC, climb towards SR and change to IFR at or above 7000'.



FT/METER CONVERSION	
QNH	
10010'	- 3050m
9030'	- 2750m
8040'	- 2450m
7060'	- 2150m
990'	- 300m

SID	ROUTING
LONLA	After departure complete a turn in Slovak airspace back to LASOT, proceed to SR by VFR, before/over SR change to IFR, 210° bearing from SR to LONLA.
RUMUK	After departure complete a turn in Slovak airspace back to LASOT, proceed to SR by VFR, before/over SR change to IFR, 126° bearing from SR to RUMUK.
TAKON	After departure complete a turn in Slovak airspace back to LASOT, proceed to SR by VFR, before/over SR change to IFR, 083° bearing from SR to TAKON.
VI	After departure complete a turn in Slovak airspace back to LASOT, proceed to SR by VFR, before/over SR change to IFR, 035° bearing from SR to VI.

Chart changes since cycle 18-2017

ADD = added chart, REV = revised chart, DEL = deleted chart.

ACT	PROCEDURE IDENT	INDEX	REV DATE	EFF DATE
-----	-----------------	-------	----------	----------

UZHGOROD, (UZHGOROD - UKLU)

TERMINAL CHART CHANGE NOTICES

Chart Change Notices for Airport UKLU

Type: Terminal

Effectivity: Temporary

Begin Date: 20160617

End Date: Until Further Notice

(10-1R) Radar Minimum Altitude Chart suspended.

Type: Terminal

Effectivity: Temporary

Begin Date: 20160701

End Date: Until Further Notice

(10-2/2A. 10-3/3A) SIDs/STARs suspended. For valid SID/STARs refer to temp charts 10-2B/2C, 10-3B/BLK and latest NOTAMs.