

List of pages in this Trip Kit

Trip Kit Index

Airport Information For UKLR

Terminal Charts For UKLR

Revision Letter For Cycle 24-2018

Change Notices

Notebook

General Information

Location: RIVNE UKR
ICAO/IATA: UKLR / RWN
Lat/Long: N50° 36.5', E026° 08.4'
Elevation: 755 ft

Airport Use: Public
Daylight Savings: Observed
UTC Conversion: -2:00 = UTC
Magnetic Variation: 6.0° E

Fuel Types: Jet A-1
Customs: Yes
Airport Type: IFR
Landing Fee: Yes
Control Tower: Yes
Jet Start Unit: No
LLWS Alert: No
Beacon: No

Sunrise: 0615 Z
Sunset: 1413 Z

Runway Information

Runway: 11
Length x Width: 8615 ft x 138 ft
Surface Type: concrete
TDZ-Elev: 748 ft
Lighting: Edge, ALS

Runway: 29
Length x Width: 8615 ft x 138 ft
Surface Type: concrete
TDZ-Elev: 751 ft
Lighting: Edge, ALS

Communication Information

Rivne Tower: 123.700
Lviv Information: 126.825 Flight Info Service RCO

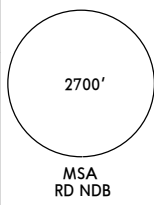
UKLR/RWN
RIVNE

JEPPESEN
27 JAN 17 (10-2) Eff 2 Feb

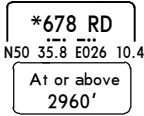
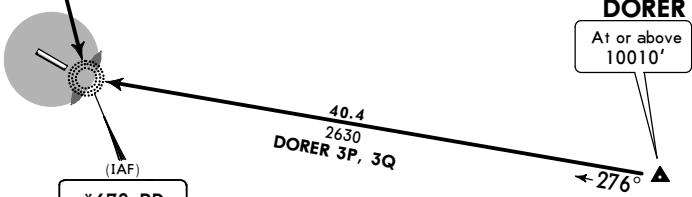
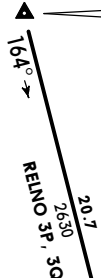
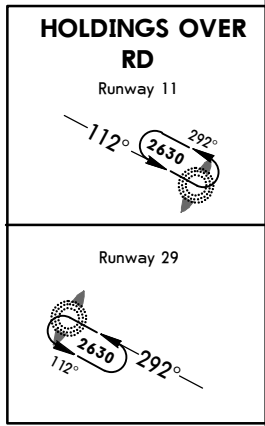
RIVNE, UKRAINE
STAR

Apt Elev
755'

Alt Set: hPa
Trans level: By ATC Trans alt: 10010'



DORER 3P [DORE3P]
DORER 3Q [DORE3Q]
RELNO 3P [RELN3P]
RELNO 3Q [RELN3Q]
ARRIVALS



FT/METER CONVERSION

QNH	
10010'	- 3050m
9030'	- 2750m
2960'	- 900m
2630'	- 800m

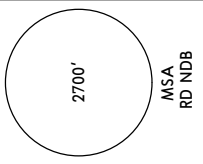
STAR	RWY	ROUTING
DORER 3P	11	On 276° bearing to RD.
DORER 3Q	29	On 276° bearing to RD.
RELNO 3P	11	On 164° bearing to RD.
RELNO 3Q	29	On 164° bearing to RD.

UKLR/RWN
RIVNE

JEPPESEN
27 JAN 17 (10-2A) Eff 2 Feb

RIVNE, UKRAINE
STAR

Apt Elev 755' Alt Set: hPa Trans level: By ATC Trans alt: 10010'



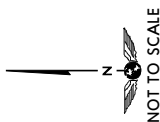
GIDNO 3P [GIDN3P]
GIDNO 3Q [GIDN3Q]
VABOD 3P [VABO3P]
VABOD 3Q [VABO3Q]
ARRIVALS

(IAF)
*678 RD
N50 35.8 E026 10.4
At or above
2960'

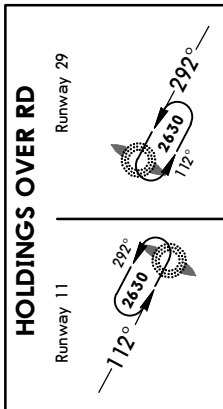
53.5
2630
VABOD 3P, 3Q

400
0.92
0362
G3, P3 OND C

GIDNO
At or above
9030'



▲ 094°
VABOD
At or above
9030'



FT./METER CONVERSION

QNH

10010' - 3050m
9030' - 2750m
2960' - 900m
2630' - 800m

STAR	RWY	ROUTING
GIDNO 3P	11	On 004° bearing to RD.
GIDNO 3Q	29	On 004° bearing to RD.
VABOD 3P	11	On 094° bearing to RD.
VABOD 3Q	29	On 094° bearing to RD.

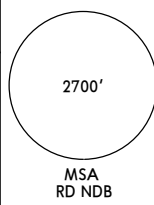
UKLR/RWN
RIVNE

JEPPESEN
27 JAN 17 (10-3) Eff 2 Feb

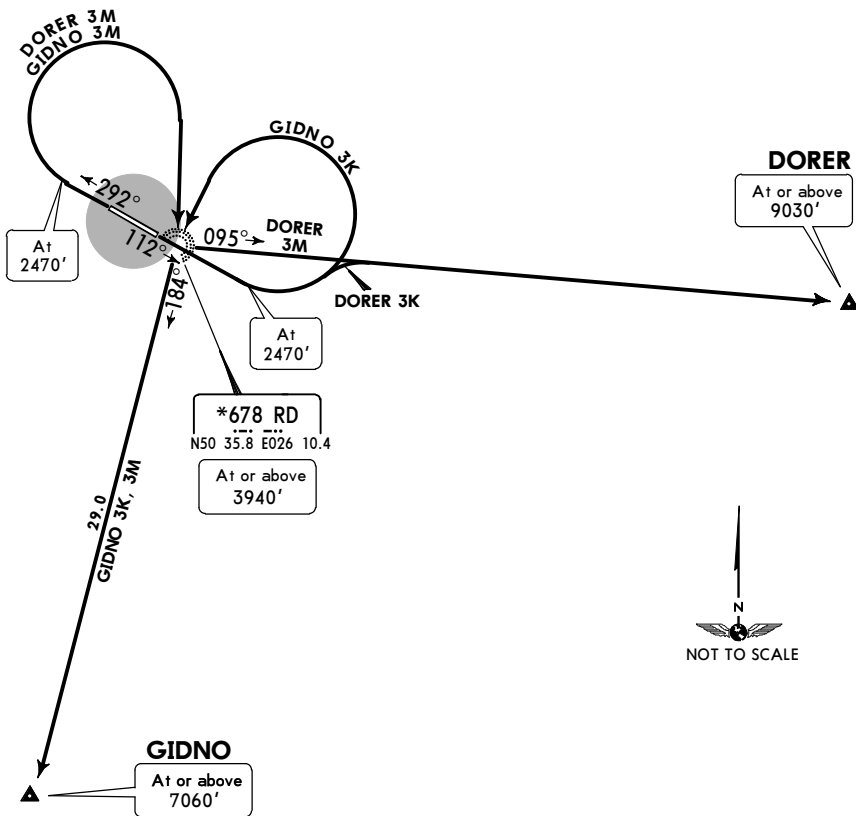
RIVNE, UKRAINE
SID

Apt Elev
755'

Trans level: By ATC Trans alt: 10010'
RWY 11: EXPECT close-in obstacles.



DORER 3K [DORE3K]
DORER 3M [DORE3M]
GIDNO 3K [GIDN3K]
GIDNO 3M [GIDN3M]
DEPARTURES



FT/METER CONVERSION

QNH	
2470'	- 750m
3940'	- 1200m
7060'	- 2150m
9030'	- 2750m
10010'	- 3050m

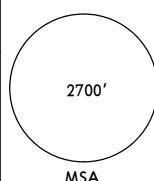
SID	RWY	ROUTING
DORER 3K	11	Climb on 112° track to 2470', turn LEFT, intercept 095° bearing from RD to DORER.
DORER 3M	29	Climb on 292° track to 2470', turn RIGHT to RD, turn LEFT, intercept 095° bearing from RD to DORER.
GIDNO 3K	11	Climb on 112° track to 2470', turn LEFT to RD, turn LEFT, 184° track to GIDNO.
GIDNO 3M	29	Climb on 292° track to 2470', turn RIGHT to RD, turn RIGHT, 184° track to GIDNO.

CHANGES: Chart reindexed; tempo stamp removed.

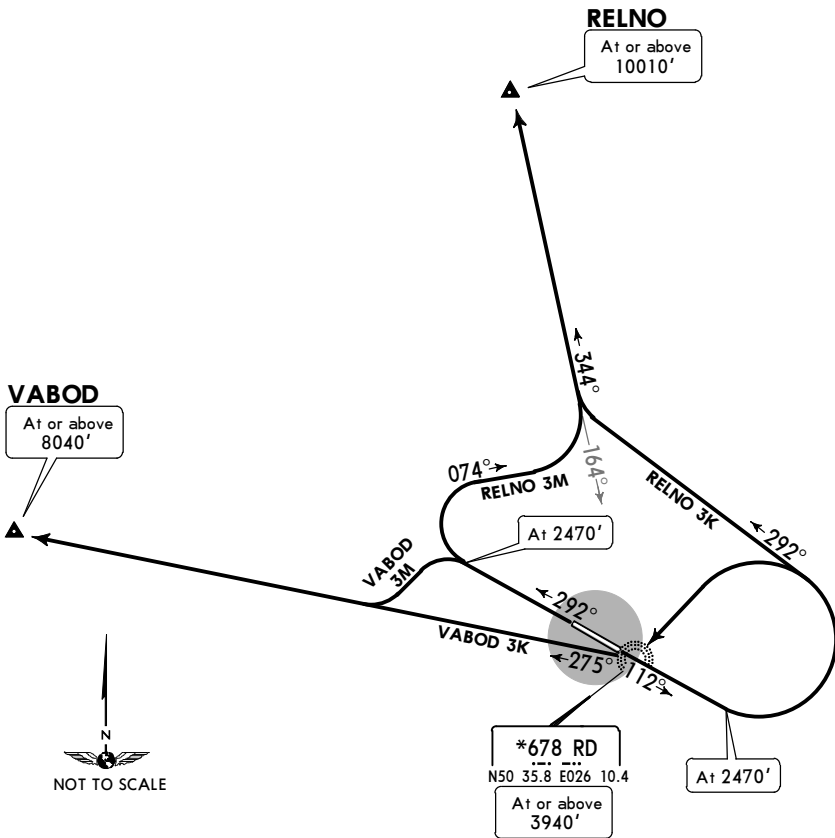
UKLR/RWN
RIVNE

JEPPESEN
27 JAN 17 (10-3A) Eff 2 Feb

RIVNE, UKRAINE
SID

Apt Elev 755'	Trans level: By ATC Trans alt: 10010' RWY 11: EXPECT close-in obstacles.	 2700' MSA RD NDB
-------------------------	---	---

RELNO 3K [RELN3K]
RELNO 3M [RELN3M]
VABOD 3K [VABO3K]
VABOD 3M [VABO3M]
DEPARTURES



FT/METER CONVERSION	
QNH	
2470'	- 750m
3940'	- 1200m
8040'	- 2450m
10010'	- 3050m

SID	RWY	ROUTING
RELNO 3K	11	Climb on 112° track to 2470', turn LEFT, 292° track, turn RIGHT, intercept 344° bearing from RD to RELNO.
RELNO 3M	29	Climb on 292° track to 2470', turn RIGHT, 074° track, turn LEFT, intercept 344° bearing from RD to RELNO.
VABOD 3K	11	Climb on 112° track to 2470', turn LEFT to RD, turn RIGHT, 275° track to VABOD.
VABOD 3M	29	Climb on 292° track to 2470', turn LEFT, intercept 275° bearing from RD to VABOD.

UKLR/RWN

Apt Elev **755'**
 N50 36.5 E026 08.4

JEPPESEN

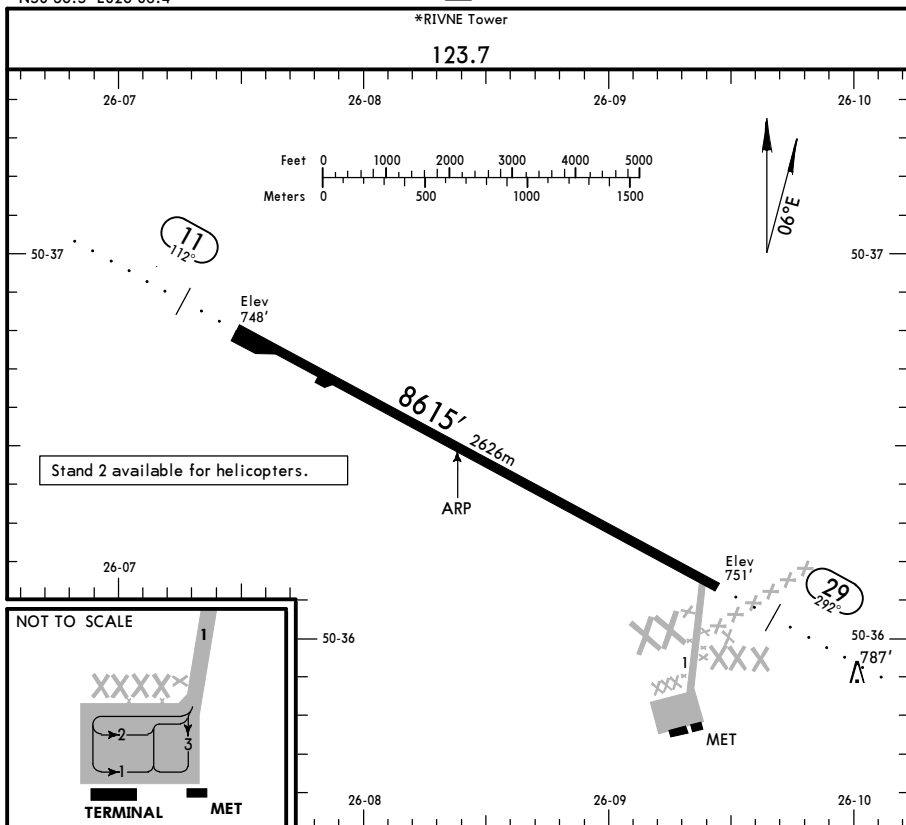
16 FEB 18

(10-9)

Eff 1 Mar

RIVNE, UKRAINE

RIVNE



ADDITIONAL RUNWAY INFORMATION

RWY	ALS	PAPI-L (angle)	RVR	USABLE LENGTHS		TAKE-OFF	WIDTH
				Threshold	Glide Slope		
11	RL (60m)	PAPI-L (angle 2.40°)	RVR	①		8123' 2476m	138'
29	RL (60m)	PAPI-L (angle 3.00°)	RVR				42m

① LDA 8123' (2476m)

Standard

TAKE-OFF

	Low Visibility Take-off	Day: RL or RCLM Night: RL	Adequate vis ref (Day only)
A			
B			
C	RVR 300m	400m	500m
D			

(CIO) Close-in obstacle: 787' petrol station 0.4NM (809m) in front of THR Rwy 29.

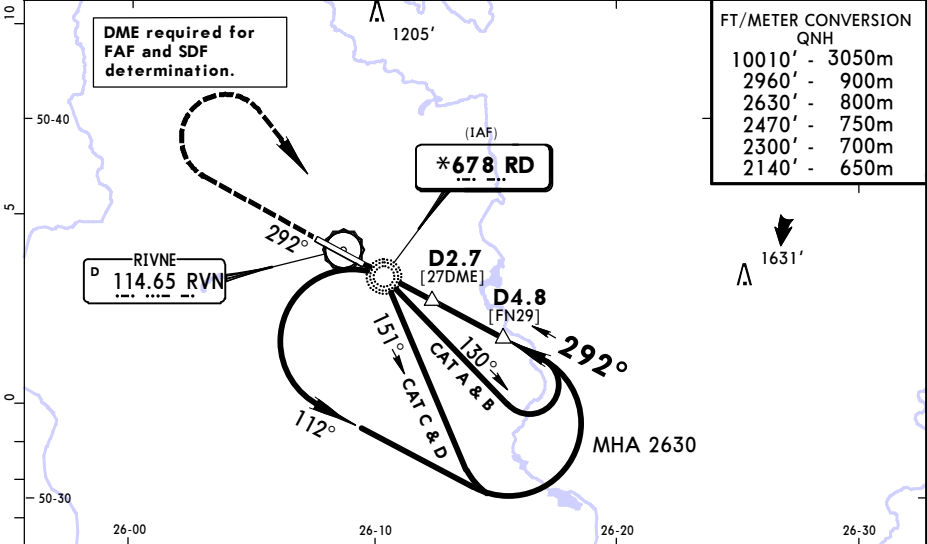
UKLR/RWN
RIVNE

JEPPESEN
4 AUG 17 **(16-2)** Eff 17 Aug

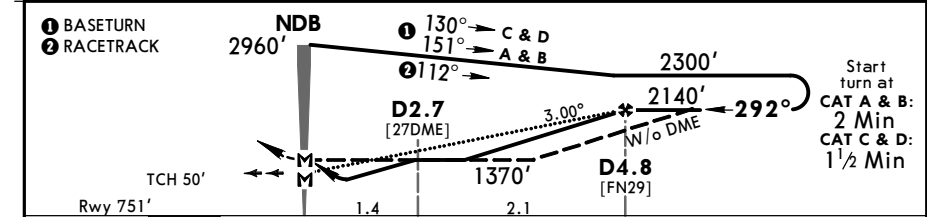
RIVNE, UKRAINE
NDB Rwy 29

*RIVNE Tower					2700'
123.7					
NDB RD *678	Final Apch Crs 292°	With DME Minimum Alt D4.8 2140' (1389')	With DME DA/MDA(H) 1120' (369')	Apt Elev 755'	
		W/o DME Minimum Alt No FAF	W/o DME MDA(H) 1370' (619')	Rwy 751'	
MISSED APCH: Climb on 292° to 2470', then turn RIGHT to RD NDB climbing to 2960', then according to chart.					MSA RD NDB

Alt Set: hPa Rwy Elev: 27 hPa Trans level: By ATC Trans alt: 10010'



DIST to NDB	1.0	2.0	3.0
ALTITUDE	1350'	1670'	1990'



Gnd speed-Kts	70	90	100	120	140	160	ALS PAPI	2470'	292°	2960'	RD 678
Descent Angle	3.00°	372	478	531	637	743		849			

Standard				STRAIGHT-IN LANDING RWY 29		CIRCLE-TO-LAND	
with DME CDFA DA/MDA(H) 1120' (369')		w/o DME non-CDFA MDA(H) 1370' (619')		ALS out		ALS out	
A				Max Kts	MDA(H)	VIS	
B	RVR 1500m	RVR 2800m	RVR 3000m	100	1370' (615')	1	1500m
C	RVR 1500m	RVR 3000m	RVR 3200m	135	1370' (615')	1	1600m
D	RVR 1700m	RVR 3000m	RVR 3200m	180	1360' (605')	1	2400m
				205	1460' (705')		3600m



JeppView for Windows

Chart changes since cycle 23-2018

ADD = added chart, REV = revised chart, DEL = deleted chart.

ACT	PROCEDURE IDENT	INDEX	REV DATE	EFF DATE
-----	-----------------	-------	----------	----------

RIVNE, (RIVNE INTL - UKLR)

TERMINAL CHART CHANGE NOTICES

Chart Change Notices for Airport UKLR

Type: Terminal

Effectivity: Permanent

Begin Date: 20181108

End Date: No end date

Airport name changed from Rivne to Rivne Intl.