

General Information

Location: CHERNIVTSI UKR
ICAO/IATA: UKLN / CWC
Lat/Long: N48° 15.57', E025° 58.80'
Elevation: 826 ft

Airport Use: Public
Daylight Savings: Observed
UTC Conversion: -2:00 = UTC
Magnetic Variation: 5.0° E

Fuel Types: Jet A-1
Customs: Yes
Airport Type: IFR
Landing Fee: Yes
Control Tower: Yes
Jet Start Unit: No
LLWS Alert: No
Beacon: No

Sunrise: 0518 Z
Sunset: 1443 Z

Runway Information

Runway: 15
Length x Width: 7270 ft x 138 ft
Surface Type: asphalt
TDZ-Elev: 801 ft
Lighting: Edge, ALS

Runway: 33
Length x Width: 7270 ft x 138 ft
Surface Type: asphalt
TDZ-Elev: 826 ft
Lighting: Edge, ALS

Communication Information

Chernivtsi Tower: 121.300
Lviv Information: 130.700 Flight Info Service

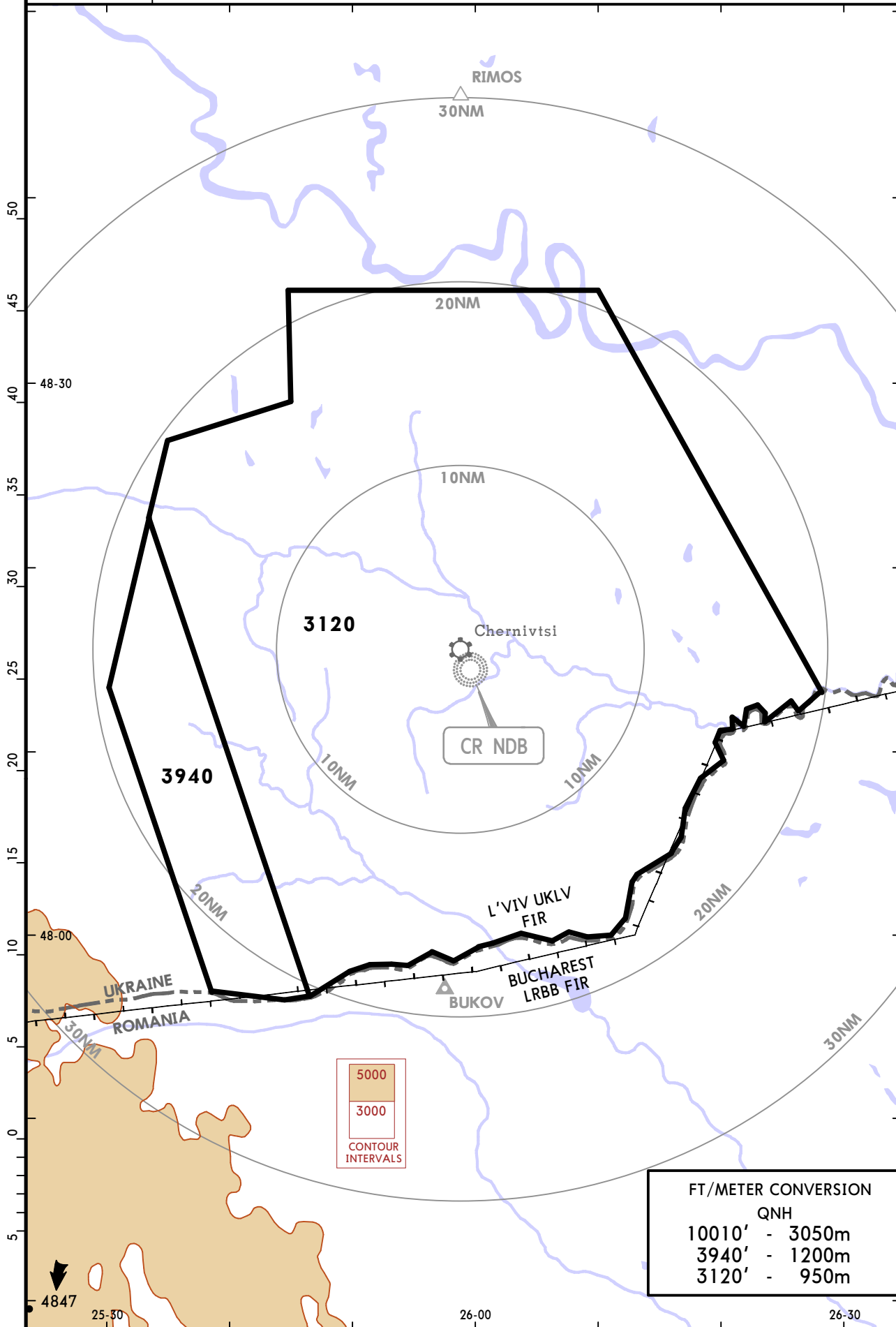
UKLN/CWC CHERNIVTSI

JEPPESEN
14 APR 17
Eff 27 Apr (10-1R)

CHERNIVTSI, UKRAINE RADAR MINIMUM ALTITUDES

Apt Elev
826'

Alt Set: hPa (MM on request)
Trans level: By ATC Trans alt: 10010'
1. This chart may only be used for cross-checking of altitudes assigned while the aircraft identified.
2. MRVA are safe if the temperature at the surface is +13°C or above. For lower temperatures, corrected minimum levels will be provided by ATS.



CHANGES: New chart.

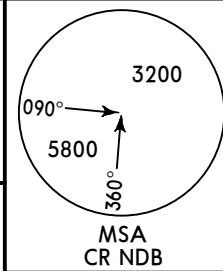
© JEPPESEN, 2017. ALL RIGHTS RESERVED.

UKLN/CWC
CHERNIVTSI

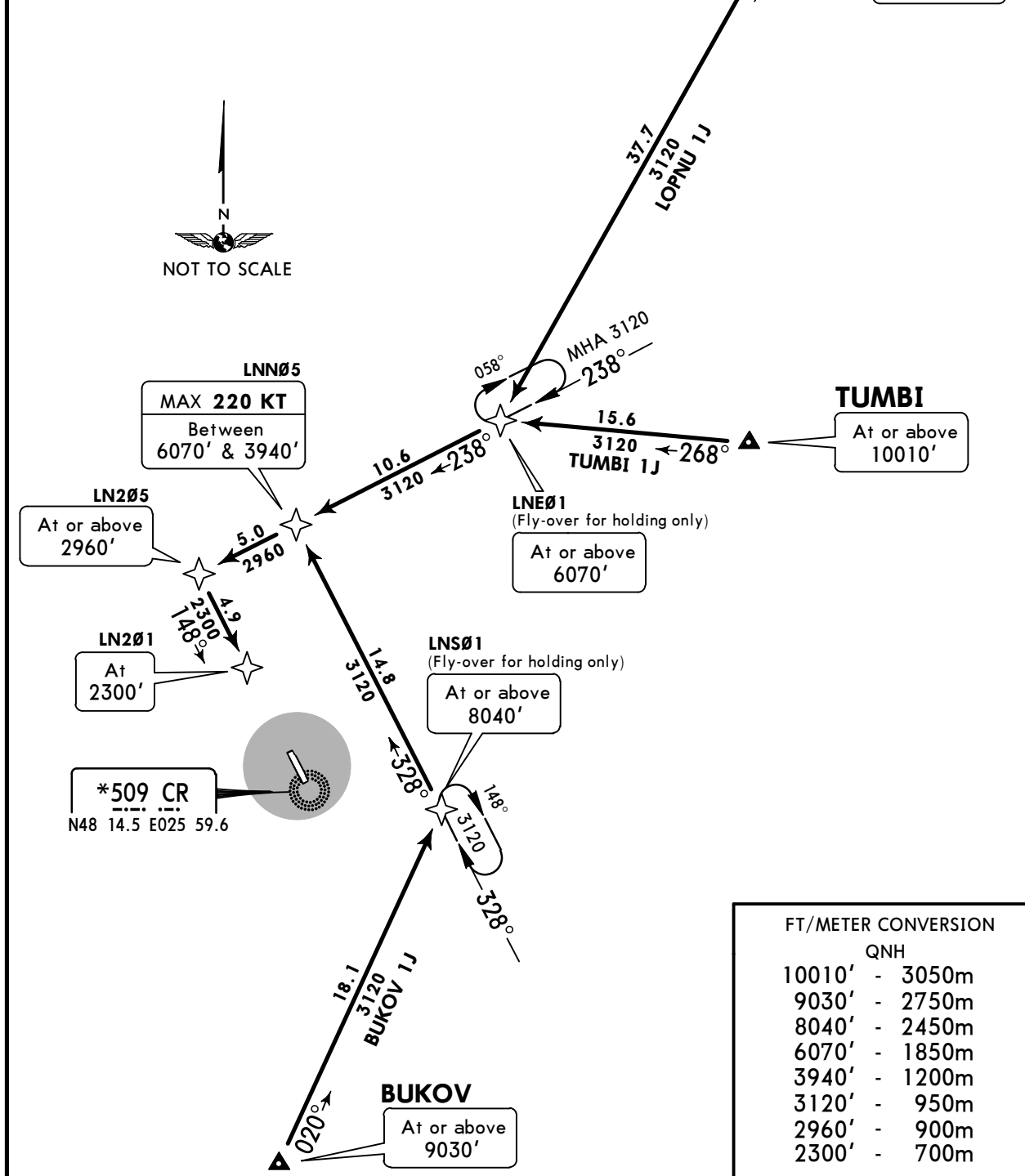
JEPPESEN
8 SEP 17 **10-2** **Eff 14 Sep**

CHERNIVTSI, UKRAINE
RNAV TRANSITION

Apt Elev **826'**
Alt Set: hPa
Trans level: By ATC Trans alt: 10010'
1. RNAV 1 (GNSS).
2. RNAV 1 (P-RNAV) approval required otherwise advise ATC.
3. Speed restrictions are always mandatory unless cancelled by ATC.
4. EXPECT ILS approach on LN201.



**BUKOV 1J [BUK01J], LOPNU 1J [LOPN1J]
TUMBI 1J [TUMB1J]
RWY 15 RNAV TRANSITIONS
BY ATC**



FT/METER CONVERSION	
QNH	
10010'	3050m
9030'	2750m
8040'	2450m
6070'	1850m
3940'	1200m
3120'	950m
2960'	900m
2300'	700m

TRANSITION	ROUTING
BUKOV 1J	BUKOV (9030'+) - LNS01 (8040'+) - LNN05 (K220-; 6070'-; 3940'+) - LN205 (2960'+) - LN201 (2300').
LOPNU 1J	LOPNU (10010'+) - LNE01 (6070'+) - LNN05 (K220-; 6070'-; 3940'+) - LN205 (2960'+) - LN201 (2300').
TUMBI 1J	TUMBI (10010'+) - LNE01 (6070'+) - LNN05 (K220-; 6070'-; 3940'+) - LN205 (2960'+) - LN201 (2300').

UKLN/CWC
CHERNIVTSI

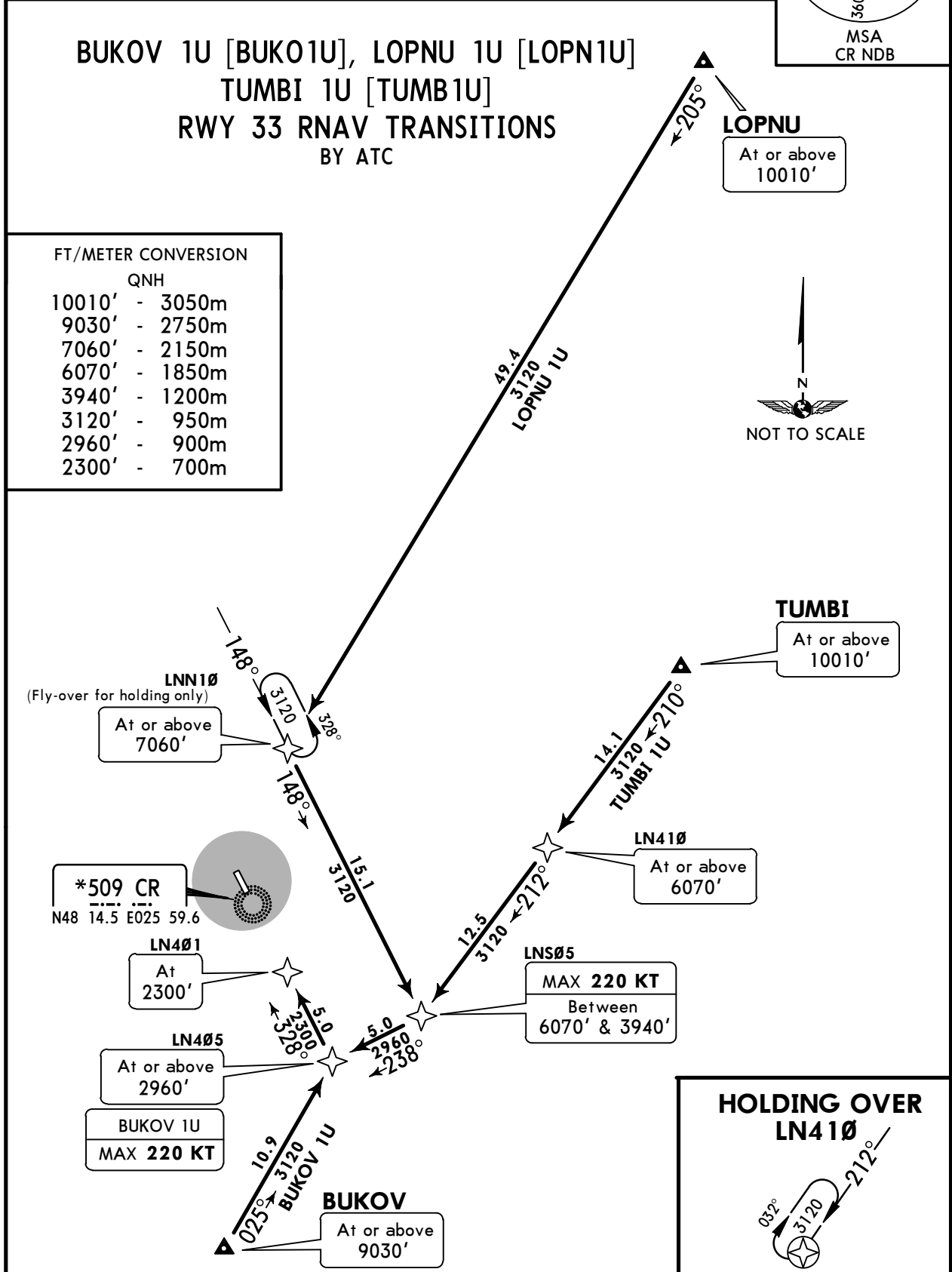
JEPPESEN
8 SEP 17 **(10-2A)** Eff 14 Sep

CHERNIVTSI, UKRAINE
RNAV TRANSITION

Apt Elev 826'	Alt Set: hPa Trans level: By ATC Trans alt: 10010' 1. RNAV 1 (GNSS). 2. RNAV 1 (P-RNAV) approval required otherwise advise ATC. 3. Speed restrictions are always mandatory unless cancelled by ATC. 4. EXPECT ILS approach on LN401.	<p>MSA CR NDB</p>
-------------------------	---	-----------------------

**BUKOV 1U [BUK01U], LOPNU 1U [LOPN1U]
TUMBI 1U [TUMB1U]
RWY 33 RNAV TRANSITIONS
BY ATC**

FT/METER CONVERSION	
QNH	
10010'	- 3050m
9030'	- 2750m
7060'	- 2150m
6070'	- 1850m
3940'	- 1200m
3120'	- 950m
2960'	- 900m
2300'	- 700m



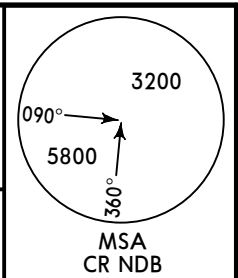
TRANSITION	ROUTING
BUKOV 1U	BUKOV (9030'+) - LN405 (K220-; 2960'+) - LN401 (2300').
LOPNU 1U	LOPNU (10010'+) - LNN10 (7060'+) - LNS05 (K220-; 6070'-; 3940'+) - LN405 (2960'+) - LN401 (2300').
TUMBI 1U	TUMBI (10010'+) - LN410 (6070'+) - LNS05 (K220-; 6070'-; 3940'+) - LN405 (2960'+) - LN401 (2300').

UKLN/CWC
CHERNIVTSI

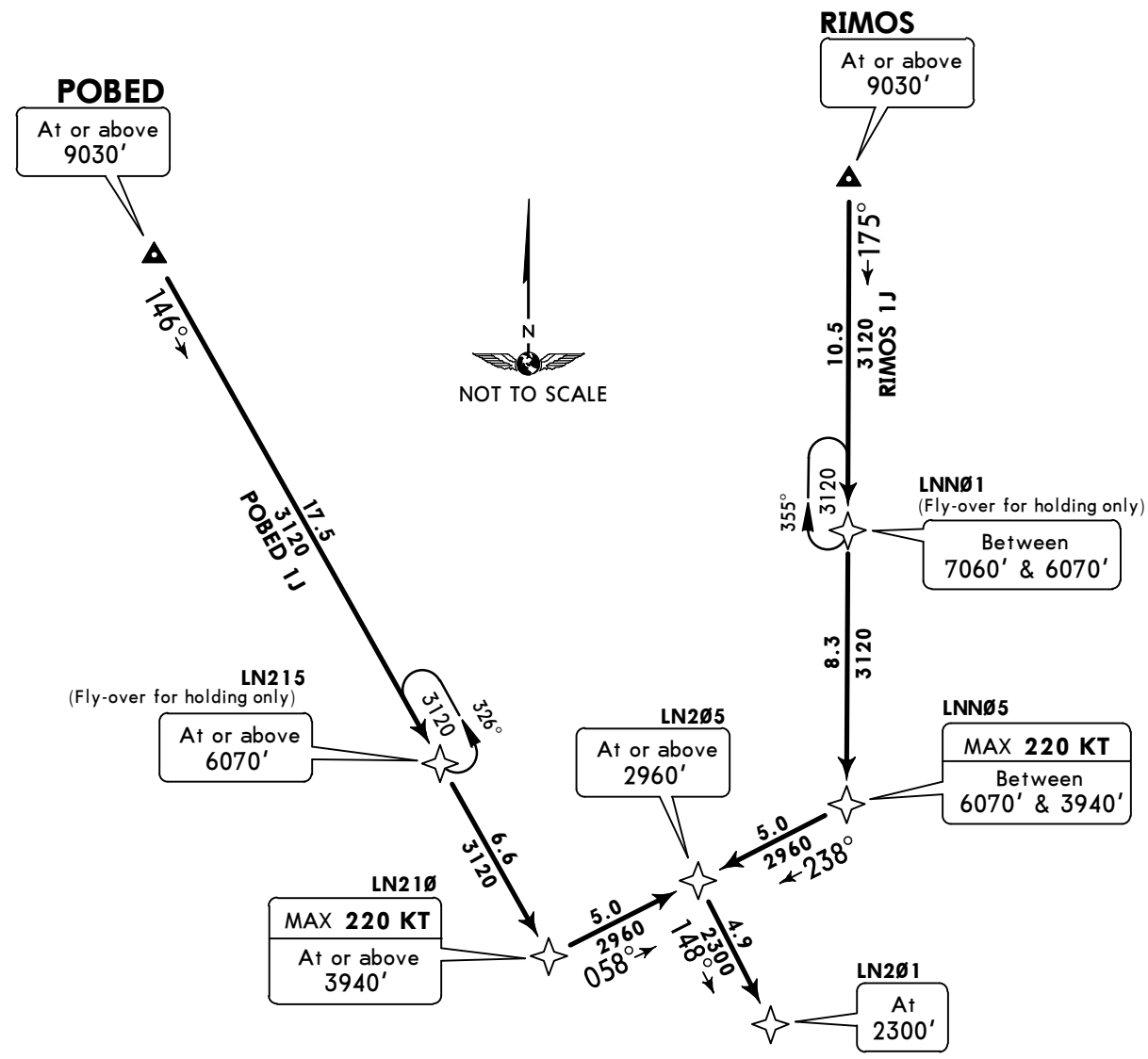
JEPPESEN
8 SEP 17 **10-2B** **Eff 14 Sep**

CHERNIVTSI, UKRAINE
RNAV TRANSITION

Apt Elev **826'**
Alt Set: hPa
Trans level: By ATC Trans alt: 10010'
1. RNAV 1 (GNSS).
2. RNAV 1 (P-RNAV) approval required otherwise advise ATC.
3. Speed restrictions are always mandatory unless cancelled by ATC.
4. EXPECT ILS approach on LN201.

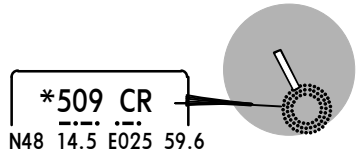


POBED 1J [POBE1J], RIMOS 1J [RIMO1J]
RWY 15 RNAV TRANSITIONS
BY ATC



FT/METER CONVERSION

FT	METER
10010'	3050m
9030'	2750m
7060'	2150m
6070'	1850m
3940'	1200m
3120'	950m
2960'	900m
2300'	700m



TRANSITION	ROUTING
POBED 1J	POBED (9030'+) - LN215 (6070'+) - LN210 (K220-; 3940'+) - LN205 (2960'+) - LN201 (2300').
RIMOS 1J	RIMOS (9030'+) - LNN01 (7060'-; 6070'+) - LNN05 (K220-; 6070'-; 3940'+) - LN205 (2960'+) - LN201 (2300').

UKLN/CWC
CHERNIVTSI

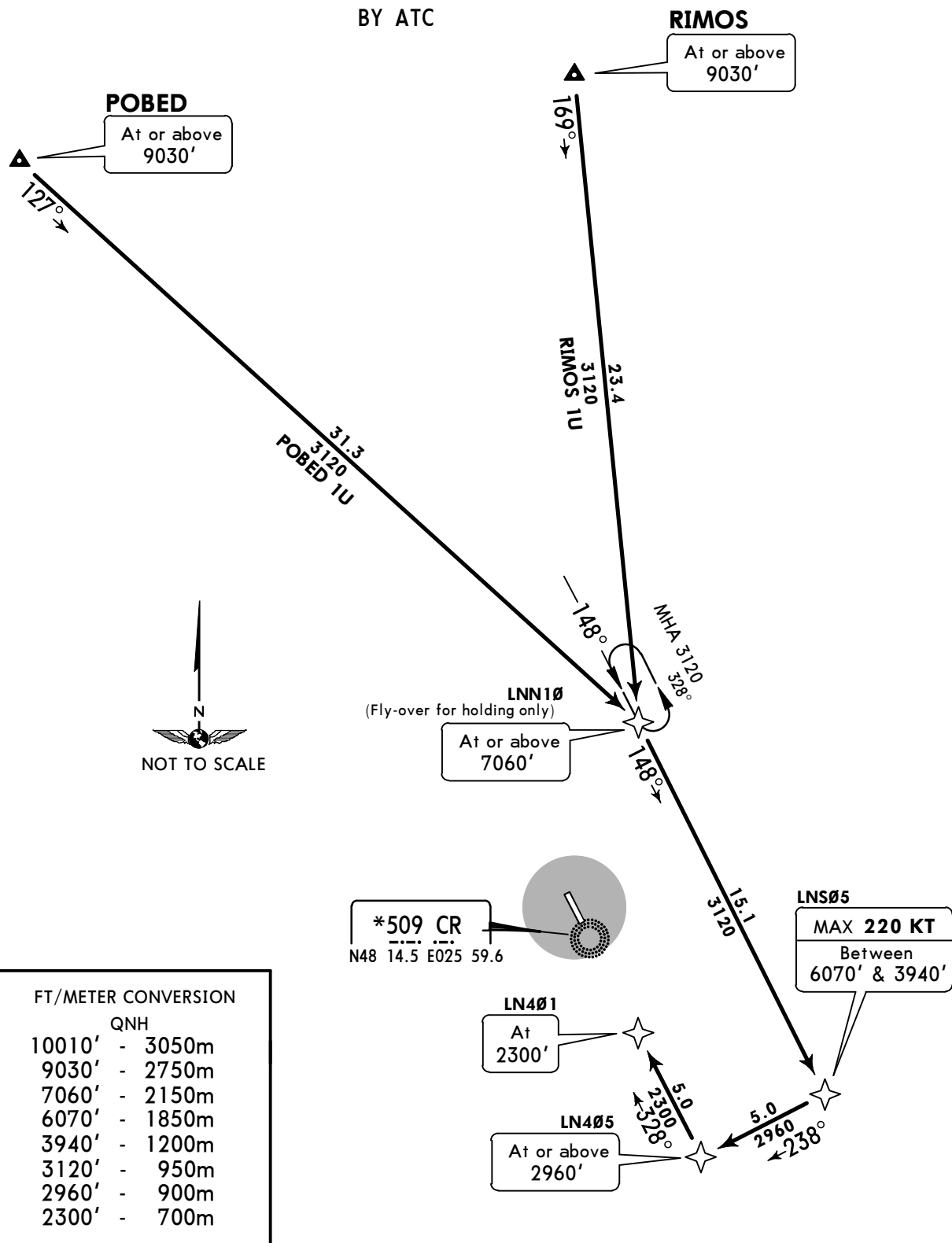
JEPPESEN
8 SEP 17 10-2C Eff 14 Sep

CHERNIVTSI, UKRAINE
RNAV TRANSITION

Apt Elev 826'	Alt Set: hPa Trans level: By ATC Trans alt: 10010' 1. RNAV 1 (GNSS). 2. RNAV 1 (P-RNAV) approval required otherwise advise ATC. 3. Speed restrictions are always mandatory unless cancelled by ATC. 4. EXPECT ILS approach on LN401.	<p>MSA CR NDB</p>
-------------------------	---	-----------------------

**POBED 1U [POBE1U], RIMOS 1U [RIMO1U]
RWY 33 RNAV TRANSITIONS**

BY ATC



FT/METER CONVERSION	
	QNH
10010'	- 3050m
9030'	- 2750m
7060'	- 2150m
6070'	- 1850m
3940'	- 1200m
3120'	- 950m
2960'	- 900m
2300'	- 700m

TRANSITION	ROUTING
POBED 1U	POBED (9030'+) - LNN10 (7060'+) - LNS05 (K220-; 6070'-; 3940'+) - LN405 (2960'+) - LN401 (2300').
RIMOS 1U	RIMOS (9030'+) - LNN10 (7060'+) - LNS05 (K220-; 6070-; 3940'+) - LN405 (2960'+) - LN401 (2300').

UKLN/CWC
CHERNIVTSI

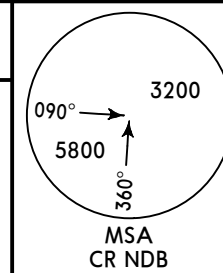
JEPPESEN
8 SEP 17 **(10-2D)** Eff 14 Sep

CHERNIVTSI, UKRAINE

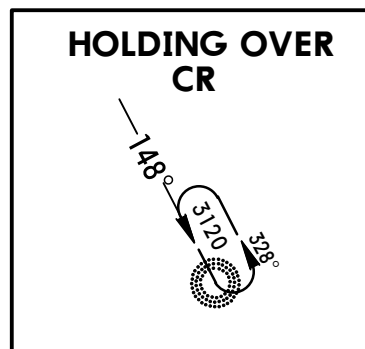
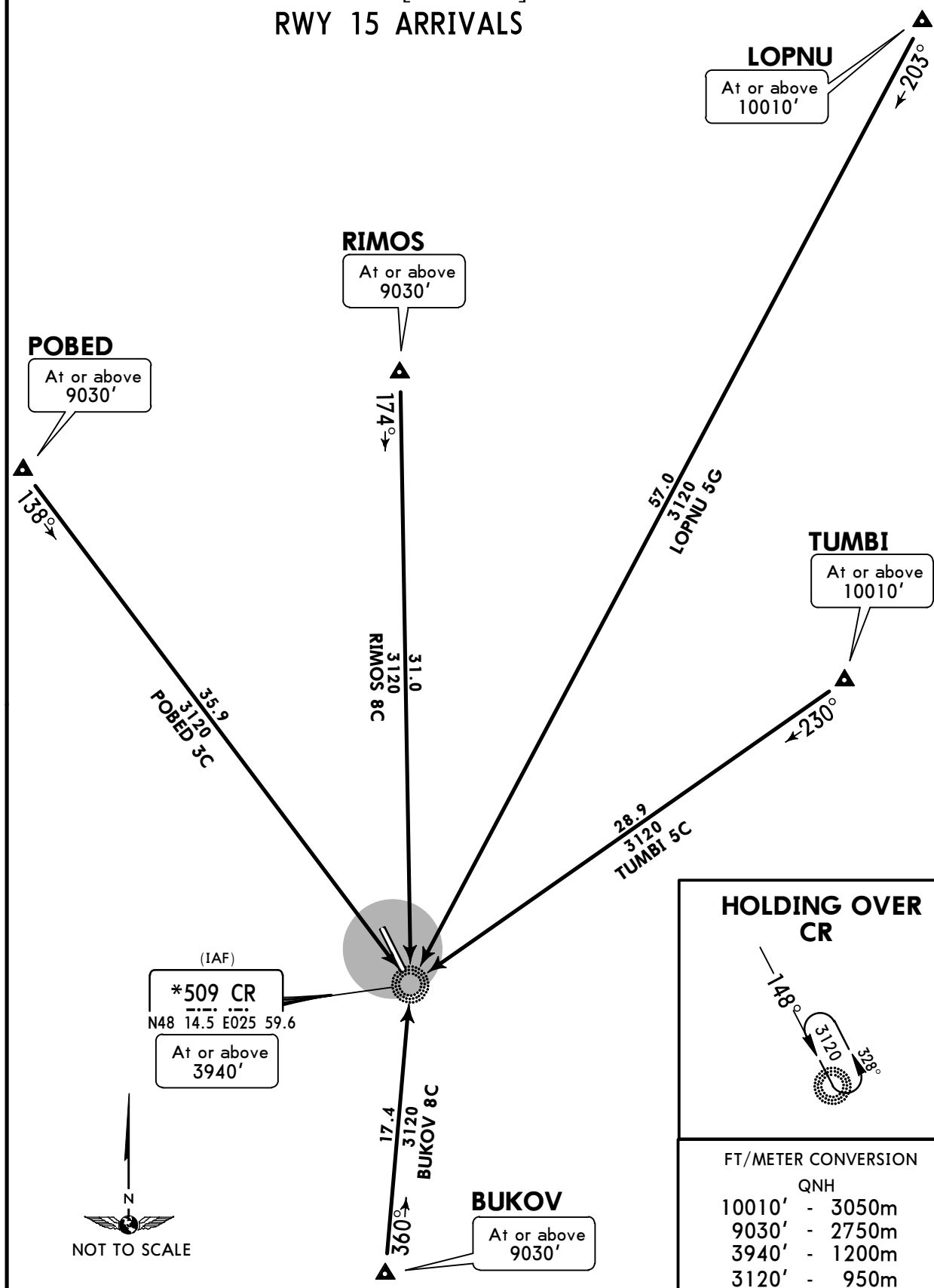
STAR

Apt Elev
826'

Alt Set: hPa
Trans level: By ATC Trans alt: 10010'



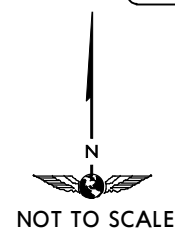
BUKOV 8C [BUK08C]
LOPNU 5G [LOPN5G]
POBED 3C [POBE3C]
RIMOS 8C [RIM08C]
TUMBI 5C [TUMB5C]
RWY 15 ARRIVALS



HOLDING OVER CR

FT/METER CONVERSION

FT	METER
10010'	3050m
9030'	2750m
3940'	1200m
3120'	950m



UKLN/CWC
CHERNIVTSI

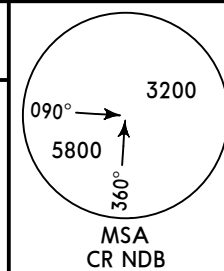
JEPPESEN
8 SEP 17 **(10-2E)** Eff 14 Sep

CHERNIVTSI, UKRAINE

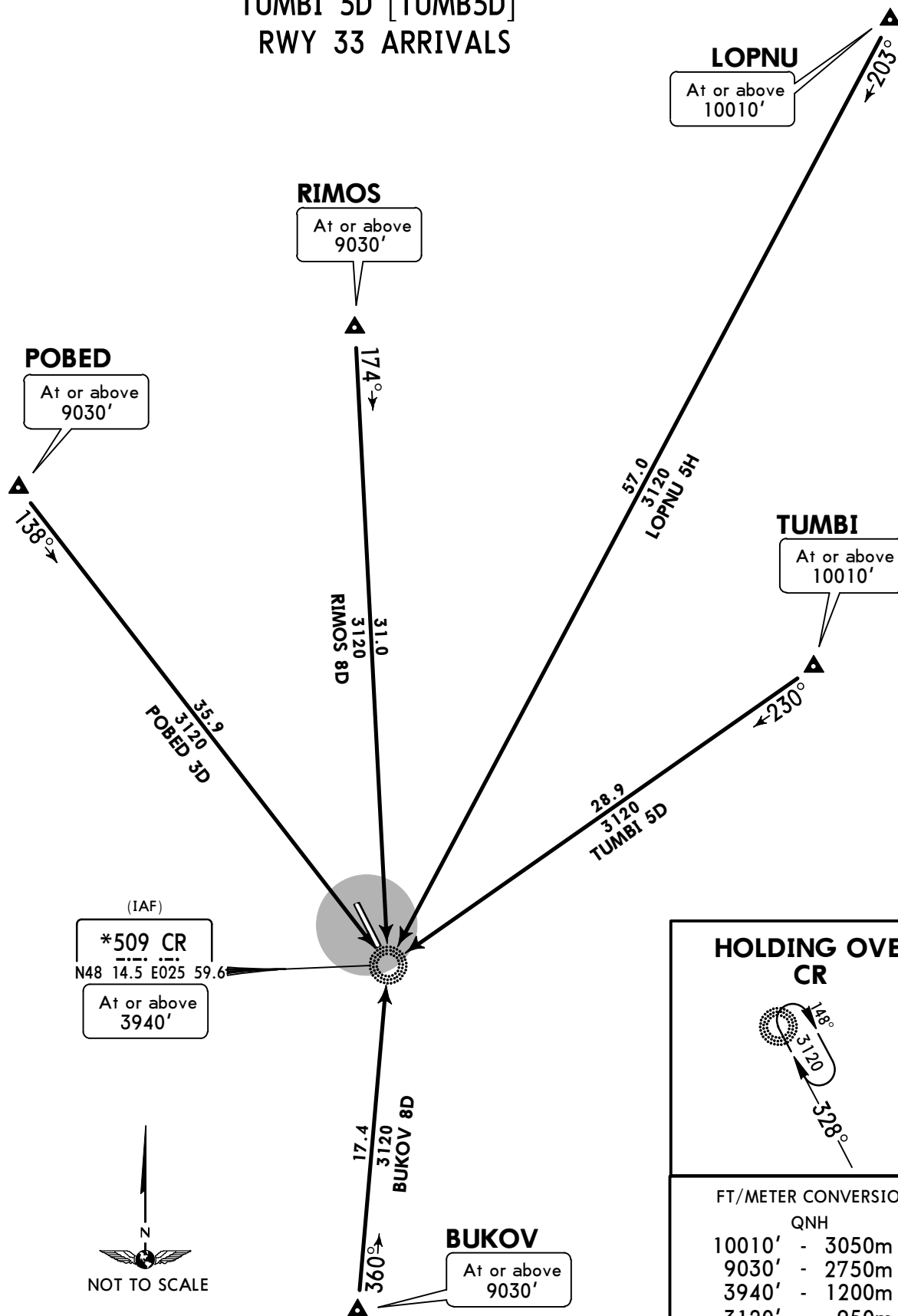
STAR

Apt Elev
826'

Alt Set: hPa
Trans level: By ATC Trans alt: 10010'



BUKOV 8D [BUK08D]
LOPNU 5H [LOPN5H]
POBED 3D [POBE3D]
RIMOS 8D [RIMO8D]
TUMBI 5D [TUMB5D]
RWY 33 ARRIVALS



UKLN/CWC
CHERNIVTSI

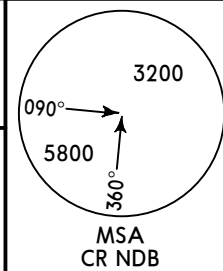
JEPPESEN
8 SEP 17 **10-3** **Eff 14 Sep**

CHERNIVTSI, UKRAINE

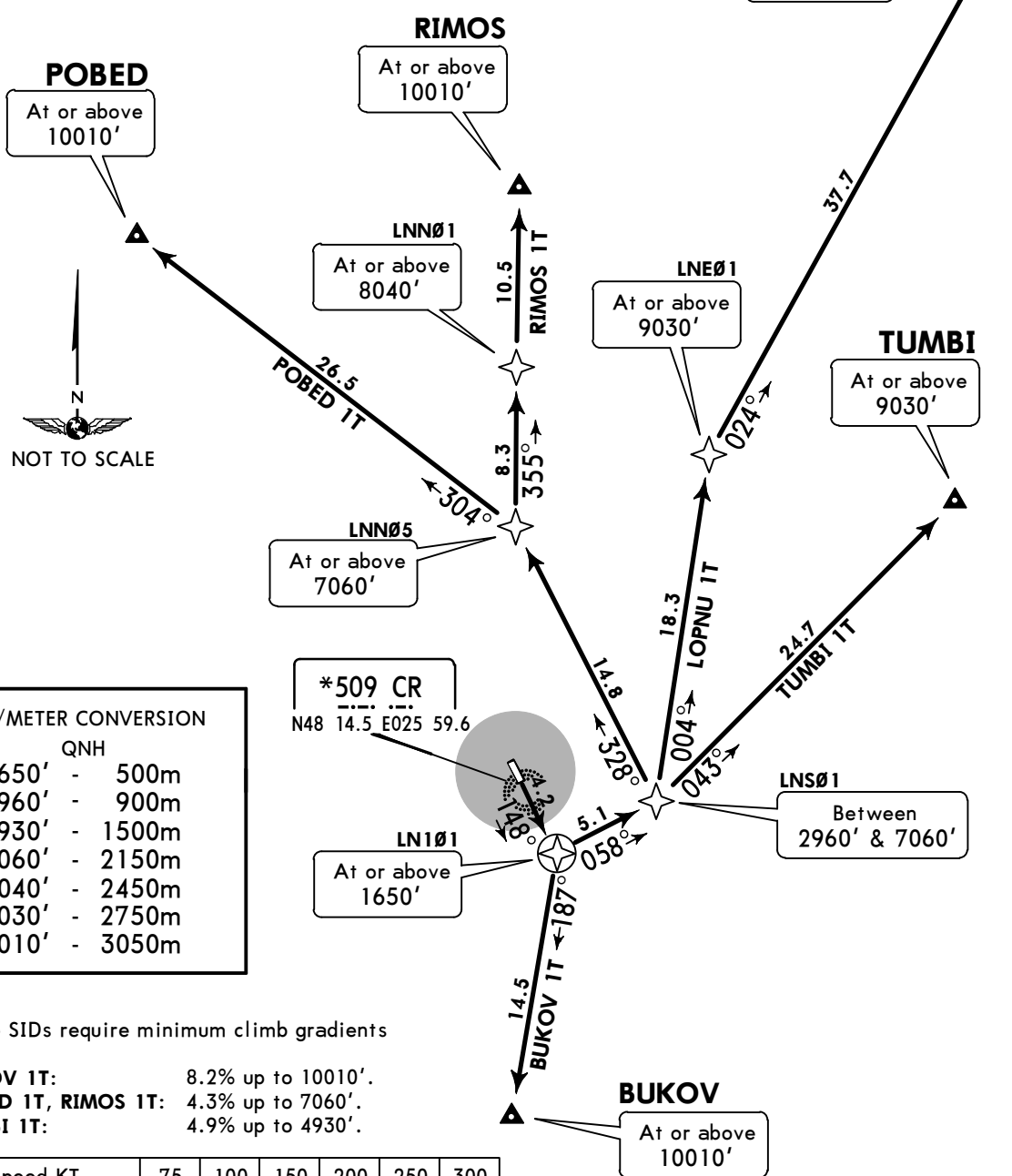
RNAV SID

Apt Elev
826'

Trans level: By ATC Trans alt: 10010'
1. RNAV 1 (GNSS).
2. RNAV 1 (P-RNAV) approval required otherwise advise ATC.
3. If unable to comply advise ATC.



**BUKOV 1T [BUKO1T], LOPNU 1T [LOPN1T]
POBED 1T [POBE1T], RIMOS 1T [RIMO1T]
TUMBI 1T [TUMB1T]
RWY 15 RNAV DEPARTURES**



FT/METER CONVERSION

QNH	
1650'	- 500m
2960'	- 900m
4930'	- 1500m
7060'	- 2150m
8040'	- 2450m
9030'	- 2750m
10010'	- 3050m

These SIDs require minimum climb gradients of

- BUKOV 1T:** 8.2% up to 10010'.
- POBED 1T, RIMOS 1T:** 4.3% up to 7060'.
- TUMBI 1T:** 4.9% up to 4930'.

Gnd speed-KT	75	100	150	200	250	300
4.3% V/V (fpm)	327	435	653	871	1089	1306
4.9% V/V (fpm)	372	496	744	992	1241	1489
8.2% V/V (fpm)	623	830	1246	1661	2076	2491

SID	ROUTING
BUKOV 1T	LN101 (1650'+) - BUKOV (10010'+).
LOPNU 1T	LN101 (1650'+) - LNS01 (2960'+; 7060'-) - LNE01 (9030'+) - LOPNU (9030'+).
POBED 1T	LN101 (1650'+) - LNS01 (2960'+; 7060'-) - LNN05 (7060'+) - POBED (10010'+).
RIMOS 1T	LN101 (1650'+) - LNS01 (2960'+; 7060'-) - LNN05 (7060'+) - LNN01 (8040'+) - RIMOS (10010'+).
TUMBI 1T	LN101 (1650'+) - LNS01 (2960'+; 7060'-) - TUMBI (9030'+).

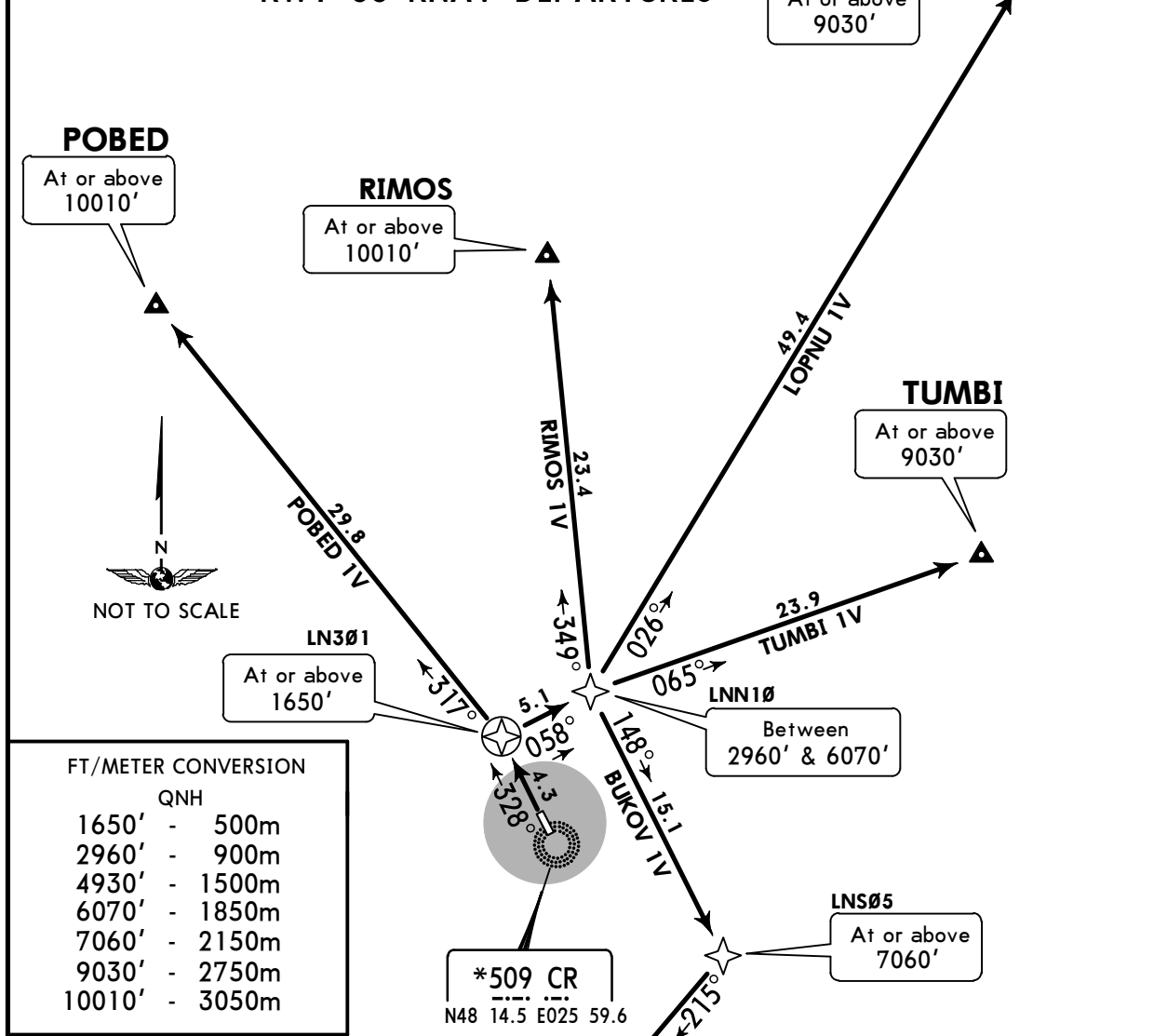
UKLN/CWC
CHERNIVTSI

JEPPESSEN
8 SEP 17 **10-3A** Eff 14 Sep

CHERNIVTSI, UKRAINE
RNAV SID

Apt Elev 826'	Trans level: By ATC Trans alt: 10010' 1. RNAV 1 (GNSS). 2. RNAV 1 (P-RNAV) approval required otherwise advise ATC. 3. If unable to comply advise ATC.	<p>MSA CR NDB</p>
-------------------------	--	-----------------------

**BUKOV 1V [BUK01V], LOPNU 1V [LOPN1V]
POBED 1V [POBE1V], RIMOS 1V [RIMO1V]
TUMBI 1V [TUMB1V]
RWY 33 RNAV DEPARTURES**



FT/METER CONVERSION

FT	METER
1650'	500m
2960'	900m
4930'	1500m
6070'	1850m
7060'	2150m
9030'	2750m
10010'	3050m

These SIDs require minimum climb gradients of

BUKOV 1V: 4.2% up to 7060'.
LOPNU 1V, TUMBI 1V: 4.9% up to 4930'.
POBED 1V: 5.7% up to 4930'.
RIMOS 1V: 3.9% up to 4930'.

Gnd speed-KT	75	100	150	200	250	300
3.9% V/V (fpm)	296	395	592	790	987	1185
4.2% V/V (fpm)	319	425	638	851	1063	1276
4.9% V/V (fpm)	372	496	744	992	1241	1489
5.7% V/V (fpm)	433	577	866	1154	1443	1732

SID	ROUTING
BUKOV 1V	LN301 (1650'+) - LNN10 (2960'+; 6070'-) - LNS05 (7060'+) - BUKOV (10010'+).
LOPNU 1V	LN301 (1650'+) - LNN10 (2960'+; 6070'-) - LOPNU (9030'+).
POBED 1V	LN301 (1650'+) - POBED (10010'+).
RIMOS 1V	LN301 (1650'+) - LNN10 (2960'+; 6070'-) - RIMOS (10010'+).
TUMBI 1V	LN301 (1650'+) - LNN10 (2960'+; 6070'-) - TUMBI (9030'+).

UKLN/CWC
CHERNIVTSI

JEPPESEN

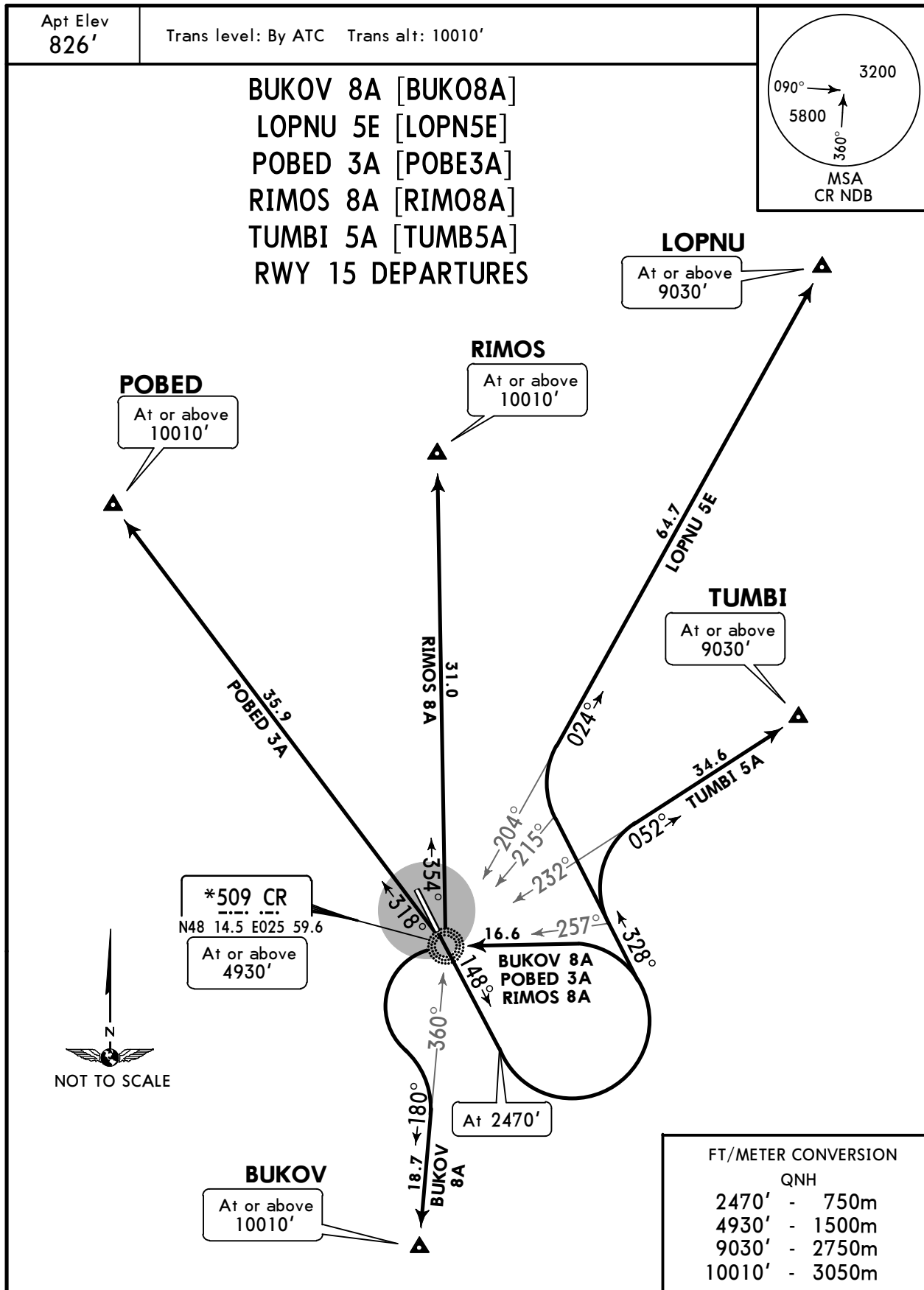
CHERNIVTSI, UKRAINE

8 SEP 17

10-3B

Eff 14 Sep

SID



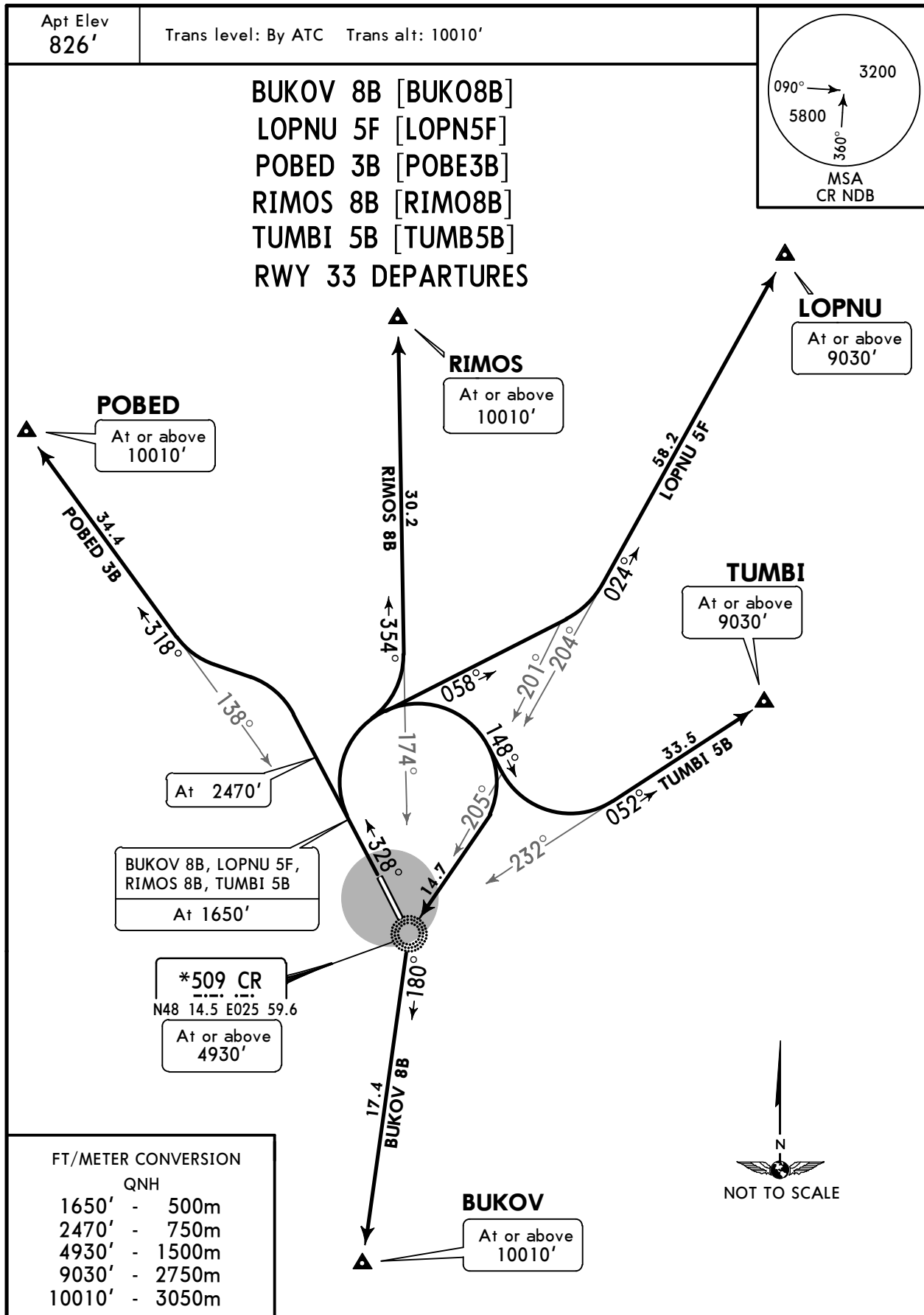
SID	ROUTING
BUKOV 8A	Climb on 148° track to 2470', turn LEFT to CR, turn LEFT, intercept 180° bearing from CR to BUKOV.
LOPNU 5E	Climb on 148° track to 2470', turn LEFT, 328° track, when passing 215° bearing to CR turn RIGHT, intercept 024° bearing from CR to LOPNU.
POBED 3A	Climb on 148° track to 2470', turn LEFT to CR, turn RIGHT, 318° bearing to POBED.
RIMOS 8A	Climb on 148° track to 2470', turn LEFT to CR, turn RIGHT, 354° bearing to RIMOS.
TUMBI 5A	Climb on 148° track to 2470', turn LEFT, 328° track, when passing 257° bearing to CR turn RIGHT, intercept 052° bearing from CR to TUMBI.

UKLN/CWC
CHERNIVTSI

JEPPESEN
8 SEP 17 **10-3C** Eff 14 Sep

CHERNIVTSI, UKRAINE

SID



SID	ROUTING
BUKOV 8B	Climb on 328° track to 1650', turn RIGHT to CR, turn LEFT, 180° bearing to BUKOV.
LOPNU 5F	Climb on 328° track to 1650', turn RIGHT, 058° track, when passing 201° bearing to CR turn LEFT, intercept 024° bearing from CR to LOPNU.
POBED 3B	Climb on 328° track to 2470', turn LEFT, intercept 318° bearing from CR to POBED.
RIMOS 8B	Climb on 328° track to 1650', turn RIGHT, intercept 354° bearing from CR to RIMOS.
TUMBI 5B	Climb on 328° track to 1650', turn RIGHT, 148° track, when passing 205° bearing to CR turn LEFT, intercept 052° bearing from CR to TUMBI.

UKLN/CWC

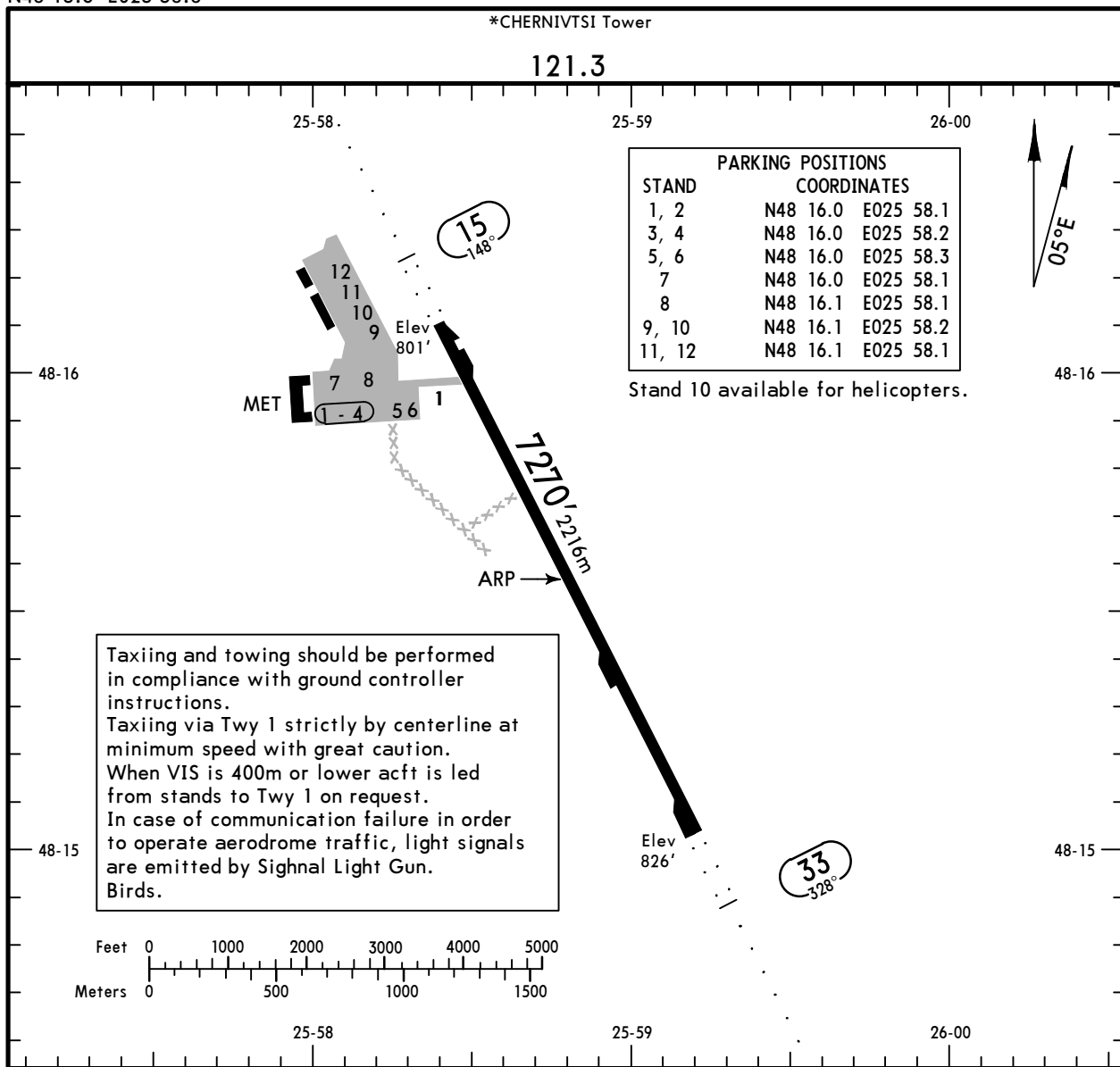
Apt Elev **826'**
N48 15.6 E025 58.8

JEPPESEN

21 APR 17 **(10-9)** Eff 27 Apr

CHERNIVTSI, UKRAINE

CHERNIVTSI



ADDITIONAL RUNWAY INFORMATION						
RWY			USABLE LENGTHS			WIDTH
			LANDING BEYOND		TAKE-OFF	
			Threshold	Glide Slope		
15 33	RL (60m)	ALS	RVR	6116'	1864m	138'
				6237'	1901m	42m

Standard			TAKE-OFF		
Low Visibility Take-off					
Day: RL & RCLM Night: RL	Day: RL or RCLM Night: RL		Adequate vis ref (Day only)		
A					
B					
C	RVR 300m	400m		500m	
D					

UKLN/CWC
CHERNIVTSI

JEPPESEN
21 APR 17 **(11-1)** Eff 27 Apr

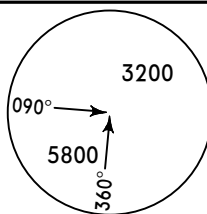
CHERNIVTSI, UKRAINE
ILS Rwy 15

*CHERNIVTSI Tower

121.3

BRIEFING STRIP™

LOC ICN *109.5	Final Apch Crs 148°	GS OM 1509' (708')	ILS DA(H) Refer to Minimums	Apt Elev 826' Rwy 801'
-----------------------------	----------------------------------	---------------------------------	--------------------------------------	---------------------------



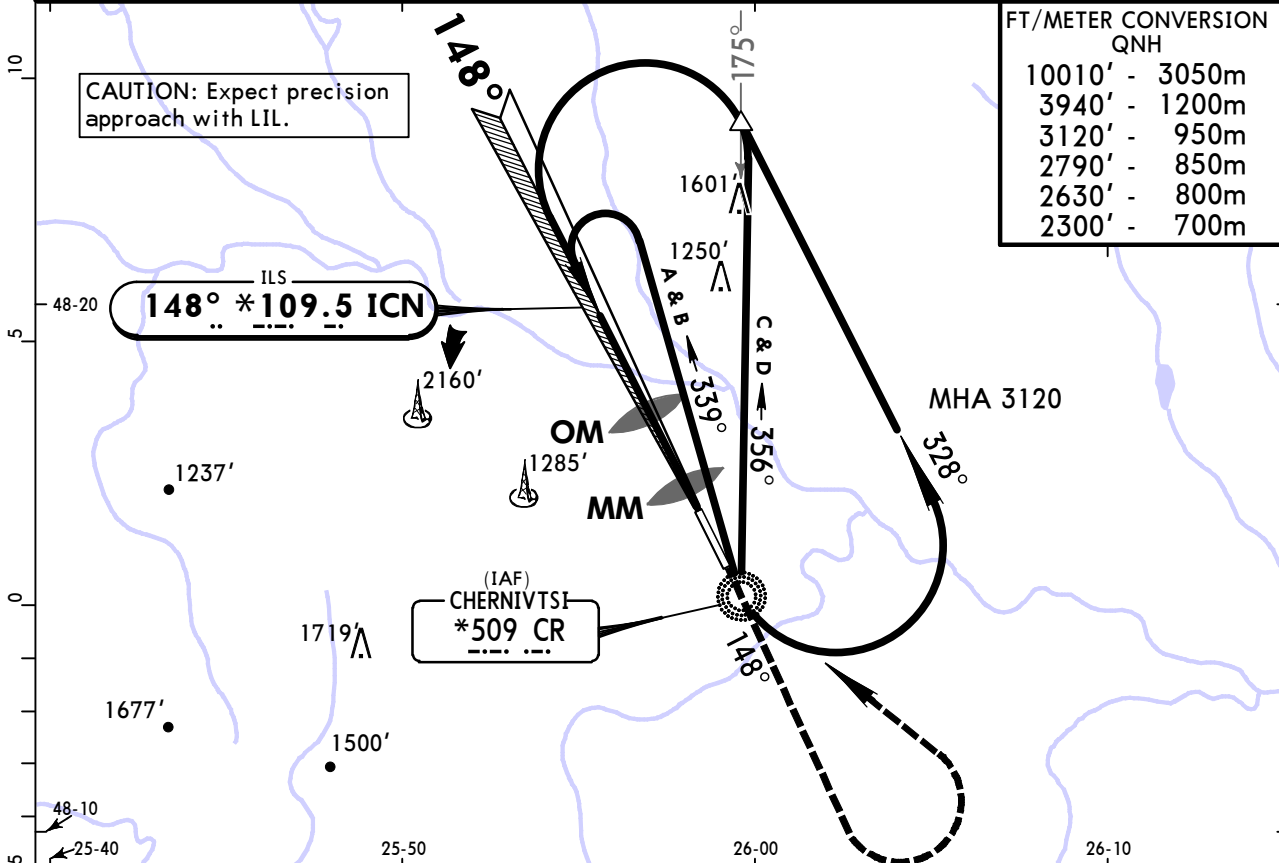
MISSED APCH: Climb on 148° to 3120', then turn LEFT to CR NDB climbing to 3940', then according to chart.

Alt Set: hPa Rwy Elev: 29 hPa Trans level: By ATC Trans alt: 10010'

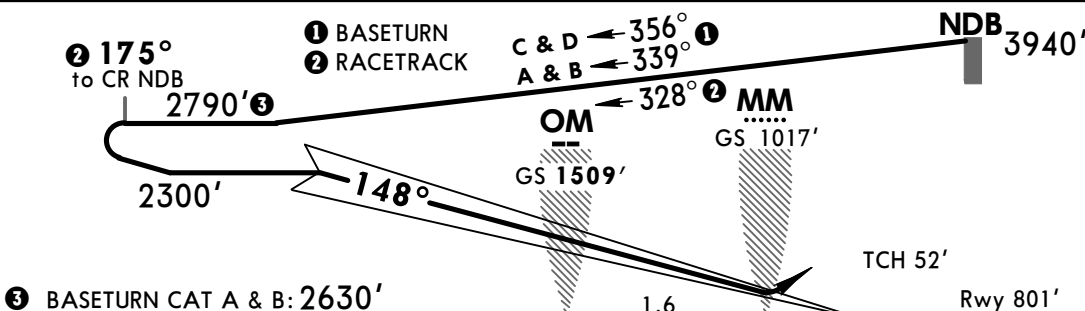
MSA CR NDB

FT/METER CONVERSION
QNH

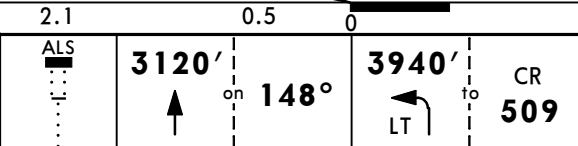
10010'	-	3050m
3940'	-	1200m
3120'	-	950m
2790'	-	850m
2630'	-	800m
2300'	-	700m



RACETRACK:
CAT C & D:
2 Min
CAT A & B:
3 Min
BASETURN:
Start
turn at
CAT C & D:
2 Min
CAT A & B:
3 Min



Gnd speed-Kts	70	90	100	120	140	160
GS	3.00°	372	478	531	637	743



Standard STRAIGHT-IN LANDING RWY 15 ILS

DA(H)	A: 1027' (226')	C: 1047' (246')
	B: 1037' (236')	D: 1057' (256')
	FULL	ALS out
A		RVR 1200m
B	RVR 1000m	
C		RVR 1300m
D	RVR 1100m	

LOC (GS out)

	NOT AUTHORIZED
--	----------------

CIRCLE-TO-LAND 1
Prohibited West of apt between 180° and 317° from ARP

Max Kts	MDA(H)	VIS
100	1320' (519')	1500m
135	1320' (519')	1600m
180	1660' (859')	2400m
205	2010' (1209')	3600m

PANS OPS

1 Circling height based on rwy 15 thresh elev of 801'.

CHANGES: NDB transferred to 16-1. Procedure revised.

© JEPPESEN, 2004, 2017. ALL RIGHTS RESERVED.

UKLN/CWC CHERNIVTSI

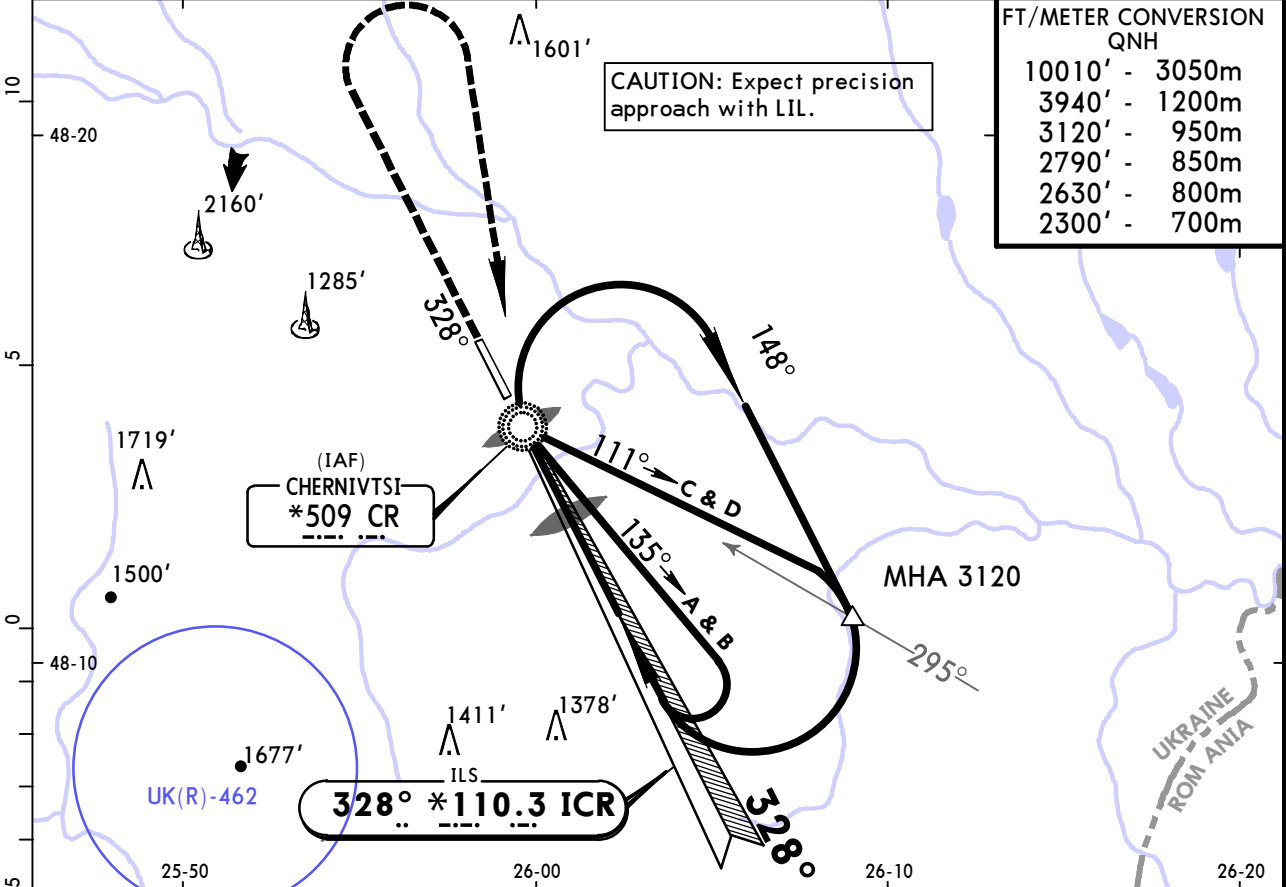
JEPPesen
21 APR 17 **(11-2)** Eff 27 Apr

CHERNIVTSI, UKRAINE ILS Rwy 33

*CHERNIVTSI Tower

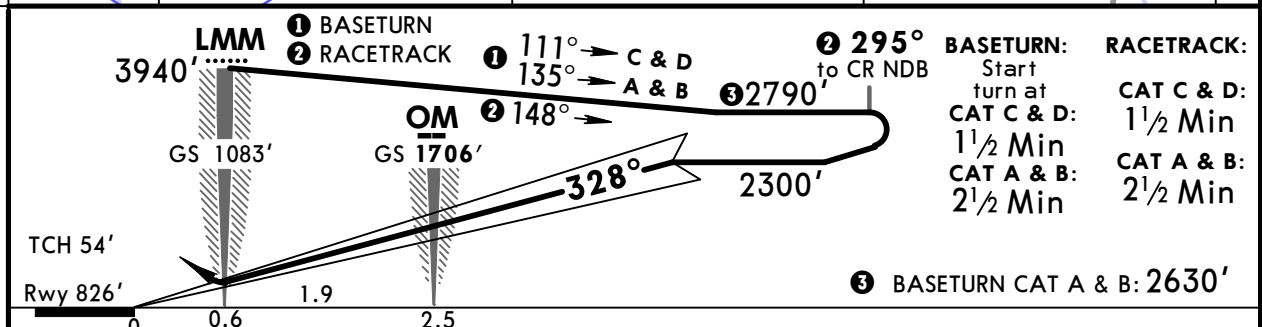
121.3

LOC ICR *110.3	Final Apch Crs 328°	GS OM 1706' (880')	ILS DA(H) Refer to Minimums	Apt Elev 826' Rwy 826'	<p>MSA CR NDB</p>
MISSED APCH: Climb on 328° to 3120', then turn RIGHT to CR NDB climbing to 3940', then according to chart.					
Alt Set: hPa		Rwy Elev: 30 hPa		Trans level: By ATC	
				Trans alt: 10010'	



FT/METER CONVERSION QNH

10010'	-	3050m
3940'	-	1200m
3120'	-	950m
2790'	-	850m
2630'	-	800m
2300'	-	700m



Gnd speed-Kts	70	90	100	120	140	160	ALS
GS	3.00°	372	478	531	637	849	

PANS OPS	Standard		STRAIGHT-IN LANDING RWY 33		ILS		LOC (GS out)		CIRCLE-TO-LAND	
			A: 1052' (226')		C: 1072' (246')				Prohibited West of apt between 180° and 317° from ARP	
			B: 1062' (236')		D: 1082' (256')					
			FULL		ALS out					
	A								Max Kts	
B	RVR 1000m			RVR 1200m				100	1320' (494')	1500m
C				RVR 1300m				135	1330' (504')	1600m
D	RVR 1100m					NOT AUTHORIZED		180	1660' (834')	2400m
								205	2010' (1184')	3600m

CHANGES: NDB procedure transferred to 16-2. Procedure revised.

UKLN/CWC
CHERNIVTSI

JEPPESEN
25 MAY 18 **(16-1)**

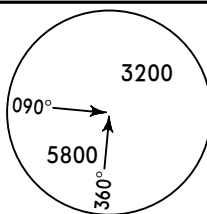
CHERNIVTSI, UKRAINE
NDB Rwy 15

*CHERNIVTSI Tower

121.3

BRIEFING STRIP™

NDB CR *509	Final Apch Crs 148°	Minimum Alt No FAF	DA/MDA(H) (CONDITIONAL) 1350' (549')	Apt Elev 826' Rwy 801'
-----------------------	-------------------------------	-----------------------	---	---------------------------



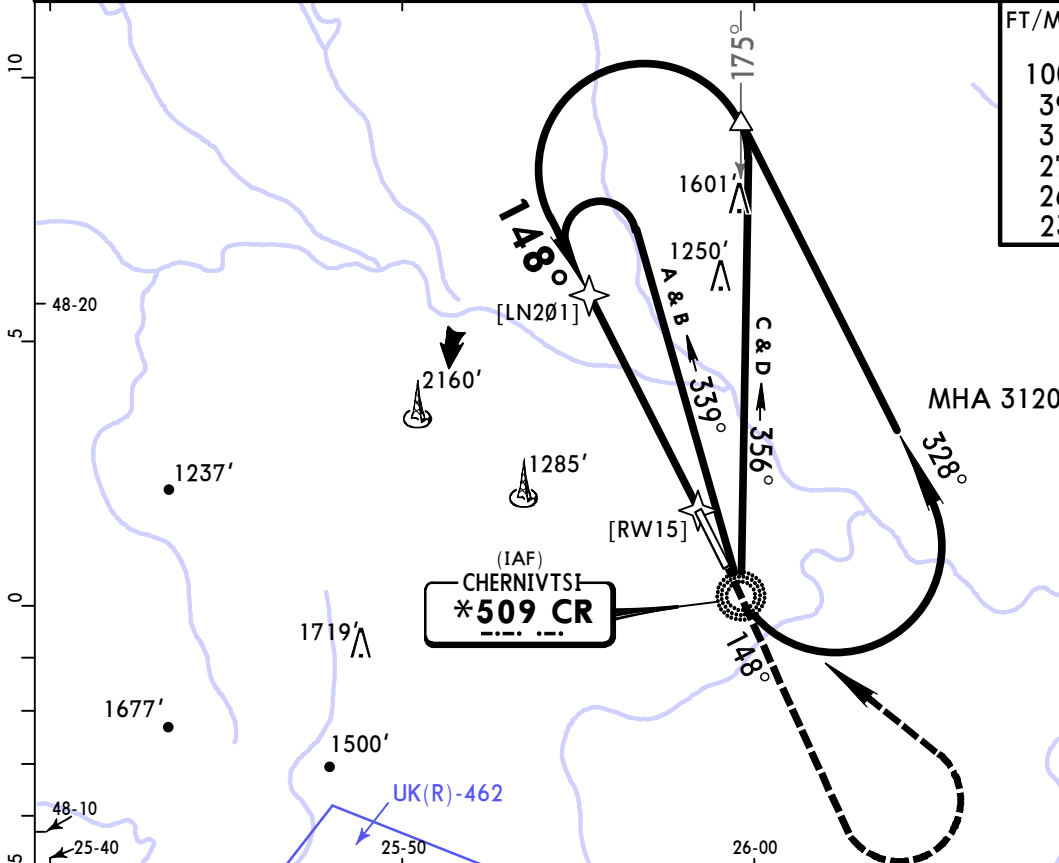
MISSED APCH: Climb on 148° to 3120', then turn LEFT to CR NDB climbing to 3940', then according to chart.

Alt Set: hPa Rwy Elev: 29 hPa Trans level: By ATC Trans alt: 10010'

MSA CR NDB

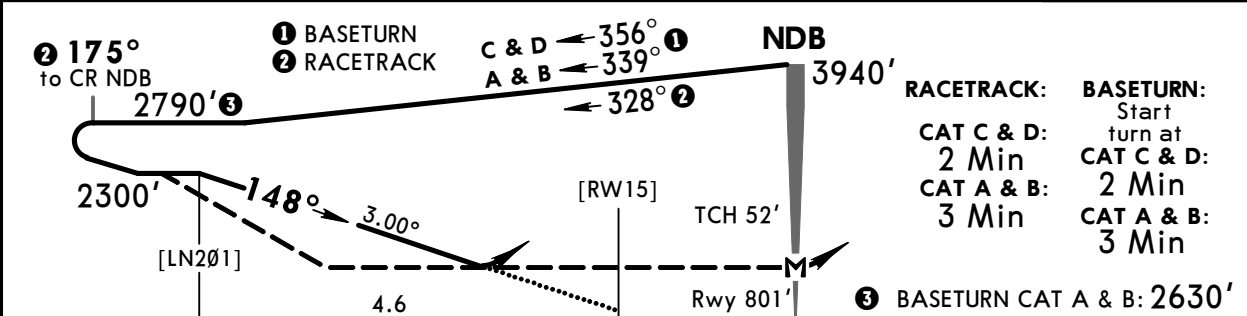
FT/METER CONVERSION
QNH

10010'	-	3050m
3940'	-	1200m
3120'	-	950m
2790'	-	850m
2630'	-	800m
2300'	-	700m



RECOMMENDED ALTITUDES

DIST to RW15	ALTITUDE
4.0	2150'
3.0	1830'
2.0	1510'

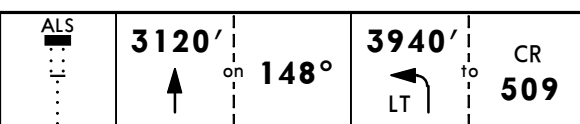


RACETRACK:
CAT C & D: 2 Min
CAT A & B: 3 Min

BASETURN:
Start turn at
CAT C & D: 2 Min
CAT A & B: 3 Min

③ BASETURN CAT A & B: 2630'

Gnd speed-Kts	70	90	100	120	140	160
Descent Angle	3.00°	372	478	531	637	743
MAP at NDB						



PANS OPS	STRAIGHT-IN LANDING RWY 15				Max Kts	CIRCLE-TO-LAND ① Prohibited West of apt between 180° and 317° from ARP
	CDFA with LN201		non-CDFA w/o LN201			
	DA/MDA(H) 1350' (549')		MDA(H) 1350' (549')			
	ALS out		ALS out			
A	RVR 1500m		RVR 2500m	RVR 2700m	100	1350' (549') ② 1500m
B	RVR 1500m		RVR 2500m	RVR 2700m	135	1350' (549') ② 1600m
C	RVR 2300m	RVR 2400m	RVR 2700m	RVR 2900m	180	1660' (859') ② 2400m
D	RVR 2300m	RVR 2400m	RVR 2700m	RVR 2900m	205	2010' (1209') 3600m

① Circling height based on rwy 15 thresh elev of 801'. ② or higher straight-in minimums.

**UKLN/CWC
CHERNIVTSI**

JEPPESSEN
25 MAY 18 **(16-2)**

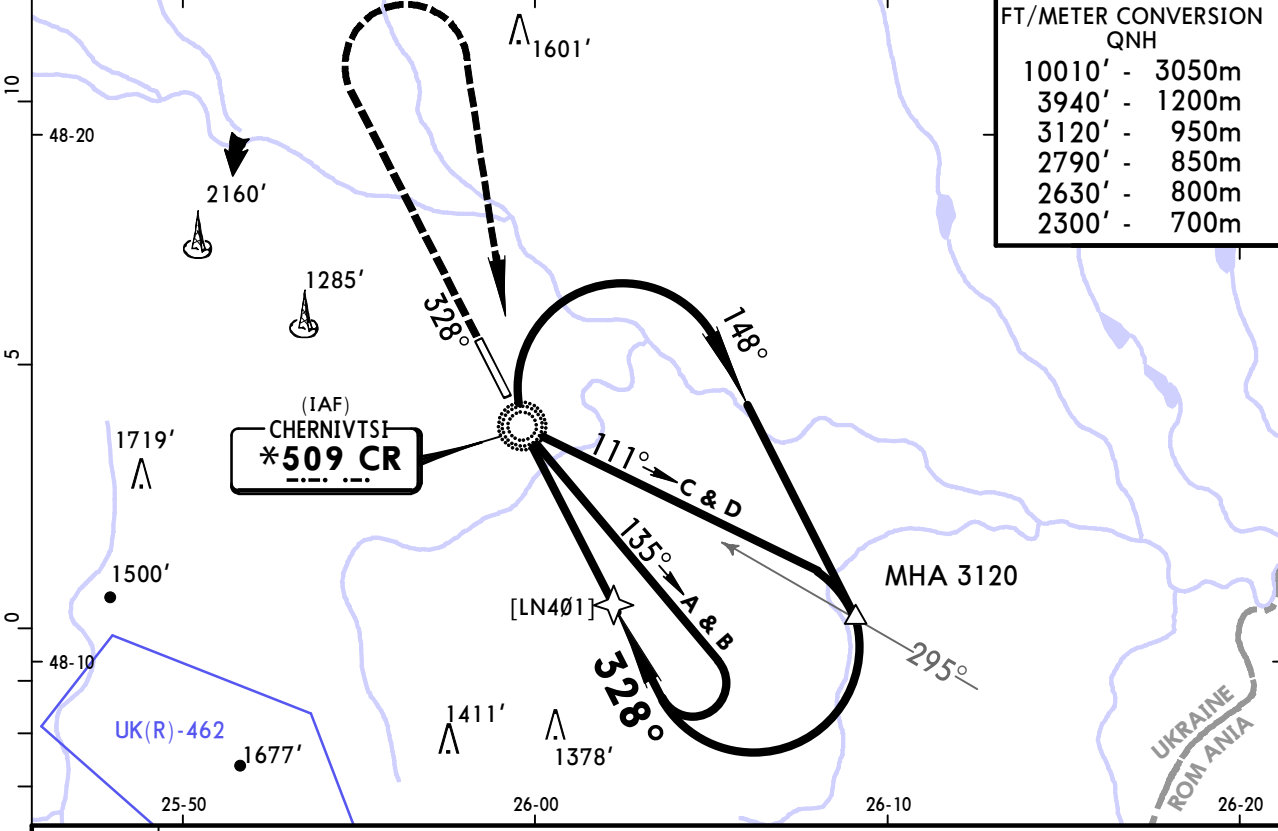
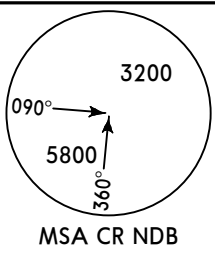
**CHERNIVTSI, UKRAINE
NDB Rwy 33**

*CHERNIVTSI Tower

121.3

BRIEFING STRIP™

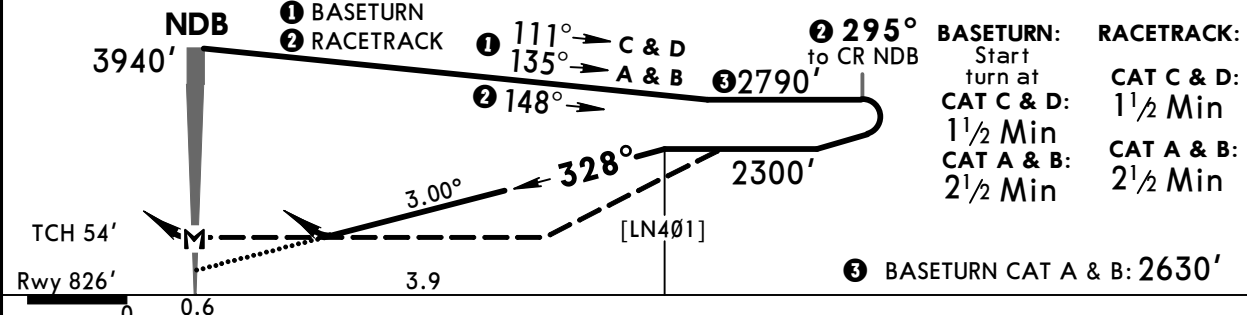
NDB CR *509	Final Apch Crs 328°	Minimum Alt No FAF	DA/MDA(H) (CONDITIONAL) 1760' (934')	Apt Elev 826' Rwy 826'
MISSED APCH: Climb on 328° to 3120', then turn RIGHT to CR NDB climbing to 3940', then according to chart.				
Alt Set: hPa	Rwy Elev: 30 hPa	Trans level: By ATC	Trans alt: 10010'	



**FT/METER CONVERSION
QNH**

10010'	-	3050m
3940'	-	1200m
3120'	-	950m
2790'	-	850m
2630'	-	800m
2300'	-	700m

DIST to NDB	3.0
ALTITUDE	2050'



BASETURN: Start turn at	RACETRACK:
CAT C & D: 1 1/2 Min	CAT C & D: 1 1/2 Min
CAT A & B: 2 1/2 Min	CAT A & B: 2 1/2 Min

③ BASETURN CAT A & B: 2630'

Gnd speed-Kts	70	90	100	120	140	160	ALS ↑	3120'	on 328°	3940'	to CR 509
Descent Angle	3.00°	372	478	531	637	849					

PANS OPS	STRAIGHT-IN LANDING RWY 33				CIRCLE-TO-LAND Prohibited West of apt between 180° and 317° from ARP			
	CDFA with LN401		non-CDFA w/o LN401		CDFA with LN401		non-CDFA w/o LN401	
	DA/MDA(H) 1760' (934')		MDA(H) 1760' (934')		DA/MDA(H) 1760' (934')		MDA(H) 1760' (934')	
	ALS out		ALS out		ALS out		ALS out	
	A	RVR 1500m	RVR 4300m	RVR 4500m	Max Kts	100	1760' (934')	1500m
B	RVR 1500m	RVR 4300m	RVR 4500m	135		1760' (934')	1600m	
C	RVR 2400m	RVR 4500m	RVR 4700m	180		1760' (934')	2400m	
D	RVR 2400m	RVR 4500m	RVR 4700m	205		2010' (1184')	3600m	

Chart changes since cycle 19-2018

ADD = added chart, REV = revised chart, DEL = deleted chart.

ACT	PROCEDURE IDENT	INDEX	REV DATE	EFF DATE
-----	-----------------	-------	----------	----------

CHERNIVTSI, (CHERNIVTSI - UKLN)

TERMINAL CHART CHANGE NOTICES

No Chart Change Notices for Airport UKLN