

General Information

Location: IVANO-FRANKIVS'K UKR
ICAO/IATA: UKLI / IFO
Lat/Long: N48° 53.03', E024° 41.07'
Elevation: 919 ft

Airport Use: Public
Daylight Savings: Observed
UTC Conversion: -2:00 = UTC
Magnetic Variation: 6.0° E

Fuel Types: Jet A-1
Repair Types: Minor Airframe, Minor Engine
Customs: Yes
Airport Type: IFR
Landing Fee: Yes
Control Tower: Yes
Jet Start Unit: No
LLWS Alert: No
Beacon: No

Sunrise: 0525 Z
Sunset: 1446 Z

Runway Information

Runway: 10
Length x Width: 8202 ft x 144 ft
Surface Type: concrete
TDZ-Elev: 919 ft
Lighting: Edge, ALS

Runway: 28
Length x Width: 8202 ft x 144 ft
Surface Type: concrete
TDZ-Elev: 904 ft
Lighting: Edge, ALS

Communication Information

Franko Tower: 134.850
Franko Tower: 124.000 Military
Franko Radar Approach: 128.500 Military
Franko Radar Approach: 127.300

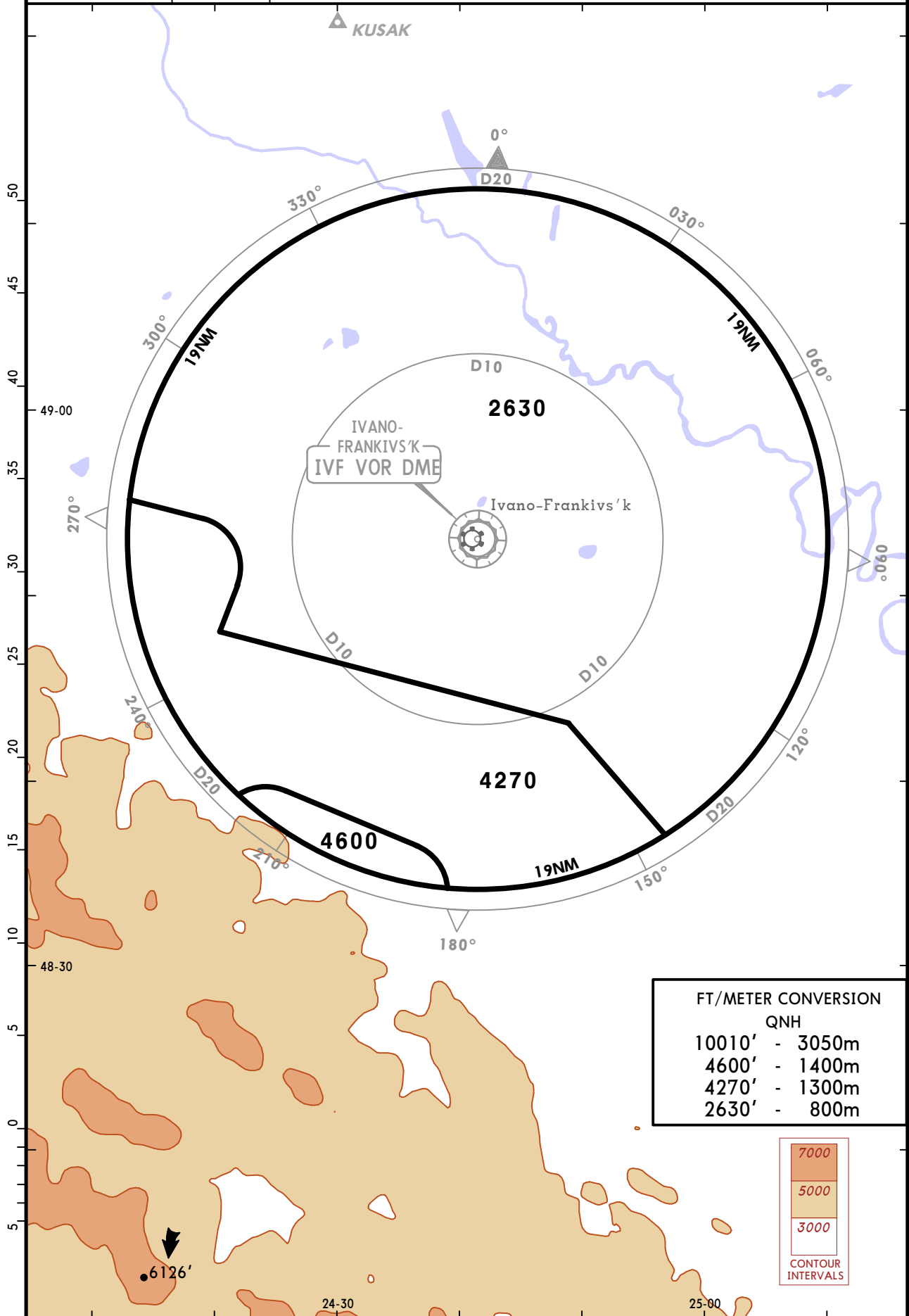
UKLI/IFO
IVANO-FRANKIVS'K



JEPPESEN
16 JAN 15 **(10-1R)**

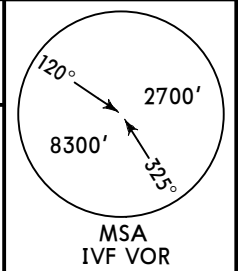
IVANO-FRANKIVS'K, UKRAINE
RADAR MINIMUM ALTITUDES

<p>*FRANKO Radar 127.30</p>	<p><i>Apt Elev</i> 919'</p>	<p>Alt Set: hPa (MM on request) Trans level: By ATC Trans alt: 10010' 1. This chart may only be used for cross-checking of altitudes assigned while under radar control. 2. MRVA are safe if the temperature at the surface is +6°C or above. For lower temperatures, corrected minimum levels will be provided by ATC.</p>
----------------------------------------	----------------------------------------	-----------------------------------------------------------------------------------------------------------------------------------------------------------------------------------------------------------------------------------------------------------------------------------------------------------------------------------------------------------------------

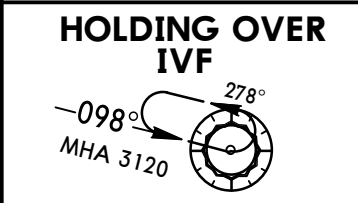
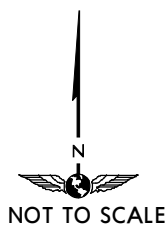
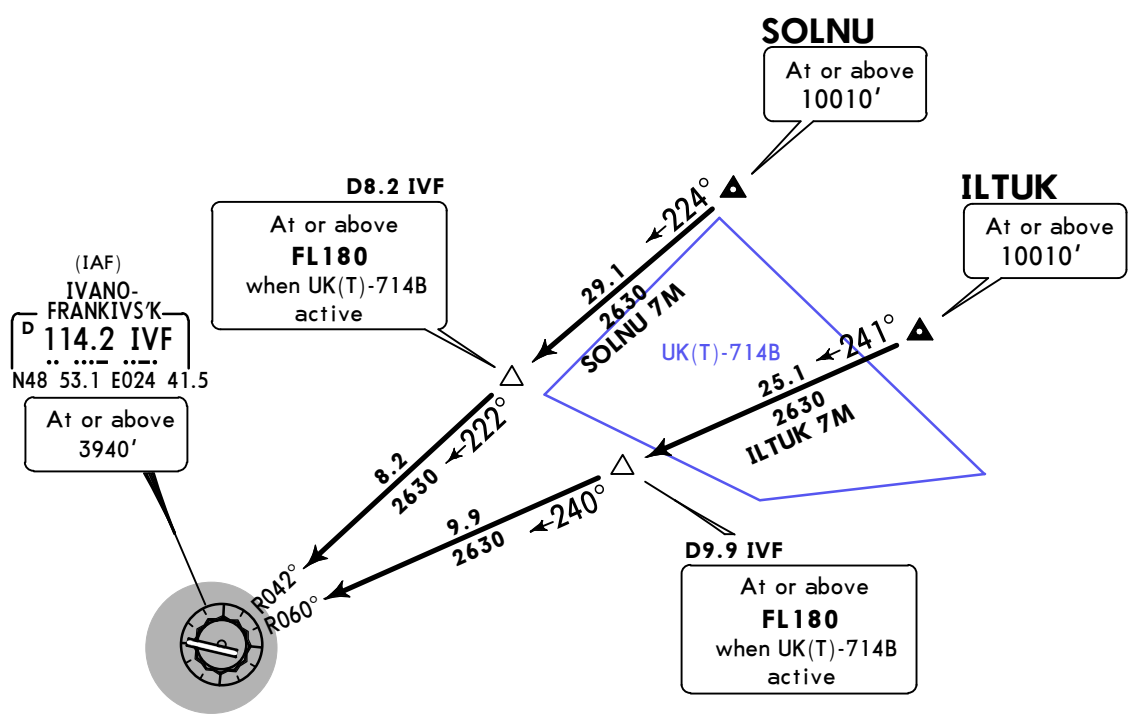


UKLI/IFO
IVANO-FRANKIVS'K

Apt Elev **919'**
 Alt Set: hPa (MM on request)
 Trans level: By ATC Trans alt: 10010'



ILTUK 7M [ILTU7M]
SOLNU 7M [SOLN7M]
RWY 10 ARRIVALS



FT/METER CONVERSION

QNH

10010'	-	3050m
3940'	-	1200m
3120'	-	950m
2630'	-	800m

STAR	ROUTING
ILTUK 7M	On 241° track to D9.9 IVF, turn LEFT, 240° track to IVF, then according to approach chart.
SOLNU 7M	On 224° track to D8.2 IVF, turn LEFT, 222° track to IVF, then according to approach chart.

UKLI/IFO
IVANO-FRANKIVS'K

JEPPESEN **IVANO-FRANKIVS'K, UKRAINE**

27 JAN 17

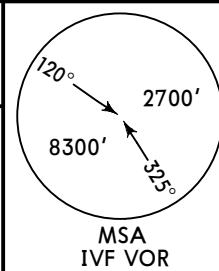
10-2A

Eff 2 Feb

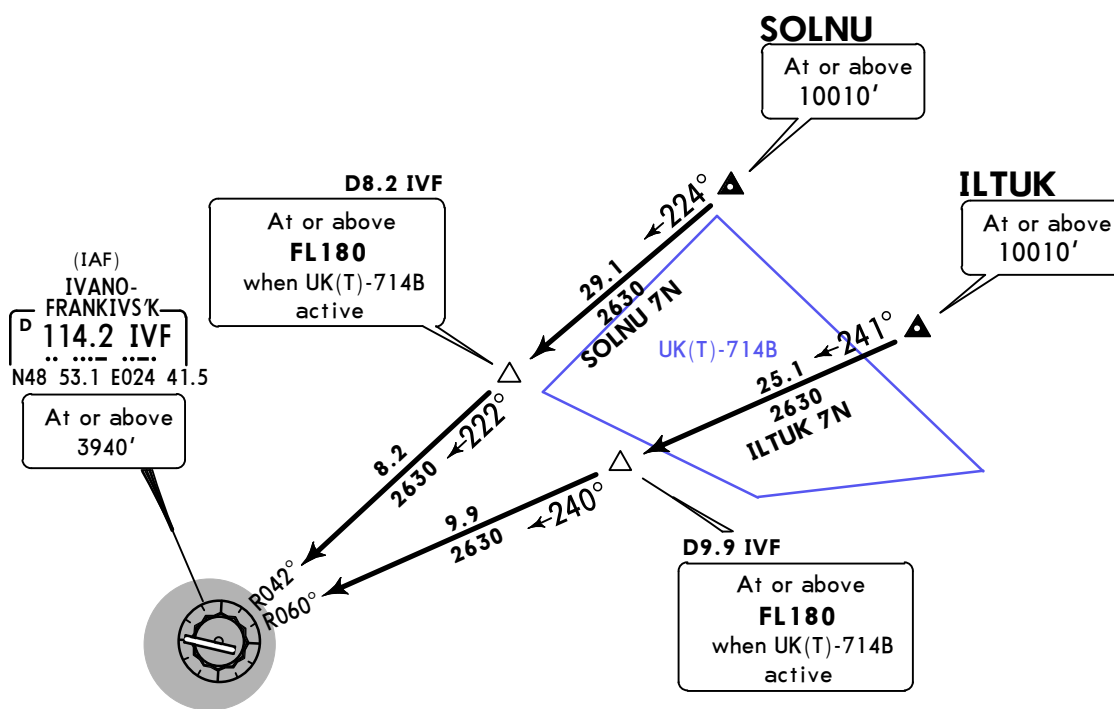
STAR

Apt Elev
919'

Alt Set: hPa (MM on request)
 Trans level: By ATC Trans alt: 10010'



ILTUK 7N [ILTU7N]
SOLNU 7N [SOLN7N]
RWY 28 ARRIVALS



HOLDING OVER IVF



FT/METER CONVERSION

QNH
 10010' - 3050m
 3940' - 1200m
 2630' - 800m

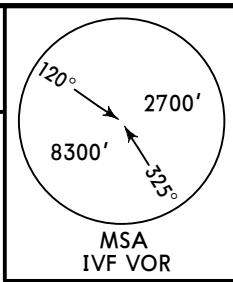


STAR	ROUTING
ILTUK 7N	On 241° track to D9.9 IVF, turn LEFT, 240° track to IVF, then according to approach chart.
SOLNU 7N	On 224° track to D8.2 IVF, turn LEFT, 222° track to IVF, then according to approach chart.

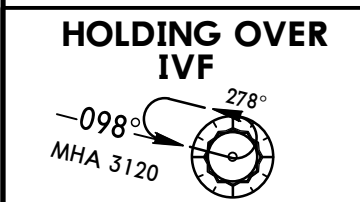
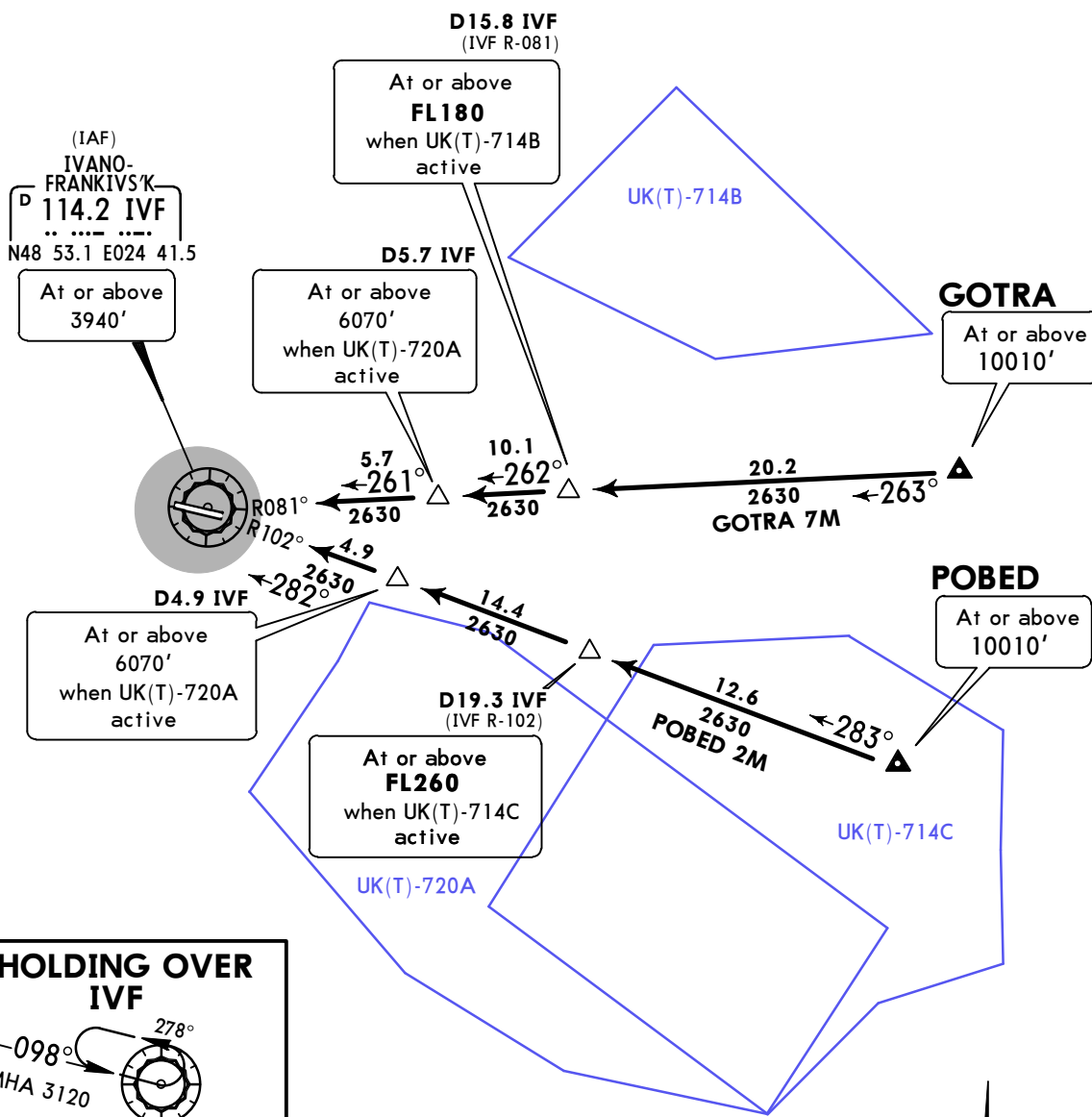
UKLI/IFO
IVANO-FRANKIVS'K

JEPPESEN **IVANO-FRANKIVS'K, UKRAINE**
 27 JAN 17 **(10-2B)** **Eff 2 Feb** **STAR**

Apt Elev **919'**
 Alt Set: hPa (MM on request)
 Trans level: By ATC Trans alt: 10010'



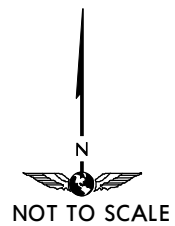
GOTRA 7M [GOTR7M]
POBED 2M [POBE2M]
RWY 10 ARRIVALS



FT/METER CONVERSION

QNH

10010'	-	3050m
6070'	-	1850m
3940'	-	1200m
3120'	-	950m
2630'	-	800m

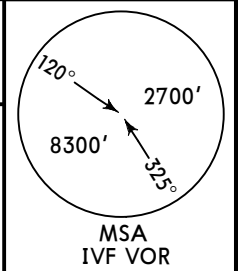


STAR	ROUTING
GOTRA 7M	On 263° track to D15.8 IVF, turn LEFT, 262° track to D5.7 IVF, turn LEFT, 261° track to IVF, then according to approach chart.
POBED 2M	On 283° track to D4.9 IVF, turn LEFT, 282° track to IVF, then according to approach chart.

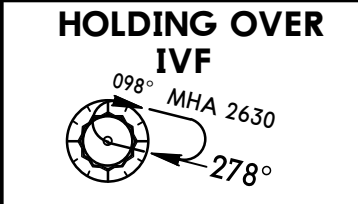
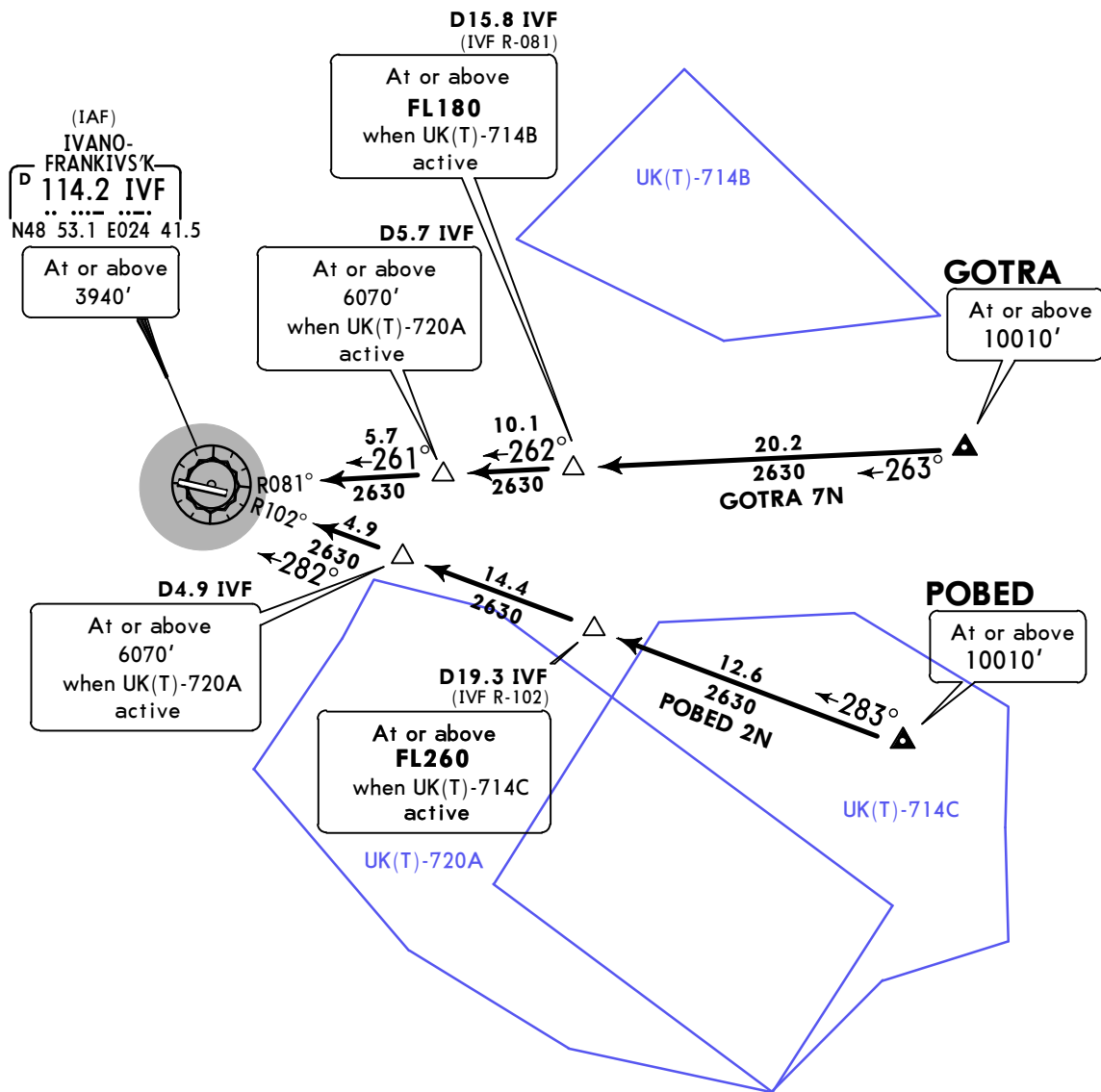
UKLI/IFO
IVANO-FRANKIVS'K

JEPPESEN **IVANO-FRANKIVS'K, UKRAINE**
 27 JAN 17 **(10-2C)** **Eff 2 Feb** **STAR**

Apt Elev **919'** Alt Set: hPa (MM on request)
 Trans level: By ATC Trans alt: 10010'

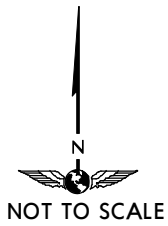


GOTRA 7N [GOTR7N]
POBED 2N [POBE2N]
RWY 28 ARRIVALS



FT/METER CONVERSION QNH

10010'	-	3050m
6070'	-	1850m
3940'	-	1200m
2630'	-	800m



STAR	ROUTING
GOTRA 7N	On 263° track to D15.8 IVF, turn LEFT, 262° track to D5.7 IVF, turn LEFT, 261° track to IVF, then according to approach chart.
POBED 2N	On 283° track to D4.9 IVF, turn LEFT, 282° track to IVF, then according to approach chart.

UKLI/IFO
IVANO-FRANKIVS'K



IVANO-FRANKIVS'K, UKRAINE

27 JAN 17

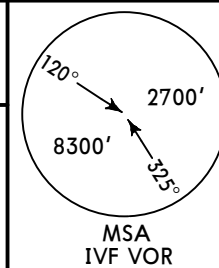
10-2D

Eff 2 Feb

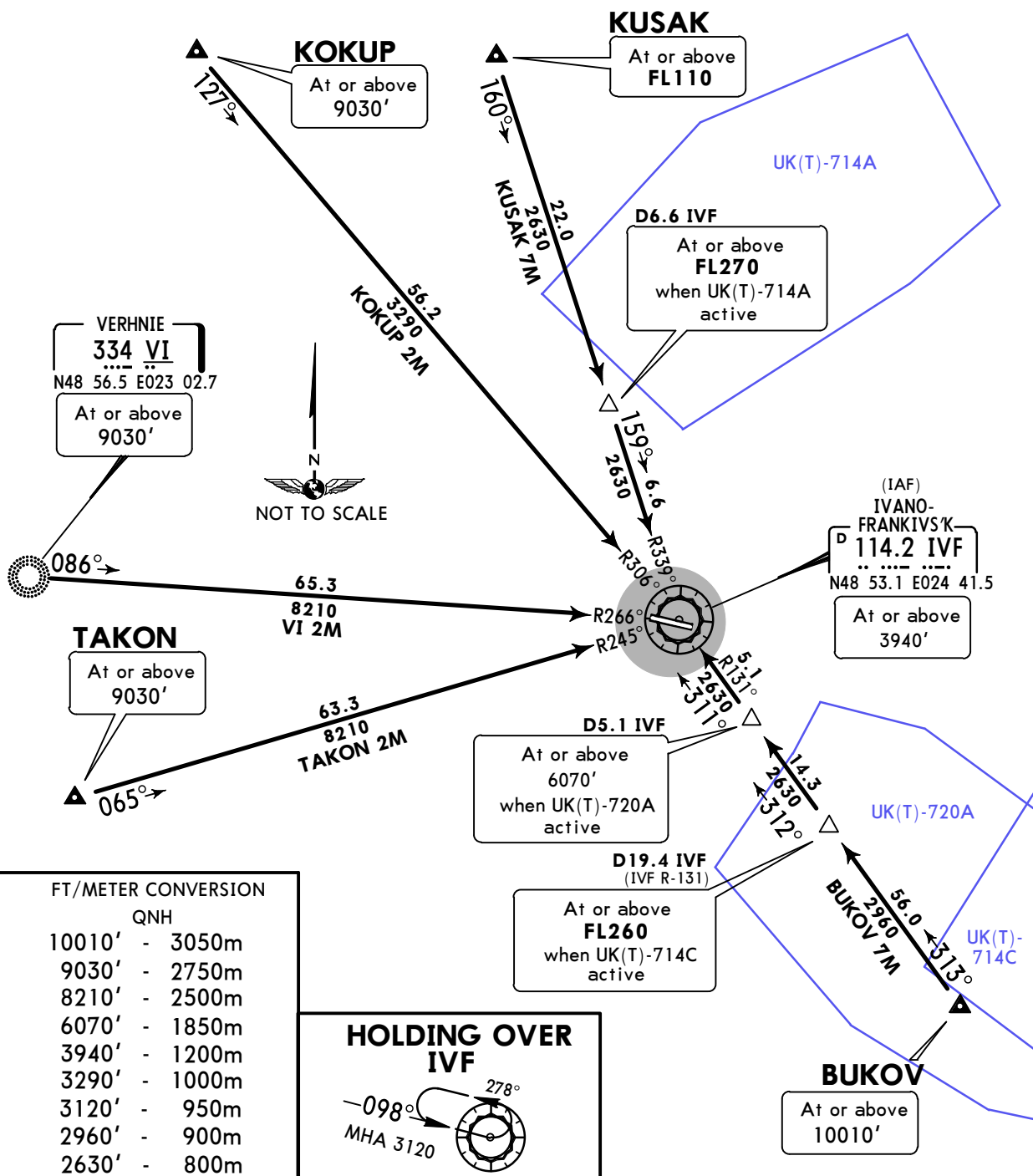
STAR

Apt Elev
919'

Alt Set: hPa (MM on request)
Trans level: By ATC Trans alt: 10010'



BUKOV 7M [BUK07M]
KOKUP 2M [KOKU2M]
KUSAK 7M [KUSA7M]
TAKON 2M [TAK02M]
VERHNIE 2M (VI 2M) [VI2M]
RWY 10 ARRIVALS



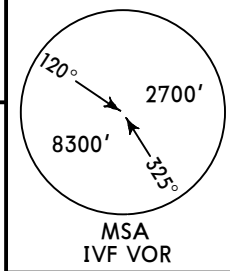
FT/METER CONVERSION

	QNH
10010'	3050m
9030'	2750m
8210'	2500m
6070'	1850m
3940'	1200m
3290'	1000m
3120'	950m
2960'	900m
2630'	800m

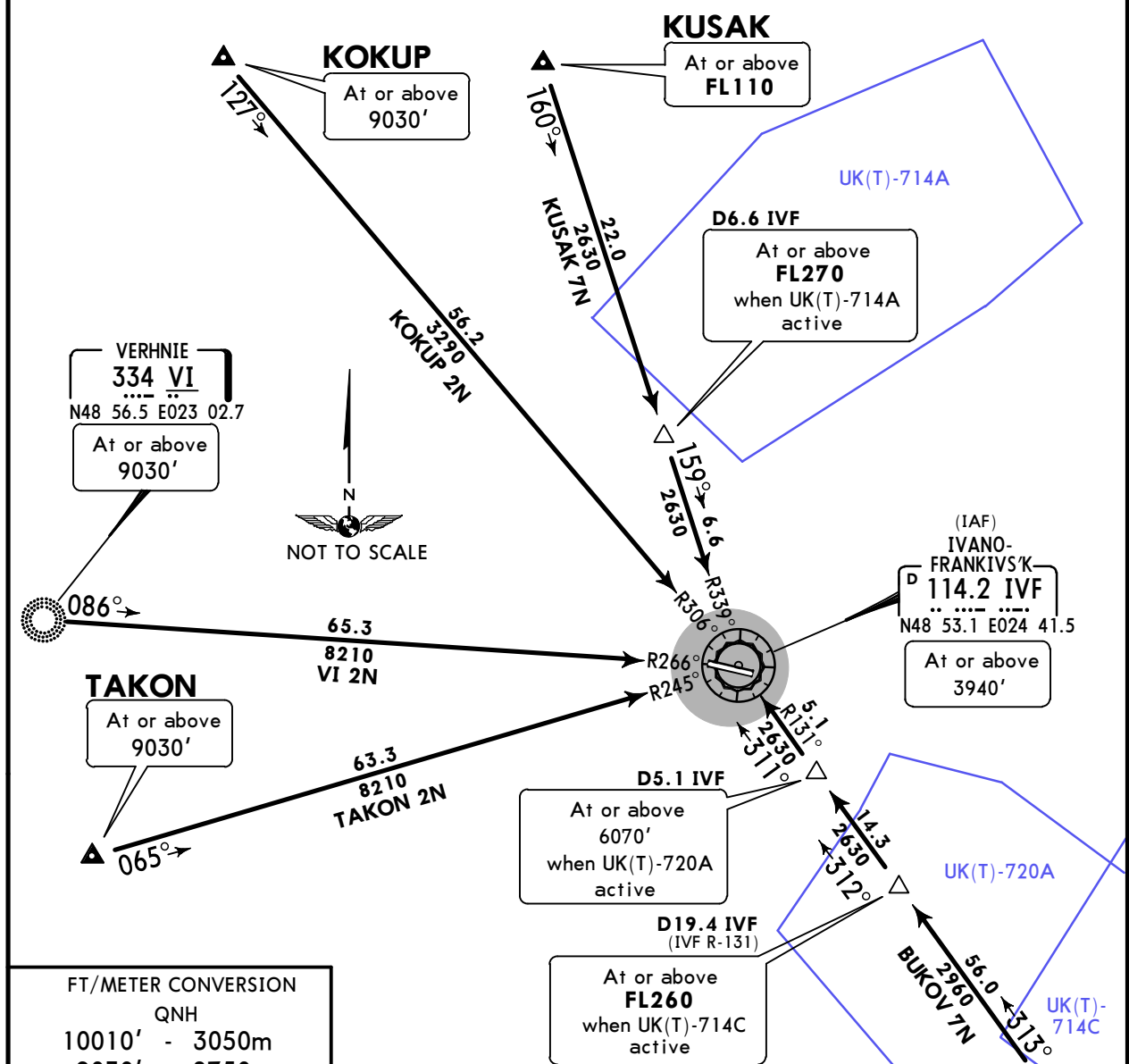
STAR	ROUTING
BUKOV 7M	On 313° track to D19.4 IVF, turn LEFT, 312° track to D5.1 IVF, turn LEFT, 311° track to IVF, then according to approach chart.
KOKUP 2M	On 127° track to IVF, then according to approach chart.
KUSAK 7M	On 160° track to D6.6 IVF, turn LEFT, 159° track to IVF, then according to approach chart.
TAKON 2M	On 065° track to IVF, then according to approach chart.
VI 2M	On 086° track to IVF, then according to approach chart.

UKLI/IFO
IVANO-FRANKIVS'K

Apt Elev **919'** Alt Set: hPa (MM on request)
 Trans level: By ATC Trans alt: 10010'

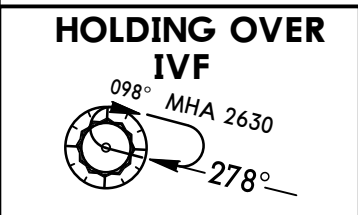


BUKOV 7N [BUK07N]
KOKUP 2N [KOKU2N]
KUSAK 7N [KUSA7N]
TAKON 2N [TAKO2N]
VERHNIE 2N (VI 2N) [VI2N]
RWY 28 ARRIVALS



FT/METER CONVERSION

QNH	
10010'	- 3050m
9030'	- 2750m
8210'	- 2500m
6070'	- 1850m
3940'	- 1200m
3290'	- 1000m
2960'	- 900m
2630'	- 800m



STAR	ROUTING
BUKOV 7N	On 313° track to D19.4 IVF, turn LEFT, 312° track to D5.1 IVF, turn LEFT, 311° track to IVF, then according to approach chart.
KOKUP 2N	On 127° track to IVF, then according to approach chart.
KUSAK 7N	On 160° track to D6.6 IVF, turn LEFT, 159° track to IVF, then according to approach chart.
TAKON 2N	On 065° track to IVF, then according to approach chart.
VI 2N	On 086° track to IVF, then according to approach chart.

UKLI/IFO
IVANO-FRANKIVS'K

JEPPESEN IVANO-FRANKIVS'K, UKRAINE

27 JAN 17

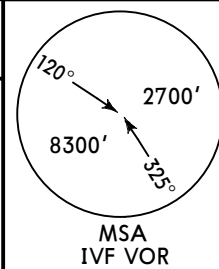
10-3

Eff 2 Feb

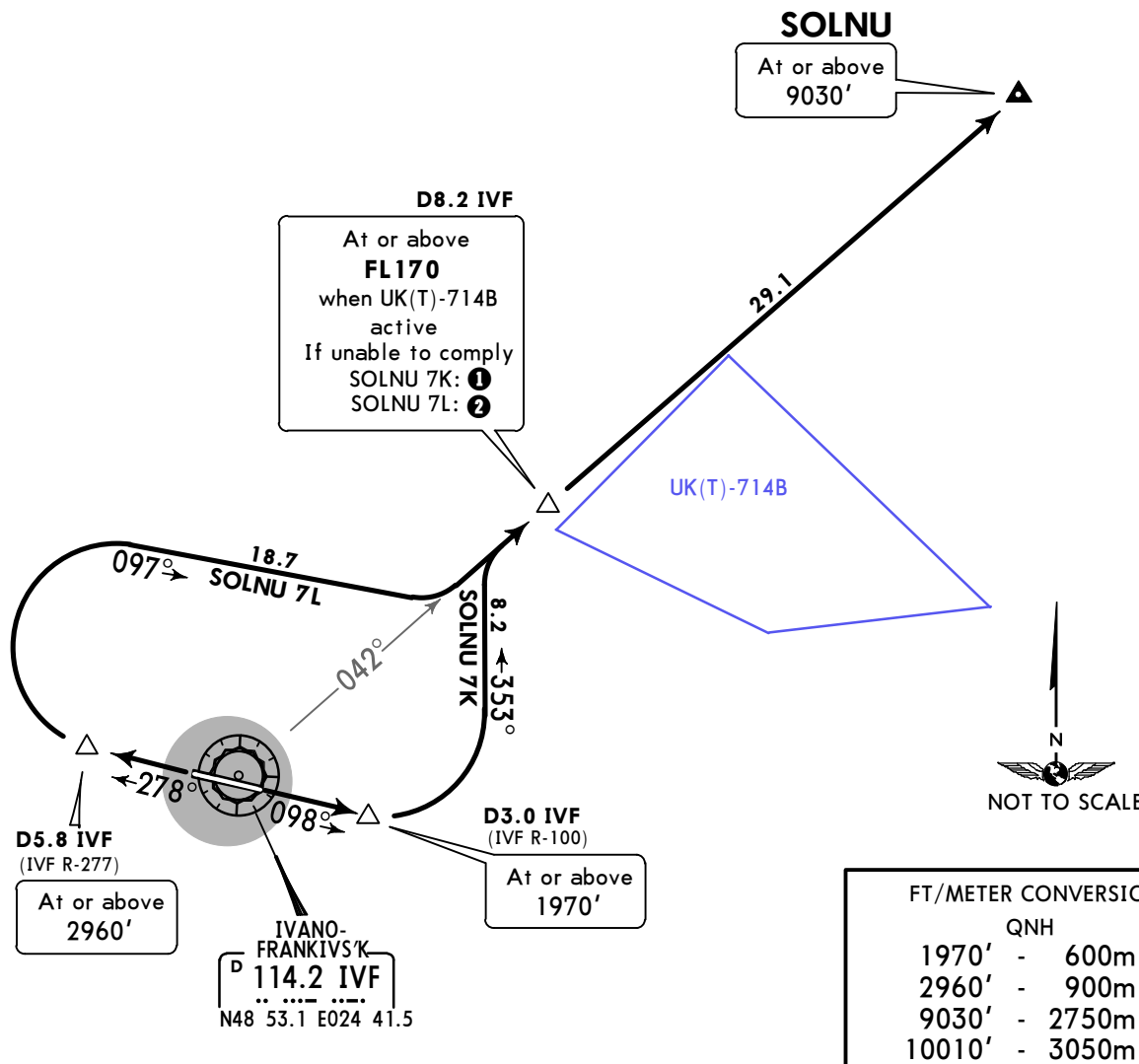
SID

Apt Elev
919'

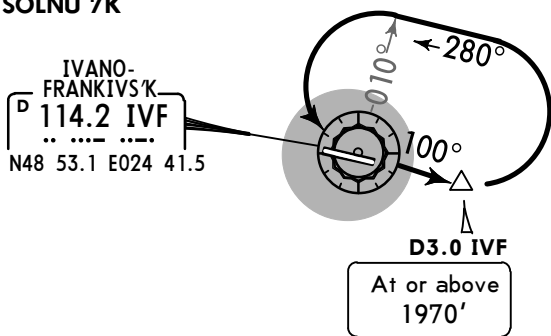
Trans level: By ATC Trans alt: 10010'



SOLNU 7K [SOLN7K]
SOLNU 7L [SOLN7L]
DEPARTURES

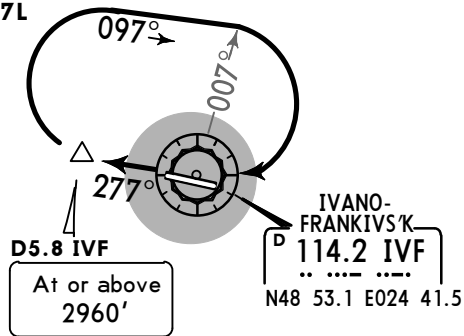


① SOLNU 7K



Report to ATC, then after take-off climb to 1970', turn LEFT, 280° track, after intercepting IVF R-010 turn LEFT, IVF R-100 to D3.0 IVF, turn LEFT, 353° track, turn RIGHT, intercept IVF R-042 to SOLNU climbing to FL170 or above at D8.2 IVF.

② SOLNU 7L



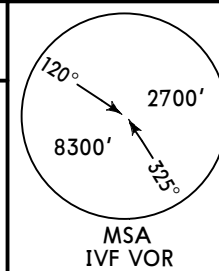
Report to ATC, then after take-off climb to 2960', turn RIGHT, 097° track, after intercepting IVF R-007 turn RIGHT, IVF R-277 to D5.8 IVF, turn RIGHT, 097° track, turn LEFT, intercept IVF R-042 to SOLNU climbing to FL170 or above at D8.2 IVF.

SID	RWY	ROUTING
SOLNU 7K	10	Climb on 098° track to D3.0 IVF, turn LEFT, 353° track, turn RIGHT, intercept IVF R-042 to SOLNU.
SOLNU 7L	28	Climb on 278° track to D5.8 IVF, turn RIGHT, 097° track, turn LEFT, intercept IVF R-042 to SOLNU.

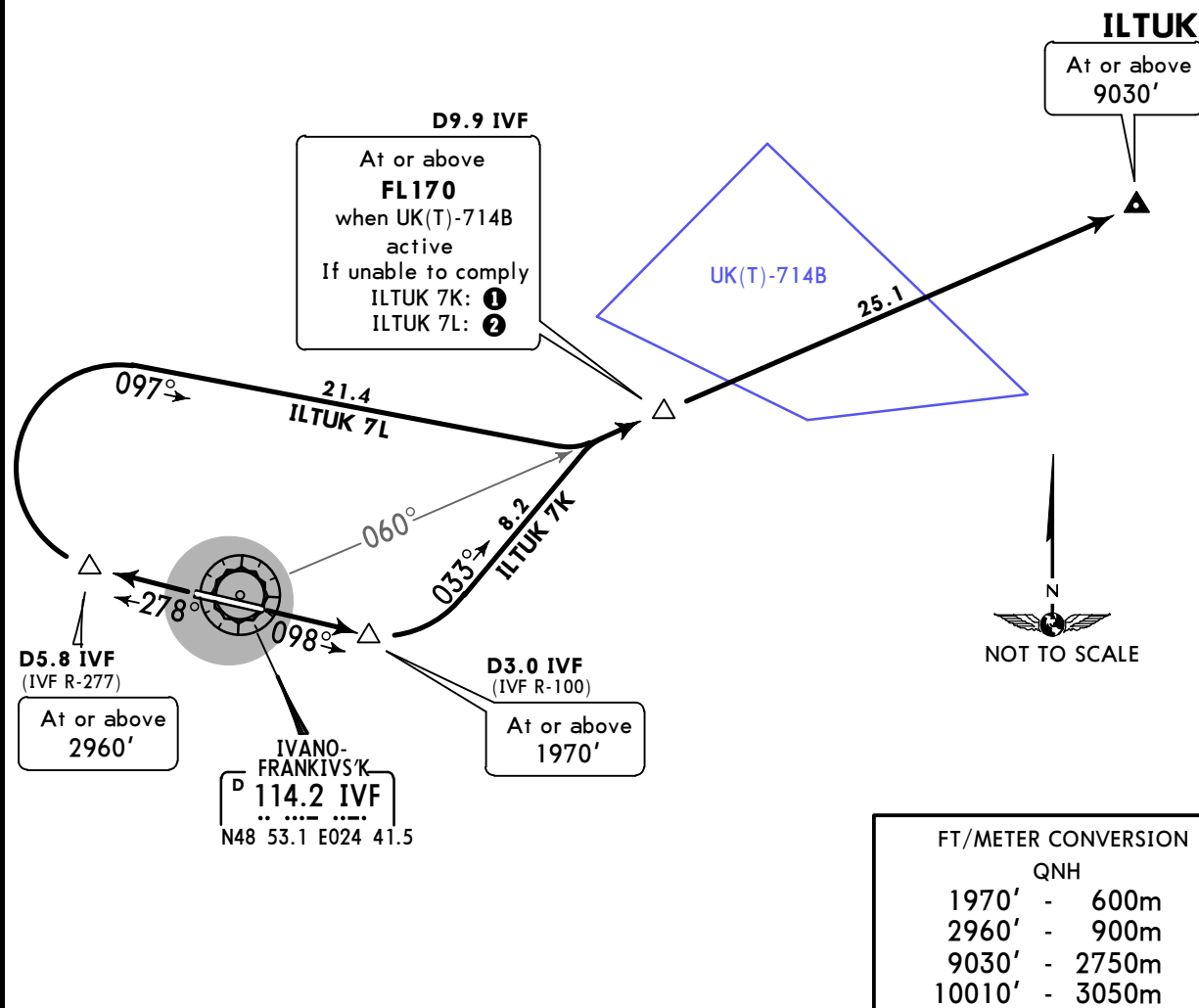
UKLI/IFO
IVANO-FRANKIVS'K

JEPPESEN IVANO-FRANKIVS'K, UKRAINE
27 JAN 17 (10-3A) Eff 2 Feb **SID**

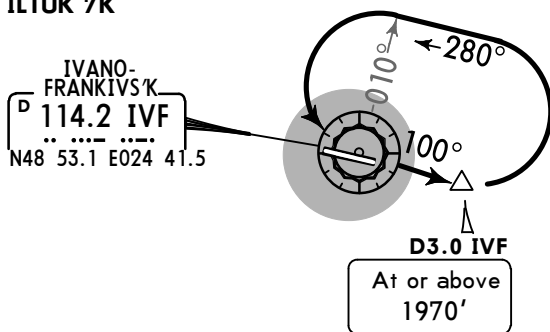
Apt Elev 919' Trans level: By ATC Trans alt: 10010'



**ILTUK 7K [ILTU7K]
ILTUK 7L [ILTU7L]
DEPARTURES**

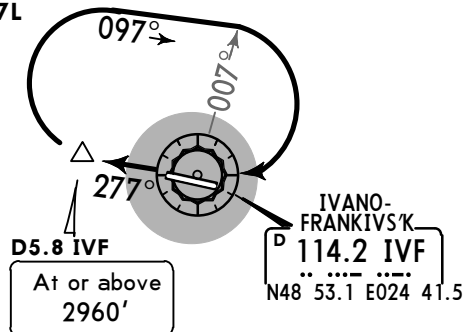


① ILTUK 7K



Report to ATC, then after take-off climb to 1970', turn LEFT, 280° track, after intercepting IVF R-010 turn LEFT, IVF R-100 to D3.0 IVF, turn LEFT, 033° track, turn RIGHT, intercept IVF R-060 to ILTUK climbing to FL170 or above at D9.9 IVF.

② ILTUK 7L



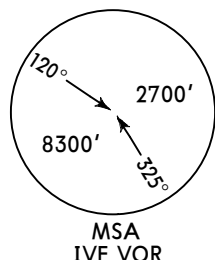
Report to ATC, then after take-off climb to 2960', turn RIGHT, 097° track, after intercepting IVF R-007 turn RIGHT, IVF R-277 to D5.8 IVF, turn RIGHT, 097° track, turn LEFT, intercept IVF R-060 to ILTUK climbing to FL170 or above at D9.9 IVF.

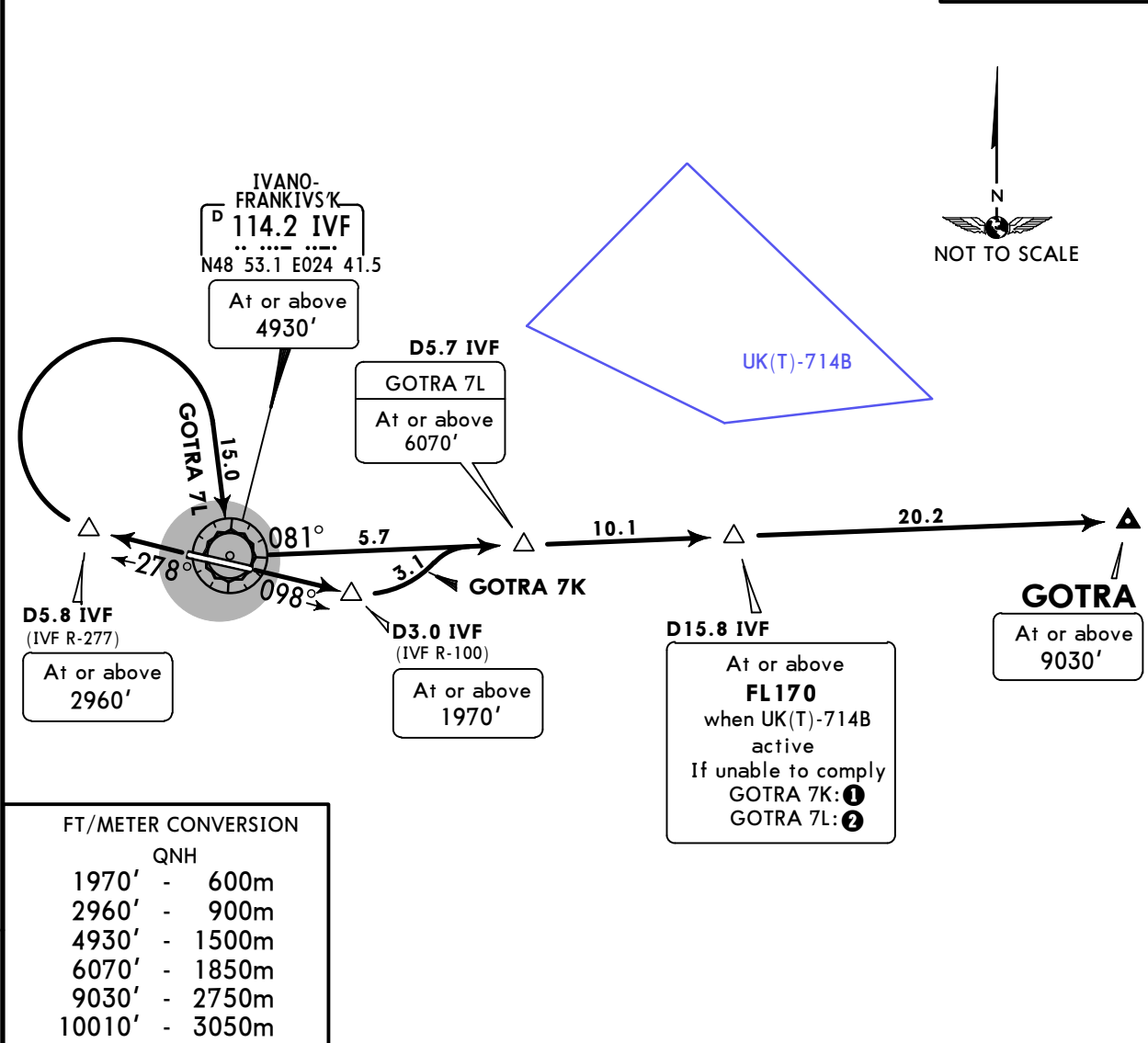
SID	RWY	ROUTING
ILTUK 7K	10	Climb on 098° track to D3.0 IVF, turn LEFT, 033° track, turn RIGHT, intercept IVF R-060 to ILTUK.
ILTUK 7L	28	Climb on 278° track to D5.8 IVF, turn RIGHT, 097° track, turn LEFT, intercept IVF R-060 to ILTUK.

UKLI/IFO
IVANO-FRANKIVS'K

JEPPESEN
27 JAN 17 (10-3B)

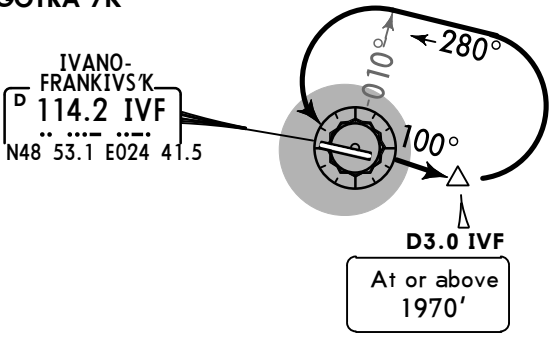
IVANO-FRANKIVS'K, UKRAINE
Eff 2 Feb **SID**

Apt Elev 919'	Trans level: By ATC Trans alt: 10010'	<h2 style="margin: 0;">GOTRA 7K [GOTR7K]</h2> <h2 style="margin: 0;">GOTRA 7L [GOTR7L]</h2> <h3 style="margin: 0;">DEPARTURES</h3>	 <p style="margin: 0;">MSA IVF VOR</p>
-------------------------	------------------------------------------	------------------------------------------------------------------------------------------------------------------------------------	-------------------------------------------------------------------------------------------------------------------------------



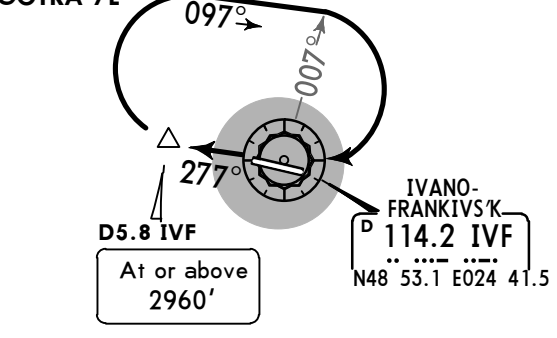
FT/METER CONVERSION	
QNH	
1970'	600m
2960'	900m
4930'	1500m
6070'	1850m
9030'	2750m
10010'	3050m

① GOTRA 7K



Report to ATC, then after take-off climb to 1970', turn LEFT, 280° track, after intercepting IVF R-010 turn LEFT, IVF R-100 to D3.0 IVF, turn LEFT, intercept IVF R-081 to GOTRA climbing to FL170 or above at D15.8 IVF.

② GOTRA 7L



Report to ATC, then after take-off climb to 2960', turn RIGHT, 097° track, after intercepting IVF R-007 turn RIGHT, IVF R-277 to D5.8 IVF, turn RIGHT to IVF, turn LEFT, IVF R-081 to GOTRA climbing to FL170 or above at D15.8 IVF.

SID	RWY	ROUTING
GOTRA 7K	10	Climb on 098° track to D3.0 IVF, turn LEFT, intercept IVF R-081 to GOTRA.
GOTRA 7L	28	Climb on 278° track to D5.8 IVF, turn RIGHT to IVF, turn LEFT, IVF R-081 to GOTRA.

UKLI/IFO
IVANO-FRANKIVS'K

JEPPESEN IVANO-FRANKIVS'K, UKRAINE

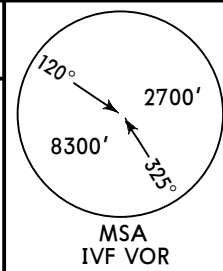
27 JAN 17

10-3C

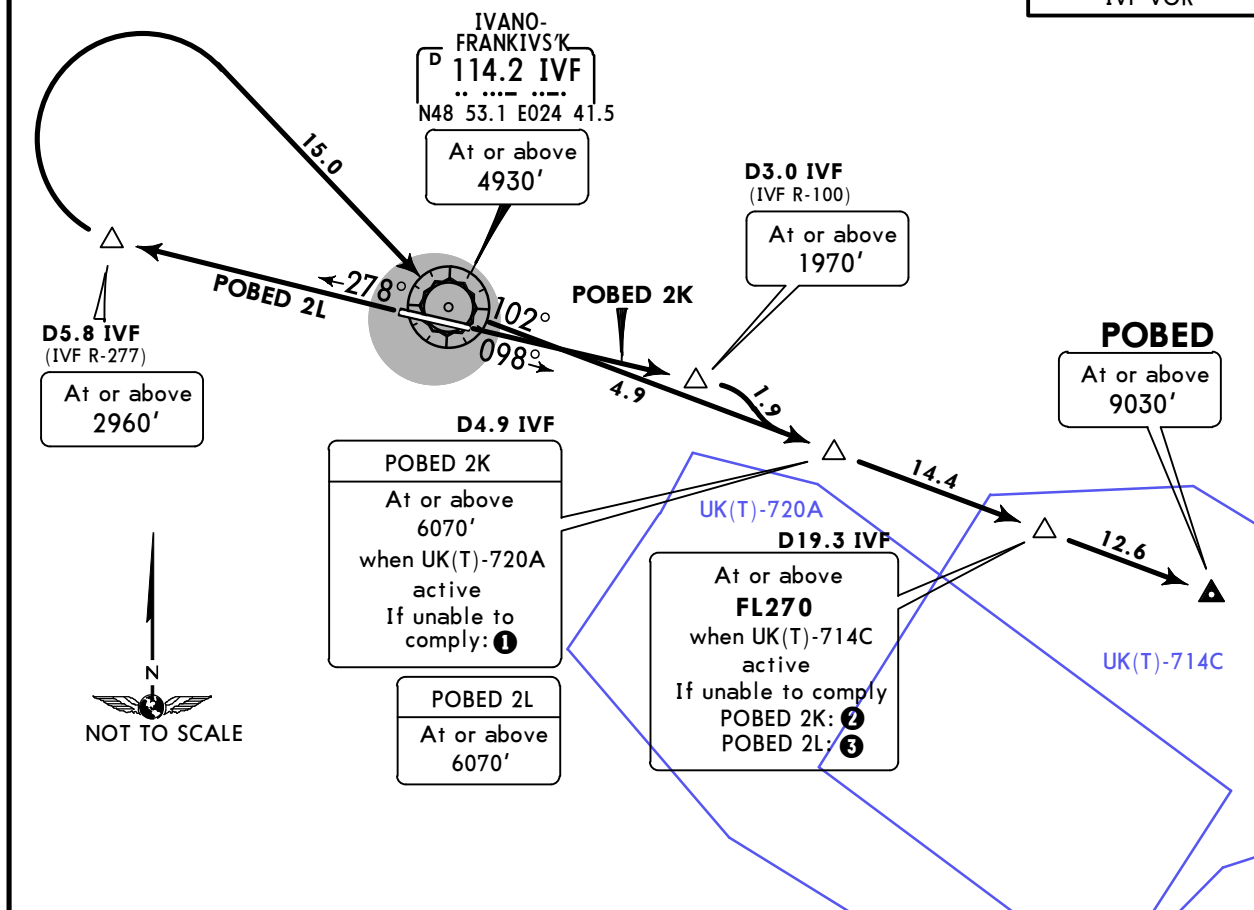
Eff 2 Feb

SID

Apt Elev 919' Trans level: By ATC Trans alt: 10010'

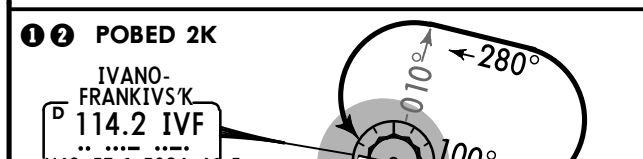


**POBED 2K [POBE2K]
POBED 2L [POBE2L]
DEPARTURES**



FT/METER CONVERSION

FT	METER
1970'	600m
2960'	900m
4930'	1500m
6070'	1850m
9030'	2750m
10010'	3050m



- ❶ Report to ATC, then after take-off climb to 1970', turn LEFT, 280° track, after intercepting IVF R-010 turn LEFT, IVF R-100 to D3.0 IVF, turn RIGHT, intercept IVF R-102 to POBED climbing to 6070' or above at D4.9 IVF.
- ❷ Report to ATC, then after take-off climb to 1970', turn LEFT, 280° track, after intercepting IVF R-010 turn LEFT, IVF R-100 to D3.0 IVF, turn RIGHT, intercept IVF R-102 to POBED climbing to FL270 or above at D19.3 IVF.



- Report to ATC, then after take-off climb to 2960', turn RIGHT, 097° track, after intercepting IVF R-007 turn RIGHT, IVF R-277 to D5.8 IVF, turn RIGHT to IVF, turn LEFT, IVF R-102 to POBED climbing to FL270 or above at D19.3 IVF.

SID	RWY	ROUTING
POBED 2K	10	Climb on 098° track to D3.0 IVF, turn RIGHT, intercept IVF R-102 to POBED.
POBED 2L	28	Climb on 278° track to D5.8 IVF, turn RIGHT to IVF, turn LEFT, IVF R-102 to POBED.

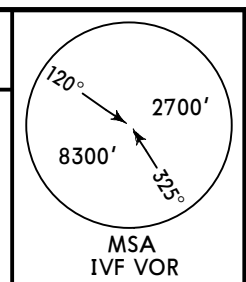
CHANGES: Training areas idents revised.

UKLI/IFO
IVANO-FRANKIVS'K

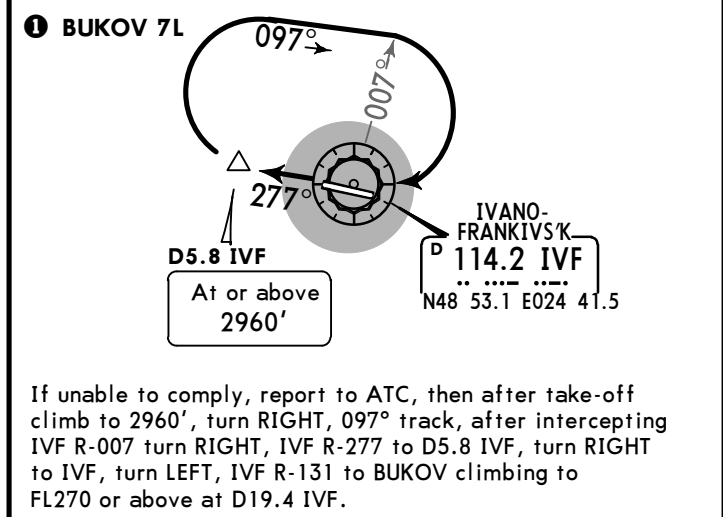
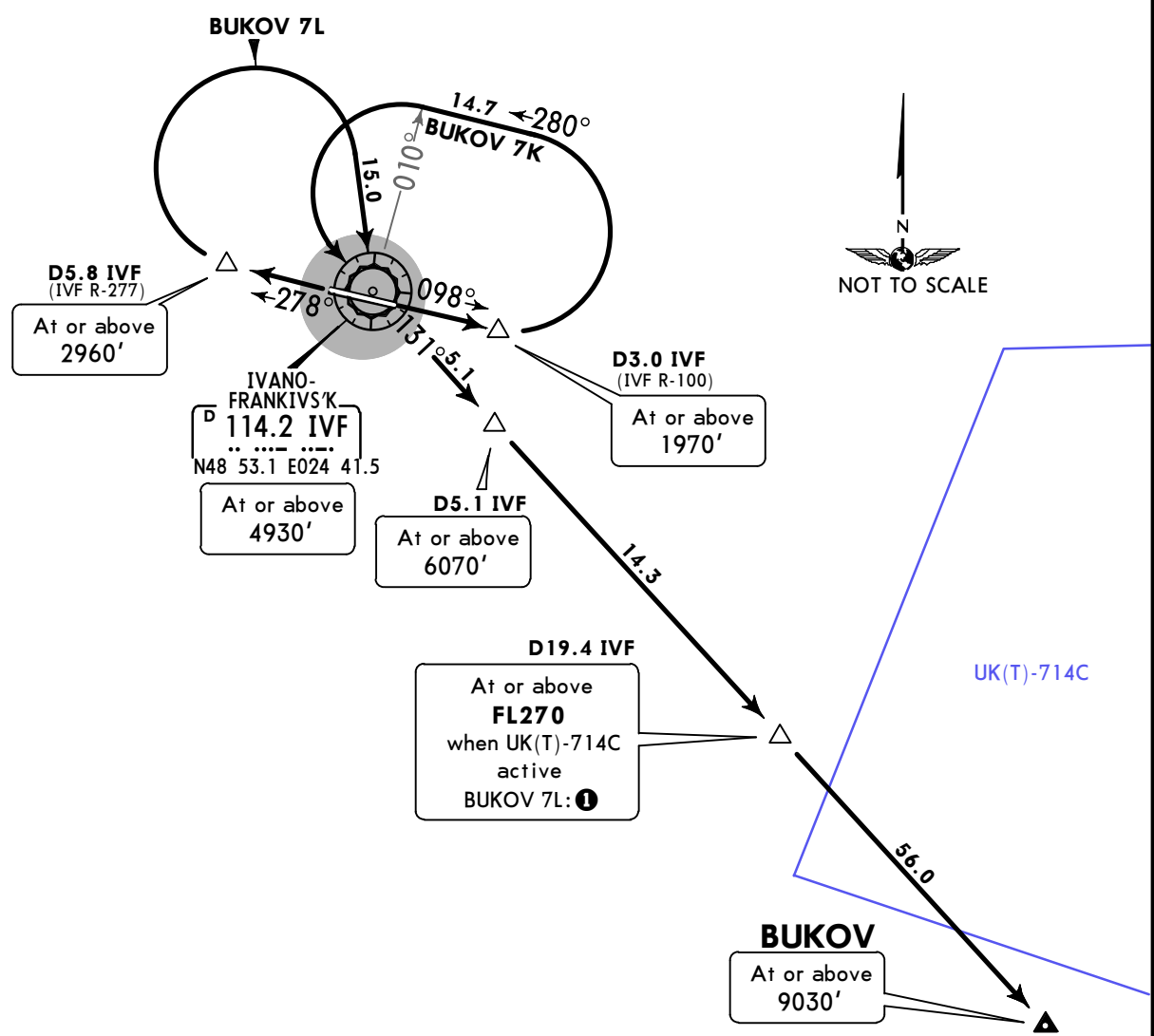


IVANO-FRANKIVS'K, UKRAINE
27 JAN 17 (10-3D) Eff 2 Feb SID

Apt Elev 919' Trans level: By ATC Trans alt: 10010'



BUKOV 7K [BUK07K]
BUKOV 7L [BUK07L]
DEPARTURES



FT/METER CONVERSION	
QNH	
1970'	600m
2960'	900m
4930'	1500m
6070'	1850m
9030'	2750m
10010'	3050m

SID	RWY	ROUTING
BUKOV 7K	10	Climb on 098° track to D3.0 IVF, turn LEFT, 280° track, when passing IVF R-010 turn LEFT to IVF, turn RIGHT, IVF R-131 to BUKOV.
BUKOV 7L	28	Climb on 278° track to D5.8 IVF, turn RIGHT to IVF, turn LEFT, IVF R-131 to BUKOV.

CHANGES: Training area ident revised.

UKLI/IFO
IVANO-FRANKIVS'K

JEPPESEN IVANO-FRANKIVS'K, UKRAINE

27 JAN 17

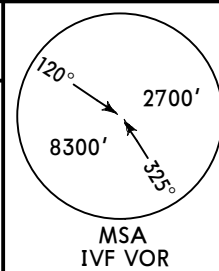
10-3E

Eff 2 Feb

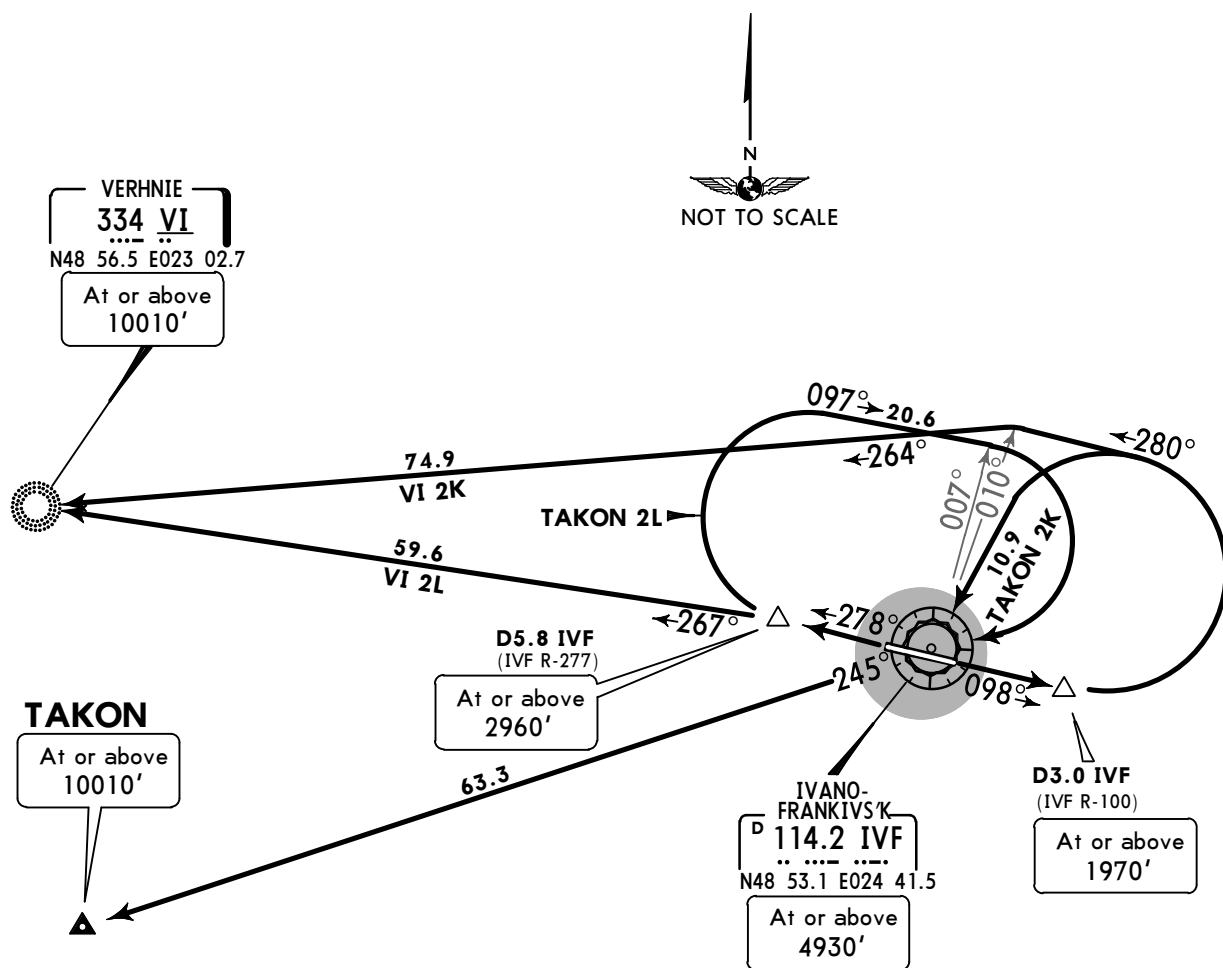
SID

Apt Elev
919'

Trans level: By ATC Trans alt: 10010'



TAKON 2K [TAK02K]
TAKON 2L [TAK02L]
VERHNIE 2K (VI 2K) [VI2K]
VERHNIE 2L (VI 2L) [VI2L]
DEPARTURES



TAKON 2K

This SID requires a minimum climb gradient of 4.9% up to 4930'.

Gnd speed-KT	75	100	150	200	250	300
4.9% V/V (fpm)	372	496	744	992	1241	1489

If unable to comply, advise ATC.

FT/METER CONVERSION

QNH	
1970'	- 600m
2960'	- 900m
4930'	- 1500m
10010'	- 3050m

SID	RWY	ROUTING
TAKON 2K	10	Climb on 098° track to D3.0 IVF, turn LEFT to IVF, turn RIGHT, IVF R-245 to TAKON.
TAKON 2L	28	Climb on 278° track to D5.8 IVF, turn RIGHT, 097° track, when passing IVF R-007 turn RIGHT to IVF, IVF R-245 to TAKON.
VI 2K	10	Climb on 098° track to D3.0 IVF, turn LEFT, 280° track, when passing IVF R-010, turn LEFT, 264° bearing to VI.
VI 2L	28	Climb on 278° track to D5.8 IVF, turn LEFT, 267° bearing to VI.

UKLI/IFO
IVANO-FRANKIVS'K

JEPPESEN IVANO-FRANKIVS'K, UKRAINE

27 JAN 17

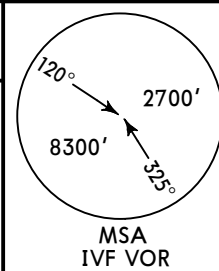
10-3F

Eff 2 Feb

SID

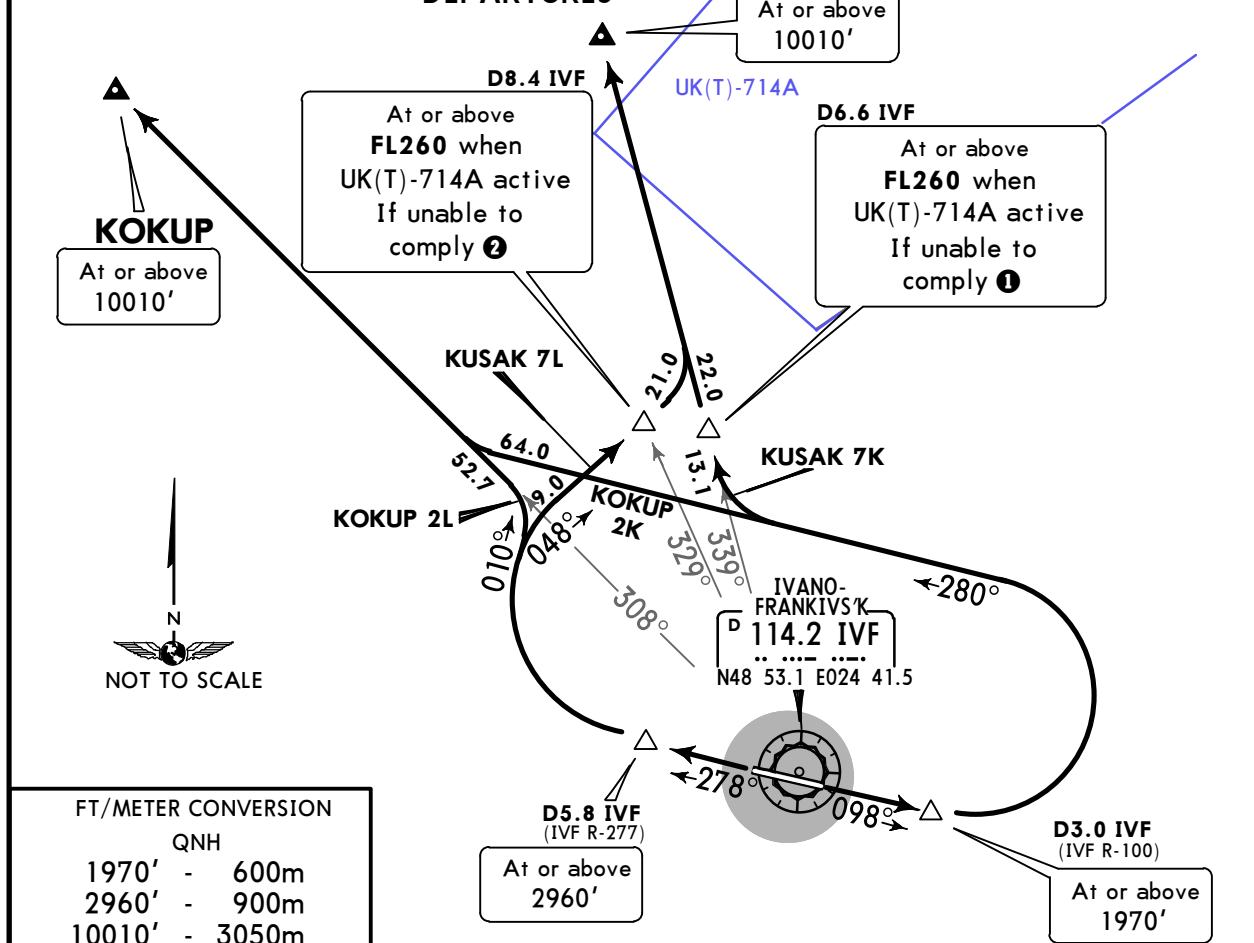
Apt Elev
919'

Trans level: By ATC Trans alt: 10010'



KOKUP 2K [KOKU2K]
KOKUP 2L [KOKU2L]
KUSAK 7K [KUSA7K]
KUSAK 7L [KUSA7L]

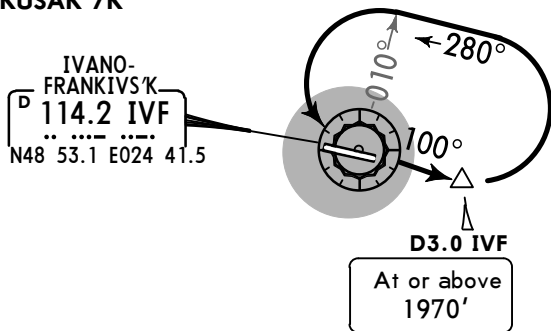
DEPARTURES



FT/METER CONVERSION

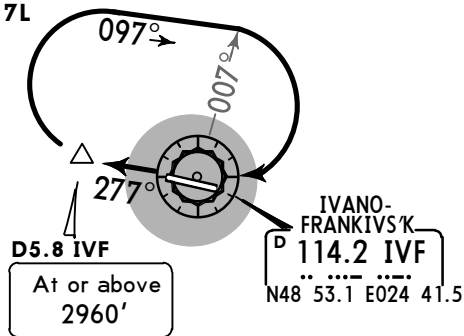
QNH	
1970'	- 600m
2960'	- 900m
10010'	- 3050m

① KUSAK 7K



Report to ATC, then after take-off climb to 1970', turn LEFT, 280° track, after intercepting IVF R-010 turn LEFT, IVF R-100 to D3.0 IVF, turn LEFT, 280° track, turn RIGHT, intercept IVF R-339 to KUSAK climbing to FL260 or above at D6.6 IVF.

② KUSAK 7L



Report to ATC, then after take-off climb to 2960', turn RIGHT, 097° track, after intercepting IVF R-007 turn RIGHT, IVF R-277 to D5.8 IVF, turn RIGHT, 048° track, turn LEFT, intercept IVF R-339 to KUSAK climbing to FL260 or above at D8.4 IVF.

SID	RWY	ROUTING
KOKUP 2K	10	Climb on 098° track to D3.0 IVF, turn LEFT, 280° track, turn RIGHT, intercept IVF R-308 to KOKUP.
KOKUP 2L	28	Climb on 278° track to D5.8 IVF, turn RIGHT, 010° track, turn LEFT, intercept IVF R-308 to KOKUP.
KUSAK 7K	10	Climb on 098° track to D3.0 IVF, turn LEFT, 280° track, turn RIGHT, intercept IVF R-339 to KUSAK.
KUSAK 7L	28	Climb on 278° track to D5.8 IVF, turn RIGHT, 048° track, turn LEFT, intercept IVF R-339 to KUSAK.

UKLI/IFO
IVANO-FRANKIVS'K

JEPPESEN **IVANO-FRANKIVS'K, UKRAINE**
29 JAN 16 **10-4** **Eff 4 Feb** **SID**

NOISE ABATEMENT

Noise abatement procedures prescribe special departure procedures mandatory for cockpit crews at any time if safety reasons do not demand otherwise.

DEPARTURES

1. Initial take-off and climb 450m (1500') above aerodrome level:
 - Maintain take-off power of all engines;
 - Retract gears;
 - Climb with take-off wing configuration (flaps 10-30°) in accordance with manual;
 - Keep IAS of $V_2 + 20-40\text{km/h}$ (10-20KT) and maximum climb angle regarding body angle restriction.

2. At 450m (1500'):
 - Reduce to rated power;
 - Climb to 900m (3000') maintaining rated power and IAS of $V_2 + 20-40\text{km/h}$ (10-20KT).

3. At 900m (3000'):
 - Reduce rate of climb;
 - Start climb acceleration to zero flaps speed;
 - Retract flaps to flight wing configuration.

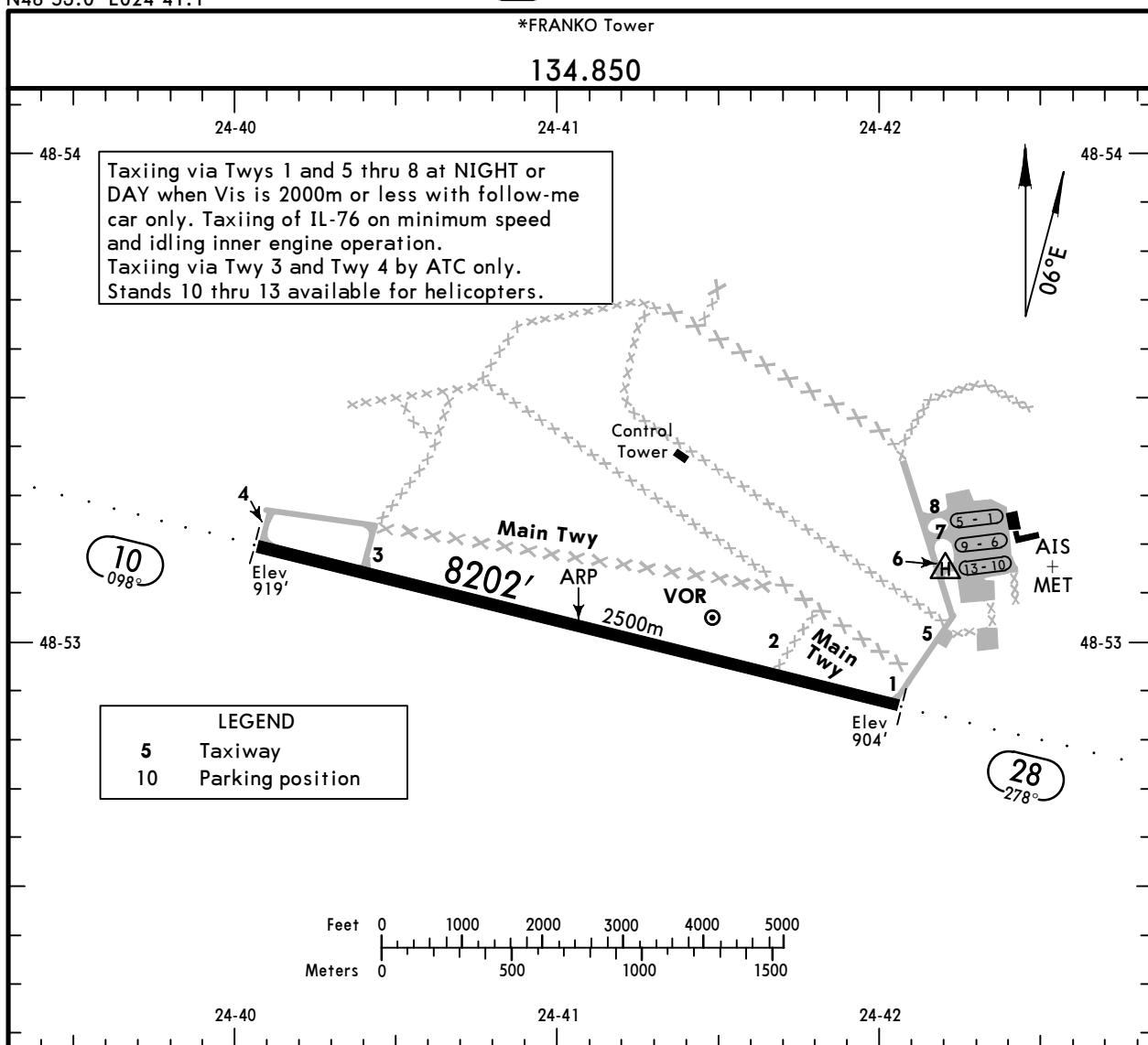
UKLI/IFO

Apt Elev **919'**
N48 53.0 E024 41.1

JEPPESEN IVANO-FRANKIVS'K, UKRAINE

29 JAN 16 **10-9** Eff 4 Feb

IVANO-FRANKIVS'K



ADDITIONAL RUNWAY INFORMATION

RWY					USABLE LENGTHS			WIDTH
					LANDING BEYOND		TAKE-OFF	
				Threshold	Glide Slope			
10 28	RL (60m)	ALS	PAPI-L (angle 3.0°)	RVR	8120' 2475m	7026' 2142m 7087' 2160m	8120' 2475m	144' 44m

JAR-OPS		TAKE-OFF 1	
LVP must be in force		All Rwys	
	RCLM (DAY only) or RL	RCLM (DAY only) or RL	NIL (DAY only)
A			
B	250m	400m	500m
C			
D	300m		

1 Operators applying U.S. Ops Specs: CL required below 300m.

UKLI/IFO

JEPPESEN

Standard

31 MAR 17

(10-9S)

IVANO-FRANKIVS'K, UKRAINE
IVANO-FRANKIVS'K

STRAIGHT-IN RWY		A	B	C	D
10	ILS	1119'(200') R1000m	1119'(200') R1000m	1119'(200') R1000m	1126'(207') R1000m
	ALS out	R1200m	R1200m	R1200m	R1200m
	LOC ①	1240'(321') R1300m	1240'(321') R1300m	1240'(321') R1300m	1240'(321') R1300m
	with D2.4	R1500m	R1500m	R1500m	R1500m
	ALS out	R1500m	R1500m	R1500m	R1500m
	LOC ①	1690'(771') R1500m	1690'(771') R1500m	1690'(771') R2400m	1690'(771') R2400m
w/o D2.4	R1500m	R1500m	R2400m	R2400m	
VOR ①	1280'(361') R1500m	1280'(361') R1500m	1280'(361') R1500m	1280'(361') R1500m	
with D3.1	R1500m	R1500m	R1500m	R1500m	
ALS out	R1500m	R1500m	R1700m	R1700m	
VOR ①	1730'(811') R1500m	1730'(811') R1500m	1730'(811') R2400m	1730'(811') R2400m	
w/o D3.1	R1500m	R1500m	R2400m	R2400m	
28	ILS	1104'(200') R1000m	1104'(200') R1000m	1104'(200') R1000m	1107'(203') R1000m
	ALS out	R1200m	R1200m	R1200m	R1200m
	LOC ①	1270'(366') R1500m	1270'(366') R1500m	1270'(366') R1500m	1270'(366') R1500m
	ALS out	R1500m	R1500m	R1700m	R1700m
	VOR ①	1270'(366') R1500m	1270'(366') R1500m	1270'(366') R1500m	1270'(366') R1500m
	ALS out	R1500m	R1500m	R1700m	R1700m
	NDB ①	1300'(396') R1500m	1300'(396') R1500m	1300'(396') R1600m	1300'(396') R1600m
	ALS out	R1500m	R1500m	R1800m	R1800m

① Continuous Descent Final Approach.

CIRCLE-TO-LAND	100 KT	135 KT	180 KT	205 KT
After apch to Rwy 10	1710'(791') ②	1780'(861')	1870'(951')	1870'(951')
After apch to Rwy 28	1330'(411')	1780'(861')	1870'(951')	1870'(951')
	V1500m	V1600m	V2400m	V3600m

② or higher minimums of preceding straight-in approach.

TAKE-OFF RWY 10, 28

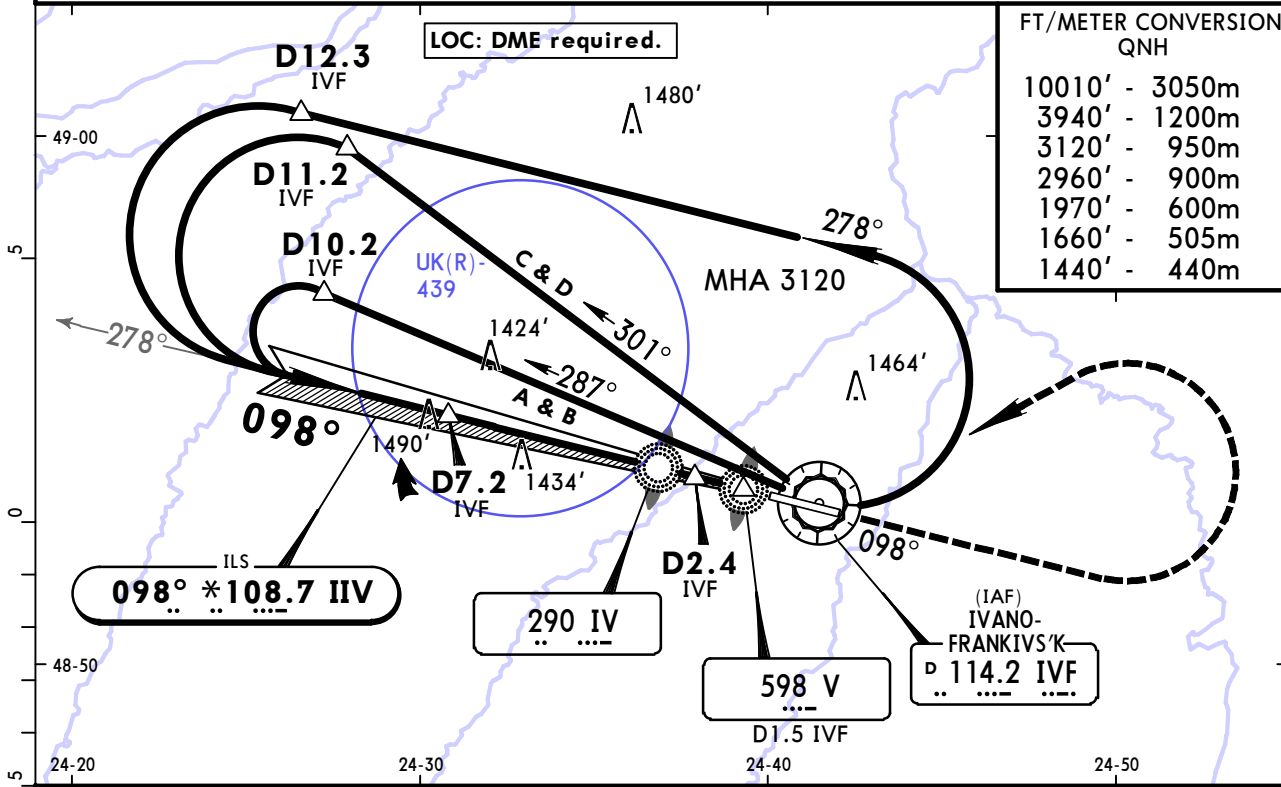
Low Visibility Take-off		Day: RL or RCLM Night: RL		Adequate vis ref (Day only)
A				
B				
C	R300m	400m		500m
D				

UKLI/IFO
IVANO-FRANKIVS'K

JEPPESEN 29 JAN 16 (11-1) **Eff 4 Feb**

IVANO-FRANKIVS'K, UKRAINE
ILS or LOC Rwy 10

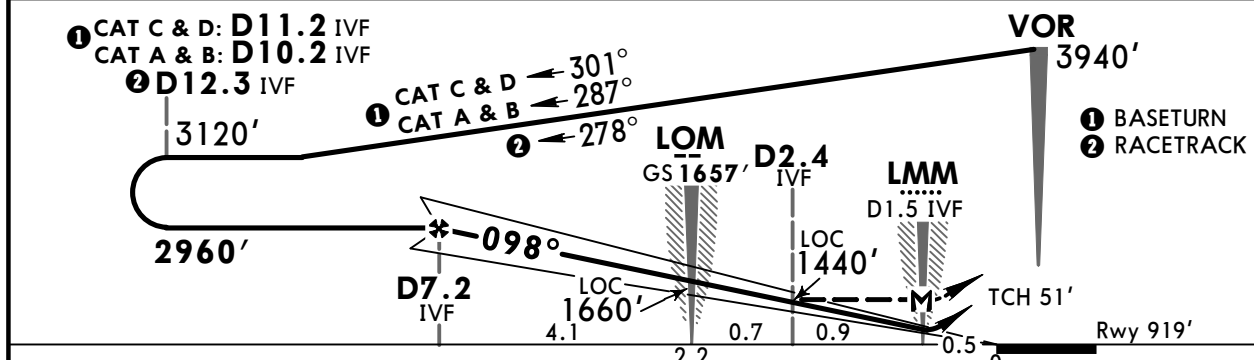
*FRANKO Radar				*FRANKO Tower	
127.3				134.850	
LOC IIV *108.7	Final Apch Crs 098°	GS LOM 1657' (738')	ILS DA(H) Refer to Minimums	Apt Elev 919'	
MISSED APCH: Climb on 098° to 1970', turn LEFT climbing to 3940' to VOR, then according to chart.					
Alt Set: hPa		Rwy Elev: 33 hPa	Trans level: By ATC		Trans alt: 10010'



FT/METER CONVERSION QNH

10010'	3050m
3940'	1200m
3120'	950m
2960'	900m
1970'	600m
1660'	505m
1440'	440m

LOC (GS out)	IVF DME	7.0	5.9	4.9	3.8	2.7	1.6
	ALTITUDE	2900'	2560'	2220'	1880'	1530'	1190'



Gnd speed-Kts	70	90	100	120	140	160	ALS PAPI	1970' on 098°
ILS GS or LOC Descent Angle 3.00°	372	478	531	637	743	849		
MAP at LMM/D1.5 IVF								

JAR-OPS		STRAIGHT-IN LANDING RWY 10			CIRCLE-TO-LAND			
ILS DA(H) ABC: 1119' (200') D: 1126' (207')		LOC (GS out) with D2.4 IVF MDA(H) 1240' (321)		w/o D2.4 IVF MDA(H) 1690' (771')				
FULL ALS out		ALS out		ALS out				
A	RVR 800m RVR 1000m	RVR 1300m	RVR 1500m	RVR 1500m		Max Kts 100	MDA(H) 1710' (791')	VIS 1500m
B		RVR 1400m				135	1780' (861')	1600m
C		RVR 1600m	RVR 1800m			180	1870' (951')	2400m
D		RVR 1800m	RVR 2000m	RVR 2000m		205	1870' (951')	3600m

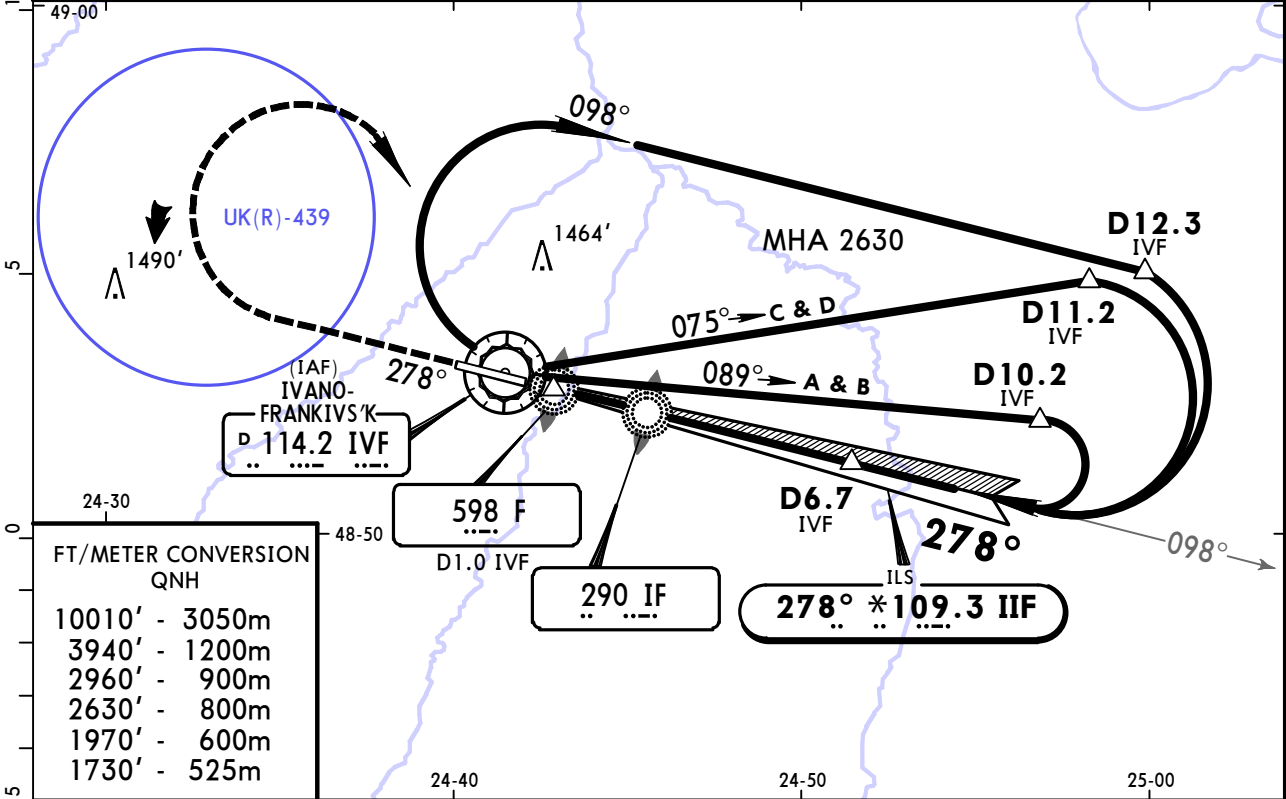
UKLI/IFO IVANO-FRANKIVS'K

29 JAN 16 (11-2) Eff 4 Feb

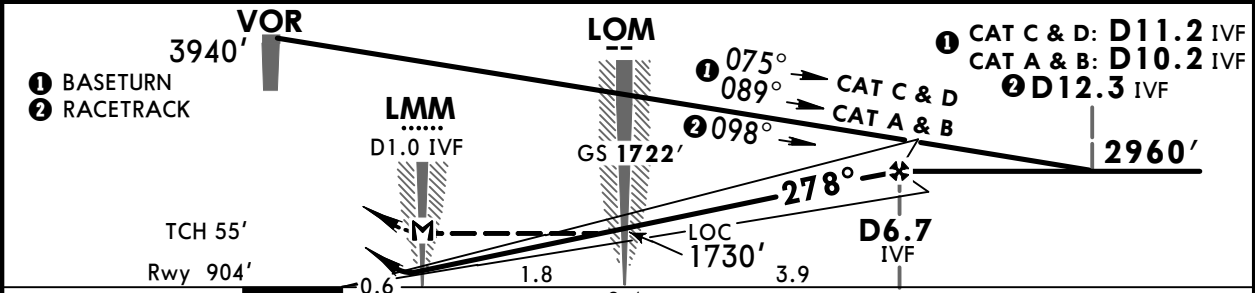
ILS or LOC Rwy 28



*FRANKO Radar				*FRANKO Tower			
127.3				134.850			
LOC IIF *109.3	Final Apch Crs 278°	GS LOM 1722' (818')	ILS DA(H) Refer to Minimums	Apt Elev 919'	Rwy 904'		
MISSED APCH: Climb on 278° to 1970', turn RIGHT climbing to 3940' to VOR, then according to chart.							MSA IVF VOR
Alt Set: hPa		Rwy Elev: 33 hPa		Trans level: By ATC		Trans alt: 10010'	
LOC: DME required.							



LOC (GS out)	IVF DME ALTITUDE	1.1	2.2	3.2	4.3	5.4	6.5
		1180'	1520'	1860'	2200'	2540'	2890'



Gnd speed-Kts	70	90	100	120	140	160	ALS PAPI 1970' on 278°
ILS GS or LOC Descent Angle	3.00°	372	478	531	637	743	
MAP at LMM/D1.0 IVF							

PANS OPS	JAR-OPS STRAIGHT-IN LANDING RWY 28				CIRCLE-TO-LAND	
	ILS DA(H) ABC: 1104' (200') D: 1107' (203')		LOC (GS out) MDA(H) 1270' (366')		Max Kts	MDA(H) VIS
	FULL	ALS out	ALS out	ALS out	100	1330' (411') 1500m
	A		RVR1300m	RVR1500m	135	1780' (861') 1600m
	B		RVR1400m	RVR1500m	180	1870' (951') 2400m
C	RVR 800m	RVR 1000m	RVR1600m	RVR1800m	205	1870' (951') 3600m
D			RVR1800m	RVR2000m		

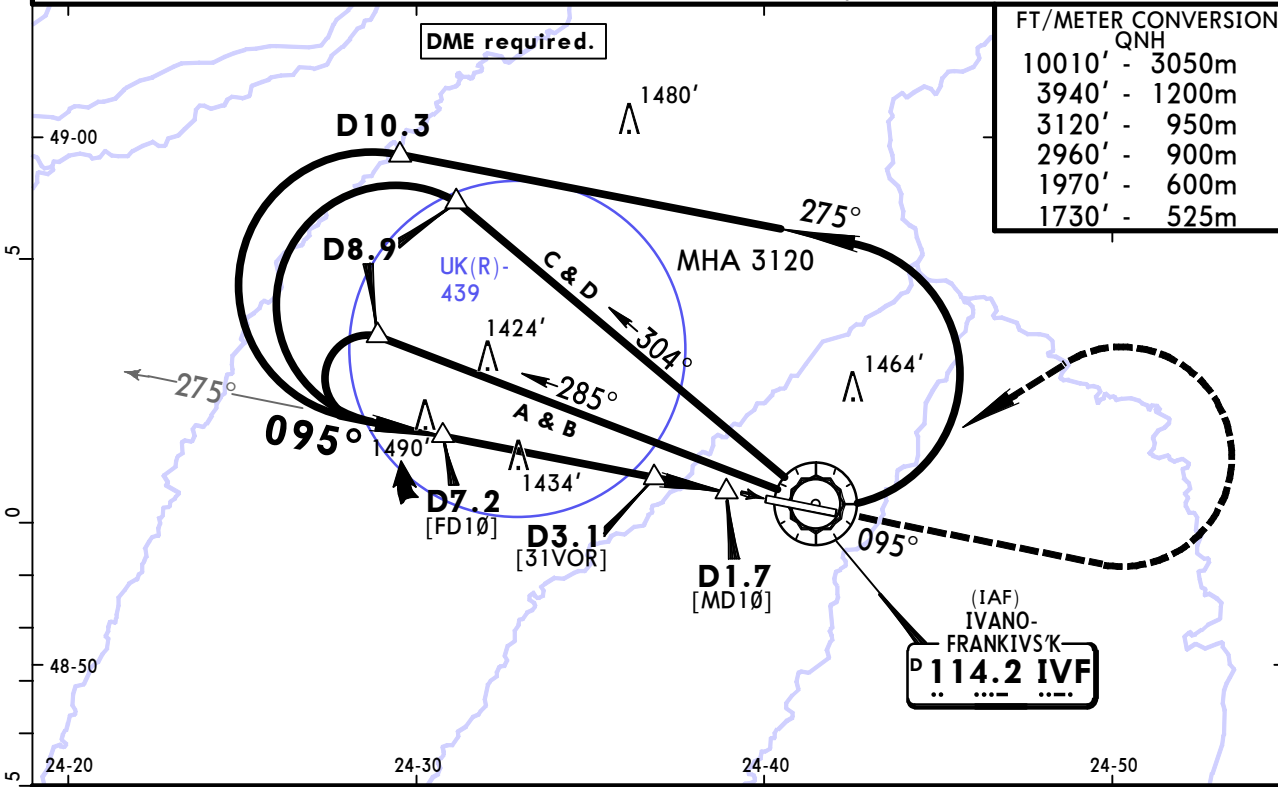
UKLI/IFO
IVANO-FRANKIVS'K

JEPPESSEN 29 JAN 16 **(13-1)** **Eff 4 Feb**

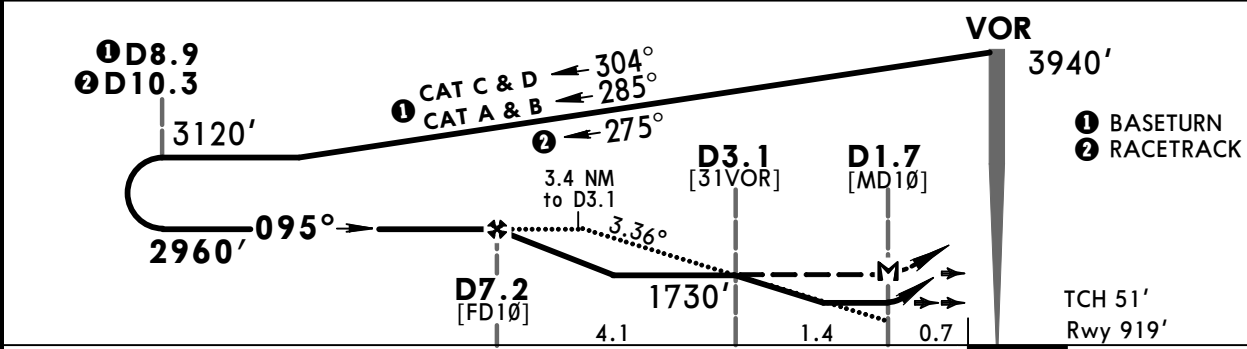
IVANO-FRANKIVS'K, UKRAINE
VOR Rwy 10

*FRANKO Radar 127.3				*FRANKO Tower 134.850	
VOR IVF 114.2	Final Apch Crs 095°	Minimum Alt D7.2 2960' (2041')	MDA(H) CONDITIONAL 1280' (361')	Apt Elev 919'	Rwy 919'
MISSED APCH: Climb on 095° to 1970', turn LEFT climbing to 3940' to VOR, then according to chart.					

Alt Set: hPa Rwy Elev: 33 hPa Trans level: By ATC Trans alt: 10010'



IVF DME	7.0	5.9	4.9	3.8	2.7
ALTITUDE	2900'	2560'	2220'	1880'	1530'



Gnd speed-Kts	70	90	100	120	140	160	ALS PAPI	1970' on 095°	
Descent Angle 3.36°	416	535	595	713	832	951			
MAP at D1.7									

PANS OPS	JAR-OPS				STRAIGHT-IN LANDING RWY 10				CIRCLE-TO-LAND					
	with D3.1		w/o D3.1		with D3.1		w/o D3.1		with D3.1		w/o D3.1		w/o D3.1	
	MDA(H) 1280' (361')		MDA(H) 1730' (811')		MDA(H) 1280' (361')		MDA(H) 1730' (811')		MDA(H) 1740' (821')		MDA(H) 1780' (861')		MDA(H) 1870' (951')	
	ALS out		ALS out		ALS out		ALS out		ALS out		ALS out		ALS out	
	A	RVR 1300m	RVR 1500m	RVR 1500m	RVR 1500m	RVR 1500m	RVR 1500m	RVR 1500m	100	1740' (821')	1500m	100	1740' (821')	1500m
B	RVR 1400m	RVR 1500m	RVR 1500m	RVR 1500m	RVR 1500m	RVR 1500m	RVR 1500m	135	1780' (861')	1600m	135	1780' (861')	1600m	
C	RVR 1600m	RVR 1800m	RVR 1800m	RVR 1800m	RVR 1800m	RVR 1800m	RVR 1800m	180	1870' (951')	2400m	180	1870' (951')	2400m	
D	RVR 1800m	RVR 2000m	RVR 2000m	RVR 2000m	RVR 2000m	RVR 2000m	RVR 2000m	205	1870' (951')	3600m	205	1870' (951')	3600m	

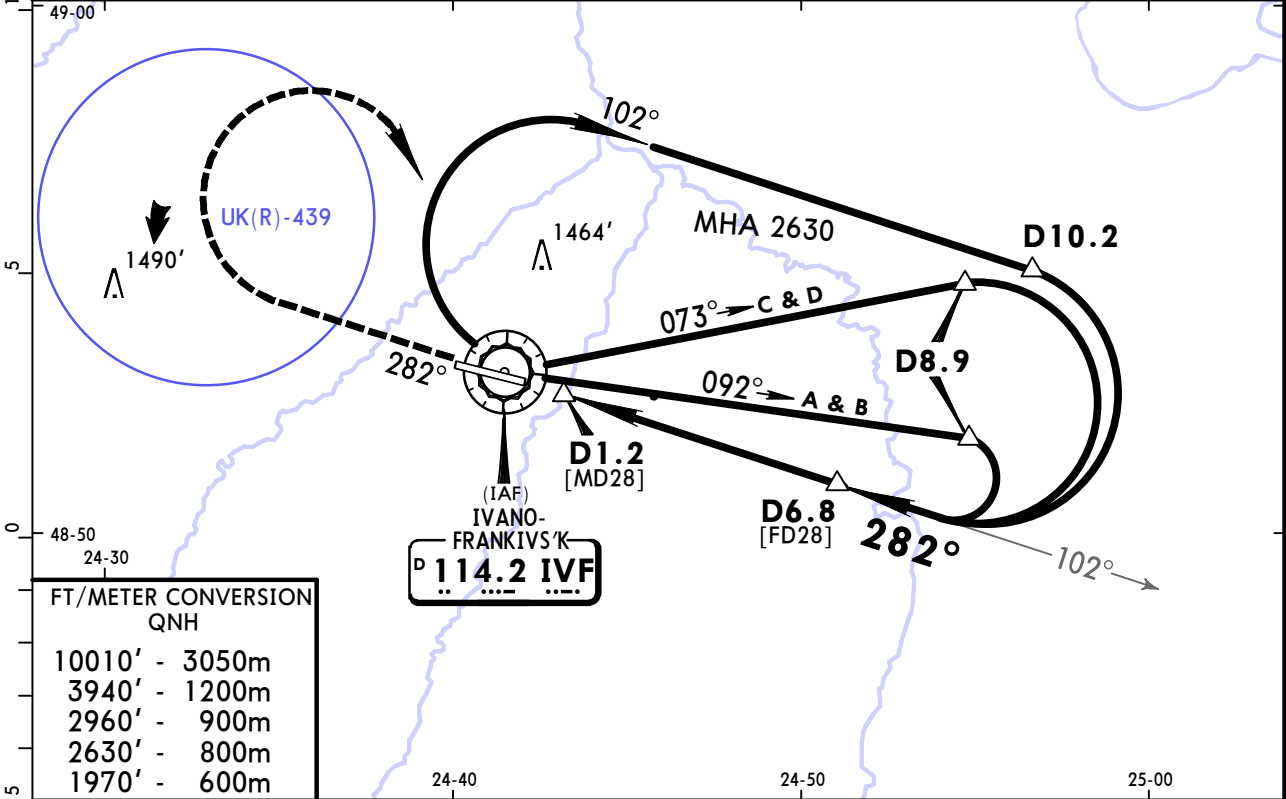
UKLI/IFO
IVANO-FRANKIVS'K

JEPPESEN 29 JAN 16 **(13-2)** **Eff 4 Feb**

IVANO-FRANKIVS'K, UKRAINE
VOR Rwy 28

*FRANKO Radar				*FRANKO Tower	
127.3				134.850	
VOR IVF 114.2	Final Apch Crs 282°	Minimum Alt D6.8 2960' (2056')	MDA(H) 1270' (366')	Apt Elev 919'	
MISSED APCH: Climb on 282° to 1970', turn RIGHT climbing to 3940' to VOR, then according to chart.					
MSA IVF VOR					

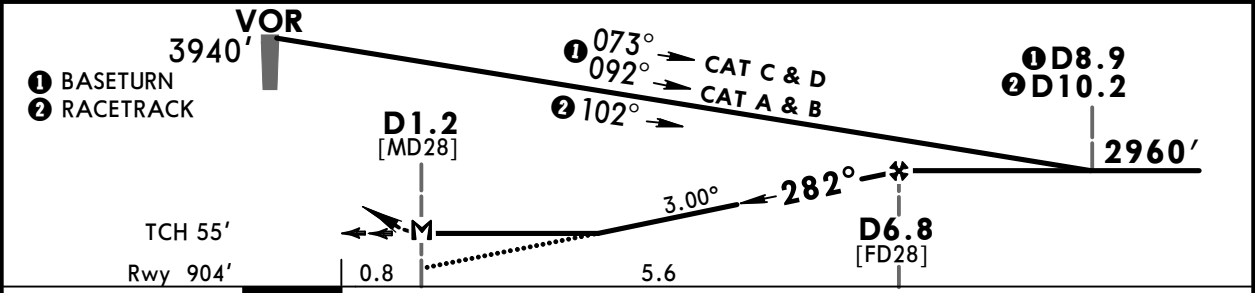
Alt Set: hPa Rwy Elev: 33 hPa Trans level: By ATC Trans alt: 10010'
DME required.



FT/METER CONVERSION
 QNH

10010'	3050m
3940'	1200m
2960'	900m
2630'	800m
1970'	600m

IVF DME	1.6	2.7	3.8	4.9	5.9
ALTITUDE	1350'	1690'	2030'	2370'	2710'



Gnd speed-Kts	70	90	100	120	140	160	ALS PAPI 1970' on 282°
Descent Angle 3.00°	372	478	531	637	743	849	

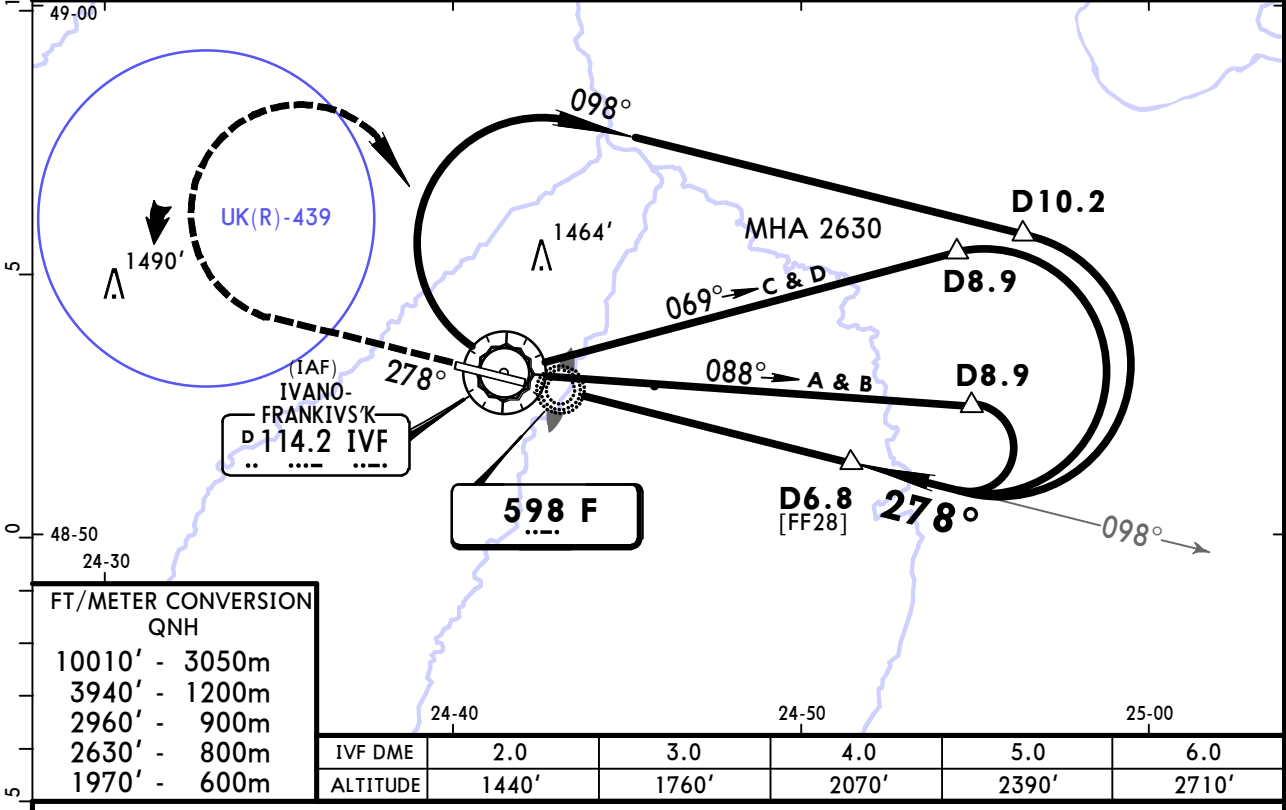
PANS OPS	JAR-OPS			STRAIGHT-IN LANDING RWY 28		CIRCLE-TO-LAND	
	MDA(H) 1270' (366')				ALS out		Max Kts
	A	RVR 1300m			RVR 1500m	100	MDA(H) 1330' (411') VIS 1500m
	B	RVR 1400m			RVR 1800m	135	1780' (861') 1600m
	C	RVR 1600m			RVR 2000m	180	1870' (951') 2400m
D	RVR 1800m				205	1870' (951') 3600m	

UKLI/IFO
IVANO-FRANKIVS'K

JEPPESEN
 31 MAR 17 **(16-1)**

IVANO-FRANKIVS'K, UKRAINE
NDB Rwy 28

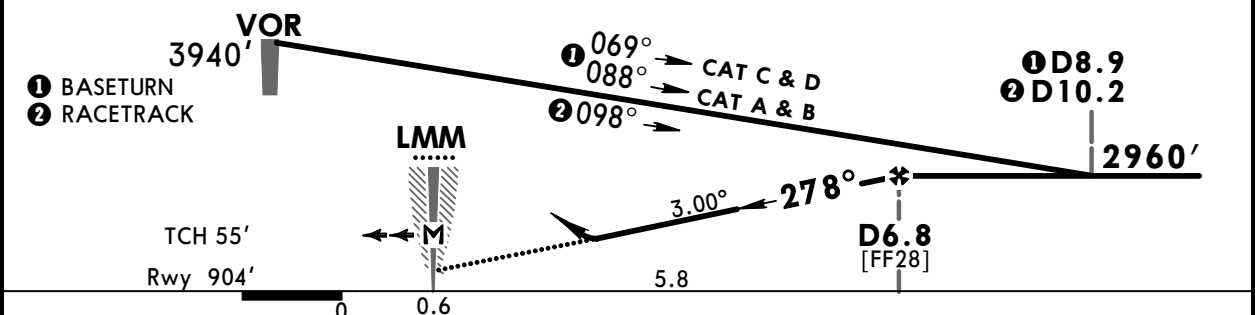
*FRANKO Radar			*FRANKO Tower		
127.3			134.850		
NDB F 598	Final Apch Crs 278°	Minimum Alt D6.8 2960' (2056')	DA/MDA(H) 1300' (396')	Apt Elev 919'	Rwy 904'
MISSED APCH: Climb on 278° to 1970', turn RIGHT climbing to 3940' to VOR, then according to chart.					
Alt Set: hPa		Rwy Elev: 33 hPa	Trans level: By ATC		Trans alt: 10010'
DME required.					



FT/METER CONVERSION
QNH

10010'	-	3050m
3940'	-	1200m
2960'	-	900m
2630'	-	800m
1970'	-	600m

IVF DME	2.0	3.0	4.0	5.0	6.0
ALTITUDE	1440'	1760'	2070'	2390'	2710'



Gnd speed-Kts	70	90	100	120	140	160
Descent Angle 3.00°	372	478	531	637	743	849

ALS
 PAPI: **1970'** on **278°**

Standard		STRAIGHT-IN LANDING RWY 28		CIRCLE-TO-LAND	
CDFA DA/MDA(H) 1300' (396')				ALS out	
A	RVR 1500m		Max Kts	MDA(H)	VIS
B	RVR 1500m		100	1330' (411')	1500m
C	RVR 1600m	RVR 1800m	135	1780' (861')	1600m
D	RVR 1600m	RVR 1800m	180	1870' (951')	2400m
			205	1870' (951')	3600m

PANS OPS

Chart changes since cycle 19-2018

ADD = added chart, REV = revised chart, DEL = deleted chart.

ACT	PROCEDURE IDENT	INDEX	REV DATE	EFF DATE
-----	-----------------	-------	----------	----------

IVANO-FRANKIVS'K, (IVANO-FRANKIVS'K - UKLI)

TERMINAL CHART CHANGE NOTICES

Chart Change Notices for Airport UKLI

Type: Terminal

Effectivity: Temporary

Begin Date: 20180602

End Date: Until Further Notice

(11-1) ILS or LOC Rwy 10 temporary suspended (based on SUP 04/18). Refer also to latest NOTAMs.