

General Information

Location: KIROVOHRAD UKR
ICAO/IATA: UKKG / KGO
Lat/Long: N48° 32.48', E032° 16.97'
Elevation: 571 ft

Airport Use: Public
Daylight Savings: Observed
UTC Conversion: -2:00 = UTC
Magnetic Variation: 7.0° E

Fuel Types: Jet A-1
Customs: No
Airport Type: IFR
Landing Fee: Yes
Control Tower: Yes
Jet Start Unit: No
LLWS Alert: No
Beacon: No

Sunrise: 0454 Z
Sunset: 1417 Z

Runway Information

Runway: 15
Length x Width: 4268 ft x 148 ft
Surface Type: asphalt
TDZ-Elev: 551 ft

Runway: 33
Length x Width: 4268 ft x 148 ft
Surface Type: asphalt
TDZ-Elev: 558 ft

Communication Information

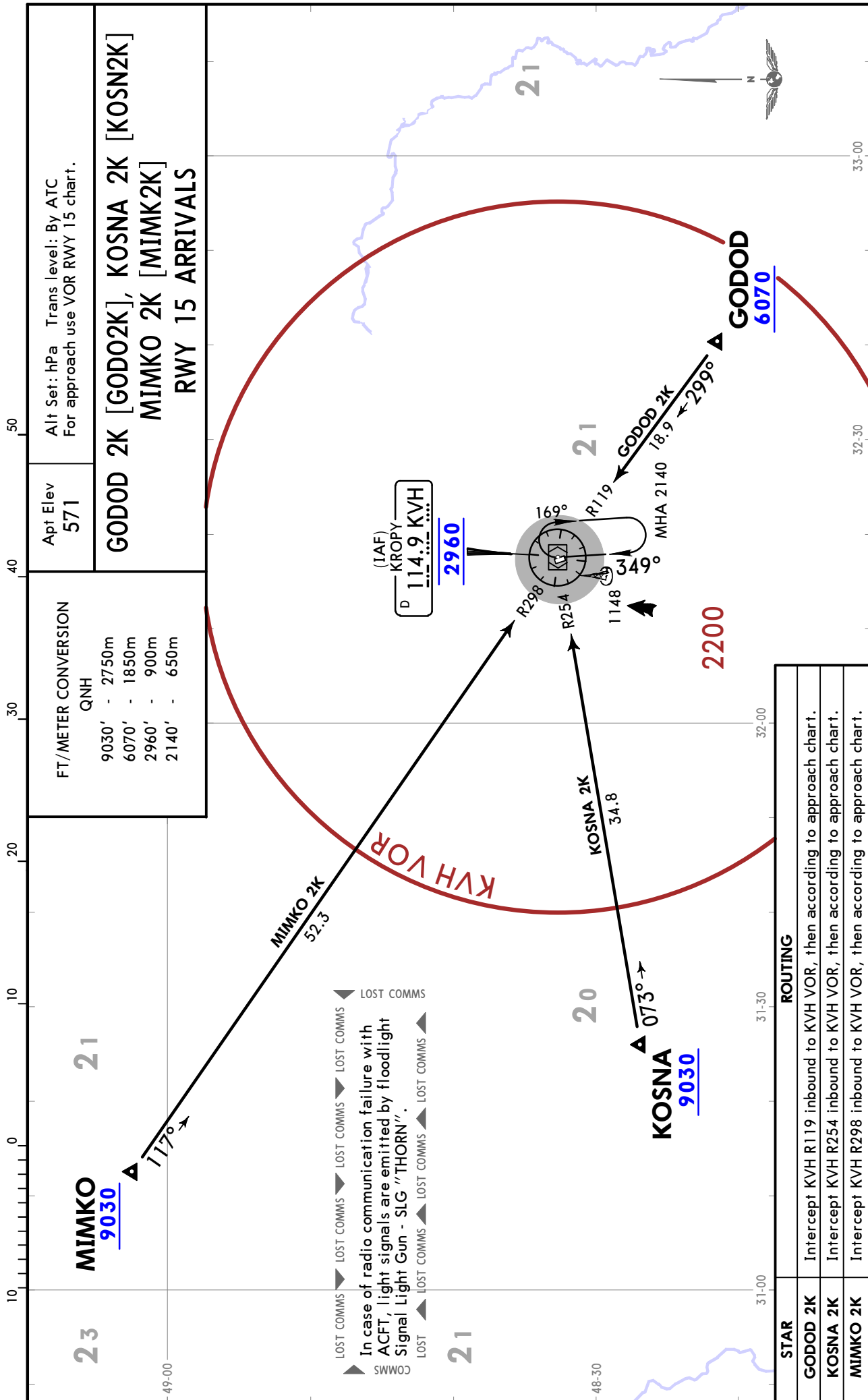
Kirovohrad Tower: 120.800
Kyiv Information: 130.500 Flight Info Service
Academy Information: 120.800 AFIS Non-English

UKKG/KGO
KIROVOHRAD

1 JUN 18 10-2

KIROVOHRAD, UKRAINE

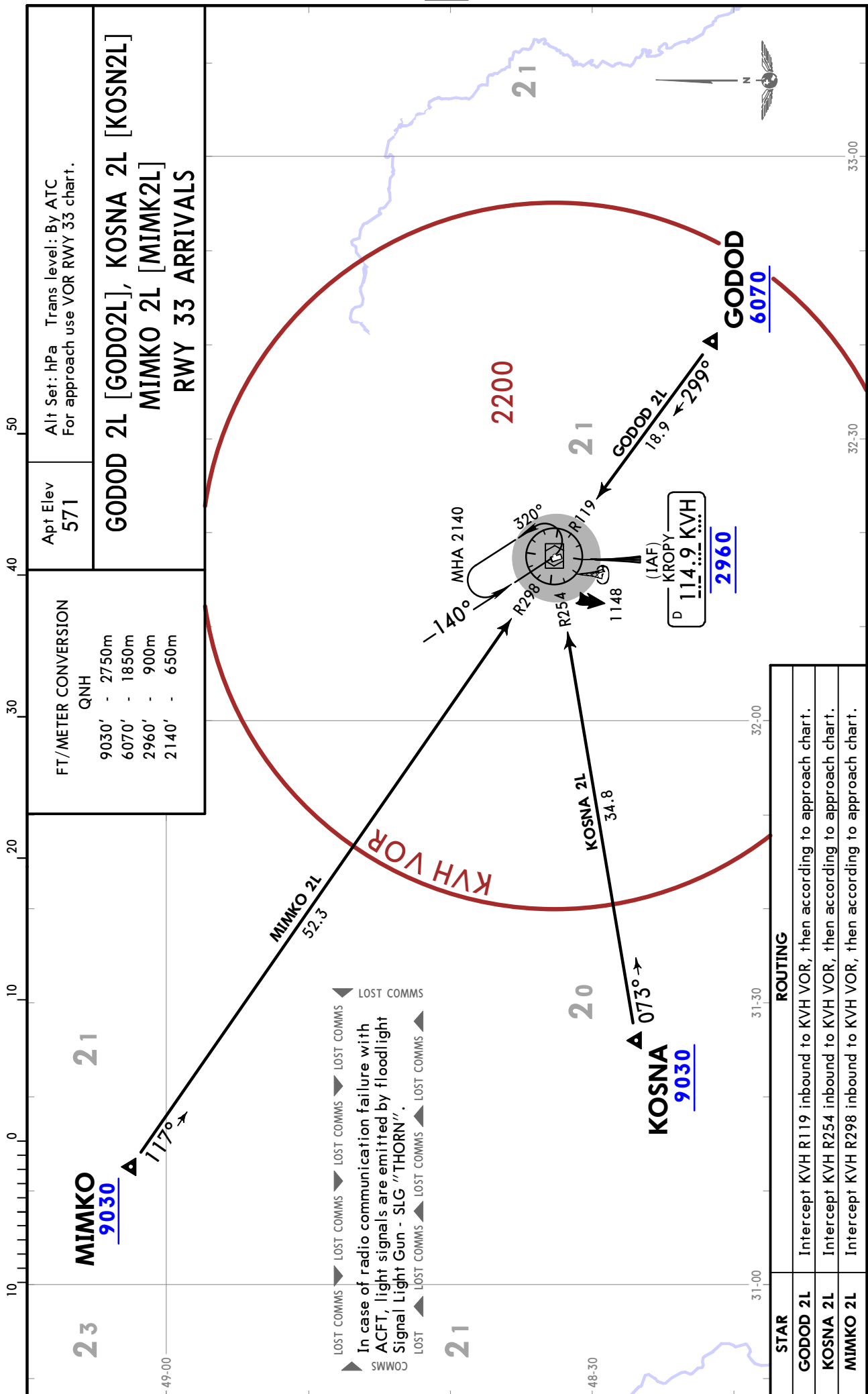
STAR



UKKG/KGO KIROVOHRAD

KIROVOHRAD, UKRAINE

STAR

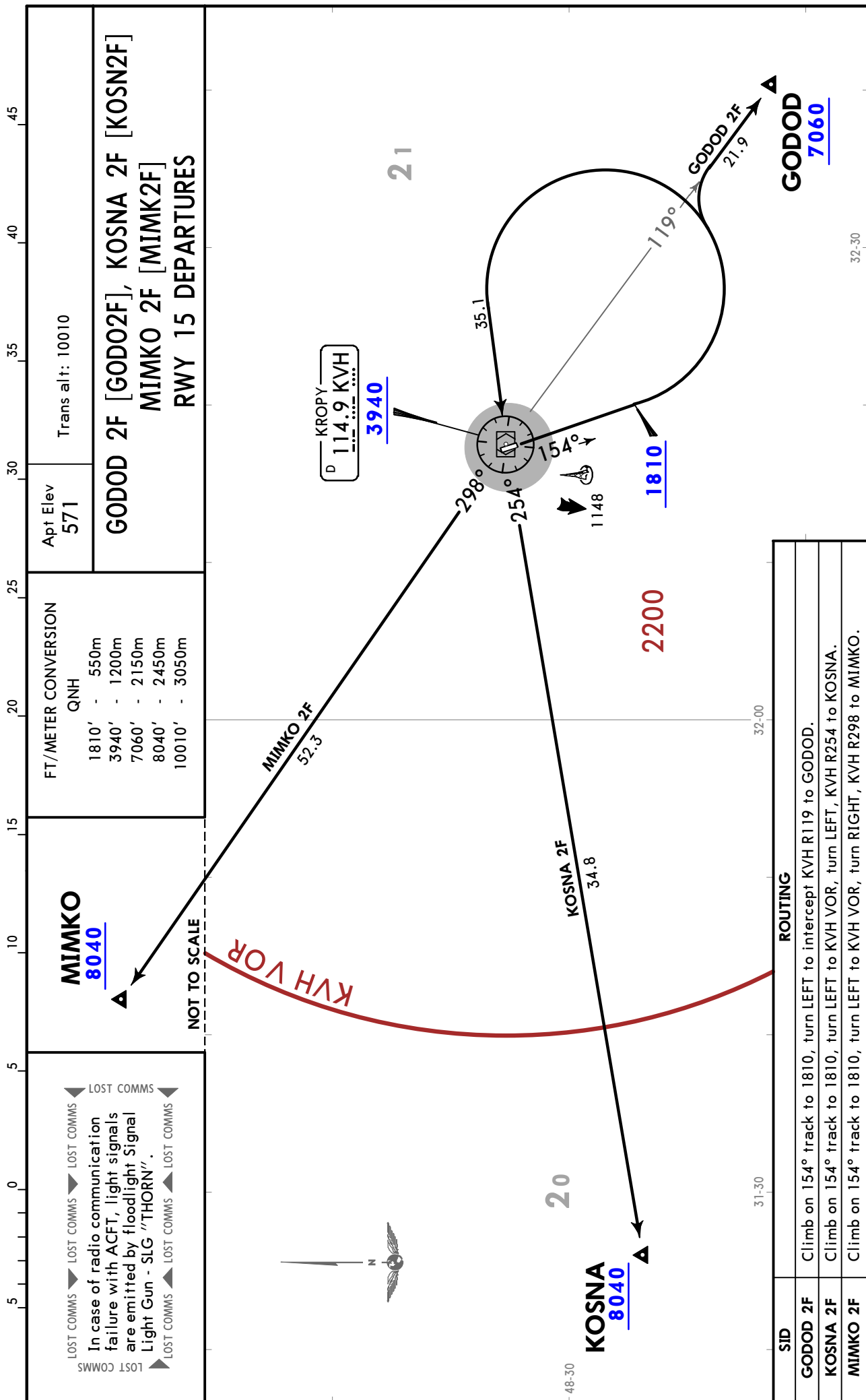


UKKG/KGO
KIROVOHRAD

JEPPESSEN
1 JUN 18 10-3

KIROVOHRAD, UKRAINE

SID



CHANGES: New chart.

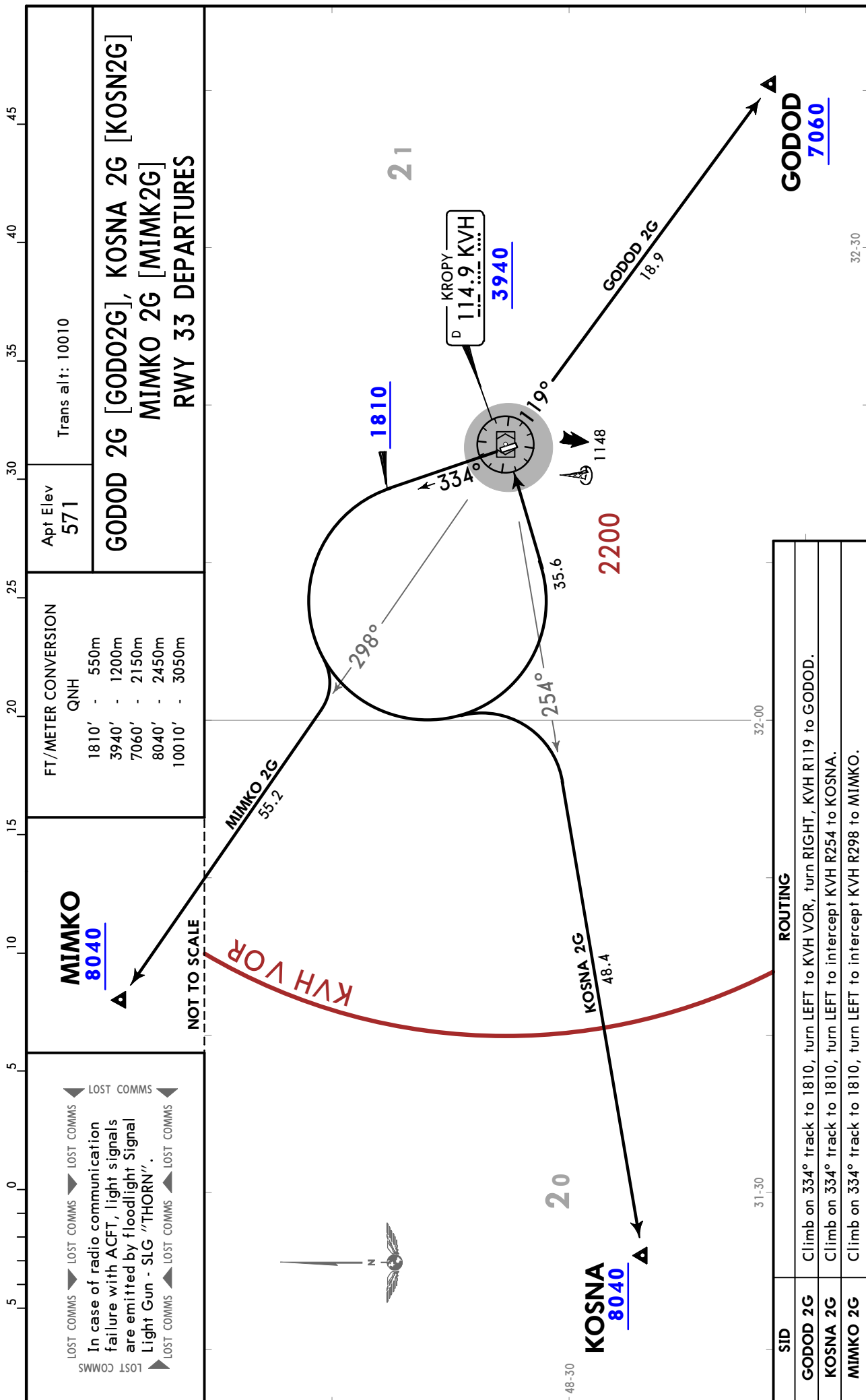
© JEPPESSEN, 2018. ALL RIGHTS RESERVED.

UKKG/KGO
KIROVOHRAD

JEPPESSEN
1 JUN 18 (10-3A)

KIROVOHRAD, UKRAINE

SID



UKKG/KGO

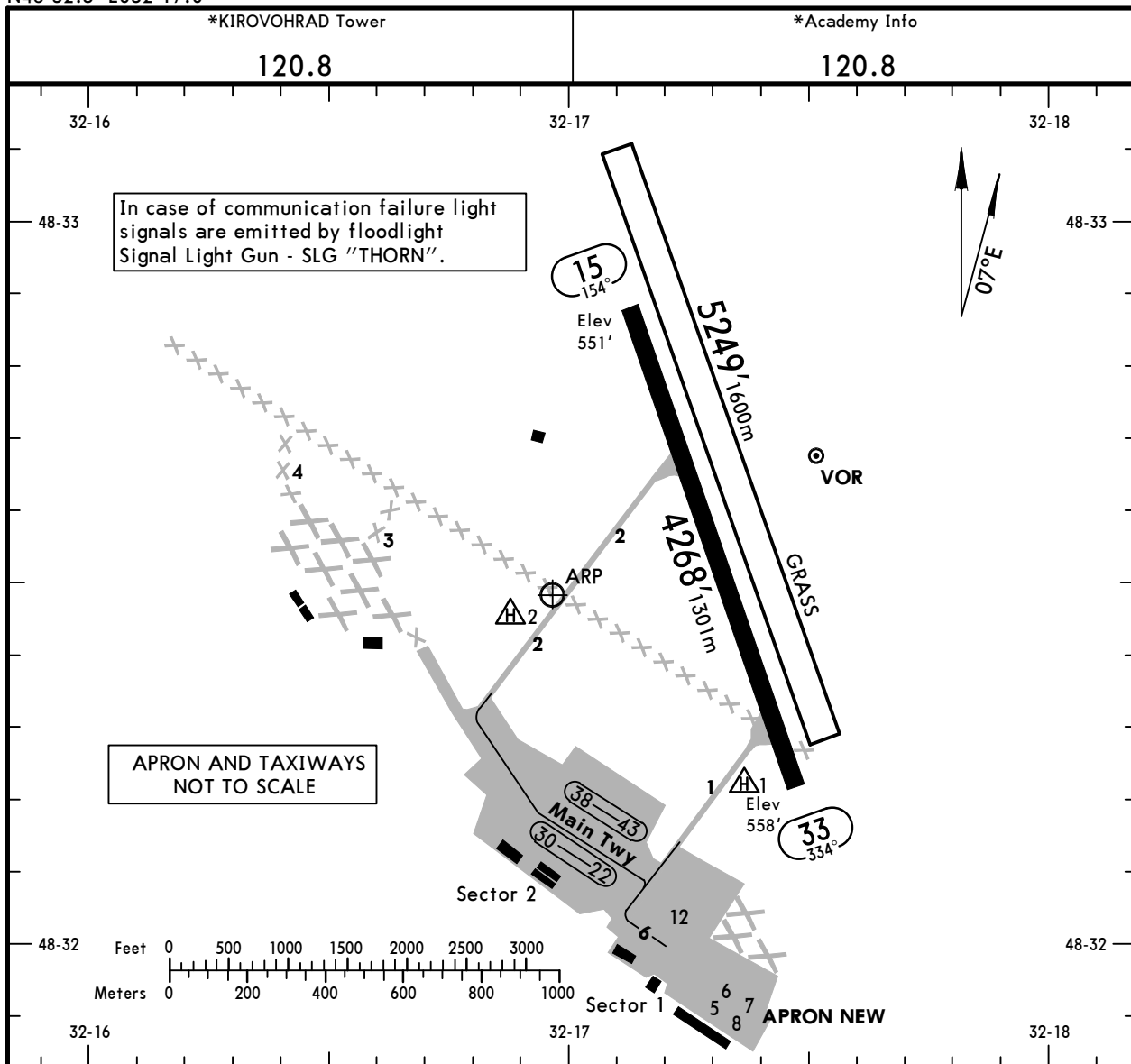
Apt Elev **571'**
N48 32.5 E032 17.0

JEPPesen

1 JUN 18 **(10-9)**

KIROVOHRAD, UKRAINE

KIROVOHRAD



ADDITIONAL RUNWAY INFORMATION

RWY	USABLE LENGTHS	LANDING BEYOND	TAKE-OFF	WIDTH
15 33		①	②	148' 45m
15 33	Grass runway			262' 80m

① LDA 4252' (1296m)

② TAKE-OFF RUN AVAILABLE

RWY 15:

From rwy head 4252' (1296m)
twy 2 int 2789' (850m)

RWY 33:

From rwy head 4252' (1296m)

JAR-OPS

TAKE-OFF

All Rwys

NIL
(DAY only)

A
B
C
D

500m

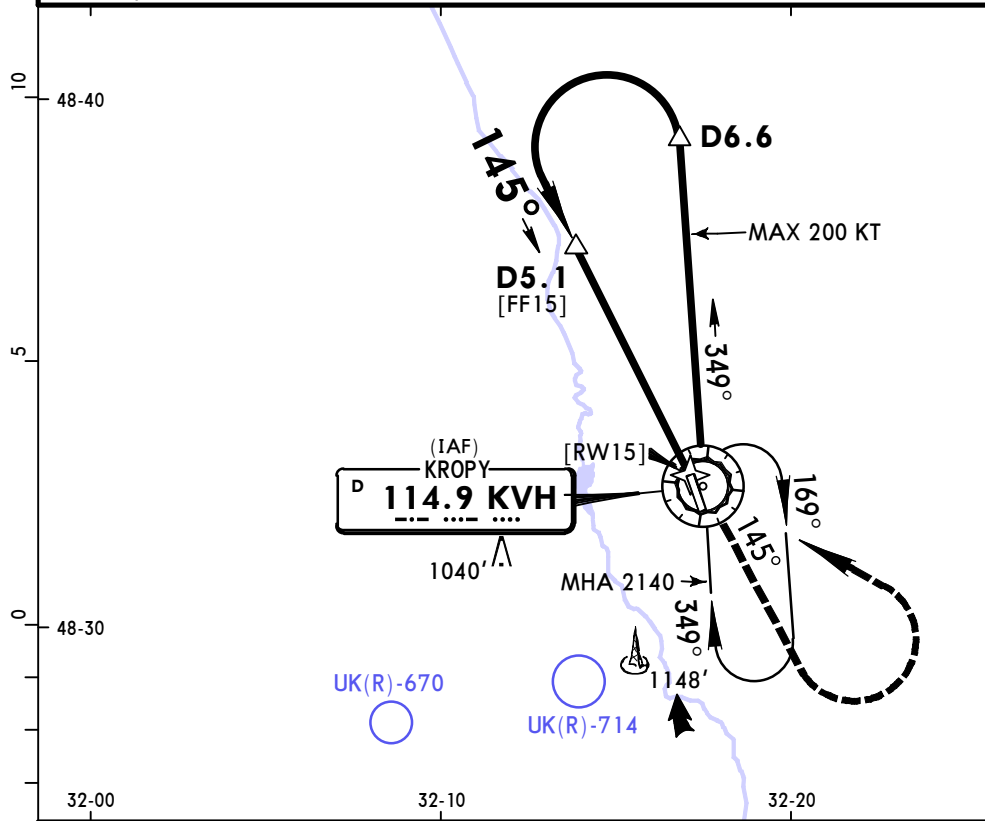
UKKG/KGO
KIROVOHRAD

JEPPESSEN
1 JUN 18 (13-1)

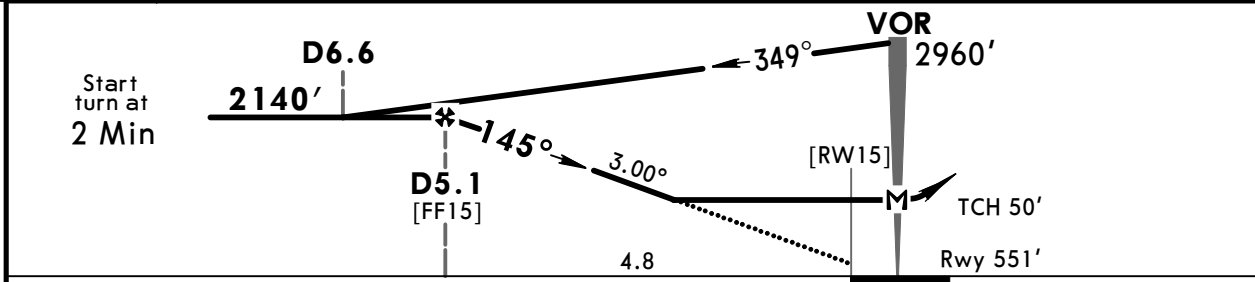
KIROVOHRAD, UKRAINE
VOR Rwy 15

*KIROVOHRAD Tower				*Academy Info		
120.8				120.8		
VOR KVH 114.9	Final Apch Crs 145°	Minimum Alt D5.1 2140' (1589')	MDA(H) 970' (419')	Apt Elev 571'	Rwy 551'	2200 MSA KVH VOR
MISSED APCH: Climb on 145° to 1810', then turn LEFT to VOR climbing 2140', then according to chart. MAX 240 KT						
Alt Set: hPa		Rwy Elev: 20 hPa		Trans level: By ATC		Trans alt: 10010'
DME required.						

FT/METER CONVERSION	
QNH	
10010'	3050m
2960'	900m
2140'	650m
1810'	550m



KVH DME	4.9	3.8	2.7	1.6
ALTITUDE	2060'	1710'	1380'	1040'



Gnd speed-Kts	70	90	100	120	140	160	240 KT MAX	1810' on 145°
Descent Angle 3.00°	372	478	531	637	743	849		
MAP at VOR								

PANS OPS	JAR-OPS			STRAIGHT-IN LANDING RWY 15			CIRCLE-TO-LAND		
	MDA(H) 970' (419')						Max Kts	MDA(H)	VIS
	A	RVR 1500m					100	1040' (469')	1500m
	B	RVR 1800m					135	1120' (549')	1600m
	C	RVR 2000m					180	1480' (909')	2400m
D	RVR 2000m					205	1480' (909')	3600m	

CHANGES: New procedure.

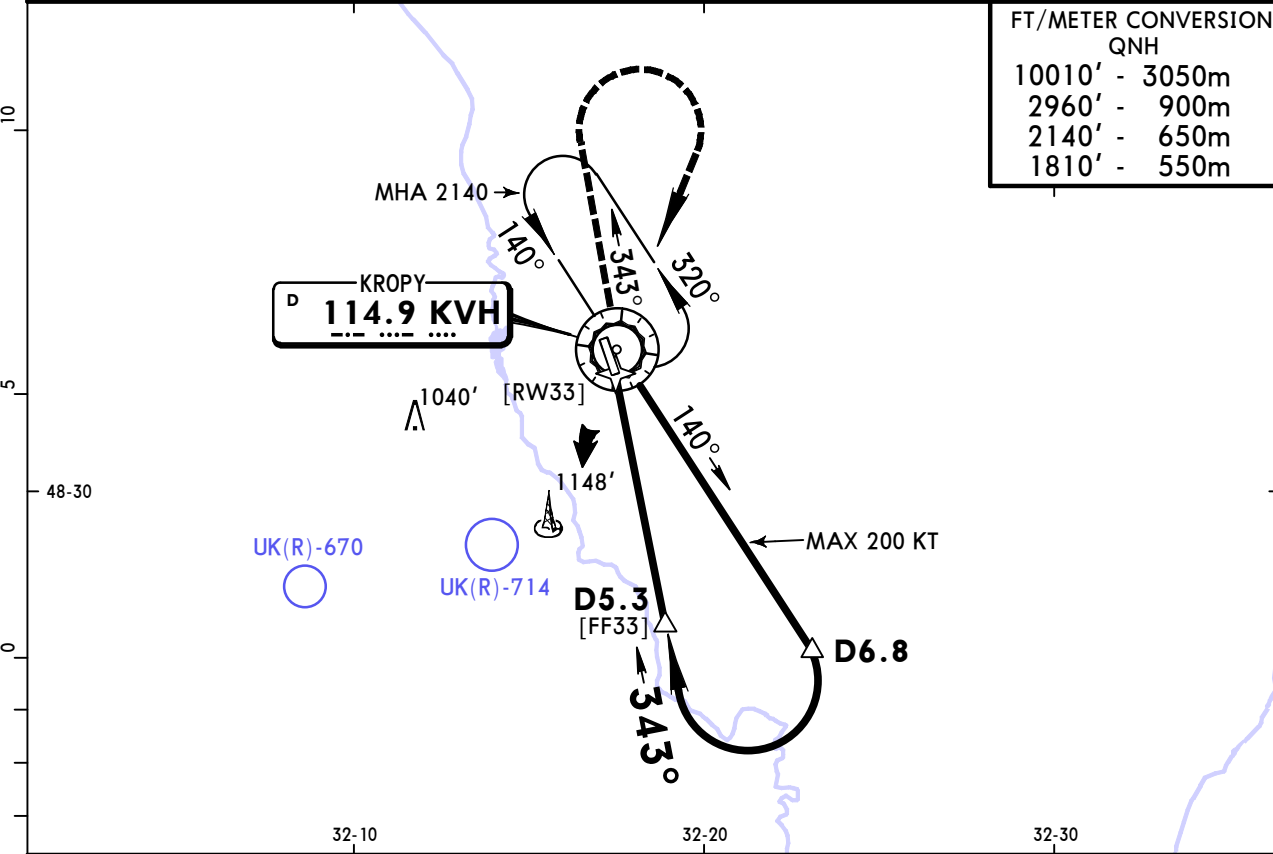
© JEPPESSEN, 2018. ALL RIGHTS RESERVED.

UKKG/KGO
KIROVOHRAD

JEPPESSEN
1 JUN 18 **(13-2)**

KIROVOHRAD, UKRAINE
VOR Rwy 33

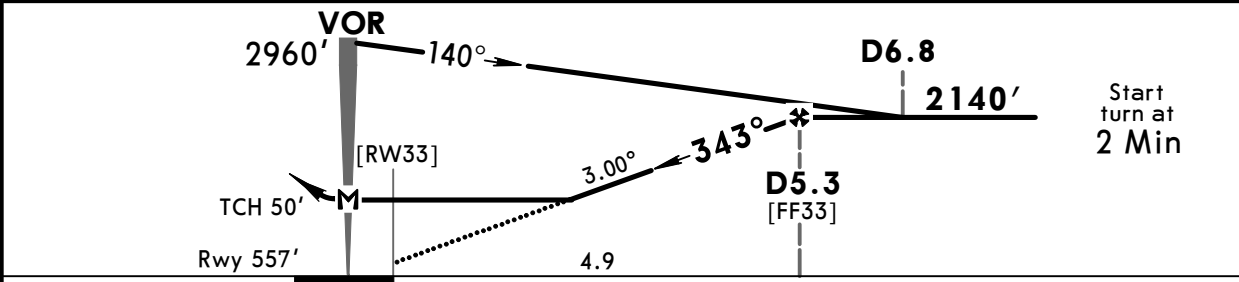
*KIROVOHRAD Tower			*Academy Info		
120.8			120.8		
VOR KVH 114.9	Final Apch Crs 343°	Minimum Alt D5.3 2140' (1583')	MDA(H) Refer to Minimums	Apt Elev 571'	2200 MSA KVH VOR
MISSED APCH: Climb on 343° to 1810', then turn RIGHT to VOR climbing 2140', then according to chart. MAX 240 KT					
Alt Set: hPa		Rwy Elev: 20 hPa		Trans level: By ATC	
DME required.					



FT/METER CONVERSION
QNH

10010'	3050m
2960'	900m
2140'	650m
1810'	550m

KVH DME	4.9	3.8	2.7	1.6
ALTITUDE	2020'	1680'	1330'	990'



Gnd speed-Kts	70	90	100	120	140	160	240 KT MAX	1810' ↑ on 145°
Descent Angle	3.00°	372	478	531	637	743		

JAR-OPS				STRAIGHT-IN LANDING RWY 33				CIRCLE-TO-LAND					
MDA(H)				C: 970' (413')				Max Kts					
AB: 940' (383')				D: 990' (433')						MDA(H)		VIS	
A	RVR 1500m					100		1040' (469')		1500m			
B	RVR 1800m					135		1120' (549')		1600m			
C	RVR 2000m					180		1480' (909')		2400m			
D						205		1480' (909')		3600m			

PANS OPS

Chart changes since cycle 19-2018

ADD = added chart, REV = revised chart, DEL = deleted chart.

ACT	PROCEDURE IDENT	INDEX	REV DATE	EFF DATE
-----	-----------------	-------	----------	----------

KIROVOHRAD, (KIROVOHRAD - UKKG)

TERMINAL CHART CHANGE NOTICES

No Chart Change Notices for Airport UKKG