

General Information

Location: ZAPORIZHZHIA UKR
ICAO/IATA: UKDE / OZH
Lat/Long: N47° 52.03', E035° 18.90'
Elevation: 374 ft

Airport Use: Public
Daylight Savings: Observed
UTC Conversion: -2:00 = UTC
Magnetic Variation: 7.0° E

Fuel Types: Jet A-1
Repair Types: Minor Airframe, Minor Engine
Customs: Yes
Airport Type: IFR
Landing Fee: Yes
Control Tower: Yes
Jet Start Unit: No
LLWS Alert: No
Beacon: No

Sunrise: 0439 Z
Sunset: 1406 Z

Runway Information

Runway: 02L
Length x Width: 6890 ft x 279 ft
Surface Type: grass
TDZ-Elev: 340 ft
Lighting: Edge

Runway: 02R
Length x Width: 8202 ft x 138 ft
Surface Type: concrete
TDZ-Elev: 339 ft
Lighting: Edge, ALS

Runway: 20L
Length x Width: 8202 ft x 138 ft
Surface Type: concrete
TDZ-Elev: 373 ft
Lighting: Edge, ALS

Runway: 20R
Length x Width: 6890 ft x 279 ft
Surface Type: grass
TDZ-Elev: 371 ft
Lighting: Edge

Communication Information

Zaporizhzhia Tower: 120.050

Zaporizhzhia Tower: 126.050 Secondary

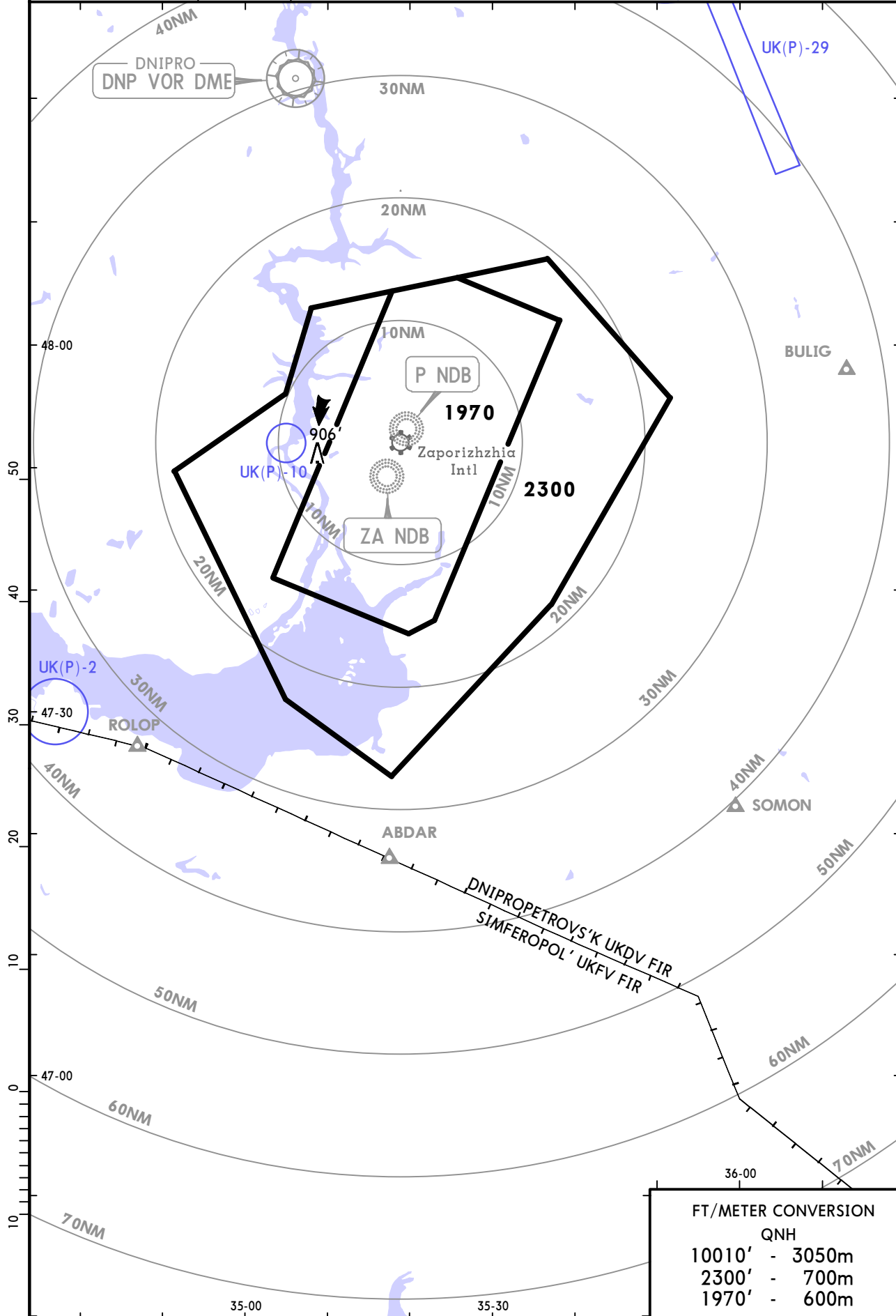
Zaporizhzhia Radar Approach: 119.200

UKDE/OZH ZAPORIZHZHIA INTL

ZAPORIZHZHIA
Radar (APP)
119.2

Apt Elev
374'

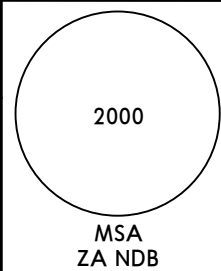
Alt Set: hPa
Trans level: By ATC Trans alt: 10010'
1. This chart may only be used for cross-checking of altitudes assigned while the aircraft identified.
2. MRVA are safe if the temperature at the surface is 4°C or above. For lower temperatures, corrected minimum levels will be provided by ATC.



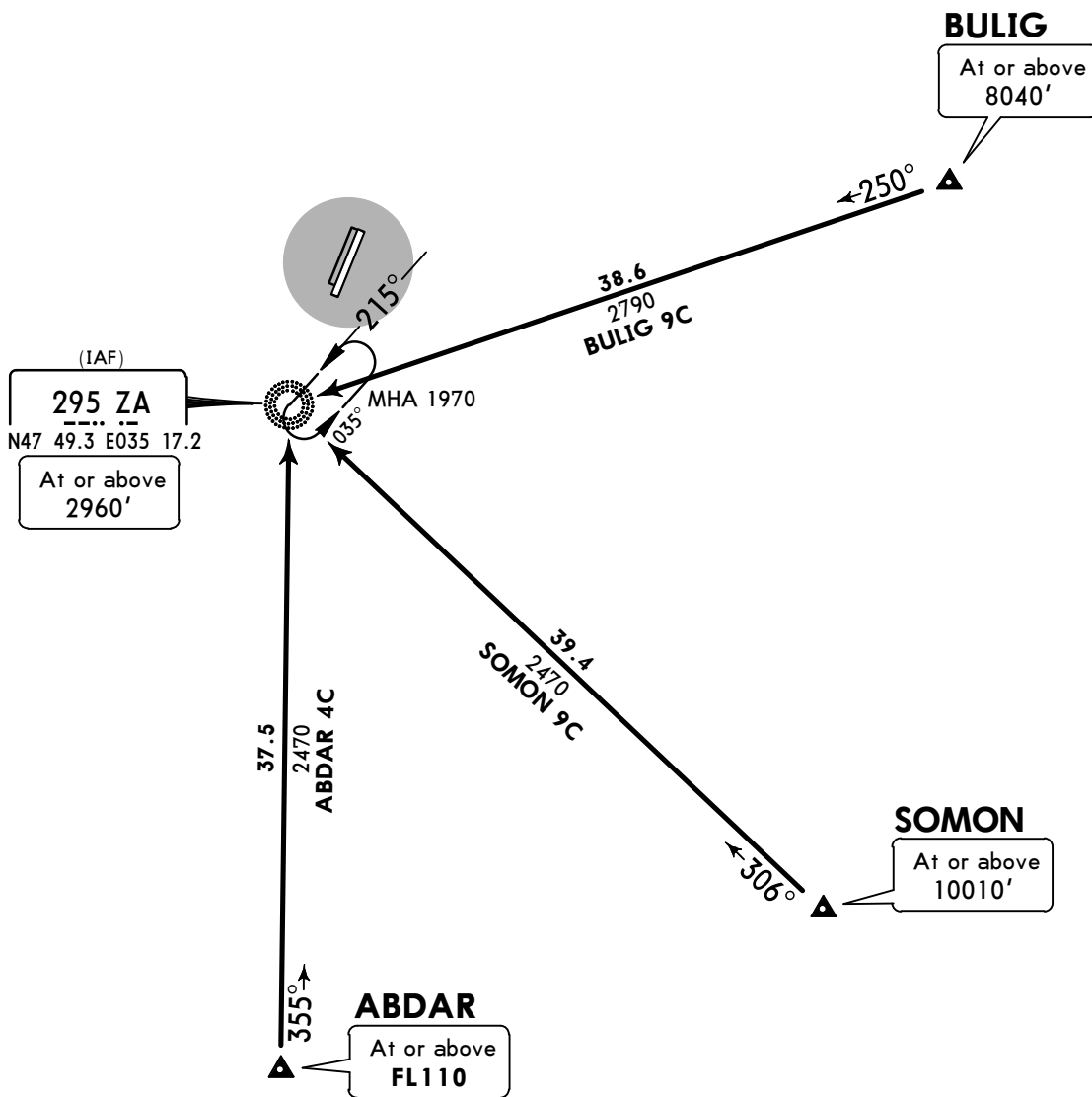
UKDE/OZH
ZAPORIZHZHIA INTL

Apt Elev
374'

Alt Set: hPa
 Trans level: By ATC Trans alt: 10010'
 Flights over the city are prohibited due to noise abatement.



ABDAR 4C [ABDA4C]
BULIG 9C [BULI9C]
SOMON 9C [SOM09C]
RWY 02L/R ARRIVALS



FT/METER CONVERSION	
QNH	
10010'	- 3050m
8040'	- 2450m
2960'	- 900m
2470'	- 750m
1970'	- 600m

STAR	ROUTING
ABDAR 4C	On 355° bearing to ZA NDB.
BULIG 9C	On 250° bearing to ZA NDB.
SOMON 9C	On 306° bearing to ZA NDB.

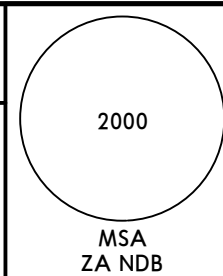
UKDE/OZH
ZAPORIZHZHIA INTL

JEPPESEN ZAPORIZHZHIA, UKRAINE
 18 MAY 18 **(10-2A)** Eff 24 May

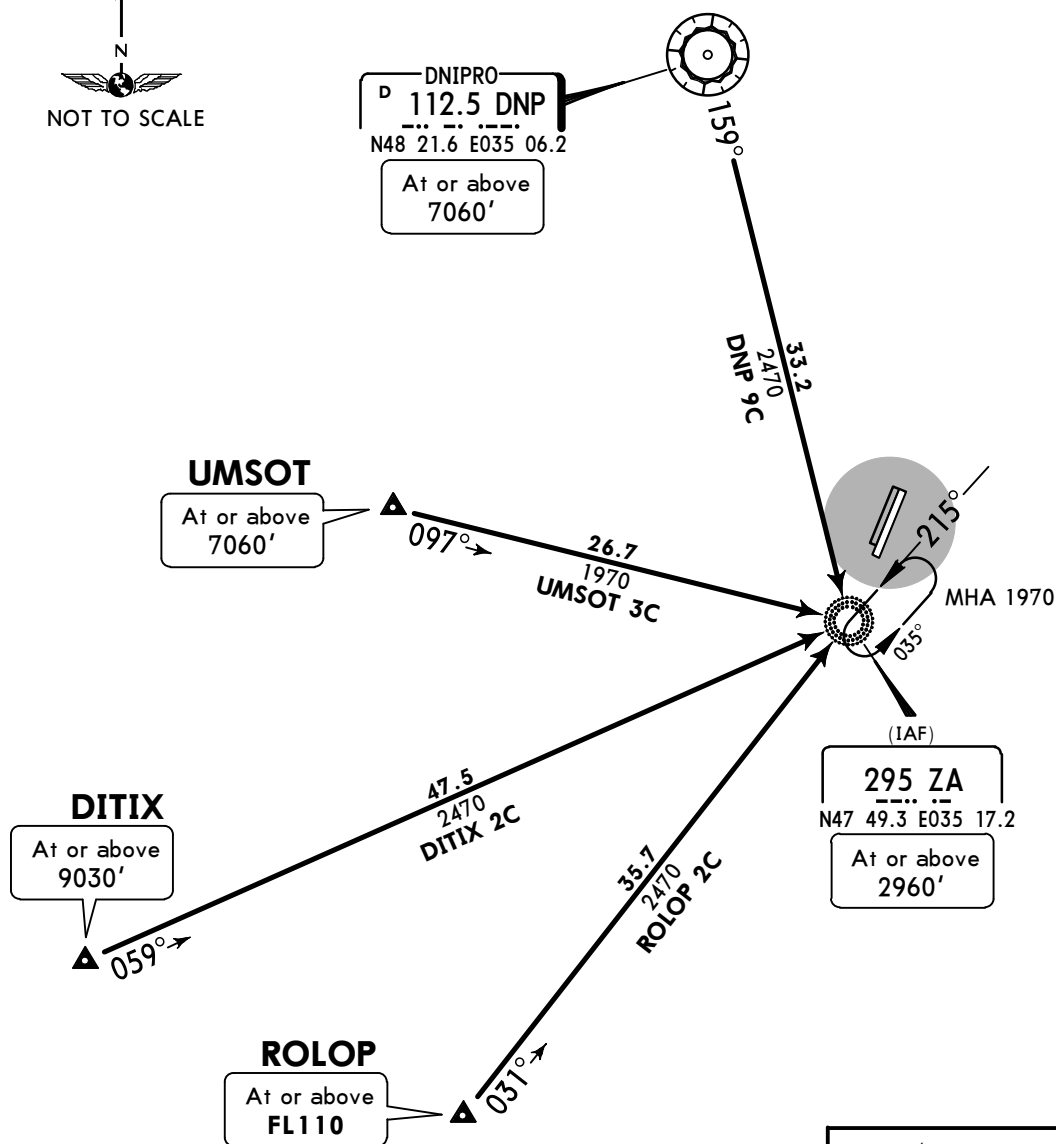
STAR

Apt Elev
374'

Alt Set: hPa
 Trans level: By ATC Trans alt: 10010'
 Flights over the city are prohibited due to noise abatement.



DITIX 2C [DITI2C]
DNIPRO 9C (DNP 9C) [DNP9C]
ROLOP 2C [ROLO2C]
UMSOT 3C [UMSO3C]
RWY 02L/R ARRIVALS



FT/METER CONVERSION	
QNH	
10010'	- 3050m
9030'	- 2750m
7060'	- 2150m
2960'	- 900m
2470'	- 750m
1970'	- 600m

STAR	ROUTING
DITIX 2C	On 059° bearing to ZA NDB.
DNP 9C	On DNP R-159 to ZA NDB.
ROLOP 2C	On 031° bearing to ZA NDB.
UMSOT 3C	On 097° bearing to ZA NDB.

UKDE/OZH
ZAPORIZHZHIA INTL

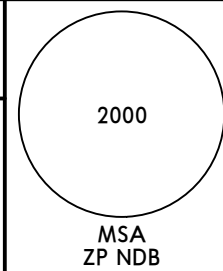
18 MAY 18 **10-2B** Eff 24 May

JEPPesen ZAPORIZHZHIA, UKRAINE

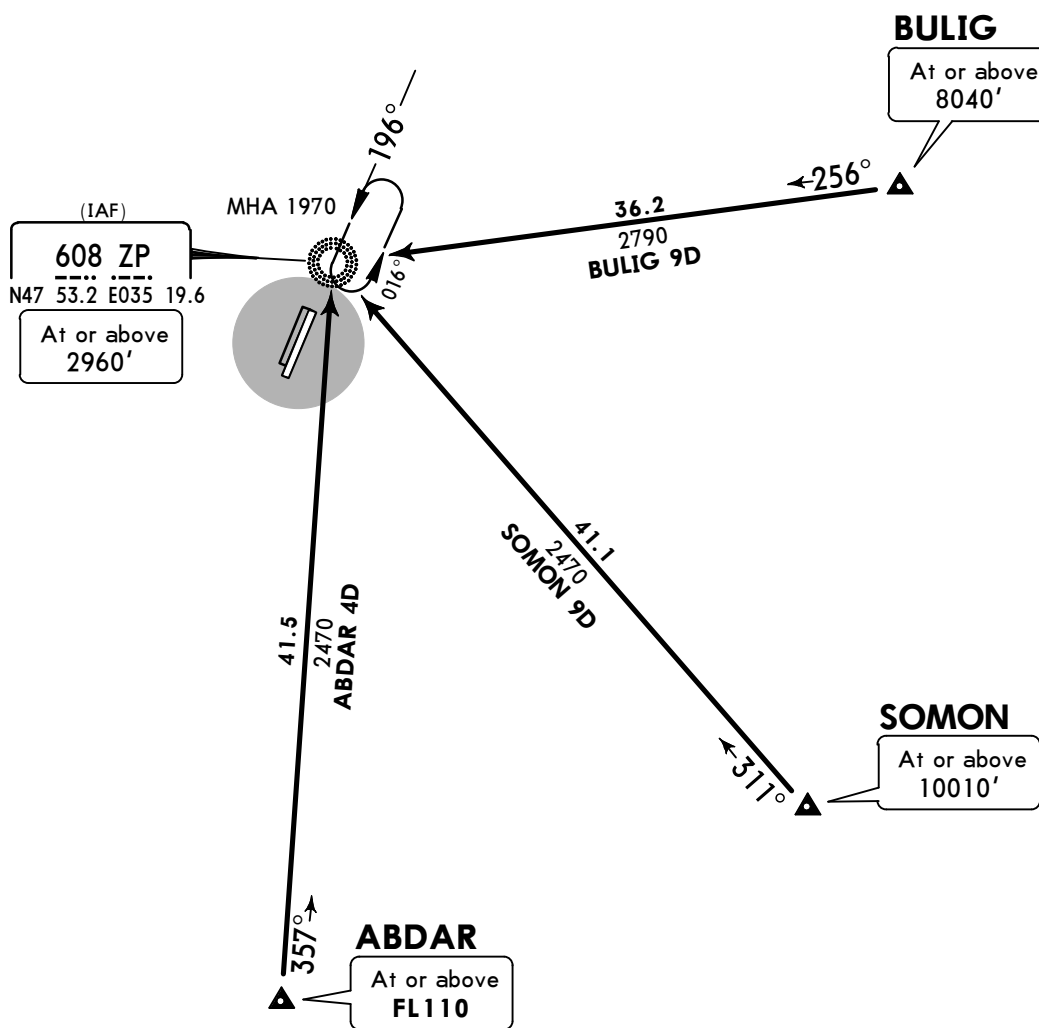
STAR

Apt Elev
374'

Alt Set: hPa
 Trans level: By ATC Trans alt: 10010'
 Flights over the city are prohibited due to noise abatement.



ABDAR 4D [ABDA4D]
BULIG 9D [BULI9D]
SOMON 9D [SOM09D]
RWY 20L/R ARRIVALS



FT/METER CONVERSION	
QNH	
10010'	- 3050m
8040'	- 2450m
2960'	- 900m
2470'	- 750m
1970'	600m

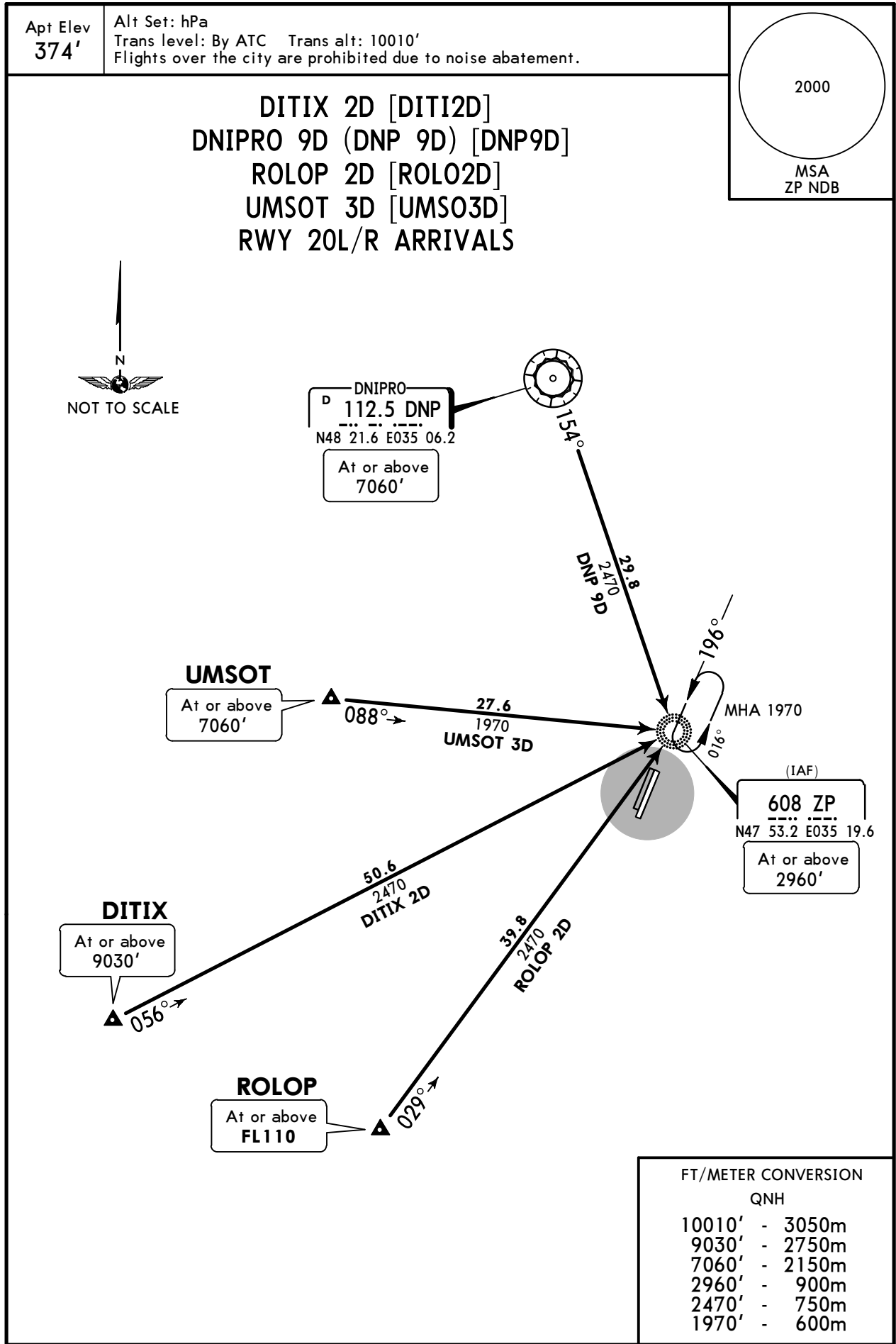
STAR	ROUTING
ABDAR 4D	On 357° bearing to ZP NDB.
BULIG 9D	On 256° bearing to ZP NDB.
SOMON 9D	On 311° bearing to ZP NDB.

UKDE/OZH
ZAPORIZHZHIA INTL

18 MAY 18 **10-2C** Eff 24 May

JEPPESEN ZAPORIZHZHIA, UKRAINE

STAR



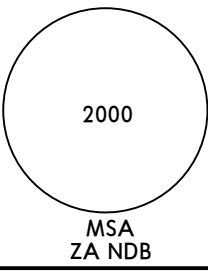
Apt Elev 374'	Alt Set: hPa Trans level: By ATC Trans alt: 10010' Flights over the city are prohibited due to noise abatement.	
<p>DITIX 2D [DITI2D] DNIPRO 9D (DNP 9D) [DNP9D] ROLOP 2D [ROLO2D] UMSOT 3D [UMSO3D] RWY 20L/R ARRIVALS</p>		

UKDE/OZH
ZAPORIZHZHIA INTL

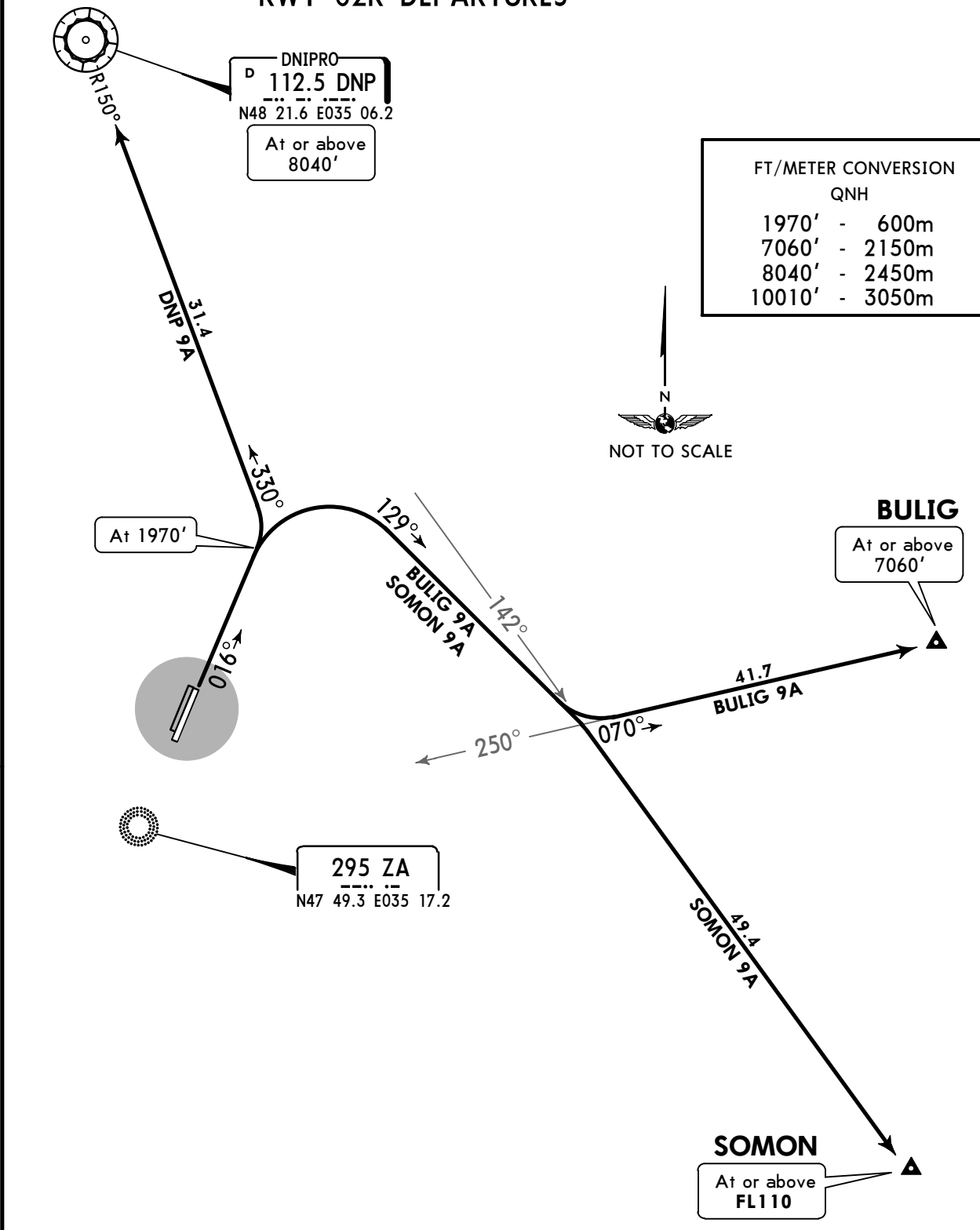
JEPPESEN 18 MAY 18 **10-3** Eff 24 May

ZAPORIZHZHIA, UKRAINE

SID

Apt Elev 374'	Trans level: By ATC Trans alt: 10010' 1. EXPECT close-in obstacles. 2. Flights over the city are prohibited due to noise abatement.	
-------------------------	---	---

BULIG 9A [BULI9A]
DNIPRO 9A (DNP 9A) [DNP9A]
SOMON 9A [SOM09A]
RWY 02R DEPARTURES



FT/METER CONVERSION	
QNH	
1970'	- 600m
7060'	- 2150m
8040'	- 2450m
10010'	- 3050m

DNIPRO
D 112.5 DNP
 N48 21.6 E035 06.2
 At or above 8040'

295 ZA
 N47 49.3 E035 17.2

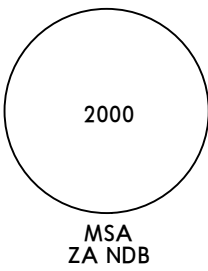
SID	ROUTING
BULIG 9A	Climb on 016° track to 1970', turn RIGHT, 129° track, turn LEFT to intercept 070° bearing from ZA NDB to BULIG.
DNP 9A	Climb on 016° track to 1970', turn LEFT to intercept DNP R-150 inbound to DNP VOR.
SOMON 9A	Climb on 016° track to 1970', turn RIGHT, 129° track, turn RIGHT to intercept DNP R-142 to SOMON.

UKDE/OZH
ZAPORIZHZHIA INTL

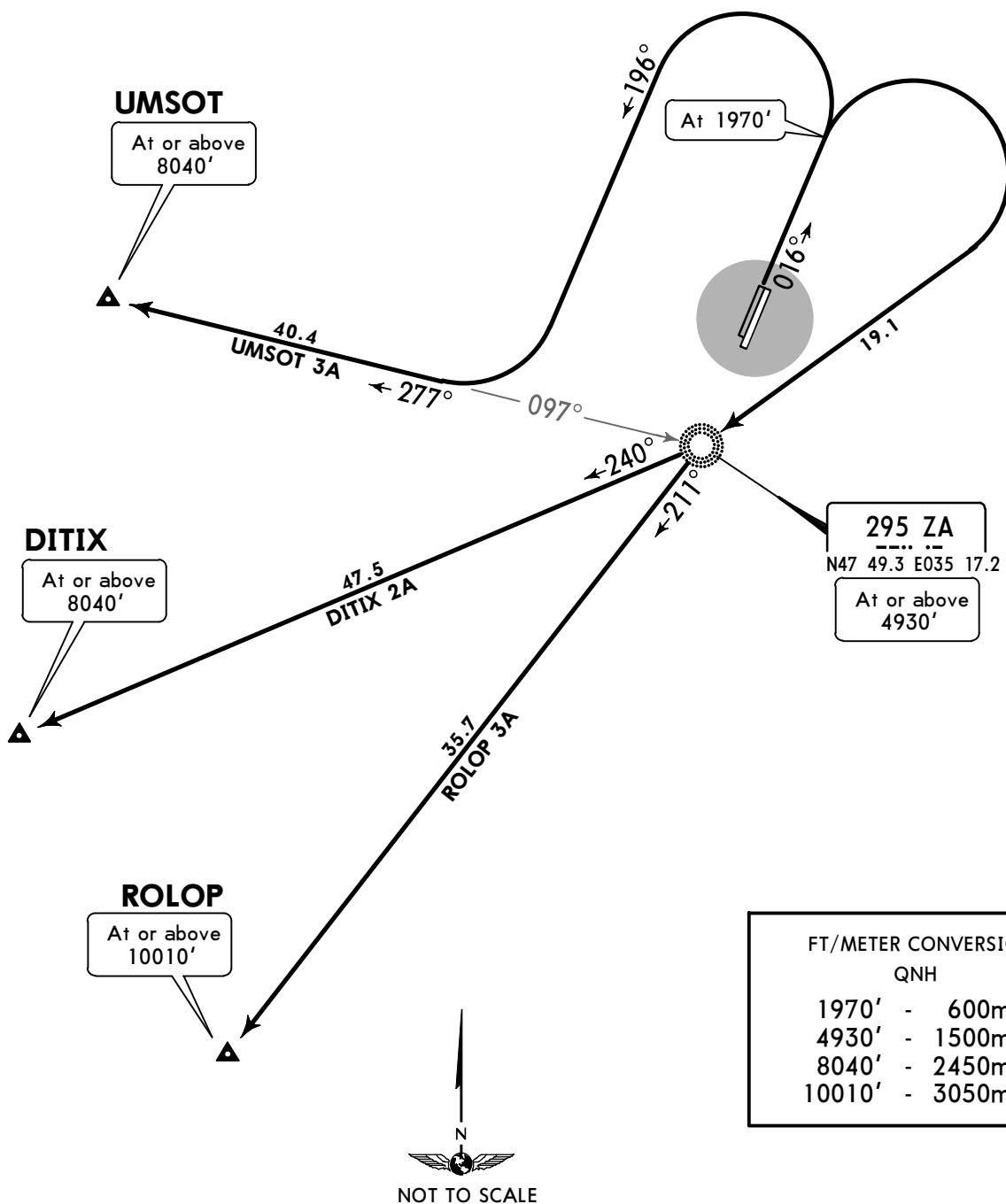
JEPPESEN 18 MAY 18 **10-3A** Eff 24 May

ZAPORIZHZHIA, UKRAINE

SID

Apt Elev 374'	Trans level: By ATC Trans alt: 10010' 1. EXPECT close-in obstacles. 2. Flights over the city are prohibited due to noise abatement.	
-------------------------	---	---

DITIX 2A [DITI2A]
ROLOP 3A [ROLO3A]
UMSOT 3A [UMSO3A]
RWY 02R DEPARTURES



FT/METER CONVERSION	
QNH	
1970'	- 600m
4930'	- 1500m
8040'	- 2450m
10010'	- 3050m

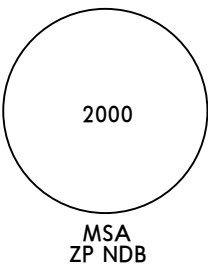
SID	ROUTING
DITIX 2A	Climb on 016° track to 1970', turn RIGHT to ZA NDB, turn RIGHT, 240° bearing from ZA NDB to DITIX.
ROLOP 3A	Climb on 016° track to 1970', turn RIGHT to ZA NDB, turn LEFT, 211° bearing from ZA NDB to ROLOP.
UMSOT 3A	Climb on 016° track to 1970', turn LEFT, track 196°, turn RIGHT to intercept 277° bearing from ZA NDB to UMSOT.

UKDE/OZH
ZAPORIZHZHIA INTL

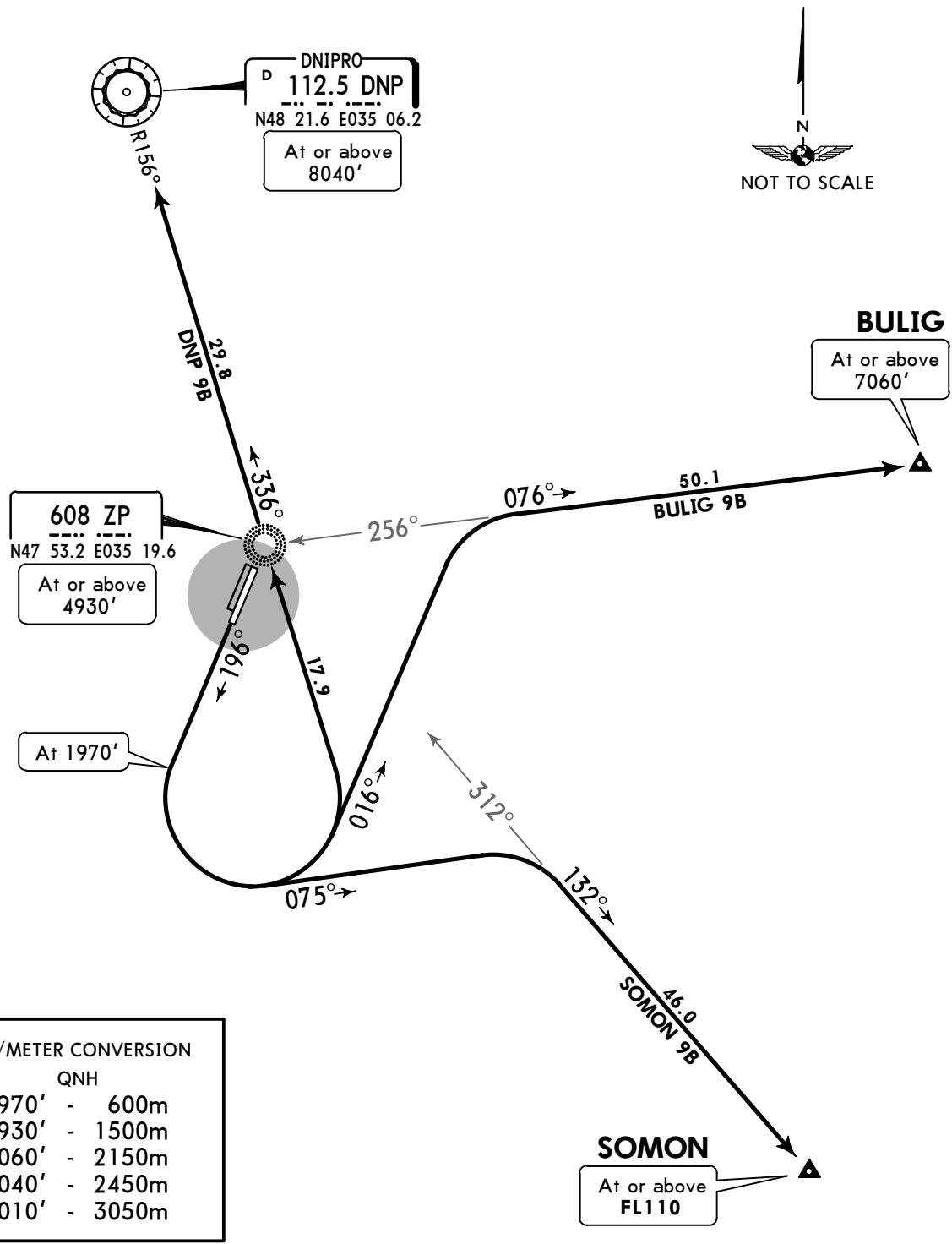
JEPPESEN 18 MAY 18 **10-3B** Eff 24 May

ZAPORIZHZHIA, UKRAINE

SID

Apt Elev 374'	Trans level: By ATC Trans alt: 10010' 1. EXPECT close-in obstacles. 2. Flights over the city are prohibited due to noise abatement.	
-------------------------	---	---

BULIG 9B [BULI9B]
DNIPRO 9B (DNP 9B) [DNP9B]
SOMON 9B [SOM09B]
RWY 20L DEPARTURES



FT/METER CONVERSION	
QNH	
1970'	- 600m
4930'	- 1500m
7060'	- 2150m
8040'	- 2450m
10010'	- 3050m

SID	ROUTING
BULIG 9B	Climb on 196° track to 1970', turn LEFT, 016° track, turn RIGHT to intercept 076° bearing from ZP NDB to BULIG.
DNP 9B	Climb on 196° track to 1970', turn LEFT to ZP NDB, intercept DNP R-156 inbound to DNP VOR.
SOMON 9B	Climb on 196° track to 1970', turn LEFT, 075° track, turn RIGHT to intercept 132° bearing from ZP NDB to SOMON.

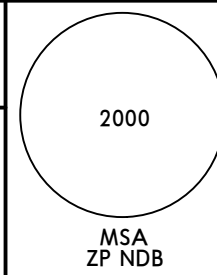
UKDE/OZH
ZAPORIZHZHIA INTL

JEPPESEN ZAPORIZHZHIA, UKRAINE
 18 MAY 18 **10-3C** Eff 24 May

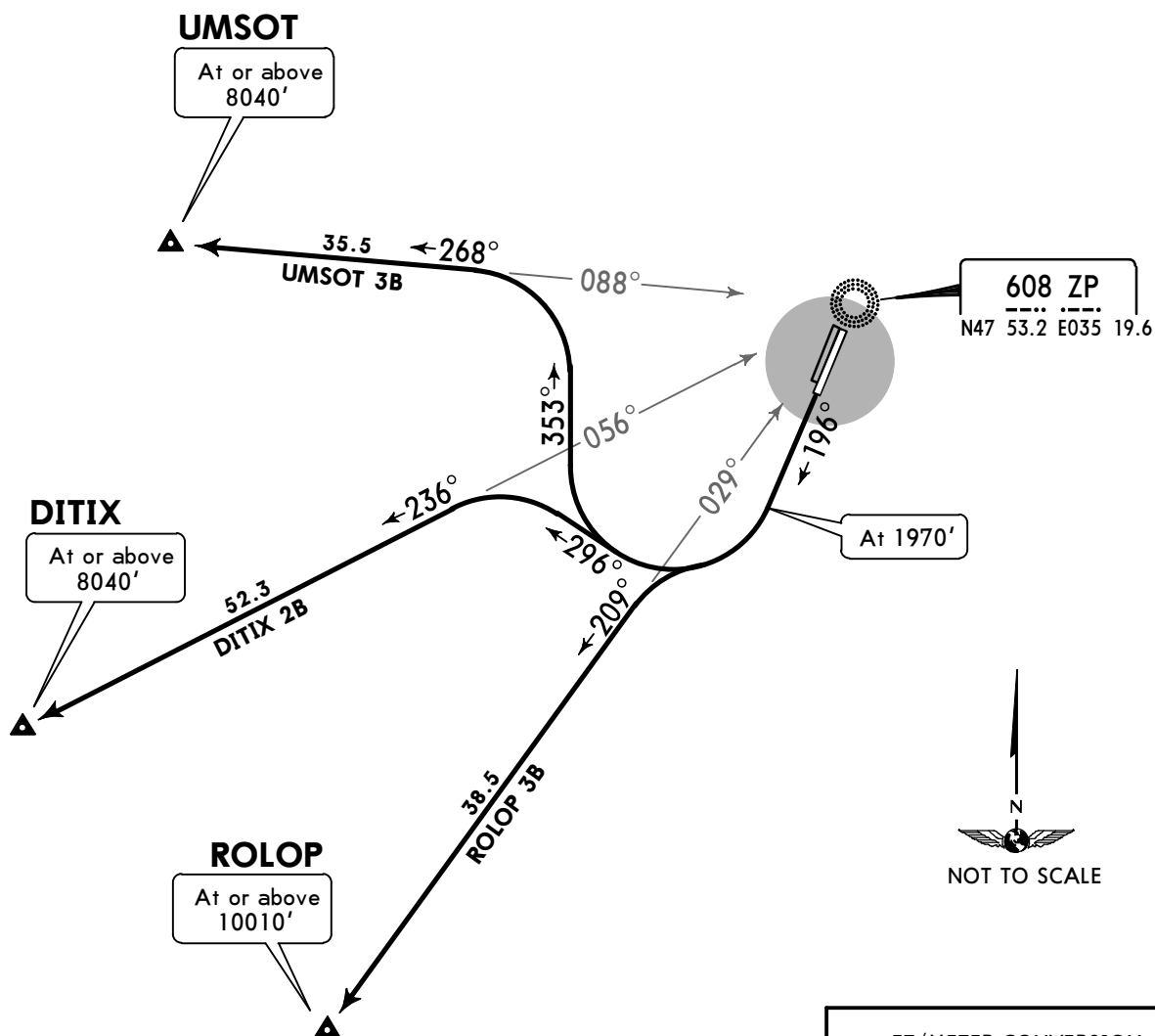
SID

Apt Elev
374'

Trans level: By ATC Trans alt: 10010'
 1. EXPECT close-in obstacles.
 2. Flights over the city are prohibited due to noise abatement.



DITIX 2B [DITI2B]
ROLOP 3B [ROLO3B]
UMSOT 3B [UMSO3B]
RWY 20L DEPARTURES



FT/METER CONVERSION
 QNH

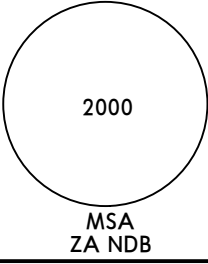
1970'	-	600m
4930'	-	1500m
8040'	-	2450m
10010'	-	3050m

DITIX 2B, UMSOT 3B
 These SIDs require a minimum climb gradient of 7.0% up to 4930'.

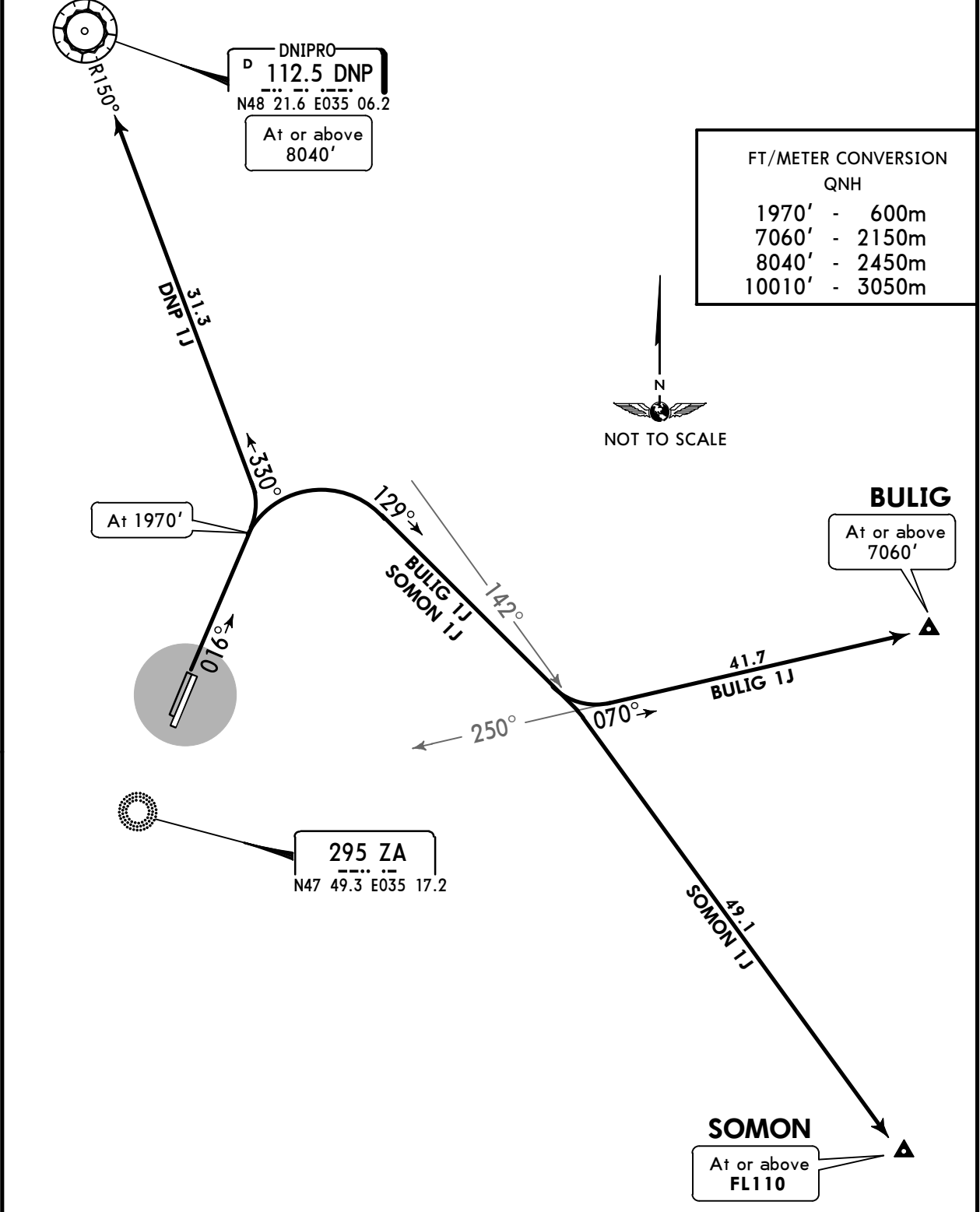
Gnd speed-KT	75	100	150	200	250	300
7.0% V/V (fpm)	532	709	1063	1418	1772	2127

SID	ROUTING
DITIX 2B	Climb on 196° track to 1970', turn RIGHT, 296° track, turn LEFT to intercept 236° bearing from ZP NDB to DITIX.
ROLOP 3B	Climb on 196° track to 1970', turn RIGHT to intercept 209° bearing from ZP NDB to ROLOP.
UMSOT 3B	Climb on 196° track to 1970', turn RIGHT, 353° track, turn LEFT to intercept 268° bearing from ZP NDB to UMSOT.

UKDE/OZH
ZAPORIZHZHIA INTL

Apt Elev 374'	Trans level: By ATC Trans alt: 10010' 1. EXPECT close-in obstacles. 2. Flights over the city are prohibited due to noise abatement.	
-------------------------	---	---

BULIG 1J [BULI1J]
DNIPRO 1J (DNP 1J) [DNP1J]
SOMON 1J [SOMO1J]
RWY 02L DEPARTURES



SID	ROUTING
BULIG 1J	Climb on 016° track to 1970', turn RIGHT, 129° track, turn LEFT to intercept 070° bearing from ZA NDB to BULIG.
DNP 1J	Climb on 016° track to 1970', turn LEFT to intercept DNP R-150 inbound to DNP VOR.
SOMON 1J	Climb on 016° track to 1970', turn RIGHT, 129° track, turn RIGHT to intercept DNP R-142 to SOMON.

CHANGES: New chart.

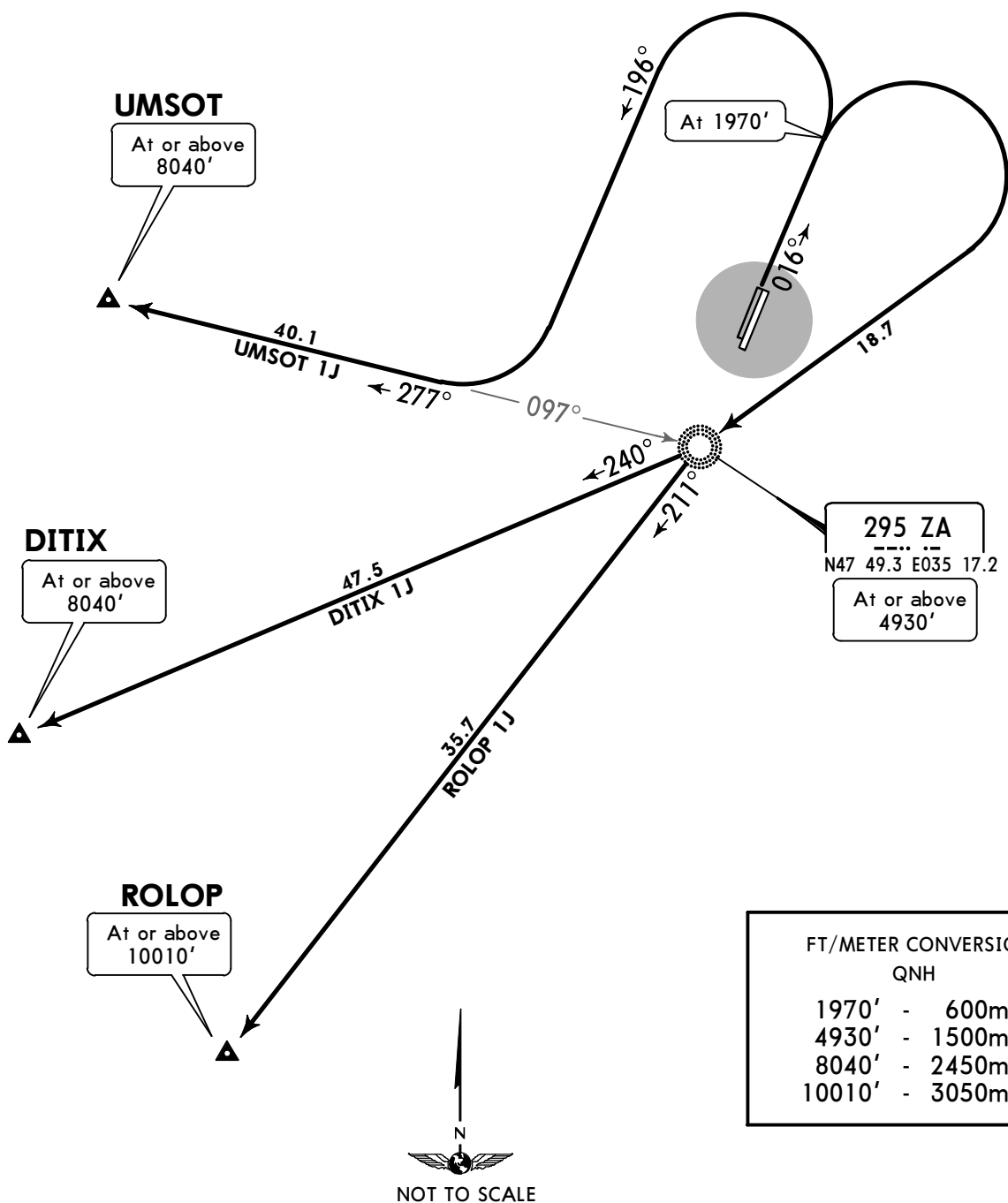
UKDE/OZH
ZAPORIZHZHIA INTL

JEPPESEN ZAPORIZHZHIA, UKRAINE
 18 MAY 18 **10-3E** Eff 24 May

SID

Apt Elev 374'	Trans level: By ATC Trans alt: 10010' 1. EXPECT close-in obstacles. 2. Flights over the city are prohibited due to noise abatement.	<div style="border: 1px solid black; border-radius: 50%; width: 80px; height: 80px; margin: 0 auto; display: flex; align-items: center; justify-content: center;"> 2000 </div> MSA ZA NDB
-------------------------	---	--

DITIX 1J [DITI1J]
ROLOP 1J [ROLO1J]
UMSOT 1J [UMSO1J]
RWY 02L DEPARTURES



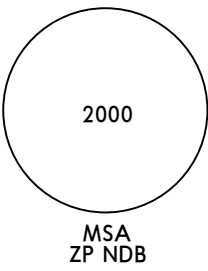
FT/METER CONVERSION	
QNH	
1970'	- 600m
4930'	- 1500m
8040'	- 2450m
10010'	- 3050m

SID	ROUTING
DITIX 1J	Climb on 016° track to 1970', turn RIGHT to ZA NDB, turn RIGHT, 240° bearing from ZA NDB to DITIX.
ROLOP 1J	Climb on 016° track to 1970', turn RIGHT to ZA NDB, turn LEFT, 211° bearing from ZA NDB to ROLOP.
UMSOT 1J	Climb on 016° track to 1970', turn LEFT, track 196°, turn RIGHT to intercept 277° bearing from ZA NDB to UMSOT.

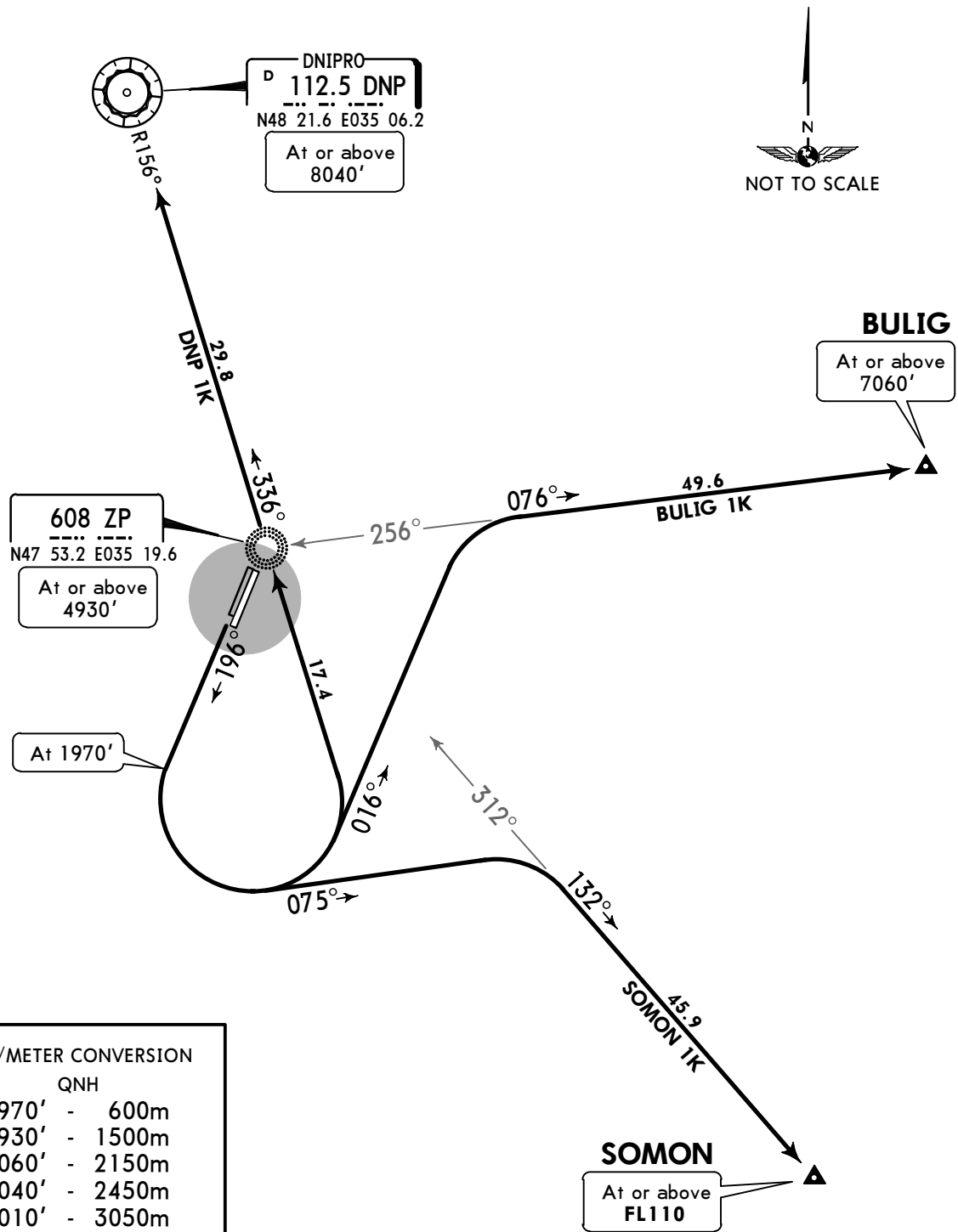
UKDE/OZH
ZAPORIZHZHIA INTL

JEPPESEN ZAPORIZHZHIA, UKRAINE
 18 MAY 18 **10-3F** Eff 24 May

SID

Apt Elev 374'	Trans level: By ATC Trans alt: 10010' 1. EXPECT close-in obstacles. 2. Flights over the city are prohibited due to noise abatement.	 2000 MSA ZP NDB
-------------------------	---	--

BULIG 1K [BULI1K]
DNIPRO 1K (DNP 1K) [DNP1K]
SOMON 1K [SOMO1K]
RWY 20R DEPARTURES



FT/METER CONVERSION	
QNH	
1970'	- 600m
4930'	- 1500m
7060'	- 2150m
8040'	- 2450m
10010'	- 3050m

SID	ROUTING
BULIG 1K	Climb on 196° track to 1970', turn LEFT, 016° track, turn RIGHT to intercept 076° bearing from ZP NDB to BULIG.
DNP 1K	Climb on 196° track to 1970', turn LEFT to ZP NDB, intercept DNP R-156 inbound to DNP VOR.
SOMON 1K	Climb on 196° track to 1970', turn LEFT, 075° track, turn RIGHT to intercept 132° bearing from ZP NDB to SOMON.

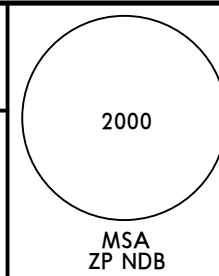
UKDE/OZH
ZAPORIZHZHIA INTL

JEPPESEN ZAPORIZHZHIA, UKRAINE
 18 MAY 18 **10-3G** Eff 24 May

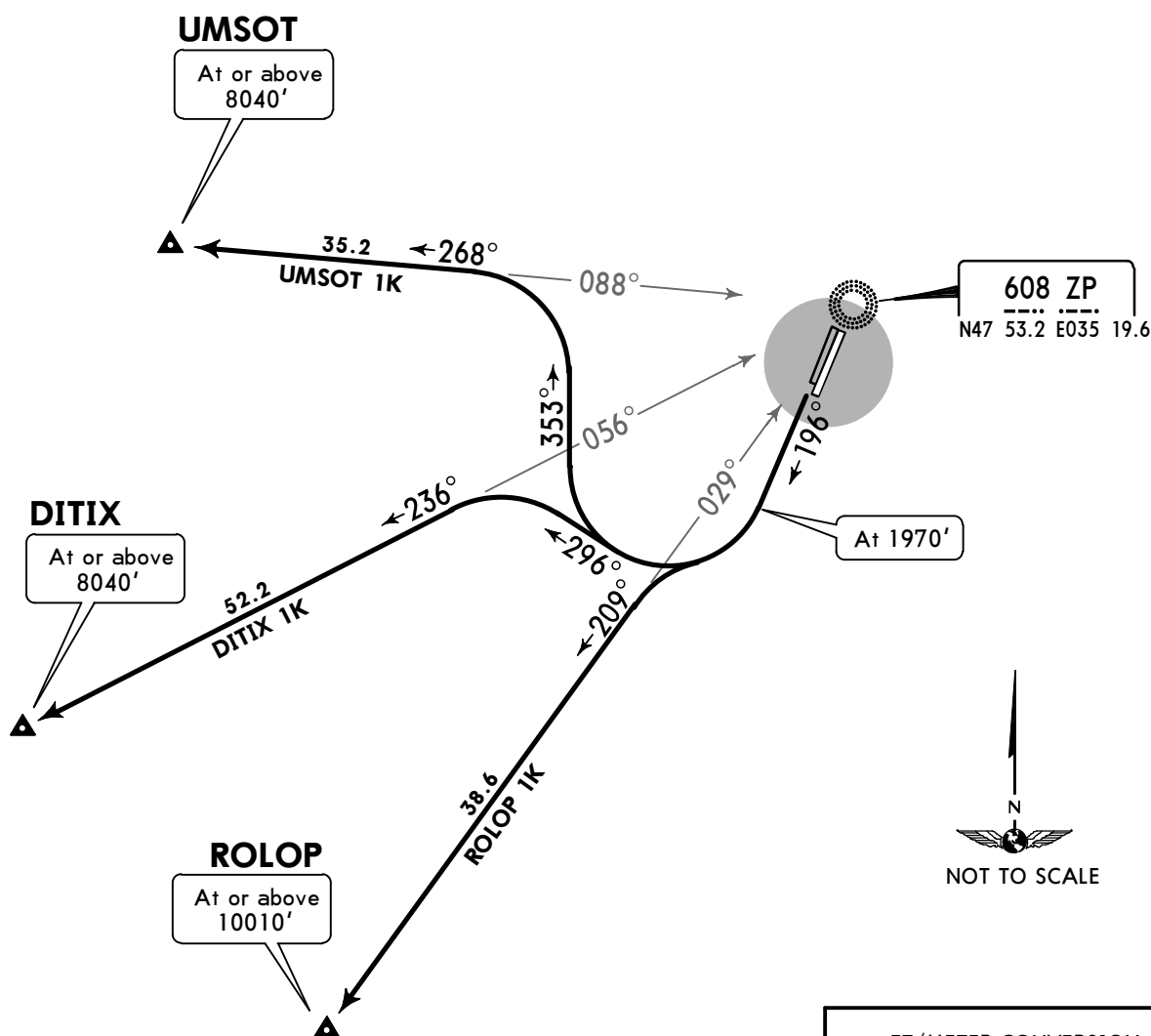
SID

Apt Elev
374'

Trans level: By ATC Trans alt: 10010'
 1. EXPECT close-in obstacles.
 2. Flights over the city are prohibited due to noise abatement.



DITIX 1K [DITI1K]
ROLOP 1K [ROLO1K]
UMSOT 1K [UMSO1K]
RWY 20R DEPARTURES



FT/METER CONVERSION
 QNH

1970'	-	600m
4930'	-	1500m
8040'	-	2450m
10010'	-	3050m

DITIX 1K, UMSOT 1K
 These SIDs require a minimum climb gradient of 7.0% up to 4930'.

Gnd speed-KT	75	100	150	200	250	300
7.0% V/V (fpm)	532	709	1063	1418	1772	2127

SID	ROUTING
DITIX 1K	Climb on 196° track to 1970', turn RIGHT, 296° track, turn LEFT to intercept 236° bearing from ZP NDB to DITIX.
ROLOP 1K	Climb on 196° track to 1970', turn RIGHT to intercept 209° bearing from ZP NDB to ROLOP.
UMSOT 1K	Climb on 196° track to 1970', turn RIGHT, 353° track, turn LEFT to intercept 268° bearing from ZP NDB to UMSOT.

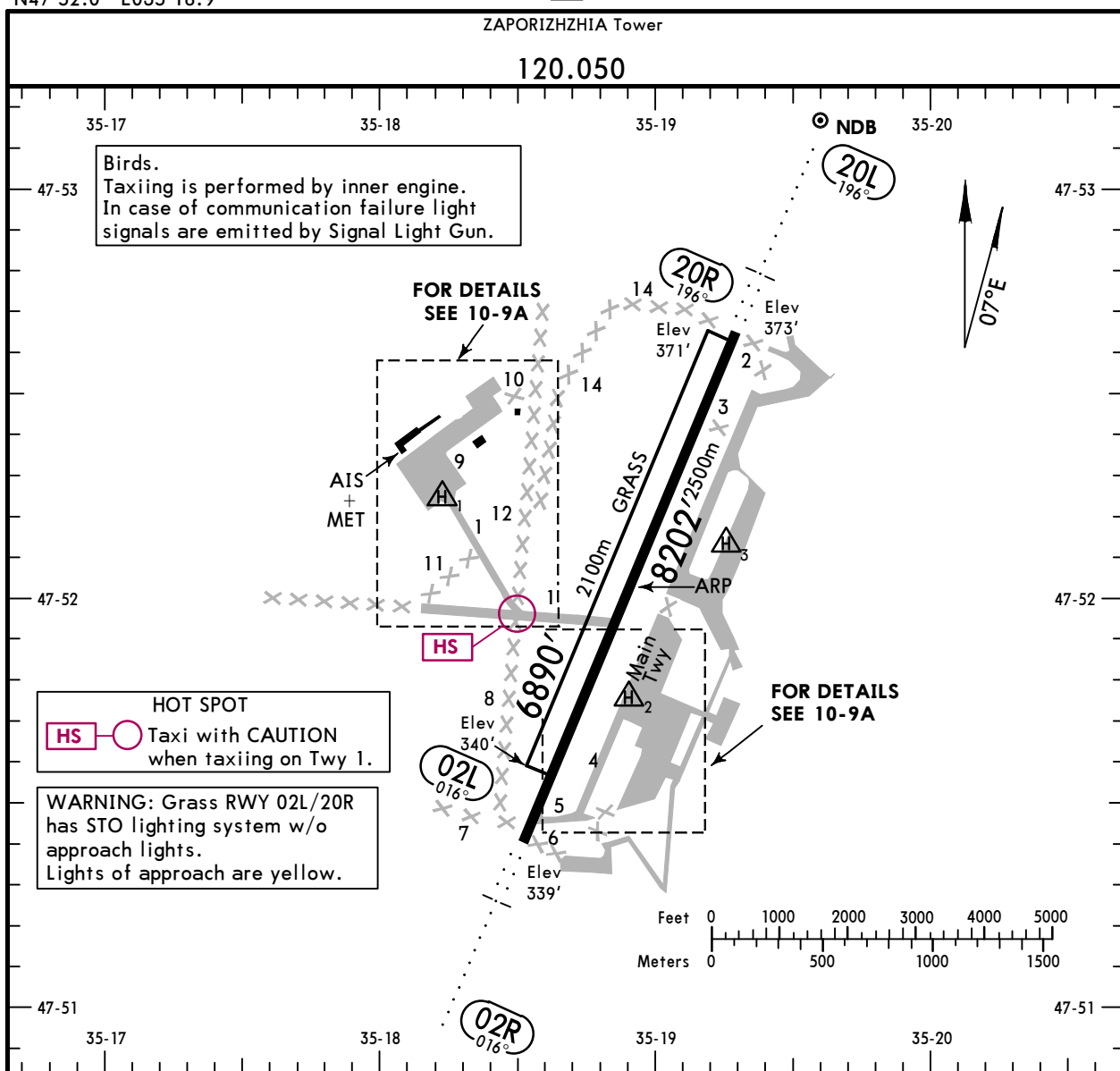
UKDE/OZH

Apt Elev **374'**
N47 52.0 E035 18.9

JEPPESSEN ZAPORIZHZHIA, UKRAINE

18 MAY 18 **(10-9)** Eff 24 May

ZAPORIZHZHIA INTL



ADDITIONAL RUNWAY INFORMATION

RWY	USABLE LENGTHS	TAKE-OFF	WIDTH
	Threshold	Glide Slope	
02R 20L	RL (100m) ALS	RVR	138' 42m
		7170' 2185m 6987' 2130m	
02L 20R	Grass runway		279' 85m

① TAKE-OFF RUN AVAILABLE

RWY 02R:

From rwy head 8202' (2500m)
twy 1 int 4724' (1440m)

RWY 20L:

From rwy head 8202' (2500m)
twy 1 int 3478' (1060m)

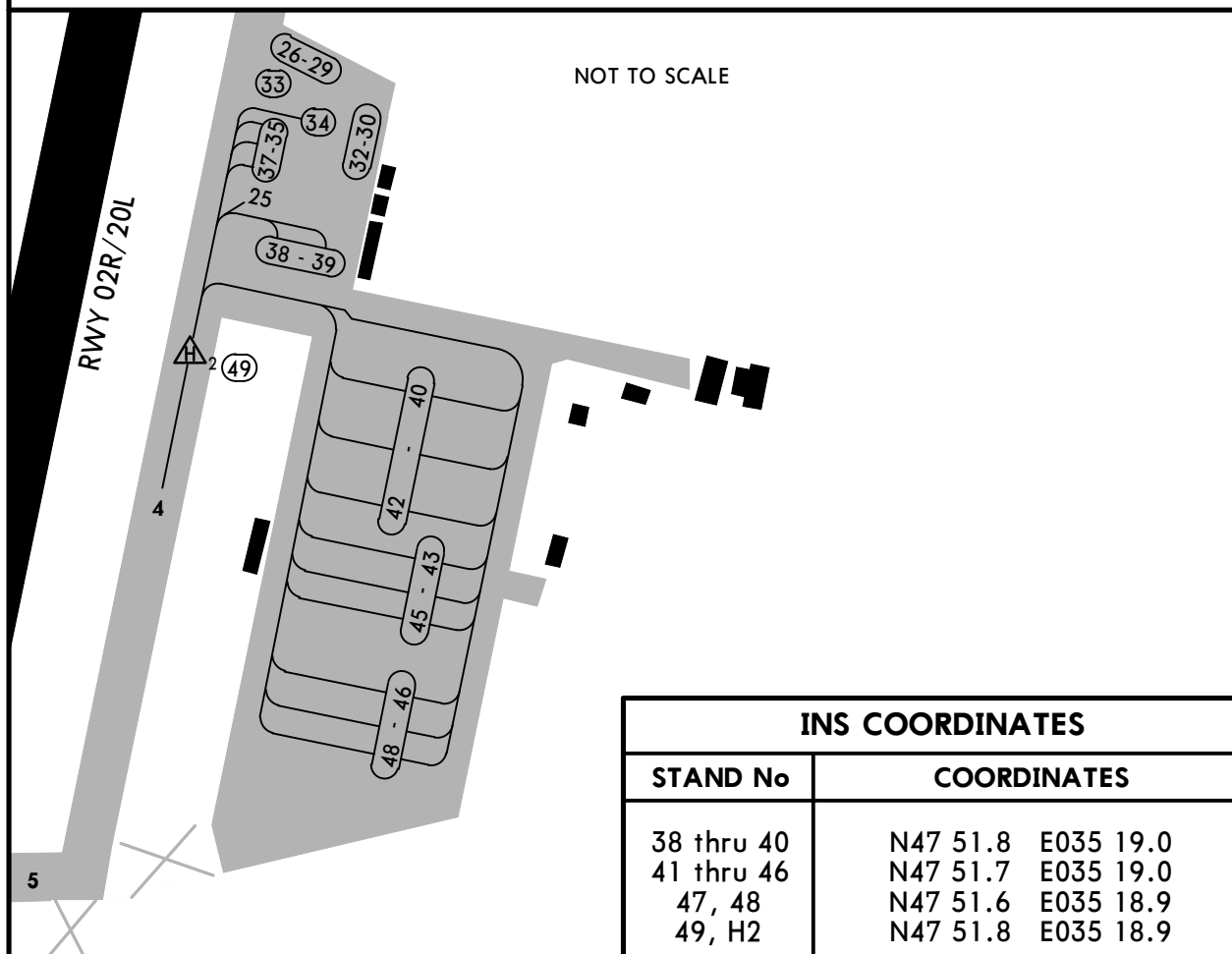
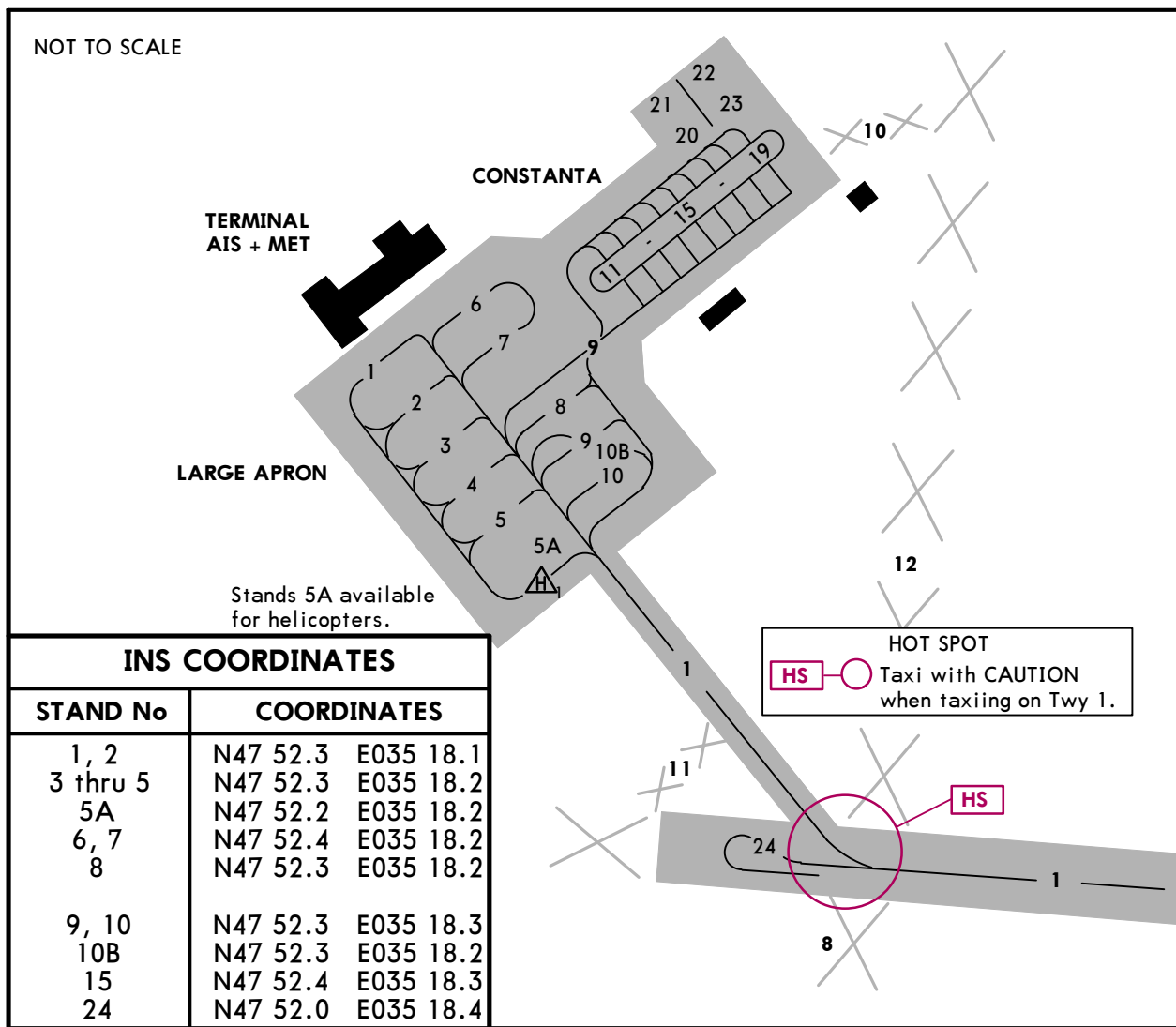
Standard

TAKE-OFF

	Main rwy 02R/20L Low Visibility Take-off	All rwys
	Day: RL & RCLM Night: RL	Day: RL or RCLM Night: RL
		Adequate vis ref (Day only)
A		
B		
C	RVR 300m	400m
D		500m

UKDE/OZH

JEPPESSEN ZAPORIZHZHIA, UKRAINE
 18 MAY 18 (10-9A) Eff 24 May ZAPORIZHZHIA INTL



CHANGES: Rwy designation.

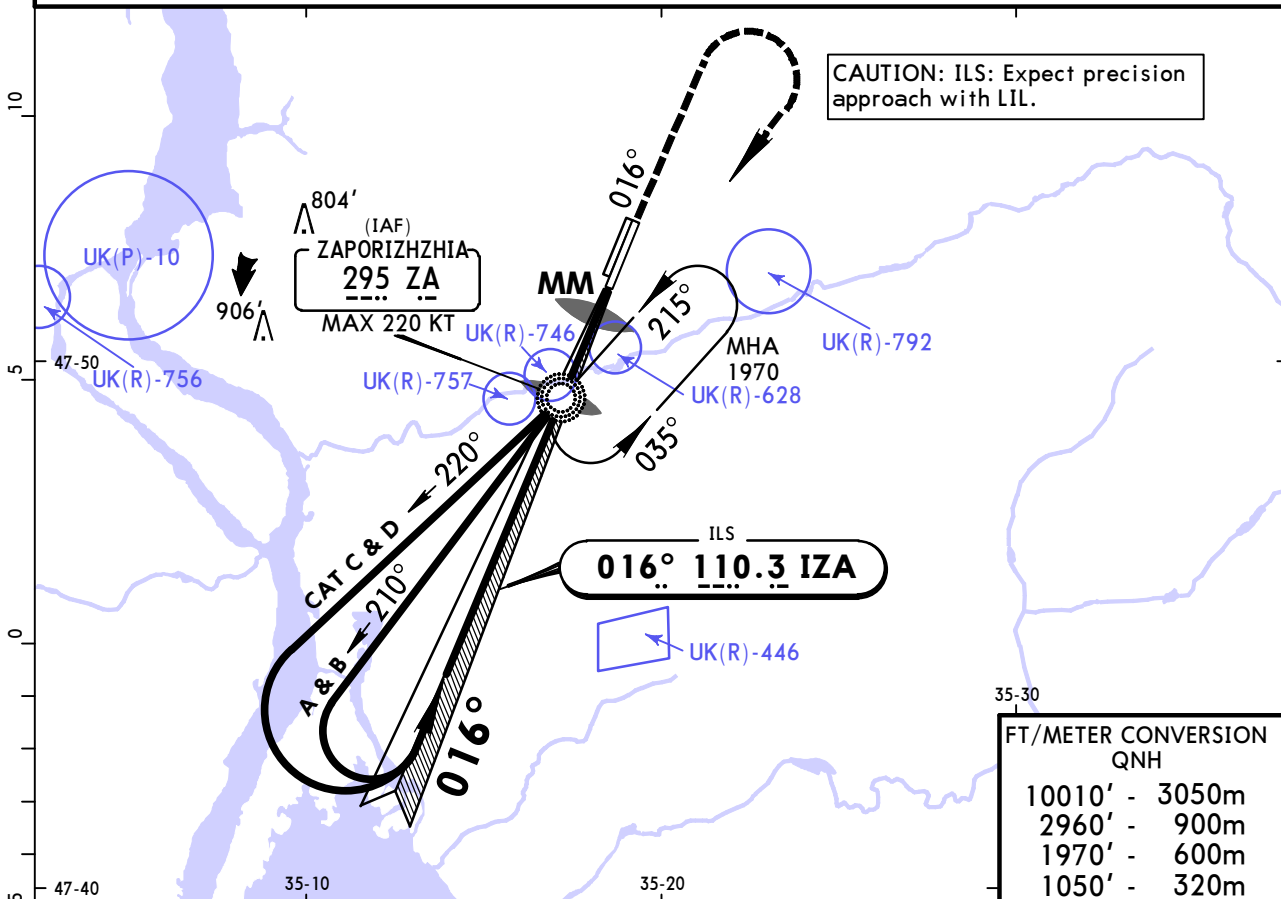
© JEPPESSEN, 1998, 2018. ALL RIGHTS RESERVED.

UKDE/OZH
ZAPORIZHZHIA INTL

JEPPESEN
28 SEP 18 (11-1)

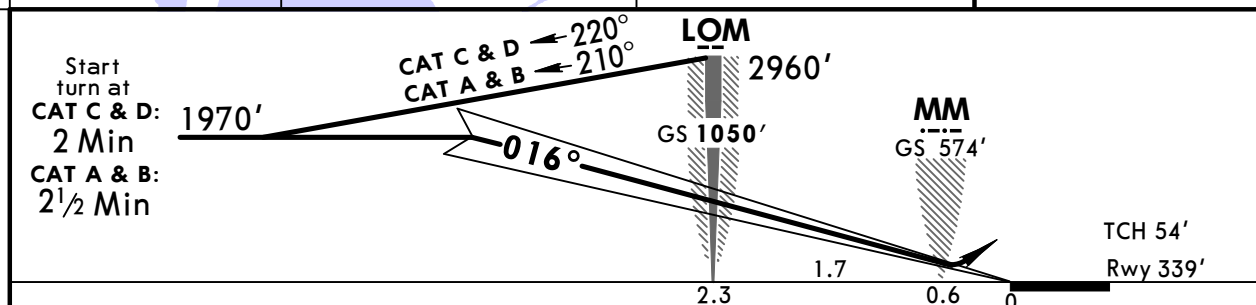
ZAPORIZHZHIA, UKRAINE
ILS Rwy 02R

ZAPORIZHZHIA Radar (APP) 119.2				ZAPORIZHZHIA Tower 120.050	
LOC IZA 110.3	Final Apch Crs 016°	GS LOM 1050' (711')	ILS DA(H) Refer to Minimums	Apt Elev 374'	2000 MSA ZA NDB
MISSED APCH: Climb on 016° to 1970', then turn RIGHT climbing to 2960' to NDB, then according to chart.					
Alt Set: hPa		Rwy Elev: 12 hPa	Trans level: By ATC		Trans alt: 10010'



FT/METER CONVERSION
QNH

10010'	3050m
2960'	900m
1970'	600m
1050'	320m



Gnd speed-Kts	70	90	100	120	140	160	ALS	1970' ↑ on 016°
GS	2.70°	334	430	478	573	764		

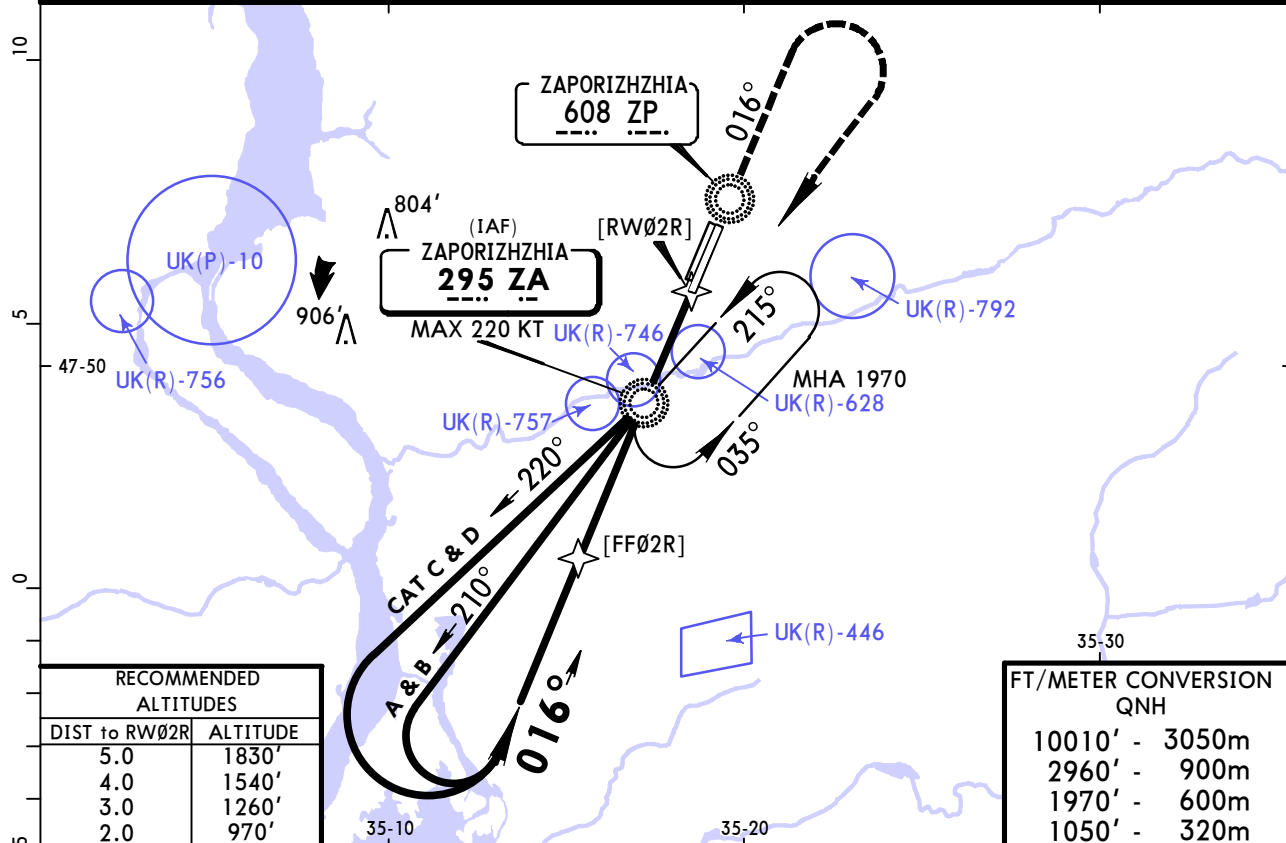
PANS OPS	Standard STRAIGHT-IN LANDING RWY 02R		CIRCLE-TO-LAND			
	ILS		LOC (GS out)			
	DA(H) A: 559' (220') C: 579' (240')					
	B: 569' (230') D: 588' (249')					
	FULL		ALS out			
A	RVR 1000m	RVR 1200m	NOT AUTHORIZED	Max Kts. 100	MDA(H) 790' (416')	VIS 1500m
B				135	880' (506')	1600m
C				180	1130' (756')	2400m
D				205	1140' (766')	3600m

UKDE/OZH ZAPORIZHZHIA INTL

JEPPESEN ZAPORIZHZHIA, UKRAINE
18 MAY 18 (16-1) **Eff 24 May**

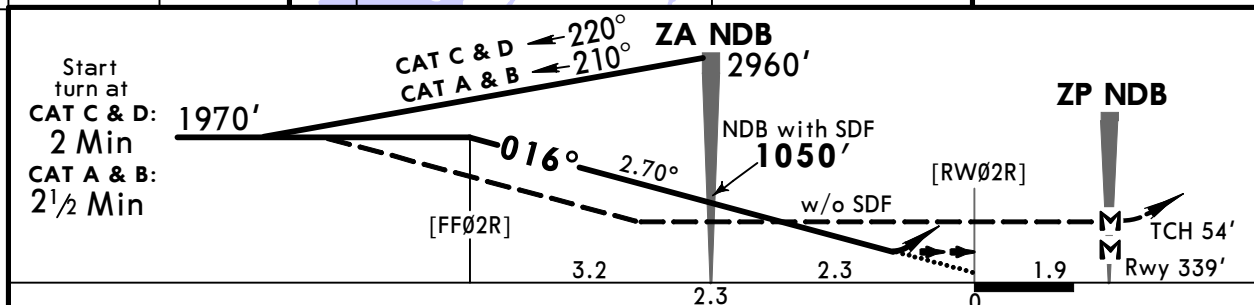
NDB Rwy 02R

ZAPORIZHZHIA Radar (APP) 119.2			ZAPORIZHZHIA Tower 120.050		
NDB ZA 295	Final Apch Crs 016°	With SDF at ZA NDB Minimum Alt ZA NDB 1050' (711')	With ZA NDB (CONDITIONAL) DA/MDA(H) 730' (391')	Apt Elev 374'	2000
		W/o ZA NDB Minimum Alt No FAF	W/o ZA NDB (CONDITIONAL) DA/MDA(H) 790' (451')		
MISSED APCH: Climb on 016° to 1970', then turn RIGHT climbing to 2960' to ZA NDB, then according to chart.					MSA ZA NDB
Alt Set: hPa		Rwy Elev: 12 hPa		Trans level: By ATC	
				Trans alt: 10010'	



RECOMMENDED ALTITUDES	
DIST to RW02R	ALTITUDE
5.0	1830'
4.0	1540'
3.0	1260'
2.0	970'

FT/METER CONVERSION QNH	
10010'	3050m
2960'	900m
1970'	600m
1050'	320m



Gnd speed-Kts	70	90	100	120	140	160	ALS	1970'	on 016°
Descent Angle 2.70°	334	430	478	573	669	764			
MAP at ZP NDB									

PANS OPS	STRAIGHT-IN LANDING RWY 02R				CIRCLE-TO-LAND	
	with SDF at ZA NDB DA/MDA(H) 1 2 730' (391')	with SDF at ZA NDB DA/MDA(H) 1 3 730' (391')	W/o ZA NDB DA/MDA(H) 1 2 790' (451')	W/o ZA NDB 3 non-CDFA MDA(H) 790' (451')	Max Kts	MDA(H) VIS
A	RVR 1500m		RVR 1500m	RVR 2100m	100	840' (466') 4 1500m
B		RVR 1600m	RVR 1800m	RVR 2300m	135	880' (506') 4 1600m
C	RVR 1600m			RVR 2500m	180	1130' (756') 4 2400m
D	RVR 1800m				205	1140' (766') 3600m

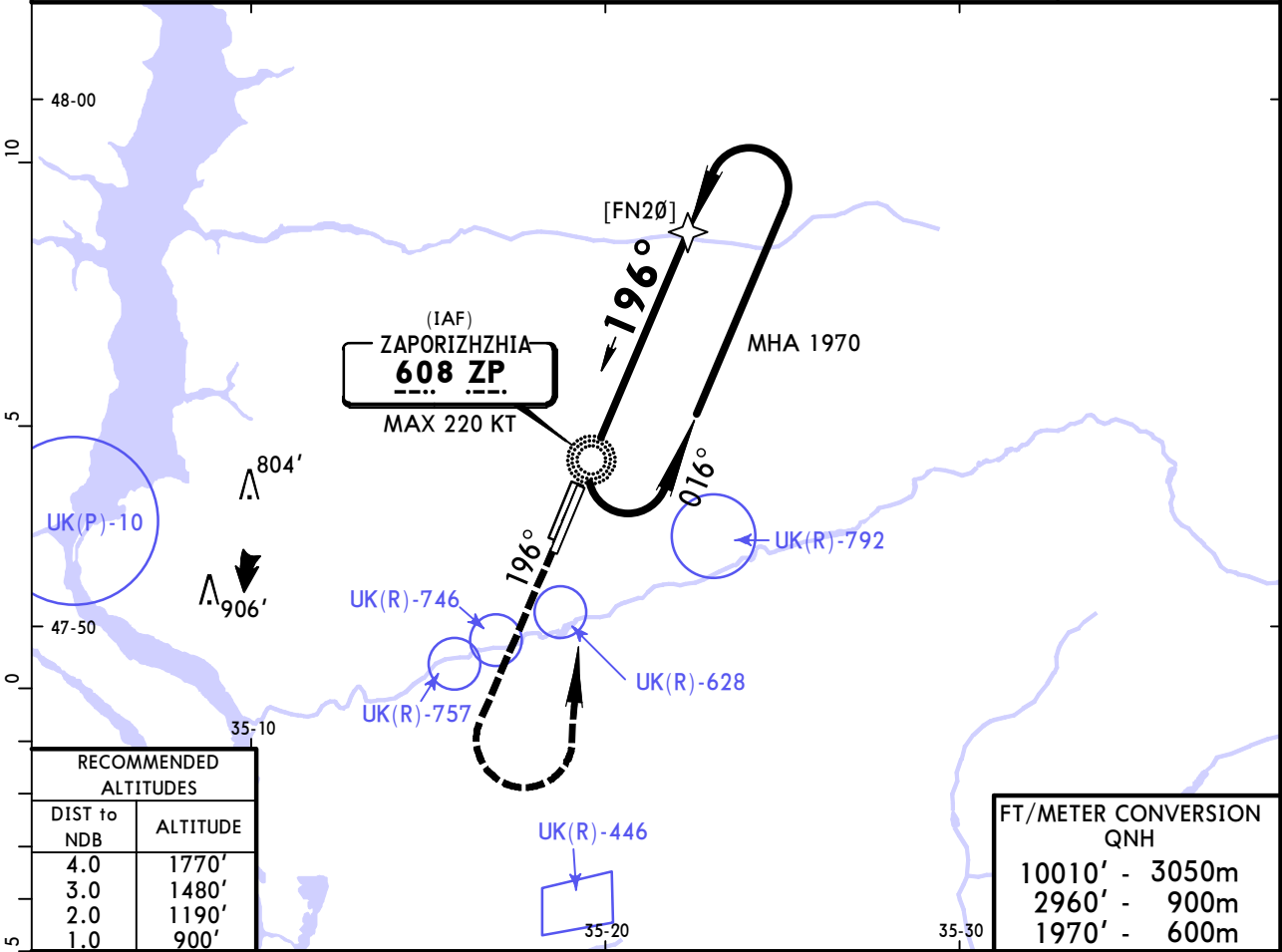
1 CDFA **2** with [FF02R] **3** w/o [FF02R] **4** or higher straight-in minimums.
CHANGES: Rwy designation. Communication. ZP NDB. © JEPPESEN, 2004, 2018. ALL RIGHTS RESERVED.

UKDE/OZH ZAPORIZHZHIA INTL

JEPPESEN 18 MAY 18 **(16-2)** **Eff 24 May**

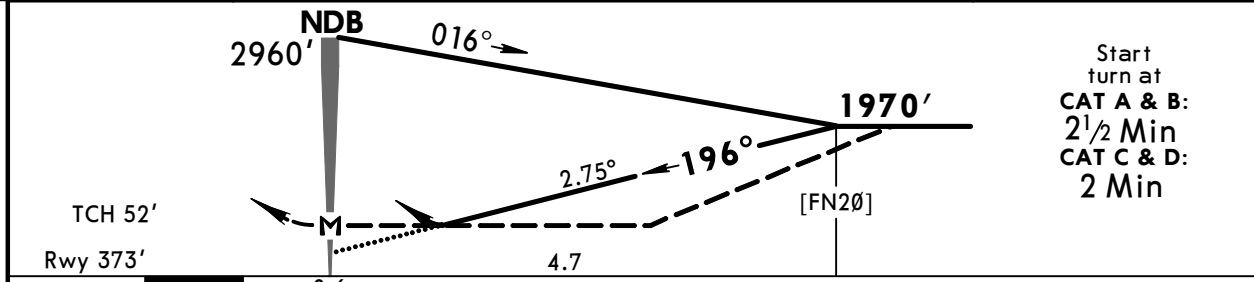
ZAPORIZHZHIA, UKRAINE NDB Rwy 20L

ZAPORIZHZHIA Radar (APP)			ZAPORIZHZHIA Tower		
119.2			120.050		
NDB ZP 608	Final Apch Crs 196°	No FAF	DA/MDA(H) (CONDITIONAL) 890' (517')	Apt Elev 374'	2000
MISSED APCH: Climb on 196° to 1970', then turn LEFT climbing to 2960' to NDB, then according to chart.					
Alt Set: hPa	Rwy Elev: 14 hPa	Trans level: By ATC	Trans alt: 10010'	MSA ZP NDB	



DIST to NDB	ALTITUDE
4.0	1770'
3.0	1480'
2.0	1190'
1.0	900'

10010'	-	3050m
2960'	-	900m
1970'	-	600m



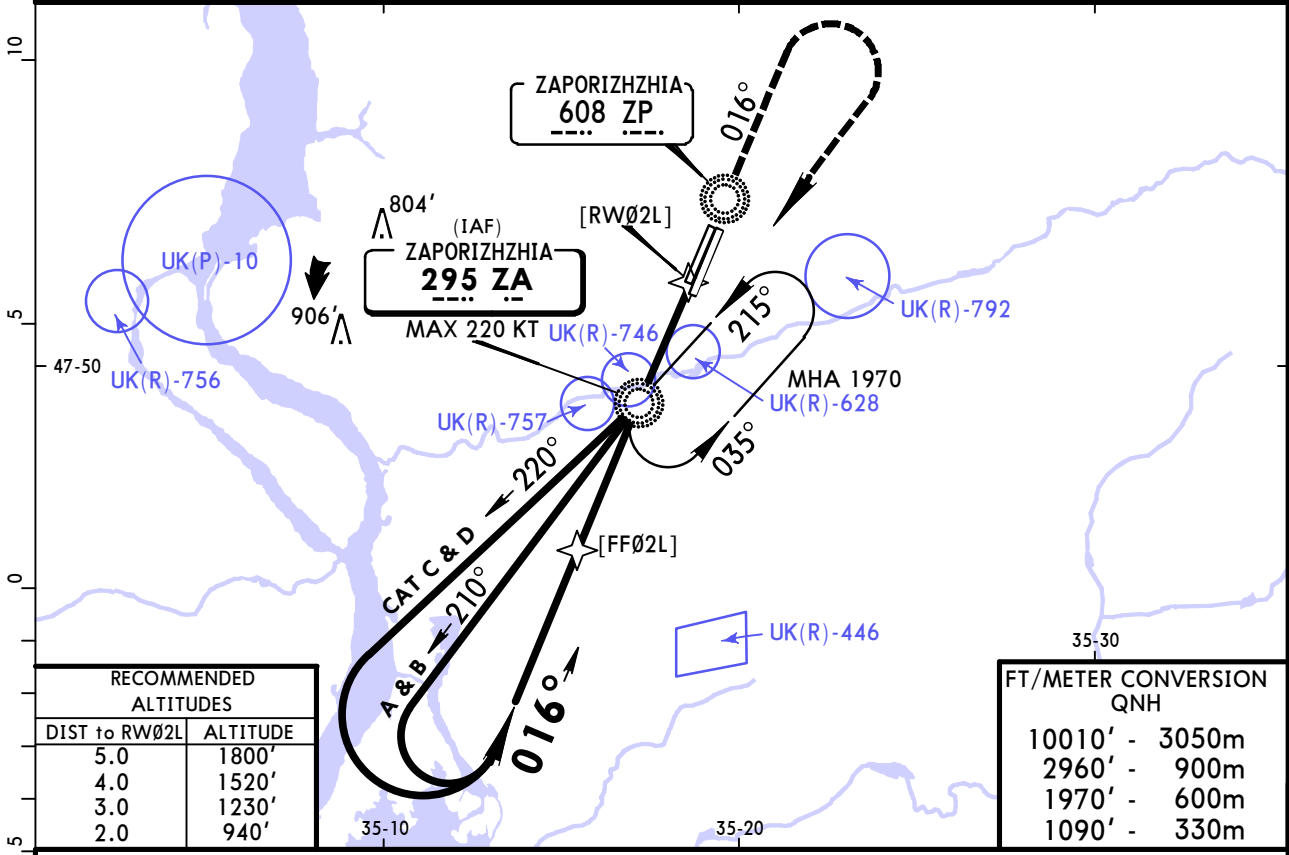
Gnd speed-Kts	70	90	100	120	140	160	ALS	1970' on 196°	
Descent Angle	2.75°	340	438	486	584	681			778
MAP at NDB									

PANS OPS	STRAIGHT-IN LANDING RWY 20L				CIRCLE-TO-LAND	
	With FN20 CDFA		W/o FN20 non-CDFA		Max Kts	MDA(H) VIS
	DA/MDA(H) 890' (517')		MDA(H) 890' (517')			
	ALS out		ALS out			
A	RVR 1500m		RVR 2300m	RVR 2600m	100	890' (516') I 1500m
B	RVR 1500m		RVR 2300m	RVR 2600m	135	890' (516') I 1600m
C	RVR 2100m	RVR 2400m	RVR 2500m	RVR 2800m	180	1130' (756') I 2400m
D	RVR 2100m	RVR 2400m	RVR 2500m	RVR 2800m	205	1140' (766') 3600m

UKDE/OZH ZAPORIZHZHIA INTL

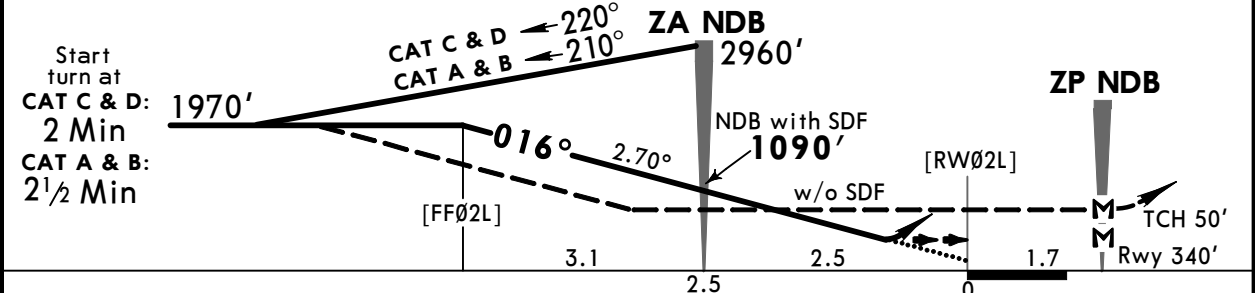
JEPPESEN ZAPORIZHZHIA, UKRAINE
18 MAY 18 **(16-3)** **Eff 24 May** **NDB GRASS Rwy 02L**

ZAPORIZHZHIA Radar (APP) 119.2			ZAPORIZHZHIA Tower 120.050		
NDB ZA 295	Final Apch Crs 016°	With SDF at ZA NDB Minimum Alt ZA NDB 1090' (750')	With ZA NDB (CONDITIONAL) DA/MDA(H) 730' (390')	Apt Elev 374'	2000
		W/o ZA NDB Minimum Alt No FAF	W/o ZA NDB (CONDITIONAL) DA/MDA(H) 790' (450')		
MISSED APCH: Climb on 016° to 1970', then turn RIGHT climbing to 2960' to ZA NDB, then according to chart.					MSA ZA NDB
Alt Set: hPa		Rwy Elev: 12 hPa		Trans level: By ATC	
				Trans alt: 10010'	

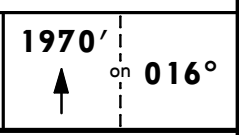


RECOMMENDED ALTITUDES	
DIST to RW02L	ALTITUDE
5.0	1800'
4.0	1520'
3.0	1230'
2.0	940'

FT/METER CONVERSION QNH	
10010'	3050m
2960'	900m
1970'	600m
1090'	330m



Gnd speed-Kts	70	90	100	120	140	160
Descent Angle 2.70°	334	430	478	573	669	764



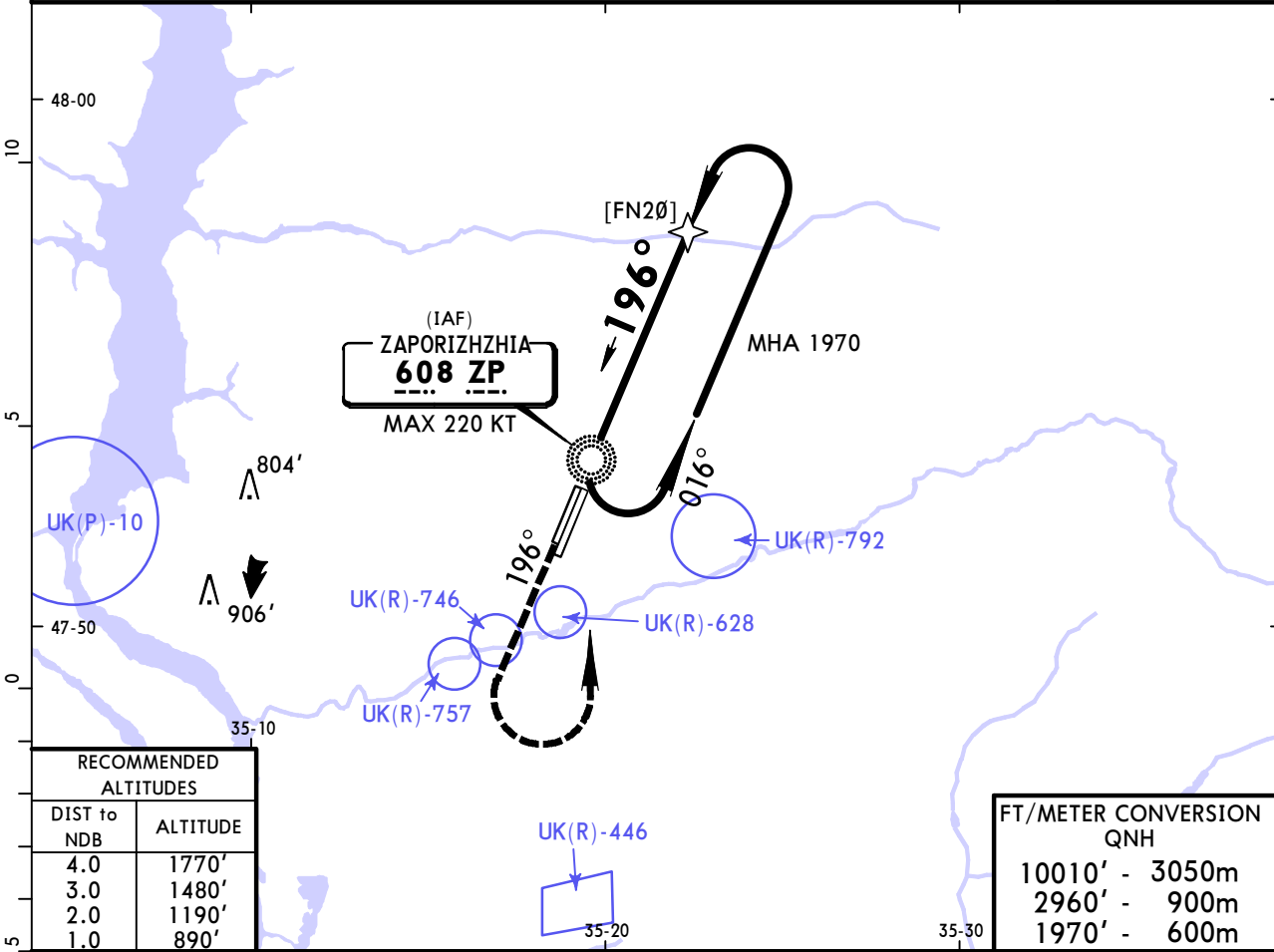
PANS OPS	STRAIGHT-IN LANDING RWY 02L				CIRCLE-TO-LAND	
	with SDF at ZA NDB CDFA DA/MDA(H) 1 730' (390')	with SDF at ZA NDB CDFA DA/MDA(H) 2 730' (390')	W/o ZA NDB CDFA DA/MDA(H) 1 790' (450')	W/o ZA NDB 2 non-CDFA MDA(H) 790' (450')	Max Kts	MDA(H) VIS
A	RVR 1500m	RVR 1800m	RVR 1500m	RVR 2300m	100	840' (466') 3 1500m
B	RVR 1500m		RVR 1500m	RVR 2300m	135	880' (506') 3 1600m
C	RVR 1800m	RVR 1800m	RVR 2100m	RVR 2500m	180	1130' (756') 3 2400m
D	RVR 1800m		RVR 2100m	RVR 2500m	205	1140' (766') 3600m

1 with [FF02L] **2** w/o [FF02L] **3** or higher straight-in minimums.

UKDE/OZH ZAPORIZHZHIA INTL

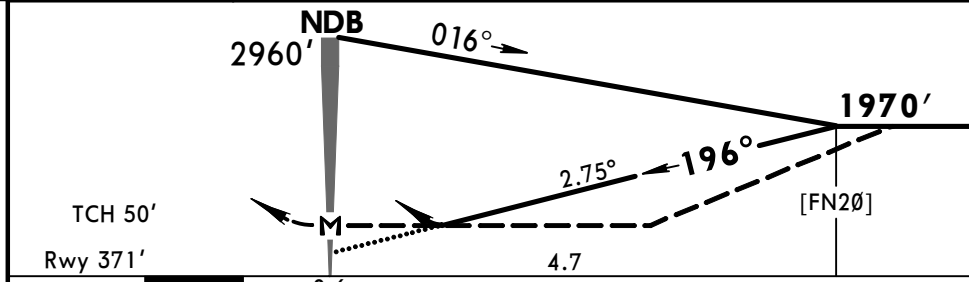
JEPPESEN ZAPORIZHZHIA, UKRAINE
18 MAY 18 (16-4) **Eff 24 May** NDB GRASS Rwy 20R

ZAPORIZHZHIA Radar (APP)			ZAPORIZHZHIA Tower		
119.2			120.050		
NDB ZP 608	Final Apch Crs 196°	No FAF	DA/MDA(H) (CONDITIONAL) 890' (519')	Apt Elev 374'	2000
MISSED APCH: Climb on 196° to 1970', then turn LEFT climbing to 2960' to NDB, then according to chart.					
Alt Set: hPa	Rwy Elev: 14 hPa	Trans level: By ATC	Trans alt: 10010'	MSA ZP NDB	



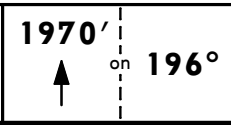
DIST to NDB	ALTITUDE
4.0	1770'
3.0	1480'
2.0	1190'
1.0	890'

10010'	-	3050m
2960'	-	900m
1970'	-	600m



Start turn at
CAT A & B:
 2½ Min
CAT C & D:
 2 Min

Gnd speed-Kts	70	90	100	120	140	160
Descent Angle 2.75°	340	438	486	584	681	778



PANS OPS	STRAIGHT-IN LANDING RWY 20R		CIRCLE-TO-LAND	
	CDFA	non-CDFA	Max Kts	MDA(H) VIS
A	DA/MDA(H) 890' (519')	MDA(H) 890' (519')	100	890' (516') I 1500m
B	RVR 1500m	RVR 2600m	135	890' (516') I 1600m
C	RVR 2400m	RVR 2800m	180	1130' (756') I 2400m
D			205	1140' (766') 3600m

I or higher straight-in minimums.

CHANGES: New procedure.

Chart changes since cycle 19-2018

ADD = added chart, REV = revised chart, DEL = deleted chart.

ACT	PROCEDURE IDENT	INDEX	REV DATE	EFF DATE
ZAPORIZHZHIA, (ZAPORIZHZHIA INTL - UKDE)				
REV	ILS RWY 02R	11-1	28 Sep 2018	
DEL	ILS RWY 20L	11-2	28 Sep 2018	

TERMINAL CHART CHANGE NOTICES

No Chart Change Notices for Airport UKDE