

General Information

Location: DNIPRO UKR
ICAO/IATA: UKDD / DNK
Lat/Long: N48° 21.43', E035° 06.03'
Elevation: 482 ft

Airport Use: Public
Daylight Savings: Observed
UTC Conversion: -2:00 = UTC
Magnetic Variation: 8.0° E

Fuel Types: Jet A-1
Repair Types: Minor Airframe, Minor Engine
Customs: Yes
Airport Type: IFR
Landing Fee: Yes
Control Tower: Yes
Jet Start Unit: No
LLWS Alert: No
Beacon: No

Sunrise: 0442 Z
Sunset: 1406 Z

Runway Information

Runway: 08
Length x Width: 9377 ft x 144 ft
Surface Type: concrete
TDZ-Elev: 478 ft
Lighting: Edge, ALS

Runway: 26
Length x Width: 9377 ft x 144 ft
Surface Type: concrete
TDZ-Elev: 473 ft
Lighting: Edge, ALS

Communication Information

ATIS: 134.900 Non-English
ATIS: 130.900
Dnipro Tower: 118.600
Dnipro Ground: 121.800
Dnipro Approach: 132.300
Dnipro Information: 122.700 Flight Info Service
Dnipro Radar ACC: 119.400

UKDD/DNK

JEPPESEN

DNIPRO, UKRAINE

DNIPROPETROVS'K INTL 18 MAY 18

10-1P

Eff 24 May

AIRPORT BRIEFING

1. GENERAL

1.1. ATIS

ATIS 130.9
134.9 (Russian)

1.2. NOISE ABATEMENT PROCEDURES

1.2.1. TAXIING

Taxiing of three engine ACFT to be done with two side engines.
2300-0600LT power while taxiing from stands 3, 5, 8 and 9 shall not be more than 0.6 of rated power.

1.2.2. REVERSE THRUST

Use only for safety reasons.

1.2.3. RUN-UP TESTS

Run-ups with take-off power are prohibited.

1.2.4. AUXILIARY POWER UNIT (APU)

Use limited to +/- 30 minutes before departure/after landing.

1.3. LOW VISIBILITY PROCEDURES (LVP)

LVP shall be applied for take-off only and when RVR is less than 600m.
Pilots will be informed about the beginning of the procedure via ATIS or by ATC.
Taxiing in the maneuvering zone is permitted only for one ACFT at a time.

1.4. TAXI PROCEDURES

Taxiing to/from stands with Follow-me car only.
Taxiing on own thrust via TWY 7 is permitted only for ACFT of less than code 4C at daytime, in other cases taxiing via TWY 7 is carried out only by towing.

1.5. COMMUNICATION FAILURE

In case of communication failure light signals are emitted by Signal Light Gun.

1.6. OTHER INFORMATION

Birds in vicinity of APT.

UKDD/DNK

JEPPESEN

DNIPRO, UKRAINE

DNIPROPETROVS'K INTL 18 MAY 18

10-1P1

Eff 24 May

AIRPORT BRIEFING

2. ARRIVAL

2.1. CONTINUOUS DESCENT OPERATIONS

CDO are authorized only if there is no system degradation that may affect a GNSS or ILS operation.

ATC will issue further descent instruction prior to the CDO flight reaching 900m (3000') from the last assigned level so as to prevent leveling off.

Pilots shall maintain MAX IAS 220 KT at a distance of 20 track miles from touchdown.

Specified minimum levels must be adhered to unless specifically cancelled by ATC.

3. DEPARTURE

3.1. DE-ICING

Available at D1, D3 and stand 16.

3.2. START-UP

Start-up of engine during towing is prohibited.

UKDD/DNK DNIPROPETROVS'K INTL



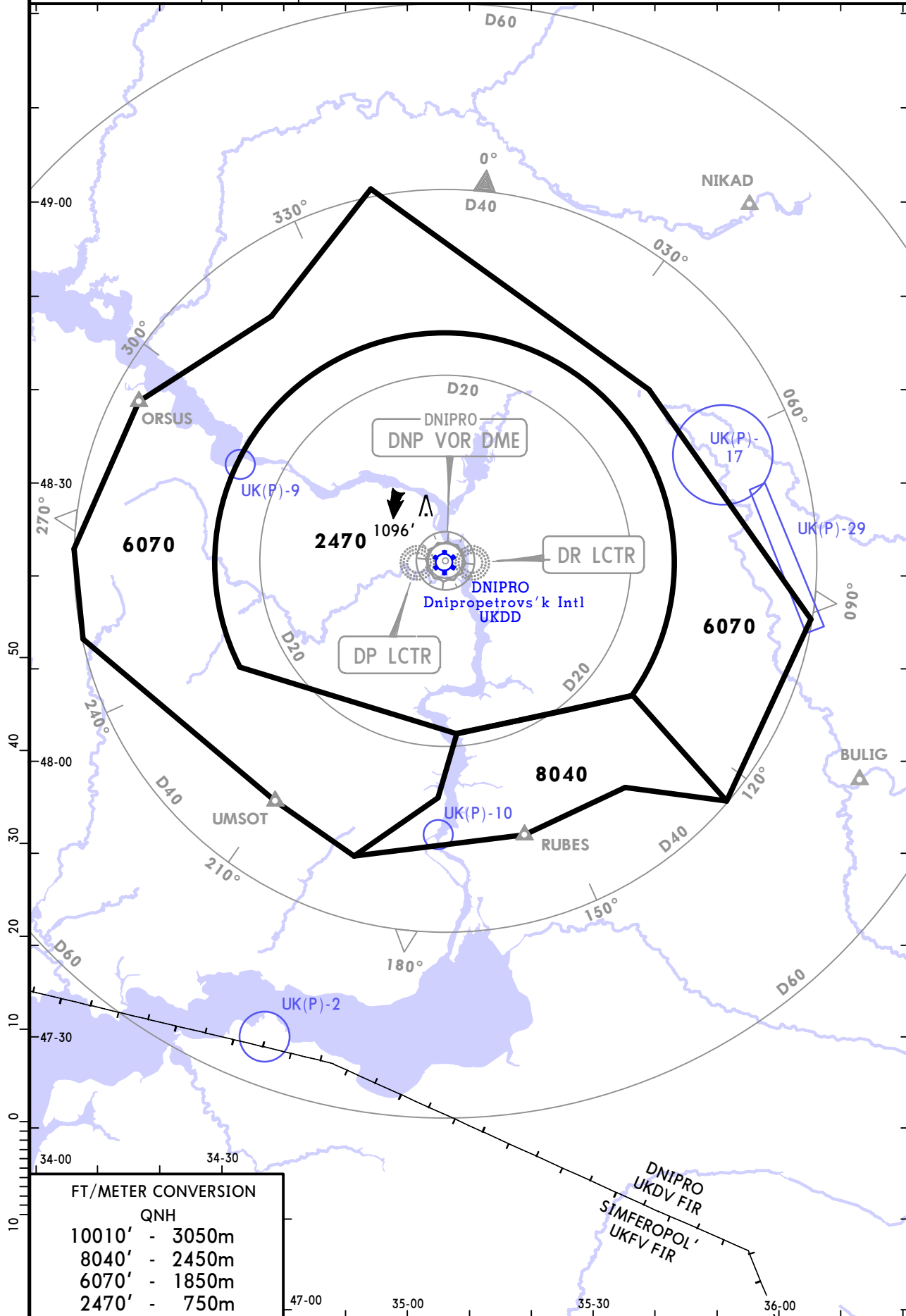
10-1R

18 MAY 18
Eff 24 May

DNIPRO, UKRAINE

RADAR MINIMUM ALTITUDES

DNIPRO Radar (APP) 119.4	Apt Elev 482'	Alt Set: hPa Trans level: By ATC Trans alt: 10010' 1. This chart may only be used for cross-checking of altitudes assigned while the aircraft identified. 2. MRVA are safe if the temperature at the surface is -24°C or above. For lower temperatures, corrected minimum levels will be provided by ATC.
---------------------------------------	-------------------------	--



CHANGES: Location name revised.

UKDD/DNK

JEPPESEN

DNIPRO, UKRAINE

DNIPROPETROVS'K INTL

18 MAY 18

10-2

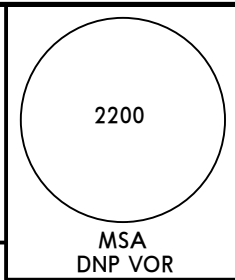
Eff 24 May

RNAV STAR

ATIS
130.9 (Russian 134.9)

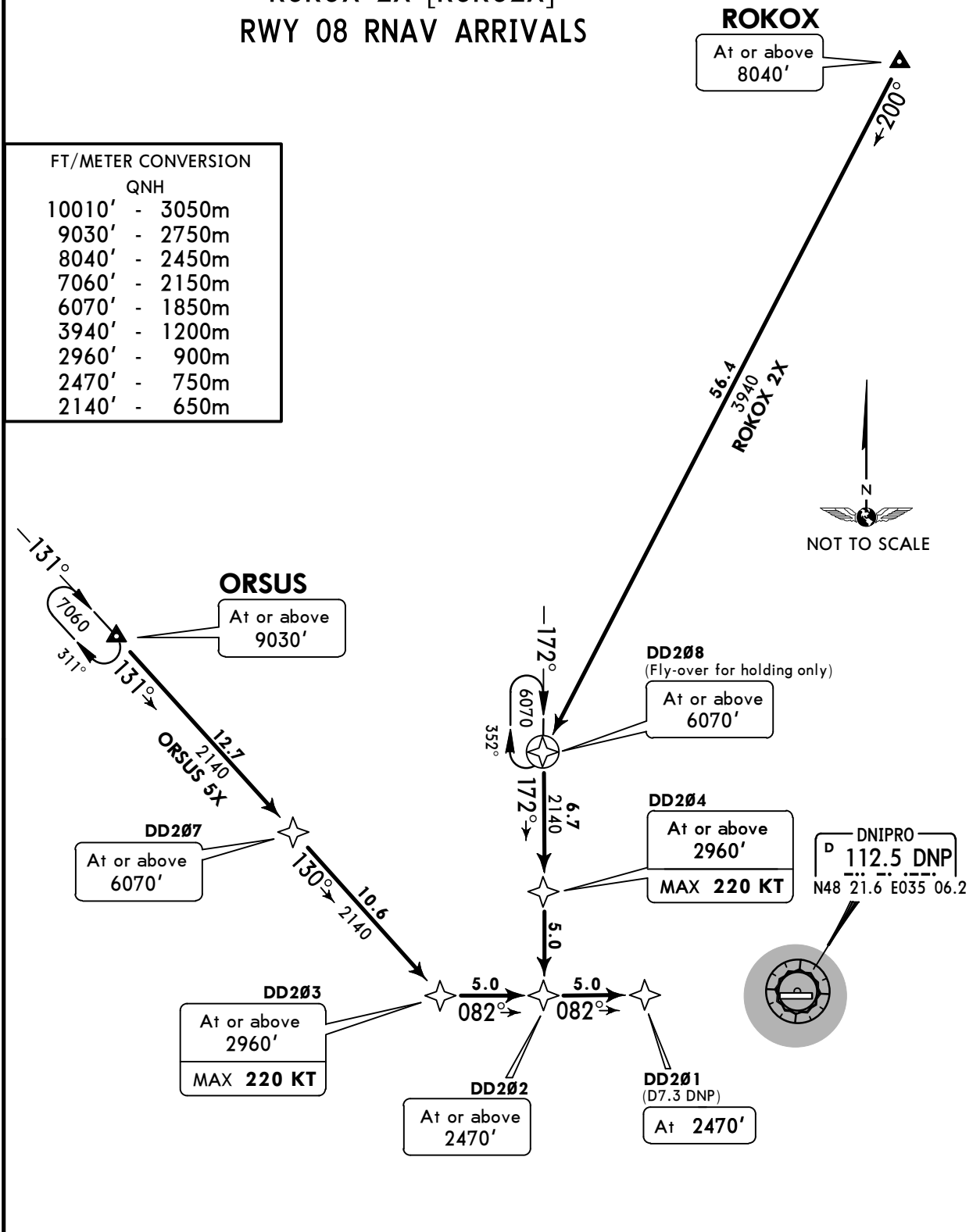
Apt Elev
482'

Alt Set: hPa
Trans level: By ATC Trans alt: 10010'
1. RNAV 1 (GNSS).
2. RNAV-1 (P-RNAV) approval required otherwise advise ATC.
3. EXPECT ILS or NDB approach on DD201.
4. For CDO instructions refer to 10-1P pages.



ORSUS 5X [ORSU5X]
ROKOX 2X [ROK02X]
RWY 08 RNAV ARRIVALS

FT/METER CONVERSION	
QNH	
10010'	- 3050m
9030'	- 2750m
8040'	- 2450m
7060'	- 2150m
6070'	- 1850m
3940'	- 1200m
2960'	- 900m
2470'	- 750m
2140'	- 650m



STAR	ROUTING
ORSUS 5X	ORSUS (9030'+) - DD207 (6070'+) - DD203 (2960'+; K220-) - DD202 (2470'+) - DD201 (2470').
ROKOX 2X	ROKOX (8040'+) - DD208 (6070'+) - DD204 (2960'+; K220-) - DD202 (2470'+) - DD201 (2470').

UKDD/DNK

JEPPESEN

DNIPRO, UKRAINE

DNIPROPETROVS'K INTL

18 MAY 18

10-2A

Eff 24 May

RNAV STAR

2200

MSA
DNP VOR

ATIS
130.9 (Russian 134.9)

Apt Elev
482'

Alt Set: hPa
Trans level: By ATC Trans alt: 10010'

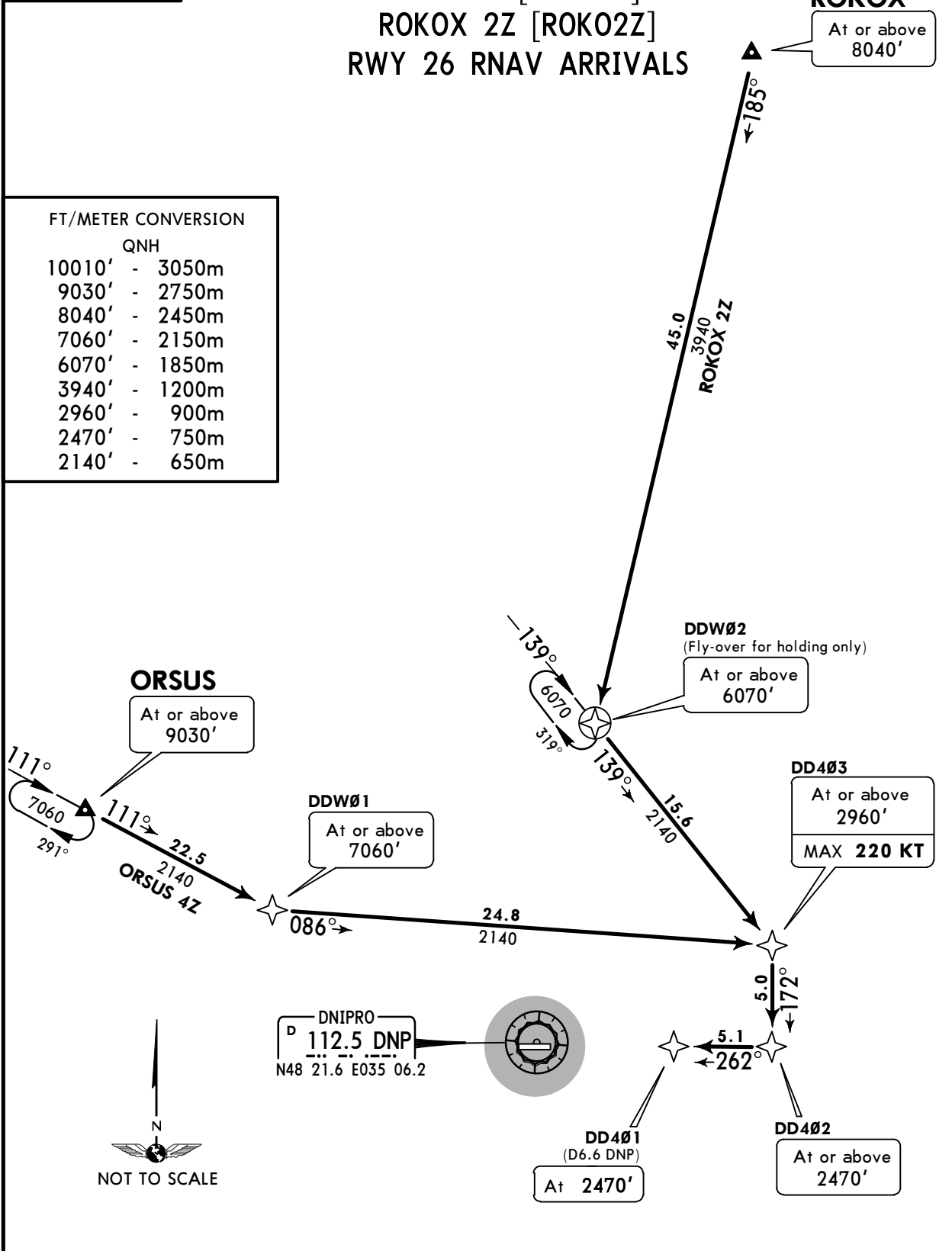
1. RNAV 1 (GNSS)
2. RNAV-1 (P-RNAV) approval required otherwise advise ATC
3. EXPECT ILS or NDB approach on DD401.
4. For CDO instructions refer to 10-1P pages.

ORSUS 4Z [ORSU4Z]
ROKOX 2Z [ROK02Z]
RWY 26 RNAV ARRIVALS

FT/METER CONVERSION

QNH

10010'	-	3050m
9030'	-	2750m
8040'	-	2450m
7060'	-	2150m
6070'	-	1850m
3940'	-	1200m
2960'	-	900m
2470'	-	750m
2140'	-	650m



STAR	ROUTING
ORSUS 4Z	ORSUS (9030'+) - DDW01 (7060'+) - DD403 (2960'+; K220-) - DD402 (2470'+) - DD401 (2470').
ROKOX 2Z	ROKOX (8040'+) - DDW02 (6070'+) - DD403 (2960'+; K220-) - DD402 (2470'+) - DD401 (2470').

UKDD/DNK

JEPPESSEN

DNIPRO, UKRAINE

DNIPROPETROVS'K INTL 18 MAY 18

10-2B

Eff 24 May

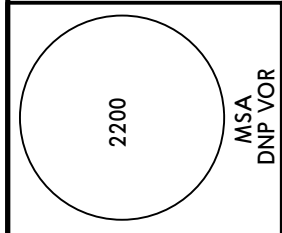
RNAV STAR

ATIS
130.9 (Russian 134.9)

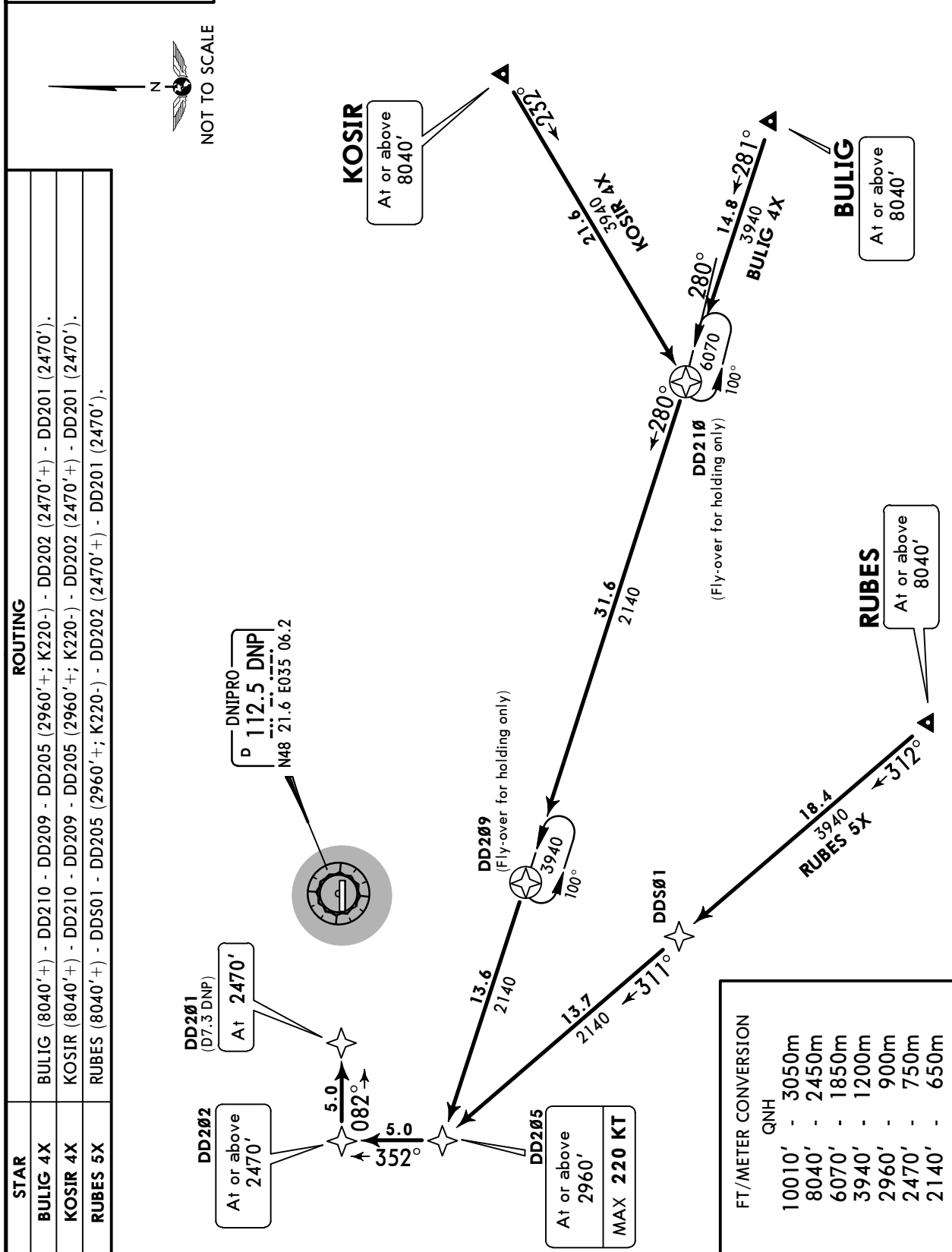
Apt Elev
482'

Alt Set: hPa
Trans level: By ATC Trans alt: 10010'

1. RNAV 1 (GNSS).
2. RNAV-1 (P-RNAV) approval required otherwise advise ATC.
3. EXPECT ILS or NDB approach on DD201.
4. For CDO instructions refer to 10-1P pages.



BULIG 4X [BULI4X]
KOSIR 4X [KOSI4X]
RUBES 5X [RUBE5X]
RWY 08 RNAV ARRIVALS



UKDD/DNK
DNIPROPETROVS'K INTL

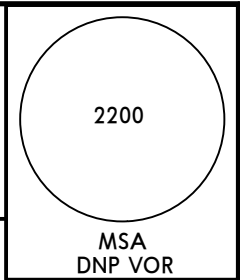
18 MAY 18 **10-2C** **Eff 24 May**

DNIPRO, UKRAINE
RNAV STAR

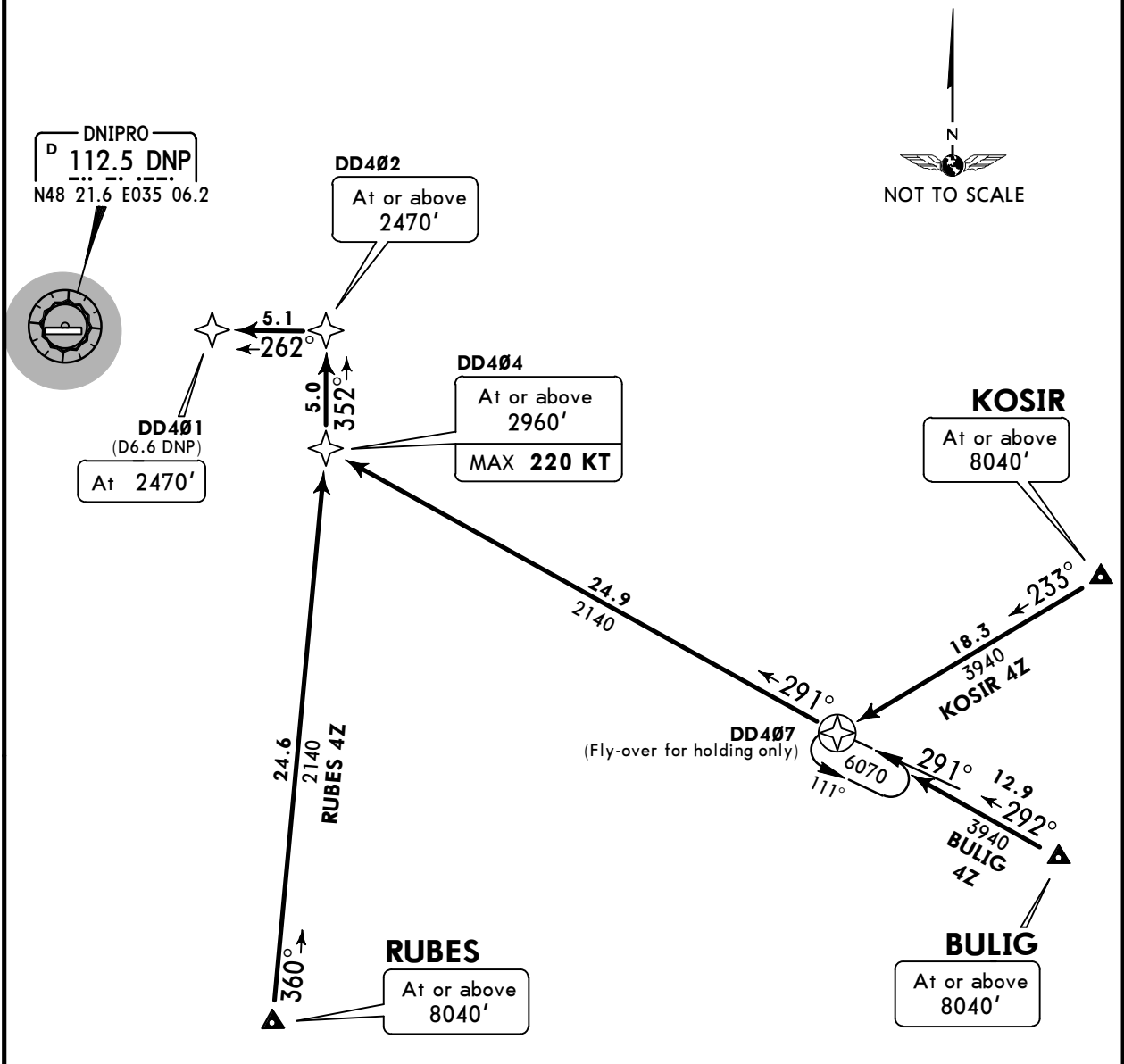
ATIS
130.9 (Russian **134.9**)

Apt Elev
482'

Alt Set: hPa
Trans level: By ATC Trans alt: 10010'
1. RNAV 1 (GNSS).
2. RNAV-1 (P-RNAV) approval required otherwise advise ATC.
3. EXPECT ILS or NDB approach on DD401.
4. For CDO instructions refer to 10-1P pages.



BULIG 4Z [BULI4Z]
KOSIR 4Z [KOSI4Z]
RUBES 4Z [RUBE4Z]
RWY 26 RNAV ARRIVALS



FT/METER CONVERSION
QNH

10010'	-	3050m
8040'	-	2450m
6070'	-	1850m
3940'	-	1200m
2960'	-	900m
2470'	-	750m
2140'	-	650m

STAR	ROUTING
BULIG 4Z	BULIG (8040'+) - DD407 - DD404 (2960'+; K220-) - DD402 (2470'+) - DD401 (2470').
KOSIR 4Z	KOSIR (8040'+) - DD407 - DD404 (2960'+; K220-) - DD402 (2470'+) - DD401 (2470').
RUBES 4Z	RUBES (8040'+) - DD404 (2960'+; K220-) - DD402 (2470'+) - DD401 (2470').

UKDD/DNK
DNIPROPETROVS'K INTL 18 MAY 18

JEPESEN

DNIPRO, UKRAINE

10-2D

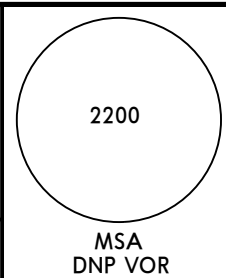
Eff 24 May

RNAV STAR

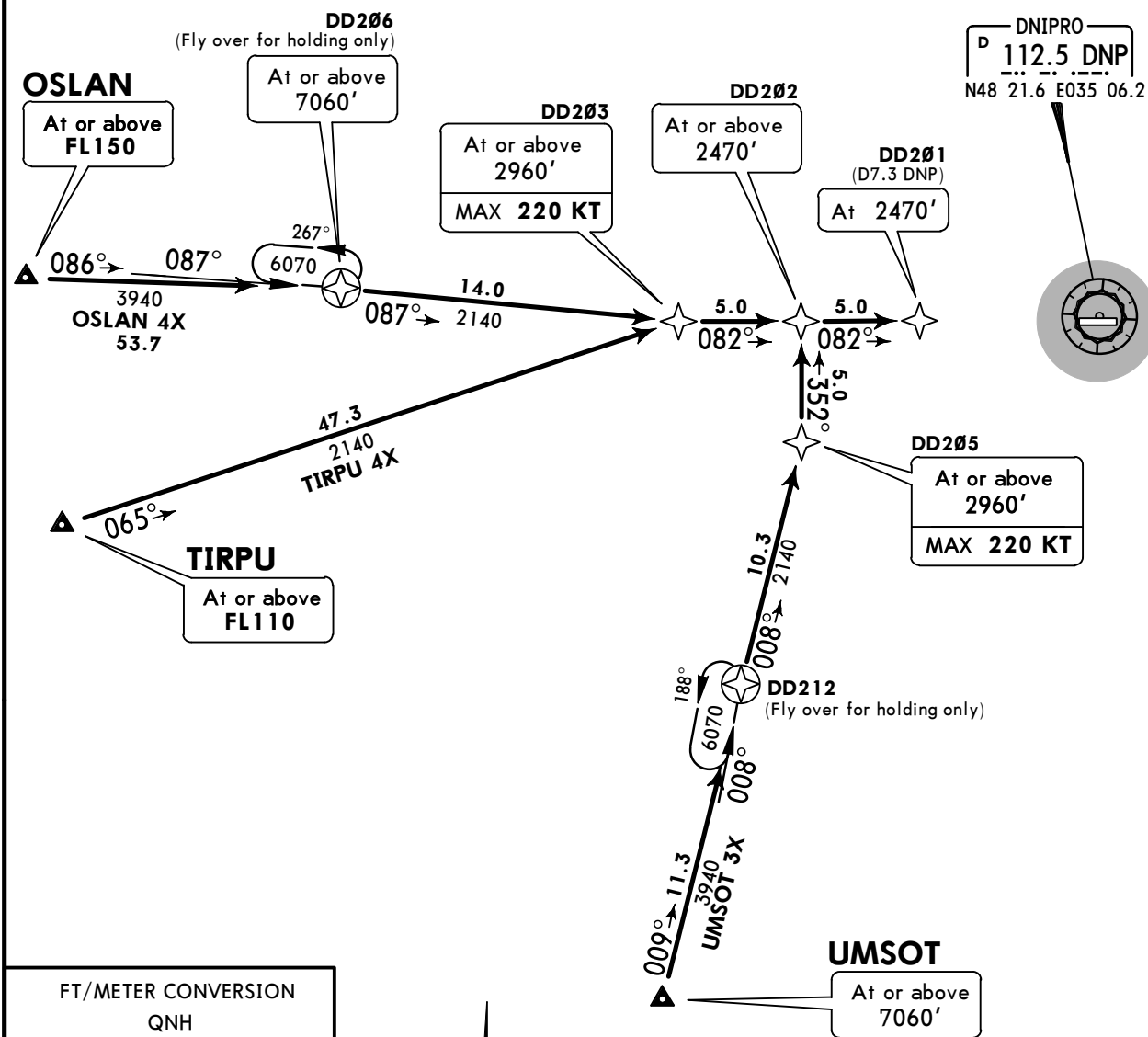
ATIS
130.9 (Russian **134.9**)

Apt Elev
482'

Alt Set: hPa
Trans level: By ATC Trans alt: 10010'
1. RNAV 1 (GNSS).
2. RNAV-1 (P-RNAV) approval required otherwise advise ATC.
3. EXPECT ILS or NDB approach on DD201.
4. For CDO instructions refer to 10-1P pages.



**OSLAN 4X [OSLA4X]
TIRPU 4X [TIRP4X]
UMSOT 3X [UMSO3X]
RWY 08 RNAV ARRIVALS**



FT/METER CONVERSION	
QNH	
10010'	- 3050m
7060'	- 2150m
6070'	- 1850m
3940'	- 1200m
2960'	- 900m
2470'	- 750m
2140'	- 650m

STAR	ROUTING
OSLAN 4X	OSLAN (FL150+) - DD206 (7060'+) - DD203 (2960'+; K220-) - DD202 (2470'+) - DD201 (2470').
TIRPU 4X	TIRPU (FL110+) - DD203 (2960'+; K220-) - DD202 (2470'+) - DD201 (2470').
UMSOT 3X	UMSOT (7060'+) - DD212 - DD205 (2960'+; K220-) - DD202 (2470'+) - DD201 (2470').

UKDD/DNK

JEPPESSEN

DNIPRO, UKRAINE

DNIPROPETROVS'K INTL

18 MAY 18

10-2E

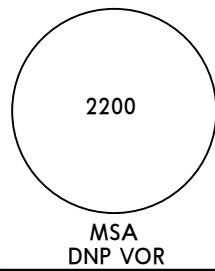
Eff 24 May

RNAV STAR

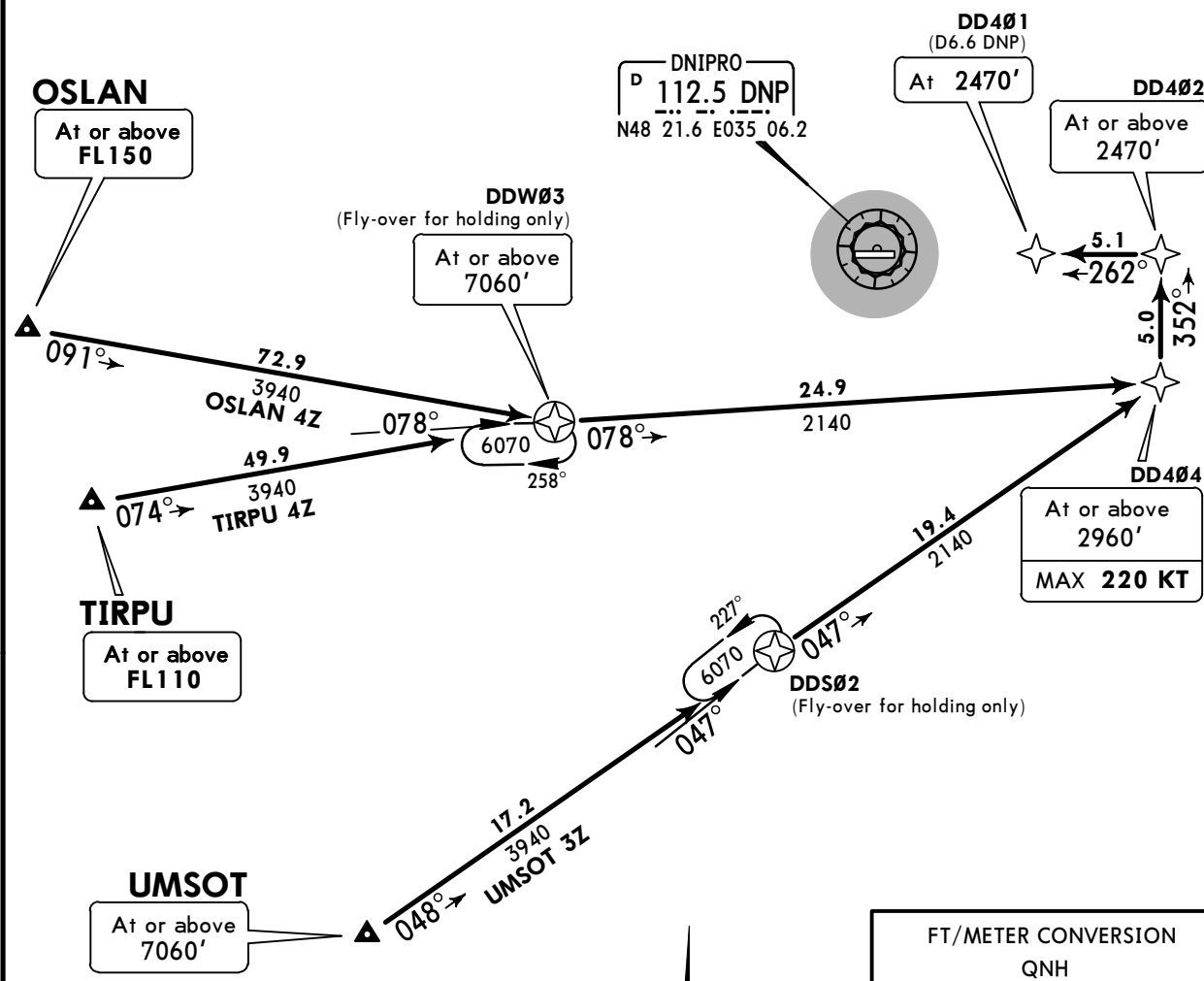
ATIS
130.9 (Russian 134.9)

Apt Elev
482'

Alt Set: hPa
Trans level: By ATC Trans alt: 10010'
1. RNAV 1 (GNSS).
2. RNAV-1 (P-RNAV) approval required otherwise advise ATC.
3. EXPECT ILS or NDB approach on DD401.
4. For CDO instructions refer to 10-1P pages.



**OSLAN 4Z [OSLA4Z]
TIRPU 4Z [TIRP4Z]
UMSOT 3Z [UMSO3Z]
RWY 26 RNAV ARRIVALS**



STAR	ROUTING
OSLAN 4Z	OSLAN (FL150+) - DDW03 (7060'+) - DD404 (2960'+; K220-) - DD402 (2470'+) - DD401 (2470').
TIRPU 4Z	TIRPU (FL110+) - DDW03 (7060'+) - DD404 (2960'+; K220-) - DD402 (2470'+) - DD401 (2470').
UMSOT 3Z	UMSOT (7060'+) - DDS02 - DD404 (2960'+; K220-) - DD402 (2470'+) - DD401 (2470').

UKDD/DNK

JEPPESEN

DNIPRO, UKRAINE

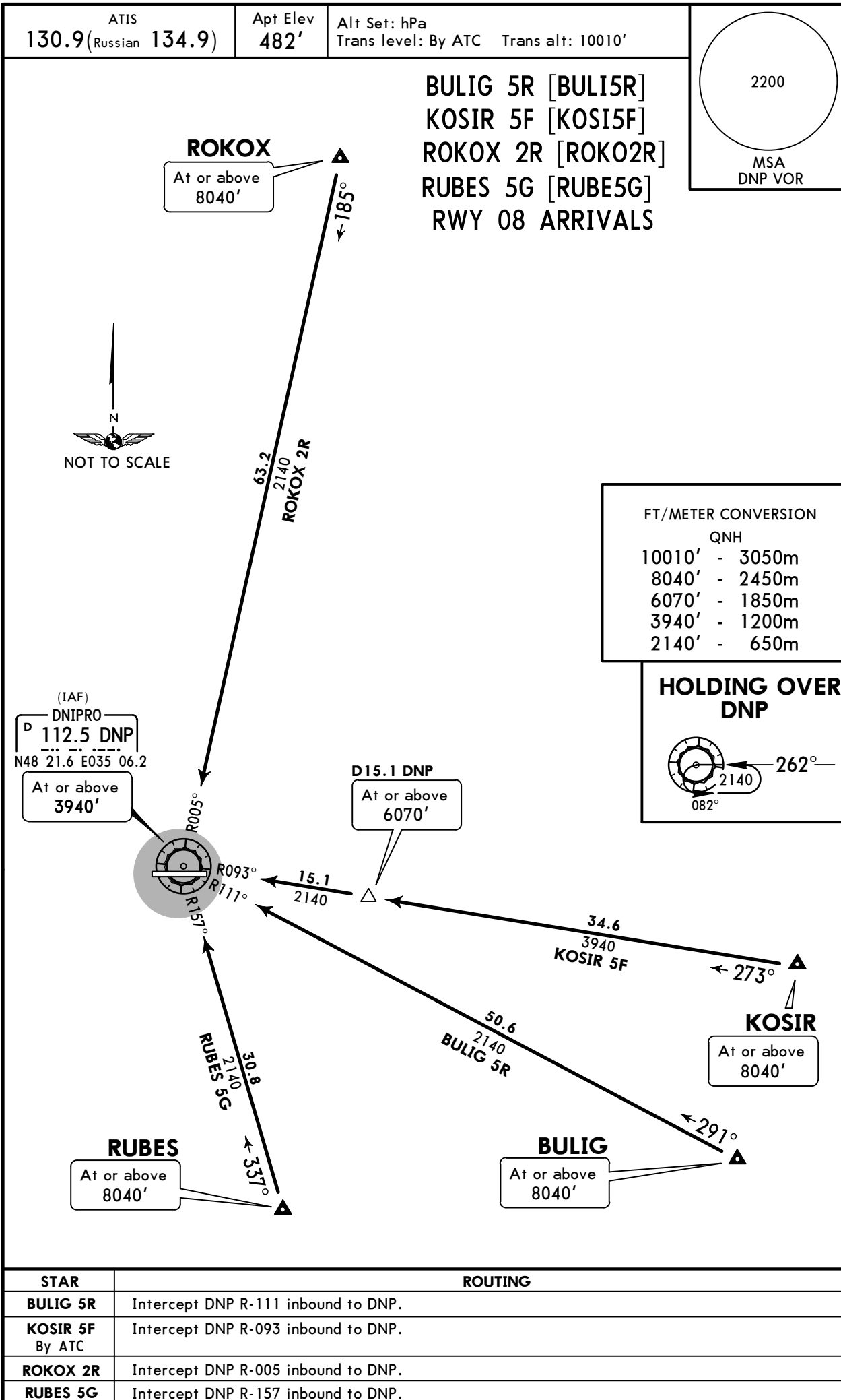
DNIPROPETROVS'K INTL

18 MAY 18

10-2F

Eff 24 May

STAR



CHANGES: Location name & airport name revised; STARs completely revised.

UKDD/DNK

JEPPESEN

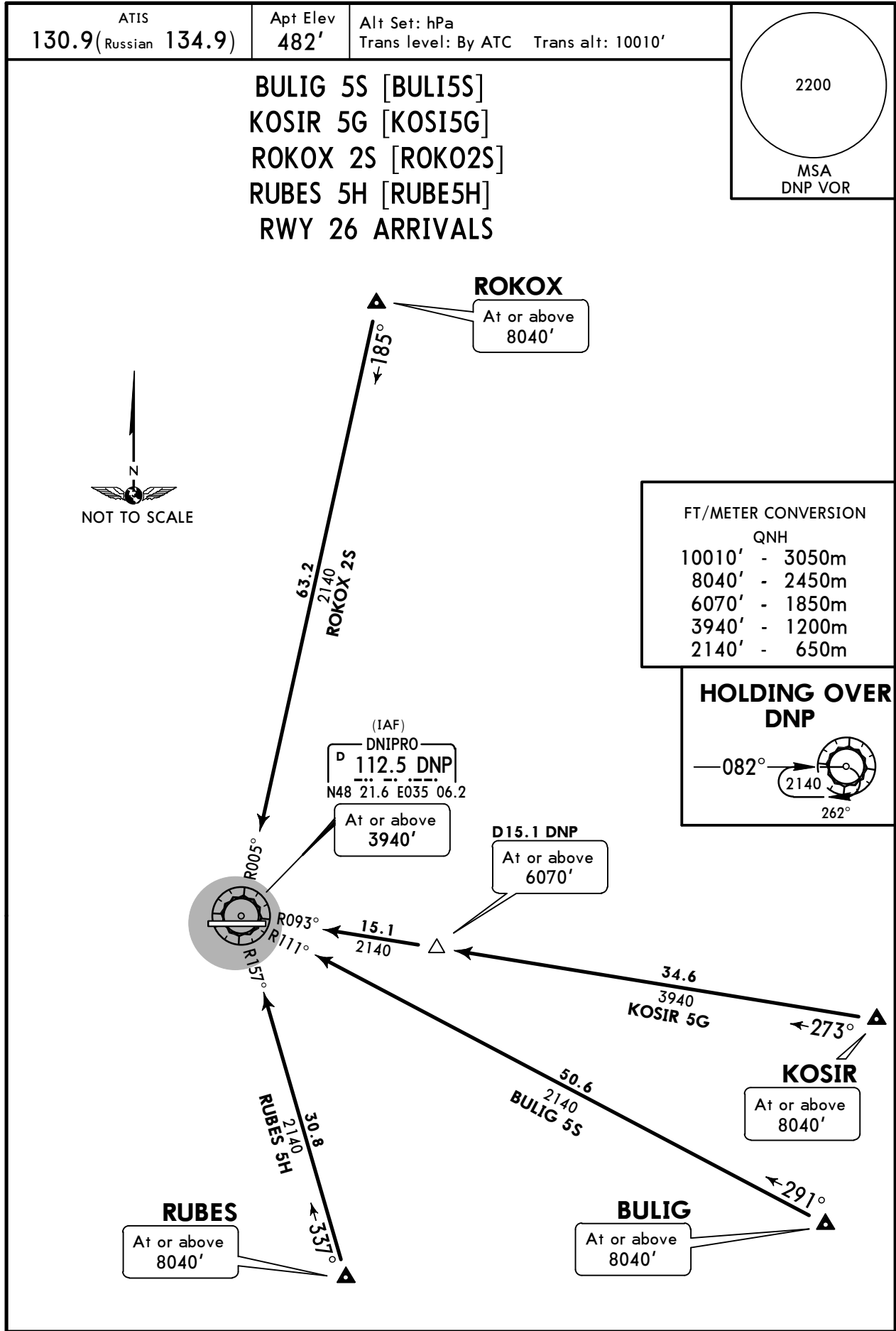
DNIPRO, UKRAINE

DNIPROPETROVS'K INTL 18 MAY 18

10-2G

Eff 24 May

STAR



STAR	ROUTING
BULIG 5S	Intercept DNP R-111 inbound to DNP.
KOSIR 5G By ATC	Intercept DNP R-093 inbound to DNP.
ROKOX 2S	Intercept DNP R-005 inbound to DNP.
RUBES 5H	Intercept DNP R-157 inbound to DNP.

UKDD/DNK

JEPPESEN

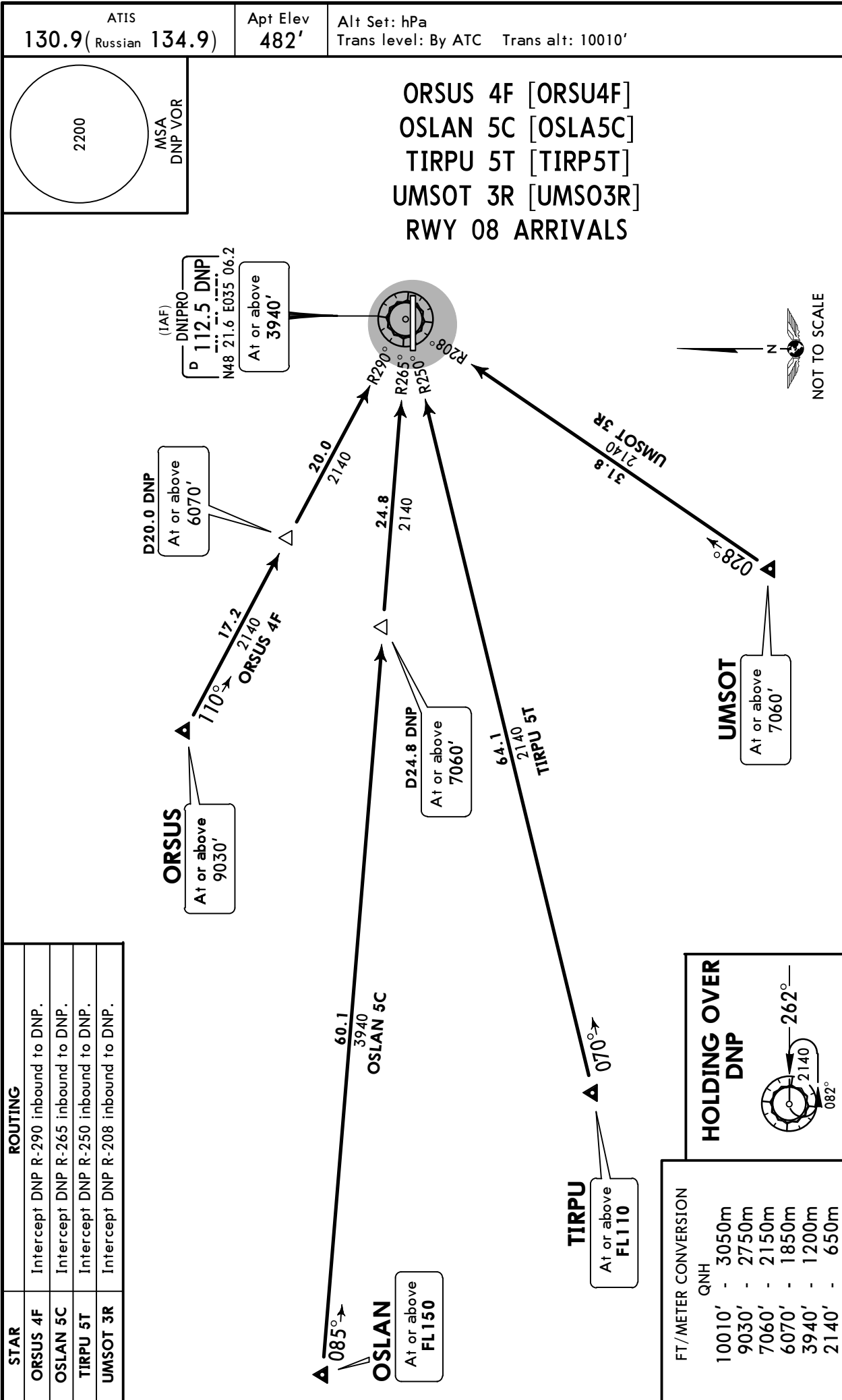
DNIPRO, UKRAINE

DNIPROPETROVS'K INTL 18 MAY 18

10-2H

Eff 24 May

STAR



UKDD/DNK

JEPPESSEN

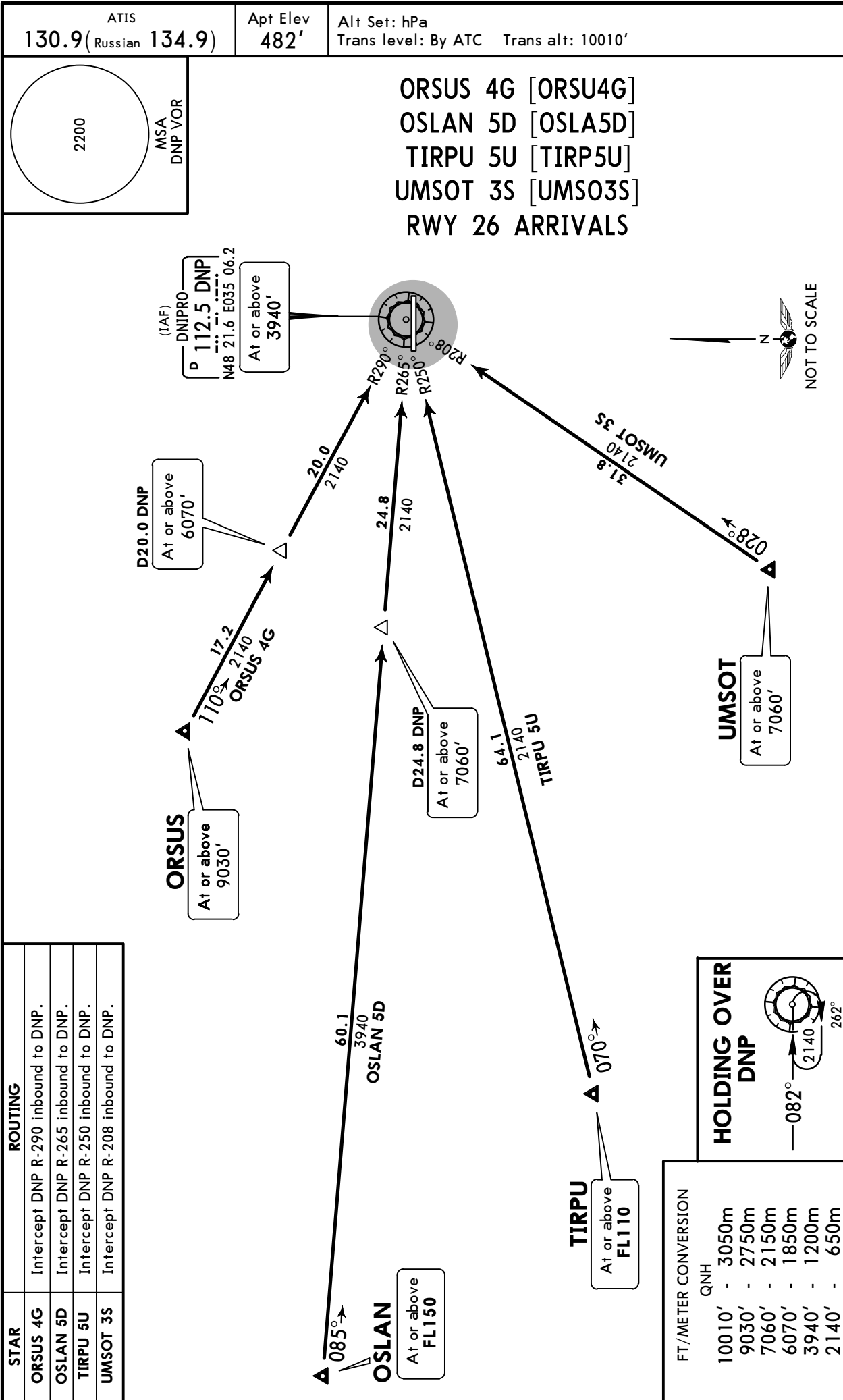
DNIPRO, UKRAINE

DNIPROPETROVS'K INTL 18 MAY 18

10-2J

Eff 24 May

STAR



STAR	ROUTING
ORSUS 4G	Intercept DNP R-290 inbound to DNP.
OSLAN 5D	Intercept DNP R-265 inbound to DNP.
TIRPU 5U	Intercept DNP R-250 inbound to DNP.
UMSOT 3S	Intercept DNP R-208 inbound to DNP.

FT/METER CONVERSION	
QNH	
10010'	- 3050m
9030'	- 2750m
7060'	- 2150m
6070'	- 1850m
3940'	- 1200m
2140'	- 650m

UKDD/DNK

JEPPESEN

DNIPRO, UKRAINE

DNIPROPETROVS'K INTL

18 MAY 18

10-3

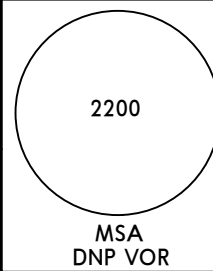
Eff 24 May

RNAV SID

Apt Elev
482'

Trans level: By ATC Trans alt: 10010'

1. RNAV 1 (GNSS).
2. RNAV 1 (P-RNAV) approval required otherwise advise ATC.
3. If unable to comply SID procedures advise ATC.

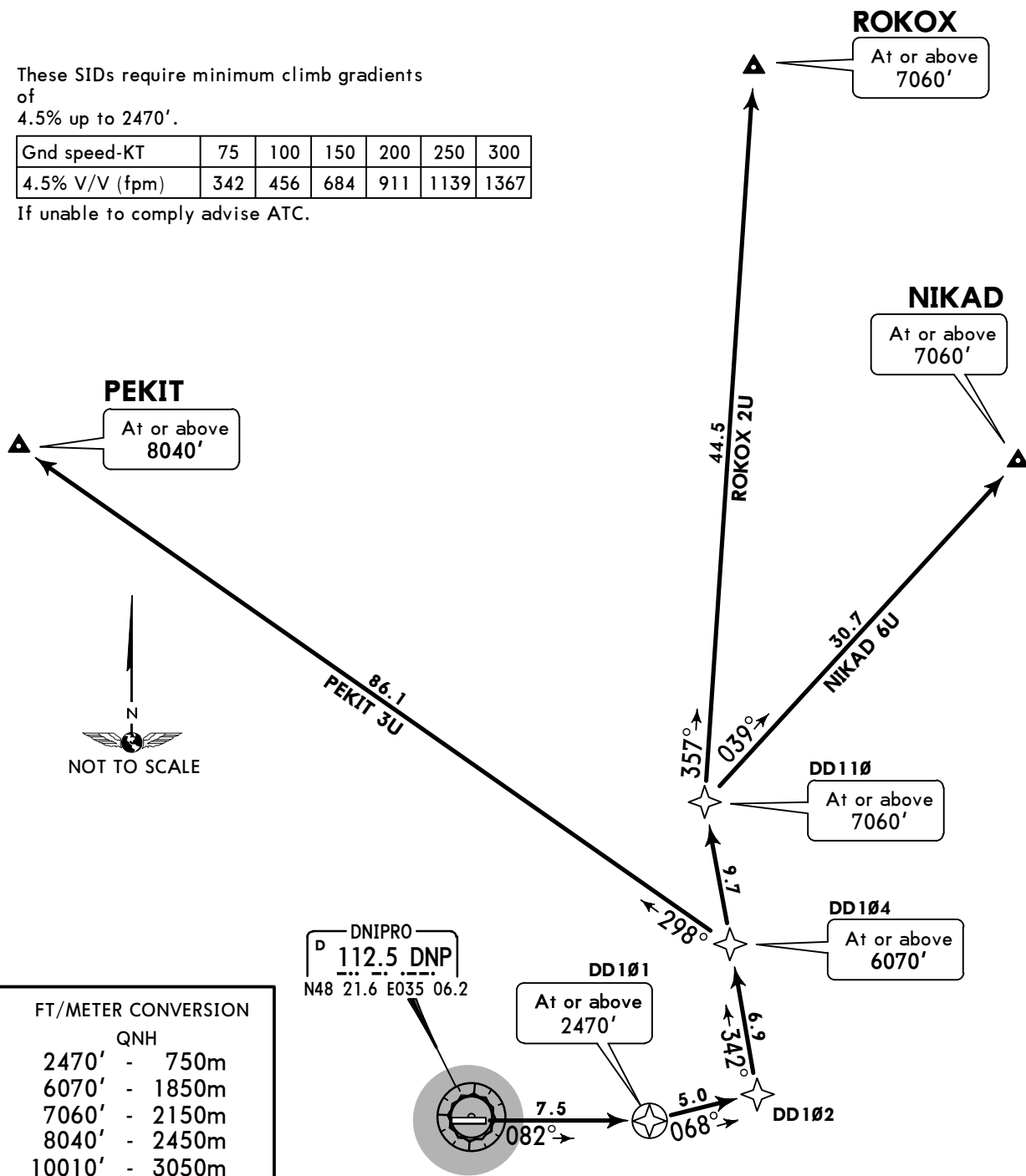


**NIKAD 6U [NIKA6U]
PEKIT 3U [PEKI3U]
ROKOX 2U [ROK02U]
RWY 08 RNAV DEPARTURES**

These SIDs require minimum climb gradients of 4.5% up to 2470'.

Gnd speed-KT	75	100	150	200	250	300
4.5% V/V (fpm)	342	456	684	911	1139	1367

If unable to comply advise ATC.



UKDD/DNK

JEPPESEN

DNIPRO, UKRAINE

DNIPROPETROVS'K INTL

18 MAY 18

10-3A

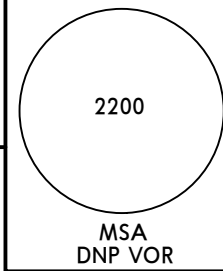
Eff 24 May

RNAV SID

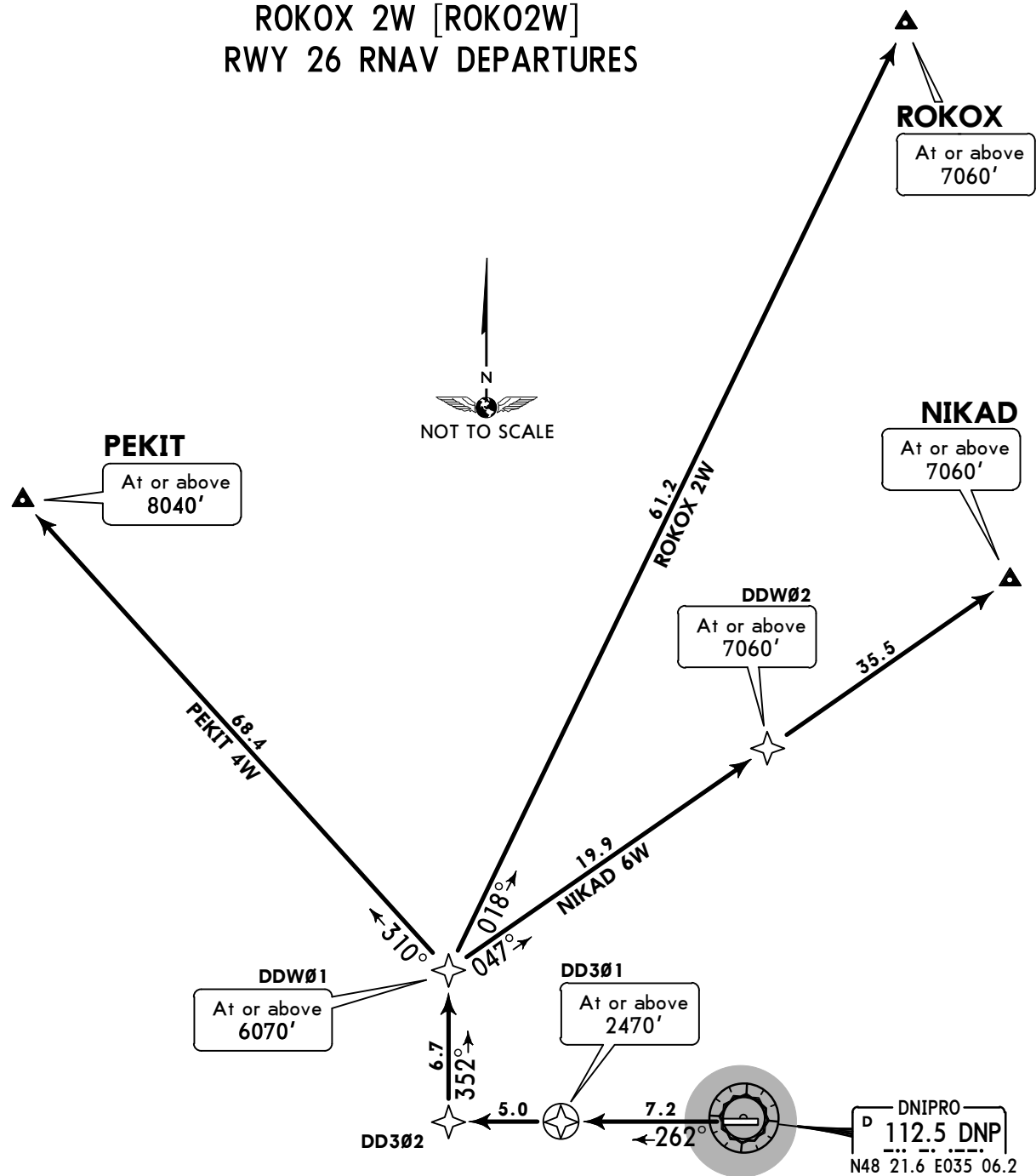
Apt Elev
482'

Trans level: By ATC Trans alt: 10010'

1. RNAV 1 (GNSS).
2. RNAV 1 (P-RNAV) approval required otherwise advise ATC.
3. If unable to comply SID procedures advise ATC.



**NIKAD 6W [NIKA6W]
PEKIT 4W [PEKI4W]
ROKOX 2W [ROK02W]
RWY 26 RNAV DEPARTURES**



These SIDs require a minimum climb gradient of 5.0% up to 2470'.

Gnd speed-KT	75	100	150	200	250	300
5.0% V/V (fpm)	380	506	760	1013	1266	1519

If unable to comply advise ATC.

FT/METER CONVERSION

QNH	
2470'	- 750m
6070'	- 1850m
7060'	- 2150m
8040'	- 2450m
10010'	- 3050m

SID	ROUTING
NIKAD 6W	DD301 (2470'+) - DD302 - DDW01 (6070'+) - DDW02 (7060'+) - NIKAD (7060'+).
PEKIT 4W	DD301 (2470'+) - DD302 - DDW01 (6070'+) - PEKIT (8040'+).
ROKOX 2W	DD301 (2470'+) - DD302 - DDW01 (6070'+) - ROKOX (7060'+).

UKDD/DNK

JEPPESEN

DNIPRO, UKRAINE

DNIPROPETROVS'K INTL

18 MAY 18

(10-3B)

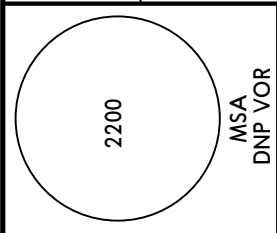
Eff 24 May

RNAV SID

Apt Elev 482'

Trans level: By ATC Trans alt: 10010'

1. RNAV 1 (GNSS).
2. RNAV 1 (P-RNAV) approval required otherwise advise ATC.
3. If unable to comply SID procedures advise ATC.



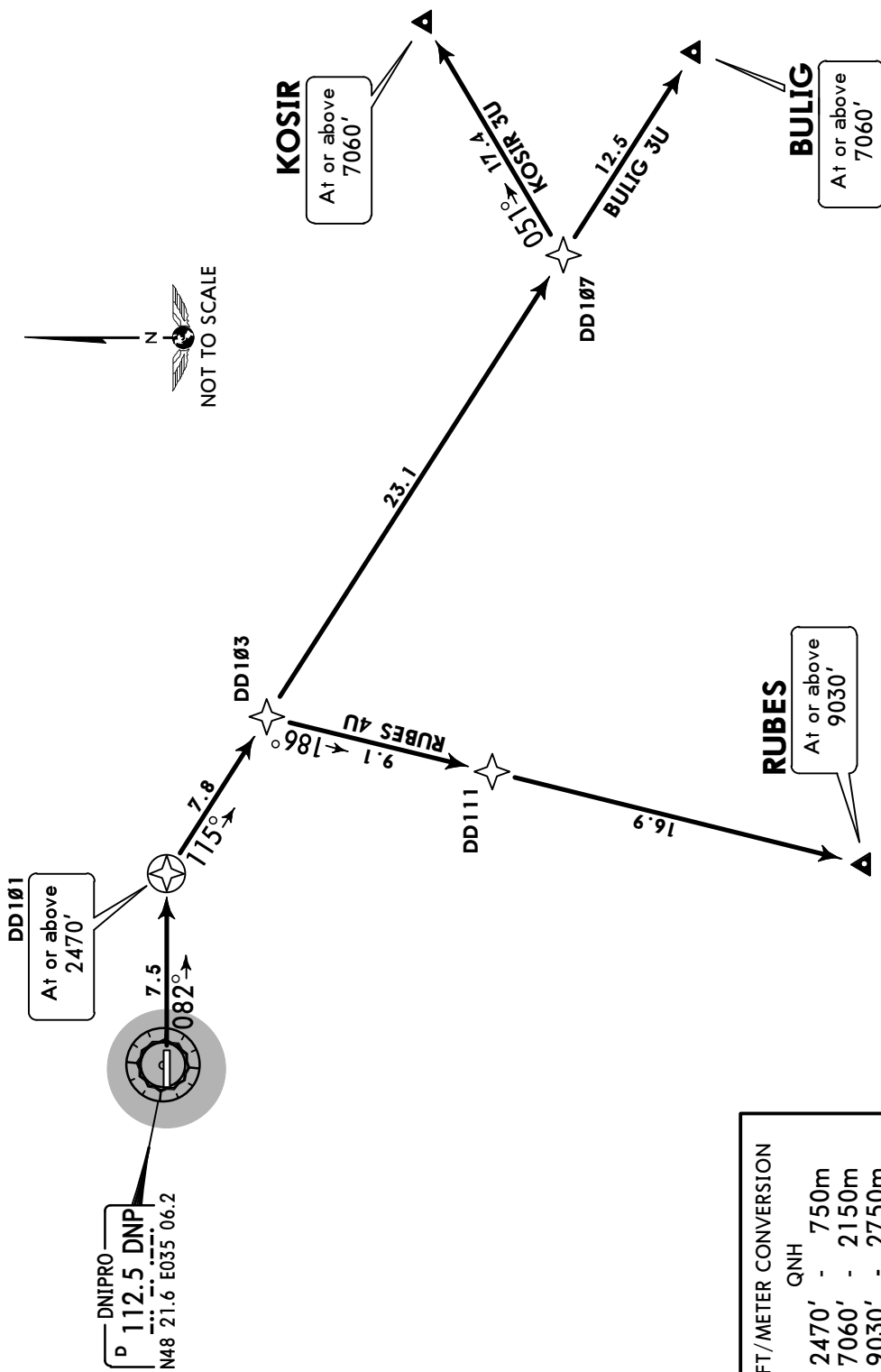
BULIG 3U [BULI3U]
KOSIR 3U [KOSI3U]
RUBES 4U [RUBE4U]
RWY 08 RNAV DEPARTURES

These SIDs require a minimum climb gradient of 4.5% up to 2470'.

Gnd speed-KT	75	100	150	200	250	300
4.5% V/V (fpm)	342	456	684	911	1139	1367

If unable to comply advise ATC.

SID	ROUTING
BULIG 3U	DD101 (2470'+) - DD103 - DD107 - BULIG (7060'+).
KOSIR 3U	DD101 (2470'+) - DD103 - DD107 - KOSIR (7060'+).
RUBES 4U	DD101 (2470'+) - DD111 - RUBES (9030'+).



FT/METER CONVERSION

QNH	FT	METER
2470'	-	750m
7060'	-	2150m
9030'	-	2750m
10010'	-	3050m

UKDD/DNK

JEPPESSEN

DNIPRO, UKRAINE

DNIPROPETROVS'K INTL 18 MAY 18

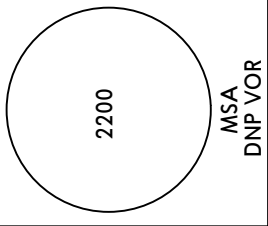
10-3C

Eff 24 May

RNAV SID

Apt Elev
482'

- Trans level: By ATC Trans alt: 10010'
1. RNAV 1 (GNSS).
 2. RNAV 1 (P-RNAV) approval required otherwise advise ATC.
 3. If unable to comply SID procedures advise ATC.



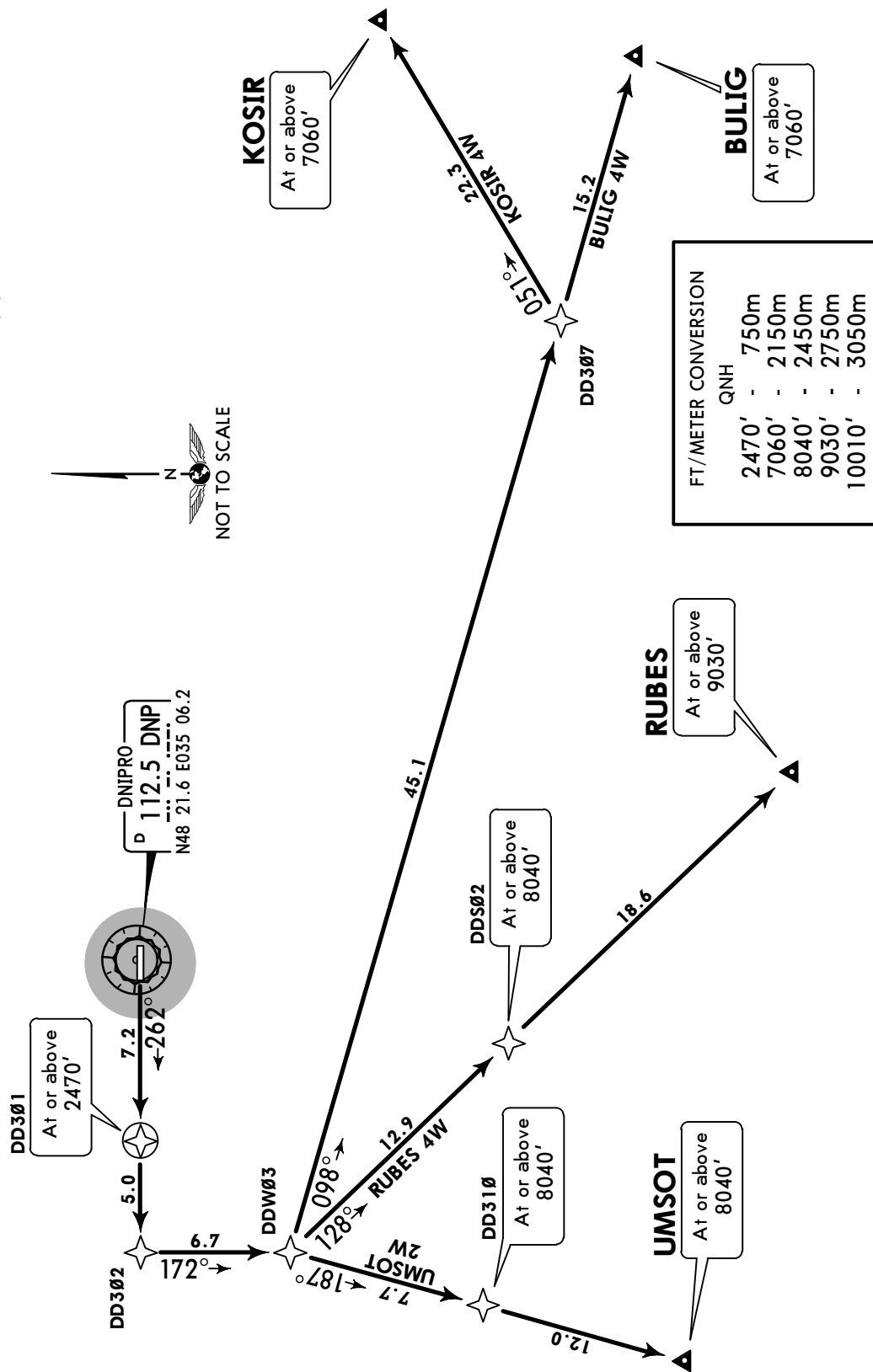
BULIG 4W [BULI4W]
KOSIR 4W [KOSI4W]
RUBES 4W [RUBE4W]
UMSOT 2W [UMSO2W]
RWY 26 RNAV DEPARTURES

These SIDs require a minimum climb gradient of 5% up to 2470'.

Gnd speed-KT	75	100	150	200	250	300
5% V/V (fpm)	380	506	760	1013	1266	1519

If unable to comply advise ATC.

SID	ROUTING
BULIG 4W	DD301 (2470'+) - DD302 - DDW03 - DD307 - BULIG (7060'+).
KOSIR 4W	DD301 (2470'+) - DD302 - DDW03 - DD307 - KOSIR (7060'+).
RUBES 4W	DD301 (2470'+) - DD302 - DDW03 - DDS02 (8040'+) - RUBES (9030'+).
UMSOT 2W	DD301 (2470'+) - DD302 - DDW03 - DD310 (8040'+) - UMSOT (8040'+).



UKDD/DNK
DNIPROPETROVS'K INTL 18 MAY 18

JEPPESEN

DNIPRO, UKRAINE

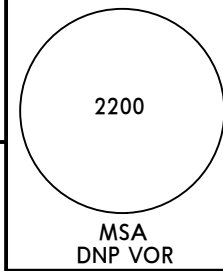
10-3D

Eff 24 May

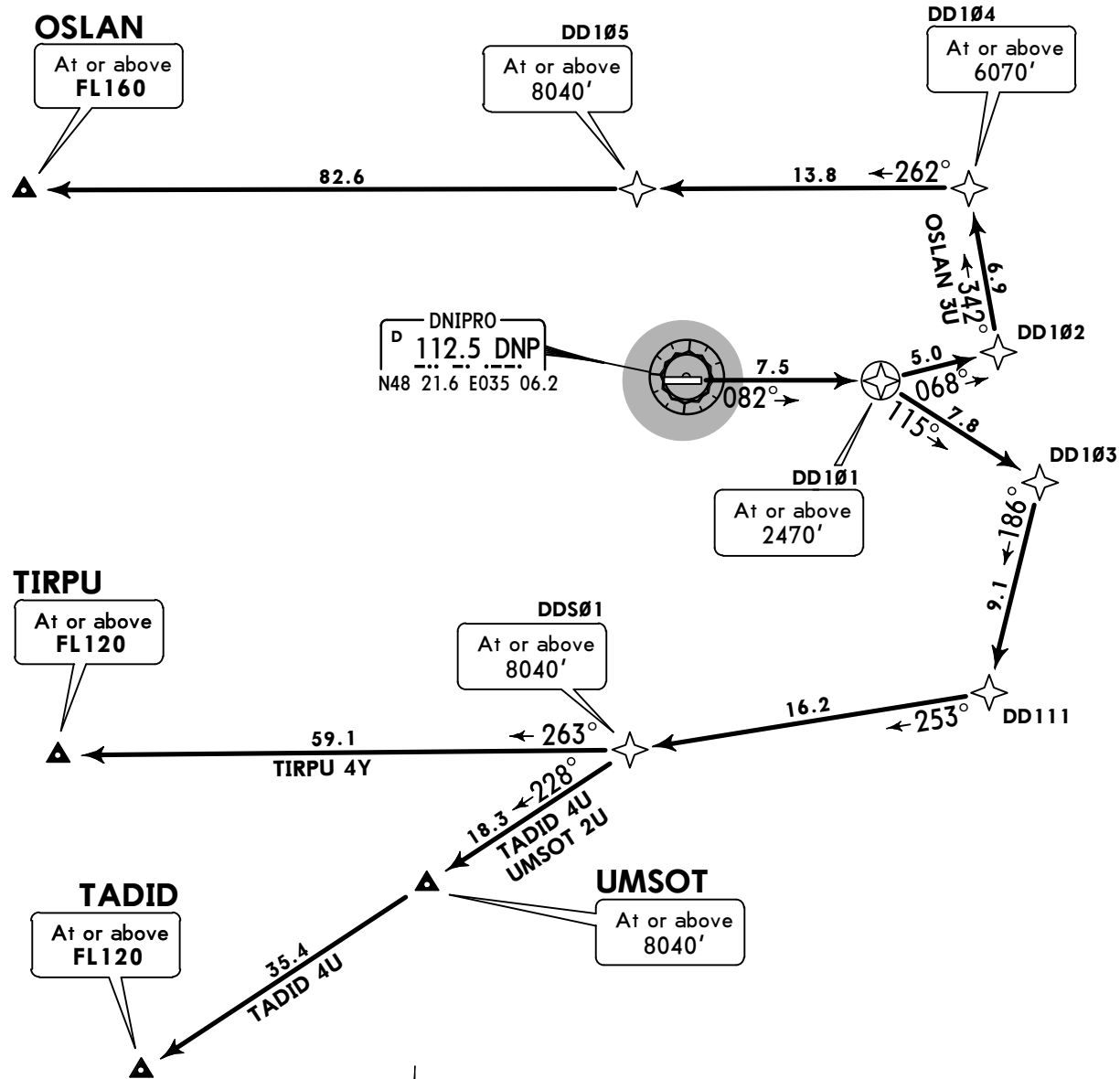
RNAV SID

Apt Elev
482'

Trans level: By ATC Trans alt: 10010'
1. RNAV 1 (GNSS).
2. RNAV 1 (P-RNAV) approval required otherwise advise ATC.
3. If unable to comply SID procedures advise ATC.



OSLAN 3U [OSLA3U]
TADID 4U [TADI4U]
TIRPU 4Y [TIRP4Y]
UMSOT 2U [UMSO2U]
RWY 08 RNAV DEPARTURES



FT/METER CONVERSION

FT	METER
2470'	750m
6070'	1850m
8040'	2450m
10010'	3050m

QNH



These SIDs require a minimum climb gradient of 4.5% up to 2470'.

Gnd speed-KT	75	100	150	200	250	300
4.5% V/V (fpm)	342	456	684	911	1139	1367

If unable to comply advise ATC.

SID	ROUTING
OSLAN 3U	DD101 (2470'+) - DD102 - DD104 (6070'+) - DD105 (8040'+) - OSLAN (FL160+).
TADID 4U	DD101 (2470'+) - DD103 - DD111 - DDS01 (8040'+) - UMSOT (8040'+) - TADID (FL120+).
TIRPU 4Y	DD101 (2470'+) - DD103 - DD111 - DDS01 (8040'+) - TIRPU (FL120+).
UMSOT 2U	DD101 (2470'+) - DD103 - DD111 - DDS01 (8040'+) - UMSOT (8040'+).

UKDD/DNK

JEPPESEN

DNIPRO, UKRAINE

DNIPROPETROVS'K INTL

18 MAY 18

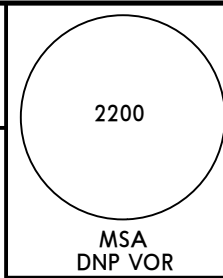
10-3E

Eff 24 May

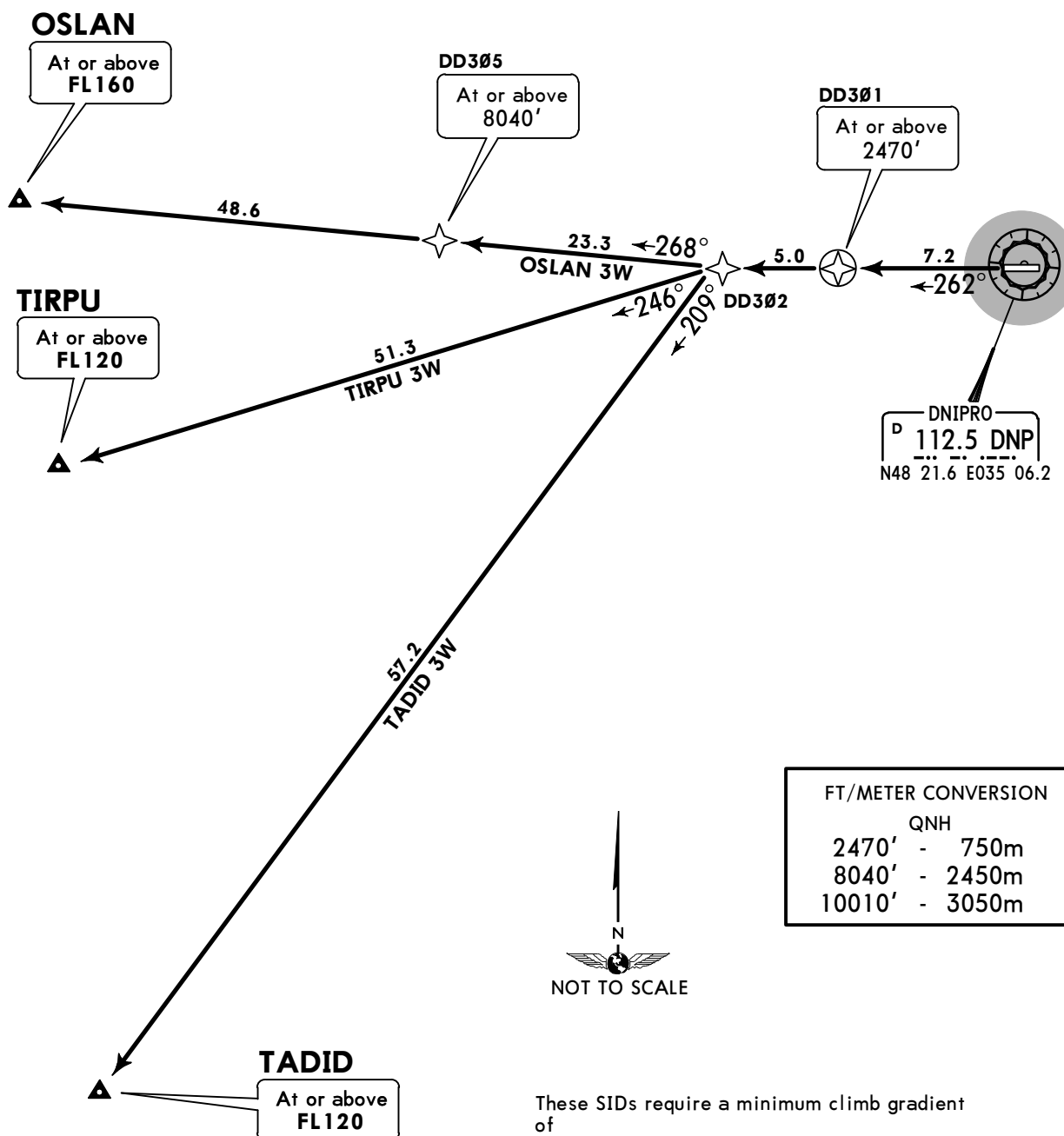
RNAV SID

Apt Elev
482'

Trans level: By ATC Trans alt: 10010'
1. RNAV 1 (GNSS).
2. RNAV 1 (P-RNAV) approval required otherwise advise ATC.
3. If unable to comply SID procedures advise ATC.



OSLAN 3W [OSLA3W]
TADID 3W [TADI3W]
TIRPU 3W [TIRP3W]
RWY 26 RNAV DEPARTURES



SID	ROUTING
OSLAN 3W	DD301 (2470'+) - DD302 - DD305 (8040'+) - OSLAN (FL160+).
TADID 3W	DD301 (2470'+) - DD302 - TADID (FL120+).
TIRPU 3W	DD301 (2470'+) - DD302 - TIRPU (FL120+).

UKDD/DNK

JEPPESSEN

DNIPRO, UKRAINE

DNIPROPETROVS'K INTL

18 MAY 18

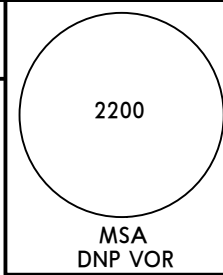
10-3F

Eff 24 May

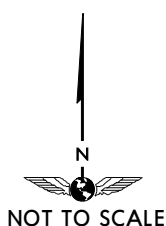
SID

Apt Elev
482'

Trans level: By ATC Trans alt: 10010'
If unable to comply SID procedures advise ATC.

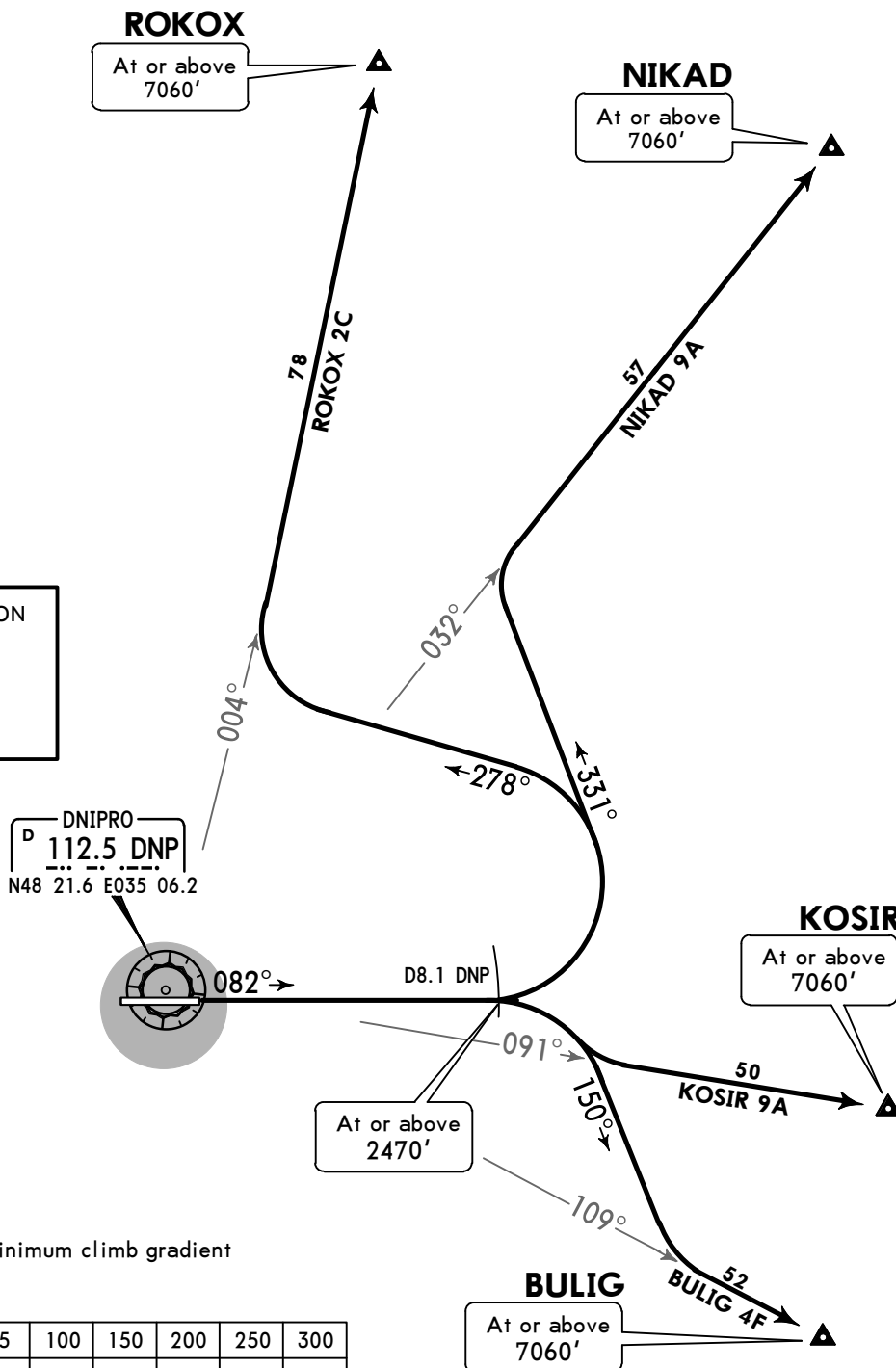


**BULIG 4F [BULI4F], KOSIR 9A [KOSI9A]
NIKAD 9A [NIKA9A], ROKOX 2C [ROK02C]
RWY 08 DEPARTURES**



FT/METER CONVERSION

	QNH
2470'	750m
7060'	2150m
10010'	3050m



These SIDs require a minimum climb gradient of 4.5% up to 2470'.

Gnd speed-KT	75	100	150	200	250	300
4.5% V/V (fpm)	342	456	684	911	1139	1367

If unable to comply advise ATC.

SID	ROUTING
BULIG 4F	On 082° track to D8.1 DNP, turn RIGHT, 150° track, turn LEFT, intercept DNP R-109 to BULIG.
KOSIR 9A BY ATC	On 082° track to D8.1 DNP, turn RIGHT, intercept DNP R-091 to KOSIR.
NIKAD 9A	On 082° track to D8.1 DNP, turn LEFT, 331° track, turn RIGHT, intercept DNP R-032 to NIKAD.
ROKOX 2C	On 082° track to D8.1 DNP, turn LEFT, 278° track, turn RIGHT, intercept DNP R-004 to ROKOX.

UKDD/DNK

JEPPESEN

DNIPRO, UKRAINE

DNIPROPETROVS'K INTL

18 MAY 18

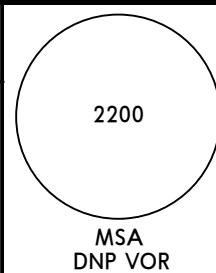
(10-3G)

Eff 24 May

SID

Apt Elev
482'

Trans level: By ATC Trans alt: 10010'
If unable to comply SID procedures advise ATC.

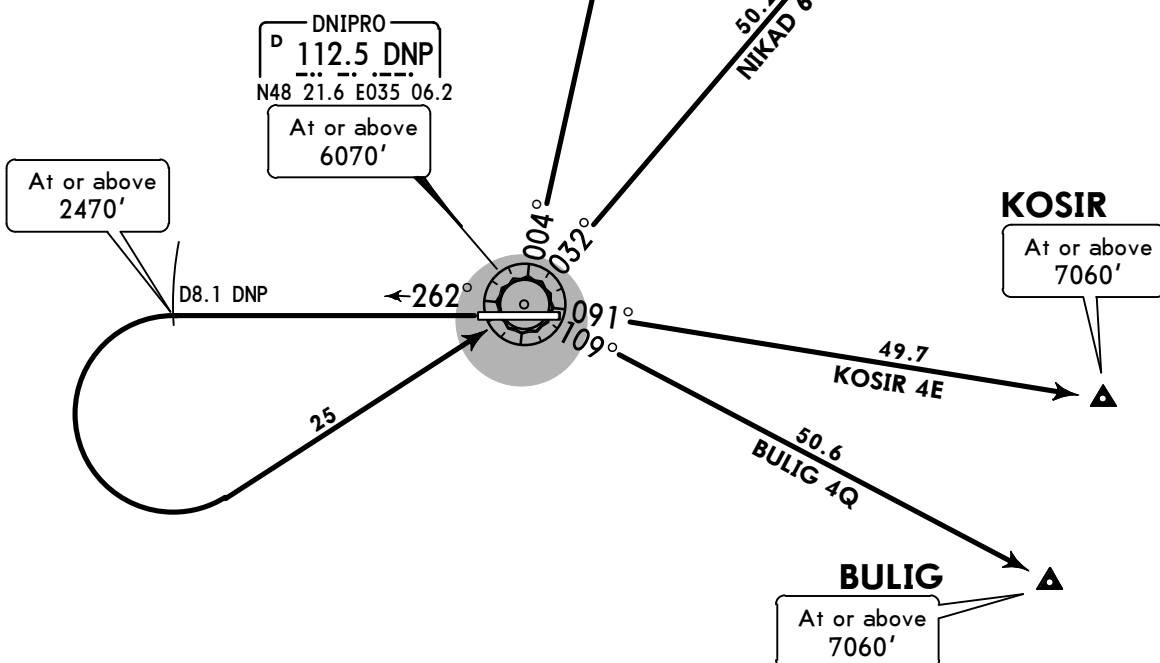


BULIG 4Q [BULI4Q]
KOSIR 4E [KOSI4E]
NIKAD 6C [NIKA6C]
ROKOX 2Q [ROK02Q]
RWY 26 DEPARTURES



FT/METER CONVERSION

QNH	
2470'	- 750m
6070'	- 1850m
7060'	- 2150m
10010'	- 3050m



These SIDs require a minimum climb gradient of 5.0% up to 2470'.

Gnd speed-KT	75	100	150	200	250	300
5.0% V/V (fpm)	380	506	760	1013	1266	1519

If unable to comply advise ATC.

SID	ROUTING
BULIG 4Q	On 262° track to D8.1 DNP, turn LEFT to DNP VOR, turn RIGHT, DNP R-109 to BULIG.
KOSIR 4E BY ATC	On 262° track to D8.1 DNP, turn LEFT to DNP VOR, turn RIGHT, DNP R-091 to KOSIR.
NIKAD 6C	On 262° track to D8.1 DNP, turn LEFT to DNP VOR, turn LEFT, DNP R-032 to NIKAD.
ROKOX 2Q	On 262° track to D8.1 DNP, turn LEFT to DNP VOR, turn LEFT, DNP R-004 to ROKOX.

UKDD/DNK

JEPPESEN

DNIPRO, UKRAINE

DNIPROPETROVS'K INTL

18 MAY 18

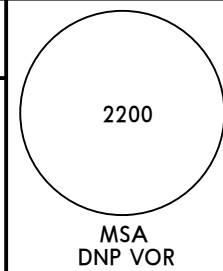
(10-3H)

Eff 24 May

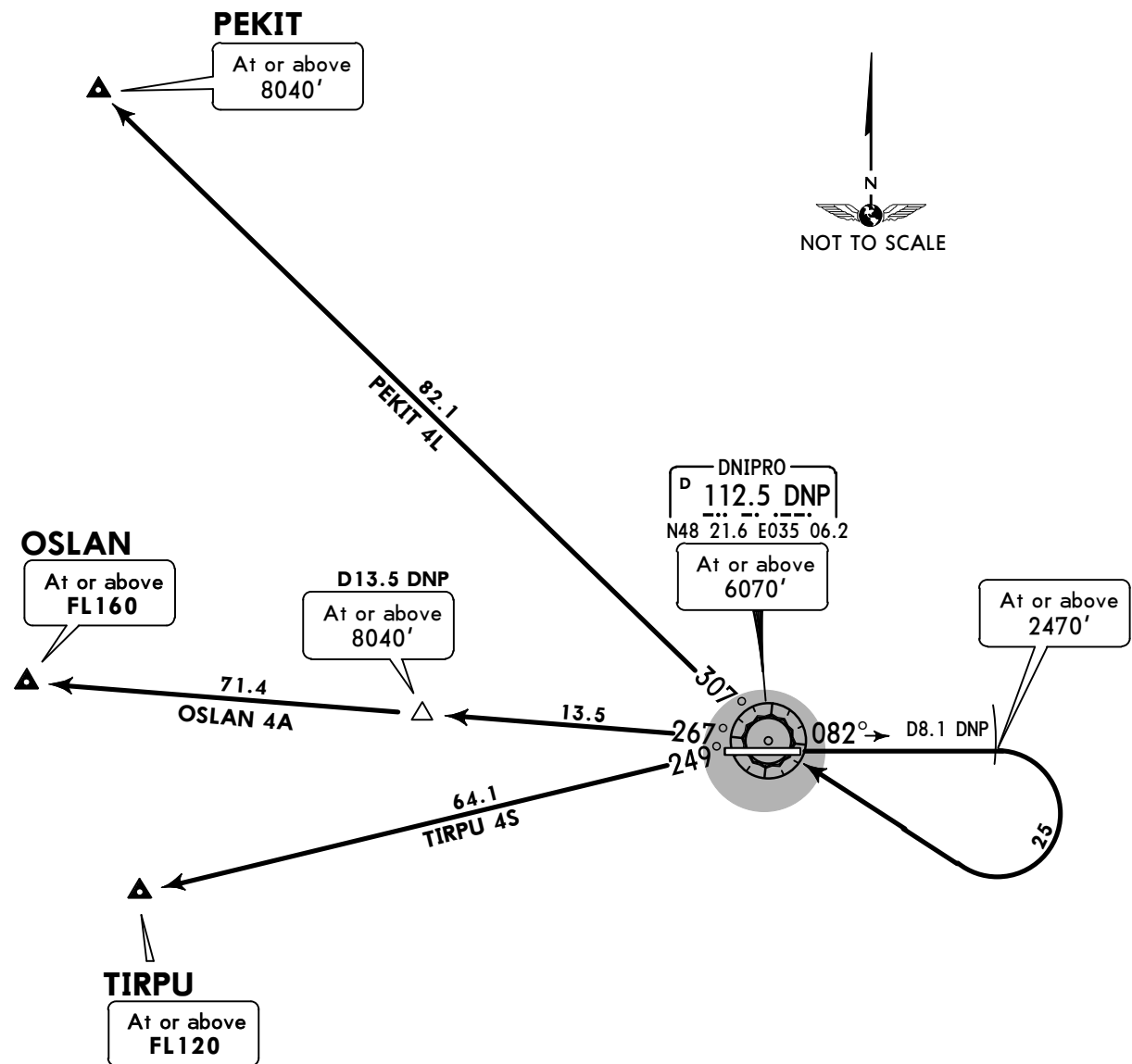
SID

Apt Elev
482'

Trans level: By ATC Trans alt: 10010'
If unable to comply SID procedures advise ATC.



OSLAN 4A [OSLA4A]
PEKIT 4L [PEKI4L]
TIRPU 4S [TIRP4S]
RWY 08 DEPARTURES



These SIDs require a minimum climb gradient of 4.5% up to 2470'.

Gnd speed-KT	75	100	150	200	250	300
4.5% V/V (fpm)	342	456	684	911	1139	1367

If unable to comply advise ATC.

FT/METER CONVERSION	
	QNH
2470'	- 750m
6070'	- 1850m
8040'	- 2450m
10010'	- 3050m

SID	ROUTING
OSLAN 4A	On 082° track to D8.1 DNP, turn RIGHT to DNP VOR, turn LEFT, DNP R-267 to OSLAN.
PEKIT 4L	On 082° track to D8.1 DNP, turn RIGHT to DNP VOR, turn RIGHT, DNP R-307 to PEKIT.
TIRPU 4S	On 082° track to D8.1 DNP, turn RIGHT to DNP VOR, turn LEFT, DNP R-249 to TIRPU.

UKDD/DNK

JEPPESEN

DNIPRO, UKRAINE

DNIPROPETROVS'K INTL

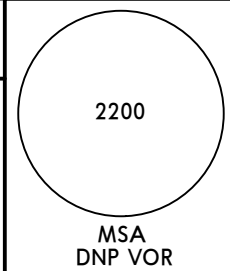
18 MAY 18

10-3J

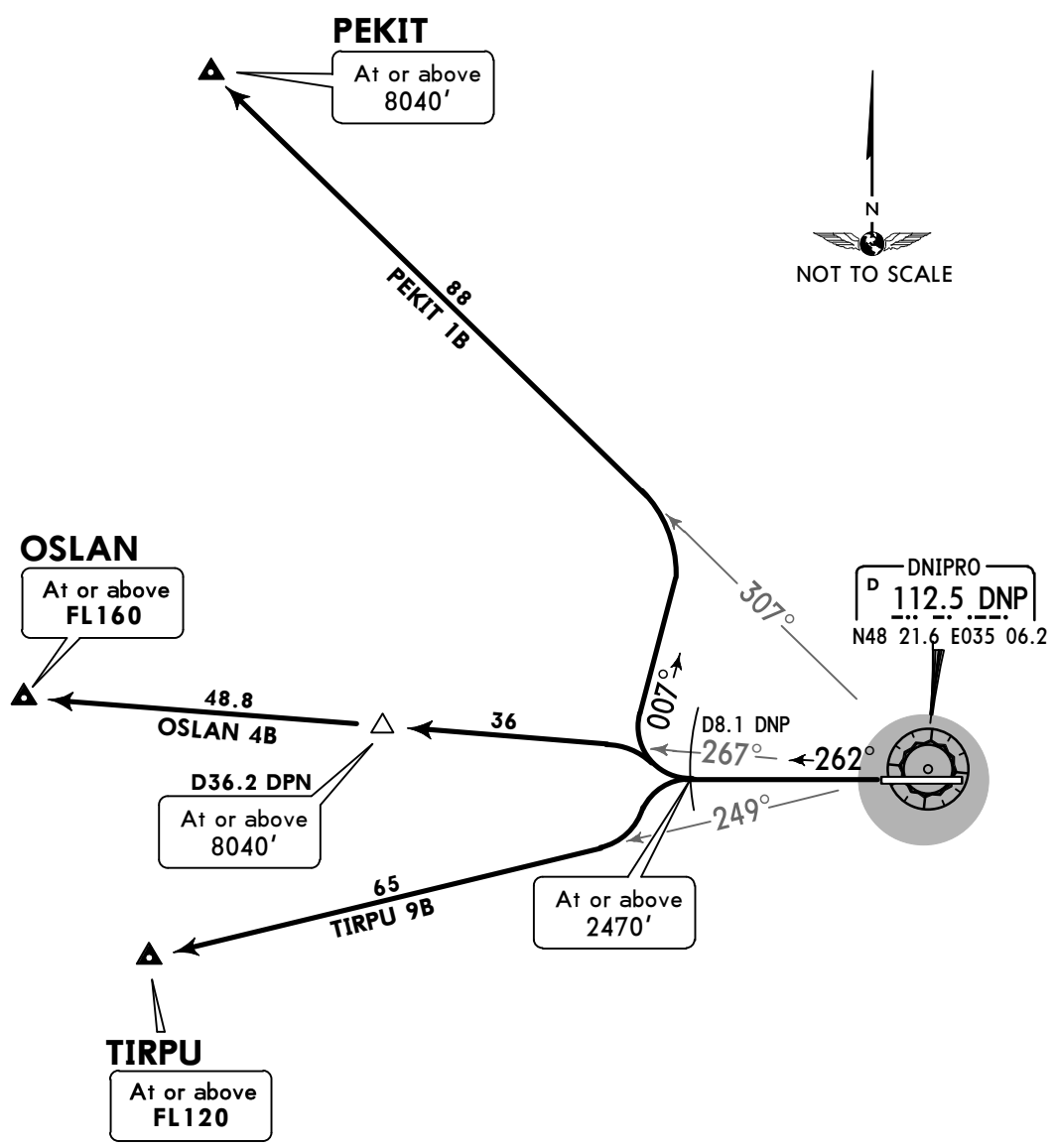
Eff 24 May

SID

Apt Elev 482' Trans level: By ATC Trans alt: 10010'
If unable to comply SID procedures advise ATC.



OSLAN 4B [OSLA4B]
PEKIT 1B [PEKI1B]
TIRPU 9B [TIRP9B]
RWY 26 DEPARTURES



FT/METER CONVERSION

QNH	
2470'	- 750m
8040'	- 2450m
10010'	- 3050m

These SIDs require a minimum climb gradient of 5.0% up to 2470'.

Gnd speed-KT	75	100	150	200	250	300
5.0% V/V (fpm)	380	506	760	1013	1266	1519

If unable to comply advise ATC.

SID	ROUTING
OSKAN 4B	On 262° track to D8.1 DNP, turn RIGHT, intercept DNP R-267 to OSKAN.
PEKIT 1B	On 262° track to D8.1 DNP, turn RIGHT, 007° track, turn LEFT, intercept DNP R-307 to PEKIT.
TIRPU 9B	On 262° track to D8.1 DNP, turn LEFT, intercept DNP R-249 to TIRPU.

UKDD/DNK



DNIPRO, UKRAINE

DNIPROPETROVS'K INTL

18 MAY 18

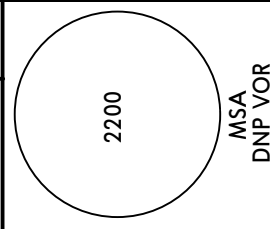
(10-3K)

Eff 24 May

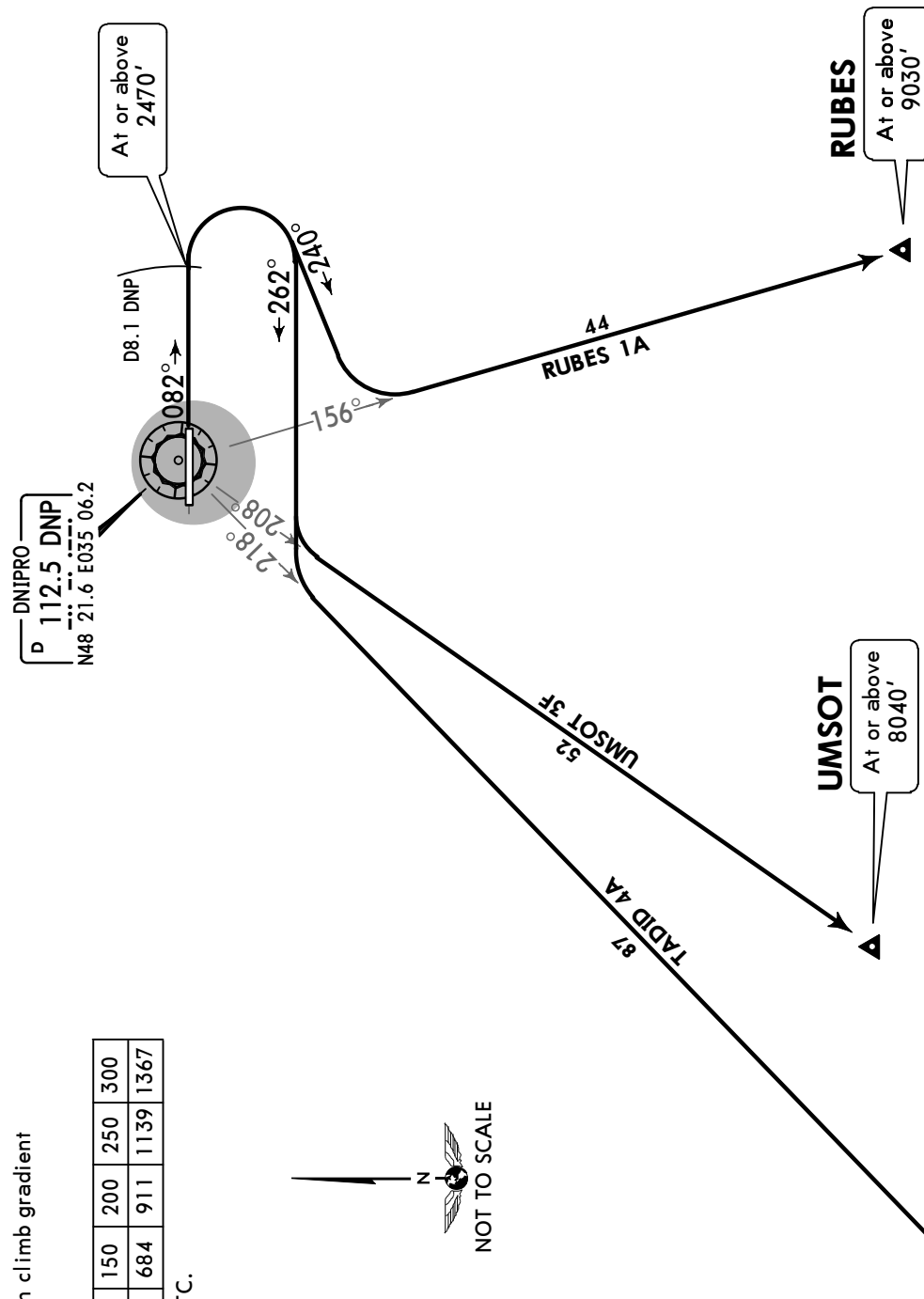
SID

Apt Elev
482'

Trans level: By ATC Trans alt: 10010'
If unable to comply SID procedures advise ATC.



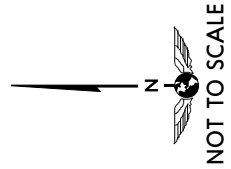
**RUBES 1A [RUBE1A]
TADID 4A [TADI4A]
UMSOT 3F [UMSO3F]
RWY 08 DEPARTURES**



These SIDs require a minimum climb gradient of 4.5% up to 2470'.

Gnd speed-KT	75	100	150	200	250	300
4.5% V/V (fpm)	342	456	684	911	1139	1367

If unable to comply advise ATC.



FT/METER CONVERSION

QNH	
2470' -	750m
8040' -	2450m
9030' -	2750m
10010' -	3050m

SID	ROUTING
RUBES 1A	On 082° track to D8.1 DNP, turn RIGHT, 240° track, turn LEFT, intercept DNP R-156 to RUBES.
TADID 4A	On 082° track to D8.1 DNP, turn RIGHT, 262° track, turn LEFT, intercept DNP R-218 to TADID.
UMSOT 3F	On 082° track to D8.1 DNP, turn RIGHT, 262° track, turn LEFT, intercept DNP R-208 to UMSOT.

UKDD/DNK

JEPPESEN

DNIPRO, UKRAINE

DNIPROPETROVS'K INTL

18 MAY 18

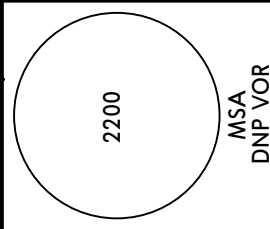
10-3L

Eff 24 May

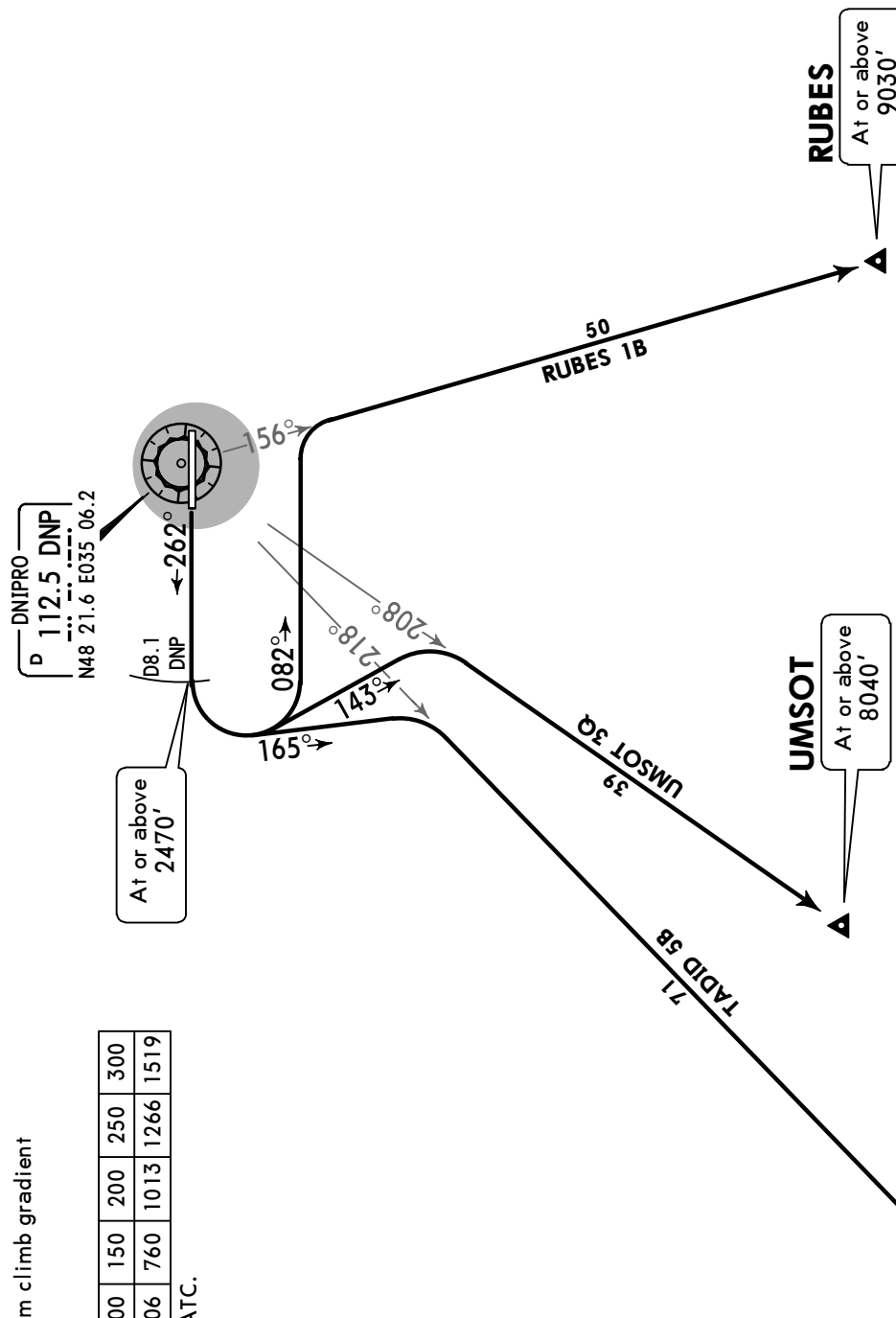
SID

Apt Elev
482'

Trans level: By ATC Trans alt: 10010'
If unable to comply SID procedures advise ATC.



RUBES 1B [RUBE1B]
TADID 5B [TADI5B]
UMSOT 3Q [UMSO3Q]
RWY 26 DEPARTURES



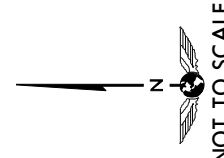
These SIDs require a minimum climb gradient of 5.0% up to 2470'.

Gnd speed-KT	75	100	150	200	250	300
5.0% V/V (fpm)	380	506	760	1013	1266	1519

If unable to comply advise ATC.

FT/METER CONVERSION

QNH	
2470'	- 750m
8040'	- 2450m
9030'	- 2750m
10010'	- 3050m



SID	ROUTING
RUBES 1B	On 262° track to D8.1 DNP, turn LEFT, 082° track, turn RIGHT, intercept DNP R-156 to RUBES.
TADID 5B	On 262° track to D8.1 DNP, turn LEFT, 165° track, turn RIGHT, intercept DNP R-218 to TADID.
UMSOT 3Q	On 262° track to D8.1 DNP, turn LEFT, 143° track, turn RIGHT, intercept DNP R-208 to UMSOT.

UKDD/DNK

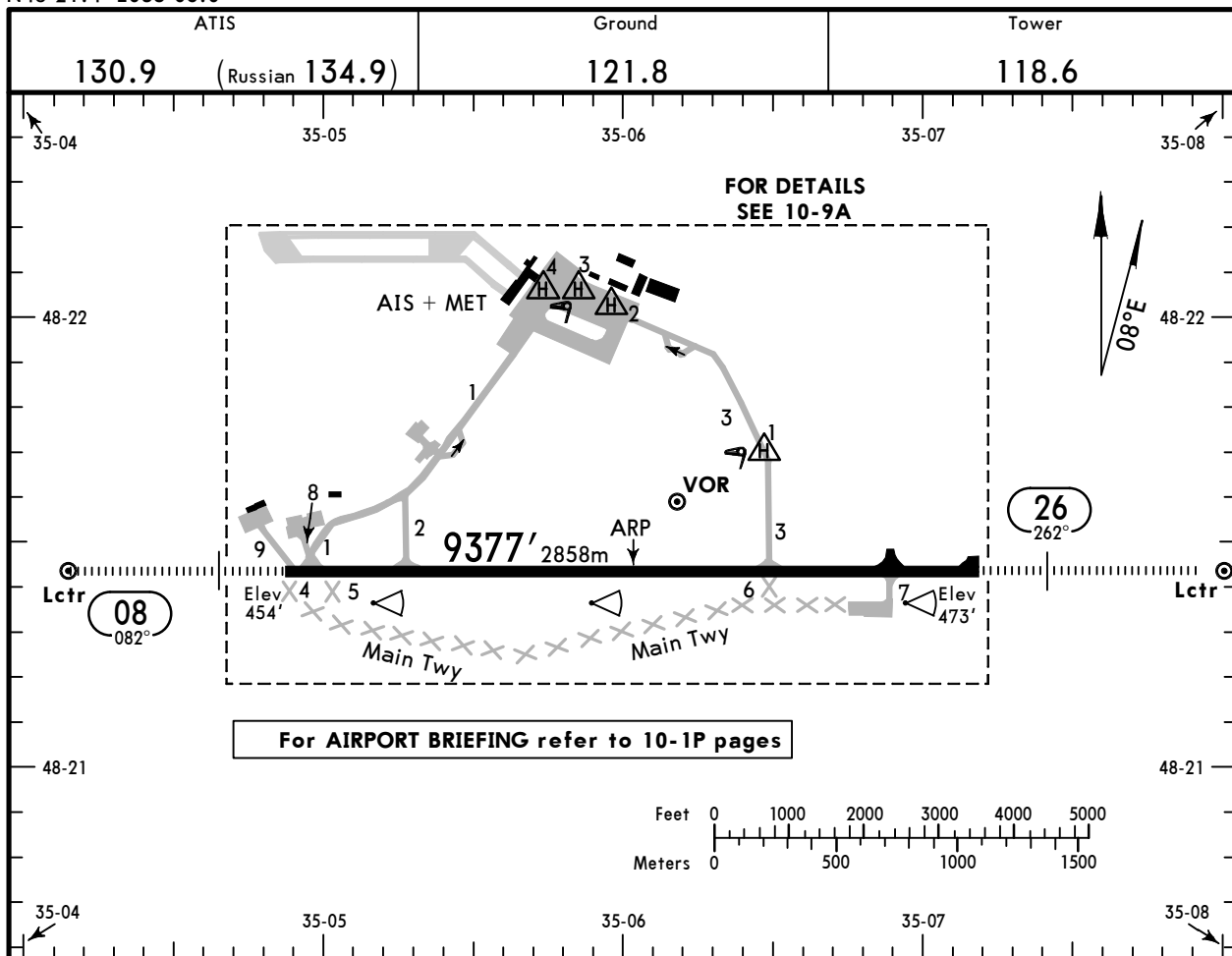
Apt Elev **482'**
N48 21.4 E035 06.0



11 MAY 18 **(10-9)** Eff 24 May

DNIPRO, UKRAINE

DNIPROPETROVS'K



RWY	ADDITIONAL RUNWAY INFORMATION				USABLE LENGTHS		TAKE-OFF	WIDTH
	HIRL (60m)	HIALS	PAPI-L (angle)	RVR	Threshold	Glide Slope		
08	HIRL (60m)	HIALS	PAPI-L (angle 2.80°)	RVR		8283' 2525m	①	144'
26	HIRL (60m)	HIALS	PAPI-L (angle 3.00°)	RVR		8526' 2599m		44m

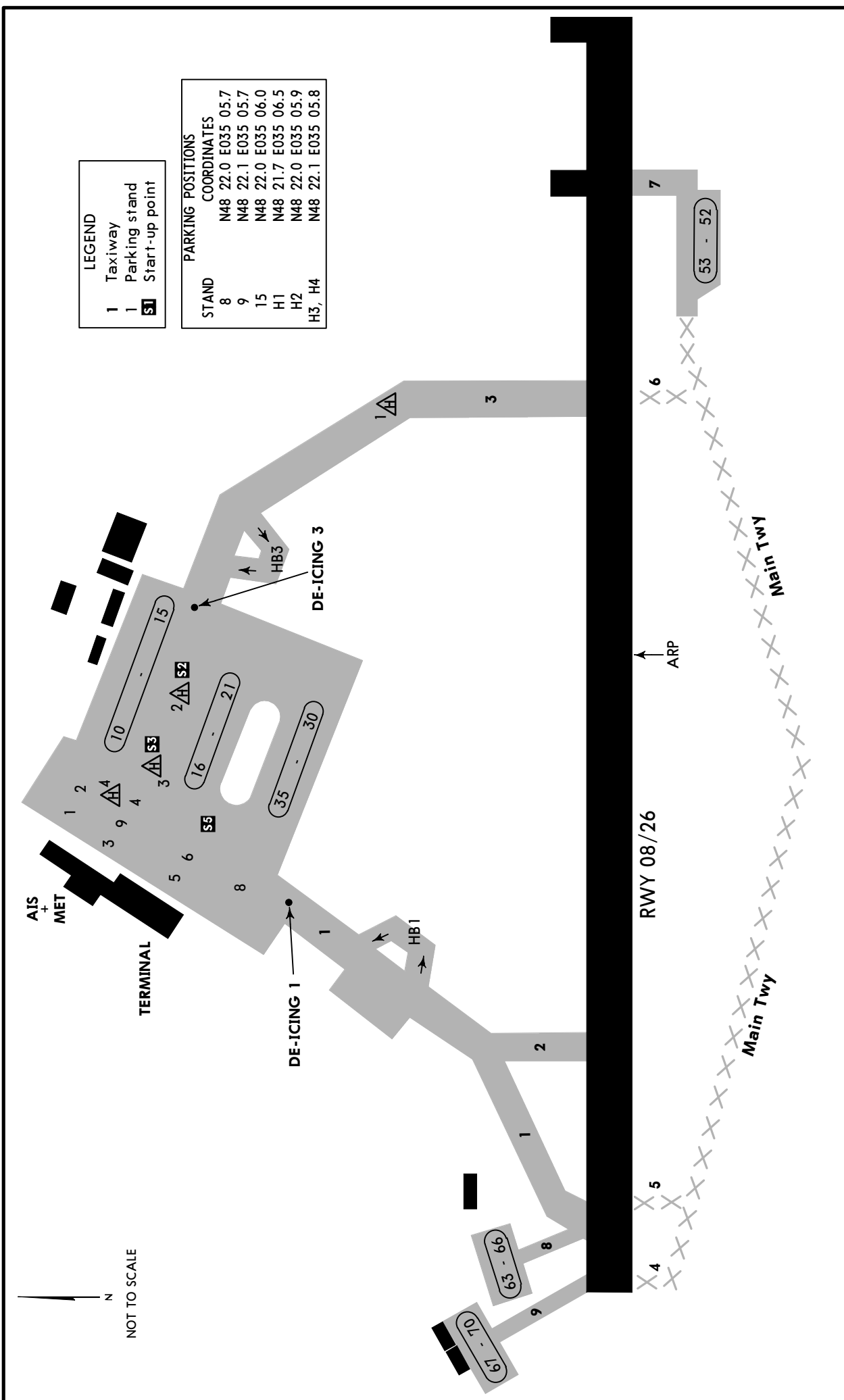
① TAKE-OFF RUN AVAILABLE

RWY 08:
From rwy head 9377' (2858m)
twy 1 int 9022' (2750m)
twy 2 int 7710' (2350m)

RWY 26:
From rwy head 9377' (2858m)
twy 7 int 8169' (2490m)
twy 3 int 6562' (2000m)

JAR-OPS			TAKE-OFF ①
LVP must be in force		All Rwys	
	RCLM (DAY only) or RL	RCLM (DAY only) or RL	NIL (DAY only)
A			
B	250m	400m	500m
C			
D	300m		

① Operators applying U.S. Ops Specs: CL required below 300m.



UKDD/DNK



Standard
DNIPRO, UKRAINE
 DNIPROPETROVS'K

STRAIGHT-IN RWY	A	B	C	D
08				
ILS FULL ALS out	654' (200') R550m① R1200m	654' (200') R550m① R1200m	654' (200') R550m① R1200m	654' (200') R550m① R1200m
LOC ② ALS out	760' (306') R750m R1400m	760' (306') R750m R1400m	760' (306') R750m R1400m	760' (306') R750m R1400m
VOR ② ALS out	840' (386') R1100m R1500m	840' (386') R1100m R1500m	840' (386') R1100m R1800m	840' (386') R1100m R1800m
NDB ② with DME ALS out	850' (396') R1100m R1500m	850' (396') R1100m R1500m	850' (396') R1100m R1800m	850' (396') R1100m R1800m
NDB ② w/o DME ALS out	900' (446') R1400m R2100m	900' (446') R1400m R2100m	900' (446') R1400m R2100m	900' (446') R1400m R2100m
NDB w/o DME ALS out	900' (446') R1600m R2300m	900' (446') R1600m R2300m	900' (446') R1800m R2500m	900' (446') R1800m R2500m
26				
ILS FULL ALS out	673' (200') R550m① R1200m	673' (200') R550m① R1200m	673' (200') R550m① R1200m	673' (200') R550m① R1200m
LOC ② ALS out	780' (307') R750m R1400m	780' (307') R750m R1400m	780' (307') R750m R1400m	780' (307') R750m R1400m
VOR ② ALS out	870' (397') R1100m R1500m	870' (397') R1100m R1500m	890' (417') R1200m R1900m	910' (437') R1300m R2000m
NDB ② with DME ALS out	870' (397') R1100m R1500m	870' (397') R1100m R1500m	870' (397') R1100m R1800m	870' (397') R1100m R1800m
NDB ② w/o DME ALS out	990' (517') R1600m R2400m	990' (517') R1600m R2400m	990' (517') R1600m R2400m	990' (517') R1600m R2400m
NDB w/o DME ALS out	990' (517') R1800m R2600m	990' (517') R1800m R2600m	990' (517') R2000m R2800m	990' (517') R2000m R2800m

- ① W/o HUD/AP/FD: RVR 750m.
- ② Continuous Descent Final Approach.

CIRCLE-TO-LAND ③	100 KT	135 KT	180 KT	205 KT
After apch to rwy 08 ④	910' (456')	1070' (616')	1200' (746')	1500' (1046')
After apch to rwy 26 ⑤	910' (437') ⑥ V1500m ⑦	1070' (597') V1600m ⑦	1200' (727') V2400m ⑦	1500' (1027') V3600m

- ③ Not authorized North of airport between R-280 and R-045 DNP.
- ④ Circling height based on rwy 08 thresh elev of 454'.
- ⑤ Circling height based on rwy 26 thresh elev of 473'.
- ⑥ after NDB apch: 990' (517').
- ⑦ or higher minimums of preceding straight-in approach.

UKDD/DNK



Standard
DNIPRO, UKRAINE
DNIPROPETROVS'K

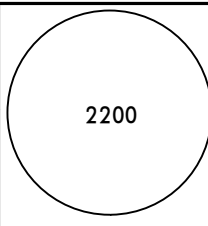
TAKE-OFF RWY 08, 26

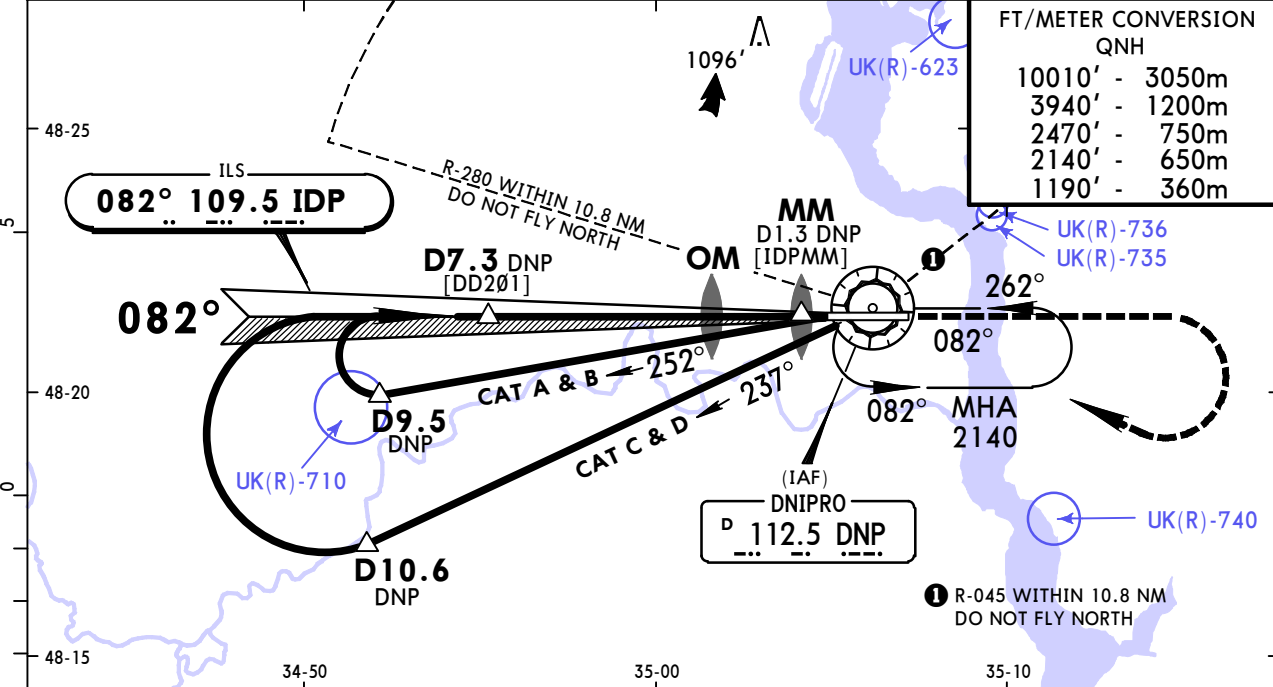
	Low Visibility Take-off		
	Day: RL & RCLM Night: RL	Day: RL or RCLM Night: RL	Adequate vis ref (Day only)
A			
B	R300m	400m	500m
C			
D			

UKDD/DNK
DNIPROPETROVS'K

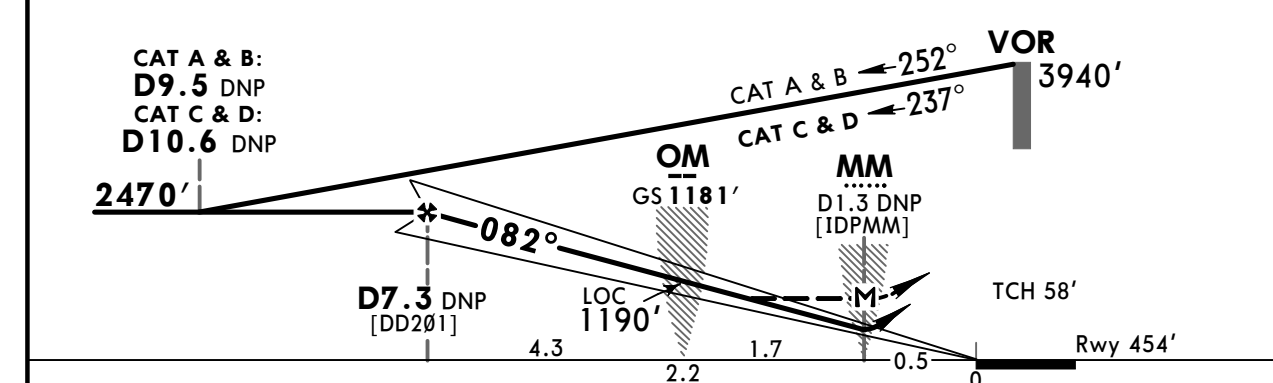
JEPPESSEN
11 MAY 18 **(11-1)** Eff 24 May

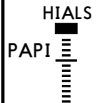
DNIPRO, UKRAINE
ILS or LOC Rwy 08

ATIS 130.9 (Russian 134.9)		Radar (APP) 119.4		Tower 118.6		Ground 121.8	
LOC IDP 109.5	Final Apch Crs 082°	GS LOM 1181' (727')	ILS DA(H) 654' (200')	Apt Elev 482' Rwy 454'		 2200 MSA DNP VOR	
MISSED APCH: Climb on 082° to 2470', then turn RIGHT to VOR climbing to 3940', then according to chart.							
Alt Set: hPa		Rwy Elev: 17 hPa		Trans level: By ATC		Trans alt: 10010'	
DME required.							



LOC (GS out)	DNP DME	5.9	4.9	3.8	2.7	1.6
	ALTITUDE	2040'	1720'	1390'	1070'	740'



Gnd speed-Kts	70	90	100	120	140	160	 2470' on 082°
ILS GS or LOC Descent Angle 2.80°	347	446	495	594	693	792	
MAP at MM/D1.3 DNP							

JAR-OPS STRAIGHT-IN LANDING RWY 08				CIRCLE-TO-LAND	
ILS DA(H) 654' (200')		LOC (GS out) MDA(H) 760' (306')		Not authorized North of airport between R-280 and R-045	
	FULL	ALS out		Max Kts.	MDA(H) VIS
A			RVR 900m	100	910'(456') 1500m
B				135	1070'(616') 1600m
C	RVR 550m	RVR 1000m	RVR 1000m	180	1200'(746') 2400m
D			RVR 1400m	205	1500'(1046') 3600m

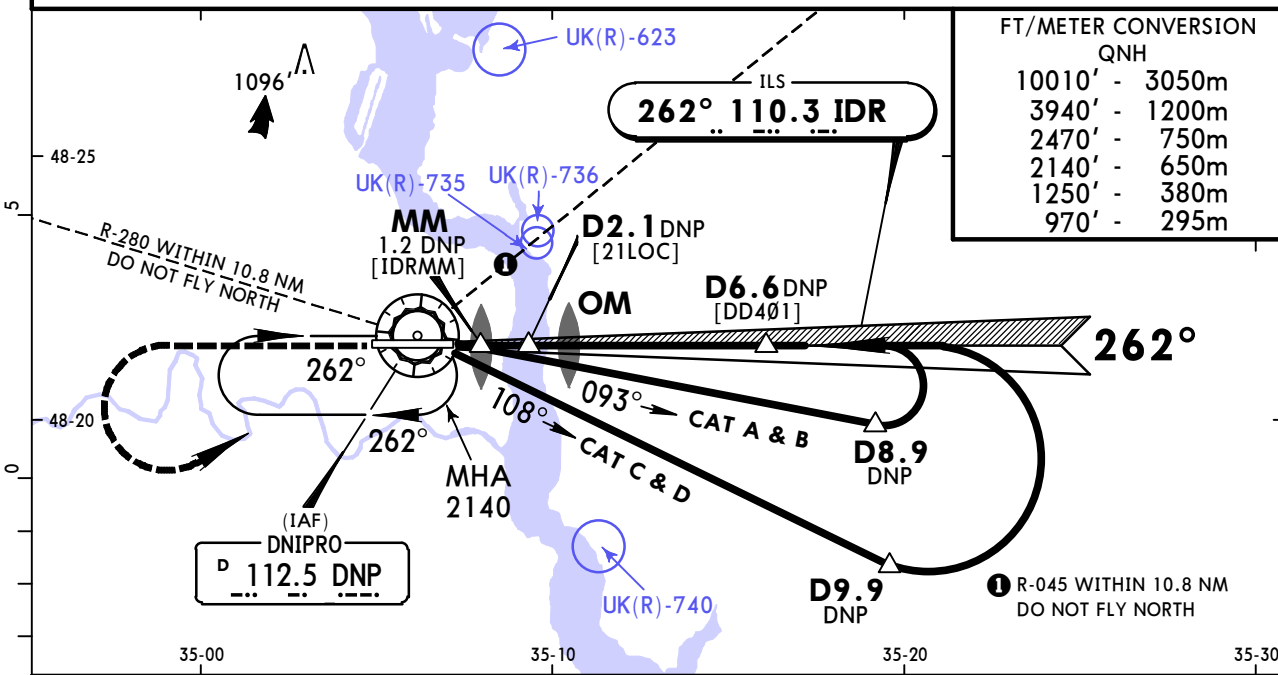
1 Circling height based on rwy 08 thresh elev of 454'.
 CHANGES: Location name. Missed apch. Bearings. OM & MM. © JEPPESSEN, 2002, 2018. ALL RIGHTS RESERVED.

UKDD/DNK
DNIPROPETROVS'K

JEPPESSEN
11 MAY 18 **11-2** Eff 24 May

DNIPRO, UKRAINE
ILS or LOC Rwy 26

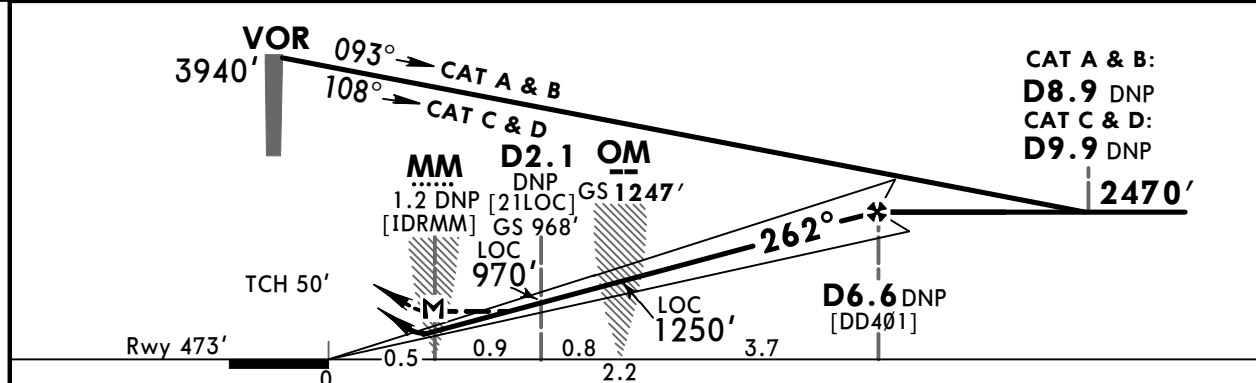
ATIS 130.9 (Russian 134.9)		Radar (APP) 119.4		Tower 118.6		Ground 121.8	
LOC IDR 110.3	Final Apch Crs 262°	GS LOM 1247' (774')	ILS DA(H) 673' (200')	Apt Elev 482' Rwy 473'			
MISSED APCH: Climb on 262° to 2470', then turn LEFT to VOR climbing to 3940', then according to chart.							
DME required.		Alt Set: hPa	Rwy Elev: 17 hPa	Trans level: By ATC		Trans alt: 10010'	
Ground proximity warning system short term alerting is possible on final apch between 990' AMSL and 660' AMSL due to terrain.							



FT/METER CONVERSION
QNH

10010'	3050m
3940'	1200m
2470'	750m
2140'	650m
1250'	380m
970'	295m

LOC (GS out)	DNP DME	1.6	2.7	3.8	4.9	5.9
	ALTITUDE	840'	1190'	1550'	1900'	2260'



Gnd speed-Kts	70	90	100	120	140	160	
ILS GS	3.00°	372	478	531	637	849	
LOC Descent Angle	3.10°	384	494	548	658	878	
MAP at MM/D1.2 DNP							

JAR-OPS STRAIGHT-IN LANDING RWY 26				CIRCLE-TO-LAND 1			
ILS DA(H) 673' (200')		LOC (GS out) MDA(H) 780' (307')		Not authorized North of airport between R-280 and R-045			
FULL		ALS out		Max Kts	MDA(H) _____ VIS _____		
A		RVR 900m	RVR 1500m			100	910' (437') 1500m
B						135	1070' (597') 1600m
C	RVR 550m	RVR 1000m	RVR 1000m			180	1200' (727') 2400m
D			RVR 1400m	205	1500' (1027') 3600m		

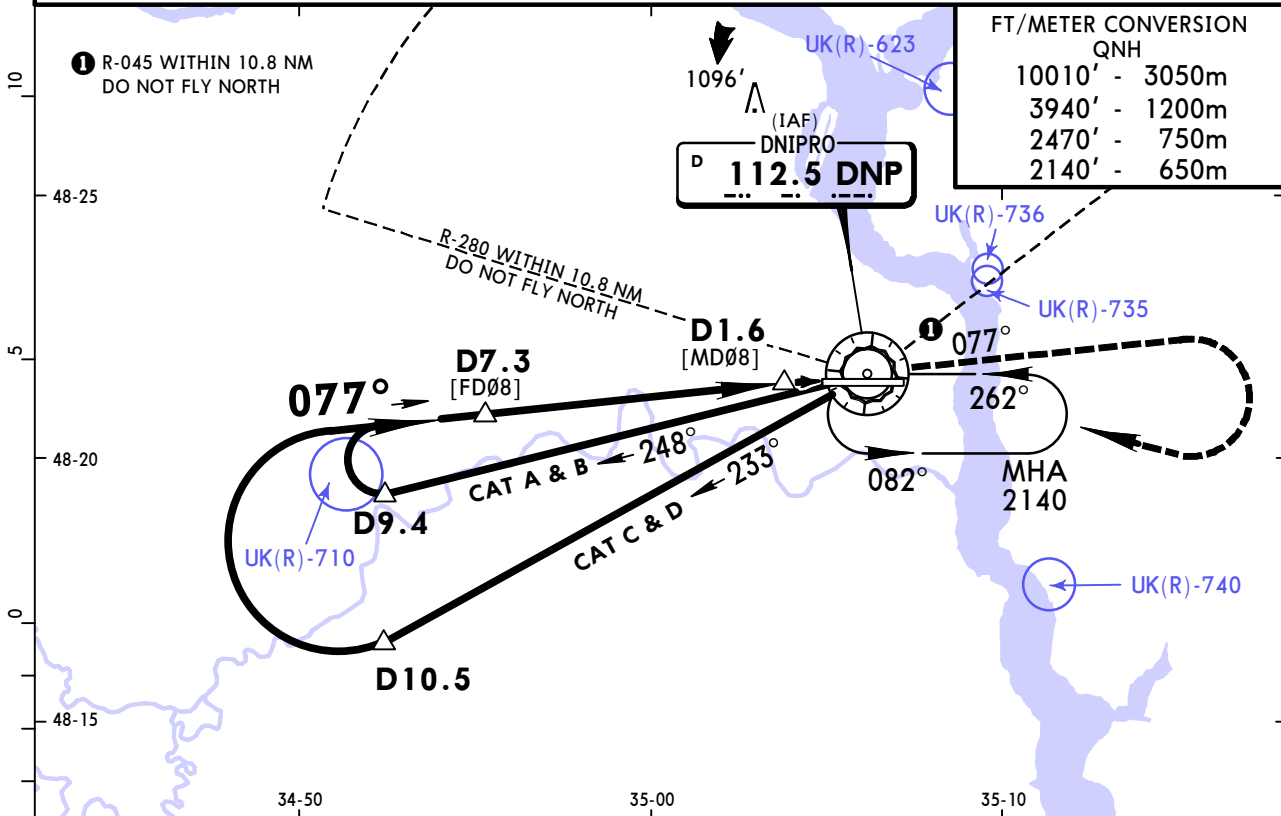
1 Circling height based on rwy 26 thresh elev of 473'.

UKDD/DNK
DNIPROPETROVS'K

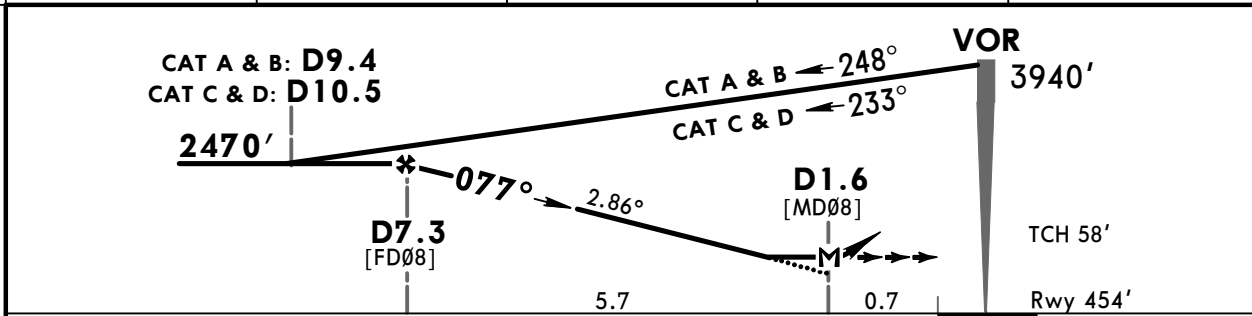
JEPPESEN
11 MAY 18 **(13-1)** **Eff 24 May**

DNIPRO, UKRAINE
VOR Rwy 08

BRIEFING STRIP™	ATIS	Radar (APP)	Tower	Ground	<div style="border: 1px solid black; border-radius: 50%; width: 100px; height: 100px; margin: 0 auto; display: flex; align-items: center; justify-content: center;">2200</div> <p>MSA DNP VOR</p>
	130.9 (Russian 134.9)	119.4	118.6	121.8	
VOR DNP 112.5	Final Apch Crs 077°	Minimum Alt D7.3 2470' (2016')	MDA(H) 840' (386')	Apt Elev 482' Rwy 454'	
MISSED APCH: Climb on 077° to 2470', then turn RIGHT to VOR climbing to 3940', then according to chart.					
Alt Set: hPa		Rwy Elev: 17 hPa	Trans level: By ATC		Trans alt: 10010'
DME required.					



DNP DME	5.9	4.9	3.8	2.7
ALTITUDE	2040'	1710'	1390'	1060'



Gnd speed-Kts	70	90	100	120	140	160	
Descent Angle	2.86°	354	455	506	607	809	
MAP at D1.6							

PANS OPS	JAR-OPS STRAIGHT-IN LANDING RWY 08			CIRCLE-TO-LAND 1		
	MDA(H) 840' (386')			Not authorized North of airport between R-280 and R-045		
	ALS out			Max Kts	MDA(H)	VIS
	A	RVR 900m	RVR 1500m	100	910' (456')	1500m
	B	RVR 1000m	RVR 1800m	135	1070' (616')	1600m
C	RVR 1000m	RVR 2000m	180	1200' (746')	2400m	
D	RVR 1400m	RVR 2000m	205	1500' (1046')	3600m	

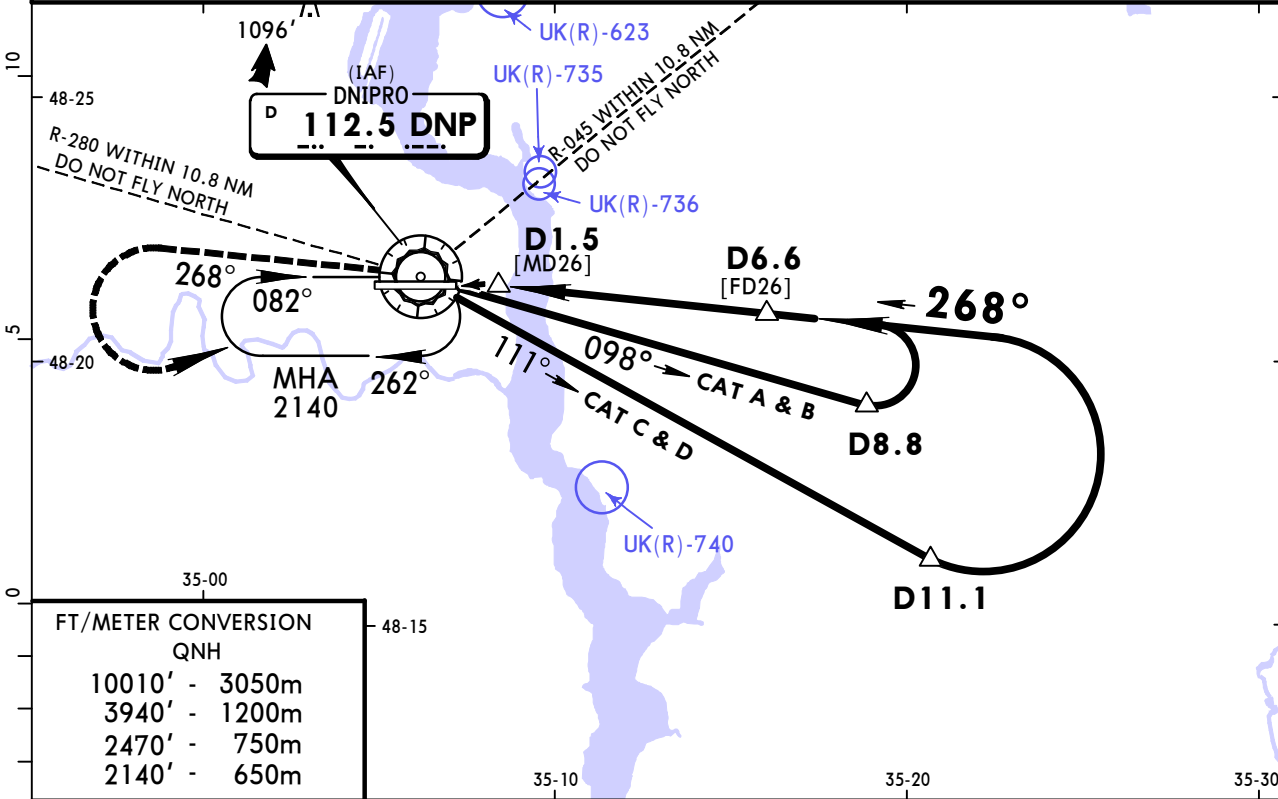
1 Circling height based on rwy 08 thresh elev of 454'.

UKDD/DNK
DNIPROPETROVS'K

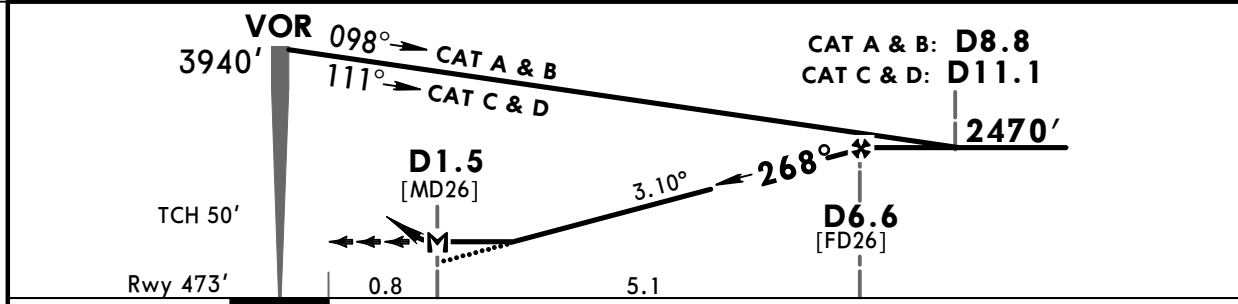
JEPPESEN
11 MAY 18 **(13-2)** Eff 24 May

DNIPRO, UKRAINE
VOR Rwy 26

BRIEFING STRIP™	ATIS	Radar (APP)	Tower	Ground	<div style="border: 1px solid black; border-radius: 50%; width: 100px; height: 100px; margin: 0 auto; display: flex; align-items: center; justify-content: center;"> 2200 </div> <p>MSA DNP VOR</p>
	130.9 (Russian 134.9)	119.4	118.6	121.8	
VOR DNP 112.5	Final Apch Crs 268°	Minimum Alt D6.6 2470' (1997')	MDA(H) Refer to Minimums	Apt Elev 482' Rwy 473'	
<p>MISSED APCH: Climb on 268° to 2470', then turn LEFT to VOR climbing to 3940', then according to chart.</p>					
DME required.		Alt Set: hPa	Rwy Elev: 17 hPa	Trans level: By ATC	Trans alt: 10010'
Ground proximity warning system short term alerting is possible on final apch between 990' AMSL and 660' AMSL due to terrain.					



DNP DME	2.7	3.8	4.9	5.9
ALTITUDE	1190'	1550'	1900'	2250'



Gnd speed-Kts	70	90	100	120	140	160	HIALS PAPI 2470' on 268°
Descent Angle 3.10°	384	494	548	658	768	878	
MAP at D1.5							

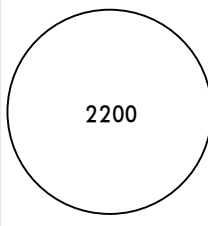
JAR-OPS				STRAIGHT-IN LANDING RWY 26				CIRCLE-TO-LAND I			
				C: 890' (417')				Not authorized North of airport between R-280 and R-045			
				MDA(H) AB: 870' (397') D: 910' (437')							
				ALS out				Max Kts			
A	RVR 900m			RVR 1500m	100	MDA(H) 910' (437')			1500m		
B	RVR 1000m			RVR 1800m	135	1070' (597')			1600m		
C	RVR 1400m			RVR 2000m	180	1200' (727')			2400m		
D					205	1500' (1027')			3600m		

I Circling height based on rwy 26 thresh elev of 473'.

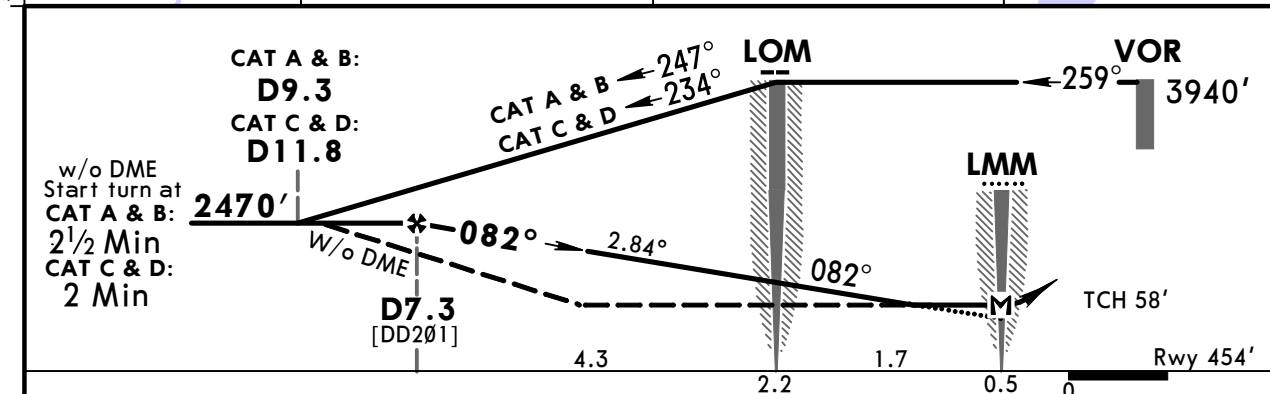
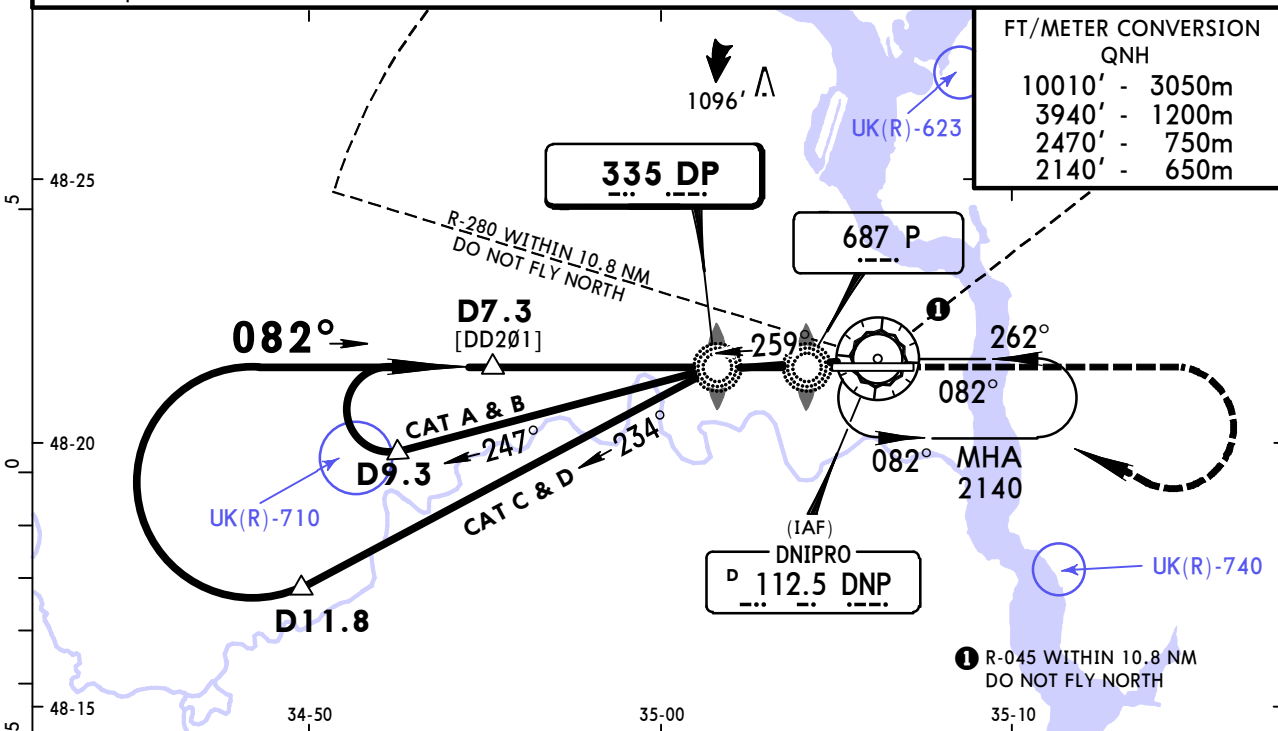
UKDD/DNK
DNIPROPETROVS'K

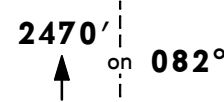
JEPPESSEN
11 MAY 18 **(16-1)** Eff 24 May

DNIPRO, UKRAINE
NDB Rwy 08

ATIS 130.9 (Russian 134.9)		Radar (APP) 119.4	Tower 118.6	Ground 121.8
NDB DP 335	Final Apch Crs 082°	With DME Minimum Alt D7.3 2470' (2016')	With DME MDA(H) 850' (396')	Apt Elev 482' Rwy 454'
		W/o DME Minimum Alt No FAF	W/o DME MDA(H) 900' (446')	
MISSED APCH: Climb on 082° to 2470', then turn RIGHT to VOR climbing to 3940', then as directed.				 MSA DNP VOR

Alt Set: hPa Rwy Elev: 17 hPa Trans level: By ATC Trans alt: 10010'
DME required for FAF determination.



Gnd speed-Kts	70	90	100	120	140	160	HIALS PAPI 
Descent Angle	2.84°	352	452	502	603	804	
MAP at LMM							

JAR-OPS STRAIGHT-IN LANDING RWY 08				CIRCLE-TO-LAND	
with DME MDA(H) 850' (396')		w/o DME MDA(H) 900' (446')		Not authorized North of airport between R-280 and R-045	
	ALS out		ALS out	Max Kts	MDA(H) VIS
A	RVR 900m	RVR 1500m	RVR 900m	100	910' (456') 1500m
B	RVR 1000m	RVR 1500m	RVR 1000m	135	1070' (616') 1600m
C	RVR 1000m	RVR 1800m	RVR 1000m	180	1200' (746') 2400m
D	RVR 1400m	RVR 2000m	RVR 1400m	205	1500' (1046') 3600m

1 Circling height based on rwy 08 thresh elev of 454'.
CHANGES: Location name. Missed apch. Procedure. © JEPPESSEN, 2012, 2018. ALL RIGHTS RESERVED.

BRIEFING STRIP™

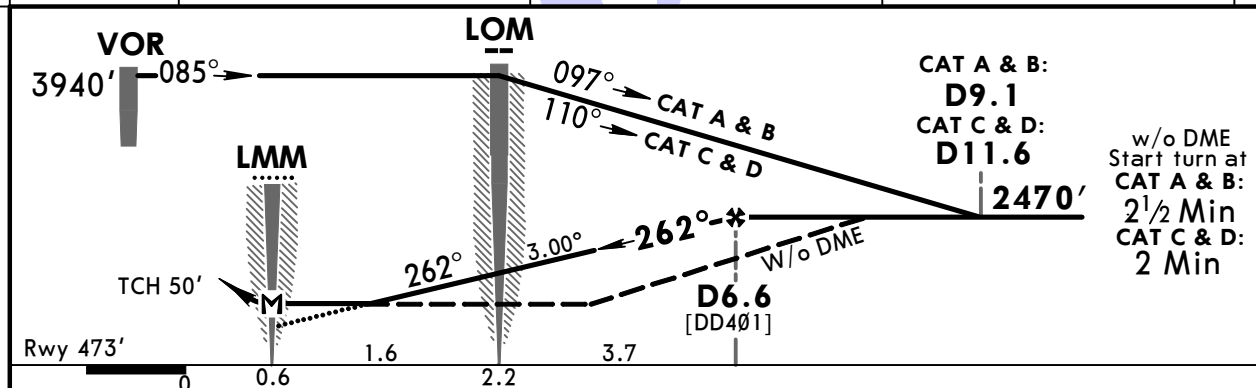
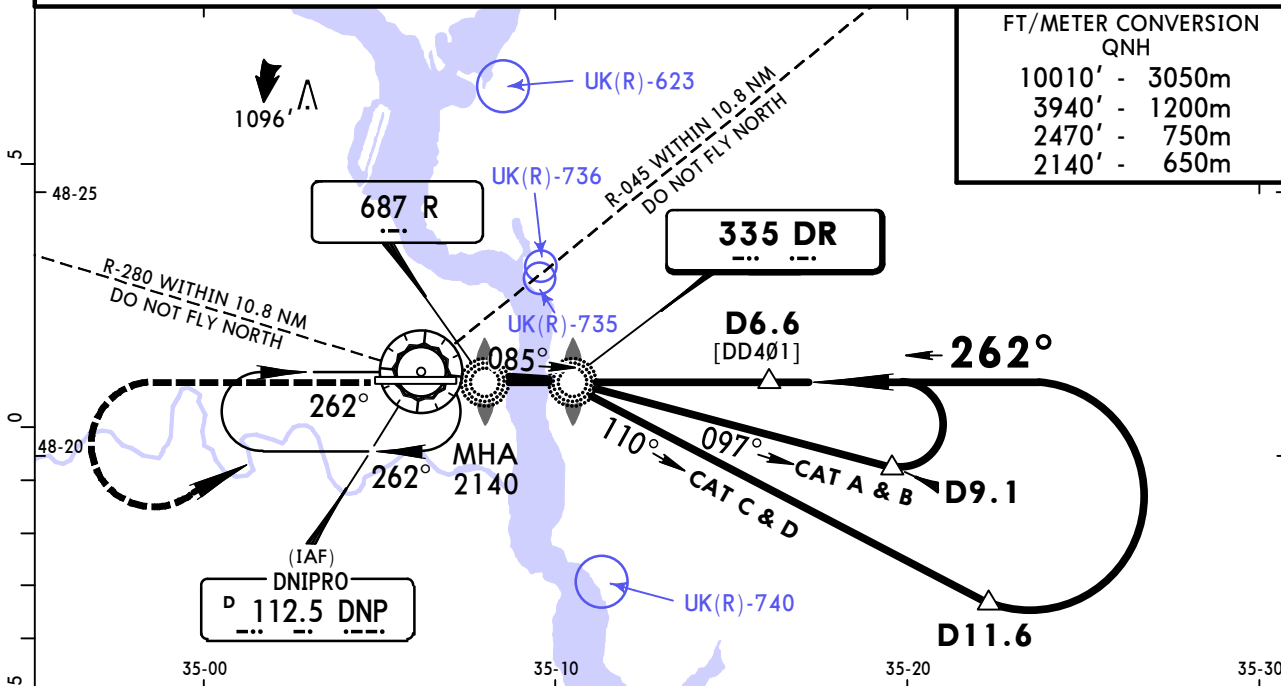
PANS OPS

UKDD/DNK
DNIPROPETROVS'K

JEPPESSEN
11 MAY 18 **(16-2)** Eff 24 May

DNIPRO, UKRAINE
NDB Rwy 26

ATIS 130.9 (Russian 134.9)		Radar (APP) 119.4		Tower 118.6		Ground 121.8	
NDB DR 335	Final Apch Crs 262°	With DME Minimum Alt D6.6 2470' (1997')	With DME MDA(H) 870' (397')	Apt Elev 482' Rwy 473'		2200 MSA DNP VOR	
		W/o DME Minimum Alt No FAF	W/o DME MDA(H) 990' (517')				
MISSED APCH: Climb on 262° to 2470', then turn LEFT to VOR climbing to 3940', then according to chart.							
Alt Set: hPa		Rwy Elev: 17 hPa		Trans level: By ATC		Trans alt: 10010'	
DME required for FAF determination.							
Ground proximity warning system short term alerting is possible on final apch between 990' AMSL and and 660' AMSL due to terrain.							



MAP at LMM						
------------	--	--	--	--	--	--

JAR-OPS STRAIGHT-IN LANDING RWY 26				CIRCLE-TO-LAND 1	
with DME MDA(H) 870' (397')		w/o DME MDA(H) 990' (517')		Not authorized North of airport between R-280 and R-045	
	ALS out		ALS out	Max Kts	MDA(H) VIS
A	RVR 900m	RVR 1500m	RVR 1000m	100	990' (517') 1500m
B	RVR 1000m	RVR 1500m	RVR 1200m	135	1070' (597') 1600m
C	RVR 1000m	RVR 1800m	RVR 2000m	180	1200' (727') 2400m
D	RVR 1400m	RVR 2000m	RVR 1600m	205	1500' (1027') 3600m

1 Circling height based on rwy 26 thresh elev of 473'.

Chart changes since cycle 19-2018

ADD = added chart, REV = revised chart, DEL = deleted chart.

ACT	PROCEDURE IDENT	INDEX	REV DATE	EFF DATE
-----	-----------------	-------	----------	----------

DNIPRO, (DNIPROPETROVS'K - UKDD)

TERMINAL CHART CHANGE NOTICES

No Chart Change Notices for Airport UKDD