

UKKT AD 2 KYIV/Antonov-1 / КИЇВ/АНТОНОВ-1**UKKT AD 2.1 Aerodrome location indicator and name / Показник місця розташування та назва аеродрому**

UKKT - Kyiv/Antonov-1 National

UKKT - Київ/Антонов-1 Національний

UKKT AD 2.2 Aerodrome geographical and administrative data / Географічні та адміністративні дані аеродрому

1	ARP coordinates and site at AD	502844N 0302303E in the centre of RWY
2	Direction and distance from (city)	9 km NW from centre of the city
3	Elevation/Reference temperature	177 M / 26°C
4	Geoid undulation at AD ELEV PSN	26 M
5	MAG VAR/Annual Change	7° E (2014) / nil
6	AD Administration, address, telephone, telefax, telex, AFS (AMHS)	ANTONOV Company aerodrome Kyiv/Antonov-1 Postal Address: Akademika Tupolieva 1, Kyiv, Ukraine, 03062 Phone: +38 044 454 28 11; +38 044 454 28 69 Fax: +38 044 454 02 35; +38 045 979 99 15 AFS: UKKTZTX, UKKMZPZX
7	Types of traffic permitted (IFR/VFR)	IFR/VFR
8	Remarks	nil

UKKT AD 2.3 Operational hours / Години роботи

1	AD Administration	MON-FRI 07:30-15:00 (06:30-14:00) except HOL
2	Customs and immigration	nil
3	Health and sanitation	As AD Administration
4	AIS Briefing Office	As AD Administration Consultation provided by KYIV/ Antonov-2 Phone: +38 044 454 28 69 Phone/ Fax: +38 045 979 99 15, brief@antonov.kiev.ua
5	ATS Reporting office (ARO)	Air traffic services provided by request. Request should be submitted to AD administration 2 working days in advance
6	MET Briefing Office	As AD Administration
7	Air traffic service	Air traffic services provided by request. Request should be submitted to AD administration 2 working days in advance
8	Fuelling	As AD Administration
9	Handling	As AD Administration
10	Security	As AD Administration
11	De-icing	nil
12	Remarks	Aerodrome operates by agreement with State Enterprise "ANTONOV". In other time service is given on demand. A query must be given administration of AD in advance 2 working days.

UKKT AD 2.4 Handling services and facilities / Служби та засоби для обслуговування

1	Cargo-Handling facilities	All modern equipment for cargo lifting up to 40 tons
2	Fuel/oil types	nil
3	Fuelling facilities/capacity	nil
4	De-icing facilities	nil
5	Hangar space for visiting aircraft	AVBL for AN124, AN70 and ACFT of type AN12, AN24, AN140, AN148, AN158, AN178
6	Repair facilities for visiting aircraft	Major and minor repairs ACFT of type AN
7	Remarks	nil

UKKT AD 2.5 Passenger facilities / Засоби для обслуговування пасажирів

1	Hotels	In the city
2	Restaurants	In the city
3	Transportation	Buses, taxi
4	Medical facilities	First aid at AD. Hospitals in the city
5	Bank and Post Office	In the city
6	Tourist Office	In the city
7	Remarks	nil

UKKT AD 2.6 Rescue and firefighting services / Аварійно-рятувальна та протипожежна служби

1	AD category for Fire fighting	CAT 4
2	Rescue equipment	Rescue and fire-fighting vehicles are equipped in accordance with CAT 4
3	Capability for removal of disabled aircraft	AVBL for ACFT AN178 inclusive
4	Remarks	nil

UKKT AD 2.7 Seasonal availability - clearing / Сезонне використання устаткування – видалення опадів

1	Types of clearing equipment	Brush and rotor snow-ploughs, blowers, thermal machines, grader, sand spreaders
2	Clearance priorities	1.RWY и TWY 1 2.ACFT stands 3. access roads
3	Remarks	nil

UKKT AD 2.8 Aprons, taxiways and check locations/positions data / Дані щодо перонів, TWY та місць/пунктів перевірок

1	Apron surface and strength	Apron	Surface	Strength	
		Apron	Concrete	PCN 20/R/B/X/T	
2	Taxiway width, surface and strength	TWY	Width	Surface	Strength
		TWY 1	21 M	Concrete	PCN 19/R/B/X/T
3	Altimeter checkpoint location and elevation	nil			
4	VOR checkpoints	nil			
5	INS checkpoints	nil			
6	Remarks	nil			

UKKT AD 2.9 Surface movement guidance and control system and markings / Система управління наземним рухом і контролю за ним та маркування

1	Use of aircraft stand ID signs, TWY guide lines and visual docking/parking guidance system of aircraft stands	Guidance signs at entrance to/exit from RWY, guidance signs of TWY, TWY guide lines, markings of ACFT stands. Parking is performed by instructions of marshaller
2	RWY and TWY markings and LGT	RWY: THR, designation, centre line, TDZ, Edge MRKD nil LGTD TWY: Centre line, holding positions, MRKD nil LGTD
3	Stop bars and runway guard lights	nil
4	Remarks	nil

UKKT AD 2.10 Aerodrome obstacles / Аеродромні перешкоди

In Area 2					
Obstacle designations	Obstacle type	Obstacle position	Elevation / height	Markings / type, color	Remarks
7	Building	503028.3N 0302424.7E	243 / 70	nil	nil
9	Building	503040.1N 0302445.6E	237 / 64	nil	nil
10	Tube	503032.5N 0302530.9E	262 / 89	night	nil
14	Building	503009.4N 0302519.9E	246 / 72	nil	nil
15	Construction crane	503007.7N 0302520.8E	272 / 99	night	nil
17	Building	503011.2N 0302525.5E	229 / 55	nil	nil
18	Construction crane	503011.7N 0302526.4E	239 / 66	night	nil
19	Construction crane	503010.9N 0302528.2E	243 / 70	night	nil
20	Building	503010.8N 0302528.8E	232 / 59	nil	nil
21	Building	503007.0N 0302524.0E	232 / 59	nil	nil
22	Construction crane	503007.5N 0302525.3E	253 / 79	night	nil
23	Construction crane	503009.0N 0302534.3E	239 / 66	night	nil
27	Building	502957.5N 0302538.8E	241 / 68	day	nil
30	Building	502953.4N 0302537.3E	239 / 66	day	nil
31	Building	502952.5N 0302536.6E	240 / 67	day	nil
33	Building	502947.4N 0302534.0E	233 / 60	nil	nil
34	Construction crane	502947.3N 0302535.2E	243 / 70	night	nil
41	Pipe	502910.1N 0302500.0E	228 / 54	day	nil
46	Construction crane	502856.7N 0302445.3E	245 / 72	night	nil
51	Construction crane	502850.6N 0302445.0E	256 / 83	night	nil
52	building	502858.1N 0302703.6E	262 / 89	night	nil
53	building	502854.9N 0302634.6E	231 / 57	nil	nil
56	building	502846.0N 0302408.3E	237 / 63	nil	nil
57	building	502846.9N 0302454.0E	229 / 55	nil	nil
60	Tree	502844.1N 0302317.1E	194 / 20	nil	nil
61	Building	502840.3N 0302616.1E	243 / 69	nil	nil
62	Construction crane	502842.8N 0302340.1E	230 / 56	night	nil
64	building	502823.5N 0302732.4E	288 / 114	day/night	nil
66	building	502817.6N 0302604.4E	248 / 74	night	nil
67	building	502816.4N 0302712.3E	570 / 397	day/night	nil
70	antenna	502831.8N 0302432.4E	228 / 55	day/night	nil
72	building	502811.4N 0302550.8E	245 / 72	night	nil
73	building	502807.6N 0302548.2E	261 / 87	night	nil
74	Construction crane	502807.6N 0302548.2E	271 / 97	night	nil
75	building	502826.4N 0302442.5E	236 / 63	night	nil
76	building	502803.8N 0302549.1E	264 / 91	night	nil
77	3 tube	502826.1N 0302441.7E	232 / 59	night	nil
79	building	502812.2N 0302552.6E	250 / 77	night	nil
80	Construction crane	502811.9N 0302553.8E	275 / 102	night	nil
81	building	502817.5N 0302516.9E	230 / 57	nil	nil
83	building	502811.5N 0302545.2E	235 / 62	night	nil
84	building	502759.7N 0302547.9E	263 / 89	day	nil
89	building	502807.1N 0302554.8E	244 / 71	night	nil
91	building	502808.3N 0302547.8E	263 / 90	night	nil
94	building	502806.3N 0302551.8E	267 / 93	night	nil
100	building	502803.4N 0302549.8E	268 / 95	night	nil
107	building	502742.7N 0302705.6E	266 / 92	night	nil
119	building	502751.1N 0302618.5E	271 / 98	nil	nil
129	building	502737.4N 0302652.6E	251 / 77	nil	nil
131	building	502755.8N 0302547.2E	268 / 94	night	nil
140	forest band	502838.1N 0302322.2E	193 / 19	nil	nil
148	Building	502748.3N 0302556.6E	274 / 100	night	nil
156	Building	502745.7N 0302553.6E	274 / 100	night	nil
157	Building	502744.4N 0302556.4E	269 / 96	night	nil
158	Building	502803.3N 0302501.2E	231 / 58	nil	nil
169	Building	502813.7N 0302423.0E	249 / 75	night	nil

172	Building	502812.3N 0302424.2E	246 / 72	night	nil
182	Building	502709.1N 0302649.0E	269 / 95	night	nil
184	tube	502742.3N 0302528.5E	239 / 65	night	nil
198	Building	502733.4N 0302532.5E	254 / 80	night	nil
199	Building	502731.6N 0302535.5E	252 / 79	night	nil
204	garages	502828.7N 0302333.5E	189 / 15	nil	nil
210	tube	502712.7N 0302553.8E	238 / 64	night	nil
219	garages	502825.8N 0302335.7E	188 / 15	nil	nil
220	garages	502825.3N 0302336.4E	189 / 15	nil	nil
225	Building	502727.4N 0302518.0E	264 / 90	nil	nil
228	tree	502824.7N 0302336.7E	200 / 27	nil	nil
231	Building	502730.2N 0302505.7E	273 / 100	night	nil
247	Building	502644.3N 0302532.2E	258 / 85	night	nil
250	Building	502651.5N 0302516.8E	263 / 89	night	nil
259	tube	502712.9N 0302509.7E	240 / 67	day/night	nil
265	building	502644.8N 0302539.8E	237 / 63	nil	nil
273	building	502651.6N 0302519.2E	237 / 64	nil	nil
277	building	502652.0N 0302515.7E	263 / 90	nil	nil
278	building	502621.0N 0302518.7E	254 / 80	night	nil
283	Construction crane	502723.3N 0302431.9E	255 / 81	night	nil
300	tube (earth electrode)	502650.0N 0302456.6E	244 / 70	day/night	nil
304	factory pipe	502715.2N 0302429.8E	242 / 68	night	nil
306	building	502621.9N 0302518.7E	256 / 82	night	nil
307	antenna at building	502642.5N 0302459.0E	246 / 73	nil	nil
314	building	502643.8N 0302450.0E	261 / 87	nil	nil
322	factory pipe	502713.9N 0302419.0E	254 / 81	day/night	nil
324	Construction crane	502733.7N 0302402.1E	234 / 61	night	nil
332	building	502725.8N 0302404.8E	237 / 64	night	nil
350	tube (earth electrode)	502641.3N 0302424.8E	232 / 59	nil	nil
358	trees	502818.7N 0302318.9E	186 / 13	nil	nil
371	building	502713.0N 0302354.1E	241 / 68	nil	nil
376	building	502712.5N 0302351.6E	234 / 61	nil	nil
377	Antenna	502731.4N 0302340.2E	229 / 56	day/night	nil
379	building	502713.3N 0302348.9E	235 / 61	nil	nil
383	building	502603.8N 0302355.4E	270 / 96	night	nil
385	building	502604.9N 0302351.4E	267 / 94	night	nil
387	Construction crane	502603.9N 0302351.5E	268 / 94	night	nil
390	building	502654.4N 0302347.6E	230 / 56	nil	nil
391	earth electrode	502712.6N 0302340.1E	228 / 54	nil	nil
396	The pipe of the boiler house	502735.5N 0302326.7E	241 / 67	night	nil
399	The pipe of the boiler house	502735.4N 0302326.3E	241 / 67	night	nil
402	building	502604.5N 0302355.6E	269 / 95	night	nil
404	building	502605.3N 0302352.7E	265 / 91	night	nil
406	trees	502822.2N 0302309.1E	200 / 26	nil	nil
407	factory pipe	502720.6N 0302326.5E	237 / 64	nil	nil
411	building	502603.1N 0302343.2E	247 / 74	night	nil
422	tree	502830.4N 0302304.7E	189 / 15	nil	nil
424	building	502709.2N 0302314.4E	255 / 81	night	nil
426	building	502719.9N 0302312.2E	257 / 83	night	nil
427	tree	502831.0N 0302303.9E	195 / 22	nil	nil
428	earth electrode	502734.4N 0302308.9E	245 / 71	day/night	nil
429	tree	502826.6N 0302303.9E	199 / 26	nil	nil
434	building	502724.3N 0302305.0E	267 / 94	nil	nil
435	tube	502706.5N 0302304.0E	241 / 68	day	nil
436	building	502612.2N 0302306.1E	238 / 64	nil	nil

438	building	502708.2N 0302303.0E	240 / 66	nil	nil
443	building	502708.2N 0302259.6E	244 / 70	nil	nil
448	building	502726.5N 0302247.4E	238 / 65	nil	nil
450	building	502605.5N 0302225.7E	260 / 86	night	nil
451	factory	502822.2N 0302256.6E	229 / 56	night	nil
452	building	502706.7N 0302234.7E	248 / 74	nil	nil
453	building	502615.3N 0302219.4E	259 / 85	night	nil
454	tube	502611.1N 0302213.9E	298 / 124	day/night	nil
459	building	502717.6N 0302228.7E	276 / 103	night	nil
460	building	502730.1N 0302233.2E	262 / 88	night	nil
461	building	502719.5N 0302228.1E	275 / 101	nil	nil
462	building	502709.3N 0302219.8E	262 / 85	night	nil
463	building	502708.5N 0302216.9E	263 / 89	night	nil
467	Construction crane	502746.2N 0302229.0E	262 / 88	night	nil
468	building	502745.9N 0302228.8E	239 / 65	nil	nil
474	building	502828.4N 0302250.8E	229 / 56	night	nil
475	building	502726.5N 0302158.9E	256 / 82	night	nil
477	building	502747.3N 0302215.7E	232 / 58	nil	nil
481	building	502717.6N 0302143.1E	253 / 79	night	nil
483	building	502715.2N 0302059.7E	247 / 74	night	nil
484	factory	502822.9N 0302239.0E	231 / 57	night	nil
486	building	502715.7N 0302106.4E	254 / 80	night	nil
487	building	502735.0N 0302127.4E	245 / 71	night	nil
488	building	502739.6N 0302125.9E	251 / 77	night	nil
489	Two buildings	502730.7N 0302109.5E	241 / 67	night	nil
490	building	502741.9N 0302125.7E	243 / 70	night	nil
492	building	502758.8N 0302145.1E	241 / 68	nil	nil
493	tree	502839.4N 0302254.6E	194 / 21	nil	nil
497	tube	502809.8N 0302149.6E	303 / 129	day/night	nil
500	tube of boiler house	502830.2N 0302226.2E	259 / 85	day/night	nil
501	building	502758.1N 0302053.7E	236 / 62	night	nil
507	Construction crane	502825.0N 0302117.1E	265 / 91	night	nil
509	building	502825.2N 0302116.8E	234 / 61	nil	nil
518	building	502845.2N 0302038.9E	267 / 93	night	nil
519	building	502846.7N 0302038.2E	243 / 70	night	nil
520	tube	502846.8N 0302048.0E	258 / 84	night	nil
521	tube of boiler house	502900.3N 0302027.6E	308 / 134	day/night	nil
522	building	502914.0N 0302034.6E	230 / 57	night	nil
523	building	502913.7N 0302037.3E	243 / 69	night	nil
524	Construction crane	502920.1N 0302012.9E	249 / 76	night	nil
526	Construction crane	502917.3N 0302032.4E	235 / 61	night	nil
527	building	502916.3N 0302038.2E	237 / 63	night	nil
528	building (tube)	502922.2N 0302012.2E	231 / 57	night	nil
530	building	502918.3N 0302037.4E	236 / 62	night	nil
538	tree	502853.8N 0302241.3E	192 / 19	nil	nil
540	tree	502857.0N 0302235.9E	194 / 20	nil	nil
541	tree	502859.4N 0302231.5E	196 / 22	nil	nil
544	tree	502903.6N 0302228.5E	193 / 19	nil	nil
545	tree	502903.1N 0302229.0E	189 / 15	nil	nil
551	Tree	502904.8N 0302230.4E	193 / 20	nil	nil
552	Tree	502905.5N 0302229.7E	195 / 21	nil	nil
553	building	502931.6N 0302150.5E	199 / 25	night	nil
554	Tree	502906.5N 0302228.9E	189 / 15	nil	nil
557	Windsock	502913.4N 0302219.7E	183 / 10	nil	nil
560	Building	502909.5N 0302225.6E	178 / 4	nil	nil
561	Electric pillar	502909.6N 0302226.8E	178 / 5	nil	nil
564	Electric pillar	502912.3N 0302226.7E	178 / 4	nil	nil
566	Tree	502923.7N 0302212.8E	183 / 10	nil	nil

574	Building	502913.9N 0302228.2E	176 / 2	nil	nil
576	Bush	502912.2N 0302230.3E	179 / 5	nil	nil
577	Building	502913.5N 0302229.0E	176 / 3	nil	nil
581	Structure	502941.8N 0302158.6E	188 / 15	nil	nil
584	Tree	502915.1N 0302228.4E	181 / 7	nil	nil
586	Electric pillar	502914.0N 0302229.8E	177 / 3	nil	nil
600	Tree	502915.7N 0302231.2E	178 / 4	nil	nil
601	Electric pillar	502914.6N 0302232.7E	176 / 3	nil	nil
602	Bush	502915.4N 0302231.0E	178 / 5	nil	nil
603	Electric pillar	502914.9N 0302232.7E	176 / 3	nil	nil
605	Building	502914.4N 0302233.5E	177 / 3	nil	nil
607	Tree	502924.5N 0302224.4E	179 / 6	nil	nil
615	Electric pillar	502915.1N 0302234.4E	177 / 4	nil	nil
616	Construction crane	502941.9N 0302210.0E	197 / 23	night	nil
618	Tree	502920.3N 0302230.5E	182 / 9	nil	nil
622	Construction crane	502941.5N 0302212.4E	197 / 24	night	nil
625	Construction crane	502942.6N 0302212.3E	197 / 24	night	nil
627	Trees	502920.6N 0302231.3E	184 / 10	nil	nil
628	Tree	502917.7N 0302234.0E	181 / 7	nil	nil
630	Electric pillar	502915.4N 0302236.2E	178 / 5	nil	nil
631	Tree	502916.1N 0302236.1E	185 / 11	nil	nil
632	building	502917.7N 0302234.0E	179 / 5	nil	nil
635	tree	502914.4N 0302238.9E	186 / 13	nil	nil
636	tree	502913.1N 0302240.1E	181 / 7	nil	nil
637	tree	502912.3N 0302241.0E	181 / 7	nil	nil
638	building	502915.0N 0302238.5E	179 / 6	nil	nil
641	tree	502911.7N 0302242.5E	180 / 6	nil	nil
642	Structure	502905.6N 0302247.3E	179 / 6	day	nil
643	Antenna	502905.3N 0302247.5E	185 / 12	nil	nil
644	Antenna	502905.6N 0302247.4E	189 / 15	nil	nil
645	antenna	502906.2N 0302247.7E	193 / 19	nil	nil
646	tree	502911.1N 0302244.9E	186 / 13	nil	nil
649	bush	502908.0N 0302248.6E	183 / 9	nil	nil
654	tree	502909.2N 0302251.6E	194 / 21	nil	nil
655	tree	502907.9N 0302253.1E	196 / 23	nil	nil
656	tree	502901.2N 0302256.7E	192 / 18	nil	nil
659	tree	502904.7N 0302256.9E	195 / 21	nil	nil
660	tree	502858.1N 0302301.6E	195 / 21	nil	nil

In Area 3

Obstacle designations	Obstacle type	Obstacle position	Elevation / height	Markings / type, color	Remarks
664	tree	502819.6N 0302335.0E	189.2 / 15.6	nil	nil
667	tree	502804.1N 0302328.3E	182.0 / 8.4	nil	nil
668	building	502803.0N 0302328.4E	186.0 / 12.4	nil	nil
669	building (roof)	502802.2N 0302327.9E	184.6 / 11.0	nil	nil
670	building	502802.6N 0302327.4E	181.8 / 8.2	nil	nil
671	Metal building	502802.7N 0302327.3E	182.0 / 8.4	nil	nil
672	searchlight	502804.9N 0302325.9E	190.5 / 16.9	nil	nil
673	building	502802.3N 0302327.3E	181.9 / 8.3	nil	nil
674	metal construction	502803.3N 0302326.7E	180.3 / 6.7	nil	nil
675	construction	502803.5N 0302326.5E	179.5 / 5.9	nil	nil
676	observation tower	502805.7N 0302324.9E	187.6 / 14.0	nil	nil
677	tree	502802.0N 0302327.0E	186.6 / 13.0	nil	nil
678	tree	502801.9N 0302326.8E	186.8 / 13.2	nil	nil
679	Rechargeable curbstone	502804.7N 0302325.0E	179.7 / 6.1	nil	nil
680	Rechargeable curbstone	502805.5N 0302324.3E	178.9 / 5.3	nil	nil
681	gate	502814.6N 0302318.6E	178.6 / 5.0	nil	nil
682	Rechargeable curbstone	502807.6N 0302322.0E	178.3 / 4.7	nil	nil
683	Rechargeable curbstone	502807.4N 0302322.1E	178.4 / 4.8	nil	nil

684	fance	502815.3N 0302317.8E	178.6 / 5.0	nil	nil
685	gate	502814.4N 0302318.1E	178.7 / 5.1	nil	nil
686	fance	502815.1N 0302317.4E	178.7 / 5.1	nil	nil
687	searchlight	502815.1N 0302317.0E	178.4 / 4.8	nil	nil
688	tree	502800.3N 0302324.3E	208.4 / 34.8	nil	nil
689	fance	502816.3N 0302316.1E	178.7 / 5.1	nil	nil
690	searchlight	502812.0N 0302318.0E	189.9 / 16.3	nil	nil
691	tree	502802.6N 0302322.5E	194.2 / 20.6	nil	nil
692	The wagon	502802.9N 0302322.3E	181.1 / 7.5	nil	nil
693	searchlight	502802.1N 0302322.5E	190.7 / 17.1	nil	nil
694	tree	502803.5N 0302321.6E	195.3 / 21.7	nil	nil
695	The wagon	502803.8N 0302321.3E	180.7 / 7.1	nil	nil
696	Rechargeable curbstone	502811.9N 0302317.2E	179.2 / 5.6	nil	nil
697	tree	502804.1N 0302320.8E	192.0 / 18.4	nil	nil
698	the wagon	502804.5N 0302320.6E	180.4 / 6.8	nil	nil
699	searchlight	502803.7N 0302320.8E	190.3 / 16.7	nil	nil
700	tree	502804.9N 0302320.0E	197.4 / 23.8	nil	nil
701	the wagon	502805.2N 0302319.7E	180.1 / 6.5	nil	nil
702	construction	502811.4N 0302317.0E	178.9 / 5.3	nil	nil
703	the wagon	502805.4N 0302319.6E	180.1 / 6.5	nil	nil
704	the angle of the house	502815.1N 0302315.3E	180.3 / 6.7	nil	nil
705	lantren on the building	502805.8N 0302319.1E	180.9 / 7.3	nil	nil
706	tree	502815.6N 0302314.5E	185.2 / 11.6	nil	nil
707	house	502814.9N 0302314.8E	180.3 / 6.7	nil	nil
708	searchlight	502805.8N 0302318.4E	189.7 / 16.1	nil	nil
709	tree	502814.6N 0302314.0E	182.7 / 9.1	nil	nil
710	Rechargeable curbstone	502807.7N 0302316.5E	179.0 / 5.4	nil	nil
711	the angle of the house	502814.5N 0302313.8E	180.5 / 6.9	nil	nil
712	searchlight	502807.5N 0302316.2E	189.7 / 16.1	nil	nil
713	Rechargeable curbstone	502809.4N 0302315.1E	178.5 / 4.9	nil	nil
714	the angle of the house	502814.3N 0302313.3E	180.7 / 7.1	nil	nil
715	fance	502808.0N 0302315.4E	180.1 / 6.5	nil	nil
716	tree	502807.9N 0302315.0E	187.9 / 14.3	nil	nil
717	Rechargeable curbstone	502810.5N 0302314.0E	179.2 / 5.6	nil	nil
718	searchlight	502809.2N 0302314.3E	189.9 / 16.3	nil	nil
719	extract	502808.2N 0302314.5E	182.5 / 8.9	nil	nil
720	tree	502807.3N 0302314.7E	193.2 / 19.6	nil	nil
721	fance	502809.7N 0302313.7E	179.8 / 6.2	nil	nil
722	Rechargeable curbstone	502811.2N 0302313.2E	179.2 / 5.6	nil	nil
723	tree	502810.1N 0302313.4E	189.8 / 16.2	nil	nil
724	extract	502809.1N 0302313.5E	182.5 / 8.9	nil	nil
725	tree	502810.7N 0302312.7E	185.7 / 12.1	nil	nil
726	fance	502811.6N 0302311.8E	179.8 / 6.2	nil	nil
727	Lantern on the building	502810.0N 0302312.1E	188.0 / 14.4	nil	nil
728	Well	502810.4N 0302311.7E	186.2 / 12.6	nil	nil
729	fance	502813.0N 0302310.7E	179.9 / 6.3	nil	nil
730	Well	502810.2N 0302311.2E	189.9 / 16.3	nil	nil
731	house	502810.5N 0302310.9E	182.7 / 9.1	nil	nil
732	tree	502810.7N 0302310.4E	204.4 / 30.8	nil	nil
733	the angle of the house	502812.0N 0302310.0E	189.0 / 15.4	nil	nil
734	the angle of the house	502812.3N 0302309.6E	191.6 / 18.0	nil	nil

UKKT AD 2.11 Meteorological information provided / Метеорологічна інформація, що надається

1	Associated MET Office	KYIV/Antonov-1
2	Hours of service, MET Office outside hours	MON - FRI 05:30-13:45 (04:30-12:45) except HOL, SAT, SUN
3	Office responsible for TAF preparation, Periods of validity	KYIV/Antonov-2 / 9HR
4	Type of landing forecast, Interval of issuance	TREND/ 30 MIN
5	Briefing/consultation provided	P
6	Flight documentation, Language(s) used	C, PL, TB / Ukrainian, English
7	Charts and other informations available for briefing or consultation	S, U85, U70, U50, U30, U20, P 40, SWH, SWM
8	Supplementary equipment available for providing information	nil
9	ATS unit provided with information	KYIV/Antonov-1 TWR
10	Additional information (limitation of service, etc.)	+380 44 400 77 44

UKKT AD 2.12 Runway physical characteristics / Фізичні характеристики RWY

Designations RWY NR	True BRG	Dimensions of RWY	Strength (PCN) and surface of RWY and SWY	THR coordinates RWY end coordinates THR geoid undulation	THR elevation and highest elevation of TDZ of precision APP RWY		
1	2	3	4	5	6		
14	144.79°	1806x35	19/R/B/X/T Concrete	502907.42N 0302236.86E - 26 M	THR 174 M nil		
32	324.79°	1806x35	19/R/B/X/T Concrete	502819.68N 0302329.61E - 26 M	THR 177 M nil		
Slope of RWY-SWY	SWY dimensions	CWY dimensions	Strip dimensions	RESA dimensions	Arresting system	OFZ	Remarks
7	8	9	10	11	12	13	14
+0,63%/-0,71%/+0,79% +0,28%/-0,25%, 300m/ 500m/ 597,45m 200m/ 208,57m	nil	nil	1956x300	nil	nil	nil	nil
+0,25%/-0,28%/-0,79% +0,71%/-0,63%, 208,57m/ 200m 597,45m/ 500m/ 300m	nil	150x150	1956x300	nil	nil	nil	nil

UKKT AD 2.13 Declared distances / Оголошені дистанції

RWY Designator	Take-OFF RUN Available	Take-OFF Distance Available	Accelerate-STOP Distance Available	Landing Distance Available	Remarks
1	2	3	4	5	6
14	-	-	-	1806	Take-off MC 138° prohibited
32	1776	1926	1776	-	Landing MC 318° prohibited

UKKT AD 2.14 Approach and runway lighting / Вогні наближення та вогні RWY

RWY Designator	APCH LGT type LEN INTST	THR LGT colour WBAR	VASIS (MEHT) PAPI	TDZ LGT LEN	RWY Centre Line LGT Length, spacing, colour, INTST	RWY edge LGT LEN, spacing colour INTST	RWY End LGT colour WBAR	SWY LGT LEN (M) colour	Remarks
1	2	3	4	5	6	7	8	9	10
14	nil	nil	nil	nil	nil	nil	nil	nil	nil
32	nil	nil	nil	nil	nil	nil	nil	nil	nil

UKKT AD 2.15 Other lighting and secondary power supply / Інші вогні, резервне джерело електроживлення

1	ABN/IBN location, characteristics and hours of operation	nil / nil
2	LDI location and LGT Anemometer location and LGT	nil nil
3	TWY edge and centre line lighting	Centre line: nil Edge: nil
4	Secondary power supply/switch over time	AVBL. Switch-over time 60 seconds
5	Remarks	nil

UKKT AD 2.16 Helicopter landing area / Зона посадки вертольотів

1	Coordinates TLOF or THR FATO, geoid undulation	nil
2	TLOF and/or FATO elevation M	nil
3	TLOF and FATO area dimension, surface, strength, marking	nil
4	True BRG of FATO	nil
5	Declared distance available	nil
6	APP and FATO lighting	nil
7	Remarks	RWY is used

UKKT AD 2.17 Air traffic services airspace / Повітряний простір ATS

Designation and lateral limits	Vertical Limits	Airspace classification	ATS unit call sign/Language(s)	Transition altitude	Hours of applicability	Remarks
1	2	3	4	5	6	7
CTR Kyiv/Antonov-1 502730N 0301800E - 503800N 0301300E - 504600N 0300400E - 504508N 0301006E - 503954N 0301759E - 502931N 0302926E - 502655N 0302331E - 502646N 0302028E - 502730N 0301800E	900 M SFC	D	Kyiv/Antonov-1 Tower Rus	3050 M	MON - FRI 07:30 - 15:00 (06:30 - 14:00) except HOL	nil

UKKT AD 2.18 Air traffic services communication facilities / Засоби зв'язку ATS

Service designation	Call sign	Frequency	Hours of operation	Remarks
1	2	3	4	5
TWR	Kyiv/Antonov-1 Tower	127.125 MHZ	MON-FRI 07:30-15:00 (06:30-14:00) EXC HOL	nil
TWR	Kyiv/Antonov-1 Tower	128.200 MHZ	MON-FRI 07:30-15:00 (06:30-14:00) EXC HOL	Reserved

UKKT AD 2.19 Radio navigation and landing aids / Радіонавігаційні засоби та засоби посадки

Type of aid and VAR (For VOR/ILS/MLS, give station declination)	ID	Frequency	Hours of operation	Site of transmitting antenna coordinates	Elevation of DME transmitting antenna	Remarks
1	2	3	4	5	6	7
NDB	W	376.00 KHZ	HS	502942.0N 0302159.0E	205.0M	

UKKT AD 2.20 Local aerodrome regulations / Місцеві правила аеродрому

Taxiing/towing of An-124 on/from RW/TXW is carried by follow me car or by local instructions.

Експлуатація АСФТ АН-124 на аеродромі виконується згідно з "Процедури прийому, випуску та буксирування АСФТ АН-124 на аеродромі Київ/ Антонов-1" від 09.11.2017 р

UKKT AD 2.21 Noise abatement procedures / Процедури зниження шуму

Noise Abatement Procedures are following:

– ACFT crews use mode of flight providing noise abatement according to Flight Operation Manual and ICAO recommendations;

Зниження шуму досягається:

- застосуванням екіпажами АСФТ режимів польоту, що забезпечують зменшення шуму згідно з Керівництвом по льотній експлуатації і рекомендаціям ICAO;
- строгою витримкою екіпажами схем входу/виходу;
- використанням для зльоту RWY 32 і для посадки RWY 14.

- strict adherence to entry/exit patterns by crews;
- use of RWY 32 for take-off and RWY 14 for landing.

UKKT AD 2.22 Flight procedures / Правила польотів

1. See SID, STAR and IAC charts
2. Direct routing between aerodromes of TMA Kyiv for IFR flights.

1. Див. схеми SID, STAR і IAC

2.1. Flight planning.

The field 18 of FPL should consist of DCT segments, which are defined within the Route Availability Document (RAD) "Appendix 5 - Airport connectivity" www.nm.eurocontrol.int/RAD/index.html, otherwise FPL will be rejected.

2. Польоти по IFR по найкоротших маршрутах між аеродромами ТМА Київ.

2.1. Планування польотів.

Маршрутна частина FPL повинна складатися з ділянок DCT, які опубліковані в Додатку 5 "Сполучення між аеропортами" до Документу доступності маршрутів (RAD) www.nm.eurocontrol.int/RAD/index.html, в іншому випадку FPL буде відхилений.

2.2. Air traffic services.

2.2.1 ATC departure clearance will include flight conditions.

2.2. Обслуговування повітряного руху.

2.2.1 Диспетчерський дозвіл на виліт буде включати умови виконання польоту.

2.2.2 Before departure from TMA Kyiv aerodromes to Kyiv/Antonov-1 aerodrome, ACFT crew should receive aeronautical data and meteorological information from TWR Kyiv/Antonov-1 directly or from ATC unit at departure aerodrome.

2.2.2 Перед вильотом з аеродромів ТМА Київ на аеродром Київ/Антонов-1, екіпаж АСФТ повинен отримати інформацію про аеронавігаційні дані та метеоумови на аеродромі Київ/Антонов-1 від диспетчера TWR Київ/Антонов-1 або диспетчера аеродрому вильоту.

2.2.3 After take-off expect radar vectoring to pilot-interpreted final approach aids.

2.2.3 Після зльоту очікуйте радіолокаційне наведення на засіб заключного сегмента заходження на посадку, показники якого інтерпретуються екіпажем АСФТ.

2.2.4 In case of radio communication failure ACFT crew should:

- switch to transponder code A 7600 immediately;
- proceed to IAF VETEP at altitude 1200m or at the last assigned altitude (FL) if it is higher than 1200m, hold over VETEP for 5 min, then execute instrument approach procedure for RWY14.

2.2.4 У разі відмови радіозв'язку екіпаж АСФТ зобов'язаний:

- негайно переключитись на код відповідача А 7600;
- слідувати на IAF VETEP на абсолютній висоті 1200m або на останньому заданому рівні, якщо він вище 1200m, очікувати над VETEP протягом 5 min, потім виконати заходження на посадку на RWY14.

2.2.5. All transit traffic which fly through CTR Kyiv/Antonov-1 must contact Antonov Tower on frequency 120,55 MHz. Clearance to enter CTR Kyiv/Antonov-1 and ATS is provided by ATS unit Kyiv/Antonov-2 (Antonov Tower).

2.2.5. Всі АСФТ, що прямують через CTR Kyiv/Antonov-1 повинні встановити зв'язок з Antonov Tower на частоті 120,55 MHz. Дозвіл на вхід до CTR Kyiv/Antonov-1 та управління у ньому здійснюється органом ATS аеродрому Kyiv/Antonov-2 (Antonov Tower).

UKKT AD 2.23 Additional information / Додаткова інформація

Nil

Nil

UKKT AD 2.24 Charts related to an aerodrome / Карти, які відносяться до аеродрому

Name	Page	Date
AERODROME CHART-ICAO	UKKT AD 2.24.1-1	23 APR 2020
AERODROME OBSTACLE CHART-ICAO - TYPE A	UKKT AD 2.24.4-1	23 MAY 2019
TMA KYIV - AREA CHART-ICAO	UKKT AD 2.24.6-1	24 MAR 2022
STANDARD DEPARTURE CHART INSTRUMENT (SID)-ICAO RWY 32	UKKT AD 2.24.8-1	27 JAN 2022
STANDARD ARRIVAL CHART INSTRUMENT (STAR)-ICAO RWY 14	UKKT AD 2.24.10-1	27 JAN 2022
INSTRUMENT APPROACH CHART (IAC)-ICAO NDB RWY14	UKKT AD 2.24.12-1	27 JAN 2022

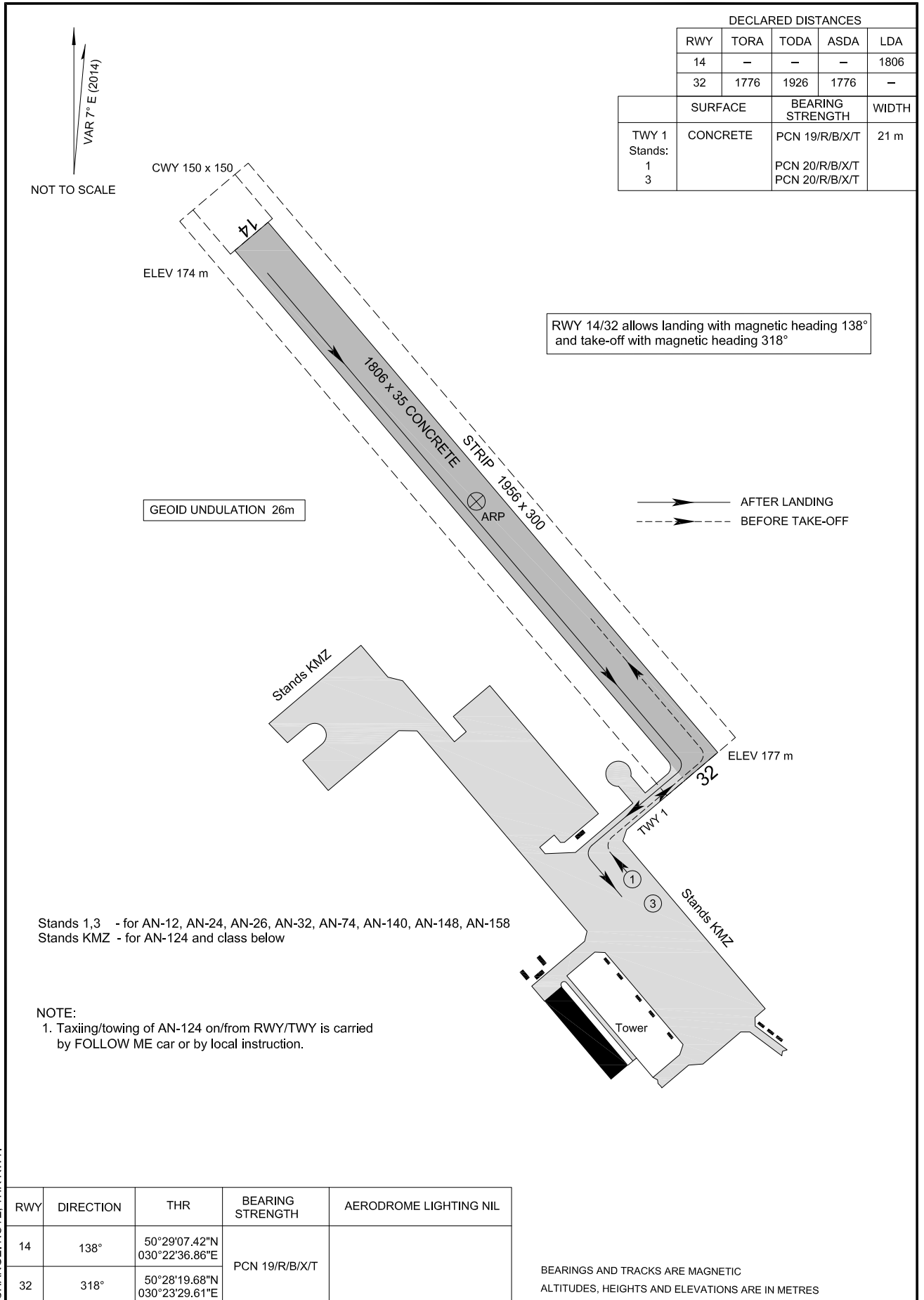
AERODROME CHART - ICAO

ARP:
50°28'44"N
030°23'03"E

ELEV 177 M

TWR 127.125

KYIV/Antonov-1



CHANGE: NOTE: THR RWY.

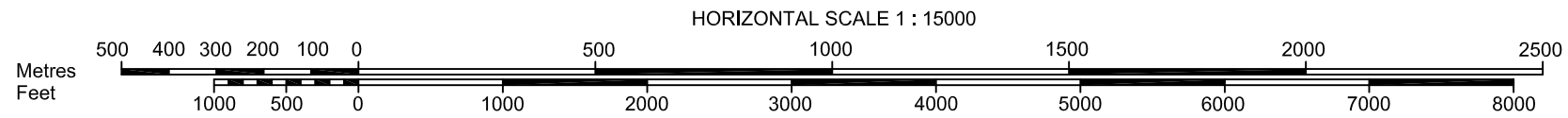
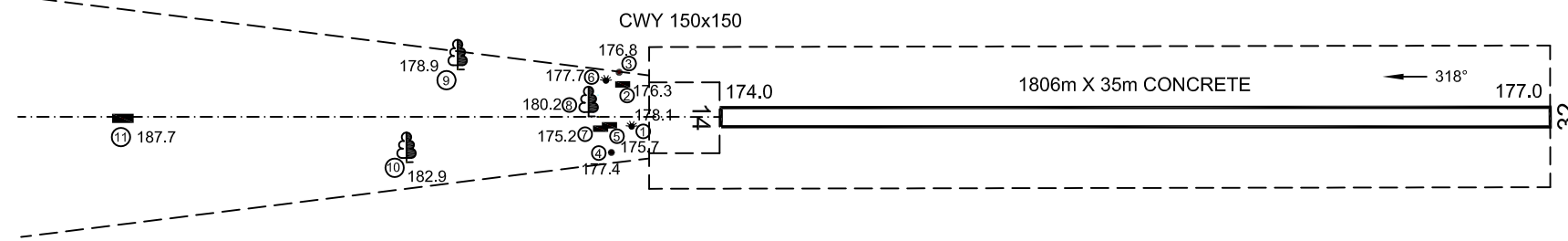
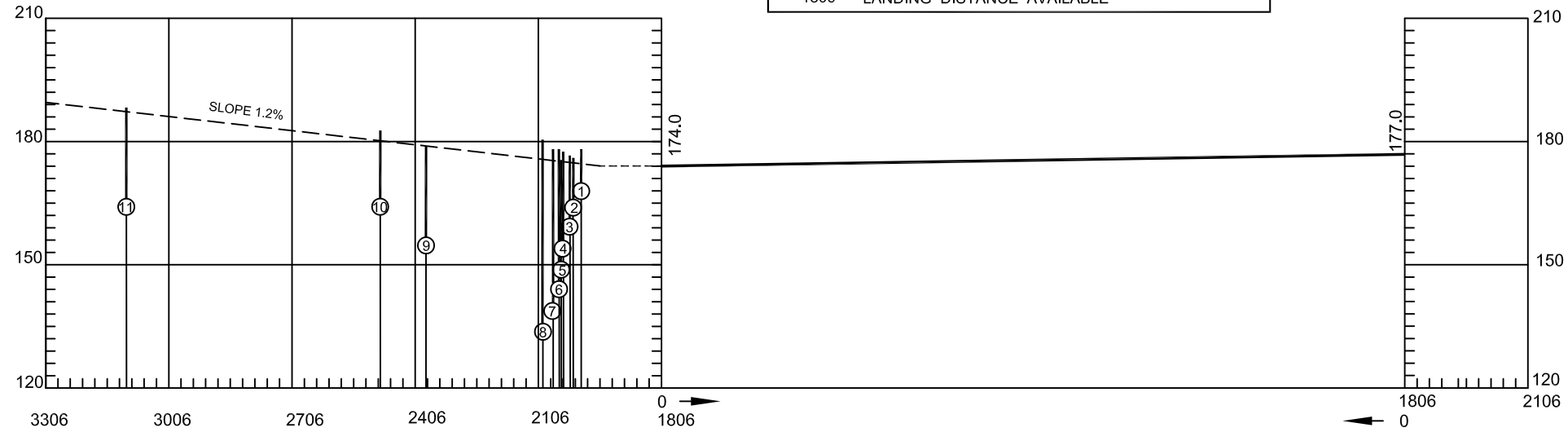
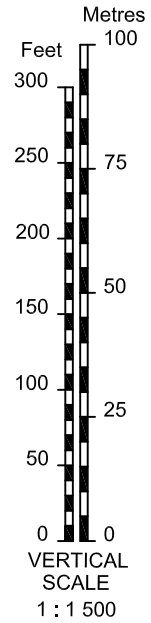
AERODROME OBSTACLE CHART - ICAO
TYPE A (OPERATING LIMITATIONS)

DIMENSIONS AND ELEVATIONS IN METRES

KYIV/Antonov-1

MAGNETIC VARIATION 7° E (2014)

DECLARED DISTANCES	
RWY 14	RWY 32
- TAKE-OFF RUN AVAILABLE	1776
- TAKE-OFF DISTANCE AVAILABLE	1926
- ACCELERATE STOP DISTANCE AVAILABLE	1776
1806 LANDING DISTANCE AVAILABLE	-



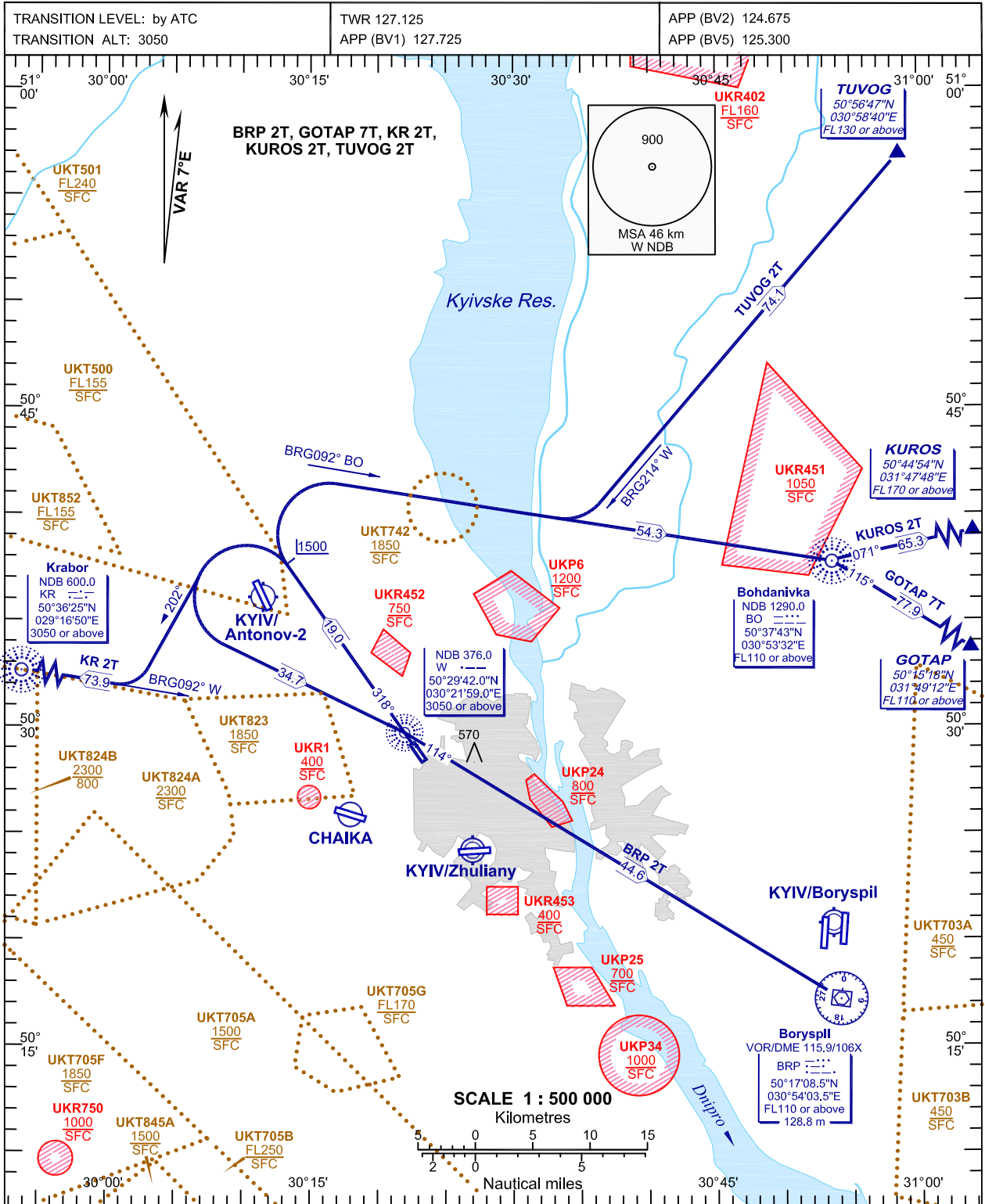
LEGEND	
IDENTIFICATION NUMBER	①
TREES	🌳
BUILDING	■
TRANSMISSION LINE	●
BUSH	✳

AMENDMENT RECORD		
N	DATE	ENTERED BY

CHANGE: New chart.

STANDARD DEPARTURE CHART
INSTRUMENT (SID)-ICAO

KYIV/Antonov-1
RWY 32



NOTE:

1. Statistical data of ACFT performance are used for determination of the average flight path of the SID procedures.
2. Minimum climb gradient for BRP 2T, GOTAP 7T, KUROS 2T, TUVOG 2T 5% up to 3050 m.
3. If unable to comply SID procedures advise ATC.

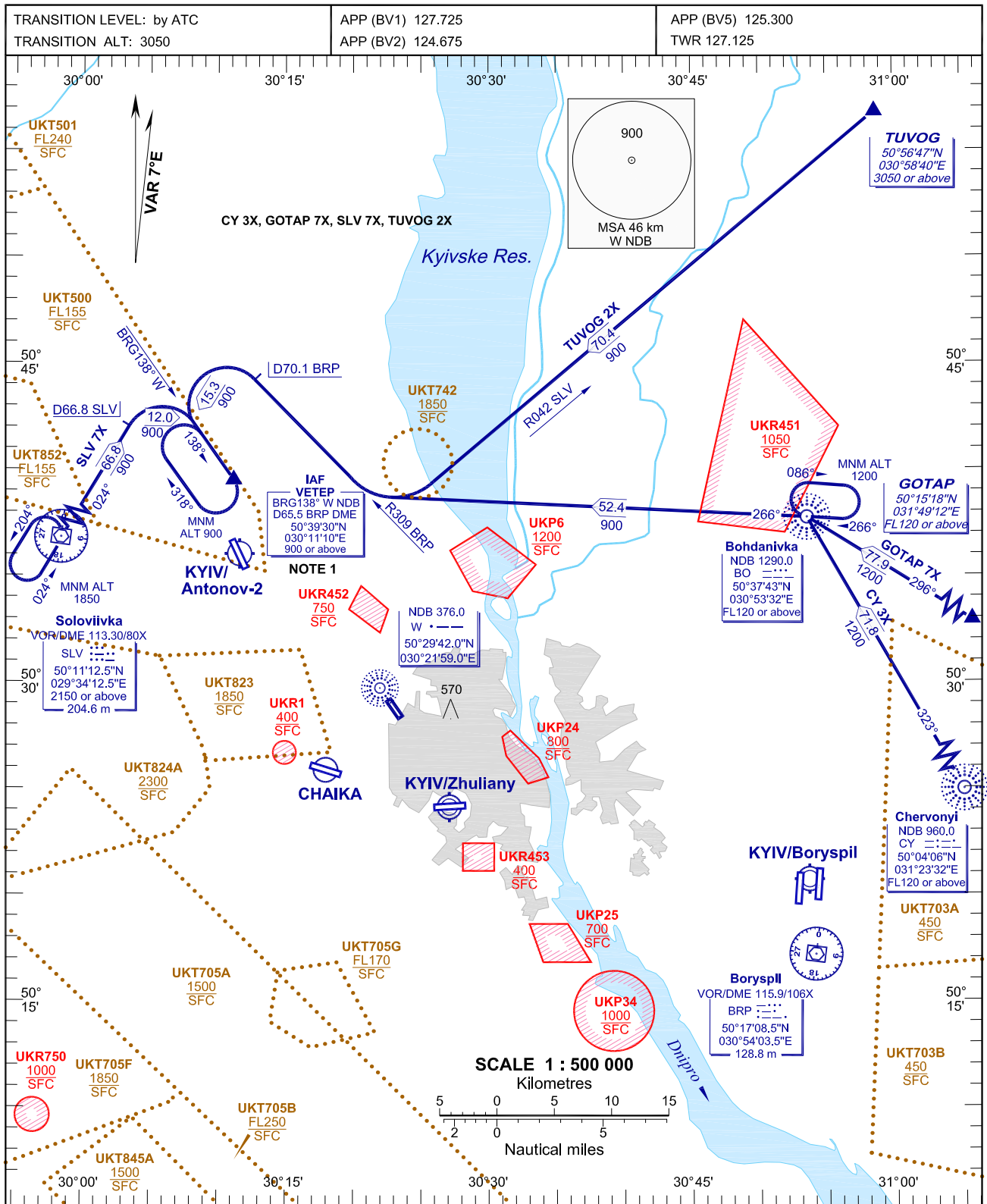
BEARINGS AND TRACKS ARE MAGNETIC
ALTITUDES, HEIGHTS AND ELEVATIONS ARE IN METRES
DISTANCES ARE IN KILOMETRES

SID RWY 32

Designator	Route	Altitude	Remarks
BRP 2T Boryspil TWO TANGO	On track 318° climb to 1500, turn LEFT to W NDB, then on track 114° from W NDB to BRP VOR/DME	Cross W NDB at 3050 or above, BRP VOR/DME at FL110 or above	Minimum climb gradient 5% up to 3050m
GOTAP 7T GOTAP SEVEN TANGO	On track 318° climb to 1500, turn RIGHT to intercept BRG092° BO NDB, then turn RIGHT on track 115° from BO NDB to GOTAP	Cross BO NDB at FL110 or above, GOTAP at FL110 or above	Minimum climb gradient 5% up to 3050m
KR 2T Krabor TWO TANGO	On track 318° climb to 1500, turn LEFT on track 202°, then turn RIGHT to intercept BRG092° W NDB to KR NDB	Cross KR NDB at 3050 or above	nil
KUROS 2T KUROS TWO TANGO	On track 318° climb to 1500, turn RIGHT to intercept BRG092° BO NDB, then turn LEFT on track 071° from BO NDB to KUROS	Cross BO NDB at FL110 or above, KUROS at FL170 or above	Minimum climb gradient 5% up to 3050m
TUVOG 2T TUVOG TWO TANGO	On track 318° climb to 1500, turn RIGHT to intercept BRG092° BO NDB, then turn LEFT to intercept BRG214° W NDB to TUVOG	Cross TUVOG at FL130 or above	Minimum climb gradient 5% up to 3050m

STANDARD ARRIVAL CHART
INSTRUMENT (STAR)-ICAO

KYIV/Antonov-1
RWY 14



NOTE:
 1. Speed restriction: MAX IAS 407 km/h (220 kt) at IAF VETEP.
 2. Speed restriction: 56 km (30 nm) from ARP KYIV/Antonov-1 MAX IAS 465 km/h (250 kt) at or BLW FL100 (3050 m).
 3. Descend: Actual descend clearances will be as directed by ATC.

BEARINGS AND TRACKS ARE MAGNETIC
 ALTITUDES, HEIGHTS AND ELEVATIONS ARE IN METRES
 DISTANCES ARE IN KILOMETRES

CHANGE: New procedures; NOTE 1.

STAR RWY 14

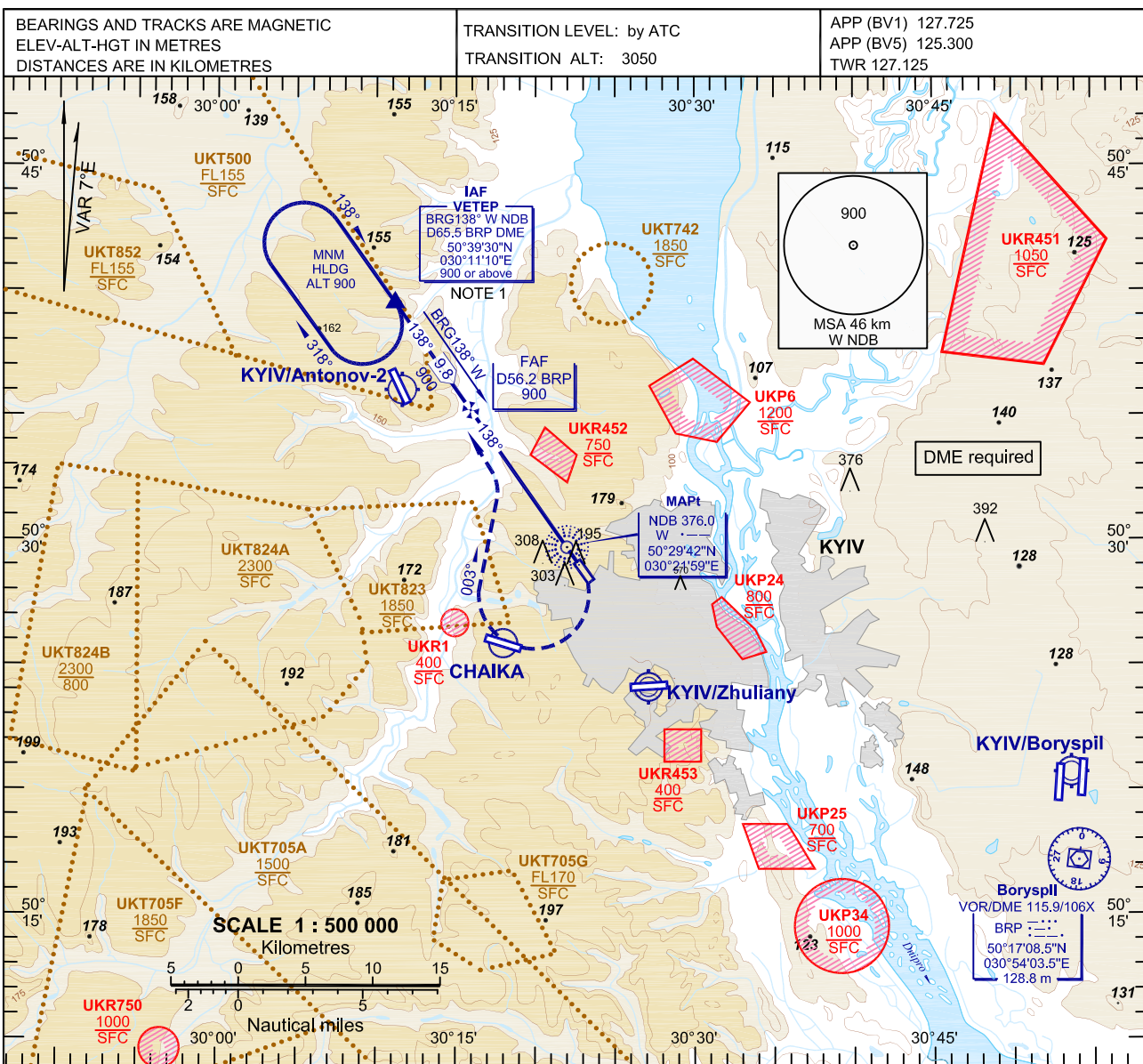
Designator	Route	Altitude	Remarks
CY 3X Chervonyi THREE X-RAY	On track 323° from CY NDB to BO NDB, turn LEFT on track 266° from BO NDB, turn RIGHT to intercept R309° BRP VOR to D70.1 BRP DME, turn LEFT to intercept BRG138° W NDB to IAF VETEP, then according to approach chart	Cross CY NDB at FL120 or above, BO NDB at FL120 or above, IAF VETEP at 900 or above	MAX IAS 407 km/h (220 kt) at IAF VETEP
GOTAP 7X GOTAP SEVEN X-RAY	On track 296° to BO NDB, turn LEFT on track 266° from BO NDB, turn RIGHT to intercept R309° BRP VOR to D70.1 BRP DME, turn LEFT to intercept BRG138° W NDB, to IAF VETEP, then according to approach chart	Cross GOTAP at FL120 or above, BO NDB at FL120 or above, IAF VETEP at 900 or above	MAX IAS 407 km/h (220 kt) at IAF VETEP
TUVOG 2X TUVOG TWO X-RAY	On R042° SVL VOR, turn RIGHT to intercept R309° BRP VOR to D70.1 BRP DME, turn LEFT to intercept BRG138° W NDB to IAF VETEP, then according to approach chart	Cross TUVOG at 3050 or above, IAF VETEP at 900 or above	MAX IAS 407 km/h (220 kt) at IAF VETEP
SLV 7X Soloviivka SEVEN X-RAY	On track 024° from SLV VOR/DME, to D66.8 SLV DME, turn RIGHT to intercept BRG138° W NDB to IAF VETEP, then according to approach chart	Cross SLV VOR/DME at 2150 or above, IAF VETEP at 900 or above	MAX IAS 407 km/h (220 kt) at IAF VETEP

**INSTRUMENT
APPROACH CHART (IAC)-ICAO**

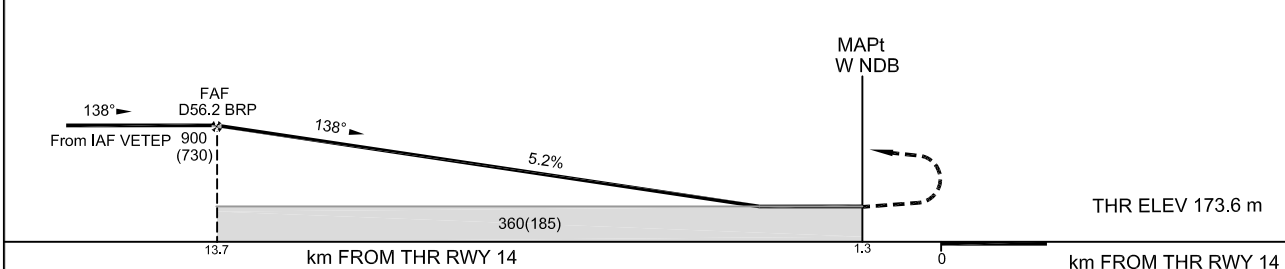
AD ELEV 177 m

HEIGHTS RELATED TO
THR RWY 14 - ELEV 173.6 m

**KYIV/Antonov-1
NDB RWY 14**



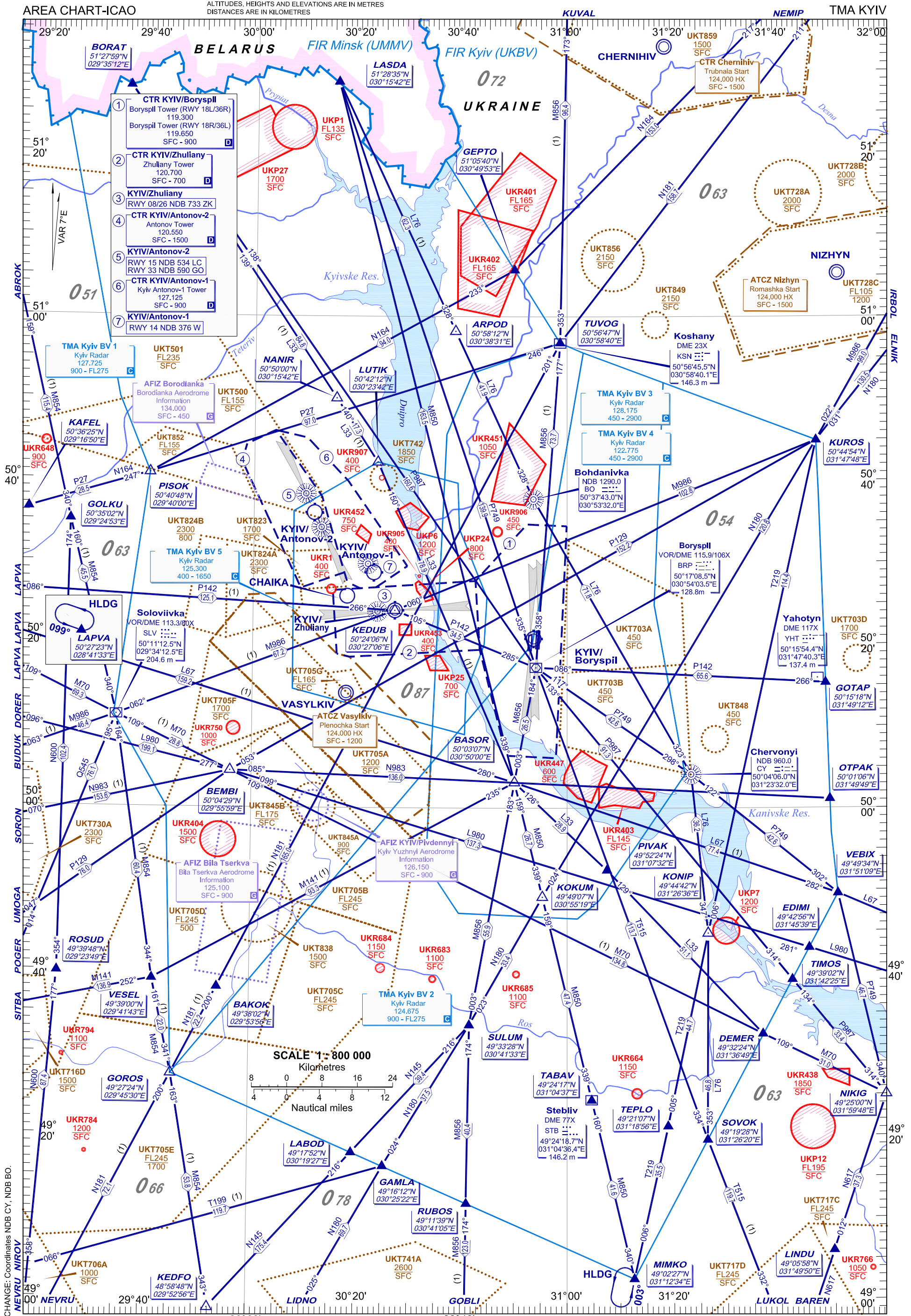
MISSED APPROACH:
At MAPt turn RIGHT on track 003°, turn LEFT to Intercept BRG138° W NDB
climbing 900(730) to IAF VETEP, then according to chart.



OCA/H	A	B	C	D	NOTE:						
Straight-in Approach	W NDB	360(185)	360(185)	360(185)	360(185)	1. Speed restriction: MAX IAS 407 km/h (220 kt) at IAF VETEP. 2. Timing not authorized for defining the MAPt.					
Circling		NOT AUTHORIZED									
GROUND SPEED	km/h	150	180	210	240	270	300	330	360		
FAF - MAPt 12400 m	min:s	4:58	4:08	3:33	3:06	2:45	2:29	2:15	2:04		
RATE OF DESCENT	m/s	2.2	2.6	3.0	3.5	3.9	4.3	4.8	5.2		

BEARINGS AND TRACKS ARE MAGNETIC
ALTITUDES, HEIGHTS AND ELEVATIONS ARE IN METRES
DISTANCES ARE IN KILOMETRES

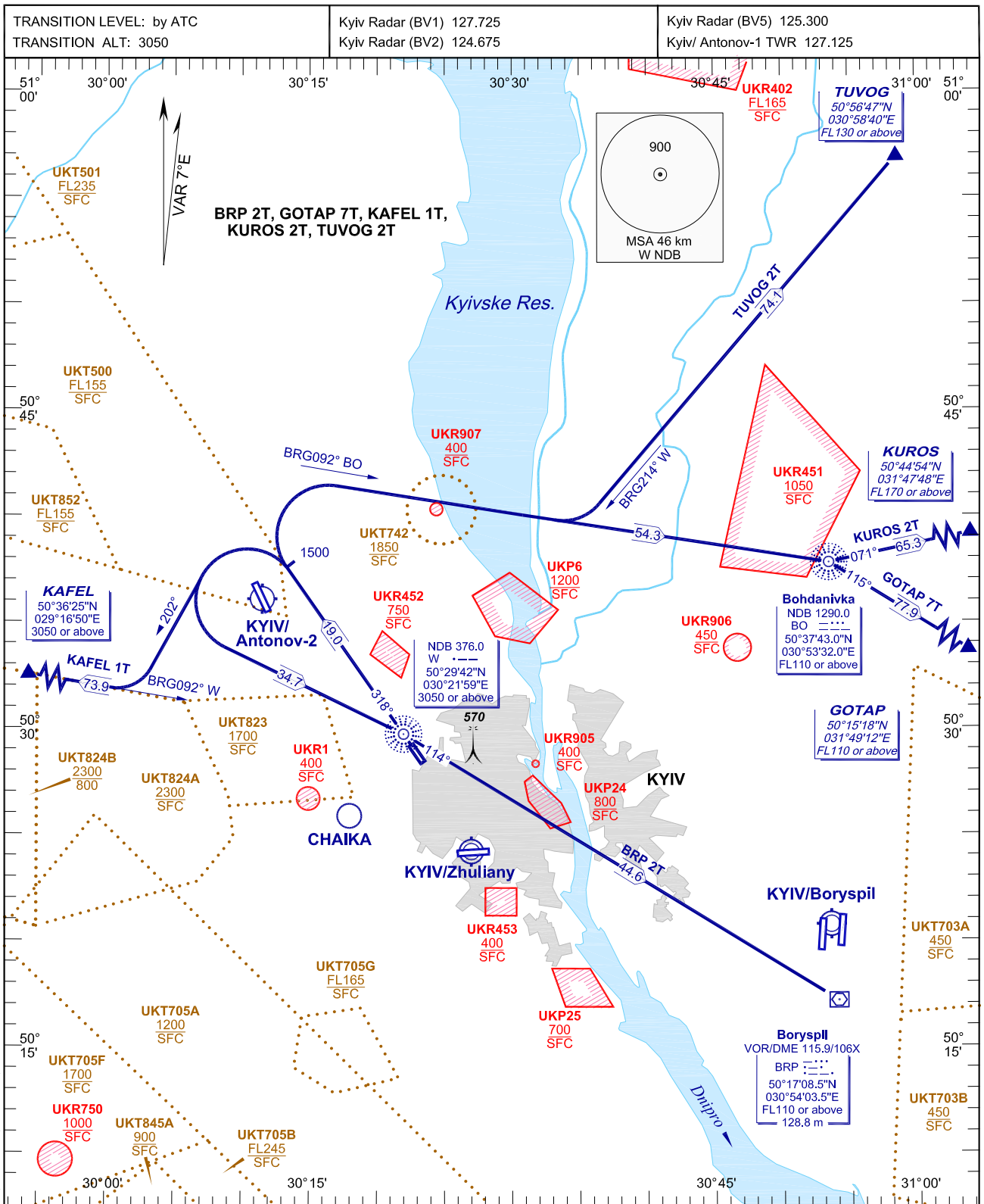
AREA CHART-ICAO



CHANGE: Coordinates NDB CY, NDB BC.

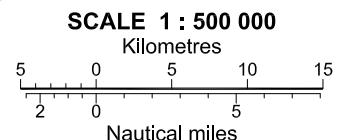
STANDARD DEPARTURE CHART
INSTRUMENT (SID)-ICAO

KYIV/Antonov-1
RWY 32



- NOTE:
1. Statistical data of ACFT performance are used for determination of the average flight path of the SID procedures.
 2. Minimum climb gradient for BRP 2T, GOTAP 7T, KUROS 2T, TUVOG 2T 5% up to 3050 m.
 3. If unable to comply SID procedures advise ATC.

BEARINGS AND TRACKS ARE MAGNETIC
ALTITUDES, HEIGHTS AND ELEVATIONS ARE IN METRES
DISTANCES ARE IN KILOMETRES



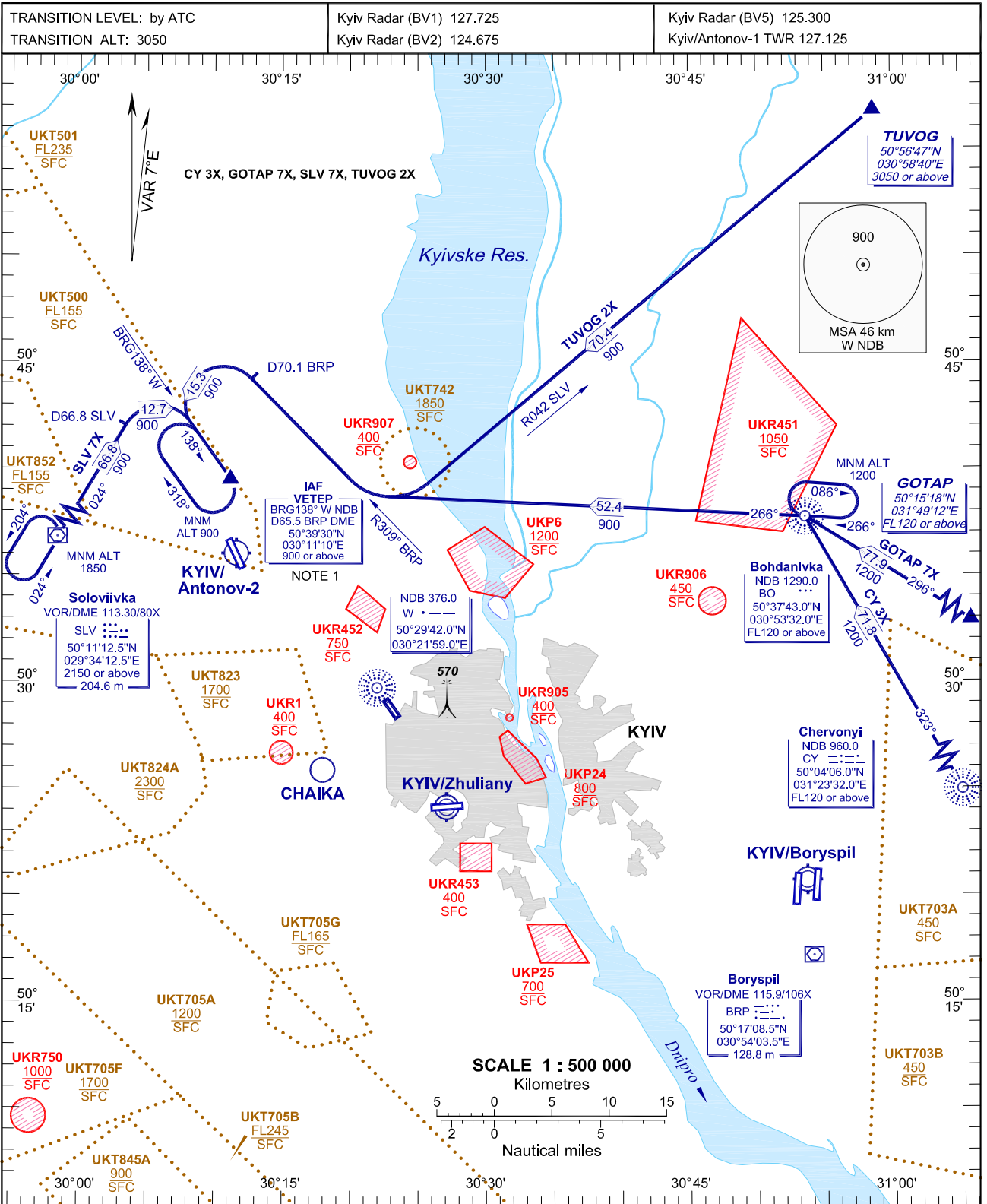
CHANGE: Lateral limits UKT705A, UKT705F, rename CHAIKA.

SID RWY 32

Designator	Route	Altitude	Remarks
BRP 2T Boryspil TWO TANGO	On track 318° climb to 1500, turn LEFT to W NDB, then on track 114° from W NDB to BRP VOR/DME	Cross W NDB at 3050 or above, BRP VOR/DME at FL110 or above	Minimum climb gradient 5% up to 3050m
GOTAP 7T GOTAP SEVEN TANGO	On track 318° climb to 1500, turn RIGHT to intercept BRG092° BO NDB, then turn RIGHT on track 115° from BO NDB to GOTAP	Cross BO NDB at FL110 or above, GOTAP at FL110 or above	Minimum climb gradient 5% up to 3050m
KAFEL 1T KAFEL ONE TANGO	On track 318° climb to 1500, turn LEFT on track 202°, then turn RIGHT to intercept BRG092° W NDB to KAFEL	Cross KAFEL at 3050 or above	nil
KUROS 2T KUROS TWO TANGO	On track 318° climb to 1500, turn RIGHT to intercept BRG092° BO NDB, then turn LEFT on track 071° from BO NDB to KUROS	Cross BO NDB at FL110 or above, KUROS at FL170 or above	Minimum climb gradient 5% up to 3050m
TUVOG 2T TUVOG TWO TANGO	On track 318° climb to 1500, turn RIGHT to intercept BRG092° BO NDB, then turn LEFT to intercept BRG214° W NDB to TUVOG	Cross TUVOG at FL130 or above	Minimum climb gradient 5% up to 3050m

STANDARD ARRIVAL CHART
INSTRUMENT (STAR)-ICAO

KYIV/Antonov-1
RWY 14



CHANGE: Lateral limits UKT705A, UKT705B, UKT705F; rename CHAIKA; NOTE 3.

NOTE:

1. Speed restriction: MAX IAS 407 km/h (220 kt) at IAF VETEP.
2. Speed restriction: 56 km (30 nm) from ARP KYIV/Antonov-1 MAX IAS 465 km/h (250 kt) at or BLW FL100 (3050 m).
3. Expect descent clearance by ATC.

BEARINGS AND TRACKS ARE MAGNETIC
ALTITUDES, HEIGHTS AND ELEVATIONS ARE IN METRES
DISTANCES ARE IN KILOMETRES

STAR RWY 14

Designator	Route	Altitude	Remarks
CY 3X Chervonyi THREE X-RAY	On track 323° from CY NDB to BO NDB, turn LEFT on track 266° from BO NDB, turn RIGHT to intercept R309° BRP VOR to D70.1 BRP DME, turn LEFT to intercept BRG138° W NDB to IAF VETEP, then according to approach chart	Cross CY NDB at FL120 or above, BO NDB at FL120 or above, IAF VETEP at 900 or above	MAX IAS 407 km/h (220 kt) at IAF VETEP
GOTAP 7X GOTAP SEVEN X-RAY	On track 296° to BO NDB, turn LEFT on track 266° from BO NDB, turn RIGHT to intercept R309° BRP VOR to D70.1 BRP DME, turn LEFT to intercept BRG138° W NDB, to IAF VETEP, then according to approach chart	Cross GOTAP at FL120 or above, BO NDB at FL120 or above, IAF VETEP at 900 or above	MAX IAS 407 km/h (220 kt) at IAF VETEP
TUVOG 2X TUVOG TWO X-RAY	On R042° SVL VOR, turn RIGHT to intercept R309° BRP VOR to D70.1 BRP DME, turn LEFT to intercept BRG138° W NDB to IAF VETEP, then according to approach chart	Cross TUVOG at 3050 or above, IAF VETEP at 900 or above	MAX IAS 407 km/h (220 kt) at IAF VETEP
SLV 7X Soloviivka SEVEN X-RAY	On track 024° from SLV VOR/DME, to D66.8 SLV DME, turn RIGHT to intercept BRG138° W NDB to IAF VETEP, then according to approach chart	Cross SLV VOR/DME at 2150 or above, IAF VETEP at 900 or above	MAX IAS 407 km/h (220 kt) at IAF VETEP

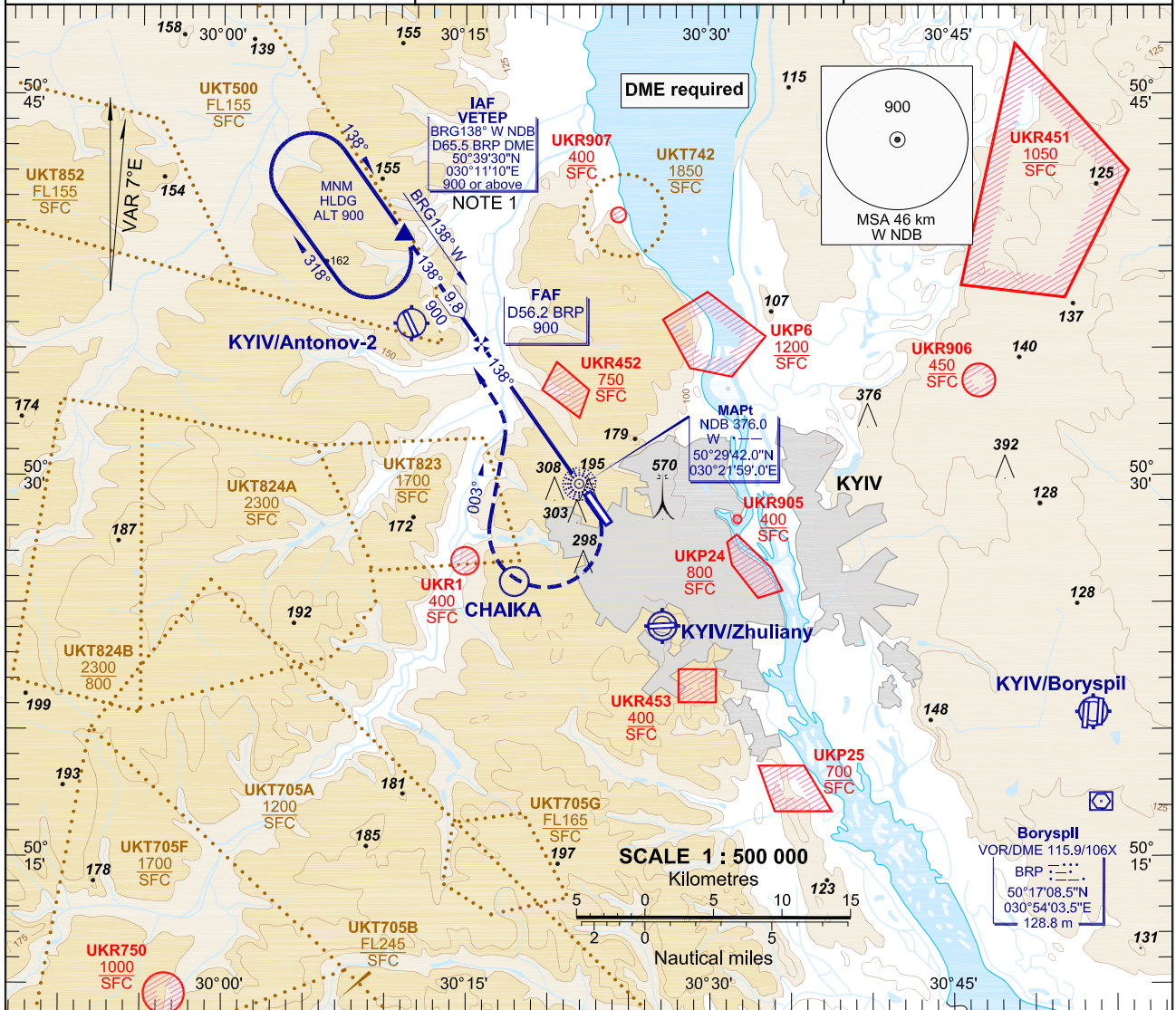
INSTRUMENT APPROACH CHART (IAC)-ICAO

AD ELEV 177 m

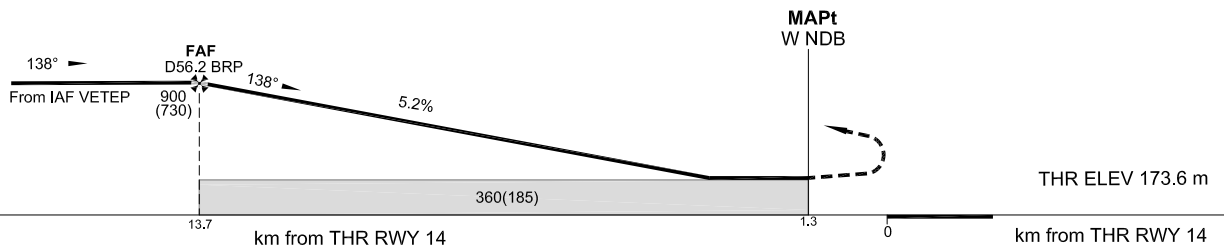
HEIGHTS RELATED TO THR RWY 14 - ELEV 173.6 m

KYIV/Antonov-1 NDB RWY 14

BEARINGS ARE MAGNETIC ELEV-ALT-HGT IN METRES	TRANSITION LEVEL: by ATC TRANSITION ALT: 3050	APP (BV1) 127.725 APP (BV5) 125.300 TWR 127.125
---	--	---



MISSED APPROACH:
At MAPt turn RIGHT on track 003°, turn LEFT to intercept BRG138° W NDB climbing 900(730) to IAF VETEP, then according to chart.



OCA/H	A	B	C	D	NOTE:					
Straight-in Approach	W NDB	360(185)	360(185)	360(185)	360(185)	1. Speed restriction: MAX IAS 407 km/h (220 kt) at IAF VETEP. 2. Timing not authorized for defining the MAPt.				
Circling		NOT AUTHORIZED								
GROUND SPEED	km/h	150	180	210	240	270	300	330	360	
FAF - MAPt 12400 m	min:s	4:58	4:08	3:33	3:06	2:45	2:29	2:15	2:04	
RATE OF DESCENT	m/s	2.2	2.6	3.0	3.5	3.9	4.3	4.8	5.2	

CHANGE: Lateral limits UKT705A, UKT705B, UKT705F: rename CHAIKA.